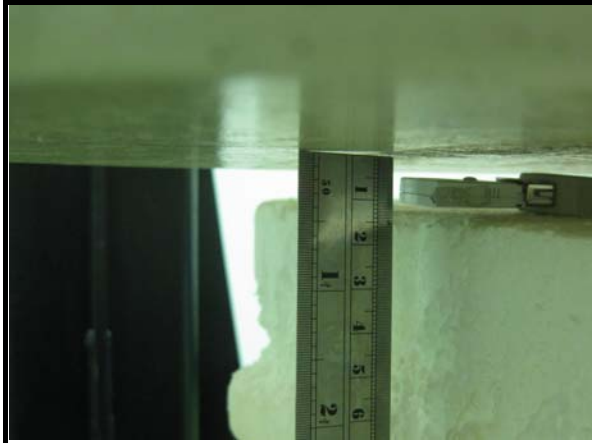


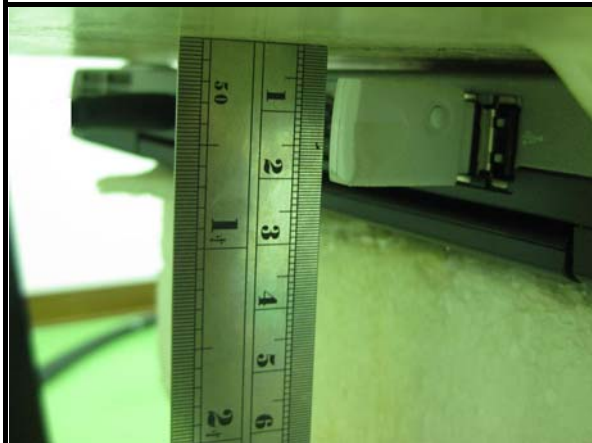
**PHOTOGRAPHS OF THE TEST CONFIGURATION**  
**(SAR Test Set Up Photos)**



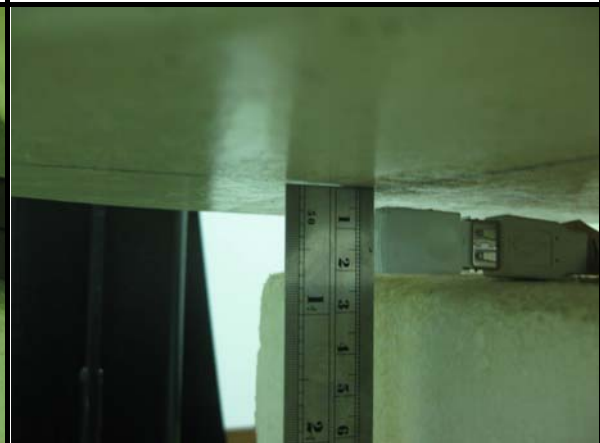
**Horizontal-Up**



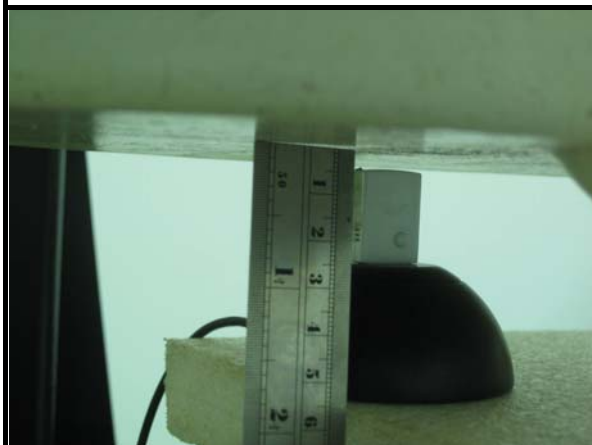
**Horizontal-Down**



**Vertical-Front**



**Vertical-Back**



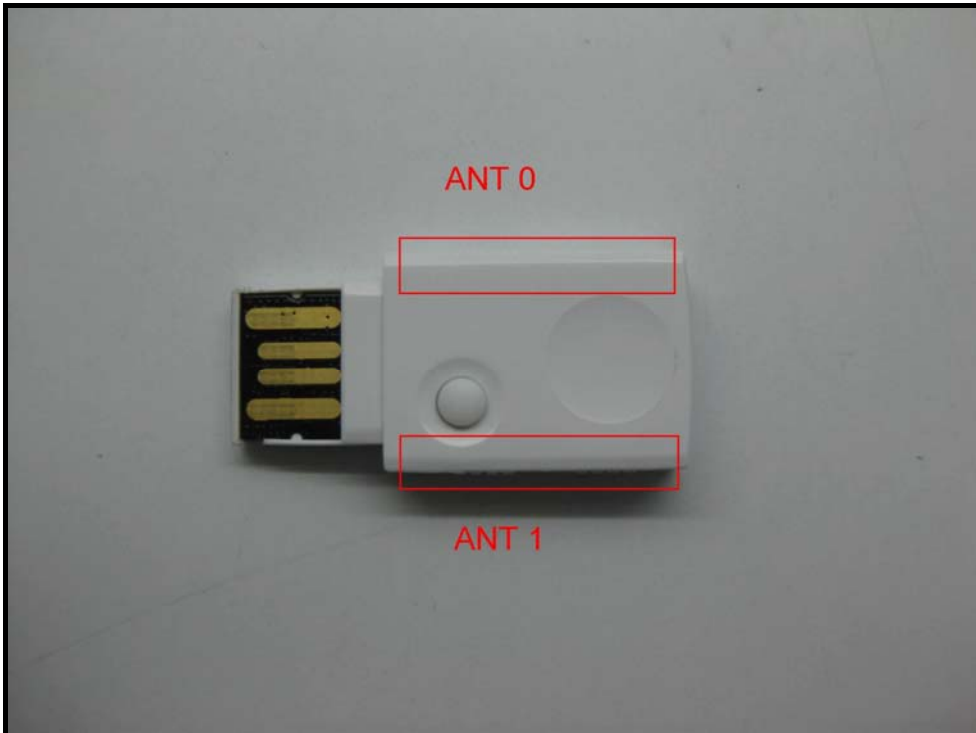
**TIP**



**Test Setup Photo**

**NOTE:** The EUT face to the phantom with 5mm-separation distance.

**DESCRIPTION OF ANTENNA LOCATION:**



**DESCRIPTION OF EUT CASE DISTANCE:**

