

WU5207

802.11n/b/g compliant 2.4GHz WiFi System USB Dongle

APO Generic

User Guide

Federal Communication Commission

Interference Statement

This device complies with Part 15 of the FCC Rules. Operation is subject to the following two conditions: (1) this device may not cause harmful interference, and (2) this device must accept any interference received, including interference that may cause undesired operation.

NOTE: This equipment has been tested and found to comply with the limits for a Class B digital device, pursuant to Part 15 of the FCC Rules. These limits are designed to provide reasonable protection against harmful interference in a residential installation. This equipment generates uses and can radiate radio frequency energy and, if not installed and used in accordance with the instructions, may cause harmful interference to radio communications.

However, there is no guarantee that interference will not occur in a particular installation. If this equipment does cause harmful interference to radio or television reception, which can be determined by turning the equipment off and on, the user is encouraged to try to correct the interference by one or more of the following measures:

- Reorient or relocate the receiving antenna.
- Increase the separation between the equipment and receiver.
- Connect the equipment into an outlet on a circuit different from that to which the receiver is needed.
- Consult the dealer or an experienced radio/TV technician for help.



WU5207 B-Label



Trade Name: AboCom

Table of Contents

Chapter 1: Introduction	5
Package Contents	5
How it works	5
System requirements	5
Appearance	5
WU5207 Image	5
Start using	6
Chapter 2: Utility control	7
Utility Form	8
Simple control	9
Update FW	9
Network Setting	10
IP Setting	11
Wireless Setting	11
WiFi Status	12
Refresh Button	12
Save button	12
Close Button	12

Chapter 1: Introduction

Package Contents

The following items should be included:

- 1pcs WU5207
- 1pcs User manual

If any of the above items are damaged or missing, please contact your dealer immediately.

Notice: Abocom has the right to exchange the design of package and include items without inform the users.

System requirements

OS: Windows XP SP2 with administrator privilege. Windows Vista, Windows 7.

CPU: Intel Pentium M 1.7Ghz (2005) is workable at 5 frames per second.

For 15 frames per second, a dual-core CPU (2006) is recommended.

Graphic card: A stand-alone graphic card is recommended, but not required.

A good graphic card could double frame rate for a slow CPU.

➤ Important Notice:

For better transmitting quality, we strongly recommend to put the wireless receiver horizontally in open space, do not put them into cabinet or cupboard that will reduce the wireless transmitting signal.

Appearance

[WU5207]



Item	Part	Description
1	LED	Blue LED, indicate the activity signal.
2	USB slot	Connector to your NB and PC , support USB2.0 , downward fit USB 1.0

Start Using

1. Confirm your **NB / PC** already power on and work normally.
2. **Plug in** the WU5207 to your NB. (don't plug-in before Windows start)



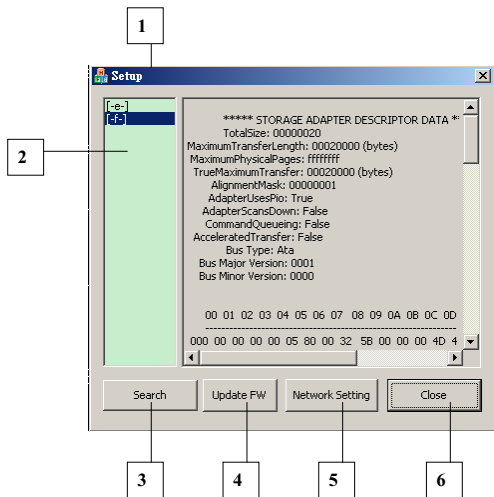
Please pay patient to await the NB desktop screen to reveal on the projector or LCD TV which user decided.

Chapter 2: Utility Control



- When user plug-in the WU5207 to NB or PC, and collocate with WU5207_tool_lite.exe
It will show the Utility.

Utility form:

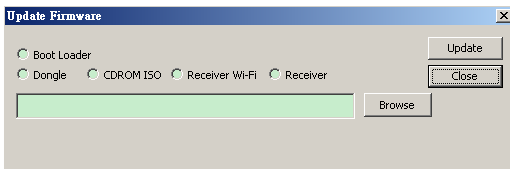


Item	Part	Description
1	Control Window	Main Control Window
2	Virtual CD-ROM Device	Show the Virtual CD-ROM location
3	Search	Search AP in environment
4	Update FW	Update WU5207 and VB202 FW
5	Network setting	User's desktop screen resolution
6	Close	Close the main Window.

Simple control

Update FW:

To choice what the FW need be update, and use the “Browse” button to find the correct file path.



Item	Part	Description
1	Boot Loader	Update the boot loader of WU5207
2	Dongle	Update the Kernel of WU5207
3	CDROM ISO	Update the ISO of WU5207
4	Receiver Wi-Fi	Update the Wi-Fi module FW of the collocate Receiver
5	Receiver	Update the Main board FW of the collocate Receiver

Network setting:

User could manual the Wireless setting; include the security, searching function in this page.

The screenshot shows a 'Network Setting' window with three main sections: IP Setting, Wireless Setting, and WiFi Status.

IP Setting:

- Radio buttons: STATIC, DHCP, Auto IP
- IP Address: 192 . 168 . 168 . 220
- Netmask: 255 . 255 . 255 . 0
- Gateway: 192 . 168 . 168 . 254
- MAC Address: 00:12:0E:9A:EB:25
- Master DNS: 0 . 0 . 0 . 0
- Slave DNS: 0 . 0 . 0 . 0
- Current IP: 0 . 0 . 0 . 0
- AutoIP Probe Count: 2
- AutoIP Announce Count: 2
- AutoIP Packet Interval: 200

Wireless Setting:

- Network Type: Infrastructure, AdHoc
- Authentication: OPEN, SHARED, WPAPSK, WPA2PSK
- Encryption: NONE, WEP, TKIP, AES
- SSID: VB20x-849
- Channel: 6, Country Region: 1: CH1~13
- WEP Key 1, 2, 3, 4: (empty)
- WPAPSK: (empty)

WiFi Status:

Channel: 0, SSID: , RSSI: 0, SNR: 0

Tx OK: 0, Tx Err: 0, One Collision: 0, TxRate: 1000000

Rx OK: 4948, Rx Err: 0, More Collisions: 0

Ch...	SSID	BSSID	Encr...	Auth...	RSSI	Mode	Ne
3	ZyXEL_Gigatest...	00:0c:43:30:52...	NONE	OPEN	-82	11b/g/n	
7	dd-wrt	00:12:0e:b1:d2...	NONE	OPEN	-76	11b/g/n	
6	Dick	00:50:18:45:dd...	WEP	OPEN	-62	11b/g	

Buttons: Refresh, Save, Close

IP setting:

- Mode: WU5207 provide three modes for user choice. STATIC / DHCP / Auto IP.
- IP address: User could manual key-in the IP address.
- Net mask: User could manual key-in the Net mask address.
- Gateway: User could manual key-in the Gateway address.
- MAC address: It is factory default value. Un-changeable.
- Master DNS: User could manual key-in the Master DNS address.
- Slave DNS: User could manual key-in the Slave DNS address.
- Current IP: It is factory default value. Un-changeable.
- Auto IP Probe Count: User could manual key-in the value for Auto IP mode.
- Auto IP Announce Count: User could manual key-in the value for Auto IP mode.
- Auto IP Packet Interval: User could manual key-in the value for Auto IP mode.

Wireless setting:

- Network Type: WU5207 provide two modes for user choice.
Infrastructure / AdHoc.
- Authentication: WU5207 provide four modes for user choice.
OPEN / Shared / WPAPSK / WPA2PSK.
- Encryption: WU5207 provide four modes for user choice.
NONE / WEP / TKIP / AES.
- SSID: This will base on the AP which WU5207 searching and login.
- Channel: This will base on the AP wireless channel which WU5207 searching and login.
- Country Region: This is factory default. Un-changeable.
- WEP Key 1~4: User could manual key-in the password under WEP security mode.
- WPAPSK: User could manual key-in the password under WPAPSK security mode.

WiFi Status:

This block will reveal the current WiFi status of WU5207 (Unchangeable).

The reveal items include:

- WiFi Channel
- SSID
- RSSI value
- SNR Value
- TX OK packet quantity.
- TX Error packet quantity.
- RX OK packet quantity.
- RX Error packet quantity.
- One Collision value.
- More Collisions value.
- TX Rate value

Refresh Button:

User could use this button to side-survey the wireless AP around the range of WU5207 availability searching performance.

Save Button:

User could save the option setting value by this button.

Close Button:

Close the option window.

