

Photo 1: Internal photo of EUT

Replaceable antenna
Connector Type: Reverse SMA

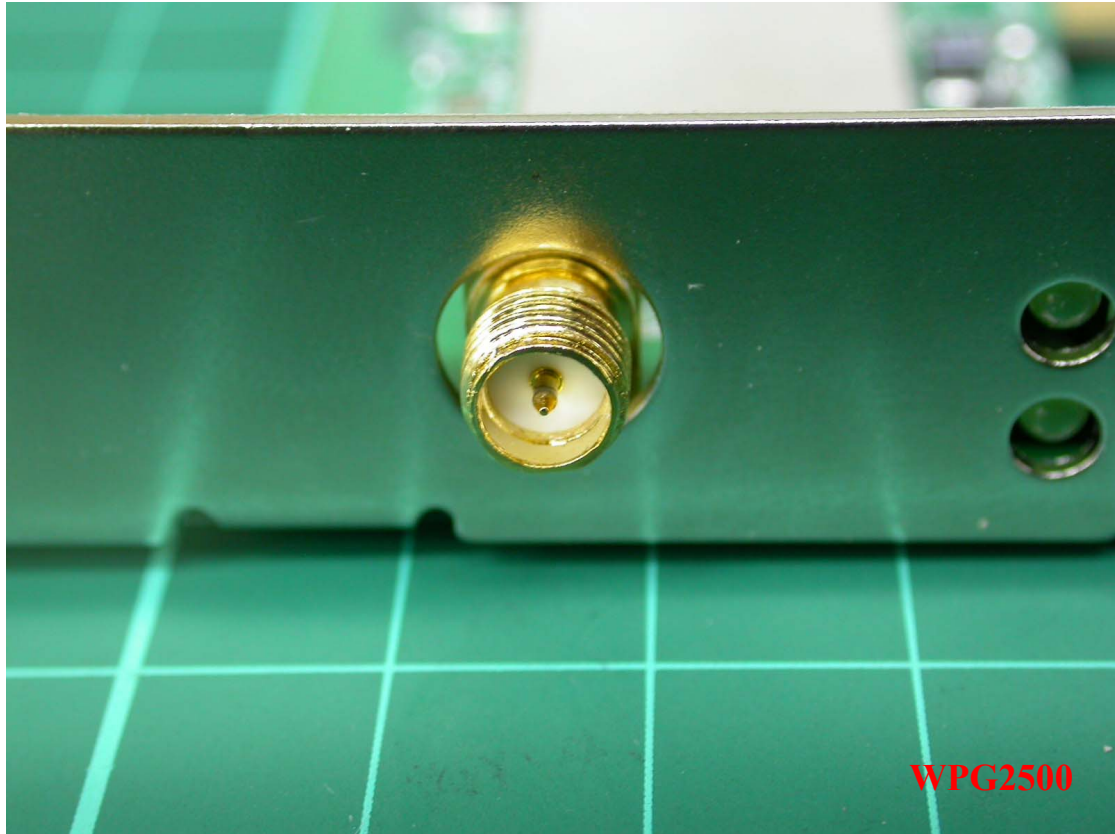


Photo 2: Internal photo of EUT

Replaceable antenna
Connector Type: Reverse SMA

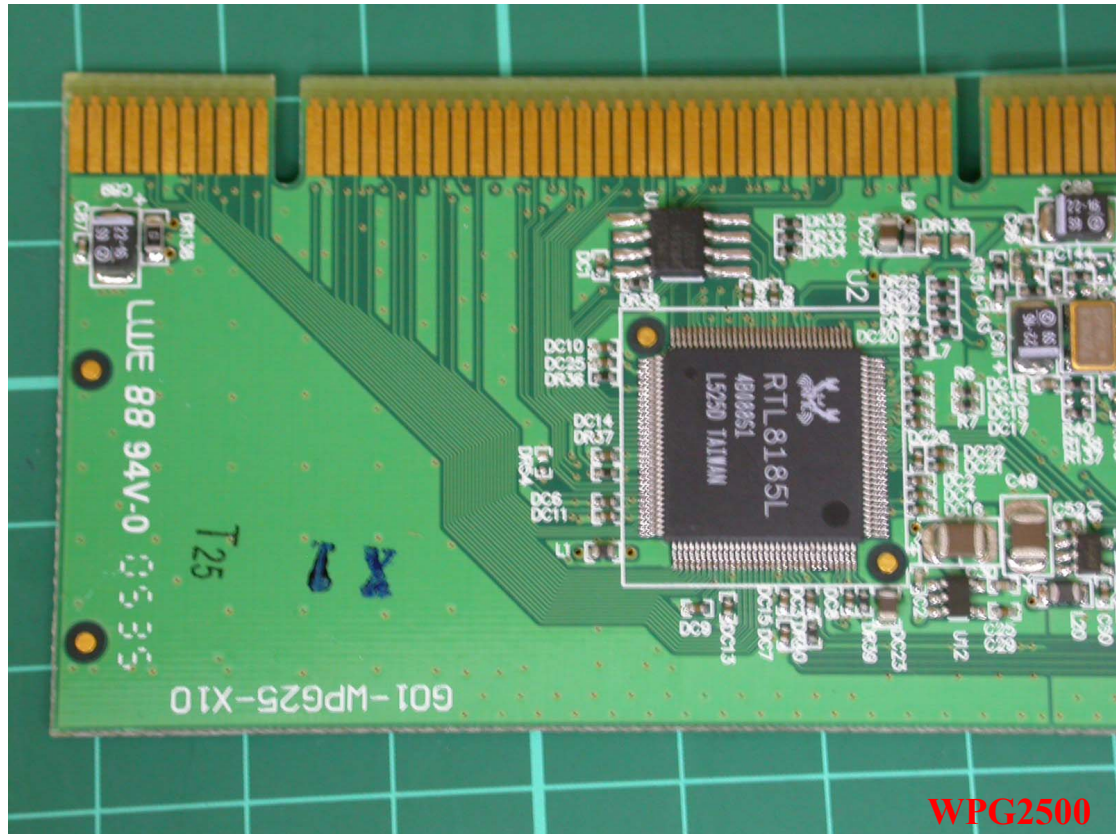


Photo 3: Internal photo of EUT

Replaceable antenna
Connector Type: Reverse SMA

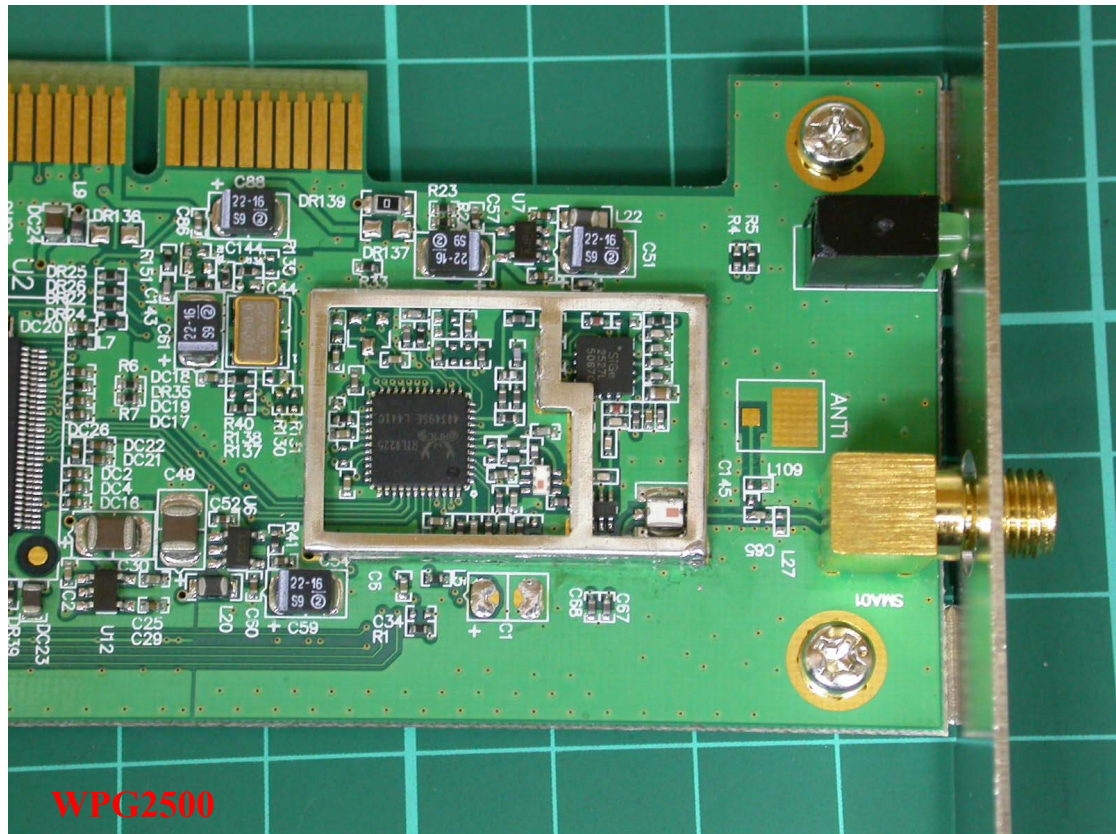


Photo 4: Internal photo of EUT

Replaceable antenna
Connector Type: Reverse SMA



Photo 5: Internal photo of EUT

Permanently connected antenna

Connector Type: N/A (Antenna with coaxial cable is soldered in the PCB Antenna)

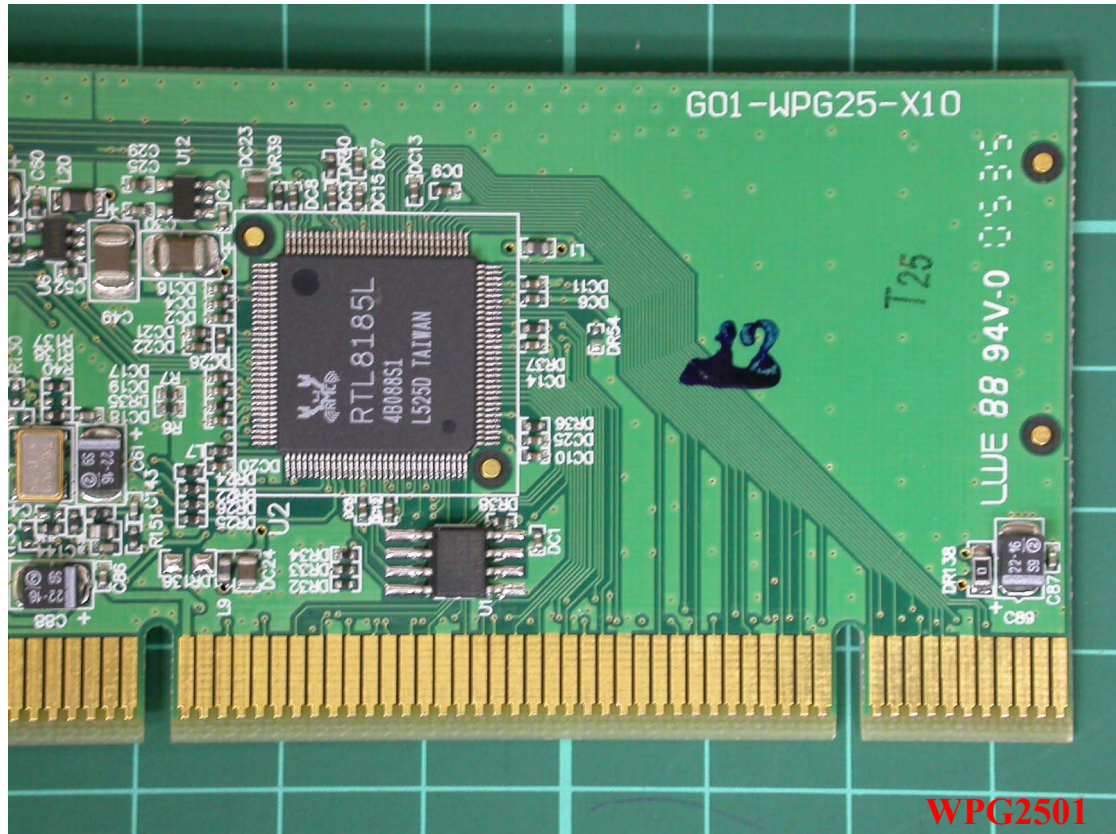


Photo 6: Internal photo of EUT

Permanently connected antenna

Connector Type: N/A (Antenna with coaxial cable is soldered in the PCB Antenna)

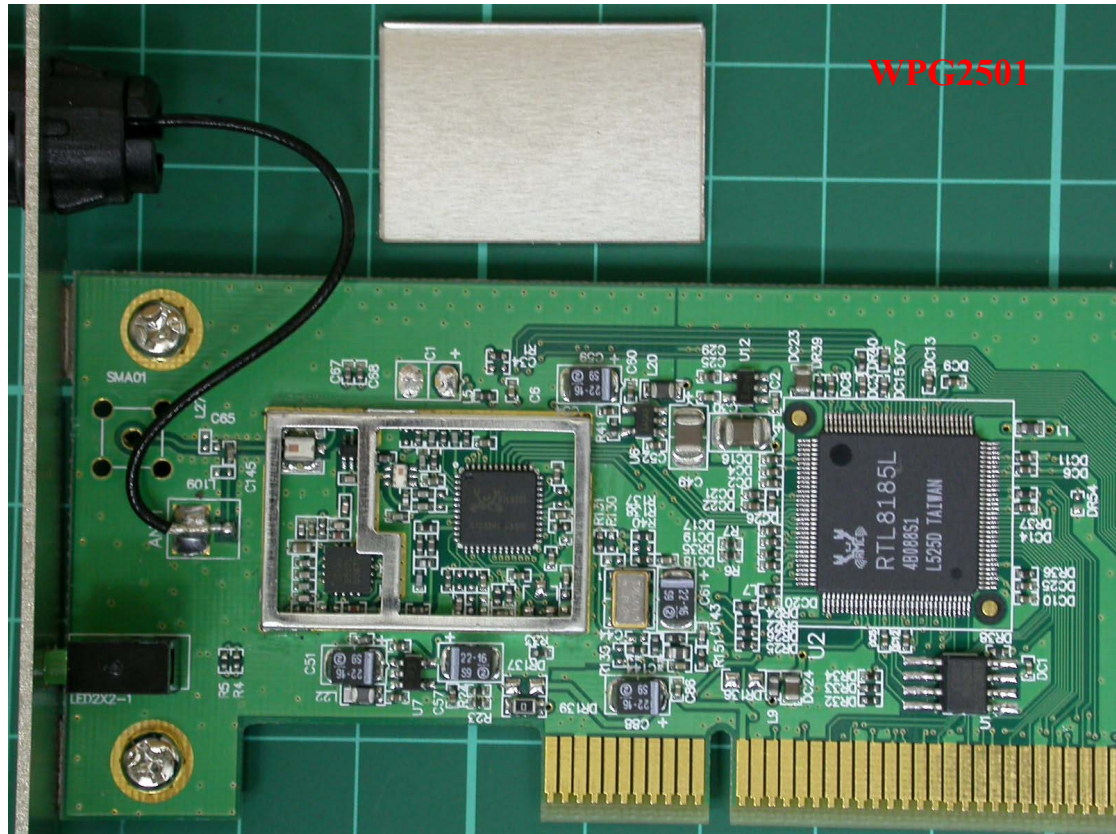


Photo 7: Internal photo of EUT

Permanently connected antenna

Connector Type: N/A (Antenna with coaxial cable is soldered in the PCB Antenna)

