

TEST REPORT

Equipment Under Test : 802.11b CardBus Wireless LAN Card
Model No. : WB2200
FCC ID : MQ4WB2K2
Applicant : Abocom Systems, Inc.
Address of Applicant : No.77, Yu Yin Rd, Chu-Nan Chen, Miao-Lih Hsian,
350, Taiwan, R.O.C.
Date of Receipt : 2003.12.04
Date of Test(s) : 2003.12.05
Date of Issue : 2003.12.08

Standards:

**FCC OET Bulletin 65 supplement C,
ANSI/IEEE C95.1 , C95.3**

In the configuration tested, the EUT complied with the standards specified above.

Remarks:

This report details the results of the testing carried out on one sample, the results contained in this test report do not relate to other samples of the same product. The manufacturer should ensure that all products in series production are in conformity with the product sample detailed in this report.

This report may only be reproduced and distributed in full. If the product in this report is used in any configuration other than that detailed in the report, the manufacturer must ensure the new system complies with all relevant standards. Any mention of SGS Taiwan E&E Services or testing done by SGS Taiwan E&E Services in connection with distribution or use of the product described in this report must be approved by SGS Taiwan E&E Services in writing.

Tested by : Dikin Yang **Date** : 2003.12.08
Approved by : Robert Chang **Date** : 2003.12.08

Contents

1. General Information

| | |
|--|----|
| 1.1 Testing Laboratory | 3 |
| 1.2 Details of Applicant | 3 |
| 1.3 Description of EUT(s) | 3 |
| 1.4 Test Environment | 4 |
| 1.5 Operation description | 4 |
| 1.6 Evaluation procedures | 4 |
| 1.7 The SAR Measurement System | 5 |
| 1.8 System Components | 7 |
| 1.9 SAR System Verification | 8 |
| 1.10 Tissue Simulant Fluid for the Frequency Band 2.4 to 2.5 GHz | 9 |
| 1.11 Test Standards and Limits | 10 |
| 1.12 References | 12 |

2. Instruments List

3. Summary of Results

4. Measurements

| | |
|---|----|
| 4.1 End-on position, lowest channel | 15 |
| 4.2 End-on position, middle channel | 16 |
| 4.3 End-on position, highest channel | 17 |
| 4.4 Edge-on position, lowest channel | 18 |
| 4.5 Edge-on position, middle channel | 19 |
| 4.6 Edge-on position, highest channel | 20 |
| 4.7 System Performance Validation | 21 |

APPENDIX

| | |
|---|----|
| 1. Photographs of Test Setup | 22 |
| 2. Photographs of EUT | 26 |
| 3. Probe Calibration certificate | 28 |
| 4. Uncertainty Analysis | 32 |
| 5. Phantom description | 33 |
| 6. System Validation from Original equipment supplier | 34 |



FCC ID: MQ4WB2K2

1. General Information

1.1 Testing Laboratory

SGS Taiwan Ltd. (FCC Registration number: 573967)
1F, No. 134, Wukung Road, Wuku industrial zone
Taipei county , Taiwan , R.O.C.
Telephone : +886-2-2299-3279
Fax : +886-2-2298-2698
Internet : <http://www.sgs.com.tw>

1.2 Details of Applicant

Applicant : Abocom Systems, Inc.
Address : No.77, Yu Yin Rd, Chu-Nan Chen, Miao-Lih
Hsian, 350, Taiwan, R.O.C.
Product Name : 802.11b CardBus Wireless LAN Card
Model Name : WB2200

1.3 Description of EUT(s)

| | |
|---------------------------|---|
| Equipment Type | 802.11b CardBus Wireless LAN Card |
| Test Procedure | FCC OET Bulletin 65, Supplement C |
| TX Frequency range | 2412-2462 MHz |
| FCC ID | MQ4WB2K2 |
| Model(s) | WB2200 |
| Serial No. | Pre-Production |
| Modulation | Direct Sequence Spread Spectrum (DSSS) |
| RF Conducted Output Power | 802.11b Mode |
| | 18.05 dBm (2412MHz) |
| | 19.85 dBm (2437MHz) |
| | 19.29 dBm (2462MHz) |

| | |
|--------------------------|------------------------------------|
| Max. SAR Measured | 0.0248 W/kg |
| Antenna Type | Printed |
| Battery Type(s) | From PCMCIA slot 3.3V/5V |
| Host Laptop PC(s) Tested | IBM ThinkPad T30 (S/N: 99AMZM5) |

1.4 Test Environment

Ambient temperature : 22.2° C

Tissue Simulating Liquid : 21.5° C

Relative Humidity : 52 %

1.5 Operation Configuration

The EUT is PCMCIA Card, which is installed inside a Notebook. Since the Notebook is placed on the top of the leg, when it operates, it is to be defined as a portable device. SAR measurement is mandatory. In order to measure SAR value, we used continuous transmission mode. The test set up mode was prepared by manufacturer. Value of Crest Factor = 1 was used for SAR testing according to the nature of the EUT. The test configuration tested at the low, middle and high frequency channels (2412MHz, 2437MHz and 2462MHz). By using the program subordinated in the computer, and change into the written channel, and then set in highest power. Finally, we will test it by dividing into 2 ways.

Configuration 1: "End-on" placement; Bottom of the Pc is paralleled and at a distance of 0.0 cm from the base of the phantom, but 1.3 cm Spacing between EUT & Planar Phantom. (Fig.3 & Fig.4 & Fig.5)

Configuration 2: "Edge-on" placement; edge of the PC at 90° and at a distance of 1.5 cm from the base of the phantom. (Fig.6 & Fig.7 & Fig.8)

1.6 EVALUATION PROCEDURES

The evaluation was performed with the following procedure:

- (1). Measurement of the SAR value at a fixed location above the ear point or central position of flat phantom was used as a reference value for assessing the power drop.

- (2). The SAR distribution at the exposed side of head or body position was measured at a distance of each device from the inner surface of the shell. The area covered the entire dimension of the head or EUT and the horizontal grid spacing was 15 mm x 15 mm. Based on these data, the area of the maximum absorption was determined by splint interpolation.
- (3). Around this point, a volume of 30 mm x 30 mm x 30 mm was assessed by measuring 7 x 7 x 7 points. On the basis of this data set, the spatial peak SAR value was evaluated under the following procedure:
 1. The data at the surface were extrapolated, since the center of the dipoles is 2.7 mm away from the tip of the probe and the distance between the surface and the lowest measuring point is 1.2 mm. The extrapolation was based on a least square algorithm [1]. A polynomial of the fourth order was calculated through the points in z-axes. This polynomial was then used to evaluate the points between the surface and the probe tip.
 2. The maximum interpolated value was searched with a straightforward algorithm. Around this maximum the SAR values averaged over the spatial volumes (1 g or 10 g) were computed by the 3D-Spline interpolation algorithm. The 3D-Spline is composed of three one-dimensional splints with the "Not a knot"-condition (in x, y and z-directions) [1], [2]. The volume was integrated with the trapezoidal-algorithm. One thousand points (10 x 10 x 10) were interpolated to calculate the average.
 3. All neighboring volumes were evaluated until no neighboring volume with a higher average value was found.
 4. Re-measurement of the SAR value at the same location as in Step 1. If the value changed by more than 5%, the evaluation was repeated.

1.7 The SAR Measurement System

A photograph of the SAR measurement System is given in Fig. a. This SAR Measurement System uses a Computer-controlled 3-D stepper motor system (Speag Dasy 4 professional system). A Model ET3DV6 1759 E-field probe is used to determine the internal electric fields. The SAR can be obtained from the equation $SAR = \sigma (|E_i|^2) / \rho$ where σ and ρ are the conductivity and mass density of the tissue-simulant.

The DASY4 system for performing compliance tests consists of the following items:

- A standard high precision 6-axis robot (Staubli RX family) with controller, teach pendant and software. An arm extension for accommodating the data acquisition electronics (DAE).

- A dosimeter probe, i.e., an isotropic E-field probe optimized and calibrated for usage in tissue simulating liquid. The probe is equipped with an optical surface detector system.
- A data acquisition electronics (DAE) which performs the signal amplification, signal multiplexing, AD-conversion, offset measurements, mechanical surface detection, collision detection, etc. The unit is battery powered with standard or rechargeable batteries. The signal is optically transmitted to the EOC.

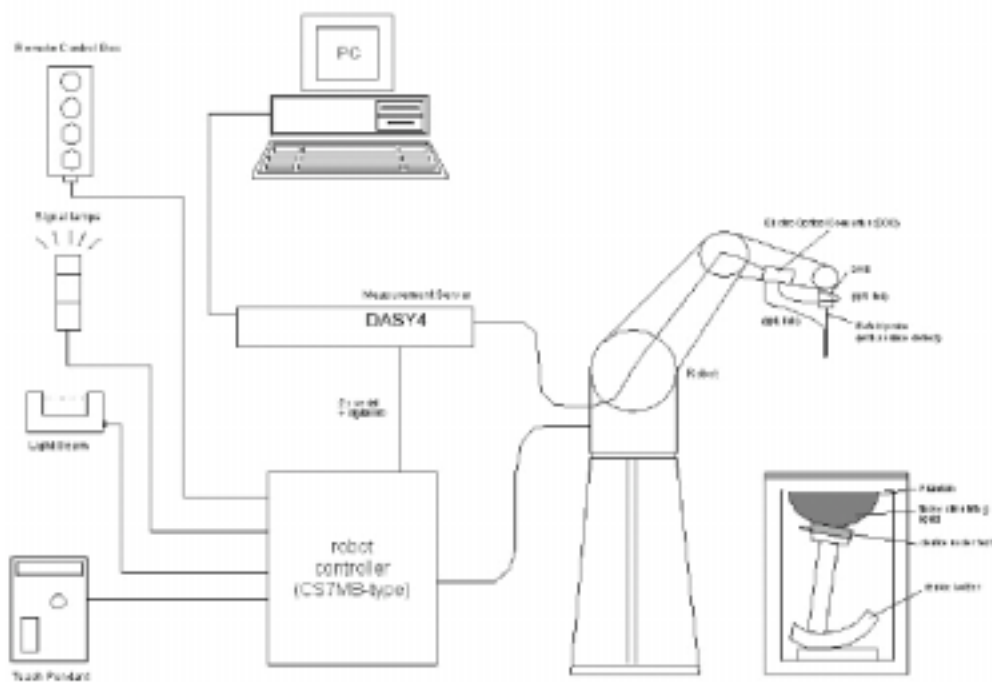


Fig. a The microwave circuit arrangement used for SAR system verification

- The Electro-optical converter (EOC) performs the conversion between optical and electrical of the signals for the digital communication to the DAE and for the analog signal from the optical surface detection. The EOC is connected to the measurement server.
- The function of the measurement server is to perform the time critical tasks such as signal filtering, control of the robot operation and fast movement interrupts.
- A probe alignment unit which improves the (absolute) accuracy of the probe positioning.
- A computer operating Windows 2000 or Windows XP.
- DASY4 software.
- Remote control with teach pendant and additional circuitry for robot safety such as

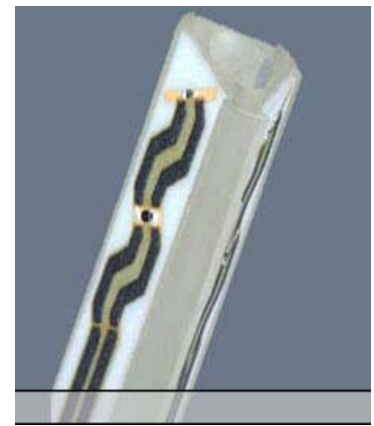
warning lamps, etc.

- The SAM twin phantom enabling testing left-hand and right-hand usage.
- The device holder for handheld mobile phones.
- Tissue simulating liquid mixed according to the given recipes.
- Validation dipole kits allowing to validate the proper functioning of the system.

1.8 System Components

ET3DV6 E-Field Probe

| | |
|----------------|---|
| Construction: | Symmetrical design with triangular core Built-in shielding against static charges PEEK enclosure material (resistant to organic solvents, e.g. glycol) |
| Calibration: | In air from 10 MHz to 2.5 GHz In brain simulating tissue at frequencies of 900 MHz and 1.8 GHz (accuracy $\pm 8\%$) |
| Frequency: | 10 MHz to >6 GHz; Linearity: ± 0.2 dB (30 MHz to 3 GHz) |
| Directivity: | ± 0.2 dB in brain tissue (rotation around probe axis) ± 0.4 dB in brain tissue (rotation normal to probe axis) |
| Dynamic Rnge: | 5 μ W/g to >100 mW/g; Linearity: ± 0.2 dB |
| Srfce. Detect: | ± 0.2 mm repeatability in air and clear liquids over diffuse reflecting surfaces |
| Dimensions: | Overall length: 330 mm Tip length: 16 mm Body diameter: 12 mm Tip diameter: 6.8 mm Distance from probe tip to dipole centers: 2.7 mm |
| Application: | General dosimetry up to 3 GHz Compliance tests of mobile phone |



ET3DV6 E-Field Probe

SAM PHANTOM V4.0C

| | |
|---------------|--|
| Construction: | The shell corresponds to the specifications of the Specific Anthropomorphic Mannequin (SAM) phantom defined in IEEE 1528-200X, CENELEC 50361 and IEC 62209. It enables the |
|---------------|--|

dosimetric evaluation of left and right hand phone usage as well as body mounted usage at the flat phantom region. A cover prevents evaporation of the liquid. Reference markings on the phantom allow the complete setup of all predefined phantom positions and measurement grids by manually teaching three points with the robot.

Shell Thickness: 2 ± 0.2 mm
Filling Volume: Approx. 25 liters
Dimensions: Height: 810 mm;
Length: 1000 mm;
Width: 500 mm



PHANTOM v4.0C

DEVICE HOLDER

Construction

In combination with the Twin SAM Phantom V4.0/V4.0C or Twin SAM, the Mounting Device (made from POM) enables the rotation of the mounted transmitter in spherical coordinates, whereby the rotation point is the ear opening. The devices can be easily and accurately positioned according to IEC, IEEE, CENELEC, FCC or other specifications. The device holder can be locked at different phantom locations (left head, right head, flat phantom).



Device Holder

1.9 SAR System Verification

The microwave circuit arrangement for system verification is sketched in Fig. b. The daily system accuracy verification occurs within the flat section of the SAM phantom. A SAR measurement was performed to see if the measured SAR was within $\pm 10\%$ from the target SAR values. These tests were done at 2450MHz. The tests were conducted on the

same days as the measurement of the DUT. The obtained results from the system accuracy verification are displayed in the table 1 (SAR values are normalized to 1W forward power delivered to the dipole). During the tests, the ambient temperature of the laboratory was in the range 22.3 °C, the relative humidity was in the range 54% and the liquid depth above the ear reference points was above 15 cm in all the cases. It is seen that the system is operating within its specification, as the results are within acceptable tolerance of the reference values.

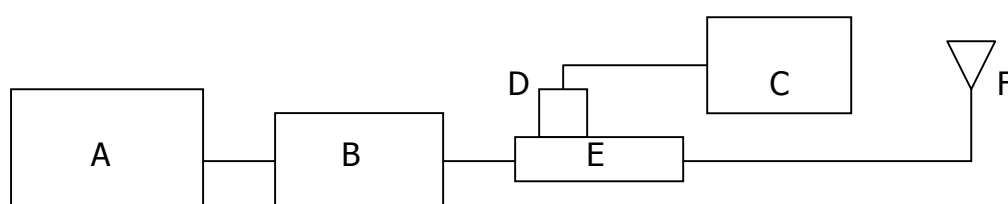


Fig. b The microwave circuit arrangement used for SAR system verification

- A. Agilent Model 8648D Signal Generator
- B. Mini circuits Model ZHL-42 Amplifier
- C. Agilent Model E4416A Power Meter
- D. Agilent Model 8482H Power Sensor
- E. Agilent Model 777D Dual directional coupling
- F. Reference dipole Antenna



Photograph of the 2450MHz System Check

| Validation Kit | Frequency | Target SAR 1g (250mW) | Target SAR 10g (250mW) | Measured SAR 1g | Measured SAR 10g | Measured date |
|---------------------|-----------|-----------------------|------------------------|-----------------|------------------|---------------|
| DT3DV6 S/N :1759 | 2450 MHz | 13.7 m W/g | 6.02 m W/g | 13.3 m W/g | 5.97 m W/g | 2003-12-05 |

Table 1. Results system validation

1.10 Tissue Simulant Fluid for the Frequency Band 2.4 to 2.5 GHz

The dielectric properties for this body-simulant fluid were measured by using the HP Model 85070D Dielectric Probe (rates frequency band 200 MHz to 20 GHz) in conjunction with HP 8714ET Network Analyzer(300 KHz-3000 MHz) by using a

procedure detailed in Section V.

| F (Mhz) | Tissue type | Limits/ Measured | Dielectric Parameters | | |
|---------|-------------|---------------------|-----------------------|--------------|----------------------------|
| | | | Permittivity | Conductivity | Simulated Tissue Temp(° C) |
| 2450 | Body | Measured, 03-Nov-03 | 51.3 | 2.007 | 21.4 |
| | | Measured, 03-Nov-03 | 51.23 | 2.0 | 21.5 |
| | | Recommended Limits | 50.1-55.3 | 1.85-2.05 | 20-24 |

The composition of the brain tissue simulating liquid for 2450 MHz is:

| Ingredient | 2450Mhz (Head) | 2450Mhz (Body) |
|--------------|----------------|----------------|
| DGMBE | 550.0 g | 301.7 ml |
| Water | 450.0 g | 698.3 ml |
| Total amount | 1 L (1.0kg) | 1 L (1.0kg) |

1.11 Test Standards and Limits

According to FCC 47CFR §2.1093(d) The limits to be used for evaluation are based generally on criteria published by the American National Standards Institute (ANSI) for localized specific absorption rate ("SAR") in Section 4.2 of "IEEE Standard for Safety Levels with Respect to Human Exposure to Radio Frequency Electromagnetic Fields, 3 kHz to 300 GHz," ANSI/IEEE C95.1-1992, Copyright 1992 by the Institute of Electrical and Electronics Engineers, Inc., New York, New York 10017. These criteria for SAR evaluation are similar to those recommended by the National Council on Radiation Protection and Measurements (NCRP) in "Biological Effects and Exposure Criteria for Radiofrequency Electromagnetic Fields," NCRP Report No. 86, Section 17.4.5. Copyright NCRP, 1986, Bethesda, Maryland 20814. SAR is a measure of the rate of energy absorption due to exposure to an RF transmitting source. SAR values have been related to threshold levels for potential biological hazards. The criteria to be used are specified in paragraphs (d)(1) and (d)(2) of this section and shall apply for portable devices transmitting in the frequency range from 100 kHz to 6 GHz. Portable devices that transmit at frequencies above 6 GHz are to be evaluated in terms of the MPE limits specified in § 1.1310 of this chapter. Measurements and calculations to demonstrate compliance with MPE field strength or power density limits for devices operating above 6

GHz should be made at a minimum distance of 5 cm from the radiating source.

(1) Limits for Occupational/Controlled exposure: 0.4 W/kg as averaged over the whole-body and spatial peak SAR not exceeding 8 W/kg as averaged over any 1 gram of tissue (defined as a tissue volume in the shape of a cube). Exceptions are the hands, wrists, feet and ankles where the spatial peak SAR shall not exceed 20 W/kg, as averaged over an 10 grams of tissue (defined as a tissue volume in the shape of a cube). Occupational/Controlled limits apply when persons are exposed as a consequence of their employment provided these persons are fully aware of and exercise control over their exposure. Awareness of exposure can be accomplished by use of warning labels or by specific training or education through appropriate means, such as an RF safety program in a work environment.

(2) Limits for General Population/Uncontrolled exposure: 0.08 W/kg as averaged over the whole-body and spatial peak SAR not exceeding 1.6 W/kg as averaged over any 1 gram of tissue (defined as a tissue volume in the shape of a cube). Exceptions are the hands, wrists, feet and ankles where the spatial peak SAR shall not exceed 4 W/kg, as averaged over any 10 grams of tissue (defined as a tissue volume in the shape of a cube). General Population/Uncontrolled limits apply when the general public may be exposed, or when persons that are exposed as a consequence of their employment may not be fully aware of the potential for exposure or do not exercise control over their exposure. Warning labels placed on consumer devices such as cellular telephones will not be sufficient reason to allow these devices to be evaluated subject to limits for occupational/controlled exposure in paragraph (d)(1) of this section.(Table .4)

| Human Exposure | Uncontrolled Environment General Population | Controlled Environment Occupational |
|---|--|--|
| Spatial Peak SAR (Brain) | 1.60 m W/g | 8.00 m W/g |
| Spatial Average SAR (Whole Body) | 0.08 m W/g | 0.40 m W/g |
| Spatial Peak SAR (Hands/Feet/Ankle/Wrist) | 4.00 m W/g | 20.00 m W/g |

Table .4 RF exposure limits

Notes:

1. Uncontrolled environments are defined as locations where there is potential exposure of individuals who have no knowledge or control of their potential exposure.
2. Controlled environments are defined as locations where there is potential exposure of individuals who have knowledge of their potential exposure and can exercise control over their exposure.

1.12 Test Standards and Limits

- [1] W. Gander, Computermathematik, Birkhaeuser, Basel, 1992.
- [2] W. H. Press, S. A. Teukolsky, W. T. Vetterling, and B. P. Flannery, Numerical Recipes in C, The Art of Scientific Computing, Second Edition, Cambridge University Press, 1992.

2. Instruments List

| Manufacturer | Device | Type | Serial number | Date of last calibration |
|---------------------------------|-----------------------------------|-----------------------|---------------|-----------------------------|
| Schmid & Partner Engineering AG | Dosimetric E-Field Probe | ET3DV6 | 1759 | Mar.07.2003 |
| Schmid & Partner Engineering AG | 2450 MHz System Validation Dipole | D2450V2 | 727 | Mar.05. 2003 |
| Schmid & Partner Engineering AG | Data acquisition Electronics | DAE3 | 547 | Jan.30.2003 |
| Schmid & Partner Engineering AG | Software | DASY 4 V4.1c Build 47 | --- | Calibration isn't necessary |
| Schmid & Partner Engineering AG | Phantom | SAM | --- | Calibration isn't necessary |
| Agilent | Network Analyser | 8714ET | US41442815 | Jan.16.2003 |
| Agilent | Dielectric Probe Kit | 85070D | US01440168 | Jan.20.2003 |

3.Summary of Results

The measurement results were obtained with the EUT tested in the conditions described in this report. Detailed measurement data and plots showing the maximum SAR location of the EUT are reported in 4.Measurements

| SAR MEASUREMENT | | | | | | | |
|---|---------|-----------|------|---------------------------|---------------------------|---------------|-----------------|
| Crest factor : 1 (Duty cycle: 100%) | | | | | | | |
| Laptop PC : IBM ThinkPad T30 , S/N: 99AMZM5 | | | | | Depth of Liquid : 15.0 cm | | |
| EUT Configuration 1 | | | | | | | |
| EUT Set-up conditions | | Frequency | | Conducted Power (Peak) | Liquid Temp[°C] | SAR (W/kg) | Limit (W/kg) |
| Sep. [cm] | Antenna | Channel | MHz | | | | |
| 0.0 | Printed | 1 | 2412 | 18.05 dBm | 21.5 | 0.0199 | 1.6 |
| | | 6 | 2437 | 19.85 dBm | 21.2 | 0.0248 | |
| | | 11 | 2462 | 19.29 dBm | 21.4 | 0.0233 | |
| EUT Configuration 2 | | | | | | | |
| EUT Set-up conditions | | Frequency | | Conducted Power (Peak) | Liquid Temp[°C] | SAR (W/kg) | Limit (W/kg) |
| Sep. [cm] | Antenna | Channel | MHz | | | | |
| 1.5 | Printed | 1 | 2412 | 18.05 dBm | 21.4 | 0.00221 | 1.6 |
| | | 6 | 2437 | 19.85 dBm | 21.5 | 0.00384 | |
| | | 11 | 2462 | 19.29 dBm | 21.2 | 0.00462 | |
| Measured Mixture Type | | Body | | Relative Humidity | | 52% | |
| Ambient Temperature | | 22.2°C | | Fluid Temperature | | 21.5°C | |

4. Measurements

Report No. : ER/2003/C0005

Page : 15 of 34

End-on position, lowest channel

Date/Time: 12/05/03 11:21:13

Configuration 1

DUT: 802.11b CardBus Wireless LAN Card ; Type: WB2200;

Program: 802.11b CardBus Wireless LAN Card

Communication System: Wireless LAN; Frequency: 2412 MHz; Duty Cycle: 1:1

Medium: M2450 ($\sigma = 2.01753$ mho/m, $\epsilon_r = 51.2622$, $\rho = 1000$ kg/m³)

Phantom section: Flat Section

DASY4 Configuration:

- Probe: ET3DV6 - SN1759; ConvF(4.5, 4.5, 4.5); Calibrated: 2003/3/7
- Sensor-Surface: 4mm (Mechanical And Optical Surface Detection)
- Electronics: DAE3 Sn547; Calibrated: 2003/1/30
- Phantom: SAM 12; Type: SAM 4.0; Serial: TP:1150
- Measurement SW: DASY4, V4.1 Build 47; Postprocessing SW: SEMCAD, V1.6 Build 115

Horizontal 0.0cm/Area Scan (61x71x1): Measurement grid: dx=15mm, dy=15mm

Reference Value = 1.62 V/m

Power Drift = -0.6 dB

Maximum value of SAR = 0.0219 mW/g

Horizontal 0.0cm/Zoom Scan (7x7x7)/Cube 0: Measurement grid: dx=5mm, dy=5mm, dz=5mm

Peak SAR (extrapolated) = 0.045 W/kg

SAR(1 g) = 0.0199 mW/g; SAR(10 g) = 0.0085 mW/g

Reference Value = 1.62 V/m

Power Drift = -0.6 dB

Maximum value of SAR = 0.0215 mW/g



0 dB = 0.0215mW/g

End-on position, middle channel**Configuration 1****DUT: 802.11b CardBus Wireless LAN Card ; Type: WB2200;****Program: 802.11b CardBus Wireless LAN Card**

Communication System: Wireless LAN; Frequency: 2437 MHz; Duty Cycle: 1:1

Medium: M2450 ($\rho = 1.99828 \text{ mho/m}$, $r = 51.4246$, $\rho = 1000 \text{ kg/m}^3$)

Phantom section: Flat Section

DASY4 Configuration:

- Probe: ET3DV6 - SN1759; ConvF(4.5, 4.5, 4.5); Calibrated: 2003/3/7
- Sensor-Surface: 4mm (Mechanical And Optical Surface Detection)
- Electronics: DAE3 Sn547; Calibrated: 2003/1/30
- Phantom: SAM 12; Type: SAM 4.0; Serial: TP:1150
- Measurement SW: DASY4, V4.1 Build 47; Postprocessing SW: SEMCAD, V1.6 Build 115

Horizontal 0.0cm/Area Scan (61x71x1): Measurement grid: dx=15mm, dy=15mm

Reference Value = 1.77 V/m

Power Drift = -0.2 dB

Maximum value of SAR = 0.0295 mW/g

Horizontal 0.0cm/Zoom Scan (7x7x7)/Cube 0: Measurement grid: dx=5mm, dy=5mm, dz=5mm

Peak SAR (extrapolated) = 0.0571 W/kg

SAR(1 g) = 0.0248 mW/g; SAR(10 g) = 0.0108 mW/g

Reference Value = 1.77 V/m

Power Drift = -0.2 dB

Maximum value of SAR = 0.027 mW/g



0 dB = 0.027mW/g

End-on position, highest channel**Configuration 1****DUT: 802.11b CardBus Wireless LAN Card ; Type: WB2200;****Program: 802.11b CardBus Wireless LAN Card**

Communication System: Wireless LAN; Frequency: 2462 MHz; Duty Cycle: 1:1

Medium: M2450 ($\rho = 2.01427 \text{ mho/m}$, $r = 51.2782$, $\rho = 1000 \text{ kg/m}^3$)

Phantom section: Flat Section

DASY4 Configuration:

- Probe: ET3DV6 - SN1759; ConvF(4.5, 4.5, 4.5); Calibrated: 2003/3/7
- Sensor-Surface: 4mm (Mechanical And Optical Surface Detection)
- Electronics: DAE3 Sn547; Calibrated: 2003/1/30
- Phantom: SAM 12; Type: SAM 4.0; Serial: TP:1150
- Measurement SW: DASY4, V4.1 Build 47; Postprocessing SW: SEMCAD, V1.6 Build 115

Horizontal 0.0cm/Area Scan (61x71x1): Measurement grid: dx=15mm, dy=15mm

Reference Value = 1.88 V/m

Power Drift = -0.008 dB

Maximum value of SAR = 0.0313 mW/g

Horizontal 0.0cm/Zoom Scan (7x7x7)/Cube 0: Measurement grid: dx=5mm, dy=5mm, dz=5mm

Peak SAR (extrapolated) = 0.0567 W/kg

SAR(1 g) = 0.0233 mW/g; SAR(10 g) = 0.0102 mW/g

Reference Value = 1.88 V/m

Power Drift = -0.008 dB

Maximum value of SAR = 0.0255 mW/g



0 dB = 0.0255mW/g

Edge-on position, lowest channel

Configuration 2

DUT: 802.11b CardBus Wireless LAN Card ; Type: WB2200;

Program: 802.11b CardBus Wireless LAN Card

Communication System: Wireless LAN; Frequency: 2412 MHz;Duty Cycle: 1:1

Medium: M2450 ($\epsilon = 2.01753$ mho/m, $\mu_r = 51.2622$, $\rho = 1000$ kg/m³)

Phantom section: Flat Section

DASY4 Configuration:

- Probe: ET3DV6 - SN1759; ConvF(4.5, 4.5, 4.5); Calibrated: 2003/3/7
- Sensor-Surface: 4mm (Mechanical And Optical Surface Detection)
- Electronics: DAE3 Sn547; Calibrated: 2003/1/30
- Phantom: SAM 12; Type: SAM 4.0; Serial: TP:1150
- Measurement SW: DASY4, V4.1 Build 47; Postprocessing SW: SEMCAD, V1.6 Build 115

Vertical 1.5cm/Area Scan (71x61x1): Measurement grid: dx=15mm, dy=15mm

Reference Value = 0.555 V/m

Power Drift = -0.9 dB

Maximum value of SAR = 0.00212 mW/g

Vertical 1.5cm/Zoom Scan (7x7x7)/Cube 0: Measurement grid: dx=5mm, dy=5mm, dz=5mm

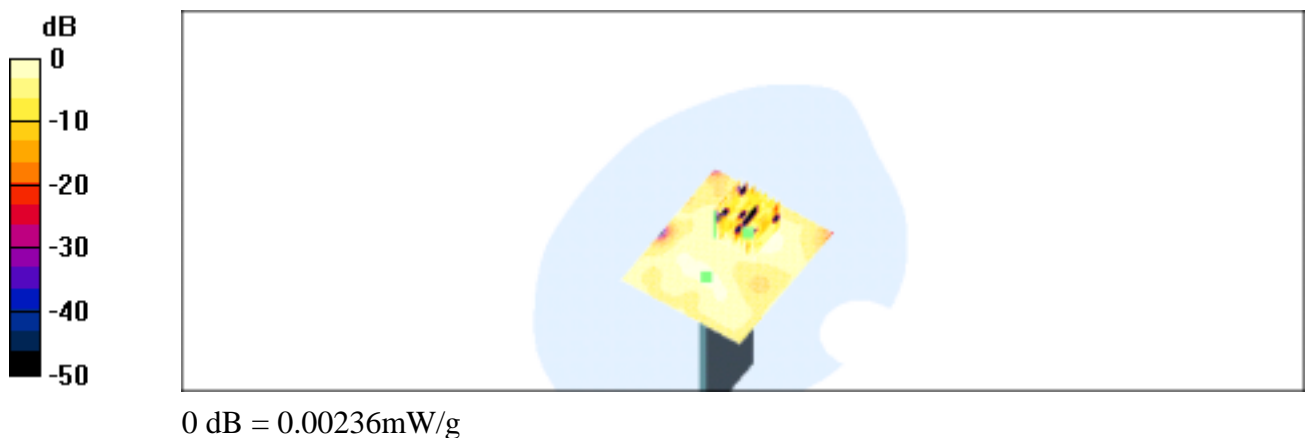
Peak SAR (extrapolated) = 0.0138 W/kg

SAR(1 g) = 0.00221 mW/g; SAR(10 g) = 0.00105 mW/g

Reference Value = 0.555 V/m

Power Drift = -0.9 dB

Maximum value of SAR = 0.00236 mW/g



Edge-on position, middle channel**Configuration 2****DUT: 802.11b CardBus Wireless LAN Card ; Type: WB2200;****Program: 802.11b CardBus Wireless LAN Card**

Communication System: Wireless LAN; Frequency: 2437 MHz; Duty Cycle: 1:1

Medium: M2450 ($\rho = 1.99828 \text{ mho/m}$, $r = 51.4246$, $\rho = 1000 \text{ kg/m}^3$)

Phantom section: Flat Section

DASY4 Configuration:

- Probe: ET3DV6 - SN1759; ConvF(4.5, 4.5, 4.5); Calibrated: 2003/3/7
- Sensor-Surface: 4mm (Mechanical And Optical Surface Detection)
- Electronics: DAE3 Sn547; Calibrated: 2003/1/30
- Phantom: SAM 12; Type: SAM 4.0; Serial: TP:1150
- Measurement SW: DASY4, V4.1 Build 47; Postprocessing SW: SEMCAD, V1.6 Build 115

Vertical 1.5cm/Area Scan (71x61x1): Measurement grid: dx=15mm, dy=15mm

Reference Value = 0.769 V/m

Power Drift = -3 dB

Maximum value of SAR = 0.00366 mW/g

Vertical 1.5cm/Zoom Scan (7x7x7)/Cube 0: Measurement grid: dx=5mm, dy=5mm, dz=5mm

Peak SAR (extrapolated) = 0.0157 W/kg

SAR(1 g) = 0.00384 mW/g; SAR(10 g) = 0.00183 mW/g

Reference Value = 0.769 V/m

Power Drift = -3 dB

Maximum value of SAR = 0.0039 mW/g



0 dB = 0.0039mW/g

Edge-on position, highest channel**Configuration 2****DUT: 802.11b CardBus Wireless LAN Card ; Type: WB2200;****Program: 802.11b CardBus Wireless LAN Card**

Communication System: Wireless LAN; Frequency: 2462 MHz; Duty Cycle: 1:1

Medium: M2450 ($\rho = 2.01427$ mho/m, $r = 51.2782$, $\rho = 1000$ kg/m³)

Phantom section: Flat Section

DASY4 Configuration:

- Probe: ET3DV6 - SN1759; ConvF(4.5, 4.5, 4.5); Calibrated: 2003/3/7
- Sensor-Surface: 4mm (Mechanical And Optical Surface Detection)
- Electronics: DAE3 Sn547; Calibrated: 2003/1/30
- Phantom: SAM 12; Type: SAM 4.0; Serial: TP:1150
- Measurement SW: DASY4, V4.1 Build 47; Postprocessing SW: SEMCAD, V1.6 Build 115

Vertical 1.5cm/Area Scan (71x61x1): Measurement grid: dx=15mm, dy=15mm

Reference Value = 0.982 V/m

Power Drift = -2 dB

Maximum value of SAR = 0.00549 mW/g

Vertical 1.5cm/Zoom Scan (7x7x7)/Cube 0: Measurement grid: dx=5mm, dy=5mm, dz=5mm

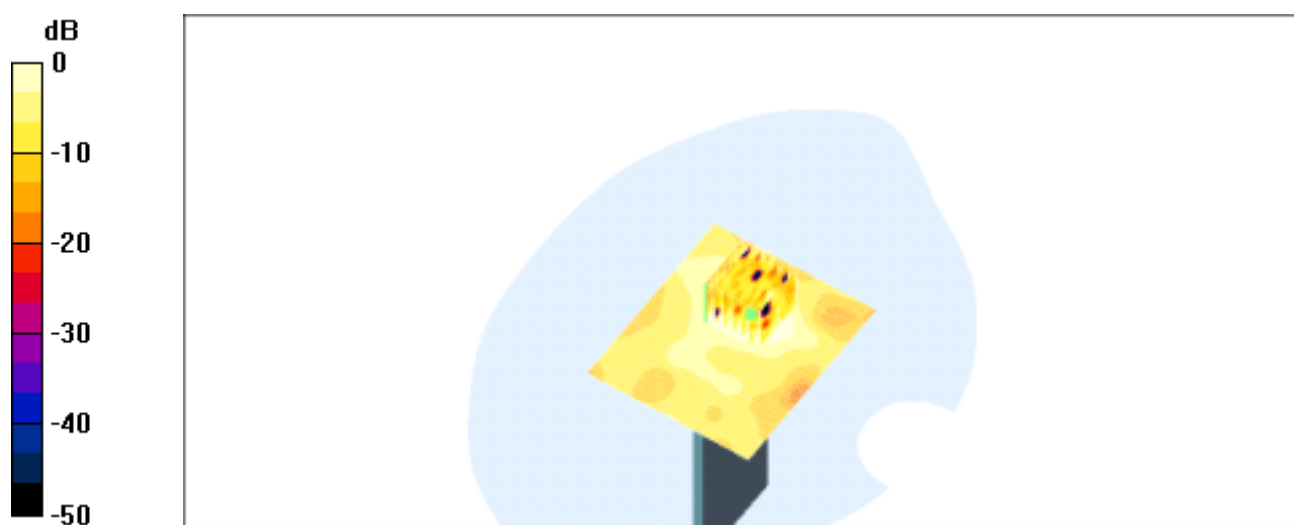
Peak SAR (extrapolated) = 0.0835 W/kg

SAR(1 g) = 0.00462 mW/g; SAR(10 g) = 0.00226 mW/g

Reference Value = 0.982 V/m

Power Drift = -2 dB

Maximum value of SAR = 0.00483 mW/g



0 dB = 0.00483mW/g

SAR System Performance Verification

DUT: Dipole 2450 MHz; Type: D2450V2; Serial: D2450V2 - SN:727

Program: 2003-12-05

Communication System: CW; Frequency: 2450 MHz; Duty Cycle: 1:1

Medium: M2450 ($\epsilon = 1.89046$ mho/m, $\mu_r = 51.515$, $\rho = 1000$ kg/m³)

Phantom section: Flat Section

DASY4 Configuration:

- Probe: ET3DV6 - SN1759; ConvF(4.5, 4.5, 4.5); Calibrated: 2003/3/7
- Sensor-Surface: 4mm (Mechanical And Optical Surface Detection)
- Electronics: DAE3 Sn547; Calibrated: 2003/1/30
- Phantom: SAM 12; Type: SAM 4.0; Serial: TP:1150
- Measurement SW: DASY4, V4.1 Build 47; Postprocessing SW: SEMCAD, V1.6 Build 115

System Test/Area Scan (101x101x1): Measurement grid: dx=10mm, dy=10mm

Reference Value = 93.6 V/m

Power Drift = -0.02 dB

Maximum value of SAR = 15.1 mW/g

System Test/Zoom Scan (7x7x7)/Cube 0: Measurement grid: dx=5mm, dy=5mm, dz=5mm

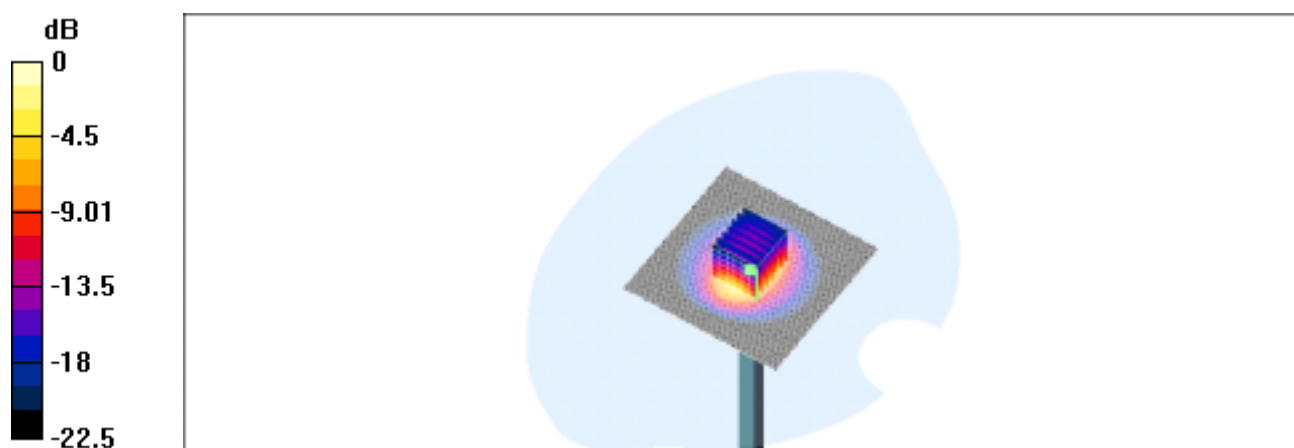
Peak SAR (extrapolated) = 30.3 W/kg

SAR(1 g) = 13.3 mW/g; SAR(10 g) = 5.97 mW/g

Reference Value = 93.6 V/m

Power Drift = -0.02 dB

Maximum value of SAR = 14.8 mW/g



0 dB = 14.8mW/g

Appendix

Photographs of Test Setup



Fig.1 Photograph of the SAR measurement System

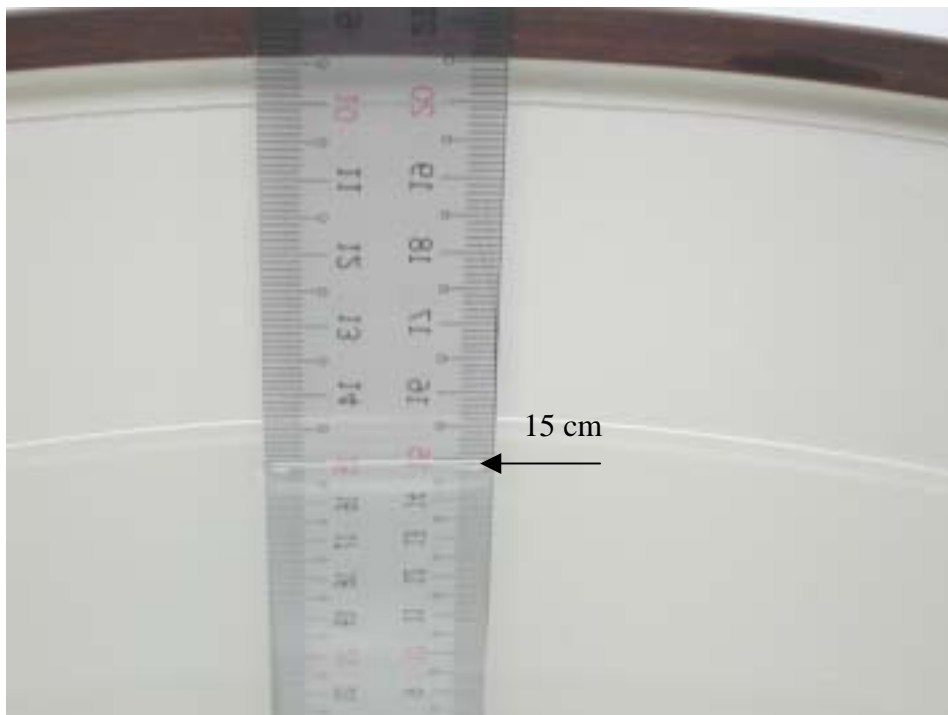


Fig.2 Photograph of the Tissue Simulant Fluid liquid depth 15cm

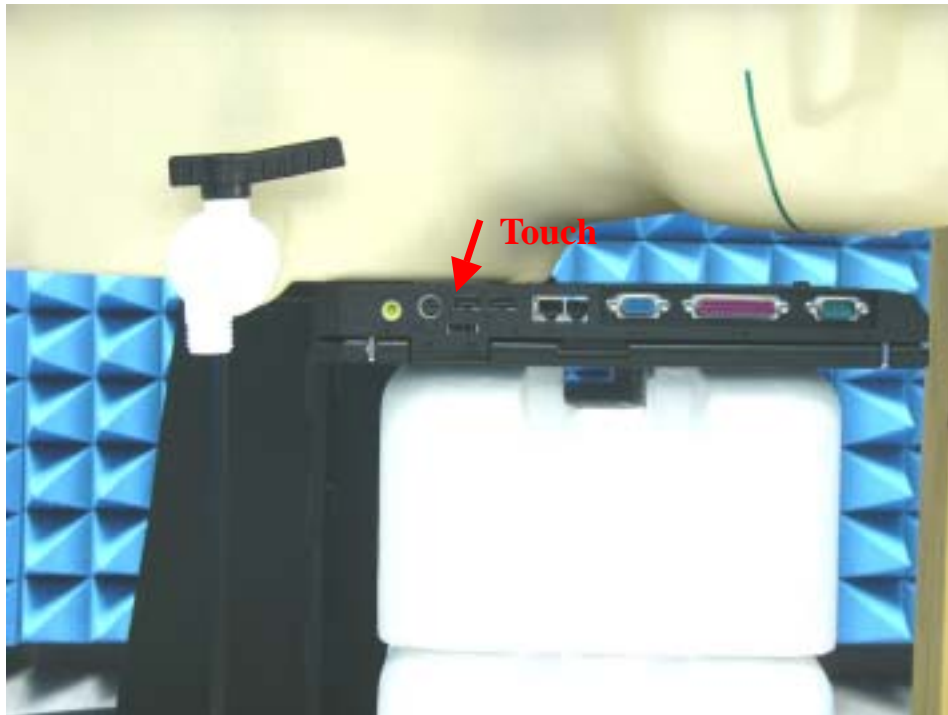


Fig.3 Photograph of the Bottom of the Pc is paralleled and at a distance of 0.0 cm from the base of the phantom.

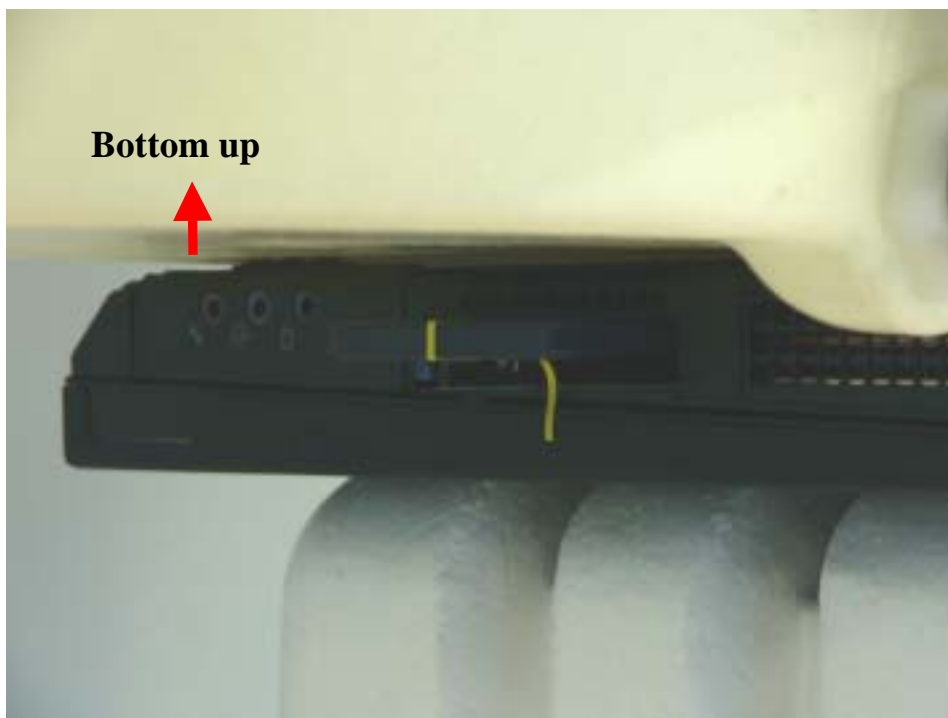


Fig.4 Photograph of the Bottom of the Pc is paralleled and at a distance of 0.0 cm from the base of the phantom.

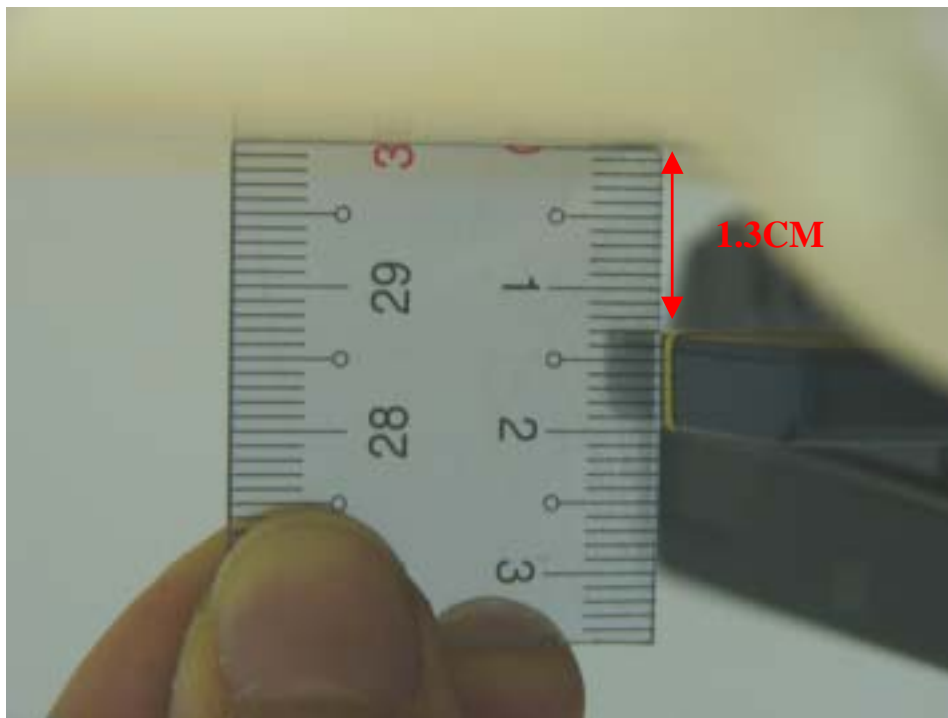


Fig.5 Photograph of the 1.3 cm Spacing between EUT & Planar Phantom and Antenna isn't extended.



Fig.6 Edge of the PC at 90° and at a distance of 1.5 cm from the base of the phantom.



Fig.7 Edge of the PC at 90° and at a distance of 1.5 cm from the base of the phantom.

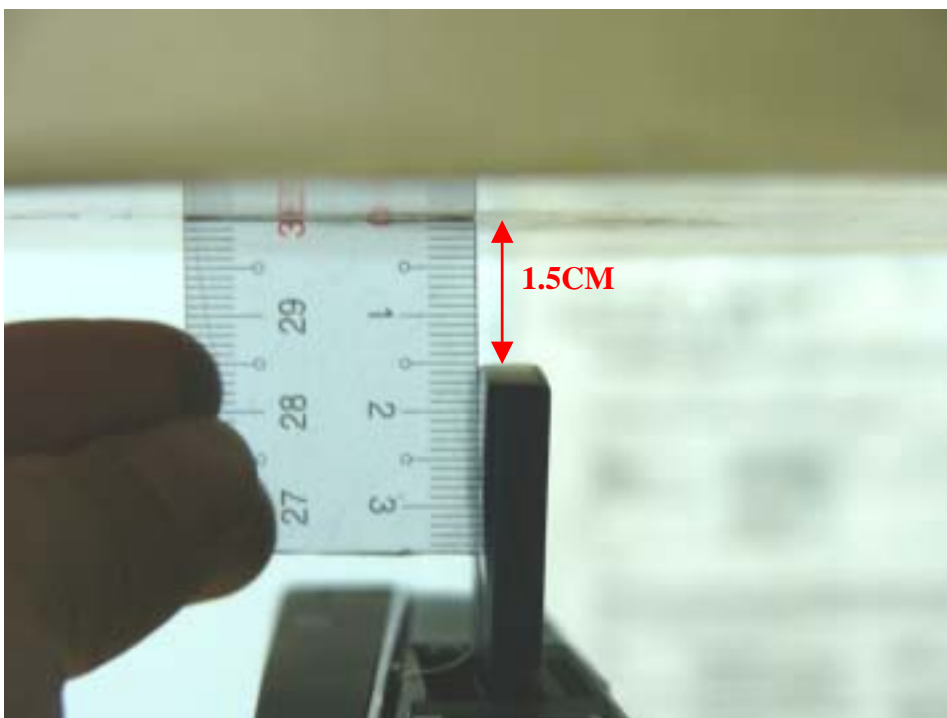


Fig.8 Photograph of the antenna tip is upward and at a distance of 1.5 cm from the base of the phantom.

Photographs of the EUT



Fig.9 Front view of device



Fig.10 Back view of device



Fig.11 With IBM ThinkPad T30 PC PCMCIA slot



Fig.12 With IBM ThinkPad T30 PC PCMCIA slot

Probe Calibration certificate

Calibration Laboratory of
Schmid & Partner
Engineering AG
Zeughausstrasse 43, 8004 Zurich, Switzerland

Client **SGS (Auden)**

CALIBRATION CERTIFICATE

Object(s) **ET3DV6 - SN:1759**

Calibration procedure(s) **QA CAL-01.v2
Calibration procedure for dosimetric E-field probes**

Calibration date: **March 7, 2003**

Condition of the calibrated item **In Tolerance (according to the specific calibration document)**

This calibration statement documents traceability of M&TE used in the calibration procedures and conformity of the procedures with the ISO/IEC 17025 international standard.

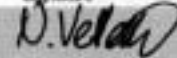
All calibrations have been conducted in the closed laboratory facility: environment temperature 22 +/- 2 degrees Celsius and humidity < 75%.

Calibration Equipment used (M&TE critical for calibration)

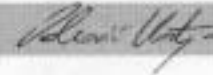
| Model Type | ID # | Cal Date | Scheduled Calibration |
|----------------------------------|--------------|----------------------------------|------------------------|
| RF generator HP 8684C | US3642U01700 | 4-Aug-99 (in house check Aug-02) | in house check: Aug-05 |
| Power sensor E4412A | MY41495277 | 8-Mar-02 | Mar-03 |
| Power sensor HP 8481A | MY41092160 | 18-Sep-02 | Sep-03 |
| Power meter EPM E4419B | GB41293874 | 13-Sep-02 | Sep-03 |
| Network Analyzer HP 8753E | US36432426 | 3-May-00 | in house check: May 03 |
| Fuke Process Calibrator Type 702 | SN: 6295803 | 3-Sep-01 | Sep-03 |

Calibrated by: **Nico Vertert** **Technician**

Signature



Approved by: **Katja Pokovic** **Laboratory Director**



Date issued: March 7, 2003

This calibration certificate is issued as an intermediate solution until the accreditation process (based on ISO/IEC 17025 International Standard) for Calibration Laboratory of Schmid & Partner Engineering AG is completed.

Schmid & Partner Engineering AG

s p e a g

Zeughausstrasse 43, 8004 Zurich, Switzerland
Phone +41 1 245 9700, Fax +41 1 245 9778
info@speag.com, <http://www.speag.com>

Probe ET3DV6

SN:1759

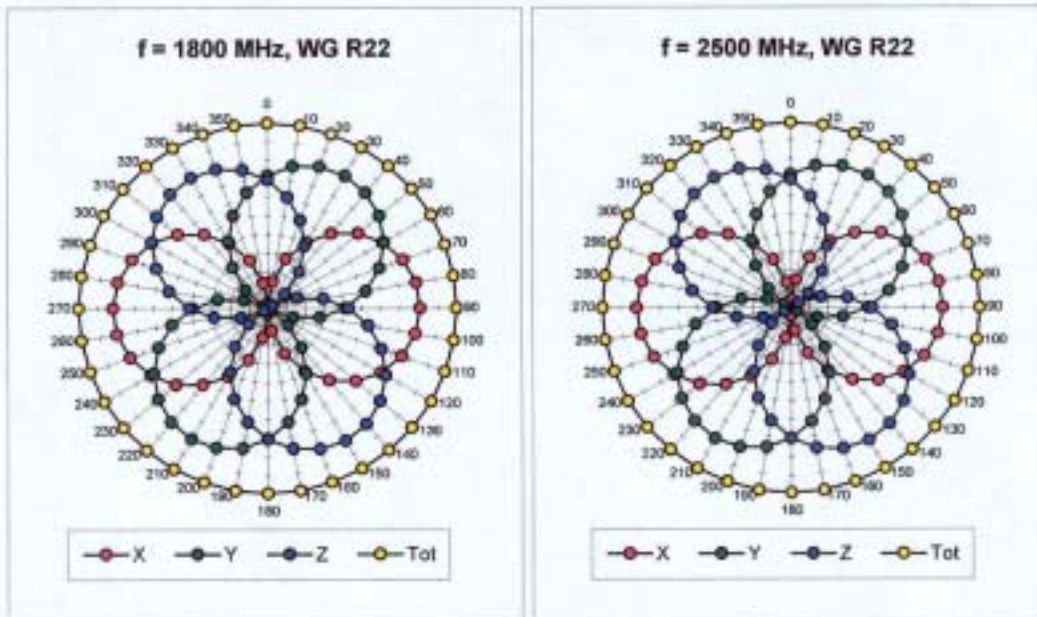
| | |
|-------------------|-------------------|
| Manufactured: | November 12, 2002 |
| Last calibration: | March 7, 2003 |

Calibrated for DASY Systems

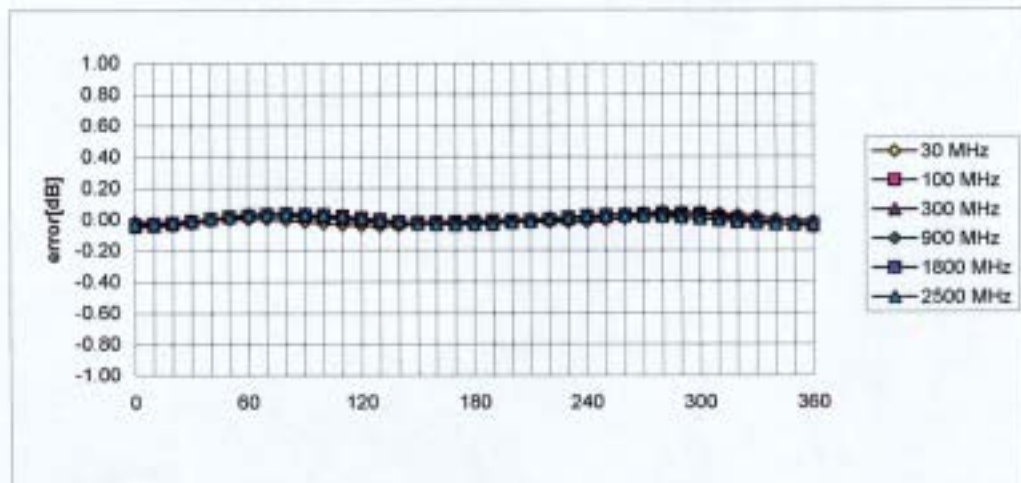
(Note: non-compatible with DASY2 system!)

ET3DV6 SN:1759

March 7, 2003



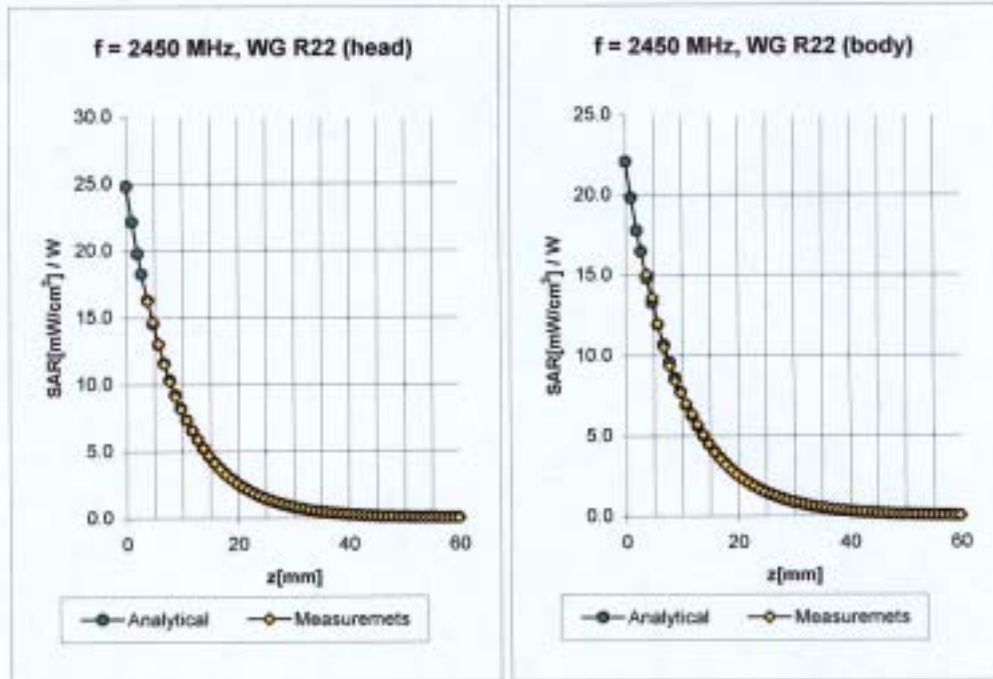
Isotropy Error (ϕ), $\theta = 0^\circ$



ET3DV6 SN:1759

March 7, 2003

Conversion Factor Assessment



| | | | | |
|------|---------|-----------------------|-----------------------------|---------------------------------------|
| 2450 | Head | MHz | $\epsilon_r = 39.2 \pm 5\%$ | $\sigma = 1.80 \pm 5\% \text{ mho/m}$ |
| | ConvF X | $5.0 \pm 8.9\% (k=2)$ | Boundary effect: | |
| | ConvF Y | $5.0 \pm 8.9\% (k=2)$ | Alpha | 0.98 |
| | ConvF Z | $5.0 \pm 8.9\% (k=2)$ | Depth | 1.95 |
| 2450 | Body | MHz | $\epsilon_r = 52.7 \pm 5\%$ | $\sigma = 1.95 \pm 5\% \text{ mho/m}$ |
| | ConvF X | $4.5 \pm 8.9\% (k=2)$ | Boundary effect: | |
| | ConvF Y | $4.5 \pm 8.9\% (k=2)$ | Alpha | 1.01 |
| | ConvF Z | $4.5 \pm 8.9\% (k=2)$ | Depth | 1.80 |

Uncertainty Analysis

| DASY4 Uncertainty Budget | | | | | | | | |
|---------------------------------|-------------------|-------------|------|---------|----------|---------------|-----------------|-----------|
| According to IEEE P1528 | | | | | | | | |
| Error Description | Uncertainty Value | Prob. Dist. | Div. | (Ci) 1g | (Ci) 10g | Std.Unc. (1g) | Std. Unc. (10g) | (Vi) Veff |
| Measurement System | | | | | | | | |
| Probe Calibration | ± 4.8% | N | 1 | 1 | 1 | ± 4.8% | ± 4.8% | |
| Axial Isotropy | ± 4.7% | R | 3 | 0.7 | 0.7 | ± 1.9% | ± 1.9% | |
| Hemispherical Isotropy | ± 9.6% | R | 3 | 0.7 | 0.7 | ± 3.9% | ± 3.9% | |
| Boundary Effects | ± 1.0% | R | 3 | 1 | 1 | ± 0.6% | ± 0.6% | |
| Linearity | ± 4.7% | R | 3 | 1 | 1 | ± 2.7% | ± 2.7% | |
| System Detection Limits | ± 1.0% | R | 3 | 1 | 1 | ± 0.6% | ± 0.6% | |
| Readout Electronics | ± 1.0% | N | 1 | 1 | 1 | ± 1.0% | ± 1.0% | |
| Response Time | ± 0.8% | R | 3 | 1 | 1 | ± 0.5% | ± 0.5% | |
| Integration Time | ± 2.6% | R | 3 | 1 | 1 | ± 1.5% | ± 1.5% | |
| RF Ambient Conditions | ± 3.0% | R | 3 | 1 | 1 | ± 1.7% | ± 1.7% | |
| Probe Positioner | ± 0.4% | R | 3 | 1 | 1 | ± 0.2% | ± 0.2% | |
| Probe Positioning | ± 2.9% | R | 3 | 1 | 1 | ± 1.7% | ± 1.7% | |
| Max. SAR Eval | ± 1.0% | R | 3 | 1 | 1 | ± 0.6% | ± 0.6% | |
| Test Sample Related | | | | | | | | |
| Device Positioning | ± 2.9% | N | 1 | 1 | 1 | ± 2.9% | ± 2.9% | 875 |
| Device Holder | ± 3.6% | N | 1 | 1 | 1 | ± 3.6% | ± 3.6% | 5 |
| Power Drift | ± 5.0% | R | 3 | 1 | 1 | ± 2.9% | ± 2.9% | |
| Phantom and Setup | | | | | | | | |
| Phantom Uncertainty | ± 4.0% | R | 3 | 1 | 1 | ± 2.3% | ± 2.3% | |
| Liquid Conductivity (target) | ± 5.0% | R | 3 | 0.64 | 0.43 | ± 1.8% | ± 1.2% | |
| Liquid Conductivity (meas.) | ± 2.5% | N | 1 | 0.64 | 0.43 | ± 1.6% | ± 1.1% | |
| Liquid Permittivity (target) | ± 5.0% | R | 3 | 0.6 | 0.49 | ± 1.7% | ± 1.4% | |
| Liquid Permittivity (meas) | ± 2.5% | N | 1 | 0.6 | 0.49 | ± 1.5% | ± 1.2% | |
| Combined Std. Uncertainty | | | | | | ± 10.3% | ± 10.0% | 331 |
| Expanded STD Uncertainty | | | | | | ± 20.6% | ± 20.1% | |

Phantom description

Schmid & Partner Engineering AG

Zeughausstrasse 43, 8004 Zurich, Switzerland, Phone +41 1 245 97 00, Fax +41 1 245 97 79

Certificate of conformity / First Article Inspection

| | |
|-----------------------|--|
| Item | SAM Twin Phantom V4.0 |
| Type No | QD 000 P40 CA |
| Series No | TP-1150 and higher |
| Manufacturer / Origin | Untersee Composites Hauptstr. 69 CH-8559 Fruthwilen Switzerland |

Tests

The series production process used allows the limitation to test of first articles. Complete tests were made on the pre-series Type No. QD 000 P40 AA, Serial No. TP-1001 and on the series first article Type No. QD 000 P40 BA, Serial No. TP-1006. Certain parameters have been retested using further series units (called samples).

| Test | Requirement | Details | Units tested |
|----------------------|---|--|---------------------------|
| Shape | Compliance with the geometry according to the CAD model. | IT1S CAD File (*) | First article, Samples |
| Material thickness | Compliant with the requirements according to the standards | 2mm +/- 0.2mm in specific areas | First article, Samples |
| Material parameters | Dielectric parameters for required frequencies | 200 MHz - 3 GHz Relative permittivity < 5 Loss tangent < 0.05. | Material sample TP 104-5 |
| Material resistivity | The material has been tested to be compatible with the liquids defined in the standards | Liquid type HSL 1800 and others according to the standard. | Pre-series, First article |

Standards

- [1] CENELEC EN 50361
- [2] IEEE P1528-200x draft 6.5
- [3] IEC PT 62209 draft 0.9
- (*) The IT1S CAD file is derived from [2] and is also within the tolerance requirements of the shapes of [1] and [3].

Conformity

Based on the sample tests above, we certify that this item is in compliance with the uncertainty requirements of SAR measurements specified in standard [1] and draft standards [2] and [3].

Date

28.02.2002

Signature / Stamp

F. Bernhult

**Schmid & Partner
Engineering AG**

Zeughausstrasse 43, CH-8004 Zurich
Tel. +41 1 245 97 00, Fax +41 1 245 97 79

Johannes Kappeler

System Validation from Original equipment supplier SPEAG Schmid & Partner

Date/Time: 03/05/03 16:17:40

Test Laboratory: SPEAG, Zurich, Switzerland
File Name: SN727_SN3013_M2450_050303.da4

DUT: Dipole 2450 MHz; Serial: D2450V2 - SN727
Program: Dipole Calibration

Communication System: CW-2450; Frequency: 2450 MHz; Duty Cycle: 1:1
Medium: Muscle 2450 MHz; ($\sigma = 2.05$ mho/m, $\epsilon_r = 51.05$, $\rho = 1000$ kg/m³)
Phantom section: Flat Section

DASY4 Configuration:

- Probe: ES3DV2 - SN3013; ConvF(4.2, 4.2, 4.2); Calibrated: 1/19/2003
- Sensor-Surface: 4mm (Mechanical Surface Detection)
- Electronics: DAE3 - SN411; Calibrated: 1/16/2003
- Phantom: SAM with CRP - TP1006; Type: SAM 4.0; Serial: TP:1006
- Measurement SW: DASY4, V4.1 Build 25; Postprocessing SW: SEMCAD, V1.6 Build 105

Pin = 250 mW; d = 10 mm/Area Scan (81x81x1): Measurement grid: dx=15mm, dy=15mm

Pin = 250 mW; d = 10 mm/Zoom Scan (7x7x7)/Cube 0: Measurement grid: dx=5mm, dy=5mm, dz=5mm

Reference Value = 89.7 V/m

Peak SAR = 27.6 W/kg

SAR(1 g) = 13.7 mW/g; SAR(10 g) = 6.16 mW/g

Power Drift = 0.007 dB

