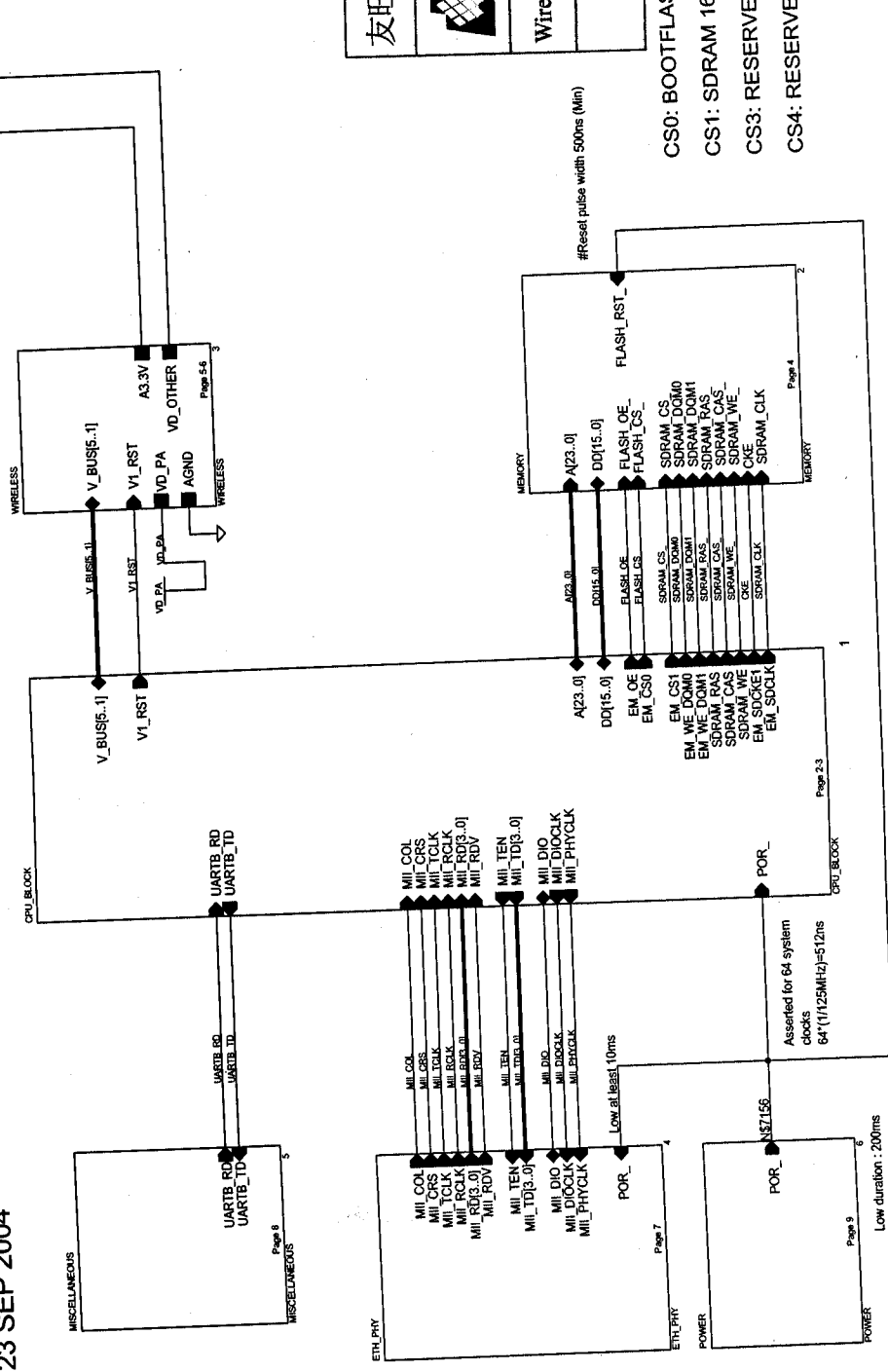


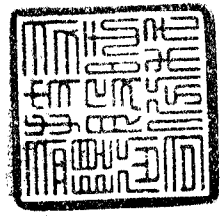
Product Name: WAP404
 Description: Wireless 802.11b/g Access Point
 Board Number: M01-WAP404+++++A1
 Board Revision: A1
 Date: 23 SEP 2004

External LED :
 POWER LED (pg.3)
 StatusErr (pg.3)
 Wireless LinkAct (pg.3)
 LAN Link (pg.4)



友旺科技股份有限公司
友旺科技
 Wireless 802.11b/g Access Point
 M/N : WAP404

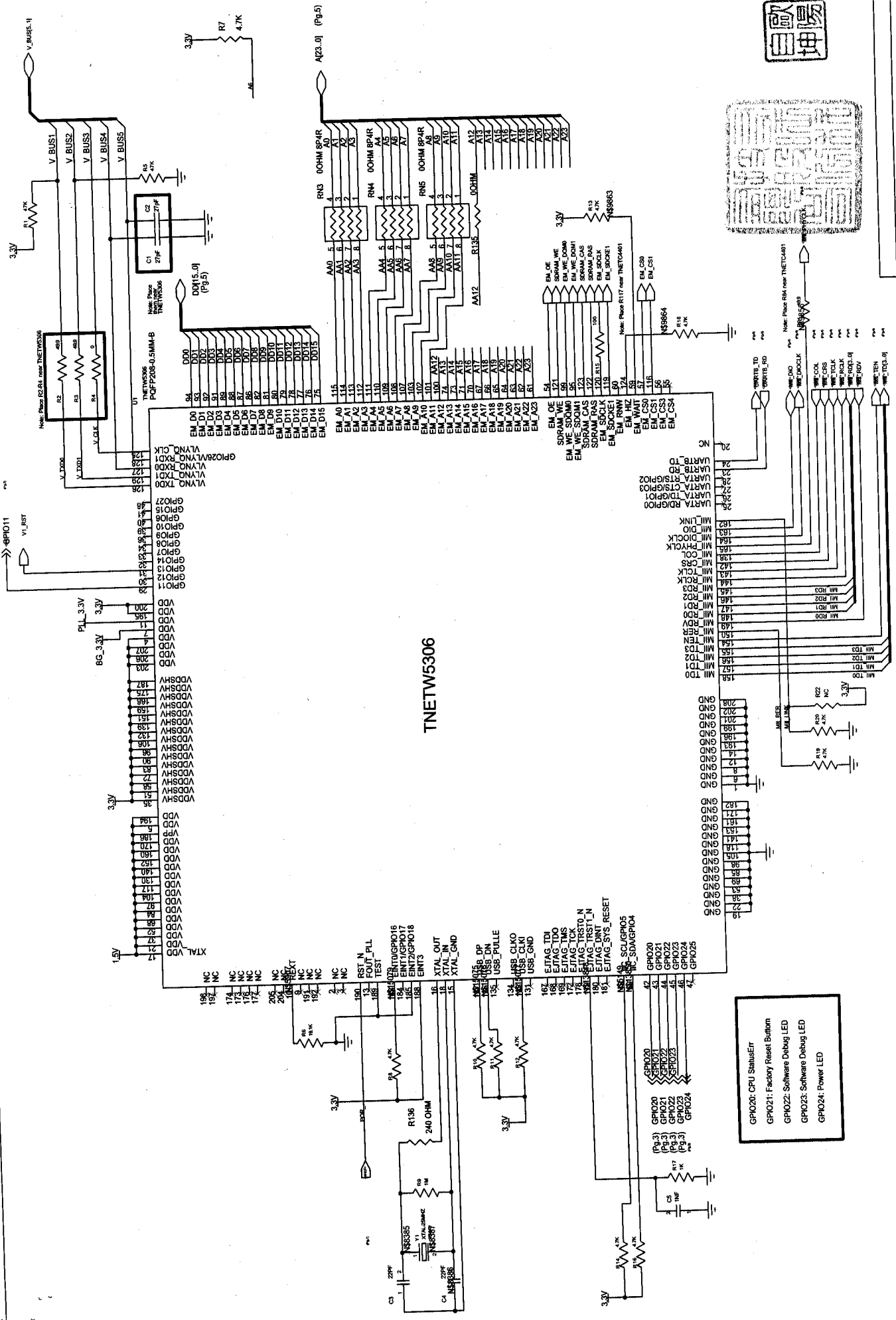
CS0: BOOTFLASH
 CS1: SDRAM 16Bit
 CS3: RESERVED
 CS4: RESERVED



Title	WAP404 Wireless 802.11g AP
Size	Document Number
CustNm	WAP404_DIAGRAM
Date:	日期: 九月 23, 2004
Sheet	1 of 9



Title	WAP404 Wireless 802.11g AP
Document Number	CPU TNETW5306-SHEET1
Size	A3
Date	2006.11.14
Sheet	2 of 9
Rev	X1

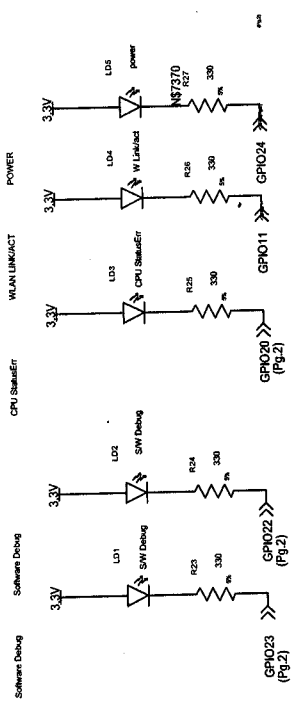


TNETW5306

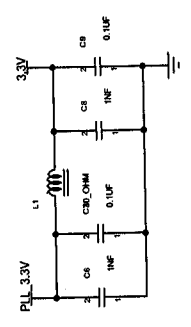
- GPI020: CPU Status LED
- GPI021: Factory Reset Button
- GPI022: Software Debug LED
- GPI023: Software Debug LED
- GPI024: Power LED

BOOTS_EM_A[18:16]
 000 - Reserved
 001 - Boot from CS0 - Flash
 010 - Boot from CS1 - SDRAM
 010 - Boot from CS3 - Asynchronous Memory
 100 - Boot from small (up to 2K) EEPROM through I2C
 101 - Boot from large (up to 64K) EEPROM through I2C
 110 - Reserved
 111 - Boot from V_LYNQ

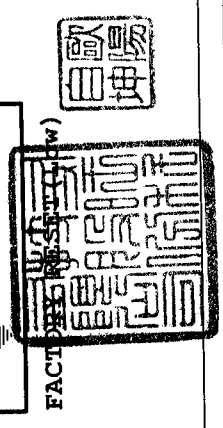
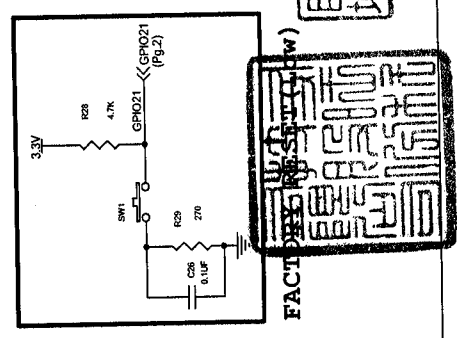
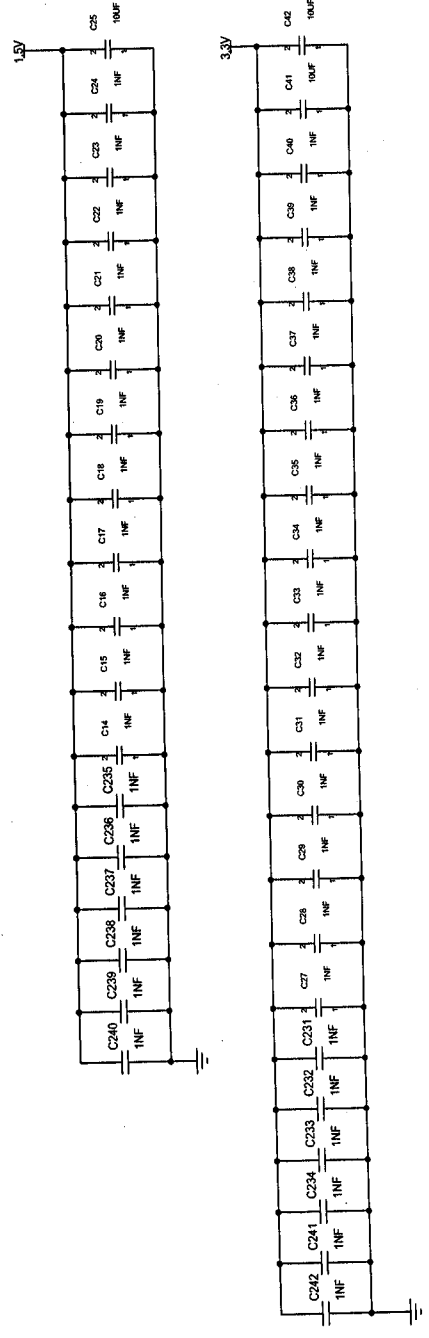
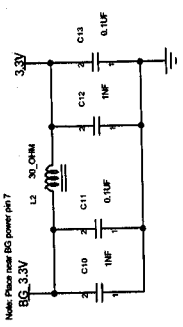
A5	N/A
A6	DEFAULT: 1-Internal default
A7	ETHCNSEL: 1-ETH clock from XTAL_IN
A8	USBPSEL: 1-USB clock from XTAL_IN
A9	SYSPLSEL: 1-System clock from XTAL_IN
A10	N/A
A11	EMIF_TEST: 0-Normal
A12	EMIF_R: 1-Ext. memory Speed as CPU
A13	Wsdsp: 0-Watchdog timer disable bit is writable
A14	Wdts: 0-Watchdog timer enable after reset
A15	PLLYPASS: 0-PLL mode
A16	
A17	
A18	BOOTS(18:16): 001-Boot from external flash
A19	N/A
A20	V_LYNQ_CLK (Default INPUT), 0 - V_LYNQ_CLK is input, 1 - V_LYNQ_CLK is output
A21	ENDIAN: 1-Big Endian
A22	
A23	FLASHW(23:22): 01-Flash Width 16 Bit

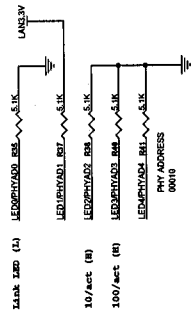
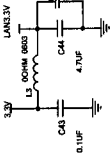


Note: Place near PLL power pin 11

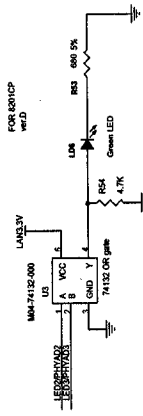


Note: Place near BG power pin 7

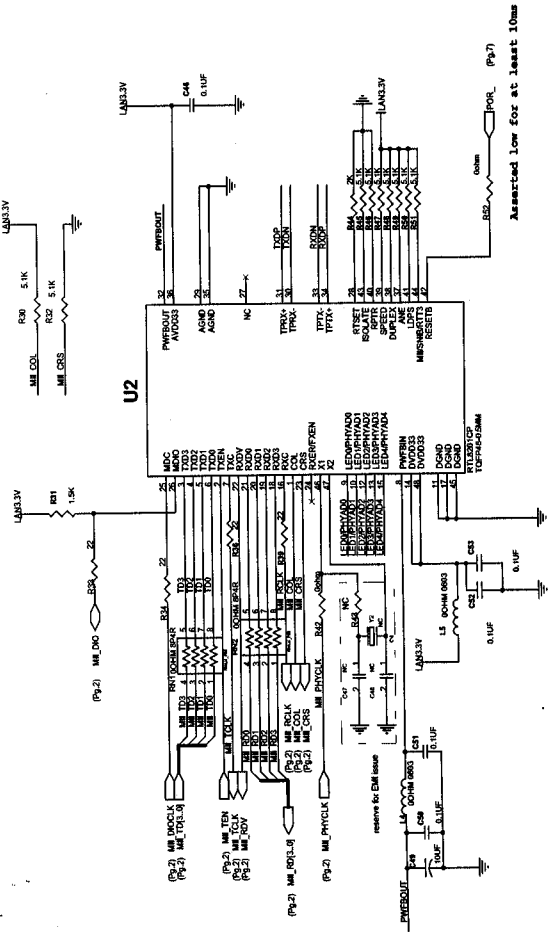
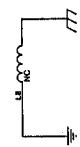




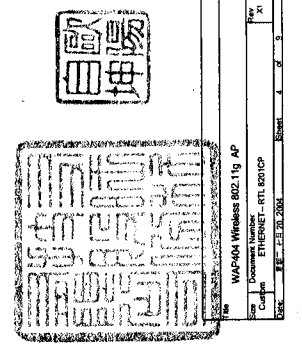
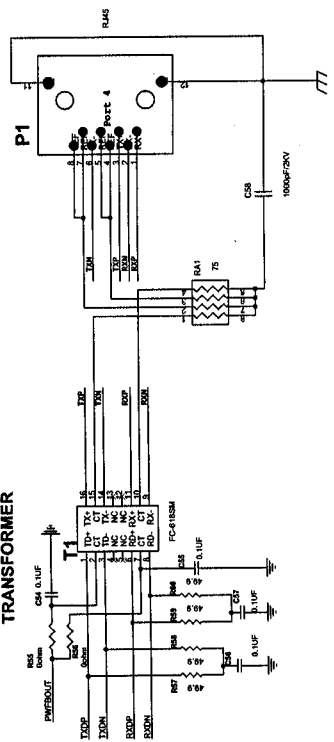
LED Indicator
LAN Link/act



Link	10/act	100/act	OK (OK) output	LED
L	L	L	L	ON
L	blinking	X	blinking	blinking
L	X	blinking	blinking	blinking
H	X	X	H	OFF

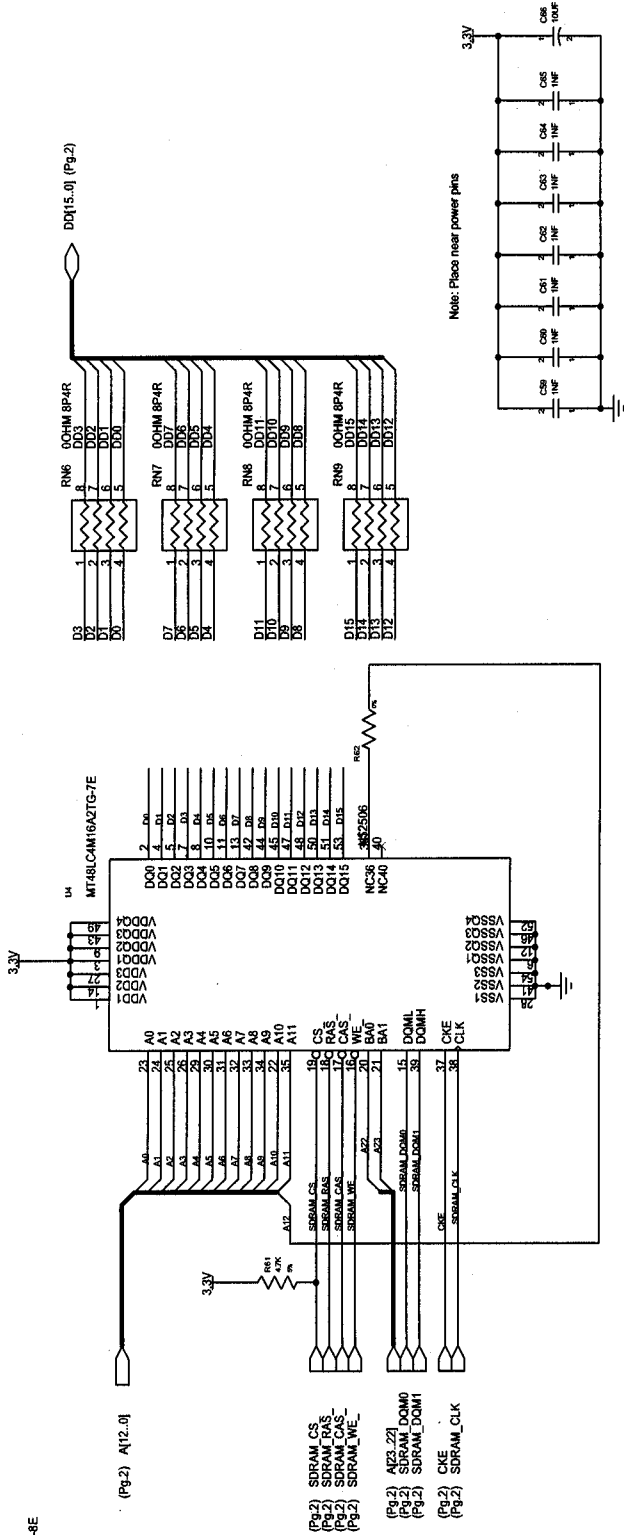


TRANSFORMER



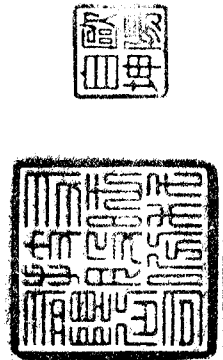
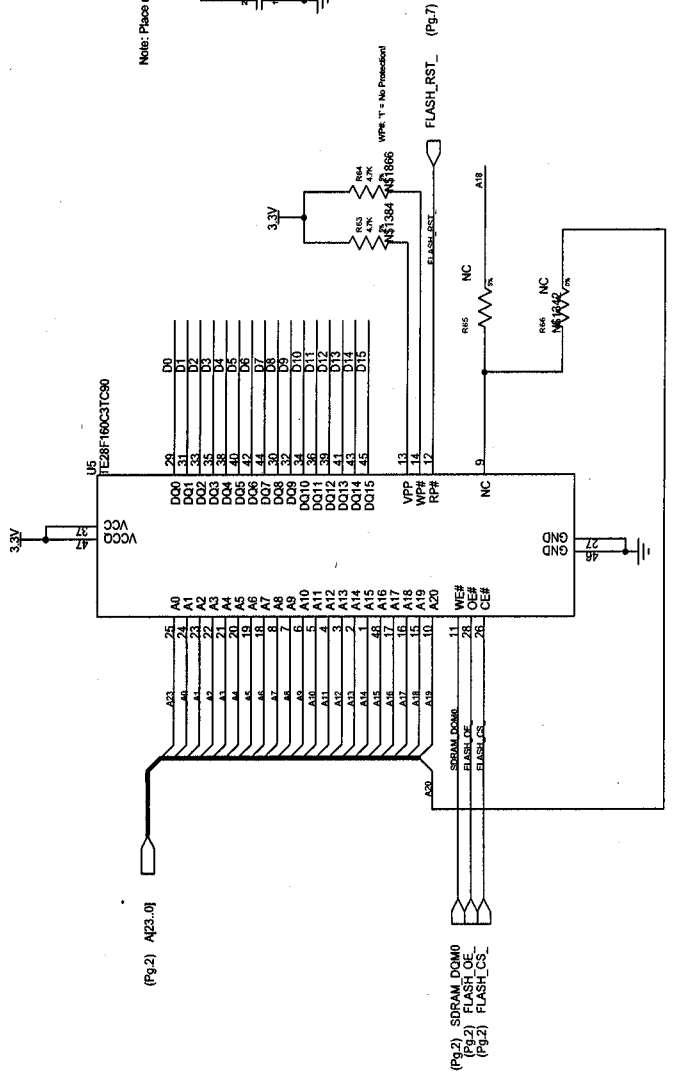
WAP-004 Wireless 802.11g AP
 Document Number: WAP-004-RT-L80211G-CP
 Date: 2004.07.29

SDRAM - 8Mbyte (4M x 16)
 For 16Mbyte SDRAM populate Micron MT48LC8M16A2TG-7E
 For 16Mbyte SDRAM populate R61



FLASH - 2Mbyte (1M x 16)
 For 4Mbyte FLASH populate Intel TE28F160C3TA110

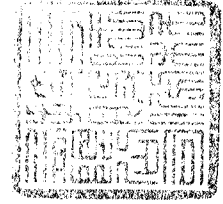
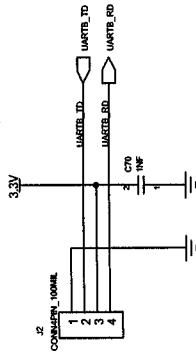
FLASH Change Note:
 1. INTEL TE28F160C3-A19(15), NC(9)
 2. SST 39VF160 -A19(9), NC(15)



Title		WAP404 Wireless 802.11g AP	
Document Number		MEMORY (SDRAM+FLASH)	
Rev	Sheet	5	9
A3	DATE	2004.07.07	

UART#A

Connection for RS232 Adapter Card (PC31 Rev02 3.3V)
(FOR DEBUG ONLY)



Title		WAP404 Wireless 802.11g AP	
Size	Document Number	Rev	XI
A3	MISC_UART+E/JAG	6	of 9
Date:	星期二, 七月 14, 2004	Sheet	6 of 9

