

Bluetooth USB Dongle

Quick Install

Note:

This quick Installation is meant to help you install the product quickly and easily. For detailed instructions on the Bluetooth application, please refer to the User Guide saved in the included CD.

1

Driver Installation

1 Insert the included CD-ROM into your computer. The CD-ROM will run automatically. If the *Auto-Run* function is not functioning, please open the installation CD to find “**Setup.exe**” file and double-click it to continue.

2 On the *Welcome* screen, click **Next**.



3 The installation program will start running automatically. Follow the on-screen instruction to proceed.



4 Click **OK** at the following message



5 When the following message appears, proceed to “**Install the Device**” and click **OK**.



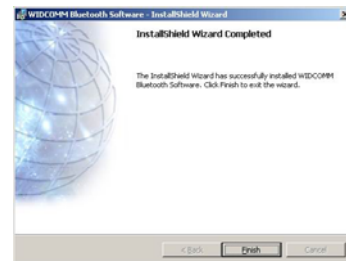
2

Install the Device

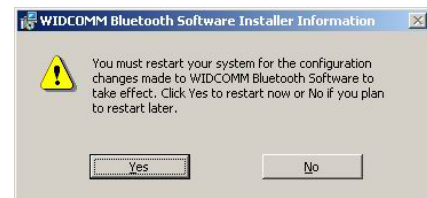
6 Plug the USB adapter to a free USB port on your computer.



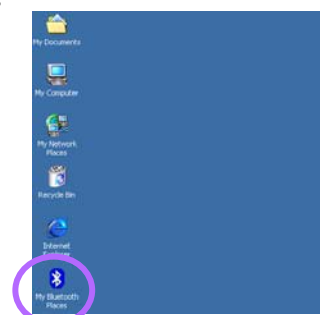
7 Once the device has been inserted to your computer, Windows will detect the new hardware. Windows will then copy necessary files to your computer. Click “**Finish**” to complete the installation.



8 You will be asked to restart your system for the new settings to take effect. Click “**Yes**” to restart immediately or “**No**” to restart later manually.



After completing the installation, the Bluetooth icon will appear on the task bar and the desktop as well. You can open it by double-clicking the icon to start the **Bluetooth Configuration**.



Bluetooth USB Dongle

Quick Install

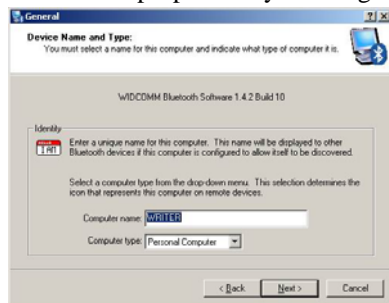
3

Bluetooth Configuration

1. Before using this Bluetooth device on your computer, you must perform the following initial Bluetooth Configuration first. Select the locations you want the Bluetooth icon to appear and click **Next**.



2. You may determine the device properties by entering the computer name and selecting the computer type.



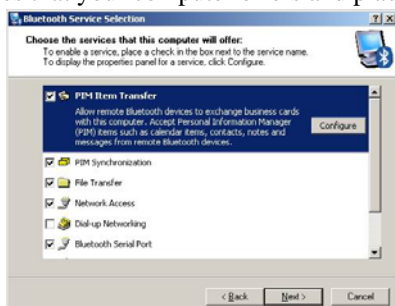
Identity

| | |
|----------------------|--|
| Computer Name | Enter a unique name to identify this computer to other Bluetooth devices in the vicinity; this field cannot be left blank. |
| Computer type | Select either Desktop or Laptop from the drop-down menu to help identify this computer to other Bluetooth devices in the vicinity. |

3. Click **Next**.



4. Choose the services that your computer offers and place a check in front of the items to enable the function, click **Configure** to display the properties then click **Next**.



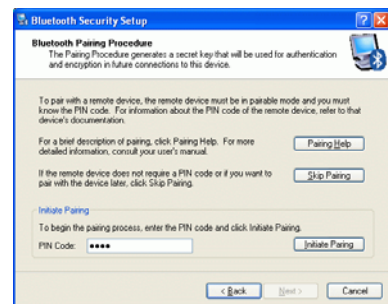
5. When the following figure appears, if you want to search for remote Bluetooth devices to connect, click **Next**; or click **Skip** to search later.



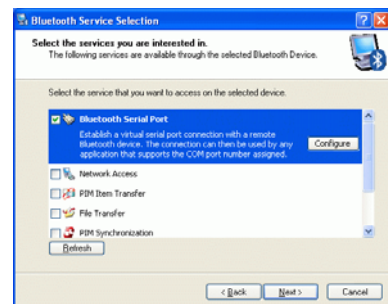
6. After clicking **Next** on last step, the following figure will appear, select a device from the list to establish connection, then click **Next**.



7. Enter the PIN Code if the device you have chosen need one and then click **initial pairing**; if not, click **Skip Pairing**.



8. After the pairing procedure is completed, you may select the services that the remote Bluetooth device is capable of providing and click **Configuration** to display its properties, and then click **Next**.



9. Click **Finish** to complete the Initial Bluetooth Configuration.

Federal Communication Commission Interference Statement

This equipment has been tested and found to comply with the limits for a Class B digital device, pursuant to Part 15 of the FCC Rules. These limits are designed to provide reasonable protection against harmful interference in a residential installation. This equipment generates, uses and can radiate radio frequency energy and, if not installed and used in accordance with the instructions, may cause harmful interference to radio communications. However, there is no guarantee that interference will not occur in a particular installation. If this equipment does cause harmful interference to radio or television reception, which can be determined by turning the equipment off and on, the user is encouraged to try to correct the interference by one of the following measures:

- Reorient or relocate the receiving antenna.
- Increase the separation between the equipment and receiver.
- Connect the equipment into an outlet on a circuit different from that to which the receiver is connected.
- Consult the dealer or an experienced radio/TV technician for help.

This device complies with Part 15 of the FCC Rules. Operation is subject to the following two conditions: (1) This device may not cause harmful interference, and (2) this device must accept any interference received, including interference that may cause undesired operation.

FCC Caution: Any changes or modifications not expressly approved by the party responsible for compliance could void the user's authority to operate this equipment.

IMPORTANT NOTE:

FCC Radiation Exposure Statement:

This equipment complies with FCC radiation exposure limits set forth for an uncontrolled environment. End users must follow the specific operating instructions for satisfying RF exposure compliance.

This transmitter must not be co-located or operating in conjunction with any other antenna or transmitter.