

# **802.11abg Wireless SDIO Card**

User Manual

## **Federal Communication Commission Interference Statement**

This equipment has been tested and found to comply with the limits for a Class B digital device, pursuant to Part 15 of the FCC Rules. These limits are designed to provide reasonable protection against harmful interference in a residential installation. This equipment generates uses and can radiate radio frequency energy and, if not installed and used in accordance with the instructions, may cause harmful interference to radio communications. However, there is no guarantee that interference will not occur in a particular installation. If this equipment does cause harmful interference to radio or television reception, which can be determined by turning the equipment off and on, the user is encouraged to try to correct the interference by one of the following measures:

- Reorient or relocate the receiving antenna.
- Increase the separation between the equipment and receiver.
- Connect the equipment into an outlet on a circuit different from that to which the receiver is connected.
- Consult the dealer or an experienced radio/TV technician for help.

FCC Caution: Any changes or modifications not expressly approved by the party responsible for compliance could void the user's authority to operate this equipment.

This device complies with Part 15 of the FCC Rules. Operation is subject to the following two conditions: (1) This device may not cause harmful interference, and (2) this device must accept any interference received, including interference that may cause undesired operation.

The equipment complies with FCC RF radiation exposure limits set forth for an uncontrolled environment, under 47 CFR 2.1093 paragraph (d)(2).

The 802.11abg Wireless SDIO Card has been tested to the FCC exposure requirements (Specific Absorption Rate).

IC SAR warning:

This device complies with the requirements of Health Canada Safety Code 6 for Canada. Testing was performed on laptop computers with antennas at 5mm spacing. The maximum SAR value is: 0.476 W/kg.

The device must not be collocated with any other antennas or transmitters.

# Table of Contents

Package Contents & System Requirements .....	1
Features.....	1
SD WLAN Module Wireless Networks .....	1
SD WLAN Card Network Scenarios.....	1
Installing the Driver .....	3
Accessing WLAN Utility.....	7
Configuring WLAN Utility.....	7
Wireless tab .....	7
Network Adapters tab.....	8
IP Address tab.....	8
Removing the Driver .....	10

## PACKAGE CONTENTS & SYSTEM REQUIREMENTS

1. Manual (In CD-ROM )
2. Drivers and configuration utilities on CD-ROM
3. Quick Install Guide
4. Product Device

If you miss any of these items please contact your agent.

## FEATURES

The 802.11abg Wireless SDIO Card is a wireless network card that complies with the IEEE 802.11abg standard on wireless LANs (Revision B).

- SDIO Card size as 40 (L) x 24 (W) x 2.1 (H) mm
- SDIO Interface
- Supports the IEEE802.11a/b/g wireless
- High radio performance
- Low power consumption
- Data rates of 6-54Mbps for 802.11a and 1-54Mbps for 802.11g
- Embedded 40MHz reference clock supported
- Sleep clock using 32 KHz clock
- Ready OS support as WinCE 5.0 and 6.0, Linux 2.6.9

## SD WLAN MODULE WIRELESS NETWORKS

### SD WLAN Card Network Scenarios

The 802.11abg Wireless SDIO Card enables you to:

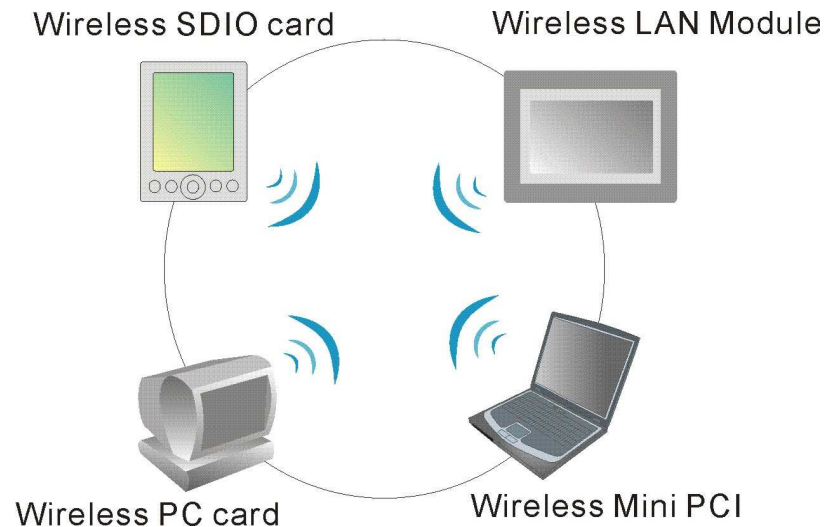
- Connect your computer to a Peer-to-Peer workgroup of wireless computing devices
- Connect your computer to a Small Office/Home Office (SOHO) network that includes Wi-Fi access points
- Connect your computer to a Local Area Network (LAN) Infrastructure that includes the 802.11abg Wireless SDIO Card, or other IEEE 802.11b compliant LAN systems

Wireless stations can be equipped with the 802.11abg Wireless SDIO Card, but also with other WLAN PC Cards. Both of them share the same wireless functionality.

## **Peer-to-Peer (Ad-hoc) Workgroup**

The Peer-to-Peer workgroup configuration enables you to quickly set up a small wireless workgroup, where the workgroup participants can exchange files using features like “Files and Printer Sharing” as supported by Microsoft® Networking.

You can use this option to setup a temporary or Ad-hoc network in environments where no access points are available (for example in Small Office/Home Office “SOHO” environments). As long as the stations are within range of one another, this is the easiest and least expensive way to set up a wireless network.



## **Home Networking**

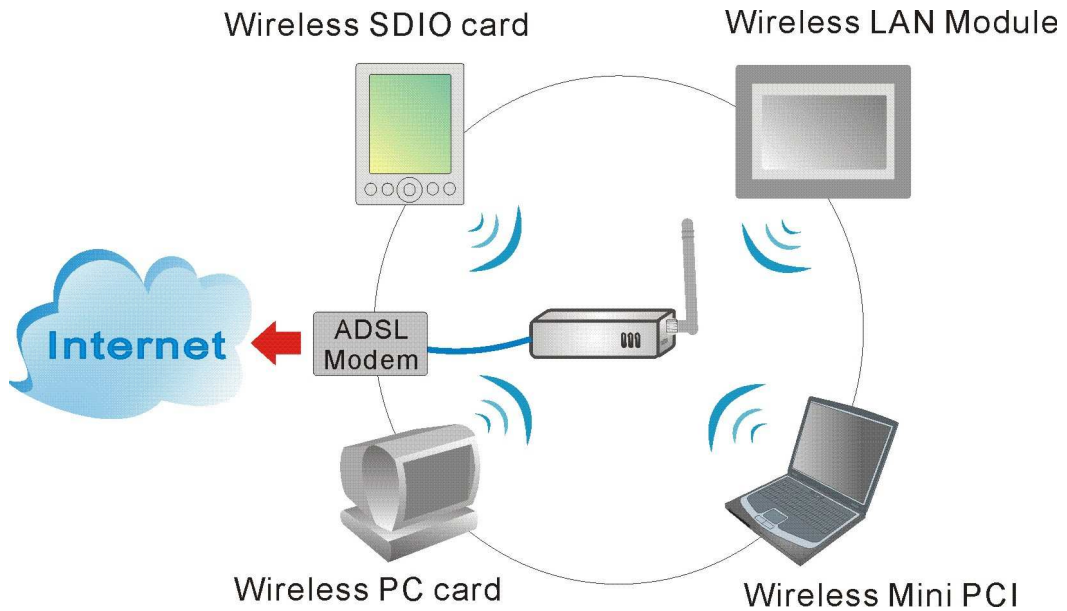
With 802.11abg Wireless SDIO Card, wireless access to the Internet or other devices is at your fingertips. All you need to do is connect the 802.11abg Wireless SDIO Card to an existing access point that may be connected to the external Cable or xDSL modems and you are ready to:

- Share files and printers, and
- Access the Internet

## **Enterprise Networking**

With the Wi-Fi certified access point in the corporate network system, you can connect to a corporate Local Area Network (LAN) infrastructure to access all network facilities in wireless. LAN Infrastructures may either be:

- Stand-alone wireless LANs
- Wireless network infrastructures connected to an existing Ethernet network



## INSTALLING THE DRIVER

### Installation of the 802.11abg wireless SDIO card driver to the PDA via using Microsoft ActiveSync®

1. Connect your PDA to your computer and make sure Microsoft ActiveSync® has established a connection between the two devices.



**Note: Do not insert the 802.11abg Wireless SDIO Card into the card slot of your PDA until the Driver installation has been performed.**

## Important Notice:

The SDIO drivers are based on following CPU type:

- Intel PXA270 for Windows Mobile® 5.0
- Marvell PXA310 for Windows Mobile® 6.0



Please go to **Start > Settings > System** tab > select **About** icon > **Version** tab to check the PDA CPU type.

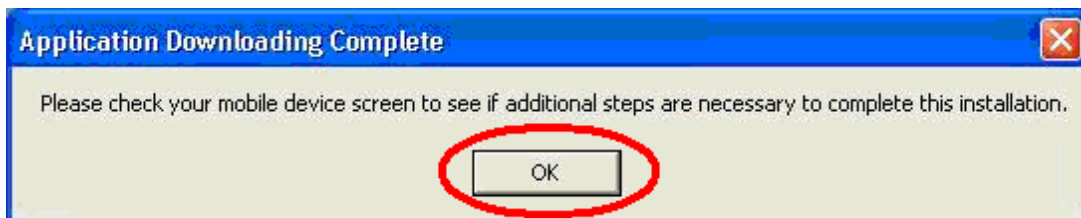
If your PDA CPU is other type, please check with the agent of SDIO card. Due to different PDA CPU type might cause incompatible between the driver and SDIO card.



2. Insert the included CD-ROM to your PC. The Wireless LAN Utility screen will appear, select the Install Driver (WM 5.0 or 6.0) to start driver installation.



3. Click "OK" to complete the driver installation.





4. After finished driver installing, the installed successfully message will show on the PDA screen.



**Note: Do not insert the 802.11abg wireless SDIO card into the card slot of your PDA until the driver installation has been performed.**

## ACCESSING WLAN UTILITY



Go to **Start > Settings > Connections** tab > select the **Wi-Fi** icon to access the Windows CE built-in WLAN utility.

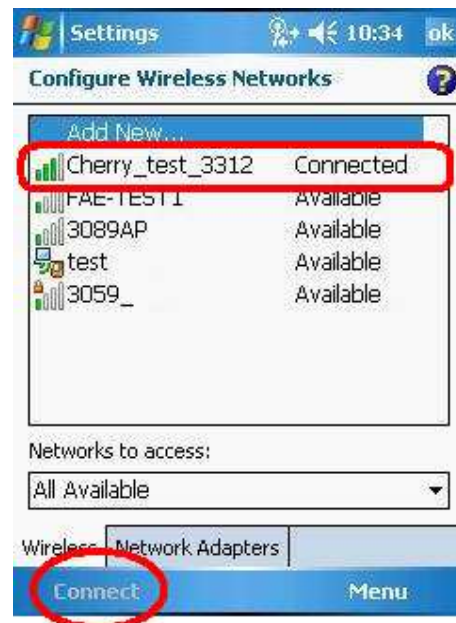


## CONFIGURING WLAN UTILITY

Select an available AP or router from the list and tap **Connect** to make a connection.

### Wireless tab

- **Configure Wireless Networks** Select an available network device from the list and tap **Connect**.
- **Networks to access:** Select the type of network access from the pull-down list.
  - **All Available:** Infrastructure or Ad-hoc mode, a group of wireless devices communicate with both access points and network adapters.
  - **Only access points:** Infrastructure mode, a group of wireless devices communicate directly with only access points.
  - **Only computer-to-computer:** Ad-hoc mode, a wireless device communicates directly with each other without using an access point.



## Network Adapters tab

### Configure Network Adapters

- **My network card connects to:**  
Tap **Work** or **The Internet** from the pull-down menu.
  - **Work:** Connects to the network in your office.
  - **The Internet:** Connects to your ISP at home.
- **Tap an adapter to modify settings:**  
Tap an adapter from the list to enter its configuration screen.  
Or select an adapter then tap **Edit** at the left-down corner of the screen to enter its configuration settings page.

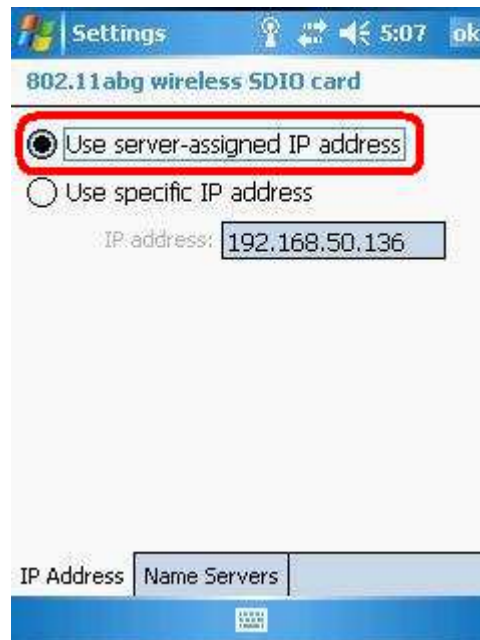


If **802.11abg wireless SDIO card** is tapped, the following screen will appear for you to configure:

## IP Address tab

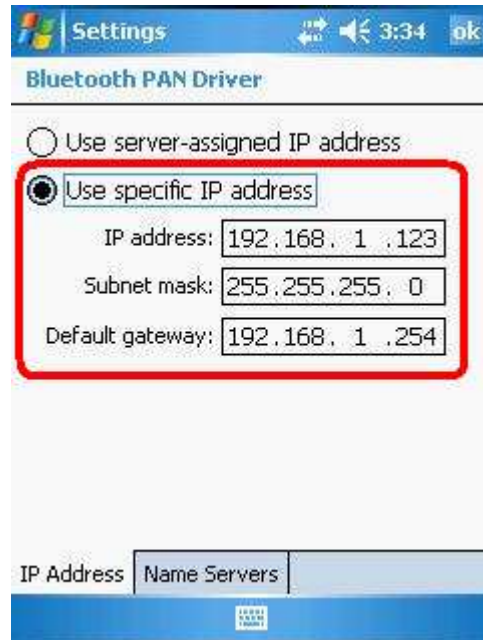
### ☉ Use server-assigned IP address

Tap **Use server-assigned IP address** to obtain an IP address automatically. The wireless router will act as a DHCP server. An IP address will be assigned from the wireless router.



### ⊙ Use specific IP address

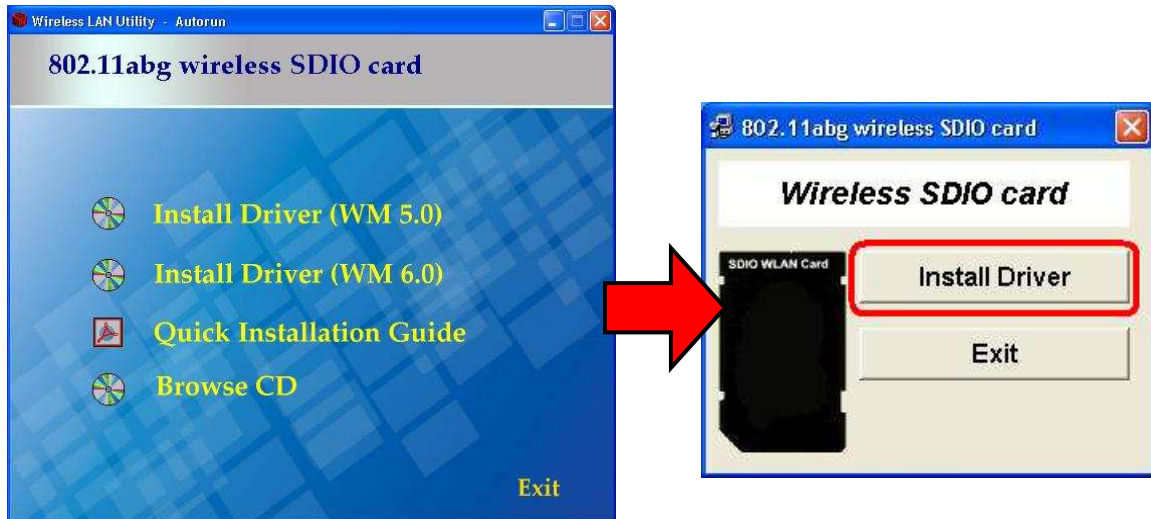
- **IP address:** Enter the IP address (within the range of the wireless router's IP address, for instance, if the IP address of the router which you would like to connect is 192.168.1.254, you may enter the IP address from 192.168.1.1 to 192.168.1.253, such as 192.168.1.123)
- **Subnet mask:** The subnet mask, for example, 255.255.255.0, must be the same as that set on your Ethernet network.
- **Default gateway:** Enter the IP address of your network's gateway, such as 192.168.1.254. The gateway is the device that enables communication between your computers and the Internet. In most cases, your router acts as your gateway.



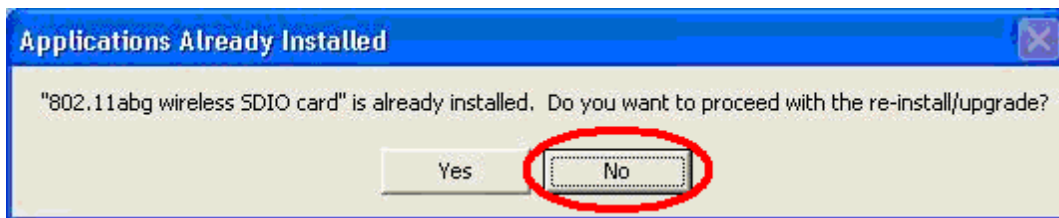
## REMOVING THE DRIVER

If you would like to remove the driver from your PDA, please make a connection between the PDA and your computer via Microsoft ActiveSync® and then insert the CD-ROM into your PC.

1. Select the **Install Driver (WM 5.0 or 6.0)** to start to REMOVE the driver.



2. If you would like to re-install or upgrade the driver, please click **“Yes”**; if not, please click **“No”** to process removal.



3. Select the **802.11abg wireless SDIO card** item, and then click **“Remove”** button to uninstall the program.



4. Click **“OK”** to confirm removing the application.



5. Click “OK” to complete the uninstallation.

