

**EUT : 1M Phonenumber Network, 10/100 Fast Ethernet PC Card**

**FCC ID : MQ4HF1KA**

**AboCom Systems, Inc.**

**USER'S MANUAL**

## **FEDERAL COMMUNICATIONS COMMISSION**

### **NOTE**

This equipment has been tested and found to comply with the limits for a Class B digital device, pursuant to Part 15 of the FCC Rules. These limits are designed to provide reasonable protection. This equipment generates, uses and can radiate radio frequency energy and, if not installed and used in accordance with the instructions, may cause harmful interference to radio communications. However, there is no guarantee that interference will not occur in a particular installation. If this equipment does cause harmful interference to radio or television reception, which can be determined by turning the equipment off and on, the user is encouraged to try to correct the interference by one or more of the following measures:

- Reorient or relocate the receiving antenna.
- Increase the separation between the equipment and receiver.
- Connect the equipment into an outlet on a circuit different from that to which the receiver is connected.
- Consult the dealer or an experienced radio/TV technician for help.

Changes or modifications not expressly approved by the party responsible for compliance could void the user's authority to operate the equipment.

# CONTENTS

<b>INTRODUCTION .....</b>	<b>1</b>
<b>HARDWARE INSTALLATION.....</b>	<b>1</b>
<b>SOFTWARE INSTALLATION.....</b>	<b>1</b>
<i>Novell Netware .....</i>	<i>1</i>
<i>MS LAN Manager.....</i>	<i>6</i>
<i>Packet Driver.....</i>	<i>9</i>
<i>Windows for Workgroups 3.11 .....</i>	<i>9</i>
<i>Windows NT 3.51.....</i>	<i>14</i>
<i>Windows NT 4.0.....</i>	<i>15</i>
<i>Windows 95 Installation.....</i>	<i>16</i>
<i>Artisoft Lantastic 6.0 Installation.....</i>	<i>17</i>
<i>IBM OS/2 Warp.....</i>	<i>18</i>
<b>GENERAL INFORMATION.....</b>	<b>1</b>
<i>NOTES FOR NDIS DRIVER .....</i>	<i>1</i>
<i>NOTES FOR PACKET DRIVER.....</i>	<i>2</i>
<i>NOTES FOR WINDOWS FOR</i> <i>WORKGROUPS DRIVER .....</i>	<i>3</i>
<b>QUESTIONS AND ANSWERS.....</b>	<b>1</b>
<b>SPECIFICATIONS .....</b>	<b>1</b>

# INTRODUCTION

## ABOUT THIS MANUAL

This manual will explain how to install and use your 10/100Mbps dual speeds Fast Ethernet PC Card. The following guideline will help you through the installation process.

How to install the Card and Connect it to network

→ Chapter 1. Hardware Installation

How to install the network driver

→ Chapter 2. Software Installation

How to do trouble shooting

→ Chapter 4. Questions and Answers

Detail Specification

→ Appendix A Specifications

## SYSTEM REQUIREMENTS

- An IBM compatible notebook computer with 386SX or faster processor
- At least one type II PC Card socket
- Drivers and utilities provided with this product
- PCMCIA release 2.1 compliant Card Services and Socket Services
- 100Base-TX Fast Ethernet or 10BaseT Ethernet connectivity to your local area network.

## OPERATING ENVIRONMENT

- Novell Netware 3.x, 4.x

---

on

- Microsoft LAN Manager
- Packet Driver Applications
- Microsoft Windows for Workgroups 3.11
- Microsoft Windows 3.1
- Microsoft Windows NT 3.51, NT 4.0
- Windows 95
- Lantastic 6.0
- IBM OS/2 Warp Version 3

### **CONTENTS IN THE PACKAGE**

- Fast Ethernet PC Card Adapter
- Media coupler with single RJ-45 connector for 10BASE-T and 100BASE-TX network.
- 3.5" driver diskette
- User's Manual
- Plastic protection case for base PC Card

## **HARDWARE INSTALLATION**

This chapter describes how to install the dual speeds Fast Ethernet PC Card in your notebook computer and connect it to network. It's referred to "the PC Card" in this manual.

The PC Card could be connected to either 100Mbps Fast Ethernet or 10Mbps Ethernet over unshielded twisted pair (UTP) cable. The PC Card have the ability automatic sensing and operating on either speed without manual reconfiguration.

Please refer to **Chapter.3 Software Installation** on how to install network drivers using menu driven installation utility.

---

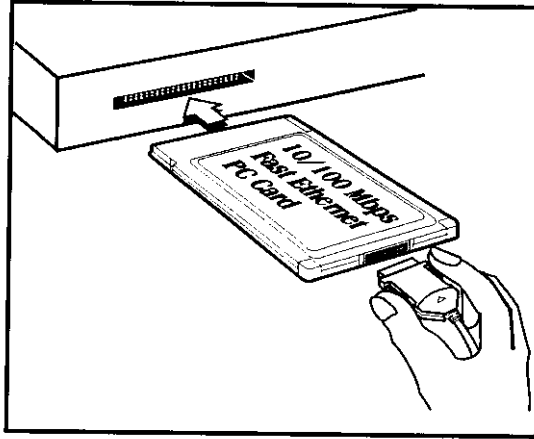
### **Inserting the Dual Speeds Fast Ethernet PC Card**

1. Hold the PC Card with wide connector toward the slot and the brand label facing upward.
2. Insert the PC Card and push it firmly into the bottom.  
( Please see the figure on the next page for reference)

---

**Removing the Dual Speed Fast Ethernet PC Card**

It's quite different for various computer mechanical design. Please refer to the PC Card removal instruction in the document for your notebook computer.



---

**Connecting and Removing the Cable of Media Coupler to the PC Card**

Grasp the PC Card 15-pins connector at the end of the media coupler with the pointing triangle facing upward. Gently insert it into the mating connector on the PC Card until it clicks in place at both sides.

Attention should be paid when removing the 15-pins connector. Please press the both sides of the connectors before dragging out of the PC Card.

---

### Connecting to the Network

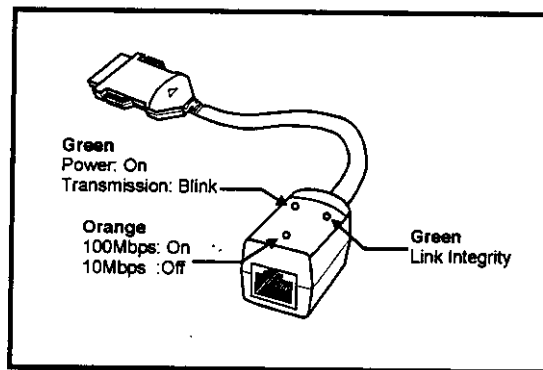
Connect unshielded twisted pair (UTP) cable to the RJ-45 connector of media coupler before loading any network driver.

● For operation in the 100Mbps (100Base-TX) Ethernet network, a Category 5 unshielded twisted pair (UTP) cable should be used to connect between media coupler and 100Mbps hub or switch.

● For operation in the 10Mbps (10Base-T) Ethernet network, Category 3, 4 or 5 unshielded twisted pair (UTP) cable could be used to connect between the media coupler and a 10Mbps hub or switch.

---

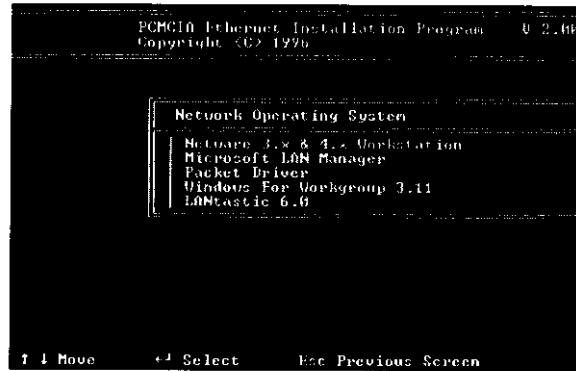
### LED Indicators





## SOFTWARE INSTALLATION

Plug the driver diskette into the floppy drive and set the current drive to the floppy drive. Then run *INSTALL* to install the real mode drivers such as ODI or NDIS 2.x or Packet Drivers into the target disk.



---

### Novell Netware

There are two methods to install the Netware client ODI driver, the menu installation and Netware 3.12 or 4.x Client installation.

#### *Menu Installation*

1. Run *INSTALL.EXE* from the root directory of driver diskette.

**Installation**

---

2. Select *Netware 3.x and 4.x Workstation* item from menu.
3. If current settings are acceptable, select *Start Installation* and go to step 5. Otherwise, select *Modify Parameters* to make settings changed
4. Move cursor to focus on the setting you want to make change and press <Enter> to select a fit value. When the configurations are set completely,  
  
press <Enter> on the **OK** field to exit the screen and go back to step 3.
5. Installation program starts copying related files from diskette to the destination directory and modifies AUTOEXEC.BAT and NET.CFG under user's agreement
6. Now, the installation is completed. Please reboot the computer to make your Netware connection.

## Software installation

```
PCMCIA Ethernet Installation Program  V 2.00
Copyright (C) 1996

PCMCIA Ethernet Card

LAN IRQ Level  = 11
LAN I/O Base   = 320
Network OS     = Netware 3.x & 4.x
Frame Type     = Ethernet 802.2
Target Path    = C:\NE1000\

Driver Install
Start Installation
Modify Parameters

↑ ↓ Move      ← → Select      Esc Previous Screen
```

If you wanted to install the ODI driver by manual, you may follow the instructions list below.

1. Copy the files LE100ODI.COM and NET.CFG from the path \NETWARE and the file LANEN.EXE from the path \ENABLER in the driver diskette into the Netware client directory containing Novell's LSL.COM, IPXODI.COM and NETx.COM files.
2. Using a text editor to edit the NET.CFG for setting the default frame type. In the Netware server the frame type is set to 802.3 for NW3.11 and 802.2 for NW3.12 and NW4.x . The frame type must be set to the same with the server or the client couldn't login to the server.
3. Follow Novell's instructions on using ODI programs. You can substitute the

**Installation**

LE100ODI.COM whenever a reference is made to the **Hardware Specific Module**.

4.A typical ODI workstation startup batch file includes:

```
>LANEN //IRQ=dd //IOP=xxx Card Enabler
>LSL ;Link Support Layer Module provided by
Novell
>LE100ODI ;Hardware Specific Module
>IPXODI ;IPX Protocol Stack Module provided by
Novell
>NETx ;Shell Support Module provided by
Novell
>LOGIN
```

**Novell Client Installation**

1.Run the NetWare Client Install V1.21

-Get the 4 Client disks from the network administrator, or

-Run the \NWCLIENT\INSTALL.EXE in a previous Installation

2.A message appears on the screen asking you whether or not you want the program to perform modifications on your AUTOEXEC.BAT and CONFIG.SYS files.

3.Answer "Yes". The program then modifies your AUTOEXEC.BAT and CONFIG.SYS files accordingly and creates backup copies.

4.The following message appears:

-Install support for MS Windows? (Y/N):