

AboCom

HomeLink Phonenumber 10M Network

CardBus PC Card

(HC2000MX)

User Guide

REGULATORY STATEMENTS

Part 15, Class B

This device complies with Part 15 of FCC rules. Operation is subject to the following two conditions:

1. This device may not cause harmful interference, and
2. This device must accept any interference received, including interference that may cause undesired operation. This equipment has been tested and found to comply with the limits for a Class B digital device, pursuant to Part 15 of the FCC Rules. These limits are designed to provide reasonable protection against harmful interference in a residential installation. This equipment generates, uses and can radiate radio frequency energy, and if not installed and used in accordance with the instructions, may cause harmful interference to radio communications. However, there is no guarantee that interference will not occur in a particular installation. If this equipment does cause harmful interference to radio or television reception, which can be determined by turning off and on, the user is encouraged to try to correct the interference by one or more of the following measures:
 - Reorient or relocate the receiving antenna.
 - Increase the distance between the equipment and receiver.
 - Connect the equipment into an outlet on a circuit different from that to which the receiver is connected.

⚠ Changes or modifications not expressly approved by party responsible for compliance could void the user's authority to operate the equipment.

FCC Part 68 Registration

This device complies with FCC Part 68 rules, and the use of this device is subject to the following restrictions:

The FCC has established rules which permit this device to be directly connected to the telephone network.

Standardized jacks are used for these connections. This equipment should not be used on party lines or coin phones. If this device is malfunctioning, it may also be causing harm to the telephone network; this device should be disconnected until the source of the problem can be determined and until repair has been made. If this is not done, the telephone company may temporarily disconnect service.

The telephone company may make changes in its facilities, equipment, operation and procedures; if such changes affect the compatibility or use of this device, the telephone company is required to give adequate notice of the situation with the FCC.

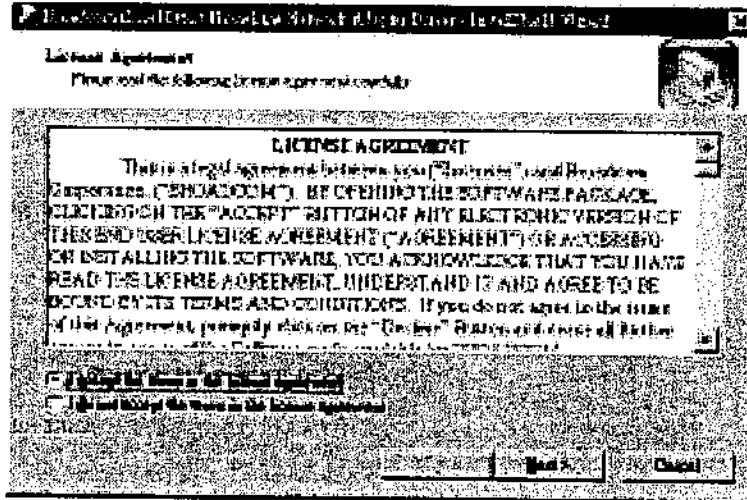
If the telephone company requests information on what equipment is connected to their lines, inform them of:

- a. The telephone number to which this unit is connected.
- b. The Ringer Equivalence Number (REN).
- c. The USOC jack required.
- d. The FCC Registration number.

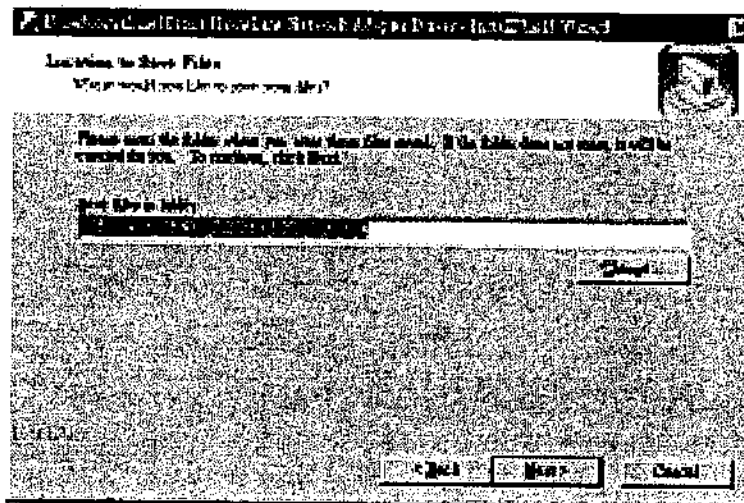
Items (b) and (d) are indicated on the label. The Ringer Equivalence Number (REN) is used to determine how many devices can be connected to your telephone line. In most areas, the sum of the REN's of all the devices on any one line should not exceed 5.0. If too many devices are attached, they may not ring properly.

SOFTWARE INSTALLATION

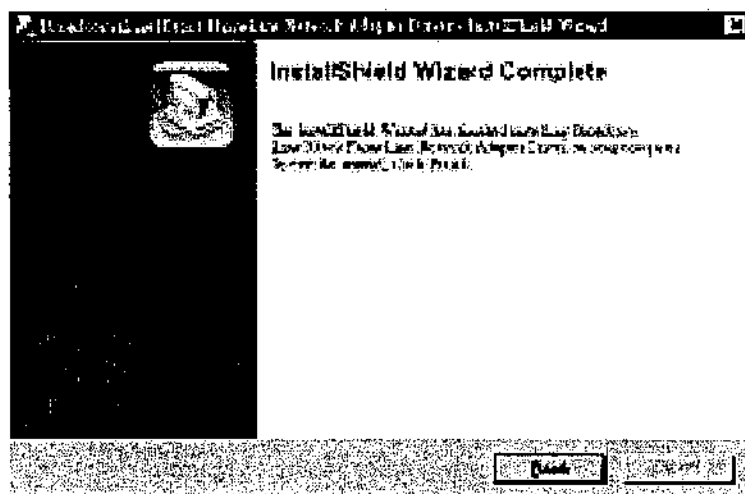
1. Run driver program in floppy disk. Click Next.



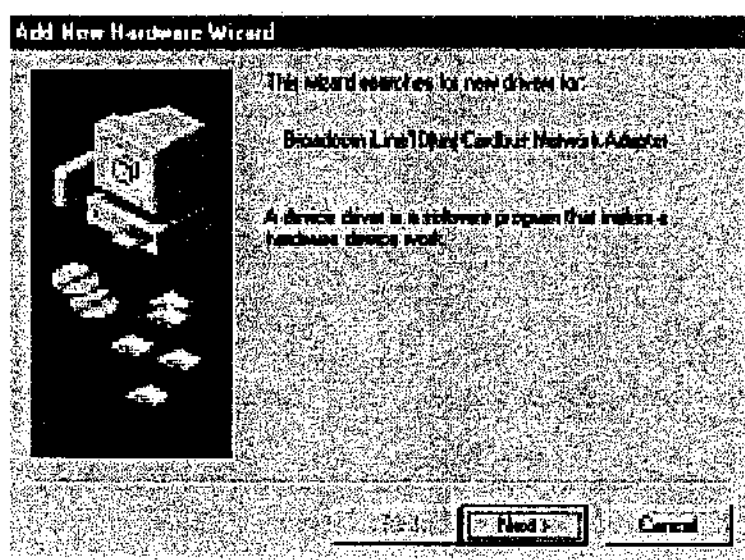
2. Save driver files in folder.



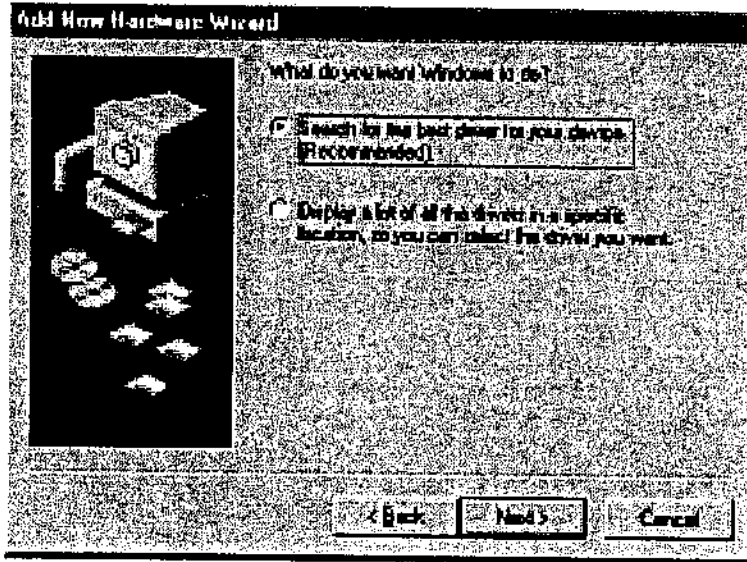
3. Files copy complete.



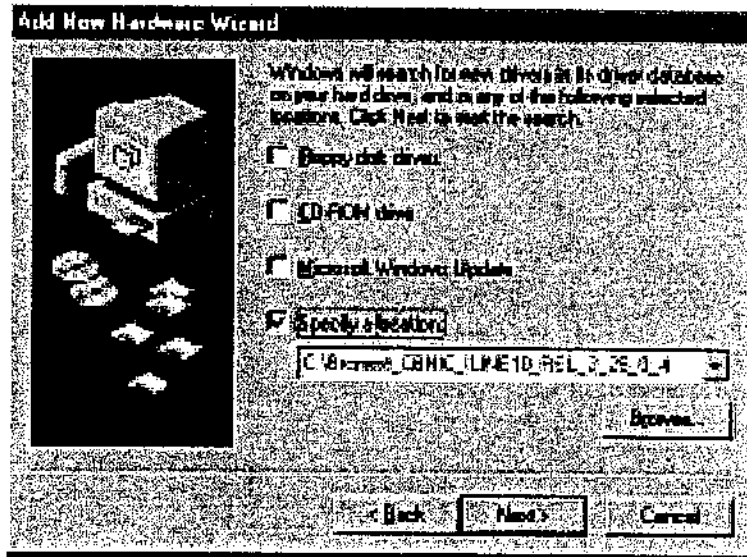
4. Plug-in HC2000MX to CardBus slot



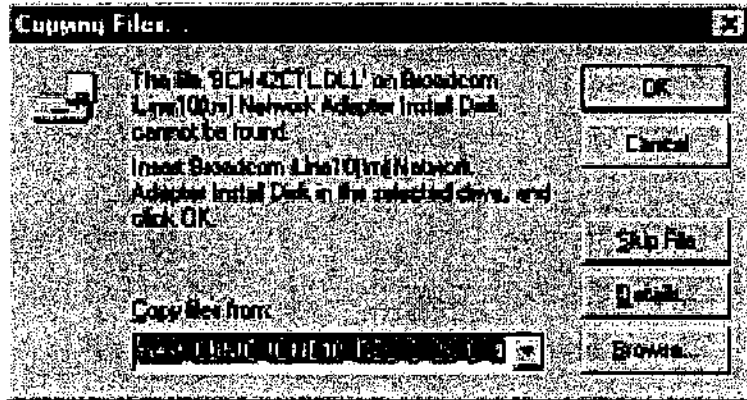
5. Search for the Best driver for your device.



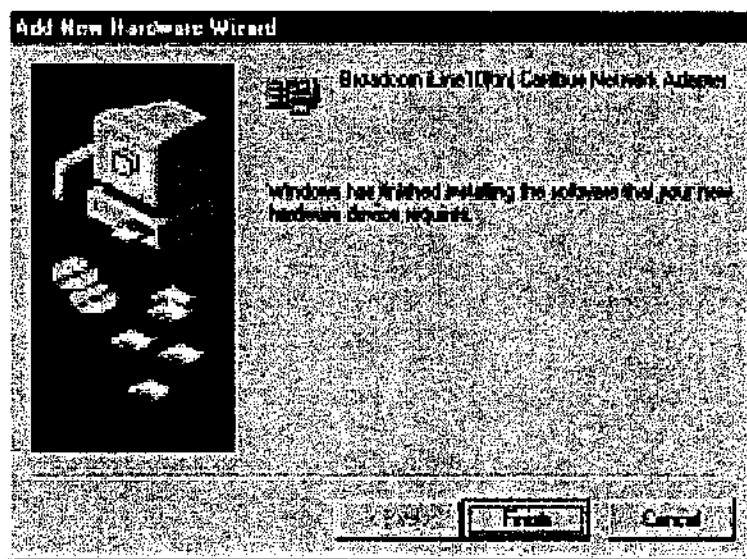
6. Specify a location.

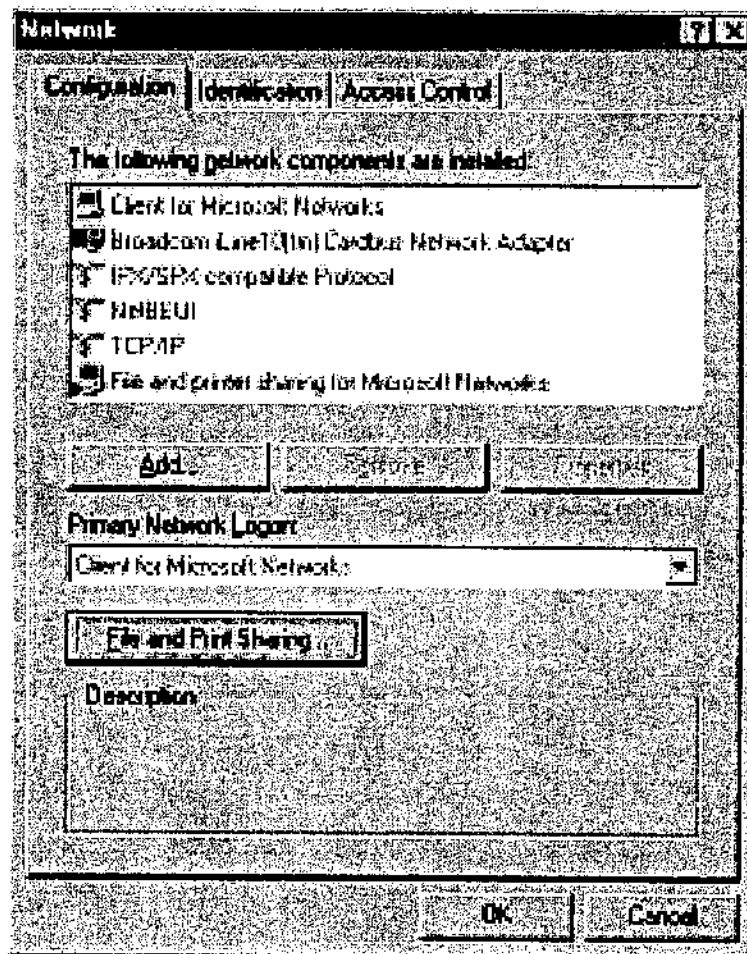


7. Copy driver from folder.

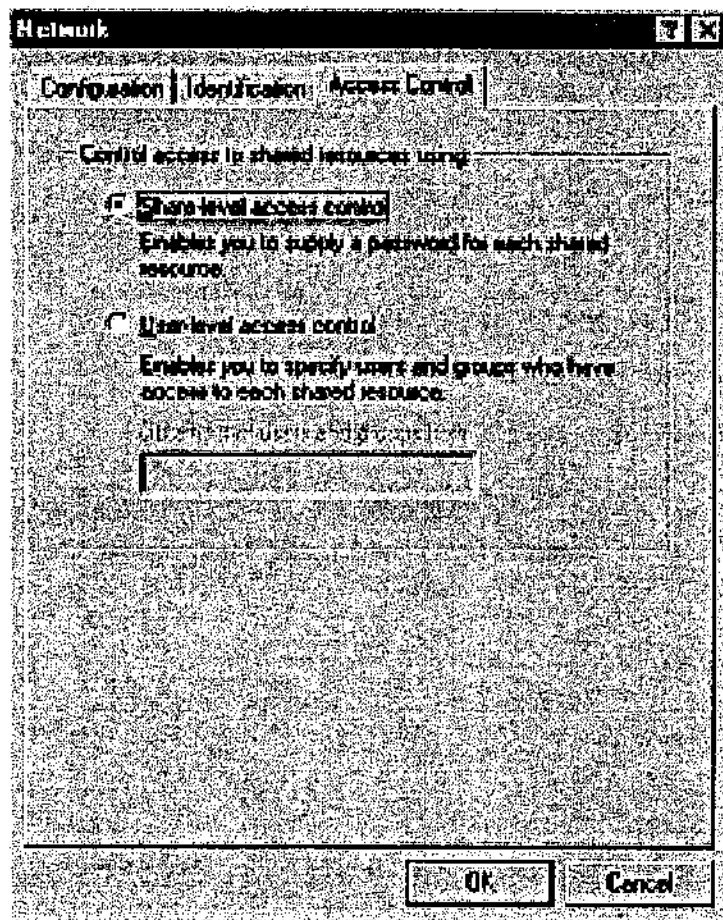


8. Driver install finish.





9. If you are missing required components, you'll need to install them manually. If you need to install the TCP/IP Protocol, contact your system administrator or refer to the Windows 98 documentation.
10. In the **Primary Network Logon** box, select **Client for Microsoft Networks**.
11. Click the **Identification** tab. Enter the required information appropriately.
12. Click the **Access Control** tab. Make sure that **Shared-level access control** is selected.



13. When finished, remember to restart your computer to activate the new device.

Once the computer has restarted and Windows 98 has booted up, the **Link** light will be on. And a **Logon** window will appear requiring you to enter a username and password. Make up a username and password, enter them, and click **OK**.

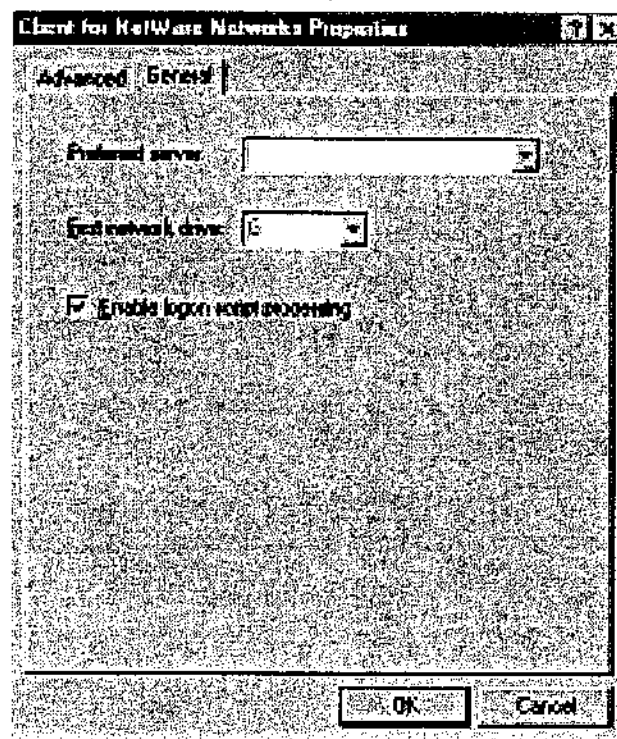
Once you are at the Windows 98 desktop, double-click the **Network Neighborhood** icon. You should see the name of the network, and/or the names of the other PCs on the network.

Client Setup

If you are not using Windows 98 with an NT or NetWare file server, skip the next two paragraphs. Perform the following procedures to prepare your computer to be used with any file servers that may be on the network.

Connecting to a NetWare File Server

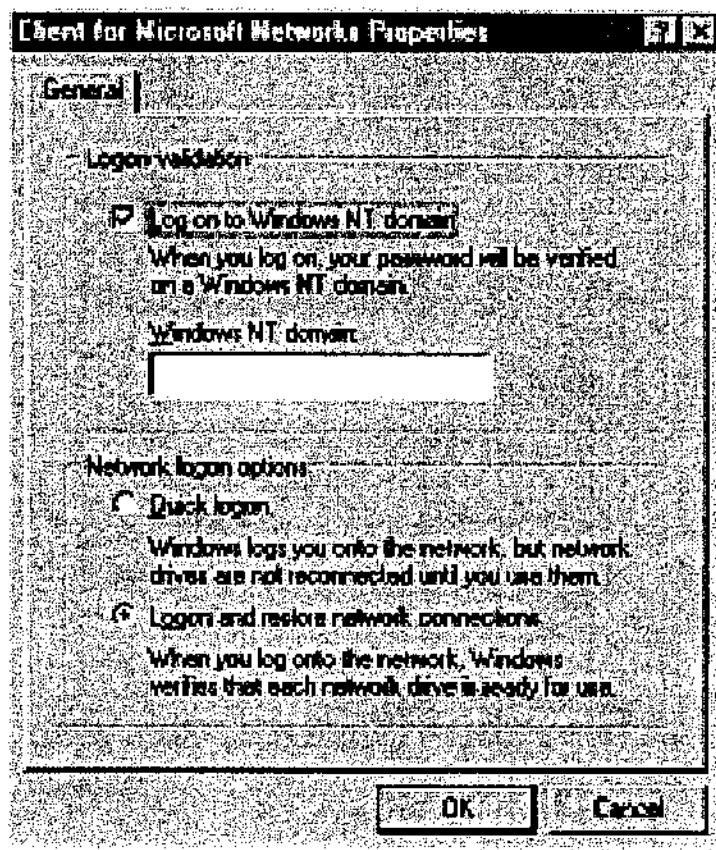
1. Click **My Computer**, **Control Panel**, and **Network**.
2. Change the **Network Logon** to **Client for NetWare Network**.
3. Double-click the **Client for NetWare networks**. Put your server's name in the **Preferred Server** box. Click in the **Enable Logon Script Processing** box.



4. Click **OK** and restart your PC.

Connecting to a Windows NT Domain

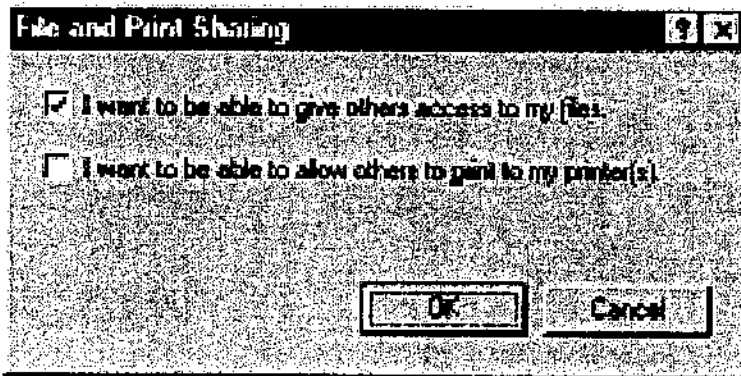
1. Click **My Computer**, **Control Panel**, and **Network**. Change the **Primary Network Logon** to **Client for Microsoft Network**.
2. Double-click the **Client for Microsoft networks**.
3. Select the **Log on to Windows NT domain** box. Put your NT domain name in the Windows NT domain area.
4. Click **OK** and restart your PC.



5. When finished, restart your computer.

Using File and Printer Sharing

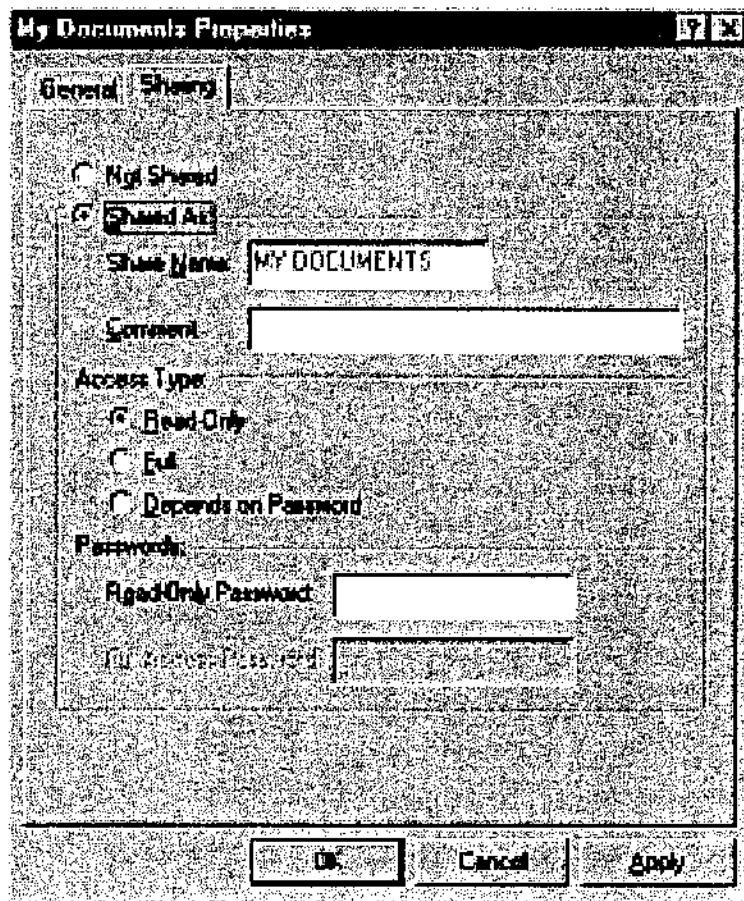
1. Click **Start, Settings, Control Panel**. Double-click **Network**.
2. Click the **Configuration** tab, followed by the **File and Printer Sharing** button. The **File and Printer Sharing** window will appear.



- If you'd like others to be able to access the files on your PC's hard drive, select **I want to be able to give others access to my files**.
 - If you'd like to share your printer with other users on the network, select **I want to be able to allow others to print to my printer**.
3. Click the **OK** button. **File and Printer Sharing for Microsoft Networks** should now appear in the list of installed components. Click **OK**. When asked to restart your PC, choose to do so.

Enabling File Sharing

1. Double-click **My Computer**. A window of available disk drives will appear.
2. Right-click once the drive or folder that you want to make available to other users.
3. Click **Sharing**, followed by the Sharing tab. Click **Share As**. In the Share Name box, enter a name for the drive or folder you are sharing, (eg: C-Drive, CD-ROM, Leela, etc.).



Next, decide on the type of access that you want to give other users.

- Read-Only access lets other users view the files on your PC.
- Full access lets users create, change, or delete files on your PC.
- Depends on Password lets users have Read-Only and/or Full access, depending on the password that you decide to give them.

Use your mouse to select the type of file sharing access that you want other users to have. If you want to assign access password(s), type them into the Password box(es).

If you are sharing a cable modem or DSL broadband connection that you will be using to access the Internet, you should protect all of your shared drives and printers with private passwords.

When finished, click **Apply**, followed by **OK**.

Enabling Printers Sharing

Click **Start**→**Setting**→**Printers**. A window of available printers will appear.

Right-click the printer that you want to share with other users. Click **Sharing**, followed by the **Sharing** tab. Click **Share As**. In the Share Name box, give a name to the printer you're about to share (Jack's HP4, for example). If you want to assign a password to the printer so only certain users can access it, type a password in the Password box. When you're done, click **Apply**, followed by **OK**. Your printer(s) are now shared.