


EXHIBIT A - FCC ID LABELING AND LOCATION

FCC ID Label

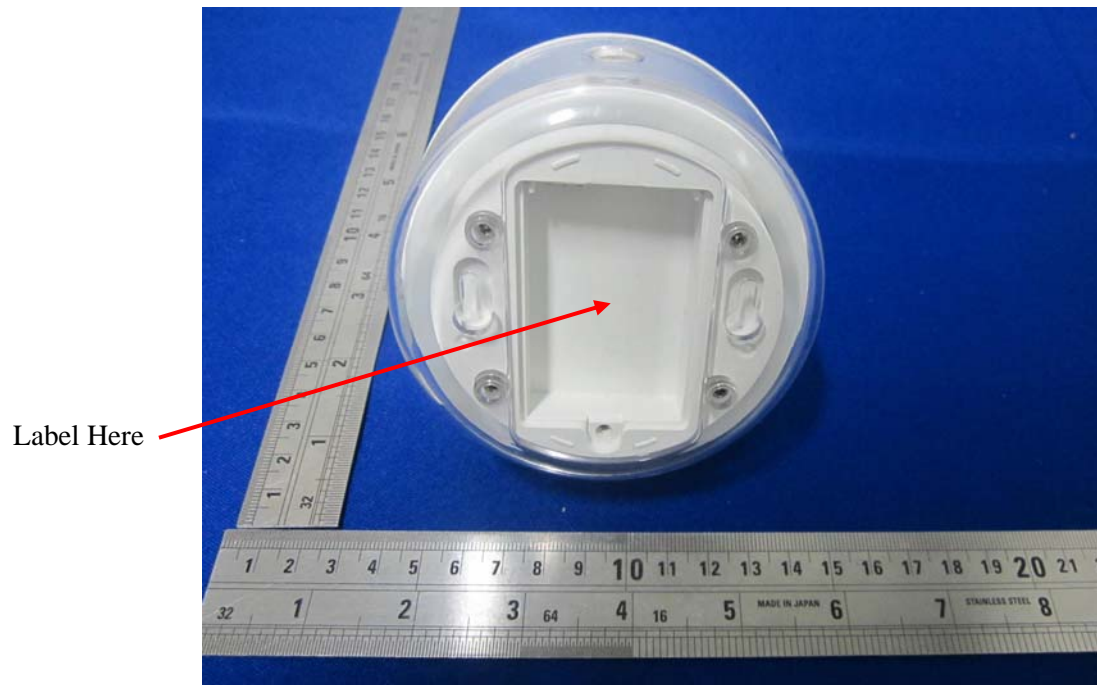
	Dorel Juvenile Group Limited	Li-ion Battery
	Model: 08903	3.7V, 2000mAh
	FCC ID: MNJ08903TX	Rechargeable Battery Only
	IC: 4703B-08903TX	

This device complies with part 15 of the FCC Rules. Operation is subject to the following two conditions: (1) this device may not cause harmful interference, and (2) this device must accept any interference received, including interference that may cause undesired operation.

Cet appareil est conforme à l'article 15 des règlements de la FCC. Son fonctionnement est assujéti aux deux conditions suivantes : (1) cet appareil ne peut pas causer de brouillage préjudiciable et (2) il doit accepter tout brouillage reçu, y compris un brouillage pouvant causer un fonctionnement indésirable.

Date Code: YMMDDAH

Proposed FCC ID Label Location



The label shown shall be permanently affixed at a conspicuous location on the device and be readily visible to the user at the time purchase (Labeling requirements per 2.925)