

hp

REF 97.0 dB $\mu$ V

AT 10 dB

MKR 2.70 MHz

-62.56 dB

PEAK

LOG

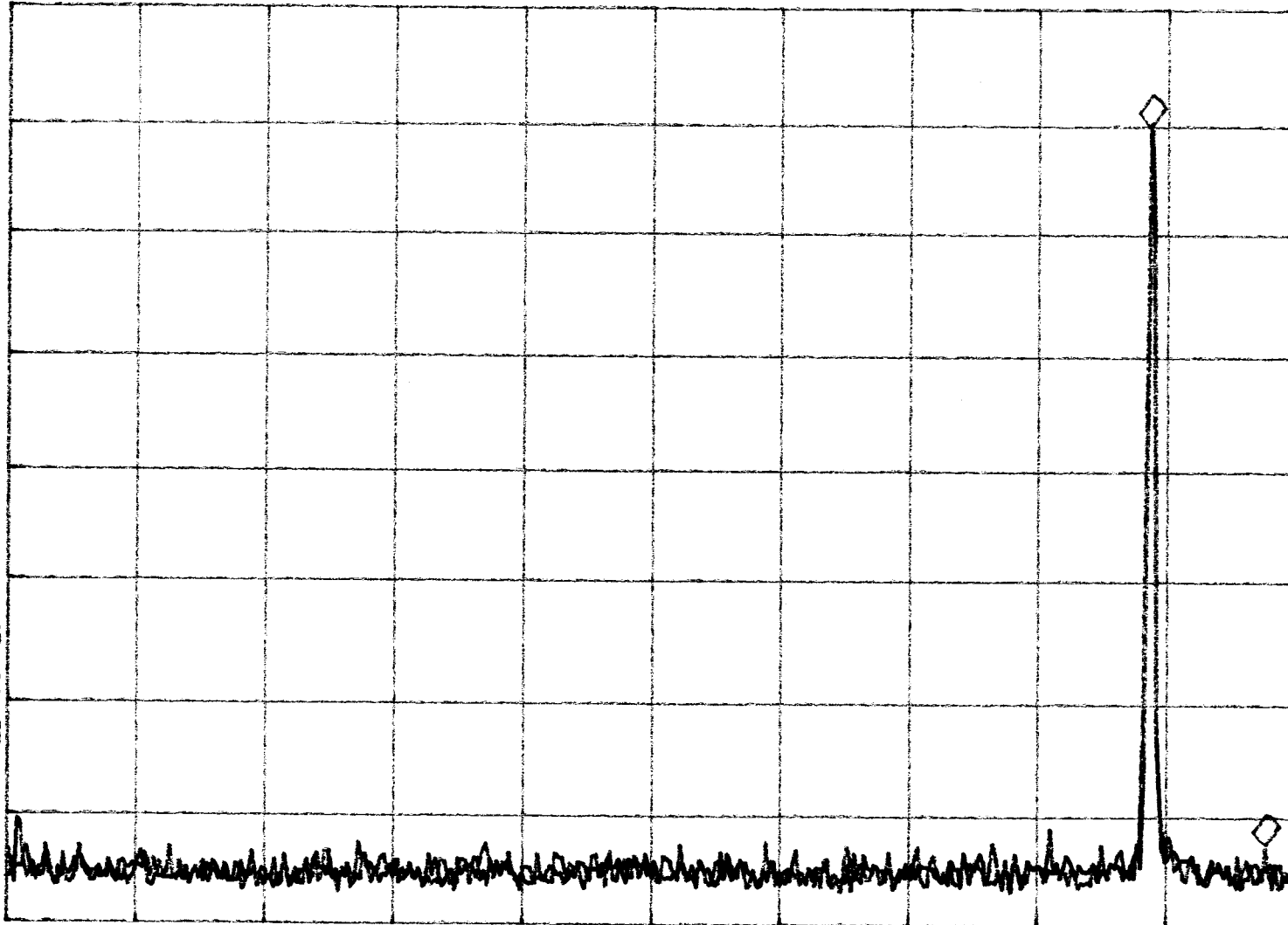
10

dB/

VA VB

SC FC

CORR



START 900.00 MHz

#RES BW 30 KHz

STOP 930.00 MHz

#VBW 300 KHz

SWP 100 msec

hp

MKR -24.23 MHz

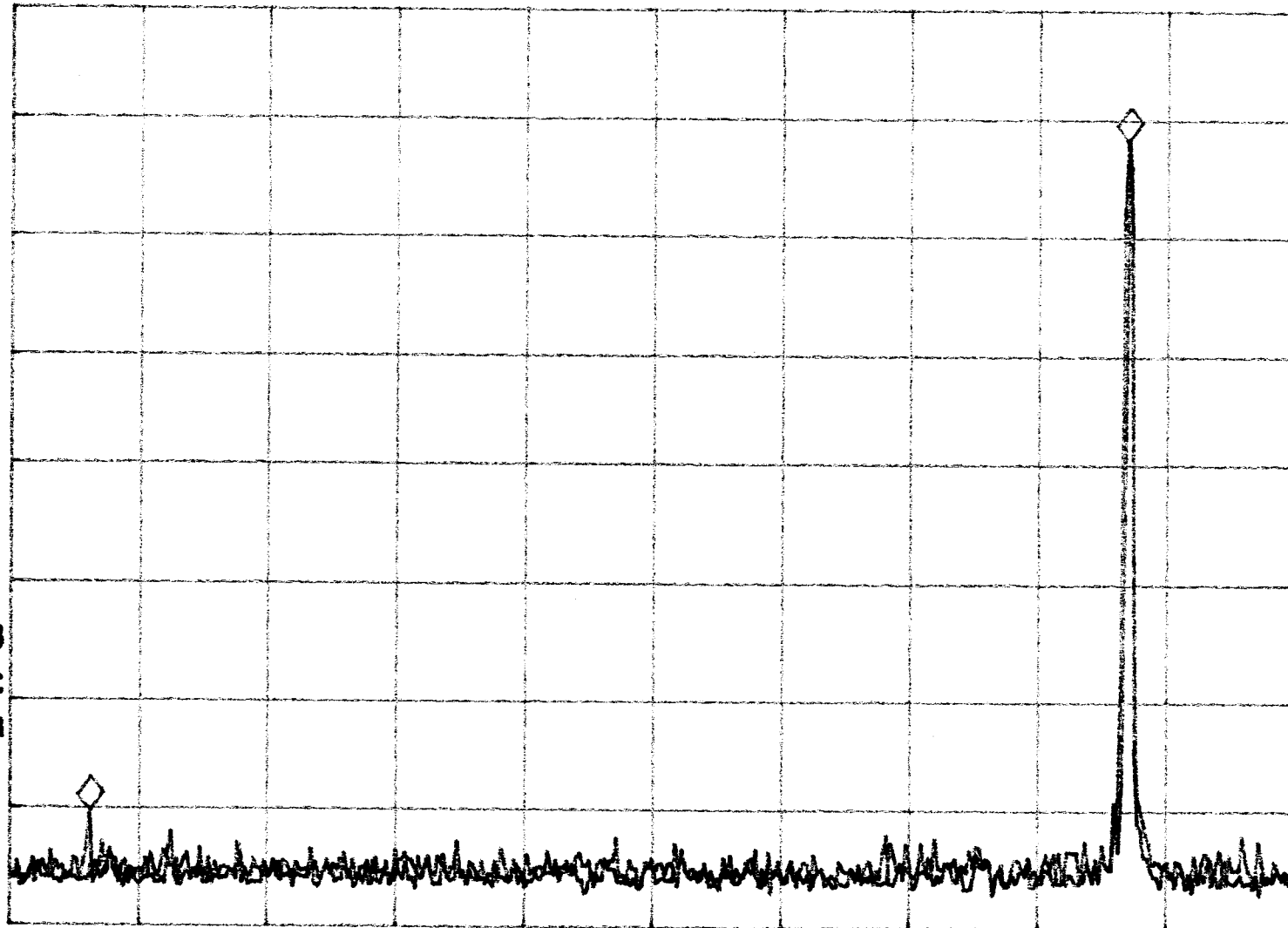
REF 97.0 dB $\mu$ V

AT 10 dB

-58.41 dB

PEAK  
LOG  
10  
dB/

VA VB  
SC FC  
CORR



START 900.00 MHz

#RES BW 30 kHz

STOP 930.00 MHz

#VBW 300 kHz

SWP 100 msec