

EUT with rear cover removed, component side of LED board and solder side of main RF board.

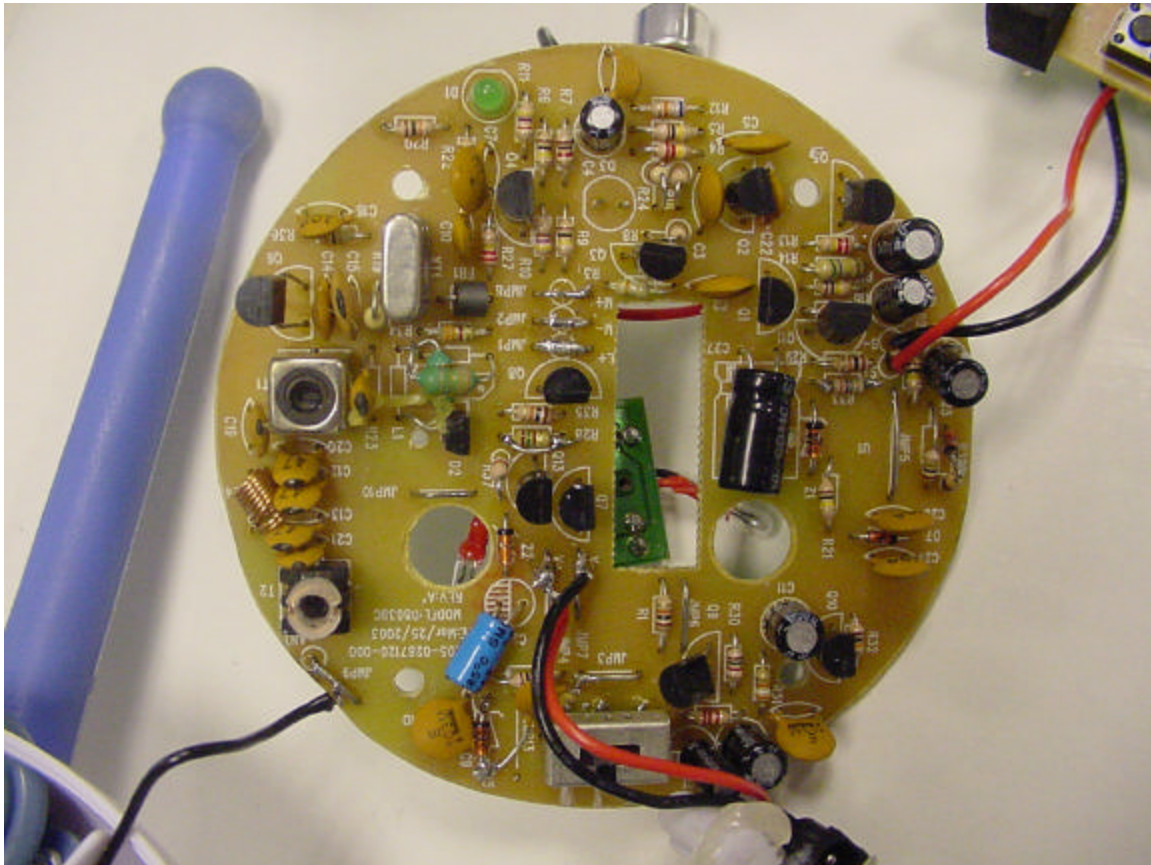
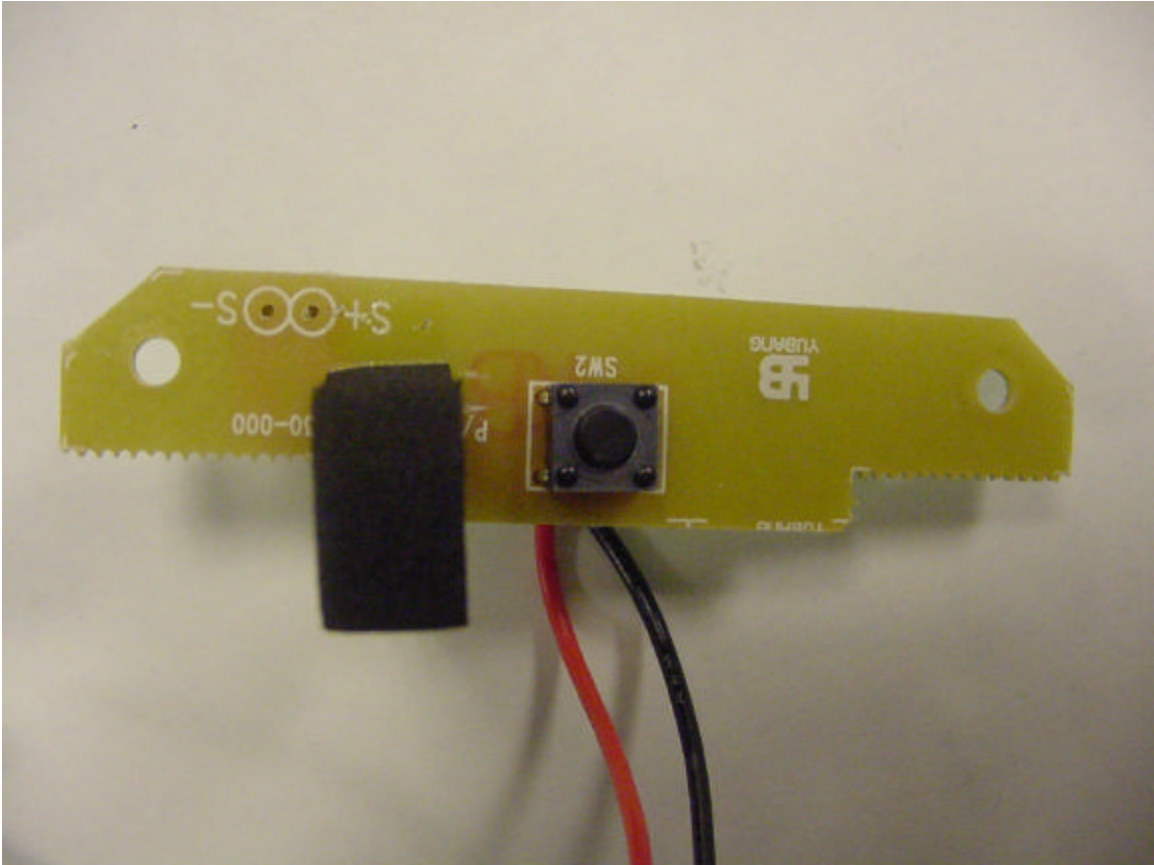
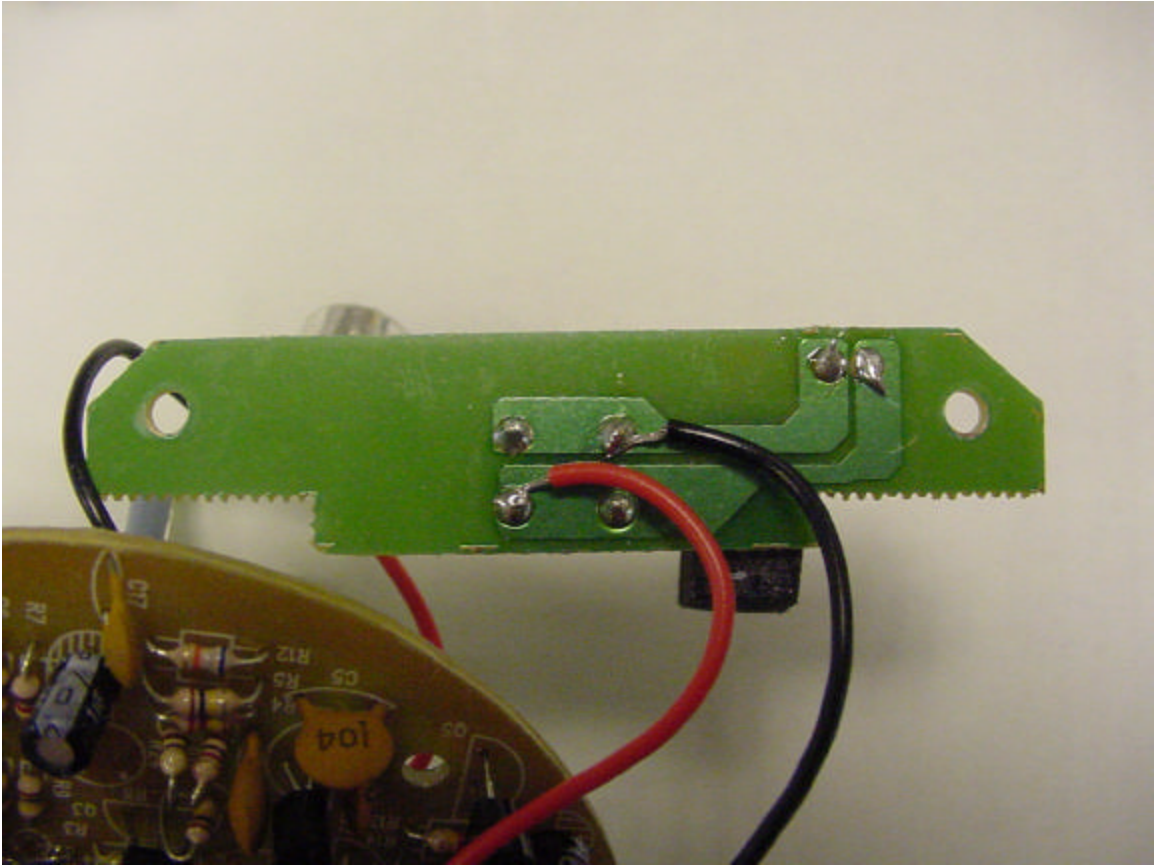


Photo showing component side of main board, also shows permanently attached, soldered on antenna lead, bottom left of main board.

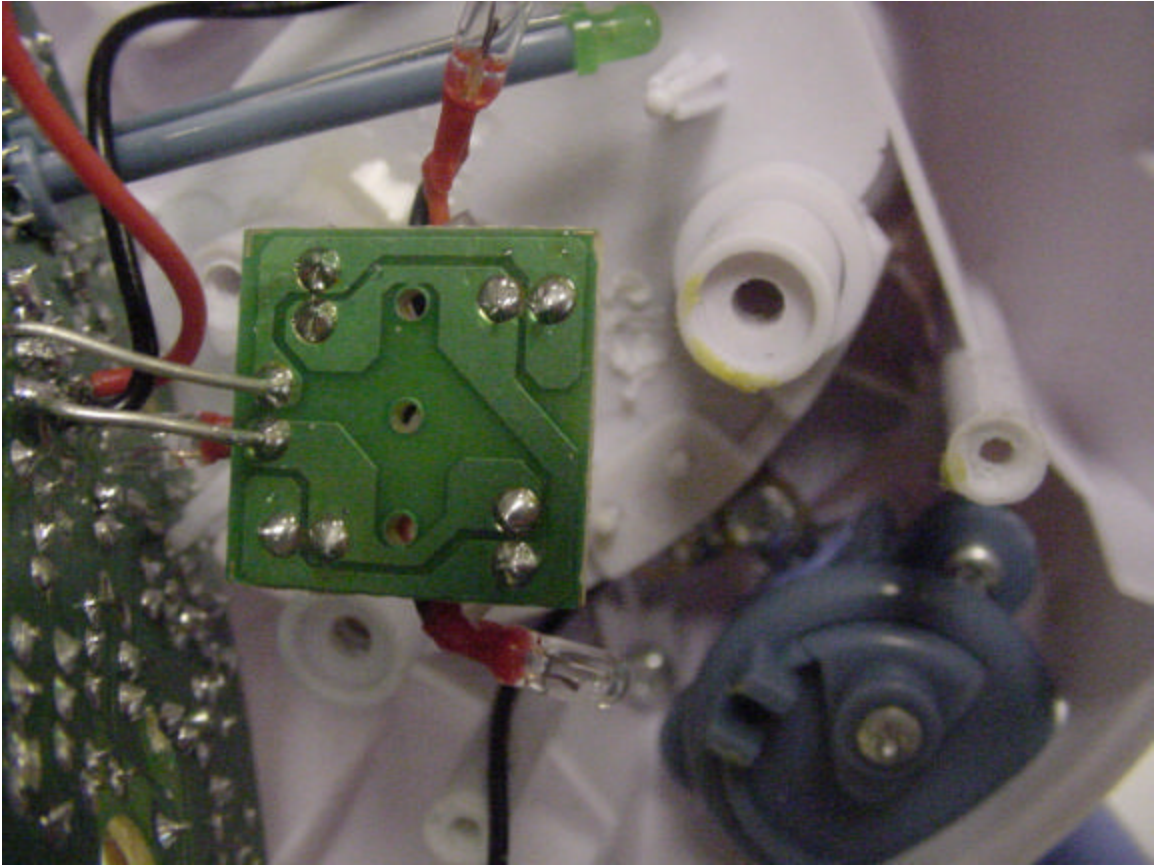


Component side of night light switch board.

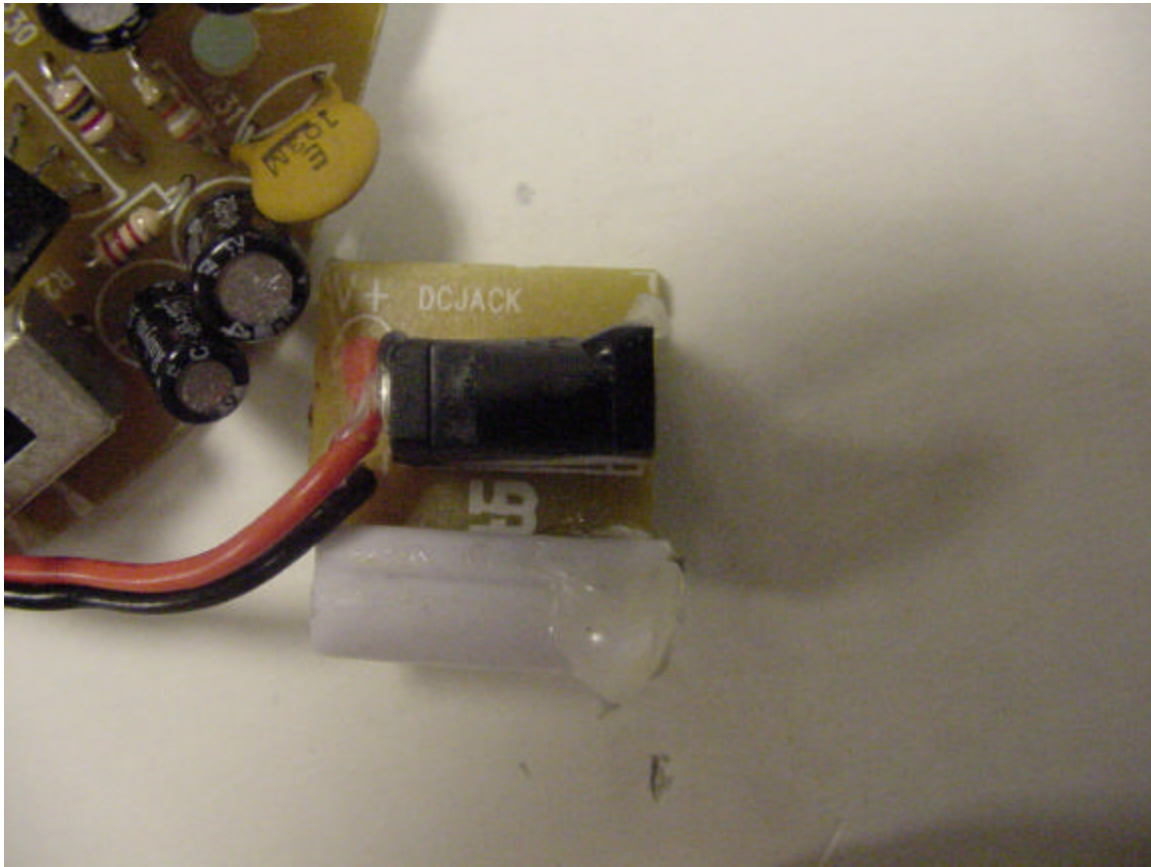


Solder side of night light switch board.

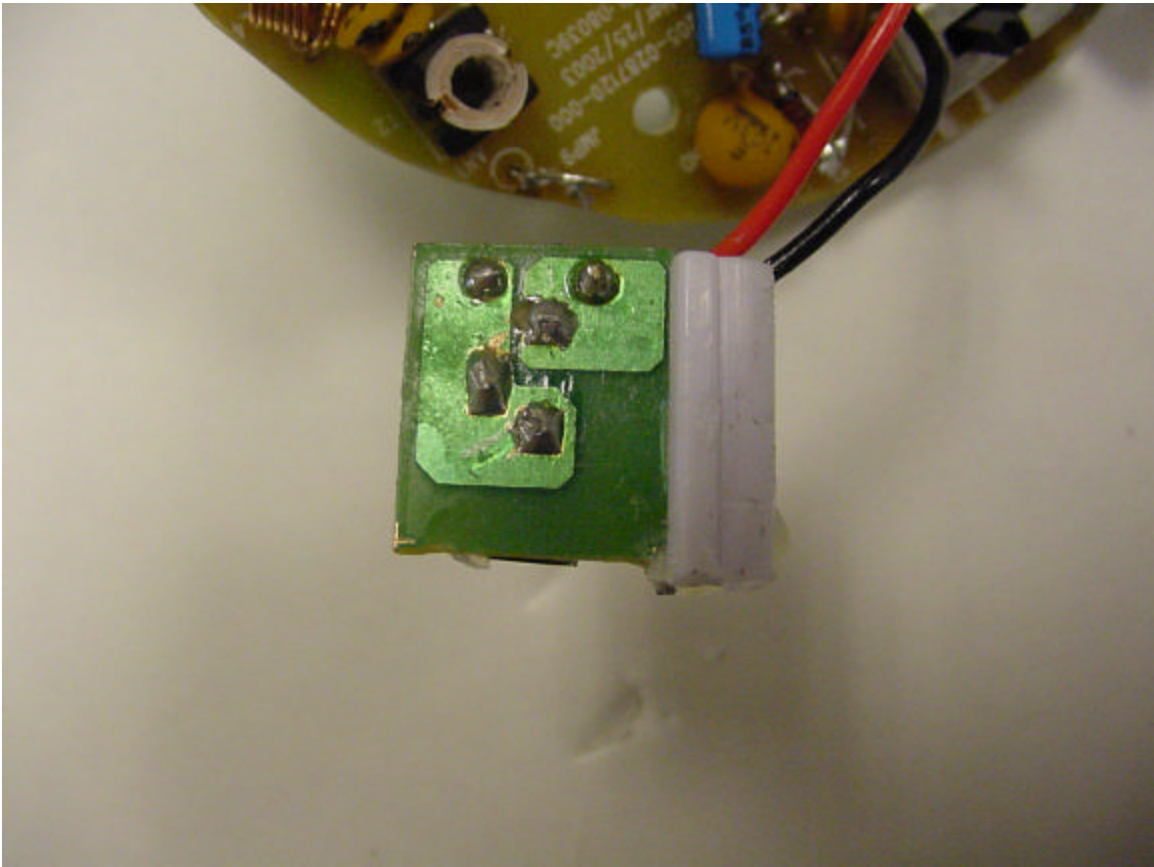




Solder side of night light switch board (component side can be seen in photo 1).



Component side of dc input board.



Solder side of dc input board.