

EUT with rear cover removed, component side of LED/power input board and Solder Side of Main RF board.

Also shows permanently attached, soldered on antenna lead, bottom left of main board.

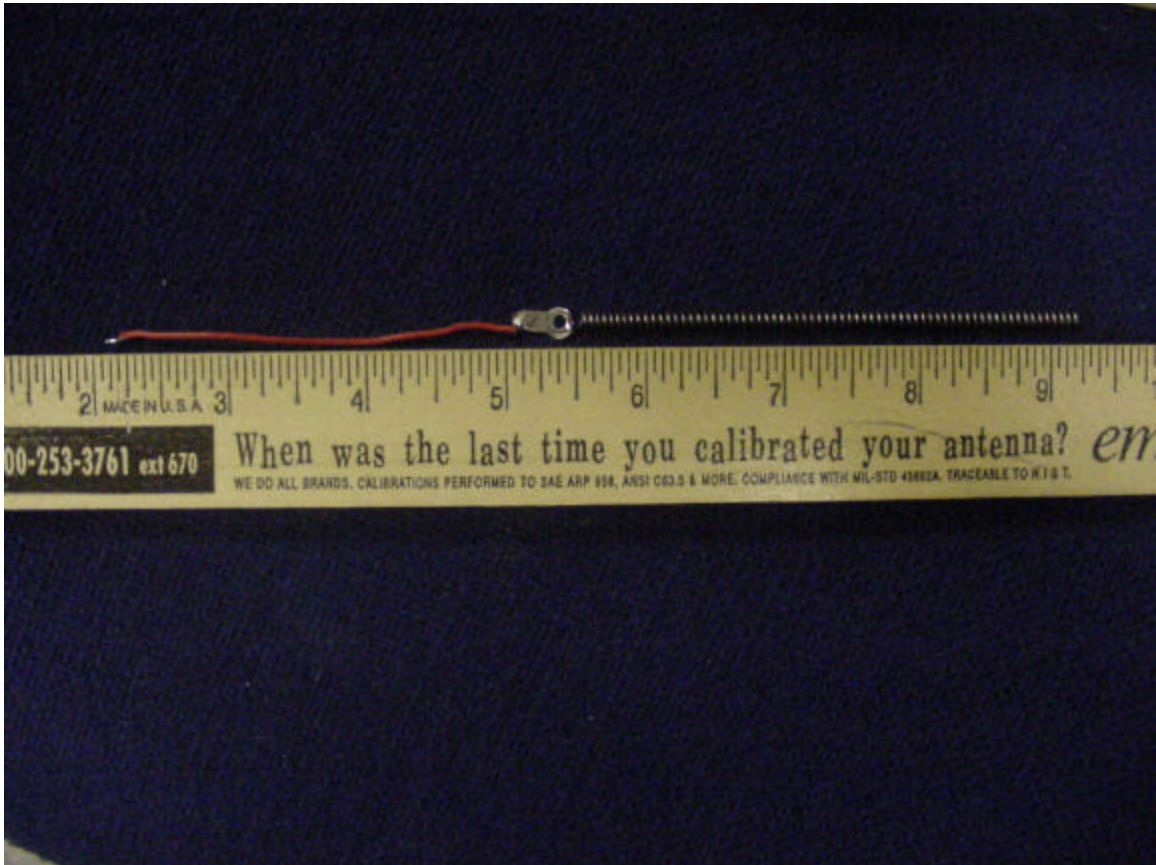
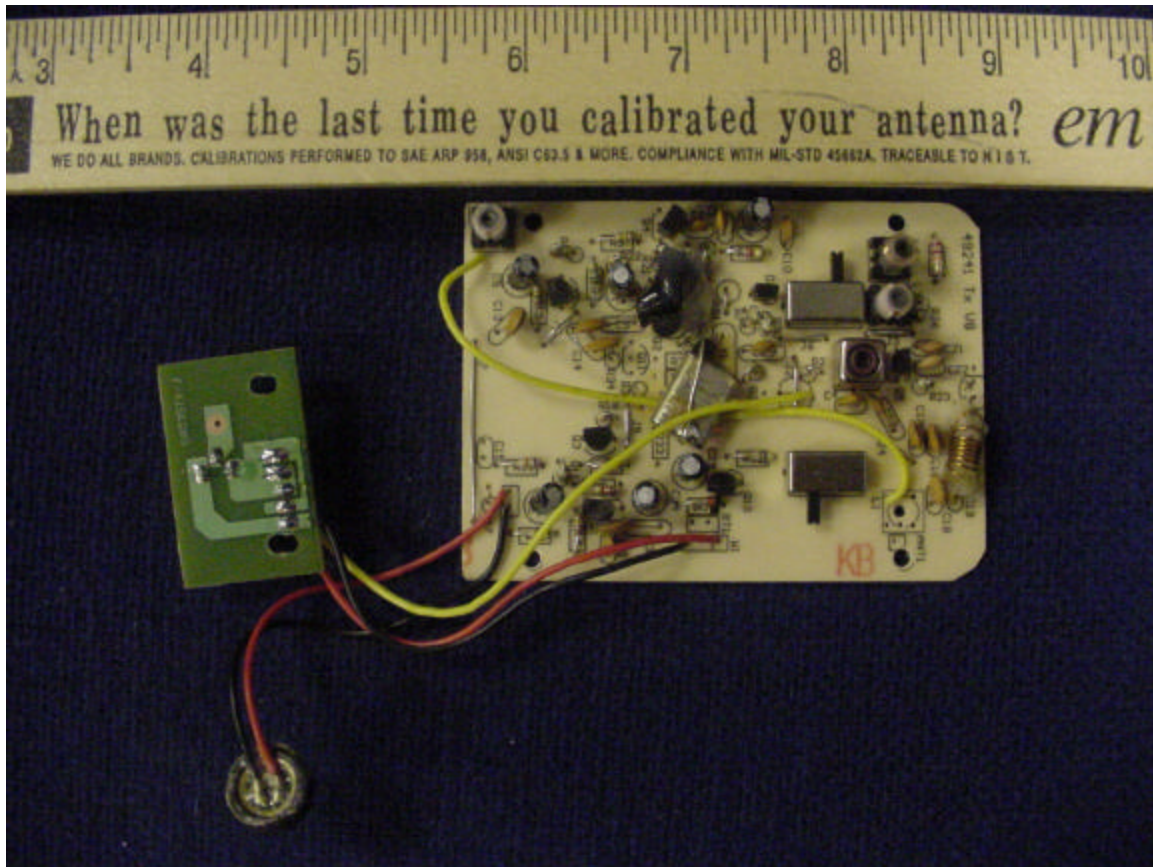
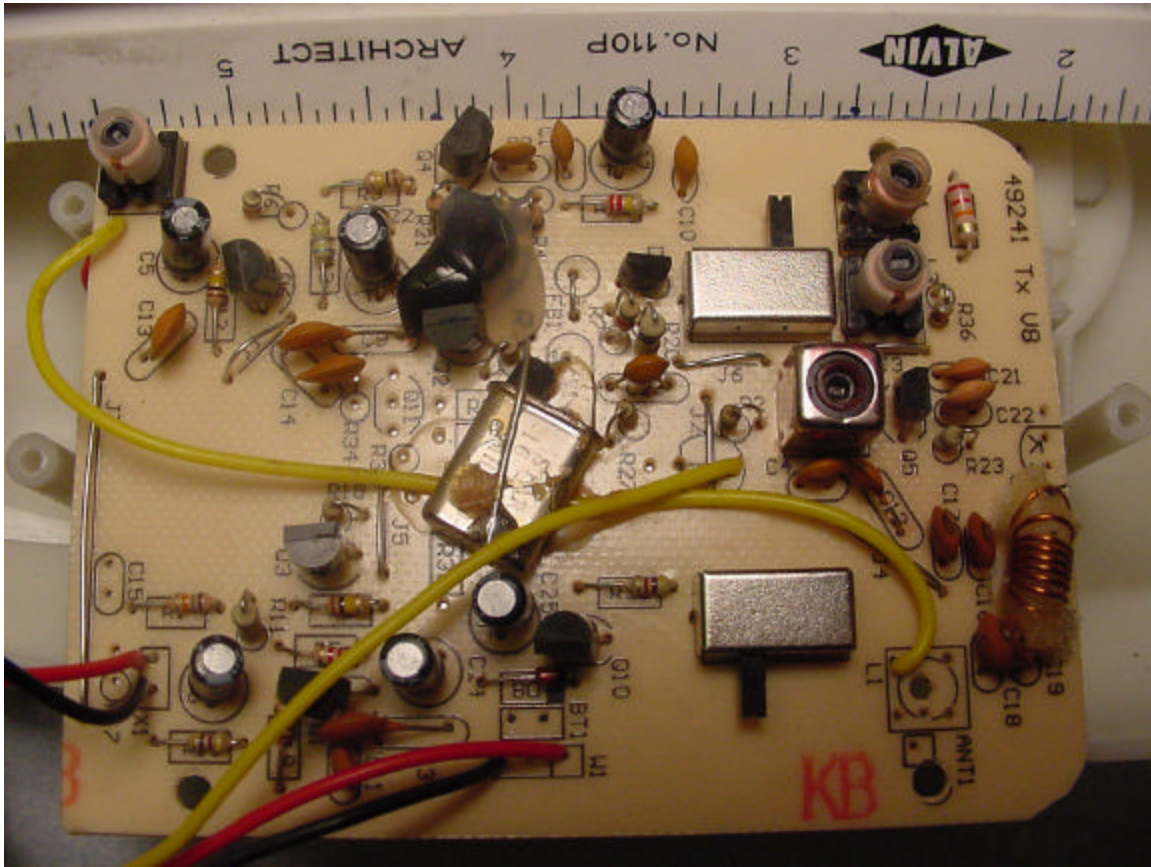


Photo showing removed antenna, and antenna length.

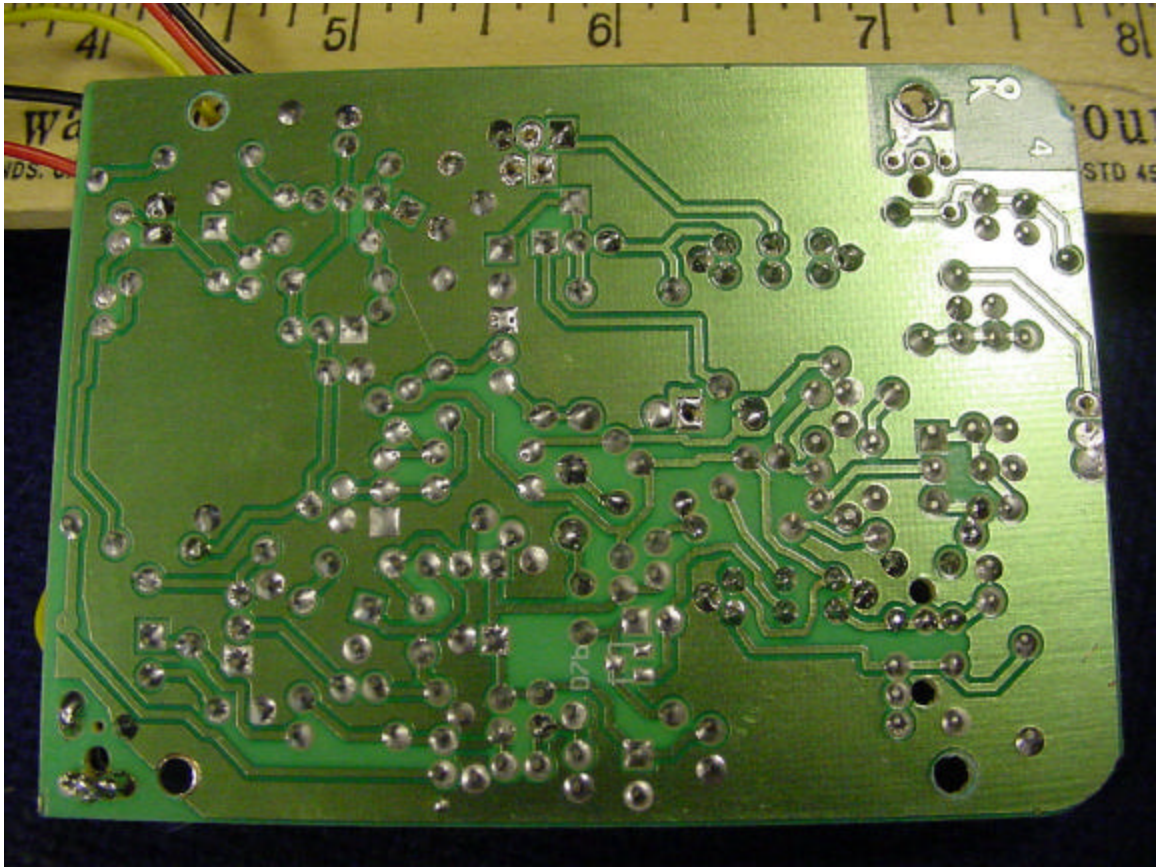


Component Side of main board with associated wiring, power input board and microphone.

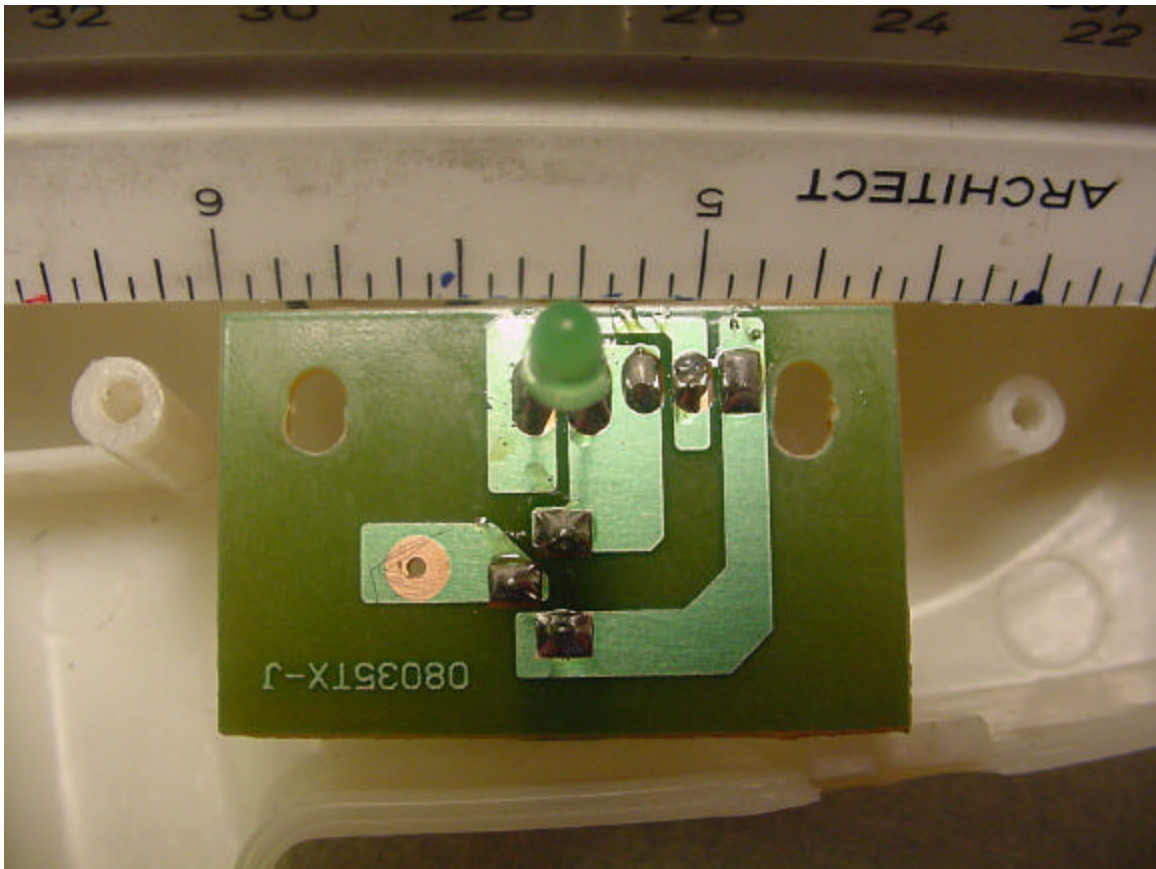




Close up of Main/RF board Component Side.



Close up of Main/RF board Solder Side.



Close up of LED/power input board solder side.