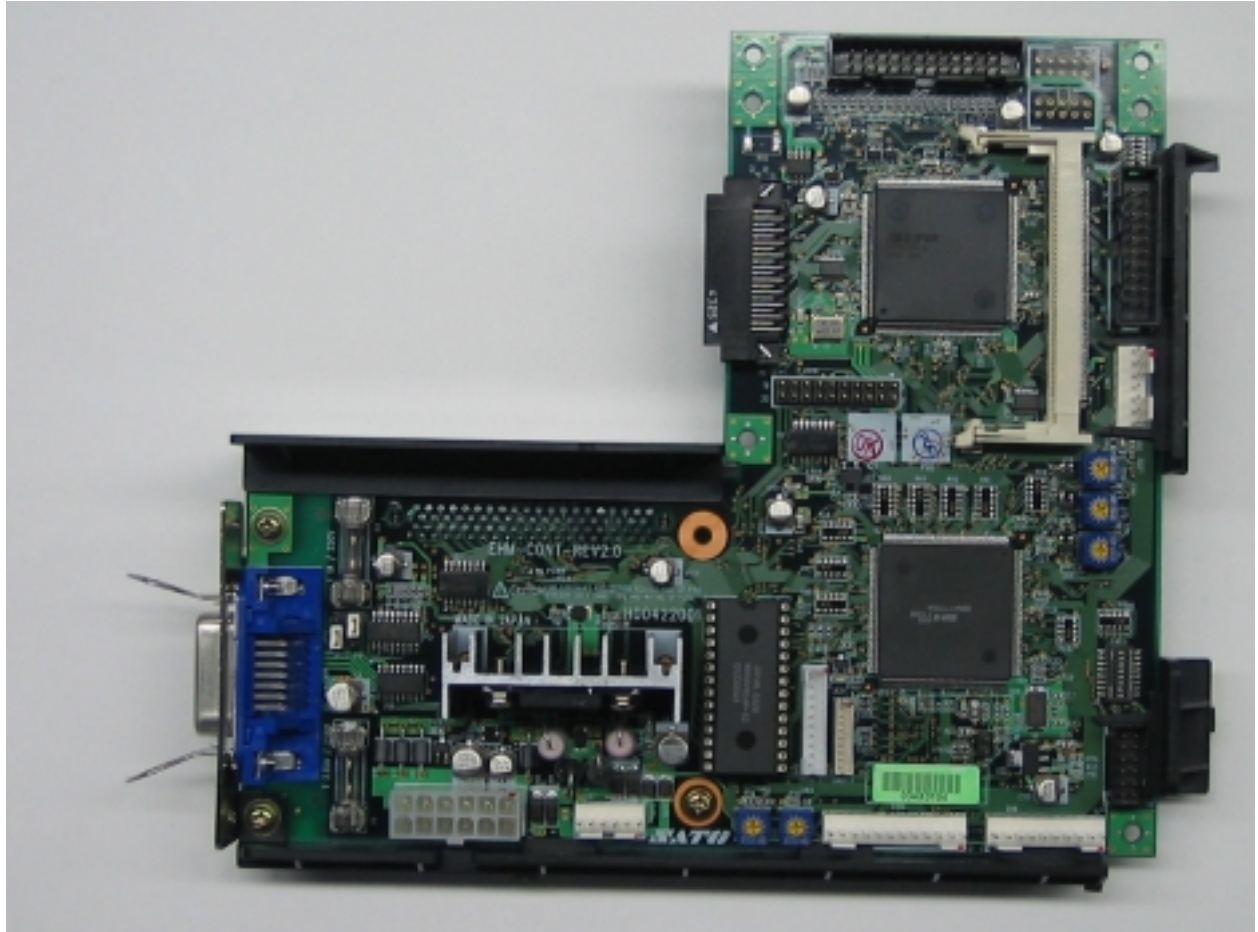


Company: SATO CORPORATION

Product: CL408e, CL412e

FCC ID#: MMFCL4XXEAW

Photo Description: **Front of the CONT Board (MAIN Board)**

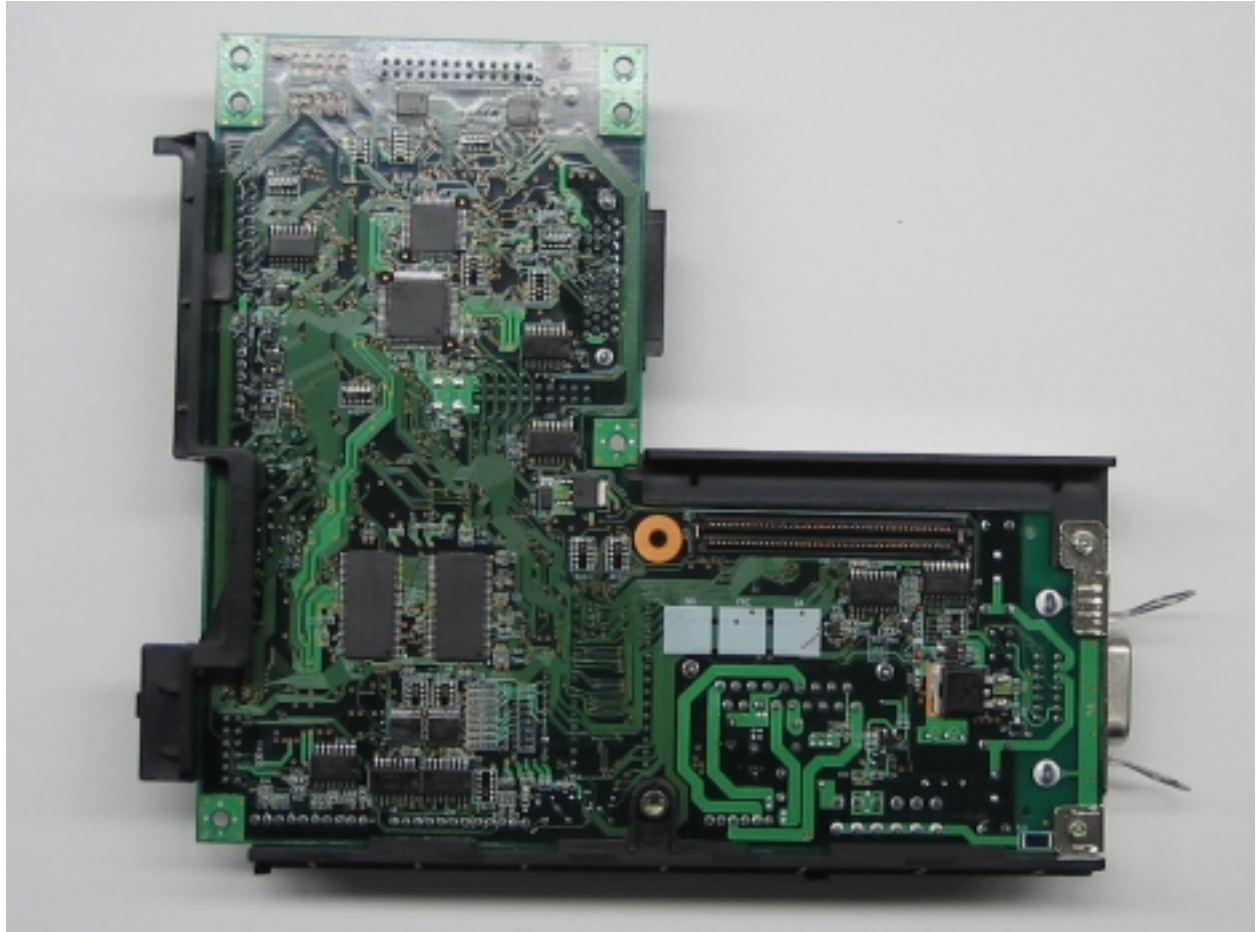


Company: SATO CORPORATION

Product: CL408e, CL412e

FCC ID#: MMFCL4XXEAW

Photo Description: **Back of the CONT Board (MAIN Board)**

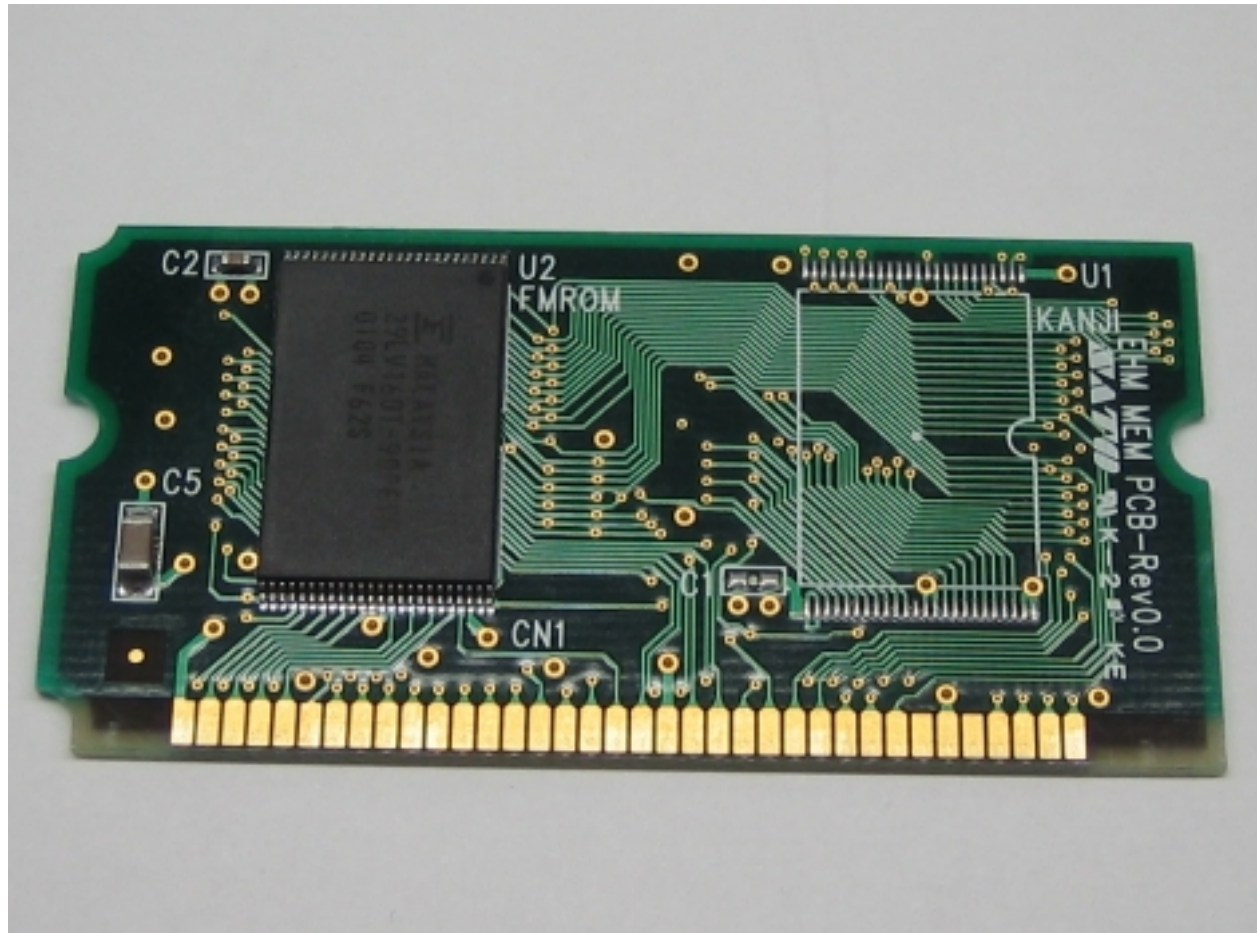


Company: SATO CORPORATION

Product: CL408e, CL412e

FCC ID#: MMFCL4XXEAW

Photo Description: **Front of the MEMORY Board**



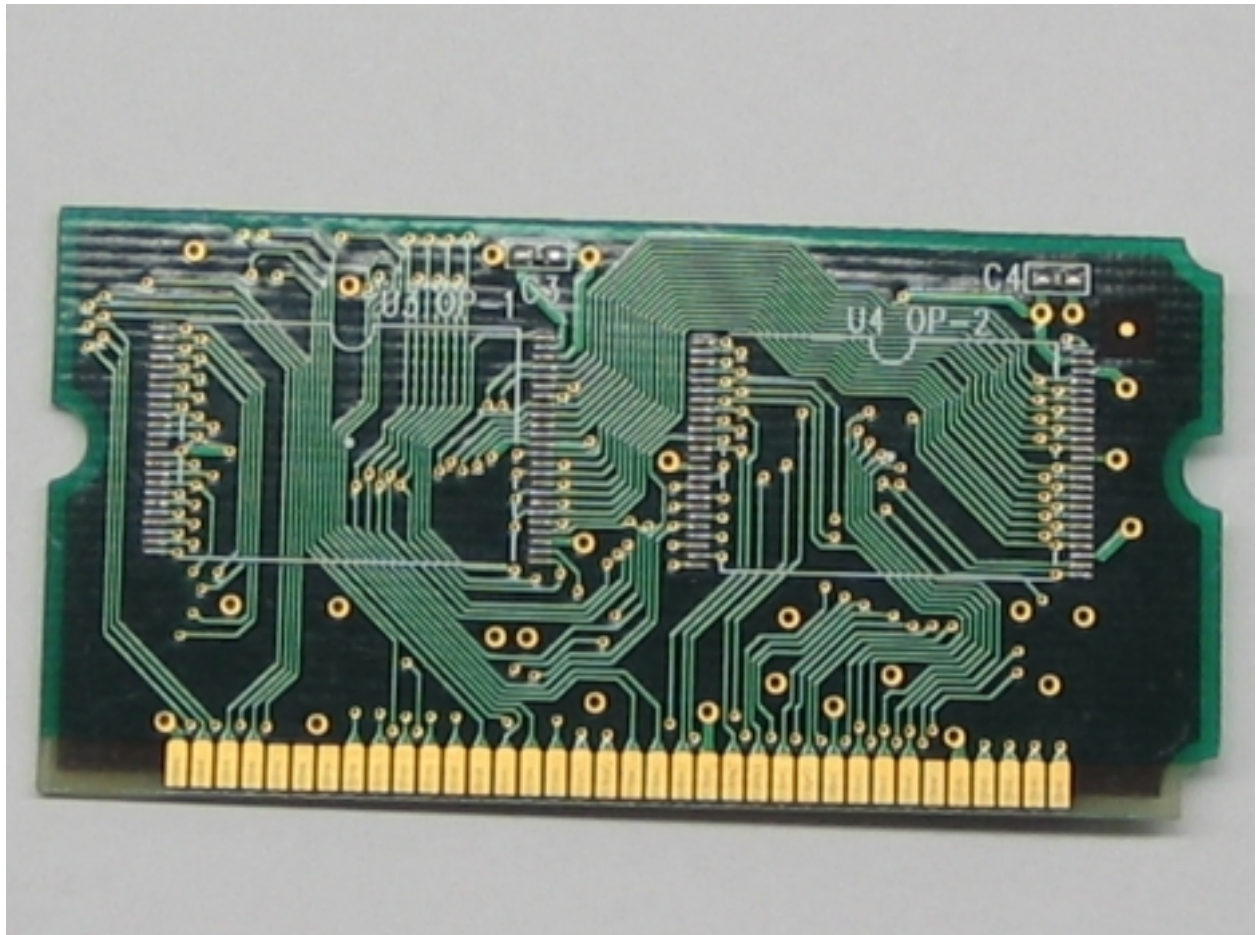


Company: SATO CORPORATION

Product: CL408e, CL412e

FCC ID#: MMFCL4XXEAW

Photo Description: **Back of the MEMORY Board**

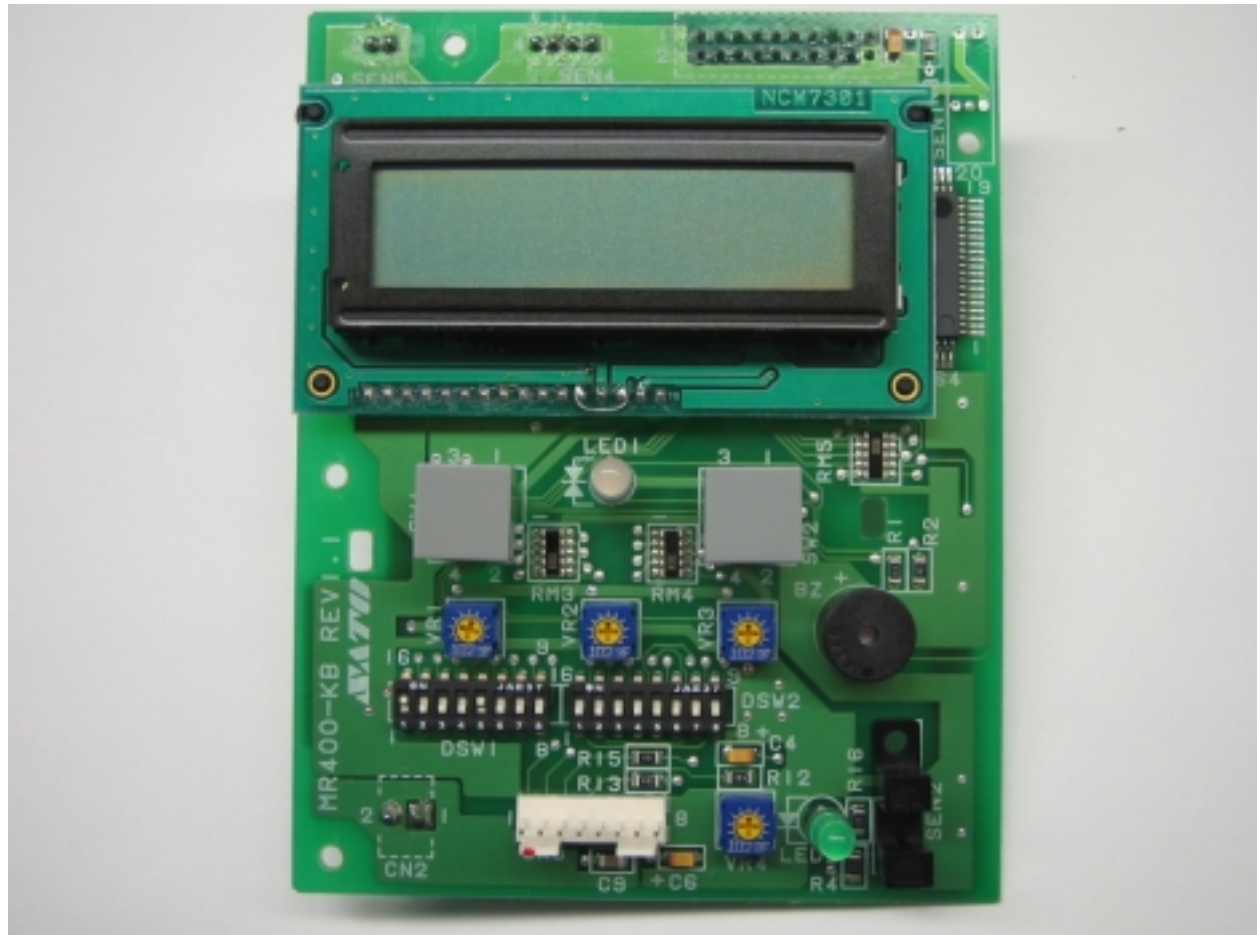


Company: SATO CORPORATION

Product: CL408e, CL412e

FCC ID#: MMFCL4XXEAW

Photo Description: **Front of the KB Board (Key switch & Display Board)**

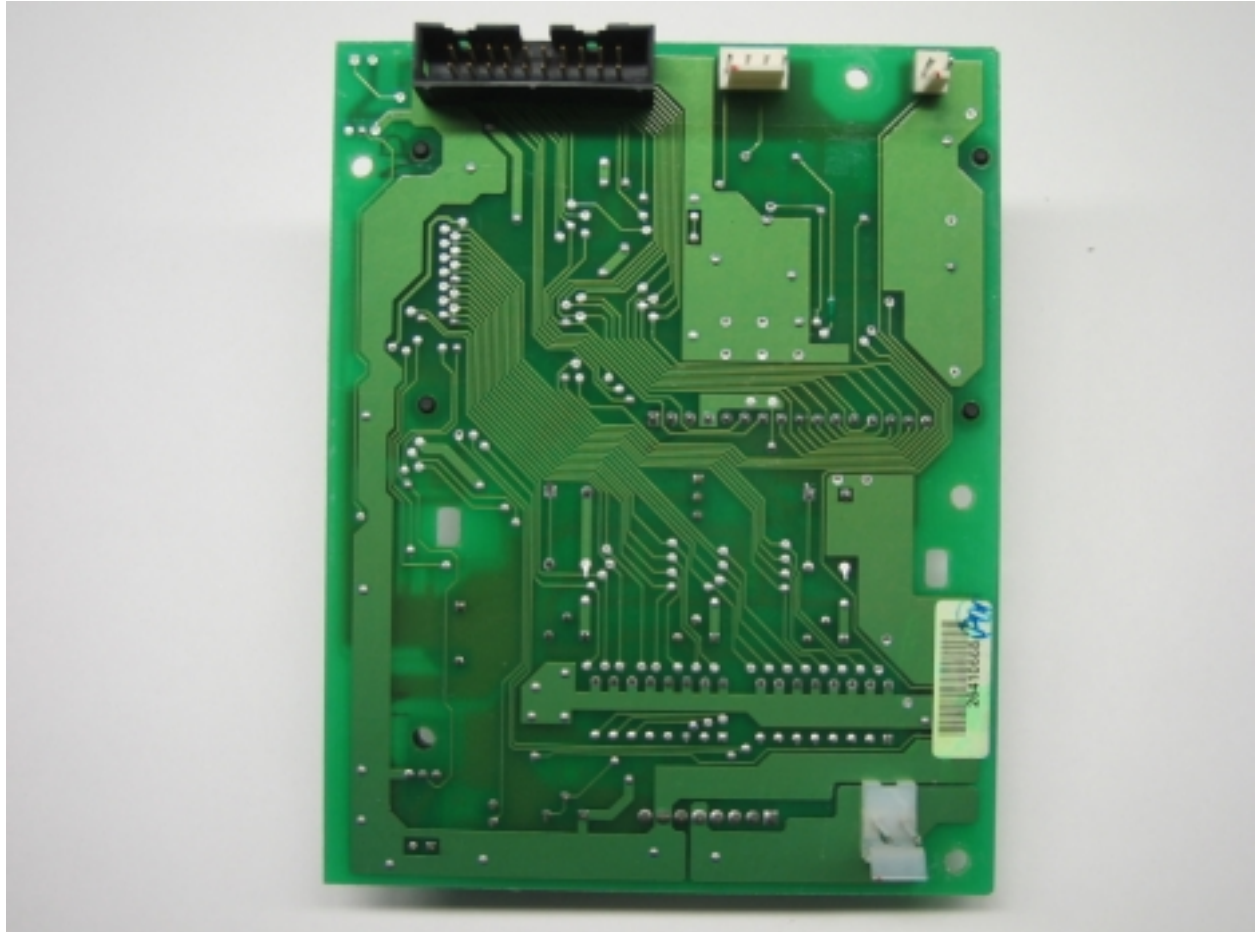


Company: SATO CORPORATION

Product: CL408e, CL412e

FCC ID#: MMFCL4XXEAW

Photo Description: **Back of the KB Board (Key switch & Display Board)**

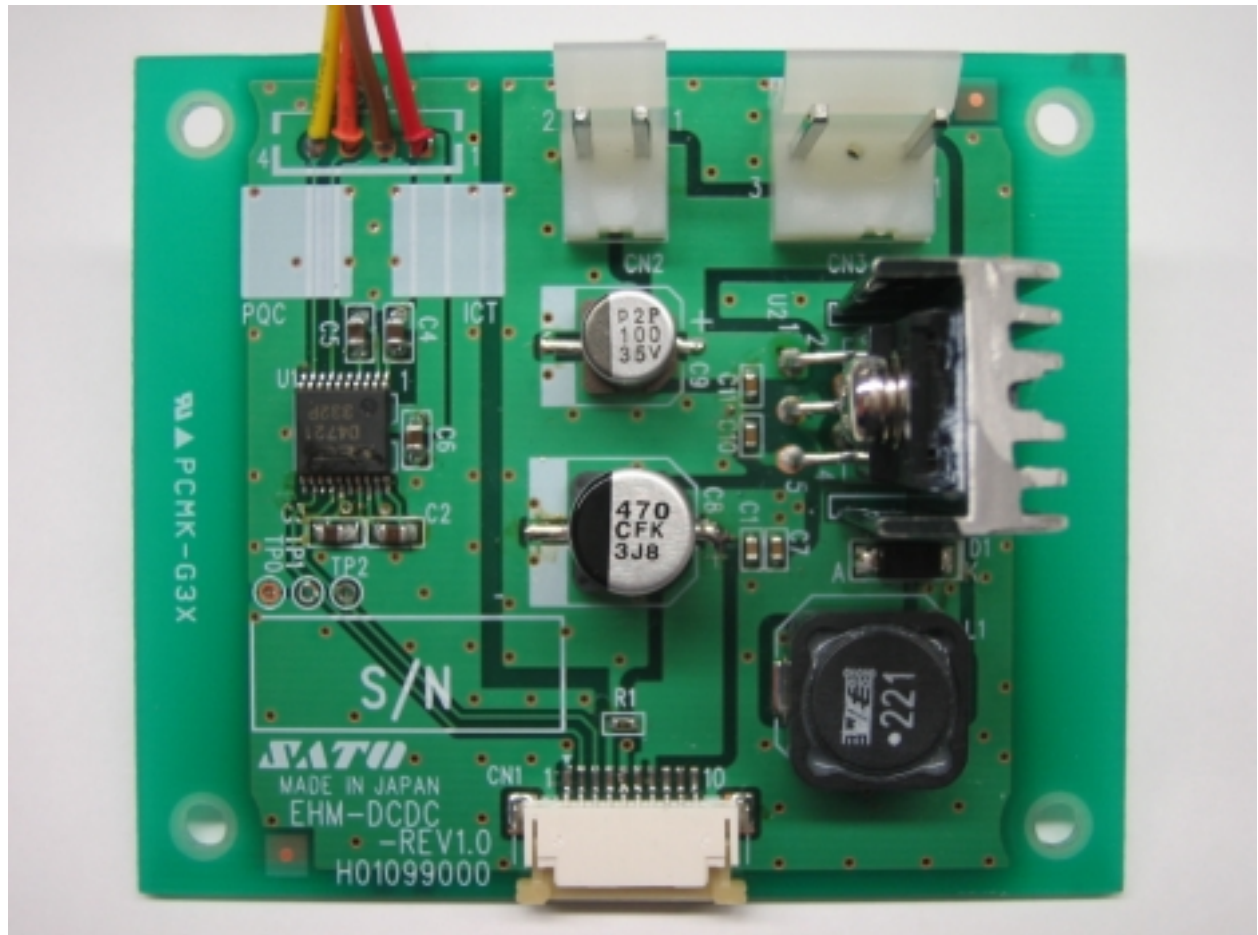


Company: SATO CORPORATION

Product: CL408e, CL412e

FCC ID#: MMFCL4XXEAW

Photo Description: **Front of the DCDC Board (Reader power supply)**



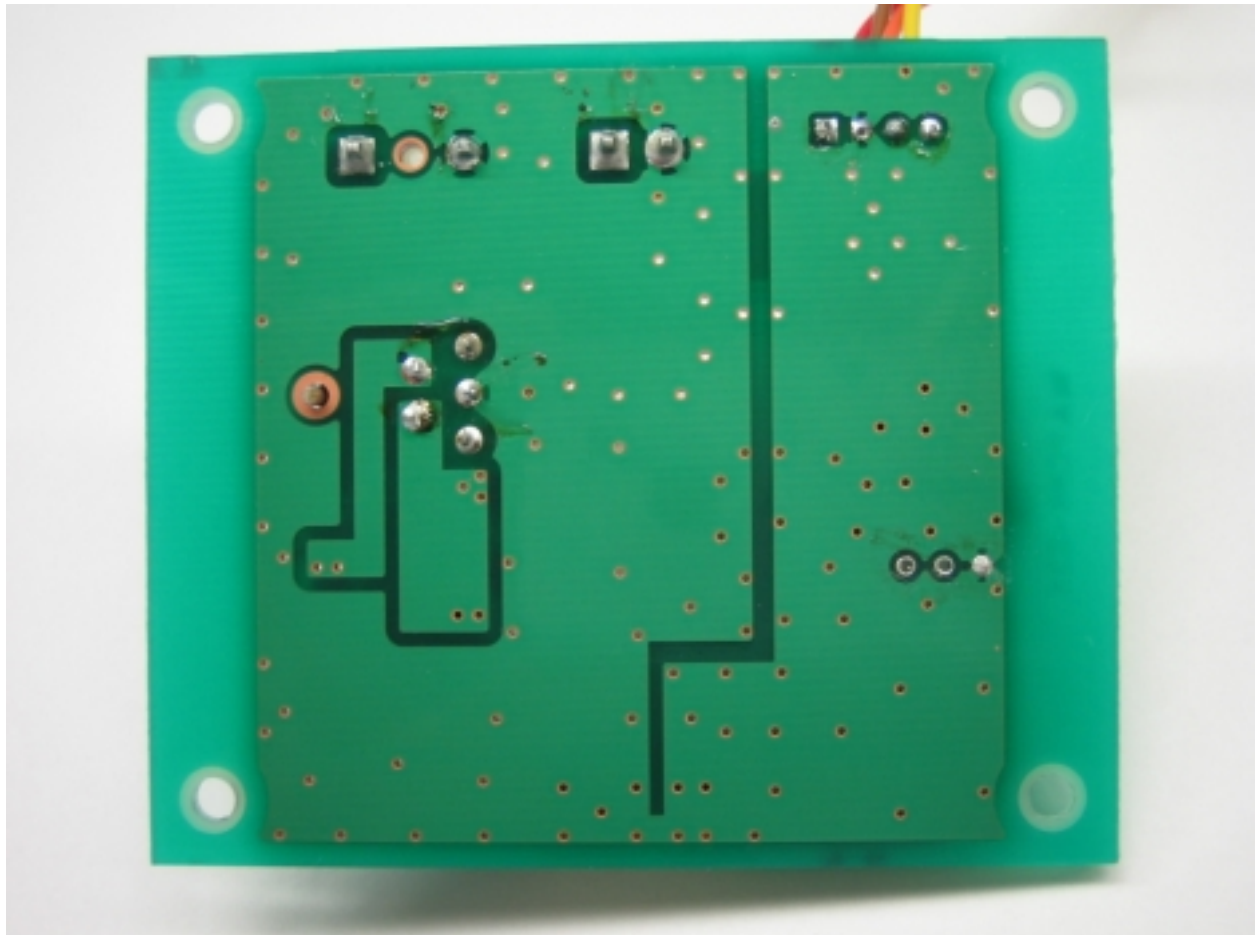


Company: SATO CORPORATION

Product: CL408e, CL412e

FCC ID#: MMFCL4XXEAW

Photo Description: **Back of the DCDC Board (Reader power supply)**





Company: SATO CORPORATION

Product: CL408e, CL412e

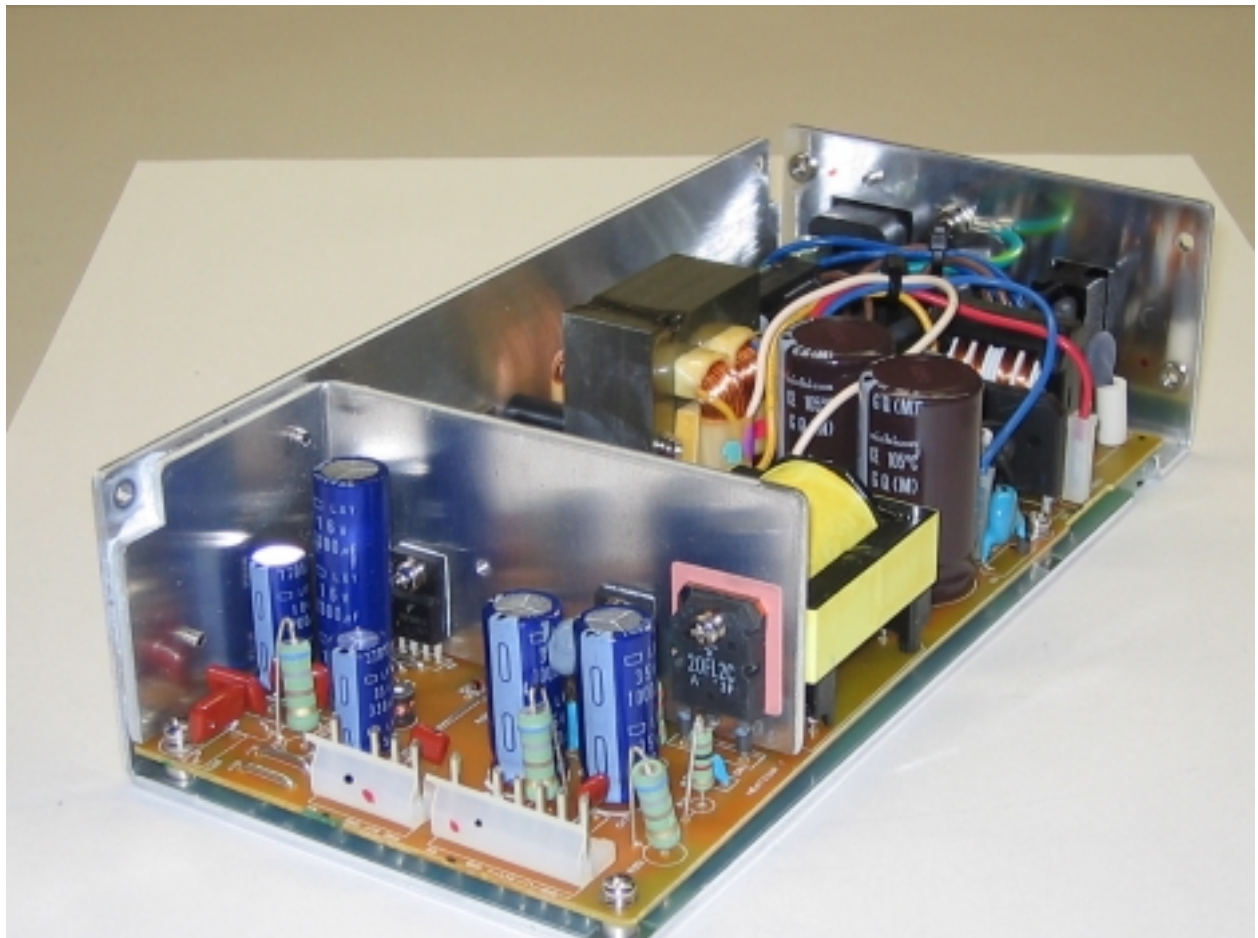
FCC ID#: MMFCL4XXEAW

Photo Description: **Front, left side and top of the main power supply**

This is OEM parts.

MAKER: DENSEI-LAMBDA k.k.

MODEL: STD-260



Company: SATO CORPORATION

Product: CL408e, CL412e

FCC ID#: MMFCL4XXEAW

Photo Description: **Back, right side and bottom of the main power supply**

This is OEM parts.

MAKER: DENSEI-LAMBDA k.k.

MODEL: STD-260

