



## FCC TEST REPORT

### 47 CFR FCC Part 15 Subpart B

Report Reference No.: TRE13060006 R/C:66072

FCC ID: MMAXTC280A

Compiled by

(position+printed name+signature): File administrators Eric Zhang

*Eric Zhang*

Supervised by

(position+printed name+signature): Test Engineer Yuchao Wang

*yuchao.wang*

Approved by

(position+printed name+signature): Manager Wenliang Li

*Wenliang Li*

Date of issue: Jun 18, 2013

Testing Laboratory Name: Shenzhen Huatongwei International Inspection Co., Ltd

Address: Keji Nan No.12 Road, Hi-tech Park, Shenzhen, China

Applicant's name: Midland Radio Corporation

Address: 5900 Parretta Drive, Kansas City, MO, 64120, USA

#### Test specification:

Standard: 47 CFR FCC Part 15 Subpart B - Unintentional Radiators  
ANSI C63.4: 2009

TRF Originator: Shenzhen Huatongwei International Inspection CO., Ltd

Master TRF: Dated 2006-06

**Shenzhen Huatongwei International Inspection Co., Ltd. All rights reserved.**

This publication may be reproduced in whole or in part for non-commercial purposes as long as the Shenzhen Huatongwei International Inspection Co., Ltd is acknowledged as copyright owner and source of the material. Shenzhen Huatongwei International Inspection Co., Ltd takes no responsibility for and will not assume liability for damages resulting from the reader's interpretation of the reproduced material due to its placement and context.

Test item description: HD Action Camera

Trade Mark: 

Manufacturer: Wicom Electronic Co., Ltd.

Model/Type reference: XTC280

Listed Models: XTC285

Ratings: DC3.7V Supplied by the Battery or  
DC5.0V Supplied by the PC

Result: Positive

**TEST REPORT**

<b>Test Report No. :</b> TRE13060006	Jun 18, 2013 Date of issue
--------------------------------------	-------------------------------

Equipment under Test : HD Action Camera

Model /Type : XTC280

Listed Models : XTC285

**Applicant** : **Midland Radio Corporation**

Address : 5900 Parretta Drive, Kansas City, MO, 64120, USA

**Manufacturer** **Wicom Electronic Co., Ltd**

Address : 4-6/F., Building A2, Penghongxin Industrial Park, Zhoushi Road, Huangmabu Community, Xixiang, Bao'an District, Shenzhen, China

<b>Test Result</b> according to the standards on page 4:	<b>Positive</b>
--	-----------------

The test report merely corresponds to the test sample.

It is not permitted to copy extracts of these test result without the written permission of the test laboratory.

## Contents

<b><u>1.</u></b>	<b><u>TEST STANDARDS .....</u></b>	<b><u>4</u></b>
<b><u>2.</u></b>	<b><u>SUMMARY .....</u></b>	<b><u>5</u></b>
2.1.	General Remarks	5
2.2.	Equipment Under Test	5
2.3.	Short description of the Equipment under Test (EUT)	5
2.4.	EUT operation mode	5
2.5.	Modifications	5
2.6.	Configuration of Tested System	5
2.7.	NOTE	6
<b><u>3.</u></b>	<b><u>TEST ENVIRONMENT .....</u></b>	<b><u>7</u></b>
3.1.	Address of the test laboratory	7
3.2.	Test Facility	7
3.3.	Environmental conditions	8
3.4.	Statement of the measurement uncertainty	8
3.5.	Equipments Used during the Test	9
<b><u>4.</u></b>	<b><u>TEST CONDITIONS AND RESULTS .....</u></b>	<b><u>10</u></b>
4.1.	Conducted Emissions Test	10
4.2.	Radiated Emission Test	13
<b><u>5.</u></b>	<b><u>EXTERNAL AND INTERNAL PHOTOS OF THE EUT .....</u></b>	<b><u>21</u></b>

## **1. TEST STANDARDS**

The tests were performed according to following standards:

[47 CFR FCC Part 15 Subpart B](#) - Unintentional Radiators

[ANSI C63.4: 2009](#) – American National Standard for Methods of Measurement of Radio-Noise Emissions from Low-Voltage Electrical and Electronic Equipment in the Range of 9 kHz to 40GHz

## 2. SUMMARY

### 2.1. General Remarks

Date of receipt of test sample	:	Jun 2, 2013
Testing commenced on	:	Jun 5, 2013
Testing concluded on	:	Jun 18, 2013

### 2.2. Equipment Under Test

The **Midland Radio Corporation's** Model: XTC280 or the "EUT" as referred to in this report; more general information as follows, for more details, refer to the user's manual of the EUT.

#### Power supply system utilised

Power supply voltage	:	<input type="radio"/> 120V / 60 Hz	<input type="radio"/> 115V / 60Hz
		<input type="radio"/> 12 V DC	<input type="radio"/> 24 V DC
		<input checked="" type="radio"/> Other (specified in blank below)	

DC3.7V Supplied by the Battery or DC 5.0V Supplied by the PC

### 2.3. Short description of the Equipment under Test (EUT)

The EUT( (M/N: XTC280)) is HD Action Camera with the function of capturing scene and storing it in a TF card.

The structure of M/N: XTC285 is all the same as M/N: XTC280 except for body color.

For more details, refer to the user's manual of the EUT.

Serial number: Prototype

### 2.4. EUT operation mode

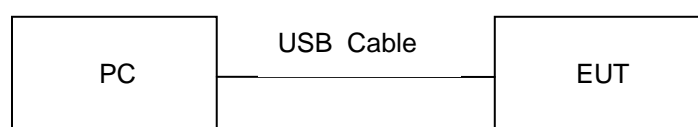
The EUT has been tested under typical operating condition recording mode 、charging mode and USB data transfer mode.

### 2.5. Modifications

No modifications were implemented to meet testing criteria.

### 2.6. Configuration of Tested System

#### Configuration of Tested System



## Equipment Used in Tested System

No.	Product	Manufacturer	Serial No.	FCC ID
1	PC	DELL	E520	-----
2	Displayer	PHILIPS	19PFL3120/T3	-----

**USB Line:**

Cable Length: 120cm

◇ Shielded ◆ Unshielded

**2.7. NOTE**

The EUT is a HD Action Camera, The functions of the EUT listed as below:

	Test Standards	Reference Report
EMC REPORT	FCC PART 15 Subpart B	TRE13060006

### **3. TEST ENVIRONMENT**

#### **3.1. Address of the test laboratory**

Shenzhen Huatongwei International Inspection Co., Ltd  
Keji Nan No.12 Road, Hi-tech Park, Shenzhen, China  
Phone: 86-755-26715686 Fax: 86-755-26748089

The sites are constructed in conformance with the requirements of ANSI C63.7, ANSI C63.4 (2009) and CISPR Publication 22.

#### **3.2. Test Facility**

The test facility is recognized, certified, or accredited by the following organizations:

##### **CNAS-Lab Code: L1225**

Shenzhen Huatongwei International Inspection Co., Ltd. has been assessed and proved to be in compliance with CNAS-CL01 Accreditation Criteria for Testing and Calibration Laboratories (identical to ISO/IEC 17025: 2005 General Requirements) for the Competence of Testing and Calibration Laboratories, Date of Registration: Mar. 01, 2012. Valid time is until Feb 28, 2015.

##### **A2LA-Lab Cert. No. 2243.01**

Shenzhen Huatongwei International Inspection Co., Ltd. EMC Laboratory has been accredited by A2LA for technical competence in the field of electrical testing, and proved to be in compliance with ISO/IEC 17025: 2005 General Requirements for the Competence of Testing and Calibration Laboratories and any additional program requirements in the identified field of testing. Valid time is until Sept. 30, 2013.

##### **FCC-Registration No.: 662850**

Shenzhen Huatongwei International Inspection Co., Ltd. EMC Laboratory has been registered and fully described in a report filed with the FCC (Federal Communications Commission). The acceptance letter from the FCC is maintained in our files. Registration 662850, Renewal date Jun. 01, 2012, valid time is until Jun. 01, 2015.

##### **IC-Registration No.: 5377A**

The 3m Alternate Test Site of Shenzhen Huatongwei International Inspection Co., Ltd. has been registered by Certification and Engineering Bureau of Industry Canada for the performance of radiated measurements with Registration No. 5377A on Jan. 25, 2011, valid time is until Jan. 24, 2014.

##### **ACA**

Shenzhen Huatongwei International Inspection Co., Ltd. EMC Laboratory can also perform testing for the Australian C-Tick mark as a result of our A2LA accreditation.

##### **NEMKO-Aut. No.: ELA125**

Shenzhen Huatongwei International Inspection Co., Ltd has been assessed the quality assurance system, the testing facilities, qualifications and testing practices of the relevant parts of the organization. The quality assurance system of the Laboratory has been validated against ISO/IEC 17025 or equivalent. The laboratory also fulfils the conditions described in Nemko Document NLA-10, the authorization is valid through July 07, 2013

##### **VCCI**

The 3m Semi-anechoic chamber (12.2m×7.95m×6.7m) and Shielded Room (8m×4m×3m) of Shenzhen Huatongwei International Inspection Co., Ltd. has been registered in accordance with the Regulations for Voluntary Control Measures with Registration No.: G-292. Date of Registration: Dec. 24, 2010. Valid time is until Dec. 23, 2013.

Main Ports Conducted Interference Measurement of Shenzhen Huatongwei International Inspection Co., Ltd. has been registered in accordance with the Regulations for Voluntary Control Measures with Registration No.: C-2726. Date of Registration: Dec. 20, 2012. Valid time is until Dec. 19, 2015.

Telecommunication Ports Conducted Interference Measurement of Shenzhen Huatongwei International Inspection Co., Ltd. has been registered in accordance with the Regulations for Voluntary Control Measures with Registration No.: T-1837. Date of Registration: May 07, 2010. Valid time is until May 06, 2013.

## DNV

Shenzhen Huatongwei International Inspection Co., Ltd. has been found to comply with the requirements of DNV towards subcontractor of EMC and safety testing services in conjunction with the EMC and Low voltage Directives and in the voluntary field. The acceptance is based on a formal quality Audit and follow-ups according to relevant parts of ISO/IEC Guide 17025 (2005), in accordance with the requirements of the DNV Laboratory Quality Manual towards subcontractors. Valid time is until Aug. 24, 2013.

### 3.3. Environmental conditions

During the measurement the environmental conditions were within the listed ranges:

Temperature:	<u>15-35 ° C</u>
Humidity:	<u>30-60 %</u>
Atmospheric pressure:	<u>950-1050mbar</u>

### 3.4. Statement of the measurement uncertainty

The data and results referenced in this document are true and accurate. The reader is cautioned that there may be errors within the calibration limits of the equipment and facilities. The measurement uncertainty was calculated for all measurements listed in this test report acc. to CISPR 16 - 4 „Specification for radio disturbance and immunity measuring apparatus and methods – Part 4: Uncertainty in EMC Measurements“ and is documented in the Shenzhen Huatongwei International Inspection Co., Ltd quality system acc. to DIN EN ISO/IEC 17025. Furthermore, component and process variability of devices similar to that tested may result in additional deviation. The manufacturer has the sole responsibility of continued compliance of the device.

Hereafter the best measurement capability for Shenzhen Huatongwei laboratory is reported:

Test	Range	Measurement Uncertainty	Notes
Radiated Emission	9K-30MHz	3.22 dB	(1)
Radiated Emission	30~1000MHz	4.24 dB	(1)
Radiated Emission	1~18GHz	5.16 dB	(1)
Radiated Emission	18-40GHz	5.54 dB	(1)
Conducted Disturbance	0.15~30MHz	3.39 dB	(1)

- (1) This uncertainty represents an expanded uncertainty expressed at approximately the 95% confidence level using a coverage factor of k=2.



**3.5. Equipments Used during the Test**

Conducted Emission					
Item	Test Equipment	Manufacturer	Model No.	Serial No.	Last Cal.
1	EMI TEST RECEIVER	Rohde & Schwarz	ESCI	100106	2012/10/27
2	ARTIFICIAL MAINS	Rohde & Schwarz	ESH2-Z5	100028	2012/10/27
3	PULSE LIMITER	Rohde & Schwarz	ESHSZ2	100044	2012/10/27
4	EMI TEST SOFTWARE	Rohde & Schwarz	ES-K1	N/A	2012/10/27

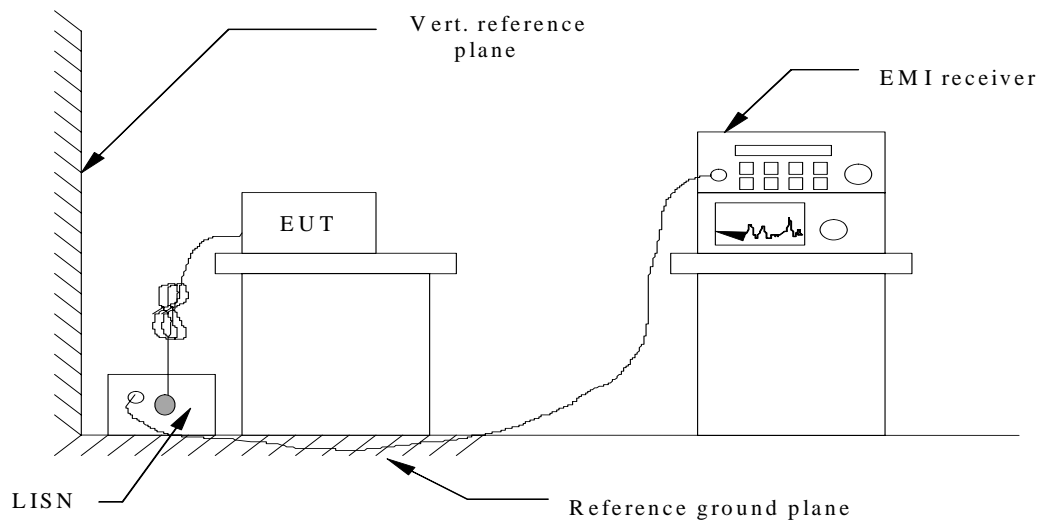
Radiated Emission					
Item	Test Equipment	Manufacturer	Model No.	Serial No.	Last Cal.
1	ULTRA-BROADBAND ANTENNA	Rohde & Schwarz	HL562	100015	2012/10/27
2	EMI TEST RECEIVER	Rohde & Schwarz	ESI 26	100009	2012/10/27
3	RF TEST PANEL	Rohde & Schwarz	TS / RSP	335015/ 0017	2012/10/27
4	TURN TABLE	ETS	2088	2149	2012/10/27
5	ANTENNA MAST	ETS	2075	2346	2012/10/27
6	EMI TEST SOFTWARE	Rohde & Schwarz	ESK1	N/A	2012/10/27
7	HORN ANTENNA	Rohde & Schwarz	HF906	100039	2012/10/27
8	Amplifier	Sonoma	310N	E009-13	2012/10/27
9	JS amplifier	Rohde & Schwarz	JS4-00101800-28-5A	F201504	2012/10/27
10	High pass filter	Compliance Direction systems	BSU-6	34202	2012/10/27
13	Loop Antenna	Rohde&Schwarz	HFH2-Z2	100020	2012/10/27

The calibration interval was one year.

## 4. TEST CONDITIONS AND RESULTS

### 4.1. Conducted Emissions Test

#### TEST CONFIGURATION



#### TEST PROCEDURE

- 1 The equipment was set up as per the test configuration to simulate typical actual usage per the user's manual. The EUT is a tabletop system, a wooden table with a height of 0.8 meters is used and is placed on the ground plane as per ANSI C63.4-2009.
- 2 Support equipment, if needed, was placed as per ANSI C63.4-2009.
- 3 All I/O cables were positioned to simulate typical actual usage as per ANSI C63.4-2009.
- 4 The EUT received AC120V/60Hz power through a Line Impedance Stabilization Network (LISN) which supplied power source and was grounded to the ground plane.
- 5 All support equipments received AC power from a second LISN, if any.
- 6 The EUT test program was started. Emissions were measured on each current carrying line of the EUT using a spectrum Analyzer / Receiver connected to the LISN powering the EUT. The LISN has two monitoring points: Line 1 (Hot Side) and Line 2 (Neutral Side). Two scans were taken: one with Line 1 connected to Analyzer / Receiver and Line 2 connected to a 50 ohm load; the second scan had Line 1 connected to a 50 ohm load and Line 2 connected to the Analyzer / Receiver.
- 7 Analyzer / Receiver scanned from 150 KHz to 30MHz for emissions in each of the test modes.
- 8 During the above scans, the emissions were maximized by cable manipulation.

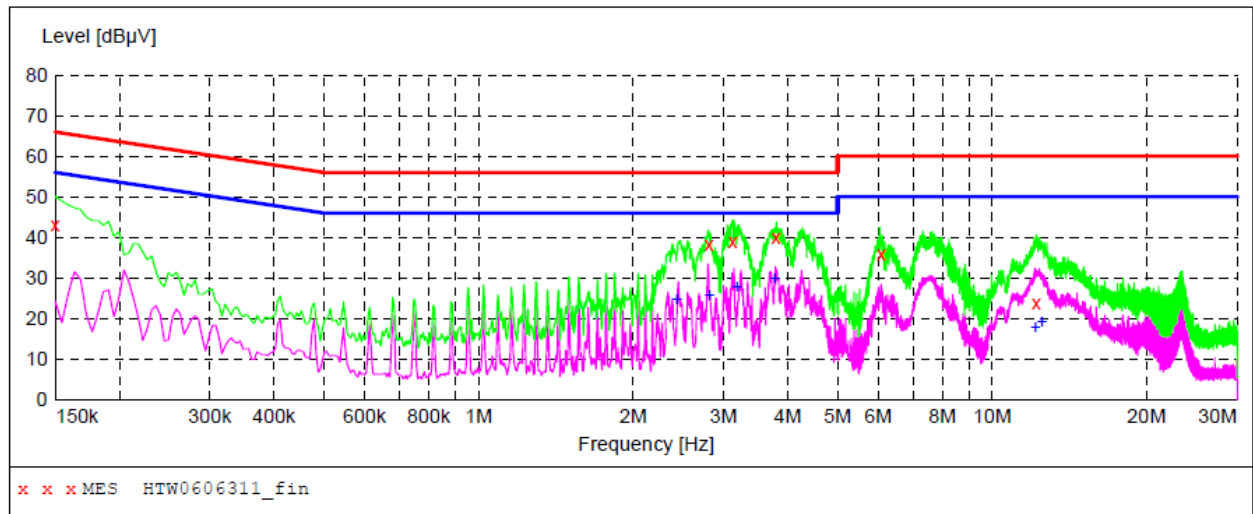
#### CONDUCTED POWER LINE EMISSION LIMIT

For unintentional device, according to § 15.107(a) Line Conducted Emission Limits is as following :

Frequency (MHz)	Maximum RF Line Voltage (dBμV)			
	CLASS A		CLASS B	
	Q.P.	Ave.	Q.P.	Ave.
0.15 - 0.50	79	66	66-56*	56-46*
0.50 - 5.00	73	60	56	46
5.00 - 30.0	73	60	60	50

**TEST RESULTS****SCAN TABLE: "Voltage (9K-30M)FIN"**

Short Description: 150K-30M Voltage

**MEASUREMENT RESULT: "HTW0606311\_fin"**

6/6/2013 10:41AM

Frequency MHz	Level dBμV	Transd dB	Limit dBμV	Margin dB	Detector	Line	PE
0.150000	43.10	10.2	66	22.9	QP	L1	GND
2.809500	38.30	10.2	56	17.7	QP	L1	GND
3.129000	39.10	10.2	56	16.9	QP	L1	GND
3.795000	40.00	10.2	56	16.0	QP	L1	GND
6.085500	36.00	10.2	60	24.0	QP	L1	GND
12.201000	23.80	10.3	60	36.2	QP	L1	GND

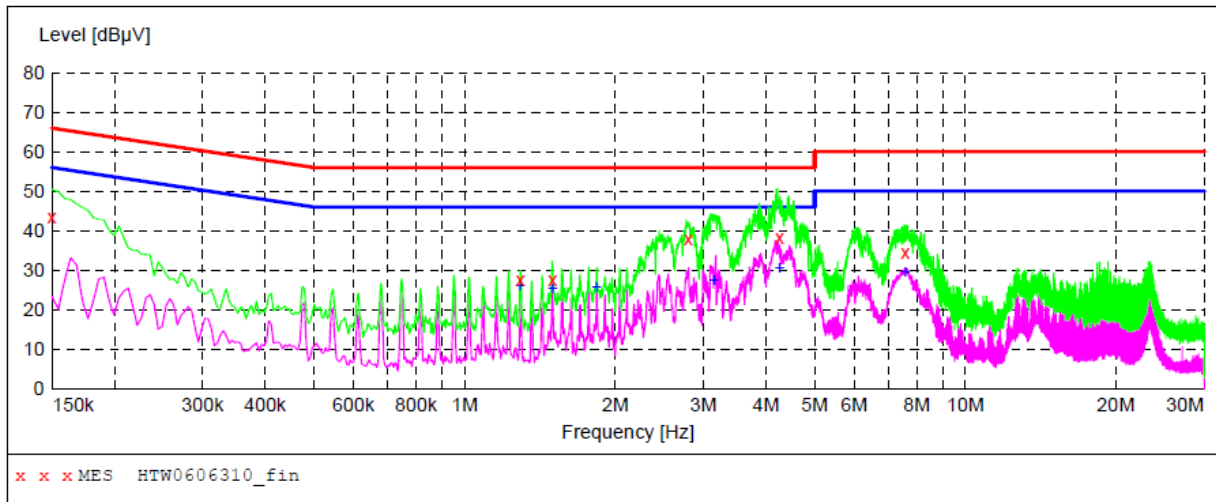
**MEASUREMENT RESULT: "HTW0606311\_fin2"**

6/6/2013 10:41AM

Frequency MHz	Level dBμV	Transd dB	Limit dBμV	Margin dB	Detector	Line	PE
2.431500	24.80	10.2	46	21.2	AV	L1	GND
2.814000	25.80	10.2	46	20.2	AV	L1	GND
3.187500	28.10	10.2	46	17.9	AV	L1	GND
3.772500	29.90	10.2	46	16.1	AV	L1	GND
12.133500	17.90	10.3	50	32.1	AV	L1	GND
12.502500	19.50	10.3	50	30.5	AV	L1	GND

**SCAN TABLE: "Voltage (9K-30M)FIN"**

Short Description: 150K-30M Voltage

**MEASUREMENT RESULT: "HTW0606310\_fin"**

6/6/2013 10:39AM

Frequency MHz	Level dBμV	Transd dB	Limit dBμV	Margin dB	Detector	Line	PE
0.150000	43.60	10.2	66	22.4	QP	N	GND
1.293000	27.70	10.2	56	28.3	QP	N	GND
1.500000	27.80	10.2	56	28.2	QP	N	GND
2.800500	38.00	10.2	56	18.0	QP	N	GND
4.254000	38.30	10.2	56	17.7	QP	N	GND
7.597500	34.60	10.3	60	25.4	QP	N	GND

**MEASUREMENT RESULT: "HTW0606310\_fin2"**

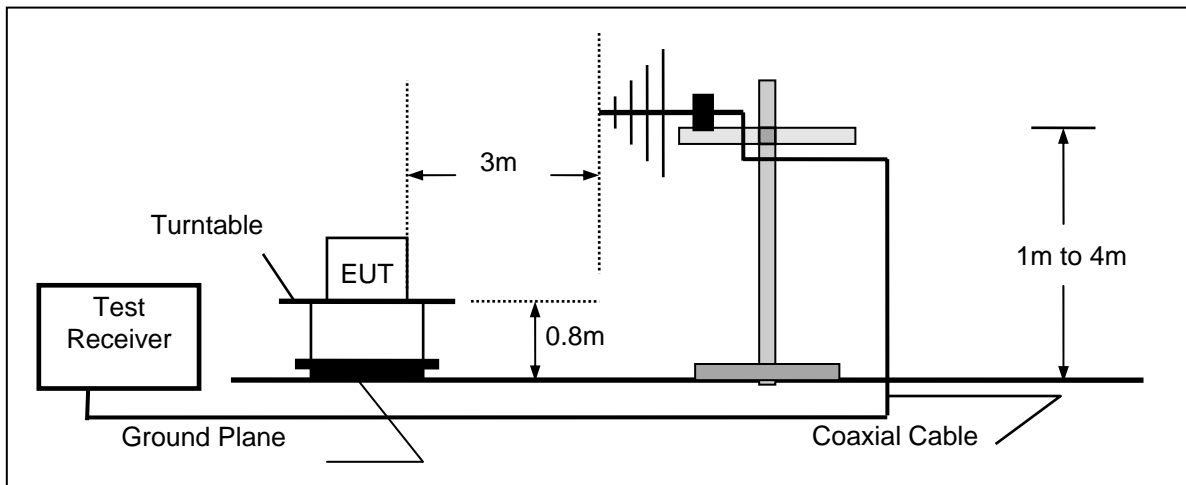
6/6/2013 10:39AM

Frequency MHz	Level dBμV	Transd dB	Limit dBμV	Margin dB	Detector	Line	PE
1.293000	26.30	10.2	46	19.7	AV	N	GND
1.500000	25.60	10.2	46	20.4	AV	N	GND
1.837500	25.90	10.2	46	20.1	AV	N	GND
3.147000	27.60	10.2	46	18.4	AV	N	GND
4.254000	30.60	10.2	46	15.4	AV	N	GND
7.584000	29.60	10.3	50	20.4	AV	N	GND

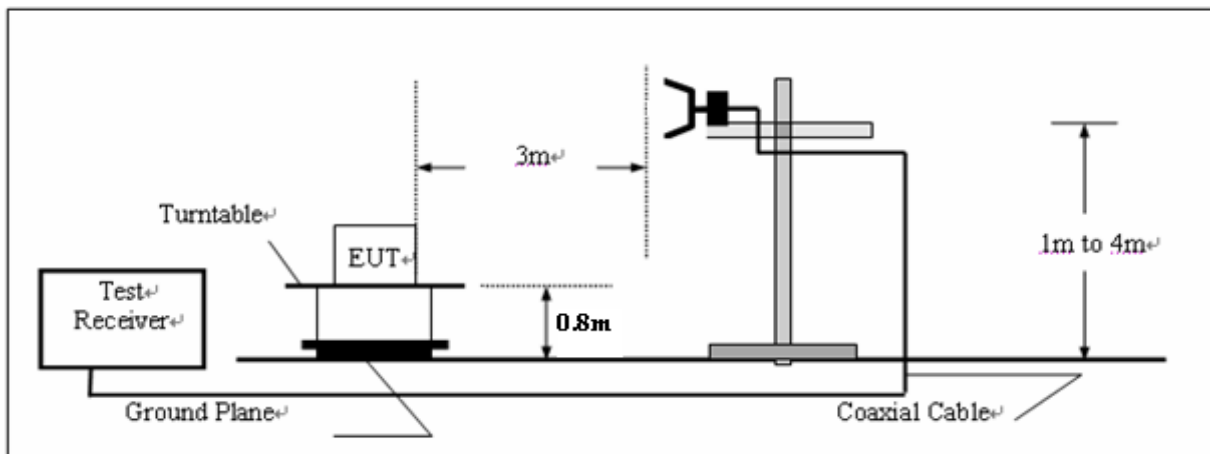
## 4.2. Radiated Emission Test

### TEST CONFIGURATION

#### a) Radiated Emission Test Set-Up, Frequency below 1000MHz



#### b) Radiated Emission Test Set-Up, Frequency above 1000MHz



### TEST PROCEDURE

1. The EUT is placed on a turntable, which is 0.8m above ground plane.
2. The turntable shall be rotated for 360 degrees to determine the position of maximum emission level.
3. EUT is set 3m away from the receiving antenna, which is varied from 1m to 4m to find out the highest emissions.
4. Maximum procedure was performed on the six highest emissions to ensure EUT compliance.
5. And also, each emission was to be maximized by changing the polarization of receiving antenna both horizontal and vertical.
6. Repeat above procedures until the measurements for all frequencies are complete.

**FIELD STRENGTH CALCULATION**

The field strength is calculated by adding the Antenna Factor and Cable Factor and subtracting the Amplifier Gain and Duty Cycle Correction Factor (if any) from the measured reading. The basic equation with a sample calculation is as follows:

$$FS = RA + AF + CL - AG$$

Where FS = Field Strength	CL = Cable Attenuation Factor (Cable Loss)
RA = Reading Amplitude	AG = Amplifier Gain
AF = Antenna Factor	

For example

Frequency (MHz)	FS (dB $\mu$ V/m)	RA (dB $\mu$ V/m)	AF (dB)	CL (dB)	AG (dB)	Transd (dB)
300.00	40	58.1	12.2	1.6	31.90	-18.1

$$\text{Transd} = \text{AF} + \text{CL} - \text{AG}$$

**RADIATION LIMIT**

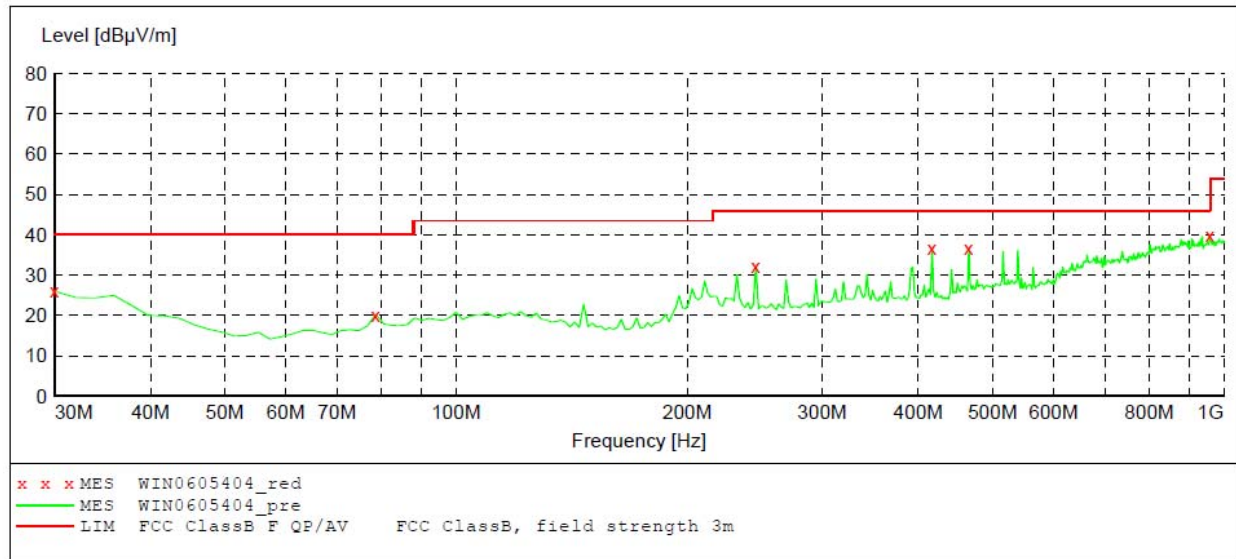
According to § 15.109(a), except for Class A digital devices, the field strength of radiated emissions from unintentional radiators at a distance of 3 meters shall not exceed the following values:

Frequency (MHz)	Distance (Meters)	Radiated (dB $\mu$ V/m)	Radiated ( $\mu$ V/m)
30-88	3	40.0	100
88-216	3	43.5	150
216-960	3	46.0	200
Above 960	3	54.0	500

**TEST RESULTS****30MHz-1GHz****SCAN TABLE: "test Field (30M-1G) QP"**

Short Description: Field Strength (30M-1G)

Start	Stop	Step	Detector	Meas.	IF	Transducer
Frequency	Frequency	Width		Time	Bandw.	
30.0 MHz	1.0 GHz	60.0 kHz	QuasiPeak	1.0 s	120 kHz	HL562

**MEASUREMENT RESULT: "WIN0605404\_red"**

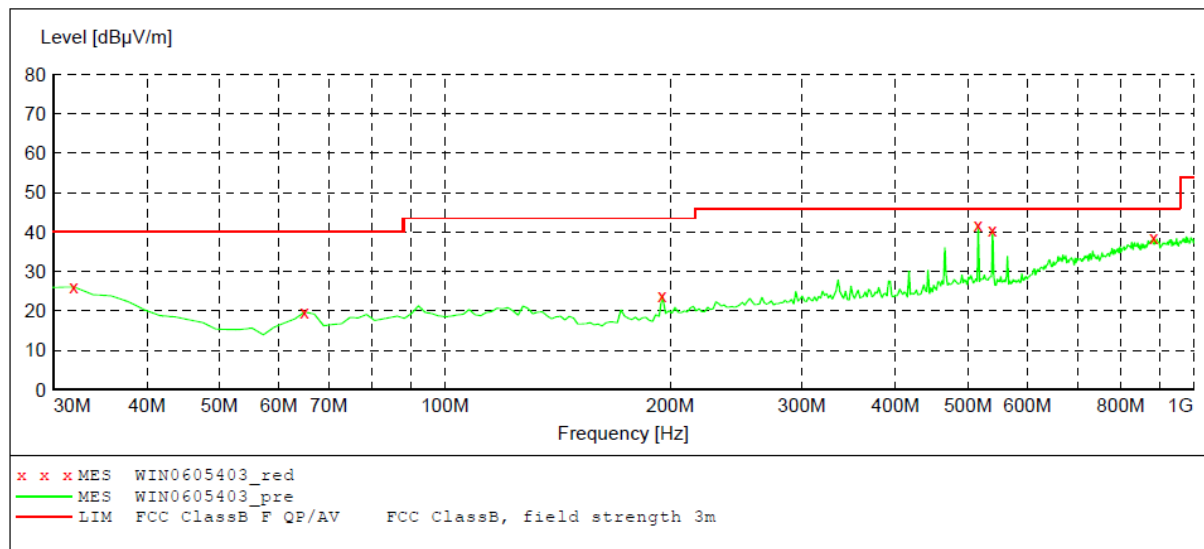
6/5/2013 9:41AM

Frequency MHz	Level dBμV/m	Transd dB	Limit dBμV/m	Margin dB	Det.	Height cm	Azimuth deg	Polarization
30.000000	26.00	-10.0	40.0	14.0	QP	100.0	81.00	HORIZONTAL
78.597194	20.20	-20.8	40.0	19.8	QP	300.0	314.00	HORIZONTAL
245.771543	32.20	-17.1	46.0	13.8	QP	100.0	193.00	HORIZONTAL
416.833667	36.70	-13.4	46.0	9.3	QP	100.0	235.00	HORIZONTAL
465.430862	36.60	-12.0	46.0	9.4	QP	100.0	235.00	HORIZONTAL
959.178357	39.90	-4.2	46.0	6.1	QP	100.0	200.00	HORIZONTAL

**SCAN TABLE: "test Field (30M-1G) QP"**

Short Description: Field Strength (30M-1G)

Start	Stop	Step	Detector	Meas. Time	IF Bandw.	Transducer
Frequency	Frequency	Width				
30.0 MHz	1.0 GHz	60.0 kHz	QuasiPeak	1.0 s	120 kHz	HL562

**MEASUREMENT RESULT: "WIN0605403\_red"**

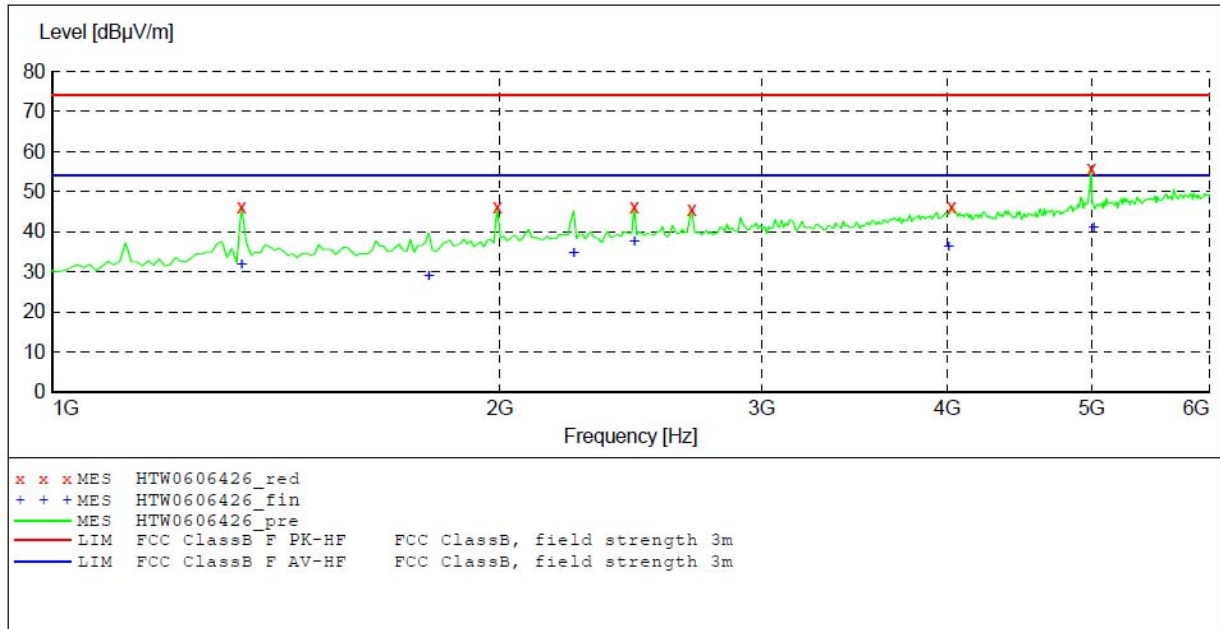
6/5/2013 9:38AM

Frequency MHz	Level dBμV/m	Transd dB	Limit dBμV/m	Margin dB	Det.	Height cm	Azimuth deg	Polarization
31.943888	26.10	-11.1	40.0	13.9	QP	100.0	71.00	VERTICAL
64.989980	19.70	-22.4	40.0	20.3	QP	100.0	88.00	VERTICAL
195.230461	24.00	-20.0	43.5	19.5	QP	100.0	82.00	VERTICAL
515.971944	41.80	-11.1	46.0	4.2	QP	100.0	148.00	VERTICAL
539.298597	40.40	-11.5	46.0	5.6	QP	100.0	148.00	VERTICAL
885.310621	38.60	-4.2	46.0	7.4	QP	100.0	35.00	VERTICAL



**1GHz-6GHz****SCAN TABLE: "test (1G-18G) P"**

Short Description:		FCC PART 15B Field Strength			
Start	Stop	Detector	Meas.	IF	Transducer
Frequency	Frequency	MaxPeak	Time	Bandw.	
1.0 GHz	18.0 GHz	Average	Coupled	1 MHz	HF906

**MEASUREMENT RESULT: "HTW0606426\_red"**

6/6/2013 12:59AM

Frequency MHz	Level dBμV/m	Transd dB	Limit dBμV/m	Margin dB	Det.	Height cm	Azimuth deg	Polarization
1340.680000	46.10	-10.7	74.0	27.9	PK	100.0	154.00	HORIZONTAL
1991.980000	46.30	-6.7	74.0	27.7	PK	100.0	187.00	HORIZONTAL
2462.920000	46.10	-4.8	74.0	27.9	PK	100.0	114.00	HORIZONTAL
2693.380000	45.50	-4.1	74.0	28.5	PK	100.0	165.00	HORIZONTAL
4026.050000	46.20	-0.4	74.0	27.8	PK	100.0	171.00	HORIZONTAL
4997.990000	55.90	1.2	74.0	18.1	PK	100.0	124.00	HORIZONTAL

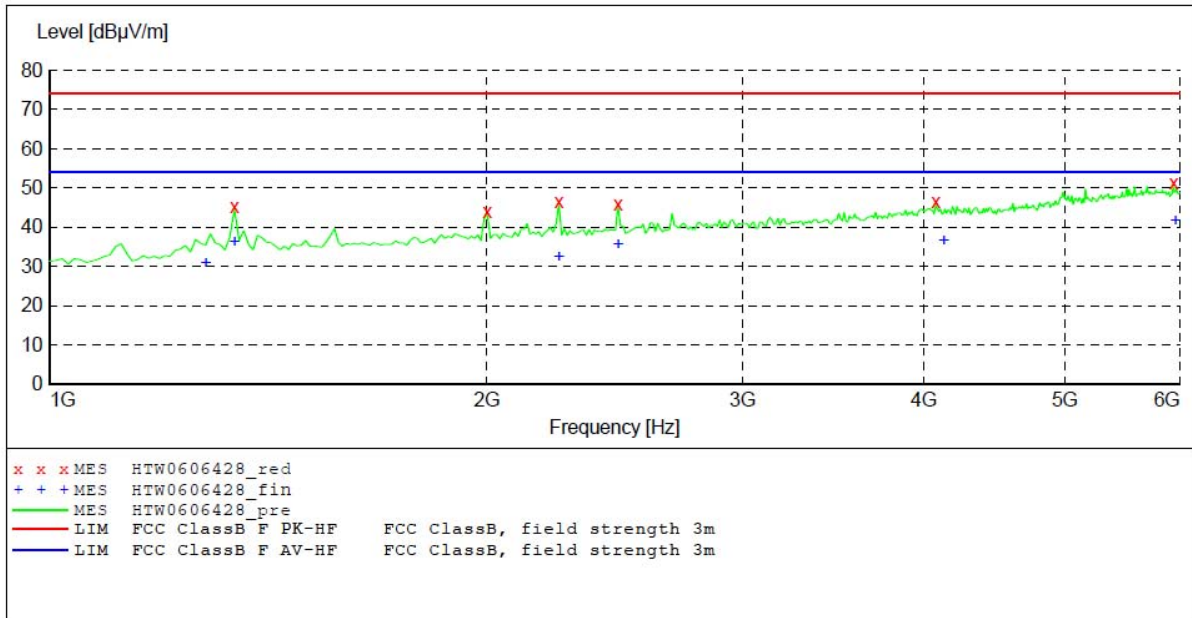
**MEASUREMENT RESULT: "HTW0606426\_fin"**

6/6/2013 12:59AM

Frequency MHz	Level dBμV/m	Transd dB	Limit dBμV/m	Margin dB	Det.	Height cm	Azimuth deg	Polarization
1340.680000	31.90	-10.7	54.0	22.1	AV	100.0	154.00	HORIZONTAL
1791.580000	28.90	-7.9	54.0	25.1	AV	100.0	142.00	HORIZONTAL
2242.480000	34.60	-5.6	54.0	19.4	AV	100.0	225.00	HORIZONTAL
2462.920000	37.50	-4.8	54.0	16.5	AV	100.0	114.00	HORIZONTAL
4006.010000	36.40	-0.4	54.0	17.6	AV	100.0	124.00	HORIZONTAL
4998.230000	41.20	2.3	54.0	12.8	AV	100.0	29.00	HORIZONTAL

**SCAN TABLE: "test (1G-18G) P"**

Short Description: FCC PART 15B Field Strength  
 Start Stop Detector Meas. IF Transducer  
 Frequency Frequency MaxPeak Time Bandw.  
 1.0 GHz 18.0 GHz Average Coupled 1 MHz HF906

**MEASUREMENT RESULT: "HTW0606428\_red"**

6/6/2013 12:56AM

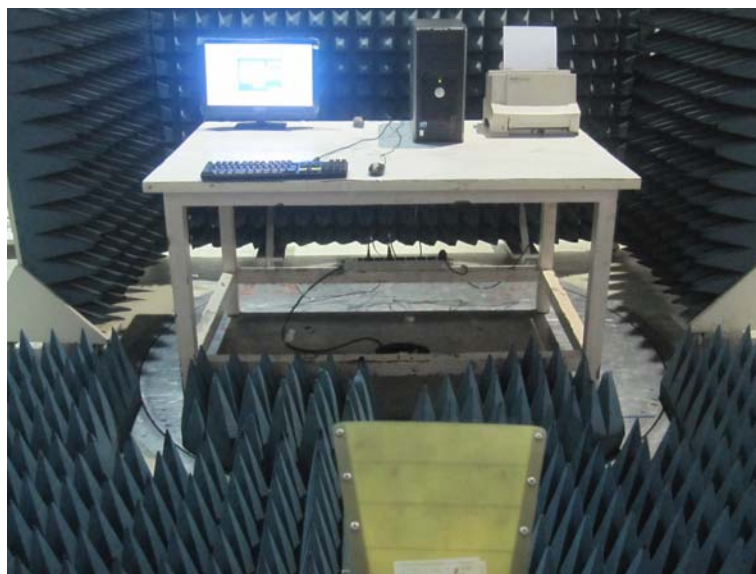
Frequency MHz	Level dBuV/m	Transd dB	Limit dBuV/m	Margin dB	Det.	Height cm	Azimuth deg	Polarization
1340.680000	44.60	-10.7	74.0	29.4	PK	100.0	219.00	VERTICAL
2002.000000	43.40	-6.6	74.0	30.6	PK	100.0	29.00	VERTICAL
2242.480000	46.00	-5.6	74.0	28.0	PK	100.0	158.00	VERTICAL
2462.920000	45.40	-4.8	74.0	28.6	PK	100.0	172.00	VERTICAL
4076.150000	46.00	-0.4	74.0	28.0	PK	100.0	352.00	VERTICAL
5939.870000	50.80	2.6	74.0	23.2	PK	100.0	245.00	VERTICAL

**MEASUREMENT RESULT: "HTW0606428\_fin"**

6/6/2013 12:56AM

Frequency MHz	Level dBuV/m	Transd dB	Limit dBuV/m	Margin dB	Det.	Height cm	Azimuth deg	Polarization
1280.560000	30.30	-10.9	54.0	23.7	AV	100.0	226.00	VERTICAL
1340.680000	35.60	-10.7	54.0	18.4	AV	100.0	219.00	VERTICAL
2242.480000	31.90	-5.6	54.0	22.1	AV	100.0	69.00	VERTICAL
2462.920000	35.00	-4.8	54.0	19.0	AV	100.0	172.00	VERTICAL
4126.250000	36.20	-0.4	54.0	17.8	AV	100.0	322.00	VERTICAL
5959.910000	41.10	2.6	54.0	12.9	AV	100.0	356.00	VERTICAL

## 5. Test Setup Photos of the EUT



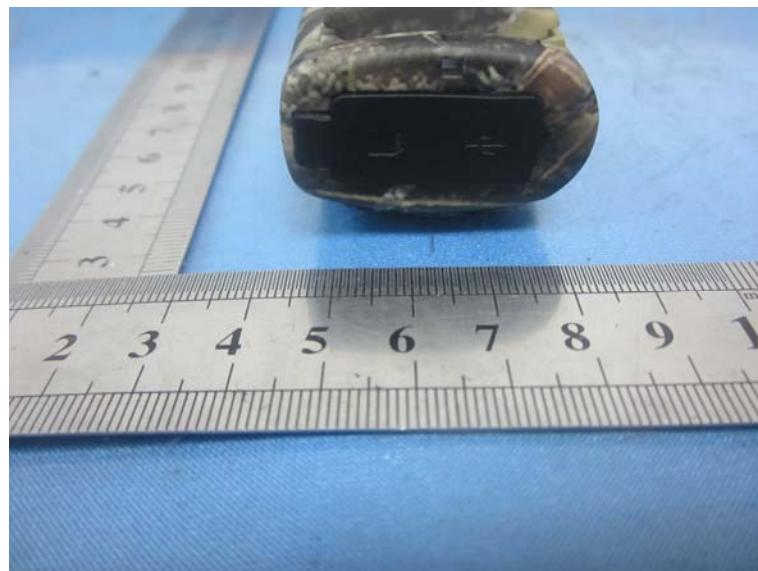




## 6. External and internal Photos of the EUT

### External Photos







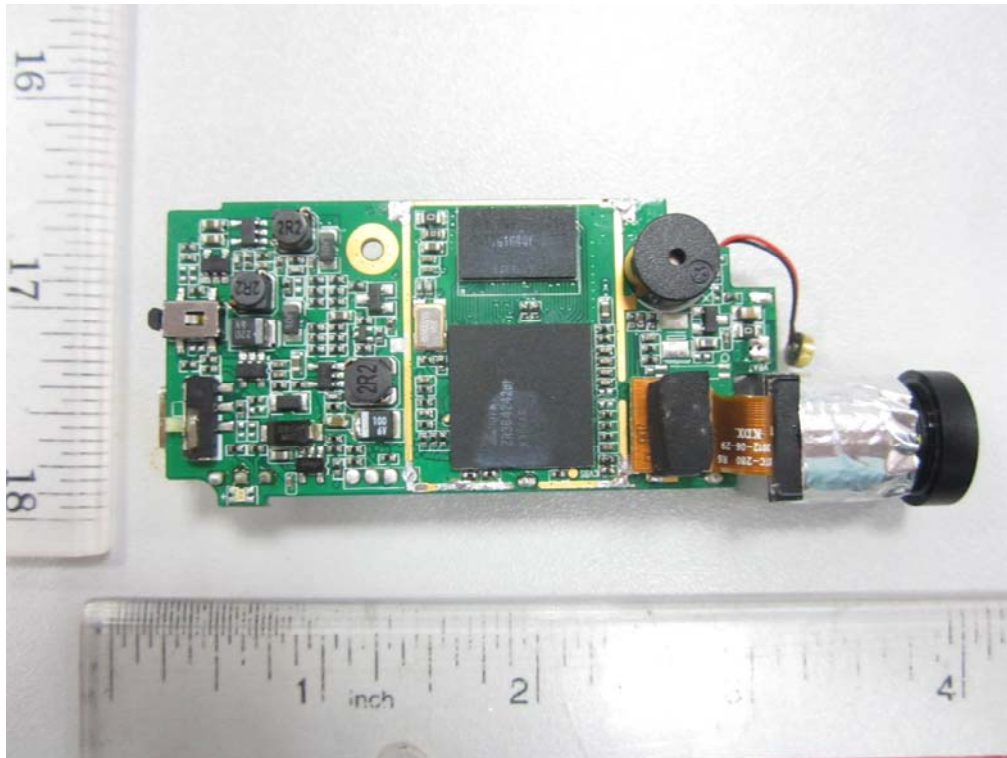


### Internal Photos











.....End of Report.....