



# FCC SAR TEST REPORT

Report No.: STS2011113H01

Issued for

Midland Radio Corporation

5900 Parretta Drive Kansas City, MO 62120 USA

<b>Product Name:</b>	Handheld UHF Transceiver
<b>Brand Name:</b>	Midland
<b>Model Name:</b>	BR180
<b>Series Model:</b>	N/A
<b>FCC ID:</b>	MMABR180
<b>Test Standard:</b>	ANSI/IEEE Std. C95.1
	FCC 47 CFR Part 2 ( 2.1093)
	IEEE 1528: 2013
<b>Max. Report SAR (1g):</b>	Face up : 1.287 W/kg
	Back side: 0.856 W/kg

Any reproduction of this document must be done in full. No single part of this document may be reproduced without permission from STS, All Test Data Presented in this report is only applicable to presented Test sample.

ShenZhen STS Test Services Co.,Ltd.

A 1/F, Building B, Zhuoke Science Park, No.190 Chongqing Road, HepingShequ, Fuyong Sub-District, Bao'an District, Shenzhen, Guang Dong, China

TEL: +86-755 3688 6288 FAX: +86-755 3688 6277 E-mail:sts@stsapp.com





### Test Report Certification

**Applicant's name** .....: Midland Radio Corporation  
 Address .....: 5900 Parretta Drive Kansas City, MO 62120 USA  
**Manufacture's Name** .....: Midland Radio Corporation  
 Address .....: 5900 Parretta Drive Kansas City, MO 62120 USA

#### Product description

Product name .....: Handheld UHF Transceiver  
 Brand Name.....: Midland  
 Model name .....: BR180  
 Series Model.....: N/A

**Standards** .....: ANSI/IEEE Std. C95.1  
 IEEE 1528:2013  
 FCC 47 CFR Part 2 ( 2.1093)

The device was tested by Shenzhen STS Test Services Co., Ltd. in accordance with the measurement methods and procedures specified in KDB 865664 The test results in this report apply only to the tested sample of the stated device/equipment. Other similar device/equipment will not necessarily produce the same results due to production tolerance and measurement uncertainties.

**Date of Test** .....:  
 Date (s) of performance of tests .....: 17 Nov. 2020  
 Date of Issue.....: 20 Nov. 2020  
 Test Result.....: **Pass**

Testing Engineer :

*Lemon Li*

(Lemon Li)

Technical Manager :

*Sean She*

(Sean she)

Authorized Signatory :

*Vita Li*

(Vita Li)





## Table of Contents

<b>1. General Information</b>	<b>5</b>
1.1 EUT Description	5
1.2 Test Environment	6
1.3 Test Factory	6
<b>2. Test Standards and Limits</b>	<b>7</b>
<b>3. SAR Measurement System</b>	<b>8</b>
3.1 Definition of Specific Absorption Rate (SAR)	8
3.2 SAR System	8
<b>4. Tissue Simulating Liquids</b>	<b>11</b>
4.1 Simulating Liquids Parameter Check	11
<b>5. SAR System Validation</b>	<b>13</b>
5.1 Validation System	13
5.2 Validation Result	13
<b>6. SAR Evaluation Procedures</b>	<b>14</b>
<b>7. EUT Test Position</b>	<b>15</b>
<b>8. Uncertainty</b>	<b>16</b>
8.1 Measurement Uncertainty	16
8.2 System validation Uncertainty	17
<b>9. Conducted Power Measurement</b>	<b>18</b>
Test Result	18
Analog	18
<b>10. EUT And Test Setup Photo</b>	<b>19</b>
10.1 EUT Photo	19
10.2 Setup Photo	22
<b>11. SAR Result Summary</b>	<b>24</b>
<b>12. Equipment List</b>	<b>25</b>
<b>Appendix A. System Validation Plots</b>	<b>26</b>
<b>Appendix B. SAR Test Plots</b>	<b>28</b>
<b>Appendix C. Probe Calibration and Dipole Calibration Report</b>	<b>30</b>



### Revision History

Rev.	Issue Date	Report No.	Effect Page	Contents
00	20 Nov. 2020	STS2011113H01	ALL	Initial Issue

Note: **Format version** of the report -V01





## 1. General Information

### 1.1 EUT Description

Equipment	Handheld UHF Transceiver			
Brand Name	Midland			
Model name	BR180			
Series Model	N/A			
Model Difference	N/A			
Device Category	Portable			
Product stage	Production unit			
RF Exposure Environment	Occupational/controlled			
Hardware Version	1.0			
Software Version	1.0			
Frequency Range	450 MHz - 470 MHz			
Channel Spacing	12.5KHz			
Max. Reported SAR(1g):	With 50% duty cycle	Frequency(MHz)	Face up (W/kg)	Back Side (W/kg)
		451.1875	1.287	0.856
		461.0375	0.137	0.209
		462.9125	0.131	0.185
		469.5625	0.094	0.135
Modulation Type:	FM			
Antenna Specification:	External Antenna			
Note: 1. The EUT battery must be fully charged and checked periodically during the test to ascertain uniform power				



## 1.2 Test Environment

Ambient conditions in the SAR laboratory:

Items	Required
Temperature (°C)	18-25
Humidity (%RH)	30-70

## 1.3 Test Factory

ShenZhen STS Test Services Co.,Ltd.

A 1/F, Building B, Zhuoke Science Park, No.190 Chongqing Road, HepingShequ, Fuyong Sub-District, Bao'an District, Shenzhen, Guang Dong, China

FCC Registration No.: 625569

A2LA Certificate No.: 4338.01

IC Registration No.: 12108A





## 2. Test Standards and Limits

No.	Identity	Document Title
1	47 CFR Part 2	Frequency Allocations and Radio Treaty Matters; General Rules and Regulations
2	ANSI/IEEE Std. C95.1-1992	IEEE Standard for Safety Levels with Respect to Human Exposure to Radio Frequency Electromagnetic Fields, 3 kHz to 300 GHz
3	IEEE Std. 1528-2013	Recommended Practice for Determining the Peak Spatial-Average Specific Absorption Rate (SAR) in the Human Head from Wireless Communications Devices: Measurement Techniques
4	FCC KDB 447498 D01 v06	Mobile and Portable Device RF Exposure Procedures and Equipment Authorization Policies
5	FCC KDB 865664 D01 v01r04	SAR Measurement 100 MHz to 6 GHz
6	FCC KDB 865664 D02 v01r02	RF Exposure Reporting
7	FCC KDB 643646 D001	SAR Test Reduction Considerations for Occupational PTT Radios

### (A). Limits for Occupational/Controlled Exposure (W/kg)

Whole-Body	Partial-Body	Hands, Wrists, Feet and Ankles
0.4	8.0	20.0

### (B). Limits for General Population/Uncontrolled Exposure (W/kg)

Whole-Body	Partial-Body	Hands, Wrists, Feet and Ankles
0.08	1.6	4.0

NOTE: Whole-Body SAR is averaged over the entire body, partial-body SAR is averaged over any 1 gram of tissue defined as a tissue volume in the shape of a cube. SAR for hands, wrists, feet and ankles is averaged over any 10 grams of tissue defined as a tissue volume in the shape of a cube.

#### **Population/Uncontrolled Environments:**

Are defined as locations where there is the exposure of individuals who have no knowledge or control of their exposure.

#### **Occupational/Controlled Environments:**

Are defined as locations where there is exposure that may be incurred by people who are aware of the potential for exposure, (i.e. as a result of employment or occupation).

#### **NOTE**

#### **OCCUPATIONAL/CONTROLLED EXPOSURE**

#### **PARTIAL BODY LIMIT**

**8.0 W/kg**

### 3. SAR Measurement System

#### 3.1 Definition of Specific Absorption Rate (SAR)

SAR is related to the rate at which energy is absorbed per unit mass in an object exposed to a radio field. The SAR distribution in a biological body is complicated and is usually carried out by experimental techniques or numerical modeling. The standard recommends limits for two tiers of groups, occupational/controlled and general population/uncontrolled, based on a person's awareness and ability to exercise control over his or her exposure. In general, occupational/controlled exposure limits are higher than the limits for general population/uncontrolled.

The SAR definition is the time derivative (rate) of the incremental energy (dW) absorbed by (dissipated in) an incremental mass (dm) contained in a volume element (dv) of a given density (ρ). The equation description is as below:

$$SAR = \frac{d}{dt} \left( \frac{dW}{dm} \right) = \frac{d}{dt} \left( \frac{dW}{\rho dv} \right)$$

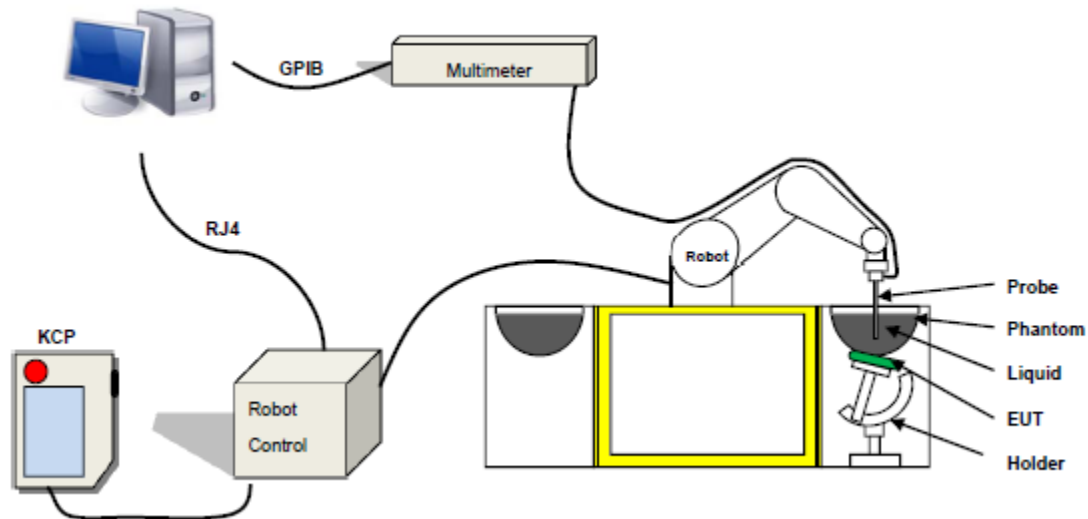
SAR is expressed in units of Watts per kilogram (W/kg) SAR measurement can be related to the electrical field in the tissue by

$$SAR = \frac{\sigma E^2}{\rho}$$

Where: σ is the conductivity of the tissue,  
ρ is the mass density of the tissue and E is the RMS electrical field strength.

#### 3.2 SAR System

MVG SAR System Diagram:



COMOSAR is a system that is able to determine the SAR distribution inside a phantom of human being according to different standards. The COMOSAR system consists of the following items:

- Main computer to control all the system
- 6 axis robot
- Data acquisition system
- Miniature E-field probe
- Phone holder
- Head simulating tissue



The following figure shows the system.



The EUT under test operating at the maximum power level is placed in the phone holder, under the phantom, which is filled with head simulating liquid. The E-Field probe measures the electric field inside the phantom. The Open SAR software computes the results to give a SAR value in a 1g or 10g mass.

### 3.2.1 Probe

For the measurements the Specific Dosimetric E-Field Probe SN 41/18 EPGO334 with following specifications is used

- Probe Length: 330 mm
- Length of Individual Dipoles: 2 mm
- Maximum external diameter: 8 mm
- Probe Tip External Diameter: 2.5 mm
- Distance between dipole/probe extremity: 1 mm
- Dynamic range: 0.01-100 W/kg
- Probe linearity: 3%
- Axial Isotropy: < 0.10 dB
- Spherical Isotropy: < 0.10 dB
- Calibration range: 450 MHz to 6 GHz for head & body simulating liquid.
- Angle between probe axis (evaluation axis) and surface normal line: less than 30°



Figure 1-MVG COMOSAR Dosimetric E field Dipole

### 3.2.2 Phantom

For the measurements the Specific Anthropomorphic Mannequin (SAM) defined by the IEEE SCC-34/SC2 group is used. The phantom is a polyurethane shell integrated in a wooden table. The thickness of the phantom amounts to 2mm +/- 0.2mm. It enables the dosimetric evaluation of left and right phone usage and includes an additional flat phantom part for the simplified performance check. The phantom set-up includes a cover, which prevents the evaporation of the liquid.

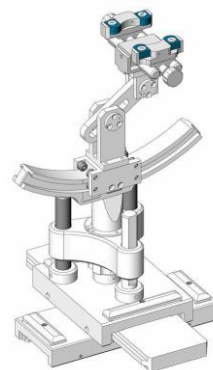


Figure-SN 32/14 SAM115



Figure-SN 32/14 SAM116

### 3.2.3 Device Holder



The SAR in the phantom is approximately inversely proportional to the square of the distance between the source and the liquid surface. For a source at 5 mm distance, a positioning uncertainty of  $\pm 0.5$  mm would produce a SAR uncertainty of  $\pm 20$  %. Accurate device positioning is therefore crucial for accurate and repeatable measurements. The positions in which the devices must be measured are defined by the standards.



## 4. Tissue Simulating Liquids

### 4.1 Simulating Liquids Parameter Check

The head tissue dielectric parameters recommended by the IEEE SCC-34/SC-2 in P1528 have been incorporated in the following table. These head parameters are derived from planar layer models simulating the highest expected SAR for the dielectric properties and tissue thickness variations in a human head. Other head and body tissue parameters that have not been specified in P1528 are derived from the tissue dielectric parameters computed from the 4-Cole-Cole equations described in Reference [12] and extrapolated according to the head parameters specified in P1528.

Frequency (MHz)	Bactericide	DGBE	HEC	NaCl	Sucrose	1,2-Propanediol	X100	Water	Conductivity	Permittivity
	%	%	%	%	%	%	%	%	$\sigma$	$\epsilon_r$
450	0.19		0.98	3.95	56.32			38.56	0.85	43.4
750	/	/	/	0.79	/	64.81	/	34.40	0.97	41.8
835	/	/	/	0.79	/	64.81	/	34.40	0.97	41.8
900	/	/	/	0.79	/	64.81	/	34.40	0.97	41.8
1800	/	13.84	/	0.35	/	/	30.45	55.36	1.38	41.0
1900	/	13.84	/	0.35	/	/	30.45	55.36	1.38	41.0
2000	/	7.99	/	0.16	/	/	19.97	71.88	1.55	41.1
2450	/	7.99	/	0.16	/	/	19.97	71.88	1.88	40.3
2600	/	7.99	/	0.16	/	/	19.97	71.88	1.88	40.3

Tissue dielectric parameters for head and body phantoms				
Frequency	$\epsilon_r$		$\sigma$ S/m	
	Head	Body	Head	Body
300	45.3	58.2	0.87	0.92
450	43.5	56.7	0.87	0.94
900	41.5	55.0	0.97	1.05
1450	40.5	54.0	1.20	1.30
1800	40.0	53.3	1.40	1.52
2450	39.2	52.7	1.80	1.95
3000	38.5	52.0	2.40	2.73
5800	35.3	48.2	5.27	6.00

**LIQUID MEASUREMENT RESULTS**

Date	Ambient		Simulating Liquid		Parameters	Target	Measured	Deviation %	Limited %
	Temp. [°C]	Humidity %	Frequency	Temp. [°C]					
2020-11-18	23.0	54	450 MHz	22.8	Permittivity	43.5	43.63	0.30	±10
					Conductivity	0.87	0.87	0.00	±10

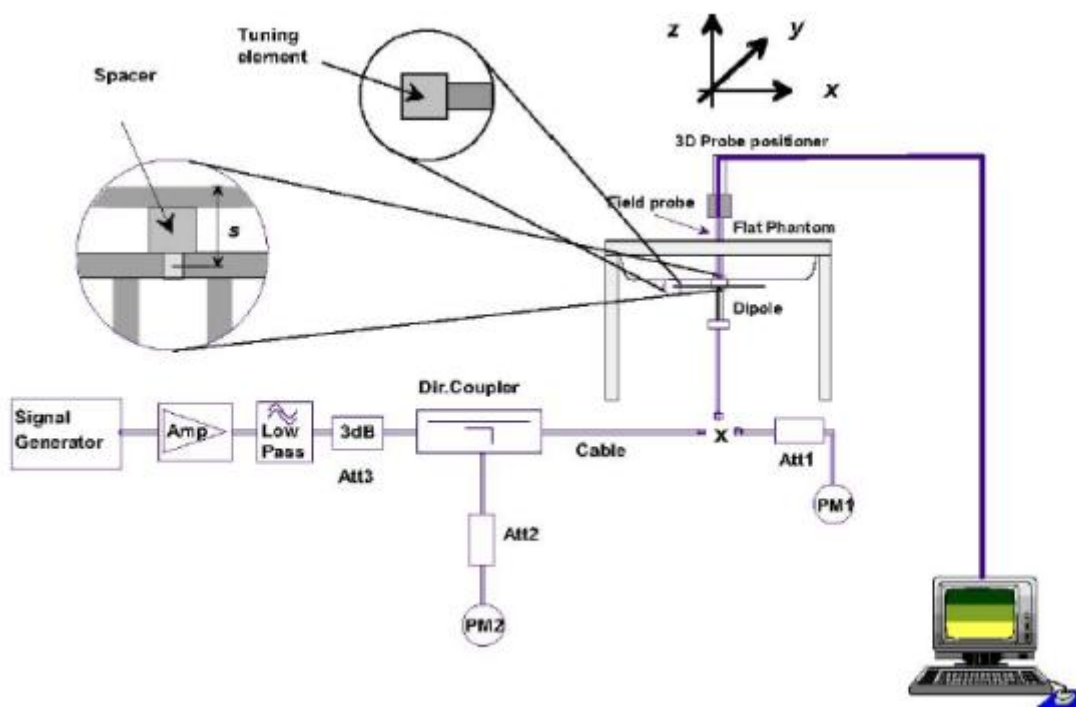


## 5. SAR System Validation

### 5.1 Validation System

Each MVG system is equipped with one or more system validation kits. These units, together with the predefined measurement procedures within the MVG software, enable the user to conduct the system performance check and system validation. System kit includes a dipole, and dipole device holder.

The system check verifies that the system operates within its specifications. It's performed daily or before every SAR measurement. The system check uses normal SAR measurement in the flat section of the phantom with a matched dipole at a specified distance. The system validation setup is shown as below.



### 5.2 Validation Result

Comparing to the original SAR value provided by MVG, the validation data should be within its specification of 10 %.

Freq.(MHz)	Power(mW)	Tested Value (W/Kg)	Normalized SAR (W/kg)	Target(W/Kg)	Tolerance(%)	Date
450	100	0.471	4.71	4.58	2.84	2020-11-18

Note:

1. The tolerance limit of System validation  $\pm 10\%$ .
2. The dipole input power (forward power) was 100 mW.
3. The results are normalized to 1 W input power.



## 6. SAR Evaluation Procedures

The procedure for assessing the average SAR value consists of the following steps:

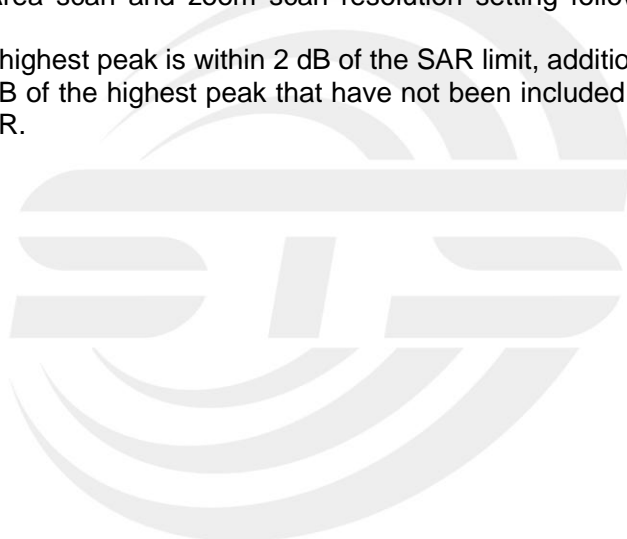
The following steps are used for each test position

- Establish a call with the maximum output power with a base station simulator. The connection between the mobile and the base station simulator is established via air interface
- Measurement of the local E-field value at a fixed location. This value serves as a reference value for calculating a possible power drift.
- Measurement of the SAR distribution with a grid of 8 to 16mm \* 8 to 16 mm and a constant distance to the inner surface of the phantom. Since the sensors cannot directly measure at the inner phantom surface, the values between the sensors and the inner phantom surface are extrapolated. With these values the area of the maximum SAR is calculated by an interpolation scheme.
- Around this point, a cube of 30 \* 30 \* 30 mm or 32 \* 32 \* 32 mm is assessed by measuring 5 or 8 \* 5 or 8\*4 or 5 mm. With these data, the peak spatial-average SAR value can be calculated.

Area Scan& Zoom Scan:

First Area Scan is used to locate the approximate location(s) of the local peak SAR value(s). The measurement grid within an Area Scan is defined by the grid extent, grid step size and grid offset. Next, in order to determine the EM field distribution in a three-dimensional spatial extension, Zoom Scan is required. The Zoom Scan is performed around the highest E-field value to determine the averaged SAR -distribution over 10 g. Area scan and zoom scan resolution setting follows KDB 865664 D01v01r01 quoted below.

When the 1-g SAR of the highest peak is within 2 dB of the SAR limit, additional zoom scans are required for other peaks within 2 dB of the highest peak that have not been included in any zoom scan to ensure there is no increase in SAR.



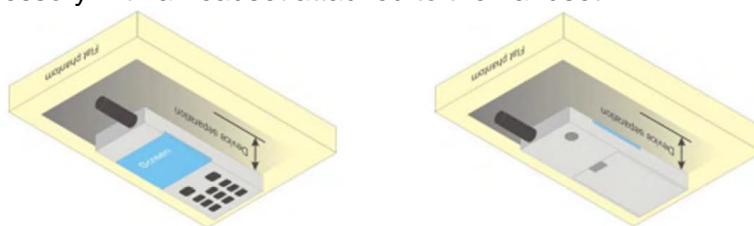


## 7. EUT Test Position

This EUT was tested in Front Face and Rear Face.

Body-worn Position Conditions:

Body-worn accessory exposure is typically related to voice mode operations when handsets are carried in body-worn accessories. The body-worn accessory procedures in KDB Publication 447498 D01 should be used to test for body-worn accessory SAR compliance, without a headset connected to it. When the same wireless transmission configuration is used for testing body-worn accessory and hotspot mode SAR, respectively, in voice and data mode, SAR results for the most conservative *test separation distance* configuration may be used to support both SAR conditions. When the *reported SAR* for a body-worn accessory, measured without a headset connected to the handset, is  $> 1.2 \text{ W/kg}$ , the highest *reported SAR* configuration for that wireless mode and frequency band should be repeated for the body-worn accessory with a headset attached to the handset.





## 8. Uncertainty

### 8.1 Measurement Uncertainty

The following measurement uncertainty levels have been estimated for tests performed on the EUT as specified in IEEE 1528: 2013. This uncertainty represents an expanded uncertainty expressed at approximately the 95% confidence level using a coverage factor of k=2.

Uncertainty Component	Tol (+-%)	Prob. Dist.	Div.	Ci (1g)	Ci (10g)	1g Ui (+-%)	10g Ui (+-%)	vi
<b>Measurement System</b>								
Probe calibration	5.831	N	1	1	1	5.83	5.83	∞
Axial Isotropy	0.695	R	$\sqrt{3}$	$\sqrt{0.5}$	$\sqrt{0.5}$	0.28	0.28	∞
Hemispherical Isotropy	1.045	R	$\sqrt{3}$	$\sqrt{0.5}$	$\sqrt{0.5}$	0.43	0.43	∞
Boundary effect	1.0	R	$\sqrt{3}$	1	1	0.58	0.58	∞
Linearity	0.685	R	$\sqrt{3}$	1	1	0.40	0.40	∞
System detection limits	1.0	R	$\sqrt{3}$	1	1	0.58	0.58	∞
Modulation response	3.0	R	$\sqrt{3}$	1	1	1.73	1.73	∞
Readout Electronics	0.021	N	1	1	1	0.021	0.021	∞
Response Time	0	R	$\sqrt{3}$	1	1	0	0	∞
Integration Time	1.4	R	$\sqrt{3}$	1	1	0.81	0.81	∞
RF ambient conditions-Noise	3.0	R	$\sqrt{3}$	1	1	1.73	1.73	∞
RF ambient conditions-reflections	3.0	R	$\sqrt{3}$	1	1	1.73	1.73	∞
Probe positioner mechanical tolerance	1.4	R	$\sqrt{3}$	1	1	0.81	0.81	∞
Probe positioning with respect to phantom shell	1.4	R	$\sqrt{3}$	1	1	0.81	0.81	∞
Post-processing	2.3	R	$\sqrt{3}$	1	1	1.33	1.33	∞
<b>Test sample Related</b>								
Test sample positioning	2.6	N	1	1	1	2.6	2.6	∞
Device holder uncertainty	3	N	1	1	1	3	3	∞
SAR drift measurement	5	R	$\sqrt{3}$	1	1	2.89	2.89	∞
SAR scaling	5	R	$\sqrt{3}$	1	1	2.89	2.89	∞
<b>Phantom and tissue parameters</b>								
Phantom uncertainty(shape and thickness uncertainty)	4	R	$\sqrt{3}$	1	1	2.31	2.31	∞
Uncertainty in SAR correction for deviations in permittivity and conductivity	1.9	N	1	1	0.84	1.90	1.60	∞
Liquid conductivity(temperature uncertainty)	2.5	R	$\sqrt{3}$	0.78	0.71	1.13	1.02	∞
Liquid conductivity(measured)	4	N	1	0.78	0.71	3.12	2.84	M
Liquid permittivity(temperature uncertainty)	2.5	R	$\sqrt{3}$	0.23	0.26	0.33	0.38	∞
Liquid permittivity(measured)	5	N	1	0.23	0.26	1.15	1.30	M
Combined Standard Uncertainty		RSS				9.79	9.59	
Expanded Uncertainty (95% Confidence interval)		K=2				19.58	19.18	





## 8.2 System validation Uncertainty

Uncertainty Component	Tol (+-%)	Prob. Dist.	Div.	Ci (1g)	Ci (10g)	1g Ui (+-%)	10g Ui (+-%)	vi
<b>Measurement System</b>								
Probe calibration	5.831	N	1	1	1	5.83	5.83	∞
Axial Isotropy	0.695	R	$\sqrt{3}$	1	1	0.40	0.40	∞
Hemispherical Isotropy	1.045	R	$\sqrt{3}$	0	0	0.00	0.00	∞
Boundary effect	1.0	R	$\sqrt{3}$	1	1	0.58	0.58	∞
Linearity	0.685	R	$\sqrt{3}$	1	1	0.40	0.40	∞
System detection limits	1.0	R	$\sqrt{3}$	1	1	0.58	0.58	∞
Modulation response	3.0	R	$\sqrt{3}$	0	0	0.00	0.00	∞
Readout Electronics	0.021	N	1	1	1	0.021	0.021	∞
Response Time	0.0	R	$\sqrt{3}$	0	0	0.00	0.00	∞
Integration Time	1.4	R	$\sqrt{3}$	0	0	0.00	0.00	∞
RF ambient conditions-Noise	3.0	R	$\sqrt{3}$	1	1	1.73	1.73	∞
RF ambient conditions-reflections	3.0	R	$\sqrt{3}$	1	1	1.73	1.73	∞
Probe positioner mechanical tolerance	1.4	R	$\sqrt{3}$	1	1	0.81	0.81	∞
Probe positioning with respect to phantom shell	1.4	R	$\sqrt{3}$	1	1	0.81	0.81	∞
Post-Processing	2.3	R	$\sqrt{3}$	1	1	1.33	1.33	∞
<b>System validation source</b>								
Deviation of experimental dipole from numerical dipole	5.0	N	1	1	1	5.00	5.00	∞
Input power and SAR drift measurement	5.0	R	$\sqrt{3}$	1	1	2.89	2.89	∞
Other source contribution Uncertainty	2.0	R	$\sqrt{3}$	1	1	1.15	1.15	∞
<b>Phantom and set-up</b>								
Phantom uncertainty(shape and thickness uncertainty)	4.0	R	$\sqrt{3}$	1	1	2.31	2.31	∞
Uncertainty in SAR correction for deviations in permittivity and conductivity	1.9	N	1	1	0.84	1.90	1.60	∞
Liquid conductivity(temperature uncertainty)	2.5	R	$\sqrt{3}$	0.78	0.71	1.13	1.02	∞
Liquid conductivity(measured)	4	N	1	0.78	0.71	3.12	2.84	M
Liquid permittivity(temperature uncertainty)	2.5	R	$\sqrt{3}$	0.23	0.26	0.33	0.38	∞
Liquid permittivity(measured)	5	N	1	0.23	0.26	1.15	1.30	M
Combined Standard Uncertainty		RSS				9.718	9.517	
Expanded Uncertainty (95% Confidence interval)		K=2				19.44	19.04	



## 9. Conducted Power Measurement

### Test Result

#### Analog

Frequency (MHz)	Channel	Max. Output Power (dBm)	Tune up power(dBm)
451.1875	1	30.033	$30 \pm 1$ dBm
461.0375	26	29.121	$29 \pm 1$ dBm
462.9125	50	29.096	$29 \pm 1$ dBm
469.5625	99	28.723	$28 \pm 1$ dBm



## 10. EUT And Test Setup Photo

### 10.1 EUT Photo

Front side

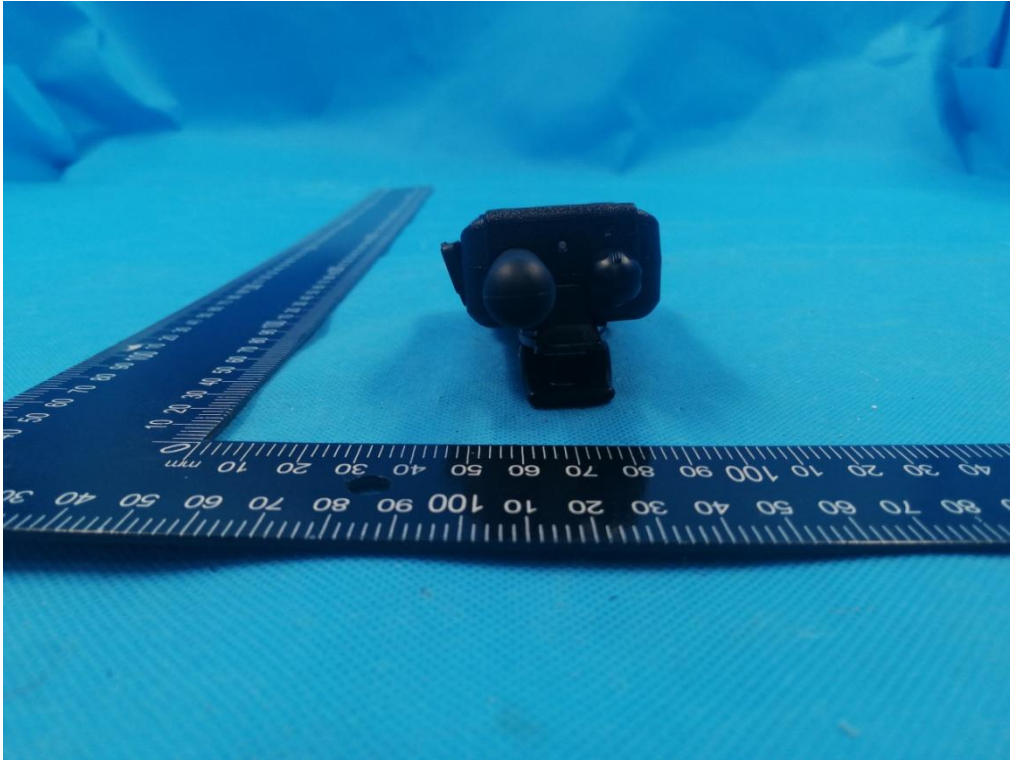


Back side

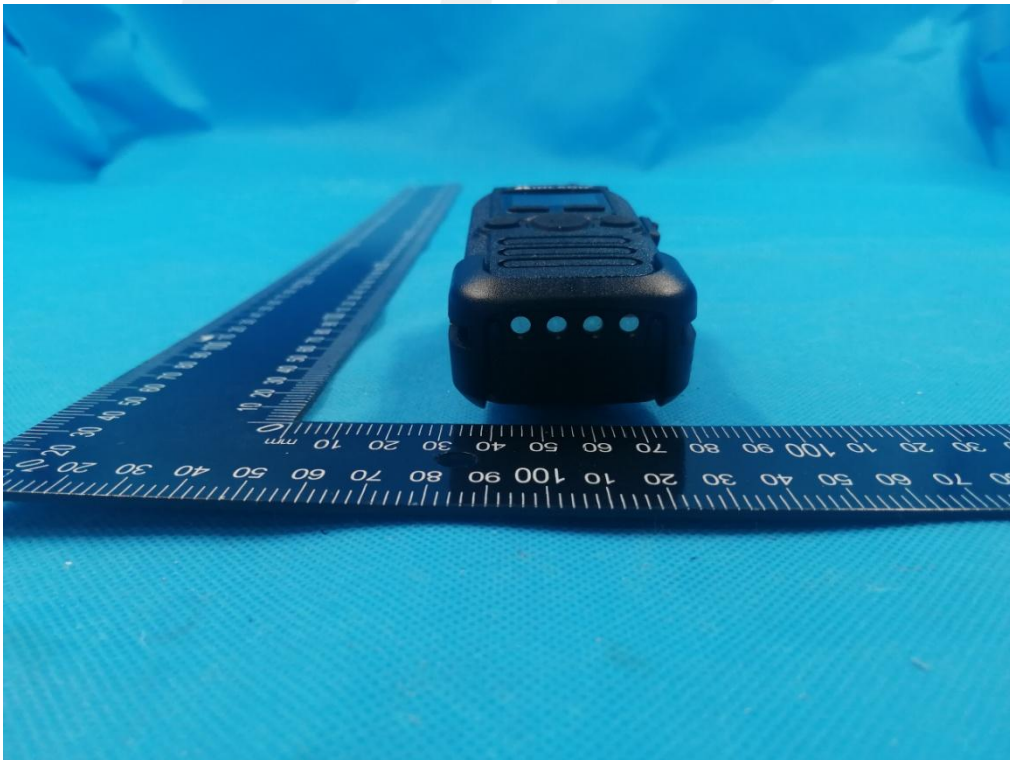




Top Edge



Bottom Edge



Left Edge

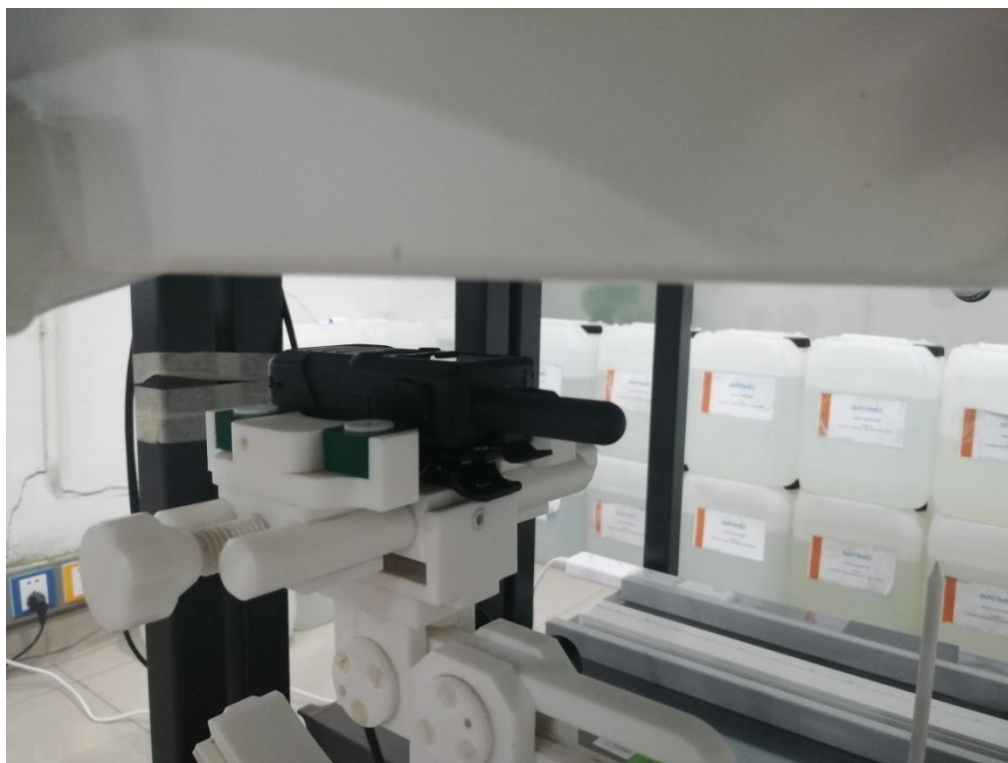


Right Edge

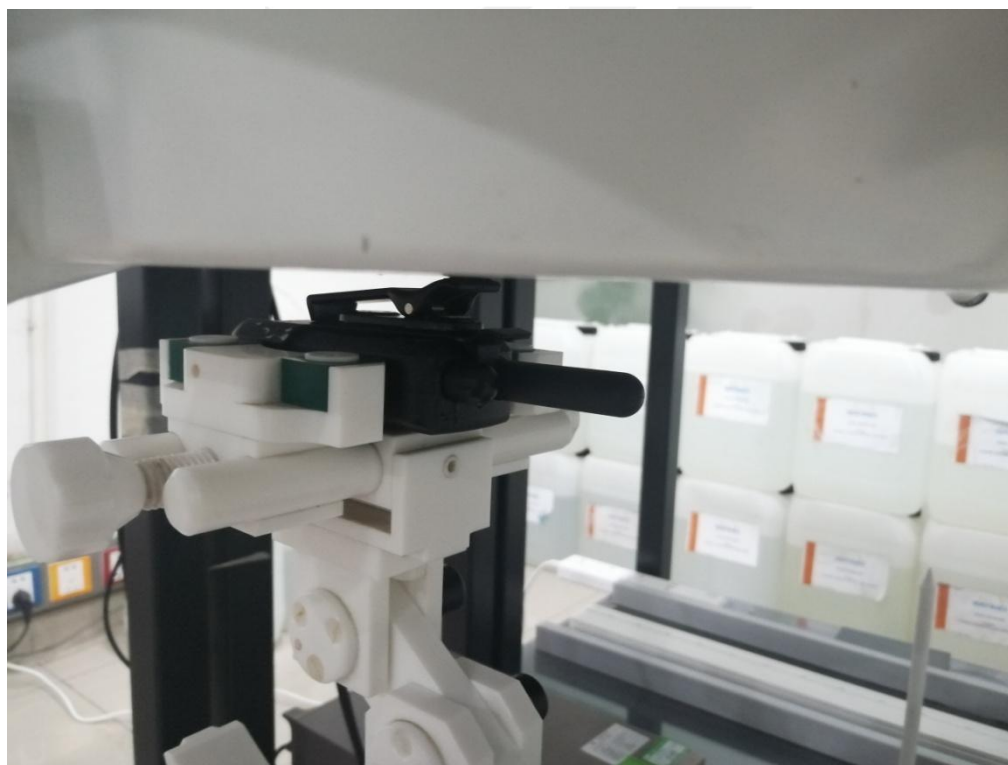


## 10.2 Setup Photo

Face up (separation distance is 25mm)



Body Back side (separation distance is 0mm)





Liquid depth (15 cm)





## 11. SAR Result Summary

Phantom Configurations	Frequency (MHz)	Power Drift(%)	SAR 1g with 100% duty cycle (W/Kg)	SAR 1g with 50% duty cycle (W/Kg)	Max. Tune-up Power (dBm)	Meas. output Power (dBm)	Scaling SAR (W/Kg)	Meas. No.
Face up	451.1875	1.53	2.060	1.030	31	30.033	<b>1.287</b>	1
Face up	461.0375	1.25	0.281	0.141	29	29.121	0.137	-
Face up	462.9125	3.30	0.267	0.134	29	29.096	0.131	-
Face up	469.5625	2.47	0.222	0.111	28	28.723	0.094	-
Back side	451.1875	-1.52	1.369	0.685	31	30.033	<b>0.856</b>	2
Back side	461.0375	-3.62	0.433	0.215	29	29.121	0.209	-
Back side	462.9125	1.63	0.378	0.189	29	29.096	0.185	-
Back side	469.5625	3.36	0.319	0.160	28	28.723	0.135	-

### Repeated SAR

Phantom Configurations	Frequency (MHz)	Power Drift(%)	SAR 1g with 100% duty cycle (W/Kg)	SAR 1g with 50% duty cycle (W/Kg)	Max. Tune-up Power (dBm)	Meas. output Power (dBm)	Scaling SAR (W/Kg)	Meas. No.
Face up	451.1875	0.36	1.975	0.988	31	30.033	1.234	-
Back side	451.1875	-0.40	1.347	0.674	31	30.033	0.842	-

### Repeated SAR measurement

Phantom Configurations	Frequency (MHz)	Original Measured SAR 1g(mW/g)	1 st Repeated SAR 1g	Ratio	Original Measured SAR 1g(mW/g)	2nd Repeated SAR 1g	Ratio
Face up	451.1875	2.060	1.975	1.043	-	-	-
Back side	451.1875	1.369	1.347	1.016	-	-	-

Note:

1. Per KDB 865664 D01, for each frequency band, repeated SAR measurement is required only when the measured SAR is  $\geq 0.8$ W/Kg.
2. Per KDB 865664 D01, if the ratio of largest to smallest SAR for the original and first repeated measurement is  $\leq 1.2$  and the measured SAR  $< 1.45$ W/Kg, only one repeated measurement is required.
3. Perform a second repeated measurement only if the ratio of largest to smallest SAR for the original and first repeated measurements is  $> 1.20$  or when the original or repeated measurement is  $\geq 1.45$ W/Kg
4. The ratio is the difference in percentage between original and repeated measured SAR.





## 12. Equipment List

Kind of Equipment	Manufacturer	Type No.	Serial No.	Last Calibration	Calibrated Until
450MHz Dipole	MVG	SID450	SN 30/14 DIP0G450-330	2020.07.14	2023.07.13
E-Field Probe	MVG	SSE2	SN 41/18 EPGO334	2020.07.14	2021.07.13
Dielectric Probe Kit	MVG	SCLMP	SN 32/14 OCPG67	2019.11.25	2020.11.24
Antenna	MVG	ANTA3	SN 07/13 ZNTA52	N/A	N/A
Phantom1	MVG	SAM	SN 32/14 SAM115	N/A	N/A
Phantom2	MVG	SAM	SN 32/14 SAM116	N/A	N/A
Phone holder	MVG	N/A	SN 32/14 MSH97	N/A	N/A
Laptop holder	MVG	N/A	SN 32/14 LSH29	N/A	N/A
Attenuator	Agilent	99899	DC-18GHz	N/A	N/A
Directional coupler	Narda	4226-20	3305	N/A	N/A
Network Analyzer	Agilent	8753ES	US38432810	2020.10.12	2021.10.11
Multi Meter	Keithley	Multi Meter 2000	4050073	2020.10.10	2021.10.09
Signal Generator	Agilent	N5182A	MY50140530	2020.10.10	2021.10.09
Wireless Communication Test Set	Agilent	8960-E5515C	MY48360751	2020.10.10	2021.10.09
Wireless Communication Test Set	R&S	CMW500	117239	2020.10.10	2021.10.09
Power Amplifier	DESAY	ZHL-42W	9638	2020.10.12	2021.10.11
Power Meter	R&S	NRP	100510	2020.10.10	2021.10.09
Power Meter	Agilent	E4418B	GB43312526	2020.10.10	2021.10.09
Power Sensor	R&S	NRP-Z11	101919	2020.10.10	2021.10.09
Power Sensor	Agilent	E9301A	MY41497725	2020.10.10	2021.10.09
Temperature hygrometer	SuWei	SW-108	N/A	2020.10.12	2021.10.11
Thermograph	Elitech	RC-4	S/N EF7176501537	2020.10.12	2021.10.11

**Note:**

Per KDB 865664 D01, Dipole SAR Validation Verification, STS LAB has adopted 3 years calibration intervals. On annual basis, every measurement dipole has been evaluated and is in compliance with the following criteria:

1. There is no physical damage on the dipole
2. System validation with specific dipole is within 10% of calibrated value

Return-loss in within 20% of calibrated measurement



## Appendix A. System Validation Plots

### System Performance Check Data (450MHz)

Type: Phone measurement (Complete)

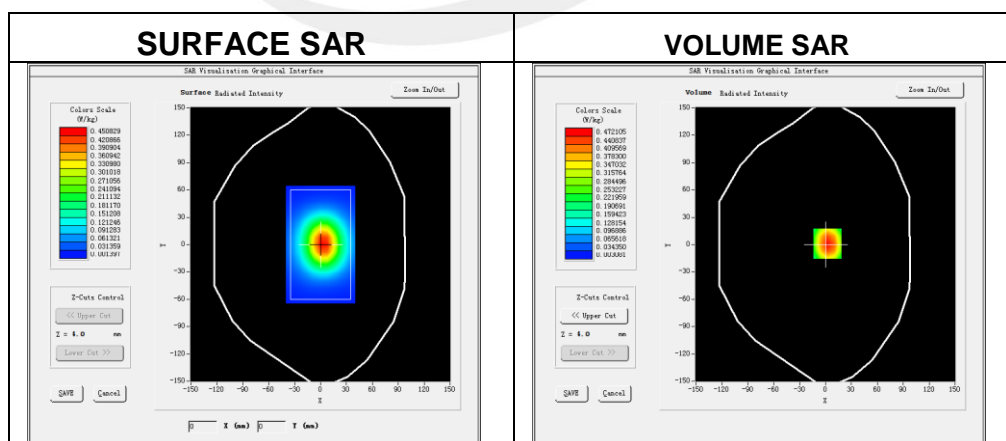
Area scan resolution: dx=8mm,dy=8mm

Zoom scan resolution: dx=8mm, dy=8mm, dz=5mm

Date of measurement: 2020-11-18

### Experimental conditions.

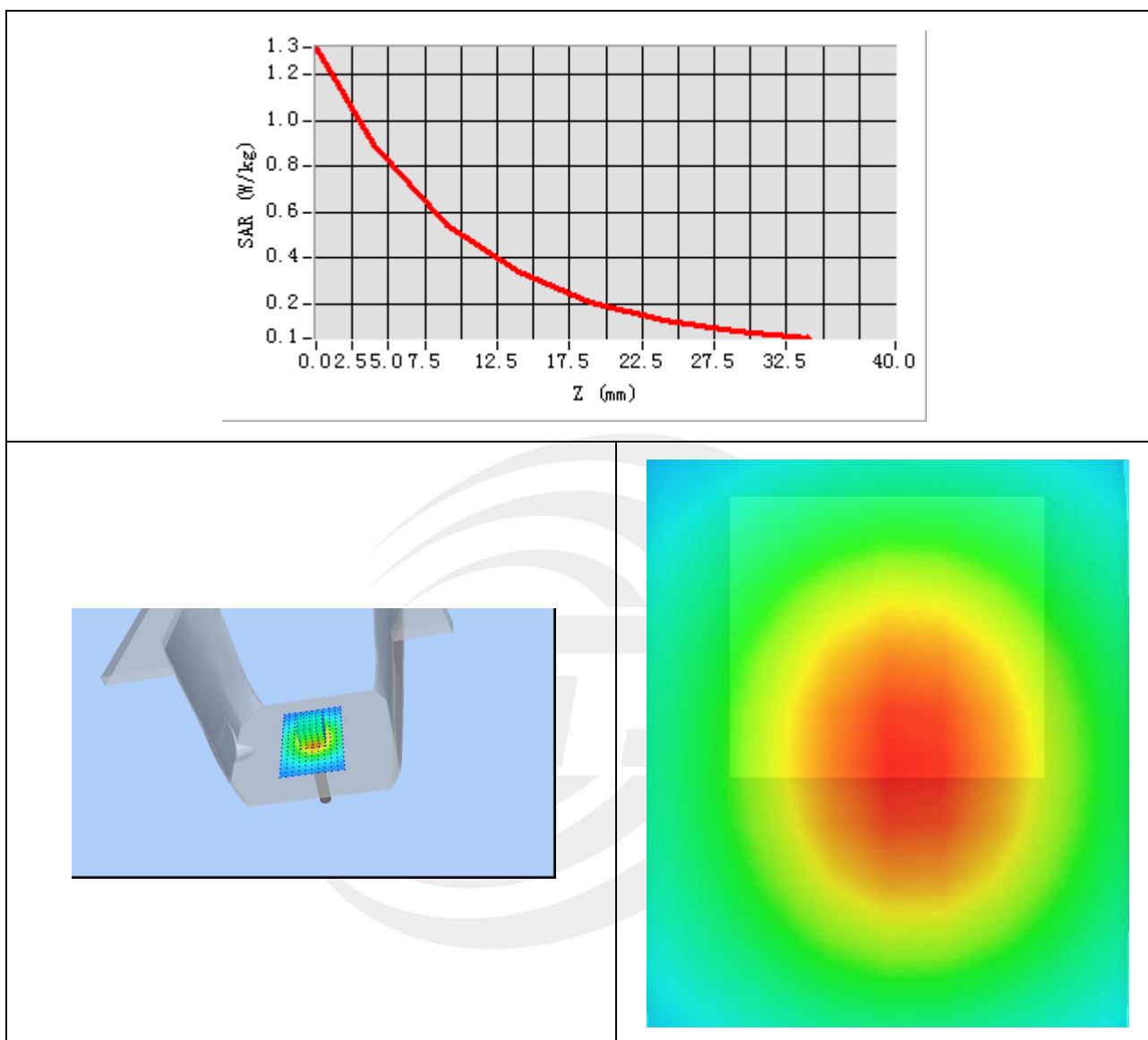
Probe	
Phantom	Validation plane
Device Position	-
Band	450MHz
Channels	-
Signal	CW
Frequency (MHz)	450MHz
Relative permittivity	43.63
Conductivity (S/m)	0.87
Power drift (%)	2.45
Probe	SN 41/18 EPGO334
ConvF:	1.42
Crest factor:	1:1



Maximum location: X=2.00, Y=0.00

SAR 10g (W/Kg)	0.335824
SAR 1g (W/Kg)	0.471045

## Z Axis Scan



## Appendix B. SAR Test Plots

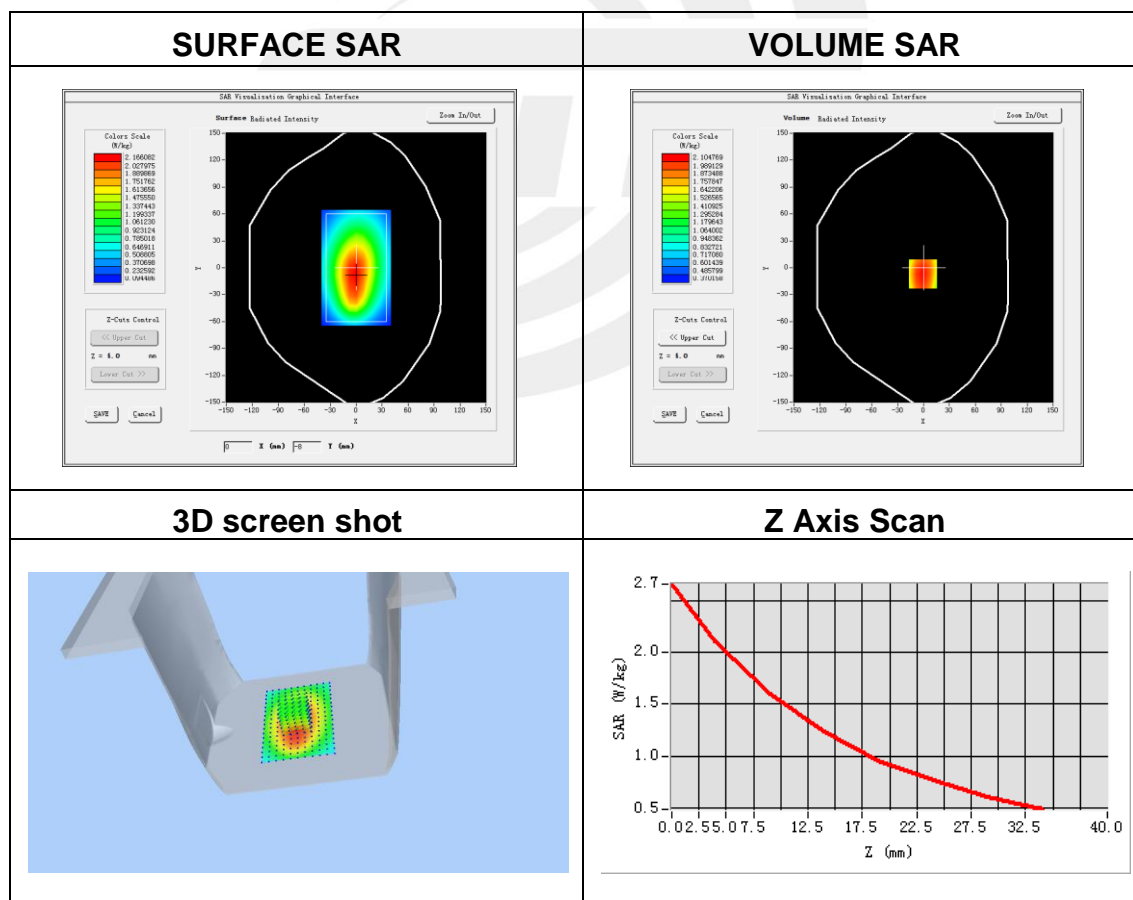
Plot 1: DUT: Handheld UHF Transceiver; EUT Model: BR180

Test Date	2020-11-18
Probe	SN 41/18 EPGO334
ConvF	1.42
Area Scan	dx=8mm dy=8mm, h= 5.00 mm
Zoom Scan	5x5x7,dx=8mm dy=8mm dz=5mm, Complete/ndx=8mm dy=8mm, h= 5.00 mm
Phantom	Validation plane
Device Position	Face up
Signal	Crest factor: 1.0
Frequency (MHz)	451.1875
Relative permittivity (real part)	43.63
Conductivity (S/m)	0.87

Maximum location: X=-1.00, Y=-7.00

SAR Peak: 2.67 W/kg

SAR 10g (W/Kg)	1.498037
SAR 1g (W/Kg)	2.060306



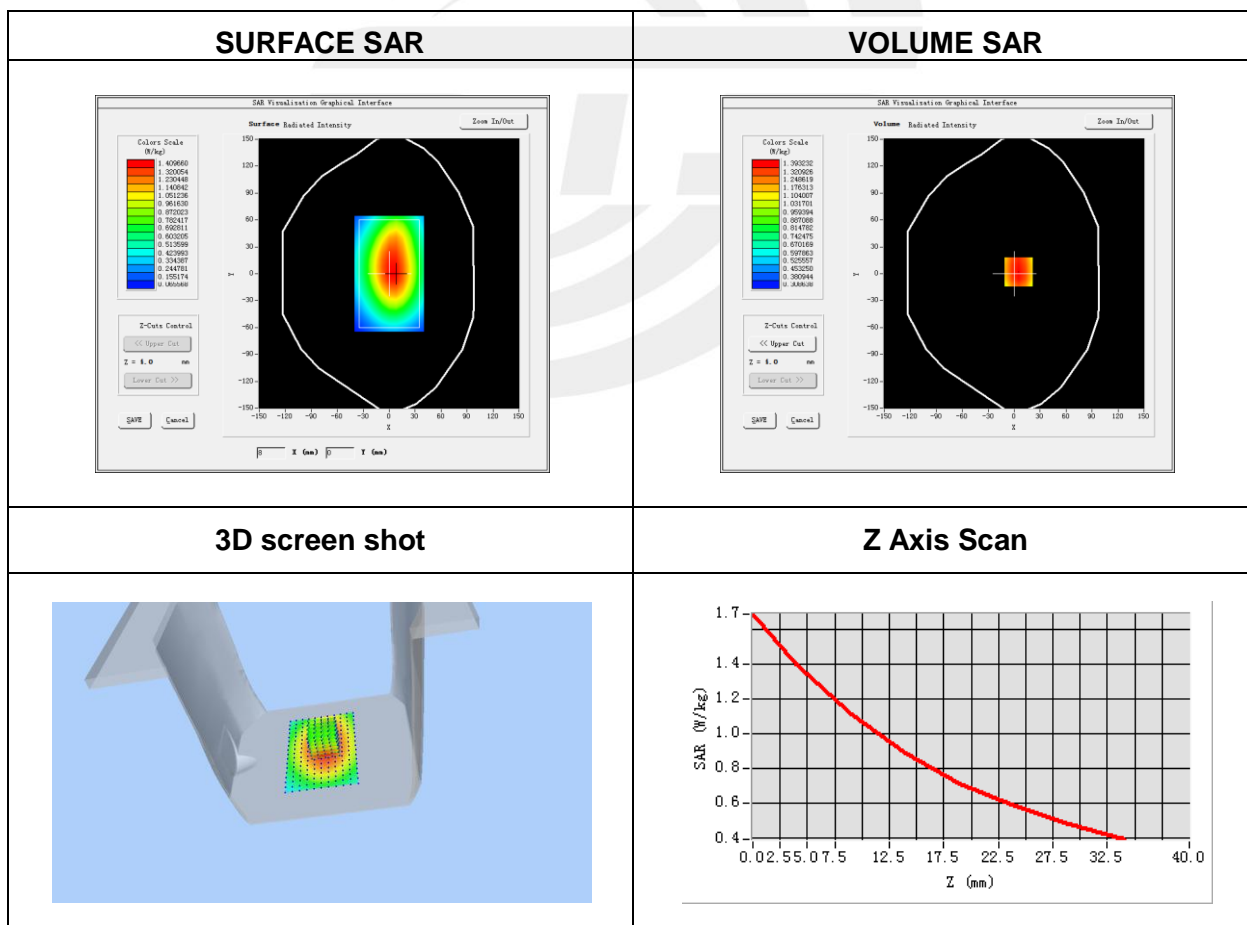
**Plot 2: DUT: Handheld UHF Transceiver; EUT Model: BR180**

Test Date	2020-11-18
Probe	SN 41/18 EPGO334
ConvF	1.45
Area Scan	dx=8mm dy=8mm, h= 5.00 mm
Zoom Scan	5x5x7,dx=8mm dy=8mm dz=5mm, Complete/ndx=8mm dy=8mm, h= 5.00 mm
Phantom	Validation plane
Device Position	Back side
Signal	Crest factor: 1.0
Frequency (MHz)	451.1875
Relative permittivity (real part)	43.63
Conductivity (S/m)	0.87

Maximum location: X=5.00, Y=2.00

SAR Peak: 1.71 W/kg

SAR 10g (W/Kg)	1.044305
SAR 1g (W/Kg)	1.369161





## Appendix C. Probe Calibration and Dipole Calibration Report

Refer the appendix Calibration Report.

※※※※END OF THE REPORT※※※※

