

FCC Part 95 Rules Test Report

Report No.: AGC03729180401FE10

FCC ID : MMA-T20
BRAND NAME : Midland
MODEL NAME : T20VP, T20, T20X4
CLIENT : Midland Radio Corporation
DATE OF ISSUE : Jun, 12,2018
STANDARD(S) : FCC Part 95 Rules
REPORT VERSION : V 1.2

Attestation of Global Compliance (Shenzhen) Co., Ltd

CAUTION:

This report shall not be reproduced except in full without the written permission of the test laboratory and shall not be quoted out of context.



The results shown in this test report refer only to the sample(s) tested unless otherwise stated and the sample(s) are retained for 30 days only. The document is issued by AGC, this document cannot be reproduced except in full with our prior written permission. The more details and the authenticity of the report will be confirmed at <http://www.agc-cert.com>.

Report Revise Record

Report Version	Revise Time	Issued Date	Valid Version	Notes
V1.0	/	May, 02,2018	Invalid	Original Report
V1.1	1st	Jun, 11,2018	Invalid	Update the comments.
V1.2	2nd	Jun, 12,2018	Valid	Update the comments.

The results shown in this test report refer only to the sample(s) tested unless otherwise stated and the sample(s) are retained for 30 days only. The document is issued by AGC, this document cannot be reproduced except in full with our prior written permission. The more details and the authenticity of the report will be confirmed at <http://www.agc-cert.com>.

VERIFICATION OF COMPLIANCE

Applicant:	Midland Radio Corporation
	5900 Parretta Drive Kansas City, Missouri United States 64120-2134
Manufacturer:	Midland Radio Corporation
	5900 Parretta Drive Kansas City, Missouri United States 64120-2134
Product Designation:	Two way radio
Brand Name:	Midland
Test Model	T20VP
Series Model	T20, T20X4
Declaration of Difference	Model T20VP with A headphone jack, model T20, T20X4 no headphone jack.
Date of Test:	Apr.28, 2018 to Jun, 11,2018

WE HEREBY CERTIFY THAT:

The above equipment was tested by Attestation of Global Compliance (Shenzhen) Co., Ltd. The data evaluation, test procedures, and equipment configurations shown in this report were made in accordance with the procedures given in ANSI/TIA- 603-E. The sample tested as described in this report is in compliance with the FCC Rules Part 95 requirements

The test results of this report relate only to the tested sample identified in this report.

Tested by


Steven Zhou(Zhou Pengyun) Jun, 11,2018

Reviewed by


Bart Xie(Xie Xiaobin)) Jun, 12,2018

The results shown in this test report refer only to the sample(s) tested unless otherwise stated and the sample(s) are retained for 30 days only. The document is issued by AGC, this document cannot be reproduced except in full with our prior written permission. The more details and the authenticity of the report will be confirmed at <http://www.agc-cert.com>.

TABLE OF CONTENTS

1. GENERAL INFORMATION	6
1.1 PRODUCT DESCRIPTION	6
1.2 RELATED SUBMITTAL(S) / GRANT (S).....	8
1.3 TEST METHODOLOGY.....	8
1.4 TEST FACILITY	8
1.5 SPECIAL ACCESSORIES.....	8
1.6 EQUIPMENT MODIFICATIONS.....	8
2. SYSTEM TEST CONFIGURATION.....	9
2.1 EUT CONFIGURATION	9
2.2 EUT EXERCISE	9
2.4 CONFIGURATION OF TESTED SYSTEM.....	10
3. SUMMARY OF TEST RESULTS.....	10
4. DESCRIPTION OF TEST MODES	12
5. FREQUENCY TOLERANCE	13
5.1 PROVISIONS APPLICABLE	13
5.2 MEASUREMENT PROCEDURE	13
5.3 TEST SETUP BLOCK DIAGRAM	14
5.4 TEST RESULT.....	15
6. EMISSION BANDWIDTH	16
6.1 PROVISIONS APPLICABLE	17
6.2 MEASUREMENT PROCEDURE	17
6.3 TEST SETUP BLOCK DIAGRAM	17
6.4 MEASUREMENT RESULT.....	18
7. UNWANTED RADIATION.....	20
7.1 PROVISIONS APPLICABLE	20
7.2 MEASUREMENT PROCEDURE	20
7.3 TEST SETUP BLOCK DIAGRAM	21
7.4 MEASUREMENT RESULTS:	22
7.5 EMISSION MASK PLOT	25
8. MAXIMUM TRANSMITTER POWER	27
8.1 PROVISIONS APPLICABLE	27
8.2 TEST PROCEDURE.....	27
8.3 TEST CONFIGURATION.....	27
8.4 TEST RESULT.....	28

The results shown in this test report refer only to the sample(s) tested unless otherwise stated and the sample(s) are retained for 30 days only. The document is issued by AGC, this document cannot be reproduced except in full with our prior written permission. The more details and the authenticity of the report will be confirmed at <http://www.agc-cert.com>.

9. MODULATION CHARACTERISTICS	30
9.1 PROVISIONS APPLICABLE	30
9.2 MEASUREMENT METHOD	30
9.3 MEASUREMENT RESULT	30
APPENDIX I: PHOTOGRAPHS OF SETUP	34
APPENDIX II: EXTERNAL VIEW OF EUT	35

The results shown in this test report refer only to the sample(s) tested unless otherwise stated and the sample(s) are retained for 30 days only. The document is issued by AGC, this document cannot be reproduced except in full with our prior written permission. The more details and the authenticity of the report will be confirmed at <http://www.agc-cert.com>.

1. GENERAL INFORMATION

1.1 PRODUCT DESCRIPTION

The EUT is a FRS Radio designed for voice communication. It is designed by way of utilizing the FM modulation achieves the system operating.

A major technical description of EUT is described as following:

Hardware Version	V1.4
Software Version	V1.0
Modulation	FM
Channel Separation	12.5KHz
Emission Type	11K0F3E
Emission Bandwidth	5.970KHz
Maximum Transmitter Power	26.52dBm
Rated Output power	0.5W (It was fixed by the manufacturer, any individual can't arbitrarily change it.)
Antenna Designation	Inseparable
Antenna Gain	1.5dBi
Power Supply	DC 4.8V, 600mAh (by battery)
Limiting Voltage	DC 4.08 V-5.52 V
Operation Frequency Range and Channel	FRS: 462.5625MHz -462.7250MHz 467.5625MHz -467.7125MHz Test Channel :4 and 11 channel
Frequency Tolerance	1.042ppm

The results shown in this test report refer only to the sample(s) tested unless otherwise stated and the sample(s) are retained for 30 days only. The document is issued by AGC, this document cannot be reproduced except in full with our prior written permission. The more details and the authenticity of the report will be confirmed at <http://www.agc-cert.com>.

Channel List:

Channel No.	Center frequency (MHz)
1	462.5625
2	462.5875
3	462.6125
4	462.6375
5	462.6625
6	462.6875
7	462.7125
8	467.5625
9	467.5875
10	467.6125
11	467.6375
12	467.6625
13	467.6875
14	467.7125
15	462.5500
16	462.5750
17	462.6000
18	462.6250
19	462.6500
20	462.6750
21	462.7000
22	462.7250

The results shown in this test report refer only to the sample(s) tested unless otherwise stated and the sample(s) are retained for 30 days only. The document is issued by AGC, this document cannot be reproduced except in full with our prior written permission. The more details and the authenticity of the report will be confirmed at <http://www.agc-cert.com>.

1.2 RELATED SUBMITTAL(S) / GRANT (S)

This submittal(s) (test report) is intended for FCC ID: MMA-T20, filing to comply with the FCC Part 95 requirements.

1.3 TEST METHODOLOGY.

The radiated emission testing was performed according to the procedures of TIA/EIA 603.

1.4 TEST FACILITY

Test Site	Attestation of Global Compliance (Shenzhen) Co., Ltd
Location	1-2F., Bldg.2, No.1-4, Chaxi Sanwei Technical Industrial Park, Gushu, Xixiang, Bao'an District B112-B113, Bldg.12, Baoan Bldg Materials Center, No.1 of Xixiang Inner Ring Road, Baoan District, Shenzhen 518012
NVLAP LAB CODE	600153-0
Designation Number	CN5028
FCC Test Firm Registration Number	682566
Description	Attestation of Global Compliance(Shenzhen) Co., Ltd is accredited by National Voluntary Laboratory Accreditation program, NVLAP Code 600153-0

1.5 SPECIAL ACCESSORIES

Not available for this EUT intended for grant.

1.6 EQUIPMENT MODIFICATIONS

Not available for this EUT intended for grant.

The results shown in this test report refer only to the sample(s) tested unless otherwise stated and the sample(s) are retained for 30 days only. The document is issued by AGC, this document cannot be reproduced except in full with our prior written permission. The more details and the authenticity of the report will be confirmed at <http://www.agc-cert.com>.

2. SYSTEM TEST CONFIGURATION

2.1 EUT CONFIGURATION

The EUT configuration for testing is installed on RF field strength measurement to meet the Commission's requirement and operating in a manner which intends to maximize its emission characteristics in a continuous normal application.

2.2 EUT EXERCISE

The Transmitter was operated in the normal operating mode. The TX frequency was fixed which was for the purpose of the measurements.

The results shown in this test report refer only to the sample(s) tested unless otherwise stated and the sample(s) are retained for 30 days only. The document is issued by AGC, this document cannot be reproduced except in full with our prior written permission. The more details and the authenticity of the report will be confirmed at <http://www.agc-cert.com>.

2.4 CONFIGURATION OF TESTED SYSTEM

Fig. 2-1 Configuration of Tested System



Table 2-1 Equipment Used in Tested System

Item	Equipment	Model No.	Identifier	Note
1	Two way radio	T20VP	FCC ID: MMA-T20	EUT

3. SUMMARY OF TEST RESULTS

FCC Rules	Description Of Test	Result
§ 95.567	Maximum Transmitter Power	Compliant
§ FCC part 2.1047 § 95.575	Modulation Characteristics	Compliant
§ FCC part 2.1049 § 95.573 § 95.579	Occupied Bandwidth and Emission Mask	Compliant
§ FCC Part 2.1055(d) § 95.565	Frequency Stability	Compliant
§ 95.579	Transmitter Radiated Spurious Emission	Compliant

The results shown in this test report refer only to the sample(s) tested unless otherwise stated and the sample(s) are retained for 30 days only. The document is issued by AGC, this document cannot be reproduced except in full with our prior written permission. The more details and the authenticity of the report will be confirmed at <http://www.agc-cert.com>.

LIST OF EQUIPMENTS USED

Equipment	Manufacturer	Model	S/N	Cal. Date	Cal. Due
TEST RECEIVER	R&S	ESCI	10096	Jun.20, 2017	Jun.19, 2018
EXA Signal Analyzer	Aglient	N9010A	MY53470504	Dec.08, 2017	Dec.07, 2018
Horn antenna	SCHWARZBECK	BBHA 9170	#768	Sep.20, 2017	Sep.19, 2018
preamplifier	ChengYi	EMC184045SE	980508	Sep.15, 2017	Sep.14, 2018
Double-Ridged Waveguide Horn	ETS LINDGREN	3117	00034609	May 18, 2017	May 17, 2019
Broadband Preamplifier	SCHWARZBECK	BBV 9718	9718-205	Jun.20, 2017	Jun.19, 2018
HORN ANTENNA	EM	EM-AH-10180	/	Mar.01, 2018	Feb.29, 2020
ANTENNA	SCHWARZBECK	VULB9168	VULB9168-494	Mar.01, 2018	Feb.29, 2020
ANTENNA	SCHWARZBECK	VULB9168	D69250	Sep.28, 2017	Sep.27, 2018
Small environmental tester	ESPEC	SH-242	--	Mar.02, 2018	Mar. 01, 2019
RF Communication Test Set	HP	HP8920B	--	Jun. 20, 2017	Jun. 19, 2018
Loop Antenna	A.H.Systems,Inc	SAS-562B	--	Mar. 01, 2018	Feb. 28, 2019

Note: 8920B can generate audio modulation frequency.

The results shown in this test report refer only to the sample(s) tested unless otherwise stated and the sample(s) are retained for 30 days only. The document is issued by AGC, this document cannot be reproduced except in full with our prior written permission. The more details and the authenticity of the report will be confirmed at <http://www.agc-cert.com>.

4. DESCRIPTION OF TEST MODES

RF TEST MODES

The EUT (Two way radio) has been tested under normal operating condition. (FRS TX) are chosen for testing at each channel separation.

No.	TEST MODES	CHANNEL SEPARATION
1	FRS TX	12.5 KHz

Note: Only the result of the worst case was recorded in the report.

The results shown in this test report refer only to the sample(s) tested unless otherwise stated and the sample(s) are retained for 30 days only. The document is issued by AGC, this document cannot be reproduced except in full with our prior written permission. The more details and the authenticity of the report will be confirmed at <http://www.agc-cert.com>.

5. FREQUENCY TOLERANCE

5.1 PROVISIONS APPLICABLE

Standard Applicable [Part 95.565] The carrier frequency stability is the ability of the transmitter to maintain an assigned carrier frequency.

FCC Part 95.565,

FRS: The carrier frequency tolerance shall be better than ± 2.5 ppm.

5.2 MEASUREMENT PROCEDURE

5.2.1 Frequency stability versus environmental temperature

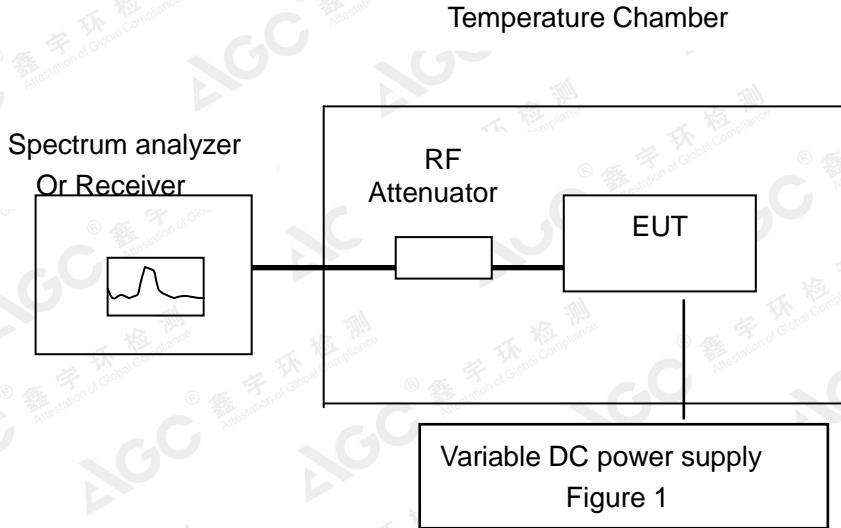
1. Setup the configuration per figure 1 for frequencies measurement inside an environment chamber, Install new battery in the EUT.
2. Turn on EUT and set SA center frequency to the EUT radiated frequency. Set SA Resolution Bandwidth to 1KHz and Video Resolution Bandwidth to 1KHz and Frequency Span to 50KHz. Record this frequency as reference frequency.
3. Set the temperature of chamber to 50°C. Allow sufficient time (approximately 30 min) for the temperature of the chamber to stabilize. While maintaining a constant temperature inside the chamber, turn the EUT on and measure the EUT operating frequency.
4. Repeat step 2 with a 10°C decreased per stage until the lowest temperature -30°C is measured, record all measured frequencies on each temperature step.

5.2.2 Frequency stability versus input voltage

1. Setup the configuration per figure 1 for frequencies measured at temperature if it is within 15°C to 25°C. Otherwise, an environment chamber set for a temperature of 20°C shall be used. The EUT shall be powered by DC 4.8V.
2. Set SA center frequency to the EUT radiated frequency. Set SA Resolution Bandwidth to 1 KHz and Video Resolution Bandwidth to 1KHz. Record this frequency as reference frequency.
3. Supply the EUT primary voltage at the operating end point which is specified by manufacturer and record the frequency.

The results shown in this test report refer only to the sample(s) tested unless otherwise stated and the sample(s) are retained for 30 days only. The document is issued by AGC, this document cannot be reproduced except in full with our prior written permission. The more details and the authenticity of the report will be confirmed at <http://www.agc-cert.com>.

5.3 TEST SETUP BLOCK DIAGRAM



The results shown in this test report refer only to the sample(s) tested unless otherwise stated and the sample(s) are retained for 30 days only. The document is issued by AGC, this document cannot be reproduced except in full with our prior written permission. The more details and the authenticity of the report will be confirmed at <http://www.agc-cert.com>.

5.4 TEST RESULT

(1) Frequency stability versus input voltage (Supply nominal voltage is 4.80V)

Environment Temperature(°C)	Power (V)	Reference Frequency		Limit: ppm
		462.6375MHz	467.6375MHz	
50	DC 4.80	0.918	0.527	±2.5for FRS
40	DC 4.80	0.875	0.759	
30	DC 4.80	0.759	0.653	
20	DC 4.80	0.863	0.649	
10	DC 4.80	0.742	0.851	
0	DC 4.80	0.619	0.775	
-10	DC 4.80	0.557	0.649	
-20	DC 4.80	0.726	0.735	
-30	DC 4.80	0.882	0.826	
Result	Pass			

(2) Frequency stability versus input voltage (Battery limiting voltage is 4.08V)

Environment Temperature(°C)	Power (V)	Reference Frequency		Limit: ppm
		462.6375MHz	467.6375MHz	
50	DC 4.08	0.719	0.859	±2.5for FRS
40	DC 4.08	0.875	0.775	
30	DC 4.08	0.984	0.648	
20	DC 4.08	0.663	0.892	
10	DC 4.08	0.818	0.984	
0	DC 4.08	0.795	0.568	
-10	DC 4.08	0.768	0.859	
-20	DC 4.08	0.675	0.761	
-30	DC 4.08	0.542	0.764	
Result	Pass			

(3) Frequency stability versus input voltage (Battery Fully Charged voltage is 5.52V)

Environment Temperature(°C)	Power (V)	Reference Frequency		Limit: ppm
		462.6375MHz	467.6375MHz	
50	DC 5.52	0.719	0.749	±2.5for FRS
40	DC 5.52	0.875	0.875	
30	DC 5.52	0.984	0.581	
20	DC 5.52	0.734	0.638	
10	DC 5.52	0.856	1.042	
0	DC 5.52	0.686	0.761	
-10	DC 5.52	0.519	0.986	
-20	DC 5.52	0.858	0.575	
-30	DC 5.52	0.969	0.559	
Result	Pass			

The results shown in this test report refer only to the sample(s) tested unless otherwise stated and the sample(s) are retained for 30 days only. The document is issued by AGC, this document cannot be reproduced except in full with our prior written permission. The more details and the authenticity of the report will be confirmed at <http://www.agc-cert.com>.

(4) Frequency stability versus input voltage (Battery end point voltage is 3.8V)

Environment Temperature(°C)	Power (V)	Reference Frequency		Limit: ppm
		462.6375MHz	467.6375MHz	
50	DC 3.80	0.885	0.686	±2.5for FRS
40	DC 3.80	0.726	0.875	
30	DC 3.80	0.849	0.784	
20	DC 3.80	0.718	0.575	
10	DC 3.80	0.651	0.849	
0	DC 3.80	0.728	0.825	
-10	DC 3.80	0.642	0.719	
-20	DC 3.80	0.516	0.642	
-30	DC 3.80	0.819	0.961	
Result	Pass			

The results shown in this test report refer only to the sample(s) tested unless otherwise stated and the sample(s) are retained for 30 days only. The document is issued by AGC, this document cannot be reproduced except in full with our prior written permission. The more details and the authenticity of the report will be confirmed at <http://www.agc-cert.com>.

6. EMISSION BANDWIDTH

6.1 PROVISIONS APPLICABLE

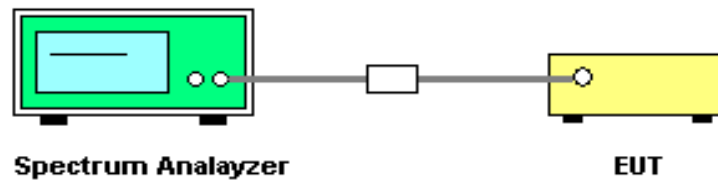
FCC Part 95.573: FRS: The authorized bandwidth for an FRS unit is 12.5 kHz.

Occupied Bandwidth (Section 2.1049, 95.573): The EUT was connected to the audio signal generator and the spectrum analyzer via the main RF connector, and through an appropriate attenuator. The EUT was controlled to transmit its maximum power. Then the bandwidth of 99% power can be measured by the spectrum analyzer.

6.2 MEASUREMENT PROCEDURE

- 1). The EUT was modulated by 2.5 KHz Sine wave audio signal, The level of the audio signal employed is 16 dB greater than that necessary to produce 50% of rated system deviation. Rated system deviation is 2.5 kHz (12.5 kHz channel spacing).
- 2). Set SPA Center Frequency = fundamental frequency, RBW=100Hz.VBW= 300 Hz, Span =50 KHz.
- 3). Set SPA Max hold. Mark peak, -26 dB.

6.3 TEST SETUP BLOCK DIAGRAM

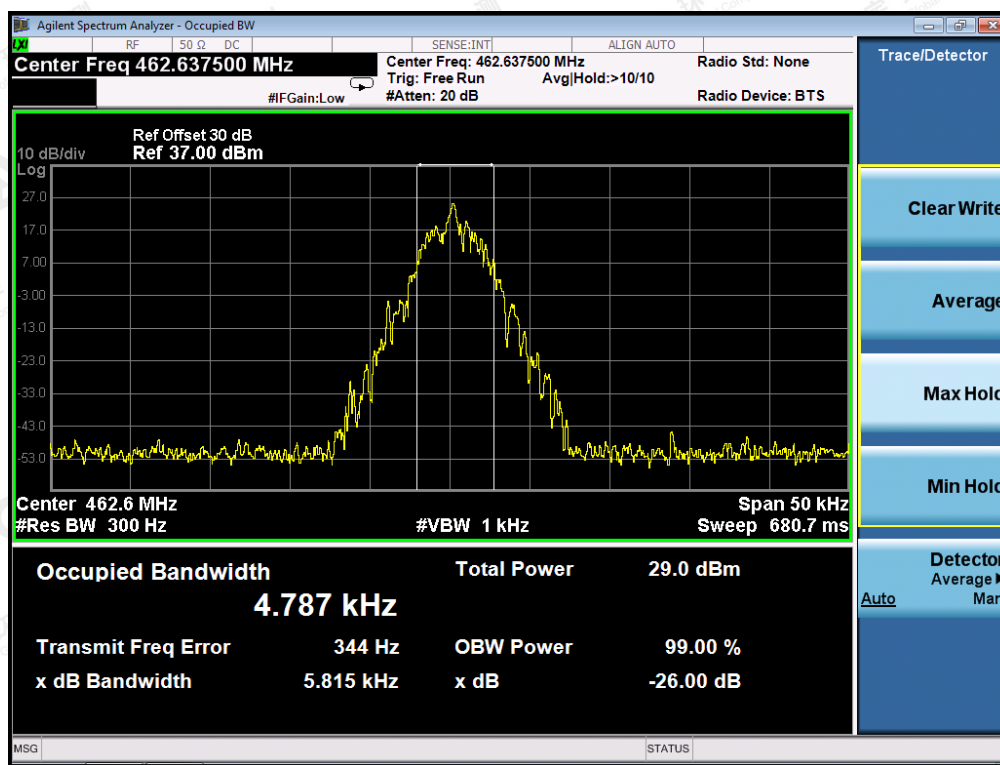


The results shown in this test report refer only to the sample(s) tested unless otherwise stated and the sample(s) are retained for 30 days only. The document is issued by AGC, this document cannot be reproduced except in full with our prior written permission. The more details and the authenticity of the report will be confirmed at <http://www.agc-cert.com>.

6.4 MEASUREMENT RESULT

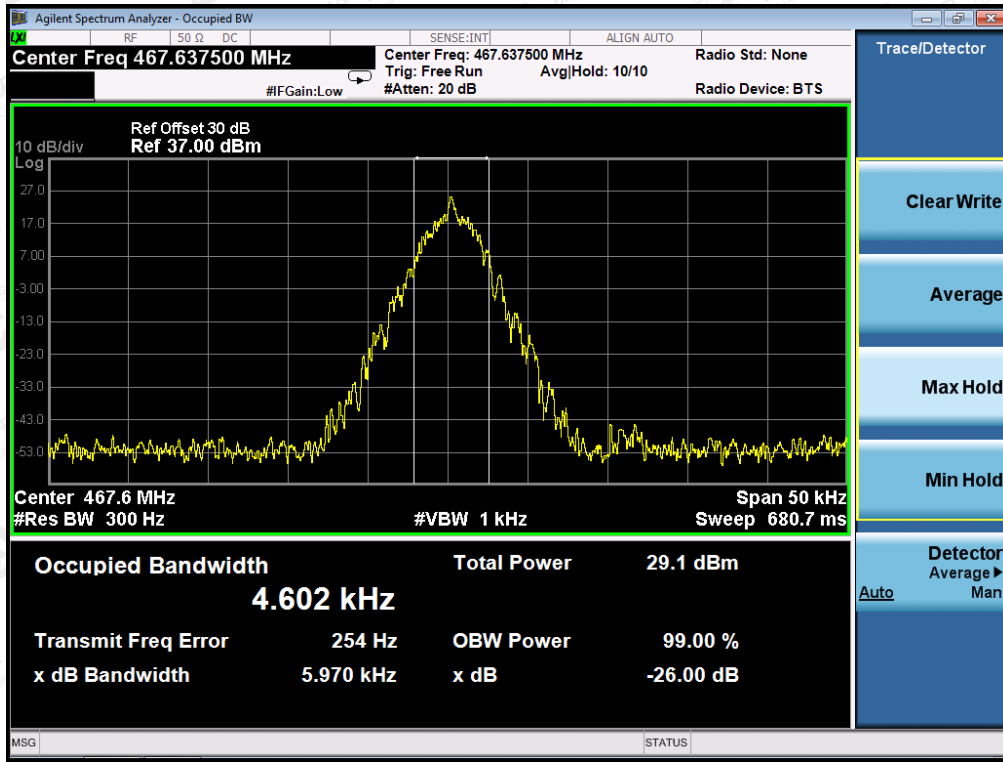
26 dB Bandwidth Measurement Result			
Operating Frequency	12.5 KHz Channel Separation		
	Test Data	Limits	Result
462.6375MHz	5.815KHz	12.5 KHz	Pass
467.6375MHz	5.970KHz	12.5 KHz	Pass

Occupied bandwidth of 462.6375MHz



The results shown in this test report refer only to the sample(s) tested unless otherwise stated and the sample(s) are retained for 30 days only. The document is issued by AGC, this document cannot be reproduced except in full with our prior written permission. The more details and the authenticity of the report will be confirmed at <http://www.agc-cert.com>.

Occupied bandwidth of 467.6375MHz



The results shown in this test report refer only to the sample(s) tested unless otherwise stated and the sample(s) are retained for 30 days only. The document is issued by AGC, this document cannot be reproduced except in full with our prior written permission. The more details and the authenticity of the report will be confirmed at <http://www.agc-cert.com>.

7. UNWANTED RADIATION

7.1 PROVISIONS APPLICABLE

Standard Applicable [FCC Part 95.579]

According to FCC section 95.579, the unwanted emission should be attenuated below TP by at least $43+10 \log(\text{Transmit Power})$ dB.

7.2 MEASUREMENT PROCEDURE

- (1) On a test site, the EUT shall be placed on a turntable, and in the position closest to the normal use as declared by the user.
- (2) The test antenna shall be oriented initially for vertical polarization located 3m from the EUT to correspond to the transmitter.
- (3) The output of the antenna shall be connected to the measuring receiver and either a peak or quasi-peak detector was used for the measurement as indicated on the report. The detector selection is based on how close the emission level was approaching the limit.
- (4) The transmitter shall be switched on; if possible, without the modulation and the measurement receiver shall be tuned to the frequency of the transmitter under test.
- (5) The test antenna shall be raised and lowered through the specified range of height until the measuring receiver detects a maximum signal level.
- (6) The transmitter shall then be rotated through 360° in the horizontal plane, until the maximum signal level is detected by the measuring receiver.
- (7) The test antenna shall be raised and lowered again through the specified range of height until the measuring receiver detects a maximum signal level.

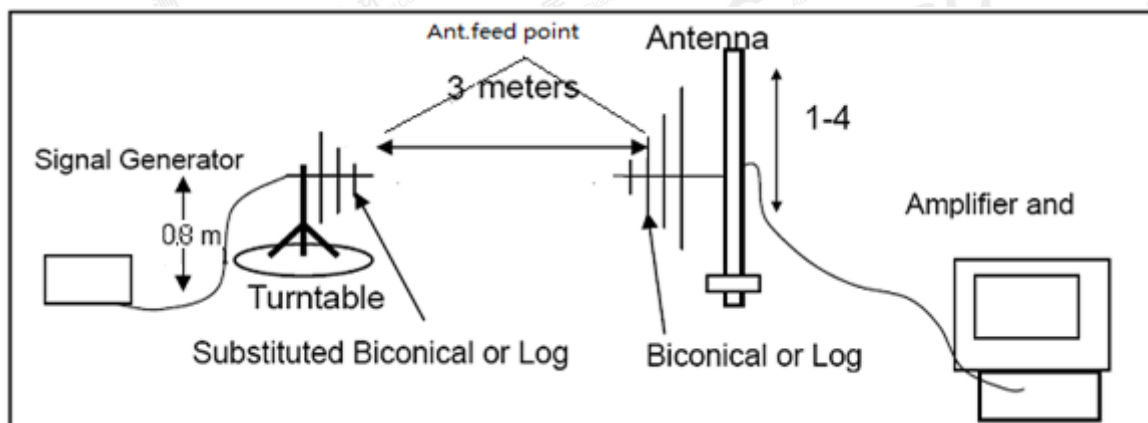
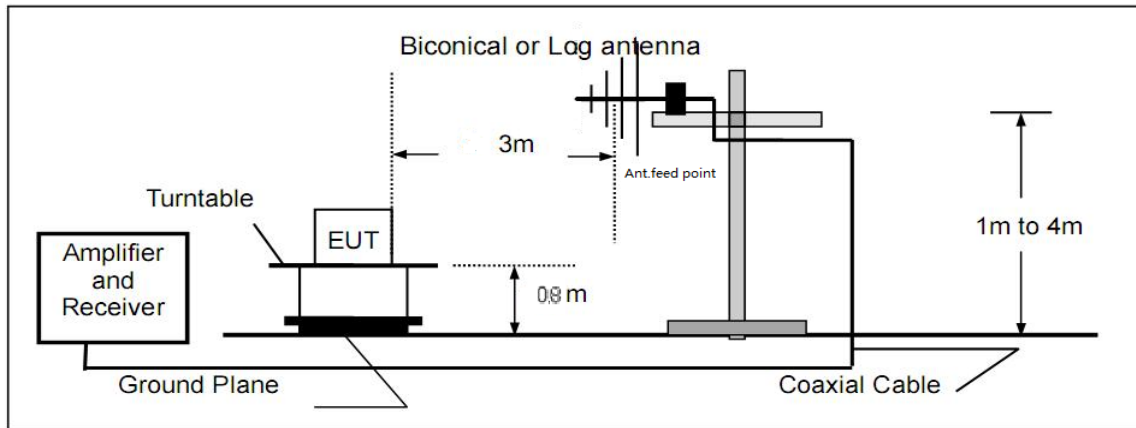
- (8) The maximum signal level detected by the measuring receiver shall be noted.
- (9) The measurement shall be repeated with the test antenna set to horizontal polarization.
- (10) Replace the antenna with a proper Antenna (substitution antenna).
- (11) The substitution antenna shall be oriented for vertical polarization and, if necessary, the length of the substitution antenna shall be adjusted to correspond to the frequency of transmitting.
- (12) The substitution antenna shall be connected to a calibrated signal generator.
- (13) If necessary, the input attenuator setting of the measuring receiver shall be adjusted in order to increase the sensitivity of the measuring receiver.
- (14) The test antenna shall be raised and lowered through the specified range of the height to ensure that the maximum signal is received.
- (15) The input signal to substitution antenna shall be adjusted to the level that produces a level detected by the measuring receiver, that is equal to the level noted while the transmitter radiated power was measured, corrected for the change of input attenuation setting of the measuring receiver.
- (16) The input level to the substitution antenna shall be recorded as power level in dBm, corrected for any change of input attenuator setting of the measuring receiver.
- (17) The measurement shall be repeated with the test antenna and the substitution antenna oriented for horizontal polarization.

The results shown in this test report refer only to the sample(s) tested unless otherwise stated and the sample(s) are retained for 30 days only. The document is issued by AGC, this document cannot be reproduced except in full with our prior written permission. The more details and the authenticity of the report will be confirmed at <http://www.agc-cert.com>.

7.3 TEST SETUP BLOCK DIAGRAM

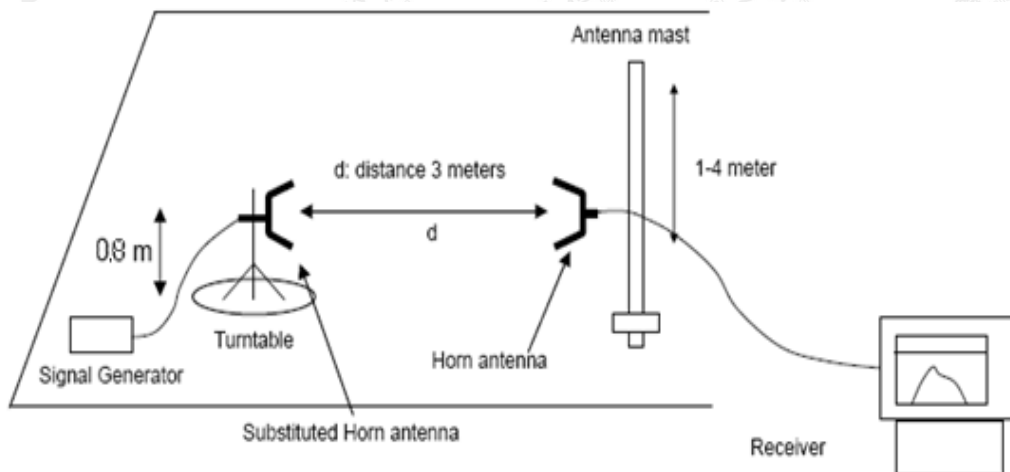
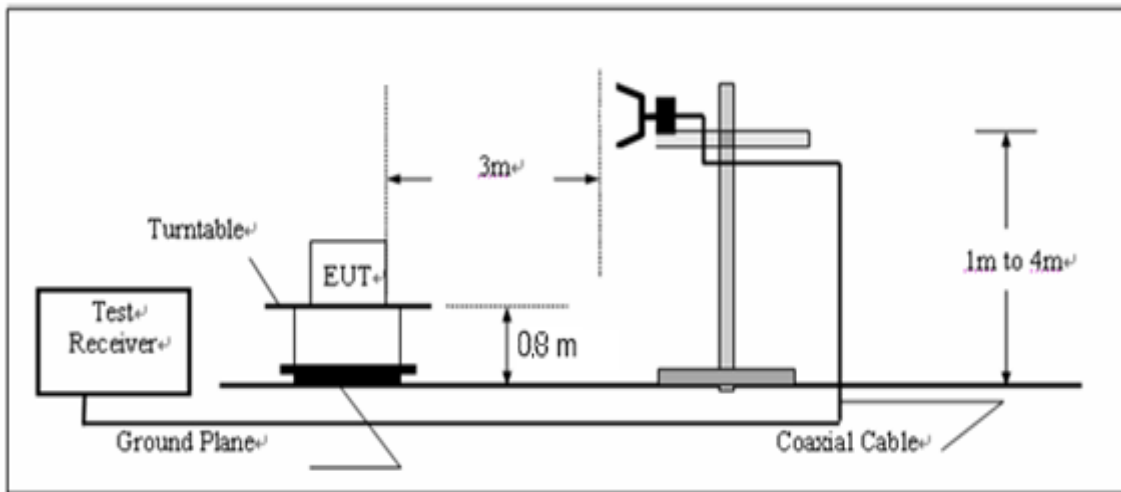
SUBSTITUTION METHOD: (Radiated Emissions)

Radiated Below 1GHz



Radiated Above 1 GHz

The results shown in this test report refer only to the sample(s) tested unless otherwise stated and the sample(s) are retained for 30 days only. The document is issued by AGC, this document cannot be reproduced except in full with our prior written permission. The more details and the authenticity of the report will be confirmed at <http://www.agc-cert.com>.



7.4 MEASUREMENT RESULTS:

the unwanted emission should be attenuated below TP by at least $43+10 \log(\text{Transmit Power})$ dB

Limit: At least $43+10 \log(P) = 43+10 \log(0.5) = 40$ (dBc) $27-40 = -13$ dBm

NOTE: In the actual test, with the Walkie-talkie headphones.

The results shown in this test report refer only to the sample(s) tested unless otherwise stated and the sample(s) are retained for 30 days only. The document is issued by AGC, this document cannot be reproduced except in full with our prior written permission. The more details and the authenticity of the report will be confirmed at <http://www.agc-cert.com>.

Measurement Result for 12.5 KHz Channel Separation @ 462.6375MHz

Emission Frequency (MHz)	Ant. Polarity(H/V)	Measurement Result (dBm)	Limit (dBm)	Result(P/F)
462.638	H	0		pass
925.275	H	-49.8	-13	pass
1387.91	H	-40.8	-13	pass
1850.550	H	-45.6	-13	pass
2313.188	H	-36.6	-13	pass
2775.825	H	-45.4	-13	pass
3238.463	H	-50.2	-13	pass
3701.100	H	-49.6	-13	pass
4163.738	H	-48.6	-13	pass
4626.375	H	-49.3	-13	pass

Emission Frequency (MHz)	Ant. Polarity(H/H)	Measurement Result (dBm)	Limit (dBm)	Result(P/F)
462.638	V	0		pass
925.275	V	-50.3	-13	pass
1387.91	V	-50.6	-13	pass
1850.550	V	-49.8	-13	pass
2313.188	V	-42.8	-13	pass
2775.825	V	-47.8	-13	pass
3238.463	V	-48.1	-13	pass
3701.100	V	-50.2	-13	pass
4163.738	V	-49.3	-13	pass
4626.375	V	-50.8	-13	pass

Measurement Result for 12.5 KHz Channel Separation @ 467.6375MHz

Emission Frequency (MHz)	Ant. Polarity(H/V)	Measurement Result (dBm)	Limit (dBm)	Result(P/F)
467.638	H	0		pass
935.275	H	-49.2	-13	pass
1402.913	H	-42.4	-13	pass
1870.550	H	-43.7	-13	pass
2338.188	H	-40.6	-13	pass
2805.825	H	-42.1	-13	pass
3273.463	H	-48.3	-13	pass
3741.100	H	-49.4	-13	pass
4208.738	H	-48.2	-13	pass
4676.375	H	-50.7	-13	pass

The results shown in this test report refer only to the sample(s) tested unless otherwise stated and the sample(s) are retained for 30 days only. The document is issued by AGC, this document cannot be reproduced except in full with our prior written permission. The more details and the authenticity of the report will be confirmed at <http://www.agc-cert.com>.

Emission Frequency (MHz)	Ant. Polarity(H/V)	Measurement Result (dBm)	Limit (dBm)	Result(P/F)
467.638	V	0		pass
935.275	V	-50.5	-13	pass
1402.913	V	-49.2	-13	pass
1870.550	V	-49.3	-13	pass
2338.188	V	-50.5	-13	pass
2805.825	V	-51.6	-13	pass
3273.463	V	-49.7	-13	pass
3741.100	V	-50.5	-13	pass
4208.738	V	-46.3	-13	pass
4676.375	V	-48.1	-13	pass

The results shown in this test report refer only to the sample(s) tested otherwise stated and the sample(s) are retained for 30 days only. The document is issued by AGC, this document cannot be reproduced except in full with our prior written permission. The more details and the authenticity of the report will be confirmed at <http://www.agc-cert.com>.

7.5 EMISSION MASK PLOT

Standard Applicable [FCC Part 95.579] FRS: Unwanted emissions shall be attenuated below the unmodulated carrier power in accordance with the following:

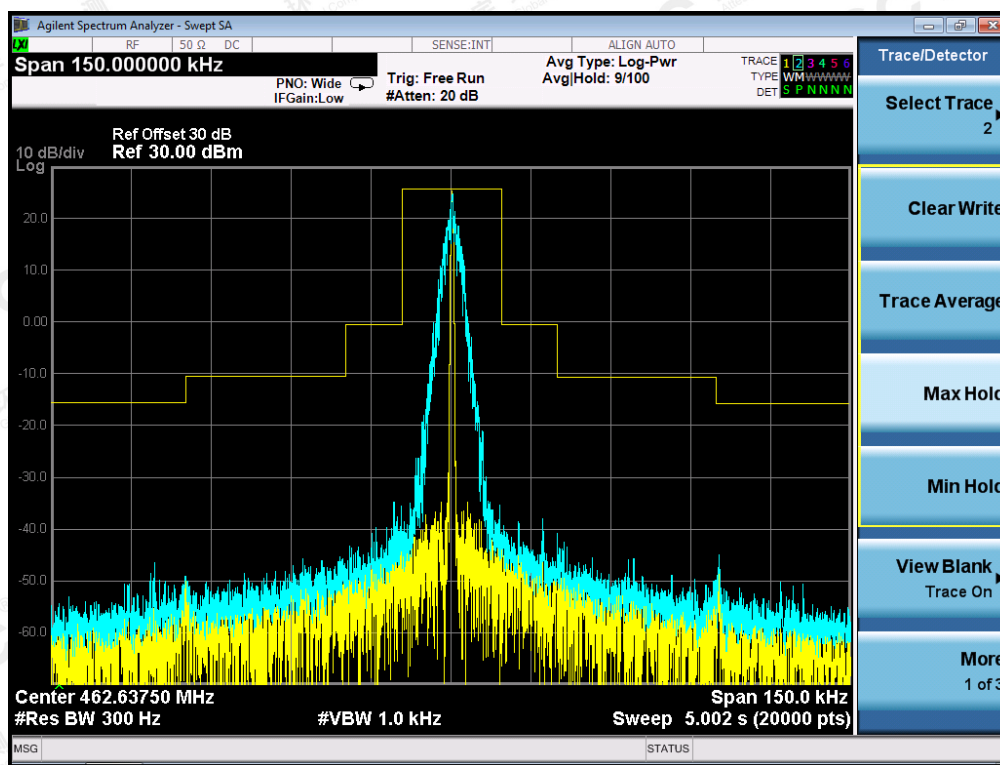
- (1) At least 25 dB (decibels) on any frequency removed from the center of the authorized bandwidth by more than 50 % up to and including 100% of the authorized bandwidth.
- (2) At least 35 dB on any frequency removed from the center of the authorized bandwidth by more than 100 % up to and including 250 % of the authorized bandwidth.
- (3) At least $43 + 10 \log_{10}(T)$ dB on any frequency removed from the center of the authorized bandwidth by more than 250 %.

The detailed procedure employed for Emission Mask measurements are specified as following:

- The transmitter shall be modulated by a 2.5 kHz audio signal,
- The level of the audio signal employed is 16 dB greater than that necessary to produce 50% of rated system deviation. Rated system deviation is 2.5 kHz.

Channel 1:

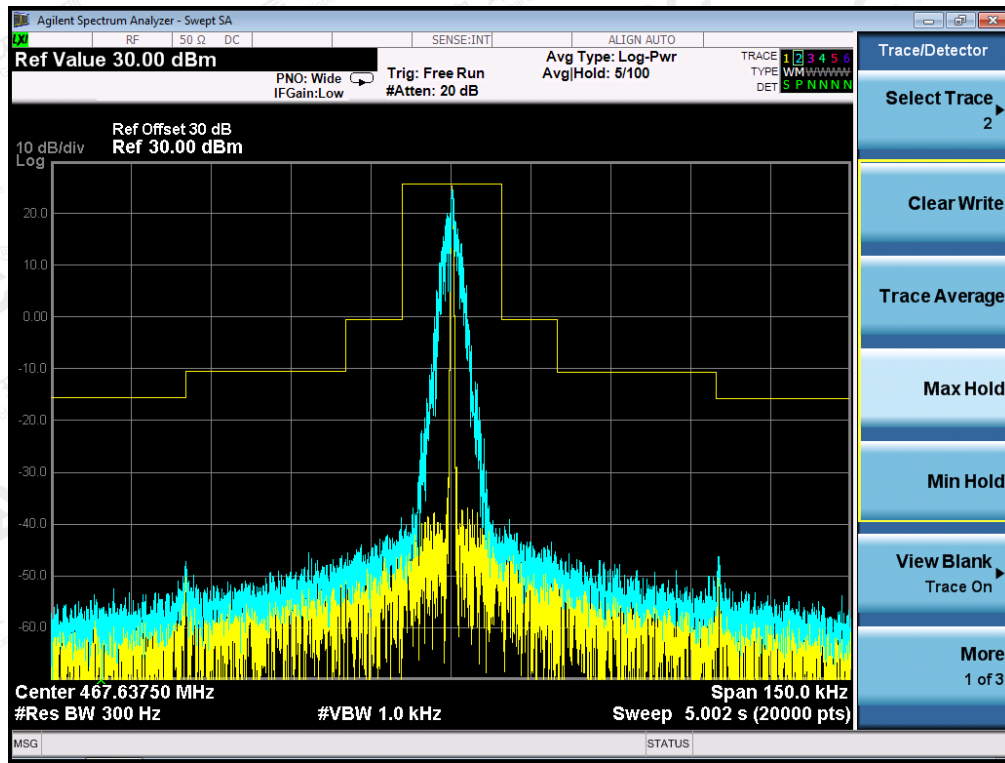
The Worst Emission Mask for channel 4



The results shown in this test report refer only to the sample(s) tested unless otherwise stated and the sample(s) are retained for 30 days only. The document is issued by AGC, this document cannot be reproduced except in full with our prior written permission. The more details and the authenticity of the report will be confirmed at <http://www.agc-cert.com>.

CHANNEL 11:

The Worst Emission Mask for channel 11



The results shown in this test report refer only to the sample(s) tested unless otherwise stated and the sample(s) are retained for 30 days only. The document is issued by AGC, this document cannot be reproduced except in full with our prior written permission. The more details and the authenticity of the report will be confirmed at <http://www.agc-cert.com>.

8. MAXIMUM TRANSMITTER POWER

8.1 PROVISIONS APPLICABLE

Per FCC §2.1046 and §95.567: Maximum ERP is dependent upon the station's antenna HAAT and required service area.

FCC Part 95.567 For FRS, the maximum permissible transmitter output power under any operating conditions is 0.5W effective radiated power (e.r.p.).

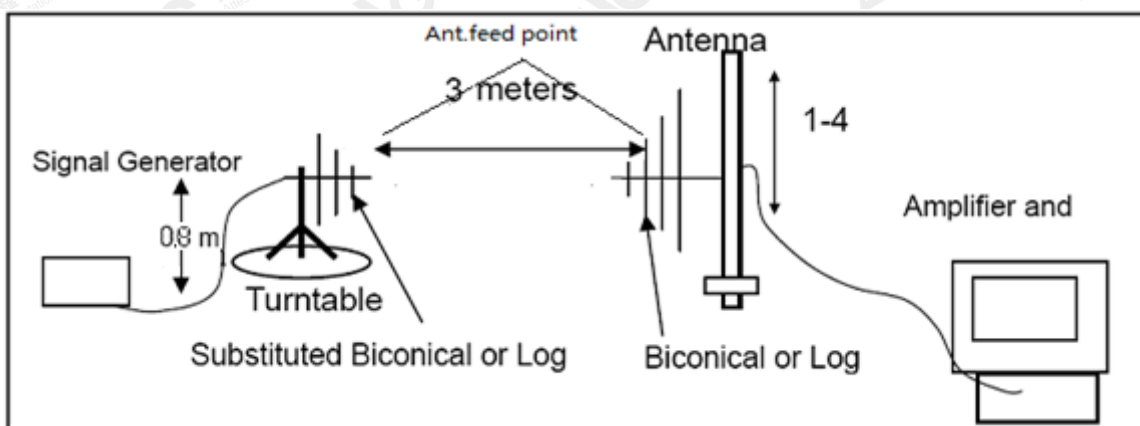
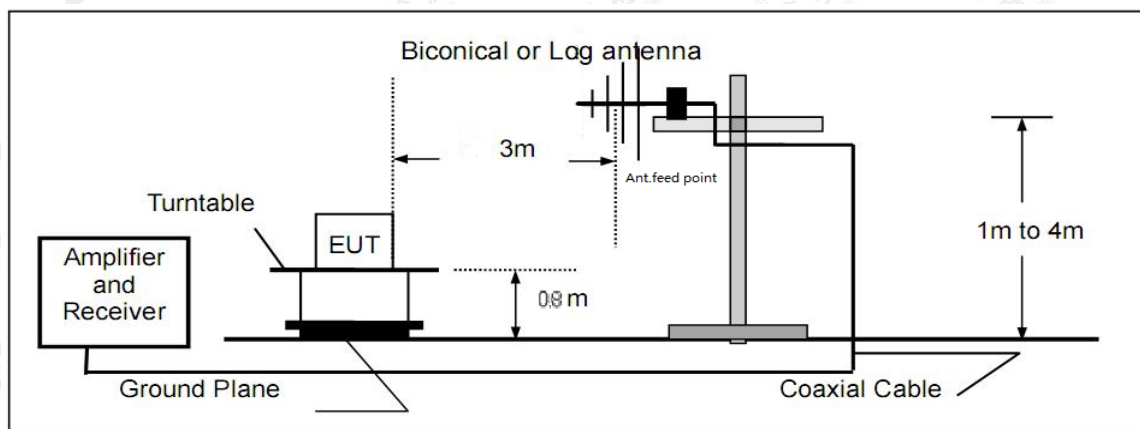
8.2 TEST PROCEDURE

Applicants for licenses must request and use no more power than the actual power necessary for satisfactory operation.

8.3 TEST CONFIGURATION

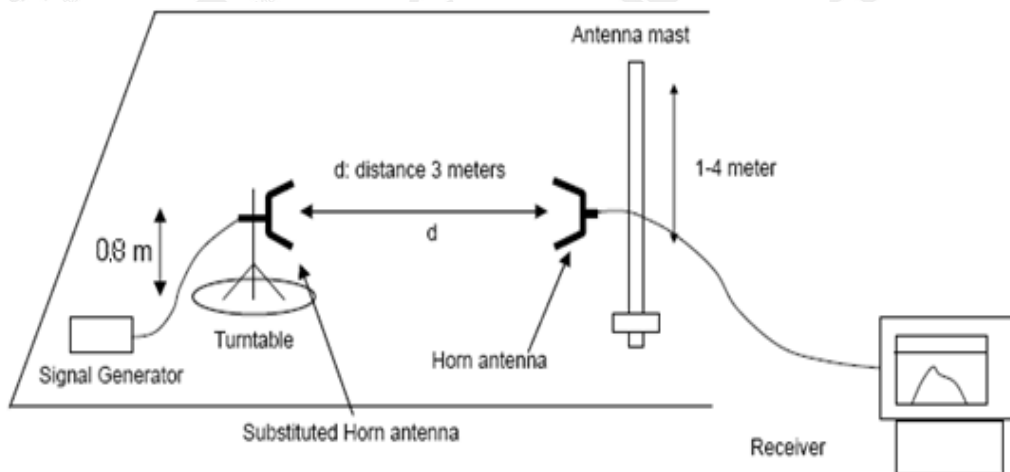
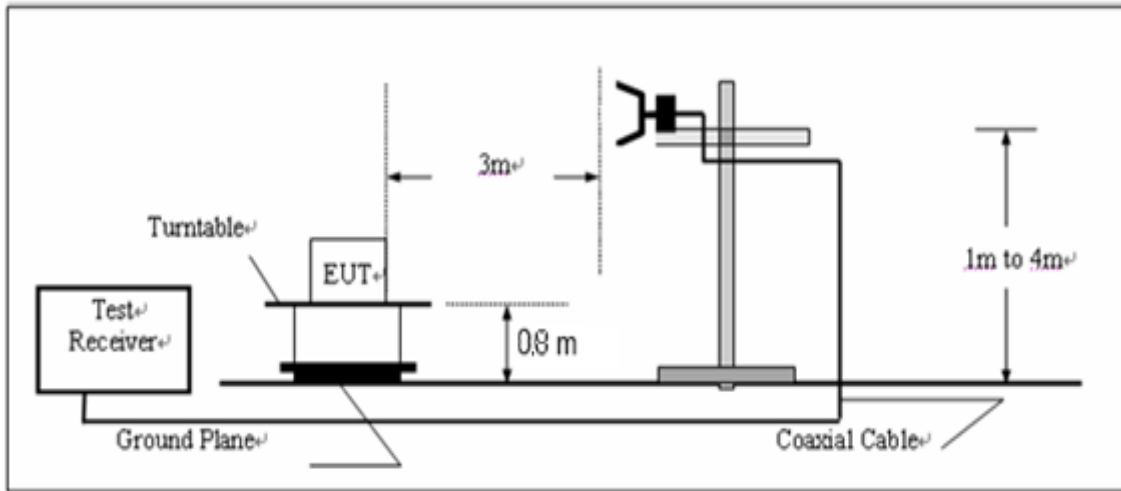
Effective Radiated Power

Radiated Below 1GHz



The results shown in this test report refer only to the sample(s) tested unless otherwise stated and the sample(s) are retained for 30 days only. The document is issued by AGC, this document cannot be reproduced except in full with our prior written permission. The more details and the authenticity of the report will be confirmed at <http://www.agc-cert.com>.

Radiated Above 1 GHz



8.4 TEST RESULT

The maximum Power (CP) for UHF is

Analog: 0.5W for 12.5 KHz Channel Separation

Calculation Formula:

$$\text{Emission Level(dBm)} = \text{S.G.(dBm)} - \text{Cable Loss(dB)} + \text{Ant.Gain(dBi)}$$

$$\text{Margin(dB)} = \text{Limit(dBm)} - \text{Emission Level(dBm)}$$

The results shown in this test report refer only to the sample(s) tested unless otherwise stated and the sample(s) are retained for 30 days only. The document is issued by AGC, this document cannot be reproduced except in full with our prior written permission. The more details and the authenticity of the report will be confirmed at <http://www.agc-cert.com>.

ERP RESULT:

Frequency	Reading Level	Antenna	S.G.	Cable Loss	Ant.Gain	Emission Level	Limit	Margin
(MHz)	(dBuv/m)	Polarization	(dBm)	(dB)	(dBi)	(dBm)	(dBm)	(dB)
Frequency: 462.6375MHz								
462.6375	93.72	V	20.27	0.38	6.60	26.49	27	0.51
462.6375	92.59	H	19.10	0.38	6.60	25.32	27	0.68
Frequency: 467.6375MHz								
467.6375	93.63	V	20.30	0.38	6.60	26.52	27	0.48
467.6375	92.65	H	19.29	0.38	6.60	25.51	27	0.49

The results shown in this test report refer only to the sample(s) tested unless otherwise stated and the sample(s) are retained for 30 days only. The document is issued by AGC, this document cannot be reproduced except in full with our prior written permission. The more details and the authenticity of the report will be confirmed at <http://www.agc-cert.com>.

9. MODULATION CHARACTERISTICS

9.1 PROVISIONS APPLICABLE

According to [FCC Part 95.575, Part 2.1047(a)], for Voice Modulation Communication Equipment, the frequency response of the audio modulation circuit over a range of 100 to 5000Hz shall be measured.

Part 95.575(a) A FRS unit that transmits emission type F3E must not exceed a peak frequency deviation of plus or minus 2.5 kHz, and the audio frequency response must not exceed 3.125 kHz.

Part 2.1047(a) A curve or equivalent data showing the frequency response of the audio modulating circuit over a range of 100 to 5000Hz shall be submitted. For equipment required to have an audio low-pass filter, a curve showing the frequency response of the filter, or of all circuitry installed between the modulation limiter and the modulated stage shall be submitted.

9.2 MEASUREMENT METHOD

9.2.1 Modulation Limit

- (1). Configure the EUT as shown in figure 1, adjust the audio input for 60% of rated system deviation at 1KHz using this level as a reference (0dB) and vary the input level from -20 to +20dB. Record the frequency deviation obtained as a function of the input level.
- (2). Repeat step 1 with input frequency changing to 300, 1000, 1500 and 3000Hz in sequence.

9.2.2 Audio Frequency Response

- (1). Configure the EUT as shown in figure 1.
- (2). Adjust the audio input for 20% of rated system deviation at 1 KHz using this level as a reference (0 dB).
- (3). Vary the Audio frequency from 100 Hz to 10 KHz and record the frequency deviation.
- (4). Audio Frequency Response = $20\log_{10}(\text{Deviation of test frequency}/\text{Deviation of 1 KHz reference})$.

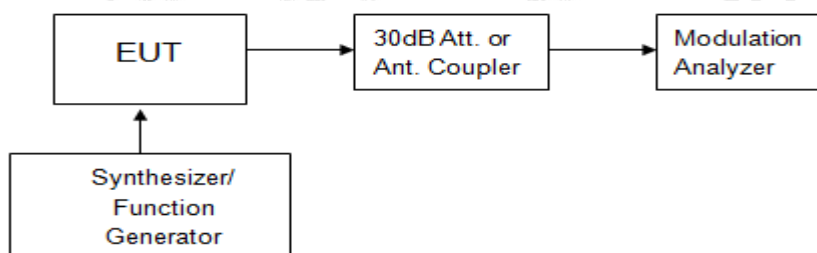


Figure 1: Modulation characteristic measurement configuration

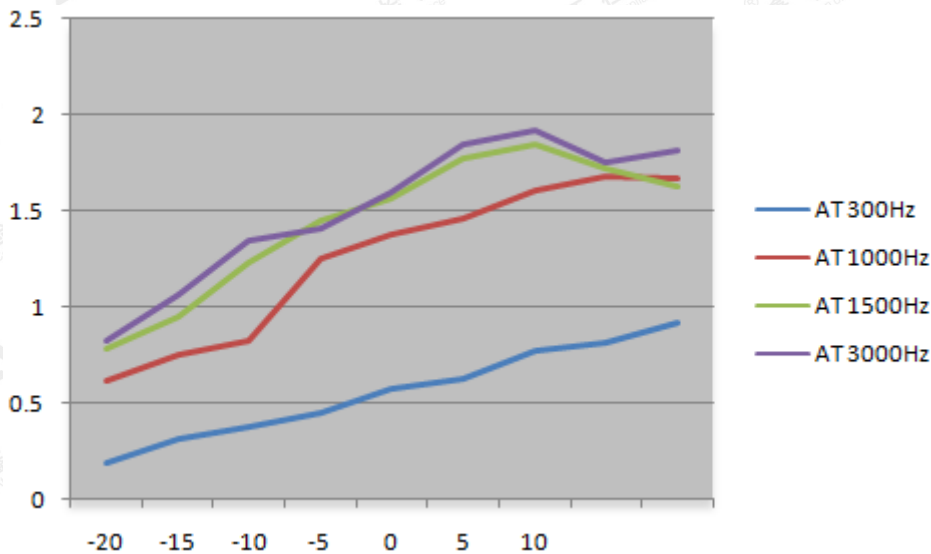
9.3 MEASUREMENT RESULT

The results shown in this test report refer only to the sample(s) tested unless otherwise stated and the sample(s) are retained for 30 days only. The document is issued by AGC, this document cannot be reproduced except in full with our prior written permission. The more details and the authenticity of the report will be confirmed at <http://www.agc-cert.com>.

TEST CHANNEL: 4
(A). MODULATION LIMIT:

462.6375MHz @ 12.5 KHz Channel Separations

Modulation Level (dB)	Peak Freq. Deviation At 300 Hz	Peak Freq. Deviation At 1000 Hz	Peak Freq. Deviation At 1500 Hz	Peak Freq. Deviation At 3000 Hz
-20	0.19	0.61	0.78	0.82
-15	0.31	0.75	0.95	1.06
-10	0.38	0.82	1.23	1.34
-5	0.45	1.25	1.45	1.41
0	0.58	1.38	1.57	1.59
+5	0.63	1.46	1.78	1.85
+10	0.775	1.61	1.85	1.92
+15	0.82	1.68	1.72	1.75
+20	0.92	1.67	1.63	1.81



Note: All the modes had been tested, but only the worst data recorded in the report.

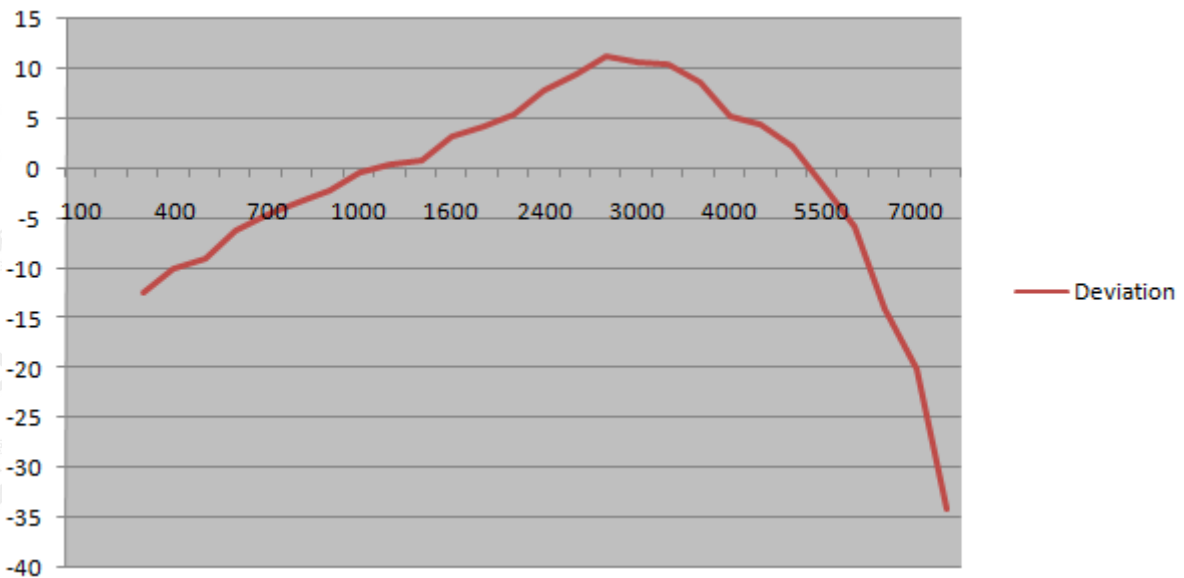
The results shown in this test report refer only to the sample(s) tested unless otherwise stated and the sample(s) are retained for 30 days only. The document is issued by AGC, this document cannot be reproduced except in full with our prior written permission. The more details and the authenticity of the report will be confirmed at <http://www.agc-cert.com>.

(B). AUDIO FREQUENCY RESPONSE:
462.6375MHz @ 12.5 KHz Channel Separations

Frequency (Hz)	Deviation (KHz)	Audio Frequency Response(dB)
100	--	--
200	--	--
300	0.12	-14.89
400	0.16	-12.40
500	0.18	-8.40
600	0.25	-7.54
700	0.30	-6.02
800	0.34	-3.61
900	0.39	-1.72
1000	0.49	-0.35
1200	0.53	0.34
1400	0.56	2.01
1600	0.74	3.29
1800	0.82	4.40
2000	0.94	5.58
2400	1.26	7.89
2500	1.49	9.43
2800	1.85	10.42
3000	1.71	10.83
3200	1.69	10.73
3600	1.38	9.43
4000	0.92	5.30
4500	0.85	4.19
5000	0.65	2.14
5500	0.42	-2.38
6000	0.26	-9.90
6500	0.10	-21.94
7000	0.05	-27.96
7500	0.01	-14.89
9000	--	--
10000	--	--
14000	--	--
18000	--	--
20000	--	--
30000	--	--

The results shown in this test report refer only to the sample(s) tested unless otherwise stated and the sample(s) are retained for 30 days only. The document is issued by AGC, this document cannot be reproduced except in full with our prior written permission. The more details and the authenticity of the report will be confirmed at <http://www.agc-cert.com>.

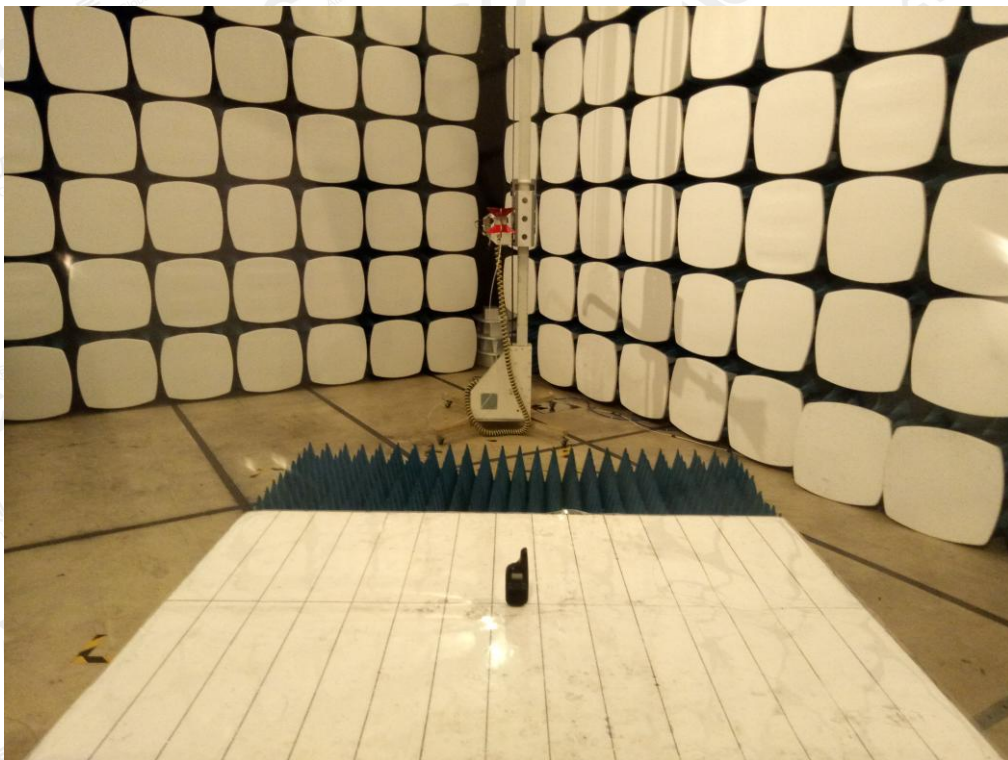
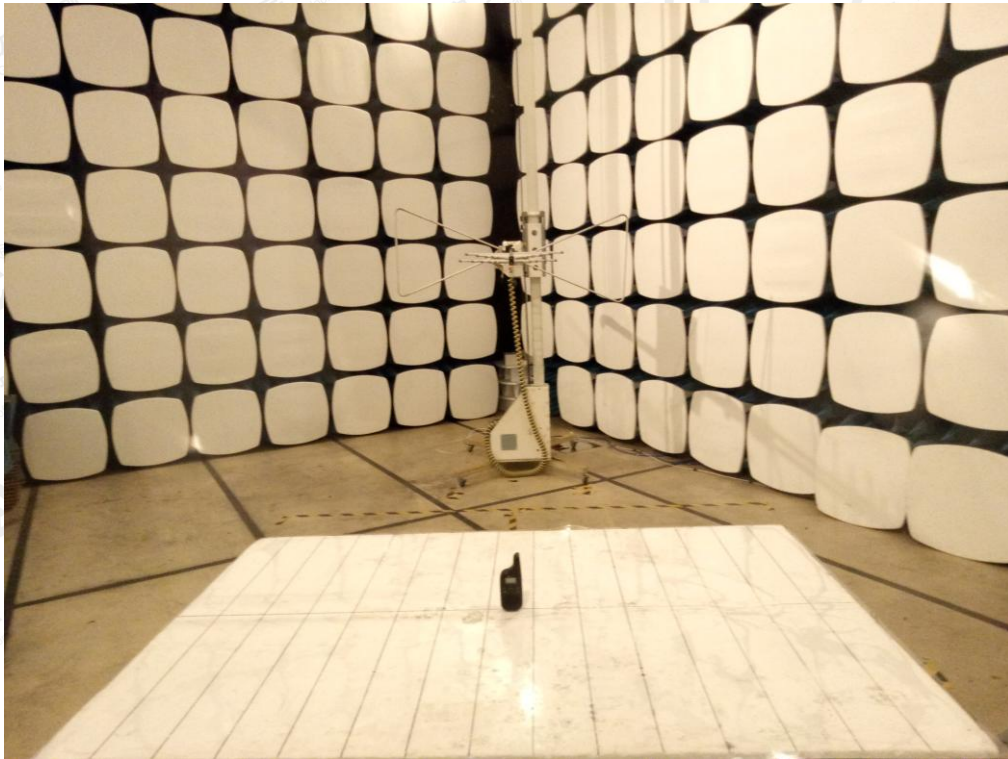
Frequency Response Result



Note: All the modes had been tested, but only the worst data recorded in the report.

The results shown in this test report refer only to the sample(s) tested unless otherwise stated and the sample(s) are retained for 30 days only. The document is issued by AGC, this document cannot be reproduced except in full with our prior written permission. The more details and the authenticity of the report will be confirmed at <http://www.agc-cert.com>.

APPENDIX I: PHOTOGRAPHS OF SETUP
RADIATED EMISSION TEST SETUP



The results shown in this test report refer only to the sample(s) tested unless otherwise stated and the sample(s) are retained for 30 days only. The document is issued by AGC, this document cannot be reproduced except in full with our prior written permission. The more details and the authenticity of the report will be confirmed at <http://www.agc-cert.com>.

APPENDIX II: EXTERNAL VIEW OF EUT
TOTAL VIEW OF EUT



TOP VIEW OF EUT



The results shown in this test report refer only to the sample(s) tested unless otherwise stated and the sample(s) are retained for 30 days only. The document is issued by AGC, this document cannot be reproduced except in full with our prior written permission. The more details and the authenticity of the report will be confirmed at <http://www.agc-cert.com>.

BOTTOM VIEW OF EUT



FRONT VIEW OF EUT



The results shown in this test report refer only to the sample(s) tested unless otherwise stated and the sample(s) are retained for 30 days only. The document is issued by AGC, this document cannot be reproduced except in full with our prior written permission. The more details and the authenticity of the report will be confirmed at <http://www.agc-cert.com>.

BACK VIEW OF EUT



LEFT VIEW OF EUT



The results shown in this test report refer only to the sample(s) tested unless otherwise stated and the sample(s) are retained for 30 days only. The document is issued by AGC, this document cannot be reproduced except in full with our prior written permission. The more details and the authenticity of the report will be confirmed at <http://www.agc-cert.com>.

RIGHT VIEW OF EUT

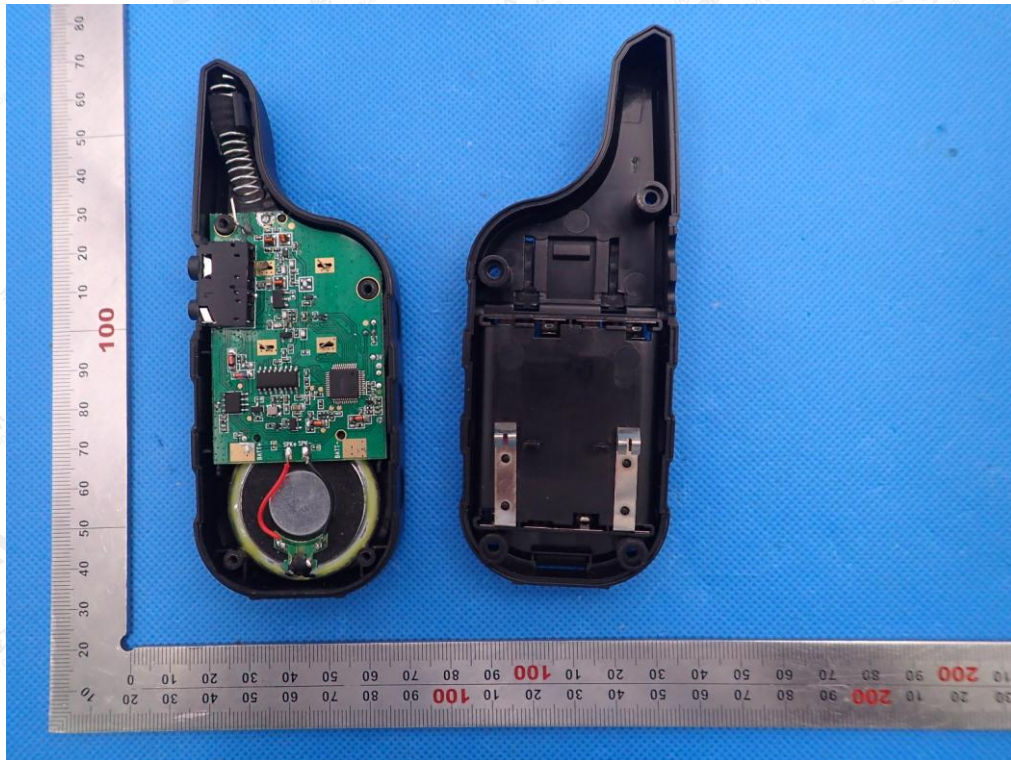


OPEN VIEW-1 OF EUT

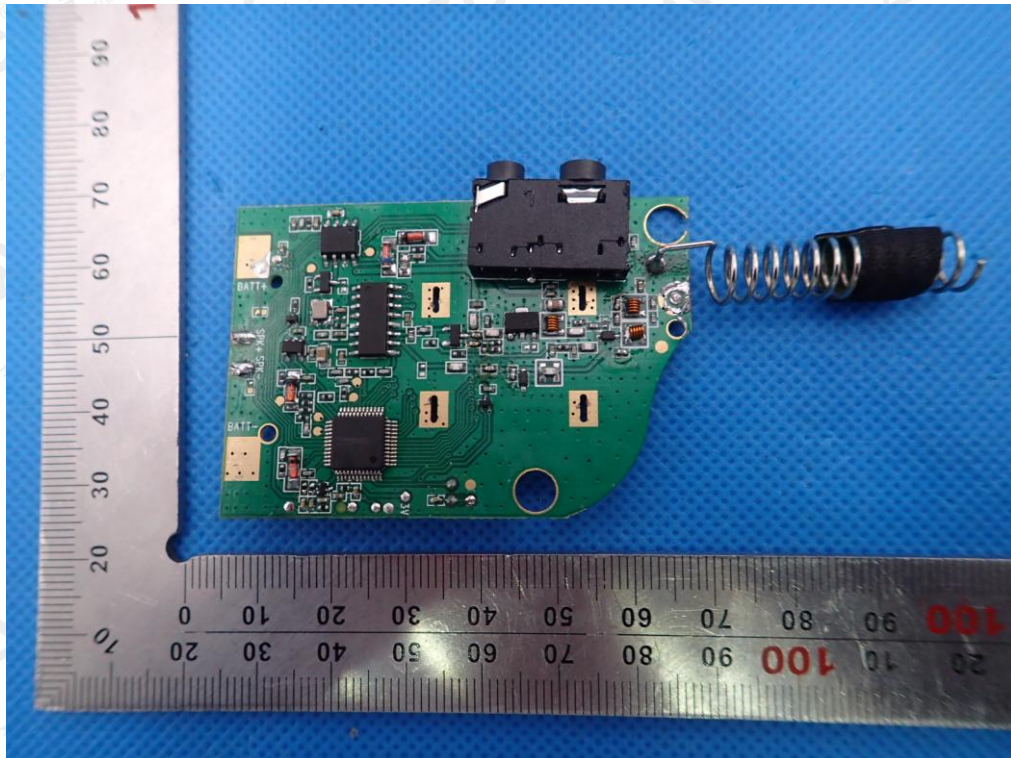


The results shown in this test report refer only to the sample(s) tested unless otherwise stated and the sample(s) are retained for 30 days only. The document is issued by AGC, this document cannot be reproduced except in full with our prior written permission. The more details and the authenticity of the report will be confirmed at <http://www.agc-cert.com>.

OPEN VIEW-2 OF EUT

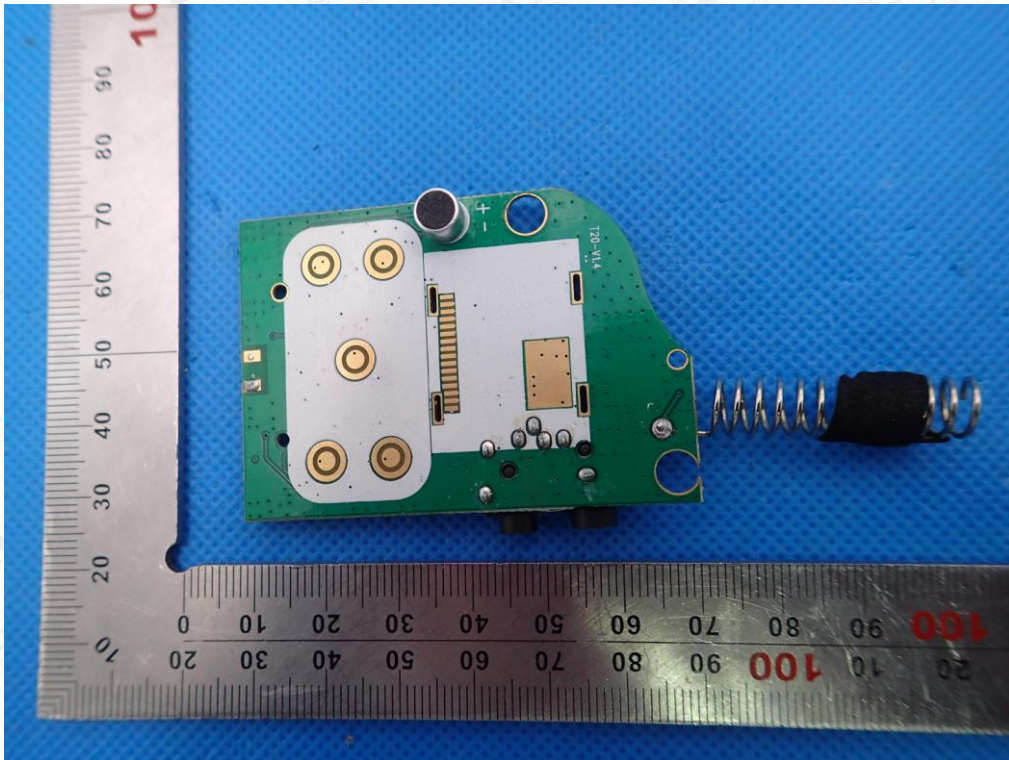


INTERNAL VIEW-1 OF EUT



The results shown in this test report refer only to the sample(s) tested unless otherwise stated and the sample(s) are retained for 30 days only. The document is issued by AGC, this document cannot be reproduced except in full with our prior written permission. The more details and the authenticity of the report will be confirmed at <http://www.agc-cert.com>.

INTERNAL VIEW-2 OF EUT



----END OF REPORT----

The results shown in this test report refer only to the sample(s) tested unless otherwise stated and the sample(s) are retained for 30 days only. The document is issued by AGC, this document cannot be reproduced except in full with our prior written permission. The more details and the authenticity of the report will be confirmed at <http://www.agc-cert.com>.