

INTERNAL PHOTOGRAPHS

This document contains 10 photographs

Photograph No.1
Repeater 2A transceiver
Internal view with rear side panel removed



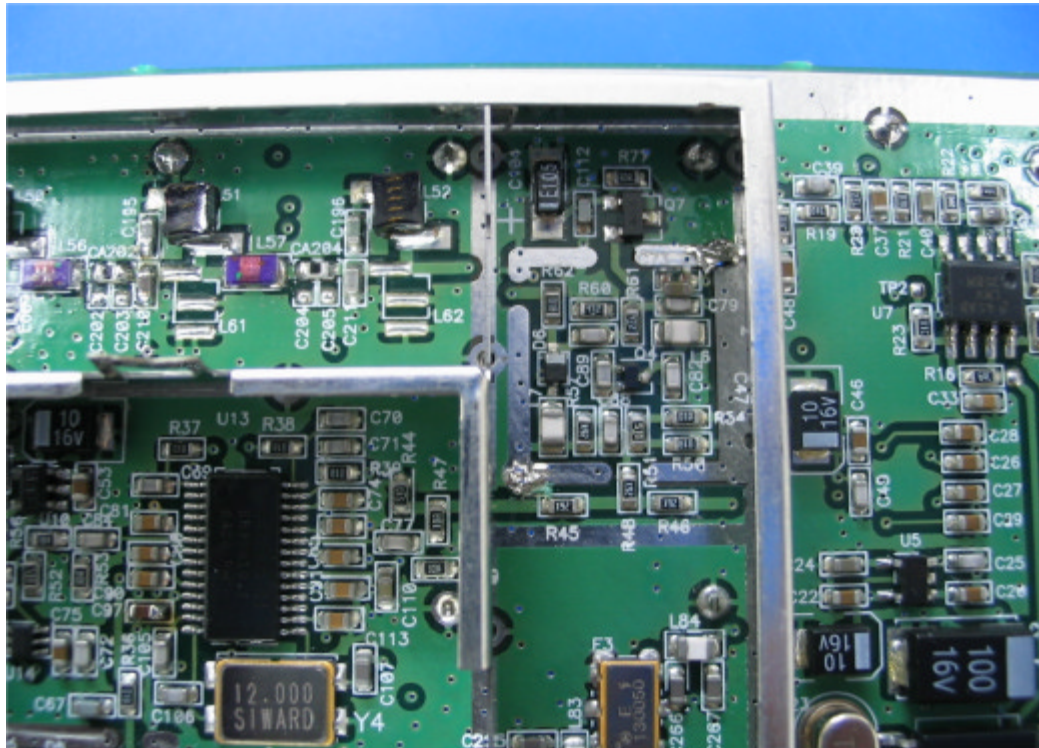
Photograph No.2
Repeater 2A transceiver
PCB top view



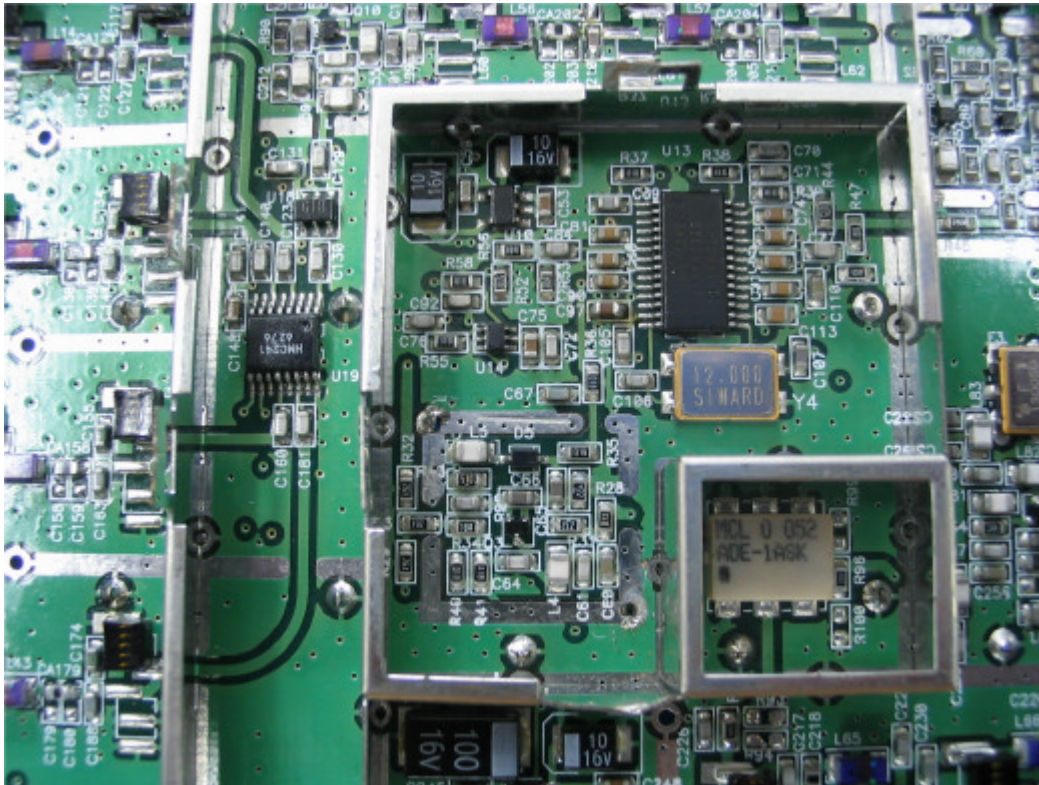
Photograph No.3
Repeater 2A transceiver
PCB top view without main shield



Photograph No.4
Repeater 2A transceiver
PCB top view without secondary shields



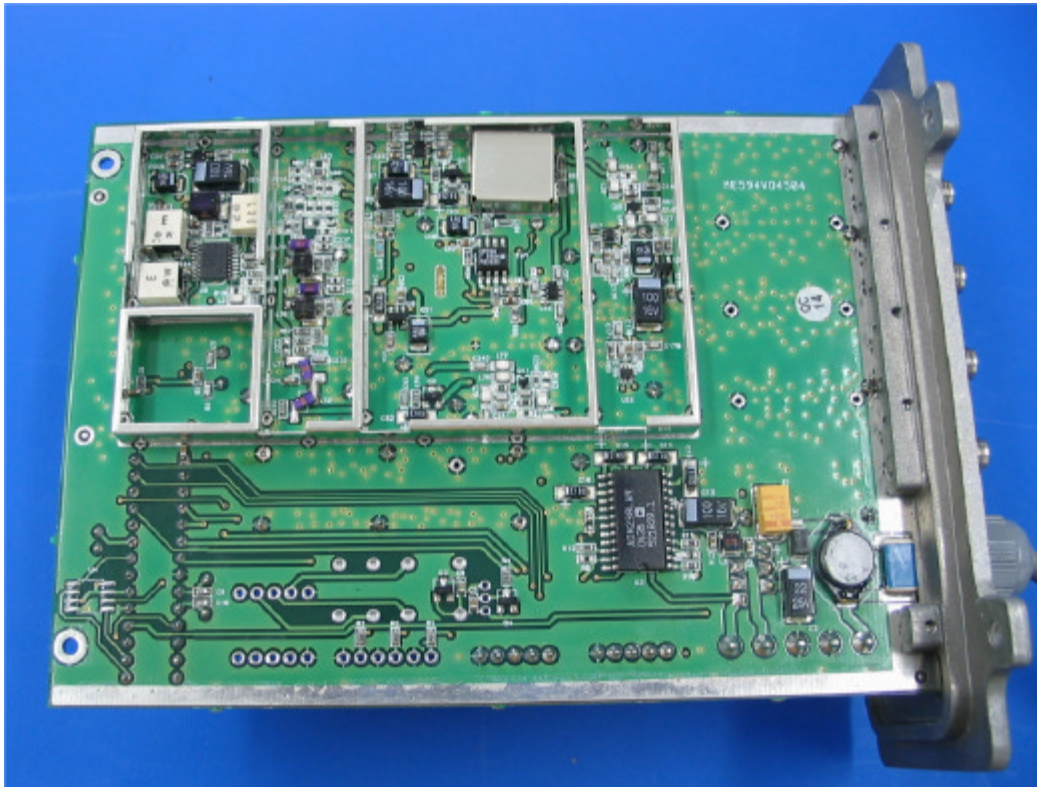
Photograph No.5
Repeater 2A transceiver
PCB top view without secondary shields



Photograph No.6
Repeater 2A transceiver
PCB second side view



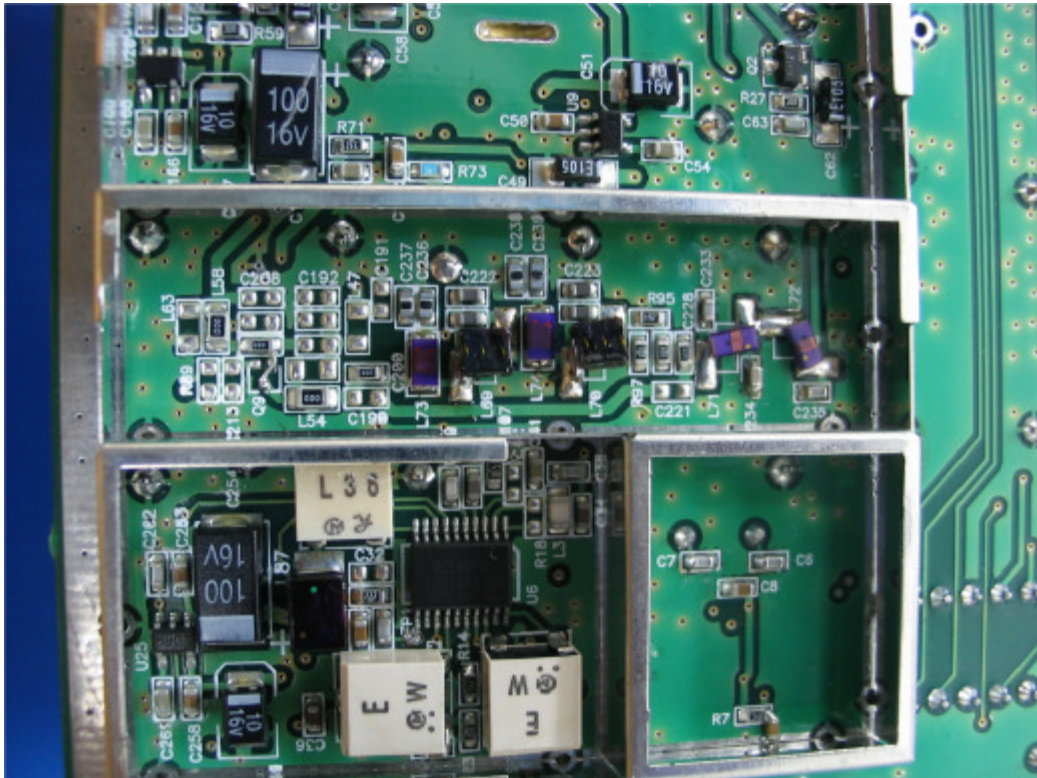
Photograph No.7
Repeater 2A transceiver
PCB second side view without shield



Photograph No.8
Repeater 2A transceiver
PCB second side view under shield



Photograph No.10
Repeater 2A transceiver
PCB second side view under shield (zoomed)



Photograph No.11
Repeater 2A transceiver
PCB second side view underneath subshield

