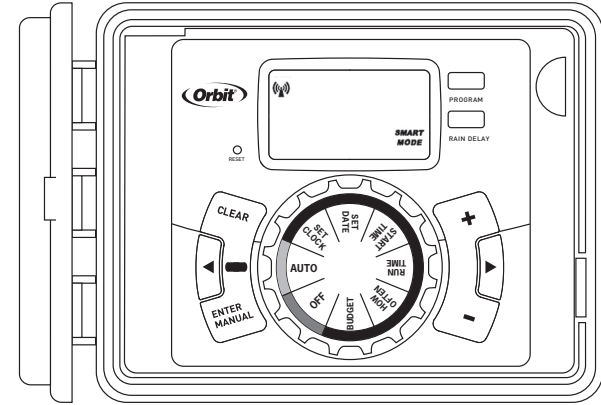




12-STATION SPRINKLER CONTROLLER QUICK START GUIDE



Model 27396

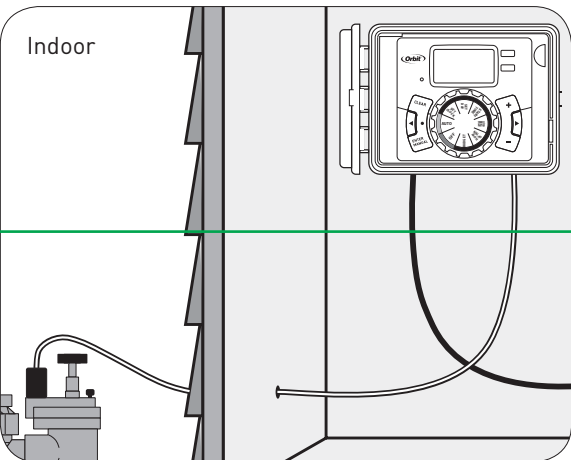
REQUIRED TOOLS: Phillips Screwdriver Wire Strippers

Note: The quick start guide is intended to help you get up and running with your new Orbit® Controller. It includes basic installation, programming and Iris® connection help. For more information about Iris®, please visit www.lowes.com/iris. For additional manual programming instructions, please download the full manual "Outdoor Swing Panel Controller" at www.orbitonline.com

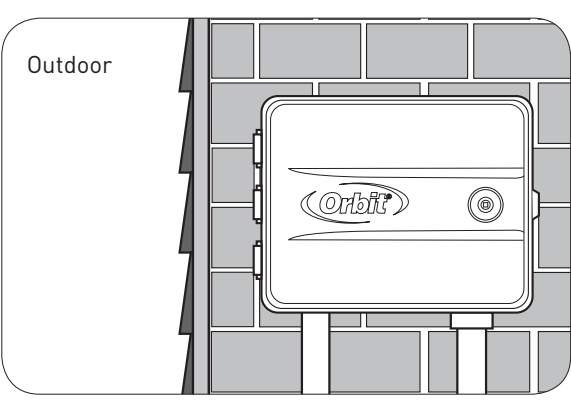
PN 27396-24 rD

1. SELECT LOCATION

NOTE: Check for signal strength before mounting to the wall. If it is not strong enough in the chosen location, a range extender or smart plug will have to be purchased to strengthen the signal.



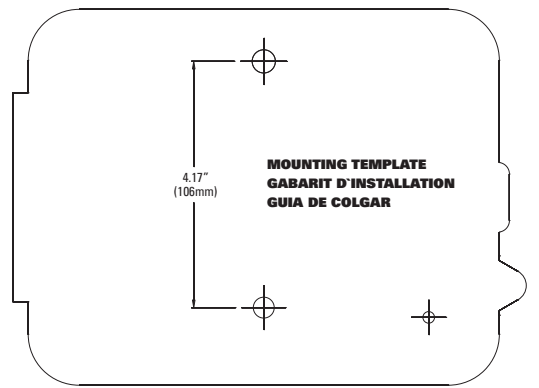
Clean, dry, and out of direct sunlight
Allow 9 inch clearance for the swing door



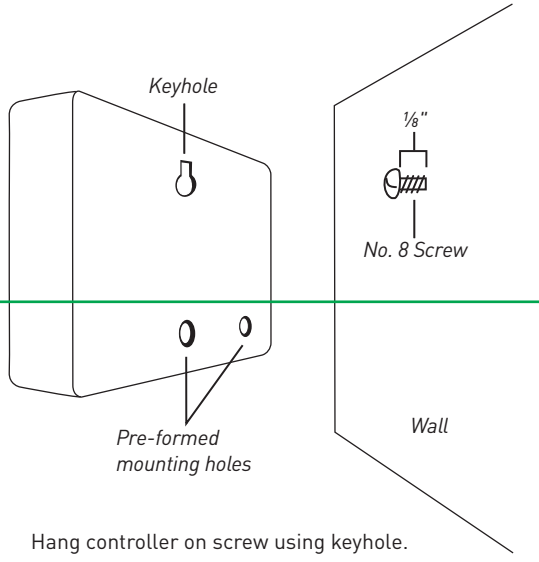
For detailed instructions on outdoor wiring, please download the full manual "Outdoor Swing Panel Controller" at www.orbitonline.com

Warning: Check state and local codes. Orbit recommends using a licensed electrical contractor for outdoor wiring of controller.

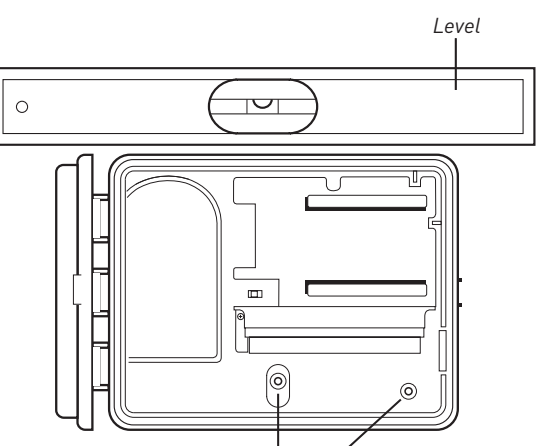
2. MOUNT CONTROLLER



Use included mounting template to mark screw locations.

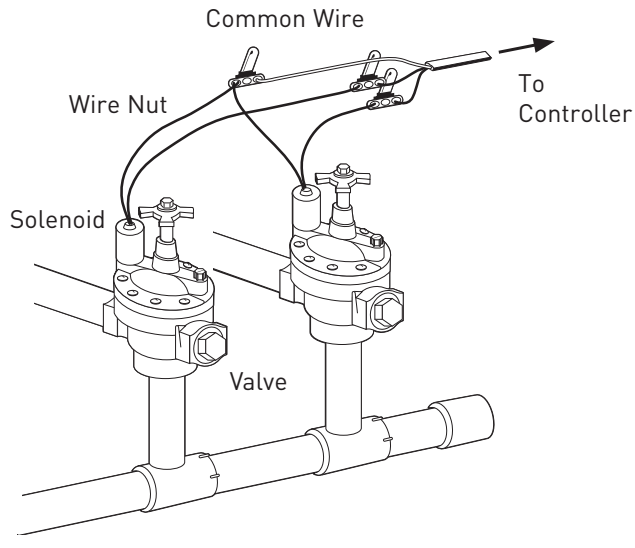


Hang controller on screw using keyhole.



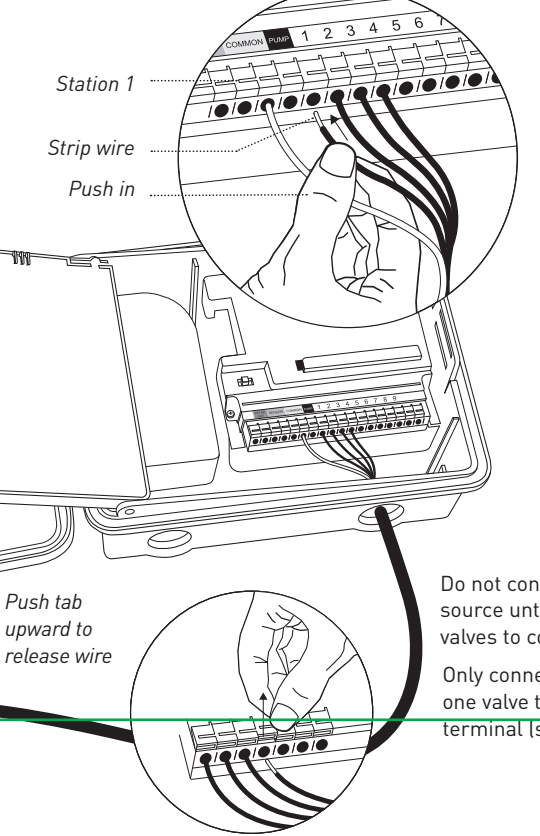
Screw through one of the pre-formed mounting holes.

3. CONNECT SPRINKLER VALVES TO CONTROLLER WIRES



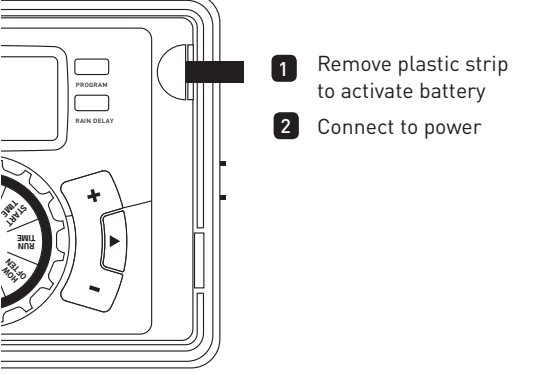
Connect one of the two wires from each valve to the common wire leading to the controller (usually white). Connect the other wire from each valve to one of the colored wires leading to the controller.

4. CONNECT VALVE WIRE TO TERMINAL



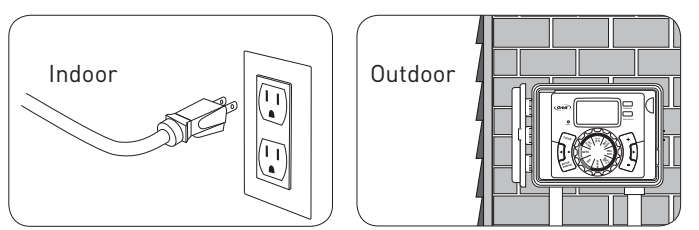
Do not connect to power source until after wiring valves to controller
Only connect one valve to each terminal (station)

5. ACTIVATE BATTERY



- 1 Remove plastic strip to activate battery
- 2 Connect to power

6. CONNECT CONTROLLER TO POWER SOURCE



Warning: See complete manual for outdoor wiring instructions at www.orbitonline.com

7. CONNECT CONTROLLER TO IRIS® HOME MANAGEMENT SYSTEM

This sprinkler controller is designed to work with the Lowe's Iris® home management system (Iris® Smart Hub required). Once connected to Iris®, you can program, operate, and monitor your controller from anywhere using your smart phone, tablet, or computer. Learn more by visiting www.lowes.com/iris. [This controller can also be used as a standalone sprinkler controller without connecting to Iris®. See the MANUAL CONTROLLER OPERATION WITHOUT IRIS® section.]

Pair Controller with Iris®

- 1 Install the controller as shown in the previous steps.
- 2 Log into your Iris® account at www.lowes.com/iris using a computer. Follow the instructions in the "Add Device" section of the Iris® website.
- 3 Turn the dial to 'AUTO'
- 4 When the controller is first connected to power, it will automatically attempt to connect to Iris.

NOTE: If pairing is not successful after 10 minutes, the controller will stop trying to pair. To re-enter pairing mode, push the 'SYNC' button 5 times in rapid succession.

- 5 The wireless icon will flash until the controller is paired with iris. Once paired, the wireless icon will remain solid and the words "SMART MODE" will appear on screen.

Important notes about using the controller while paired with Iris®:

- You must use the iris website or mobile app to control and program the device. You will not be able to program or run the controller at the device itself.
- The controller will operate in smart mode in all dial positions other than OFF. When the dial is turned to OFF, all watering is suspended and you will not be able to operate the controller at the device or from the website or mobile app.
- To run or program the controller at the device, you must first un-pair the device from iris (see "Remove Controller from Iris®" section below)

Testing Communication with Iris®

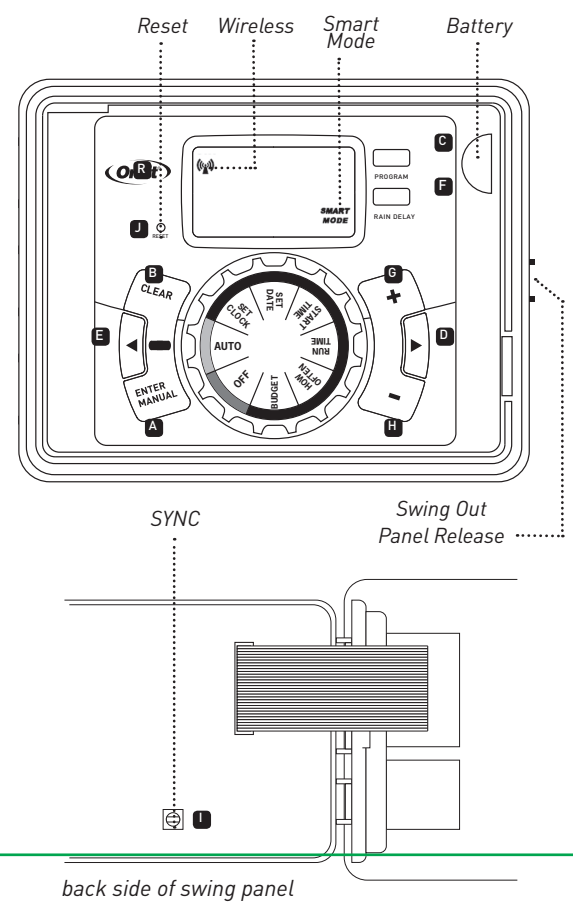
Testing a controller's communication with Iris® will identify a specific controller and test that a controller is correctly connected to Iris®.

- 1 To initiate test mode, select the device on the Iris® website and click "Test". The word "TEST" will appear on the LCD.

Remove Controller from Iris®

If you do not pair or you un-pair the controller you may still operate the controller manually. (see "Manual Controller Operation Without Iris®"). Without Iris®, you will NOT be able to control and monitor your controller from any smart device or have the additional functions and features available through the Iris® website.

- 1 Log into your Iris® account at www.lowes.com/iris using a computer.
- 2 Select the controller on the Iris® website and click "Remove". Alternatively if you want to manually un-pair the controller press the SYNC button 5 times in rapid succession. However it will try to re-connect again. You will need to let it time out or hold the SYNC button for 5 seconds to cancel re-pairing.



Button Function:

NOTE: Functions A through H will not work during smart mode

- A** ENTER - To confirm a new setting
MANUAL - To water manually
- B** CLEAR - To clear a setting
- C** PROGRAM - to switch between programs - A, B, and C
- D** ARROW [▶] - To skip to the next setting / watering station or move to other programs/settings
- E** ARROW [◀] - To go back to the previous setting/ watering station or move to other programs/settings
- F** RAIN DELAY - To pause operation for 24-72 hours due to rain or other factors
- G** [+] - To increase a numeric setting
- H** [-] - To decrease a numeric setting
- I** SYNC - Pushing SYNC 5 button times in rapid succession will restart pairing to IRIS. If you do not want to re-pair to IRIS then after the Wireless icon has started to flash hold the SYNC button for 5 seconds.
- J** RESET: Pressing RESET will reset the hardware and clear all settings on the device itself. Pushing reset will not delete any iris settings.

Dial Position Function:

- AUTO - Watering mode
- SET CLOCK - Set calendar and clock time
- SET DATE - Year, Month, and Day
- START TIME - Set time to begin watering
- RUN TIME - Set watering duration for each station
- HOW OFTEN - Set frequency of watering days
- BUDGET - Adjust overall watering as a percentage
- OFF - Turn all stations off

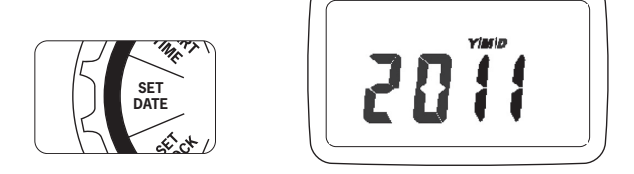
8. MANUAL CONTROLLER OPERATION WITHOUT IRIS®

- 1 Set Current Time (e.g. pacific, mountain standard)



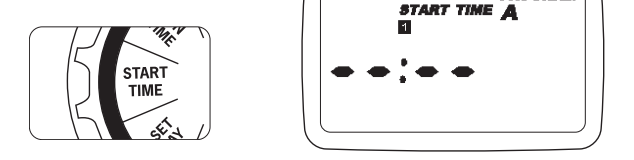
Turn dial to set clock enter current time (+/-)

- 2 Set Date



- Turn dial to SET DATE to enter the Year, Month and Day.
- Use the [+/-] button to select the Year.
- Press [ENTER] to advance to Month and Day.

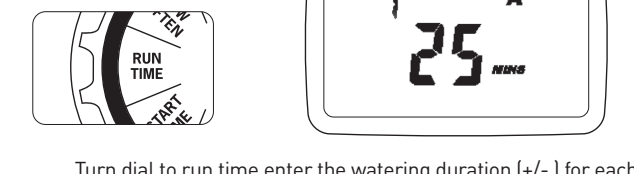
- 3 Set 'START TIME' Time-to-begin watering



- Turn dial to START TIME position.
- Enter one start time using the [+/-] button.
- Press the [ENTER] button to save.

Note: Additional start times - Additional start times can be entered if you want your sprinklers to water the same area multiple times a day. For instructions please download the "Outdoor Swing Panel Controller" manual at www.orbitonline.com.

- 4 Select Watering Duration Set for each station then press enter



Turn dial to run time enter the watering duration (+/-) for each station [ENTER] or [ARROW] to move between stations.

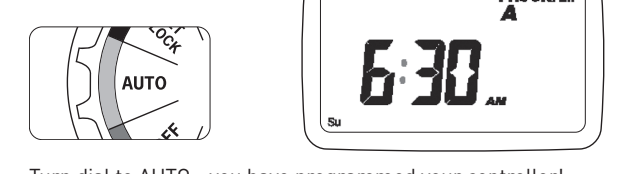
- 5 Set Watering Days or Interval



Turn dial to how often to select watering days ([ARROWS] to move and [ENTER] to select).

To water on Odd or Even days or to water using Intervals days, please download the full manual "Outdoor Swing Panel Controller" at www.orbitonline.com for instructions.

- 6 Set Auto Mode



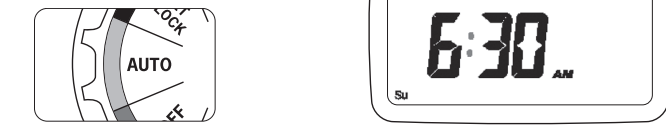
Turn dial to AUTO—you have programmed your controller!

9. ADDITIONAL FEATURES

NOTE: Additional features are not available during Smart Mode.

RAIN DELAY

- Turn dial to AUTO and Press the [RAIN DELAY] button.

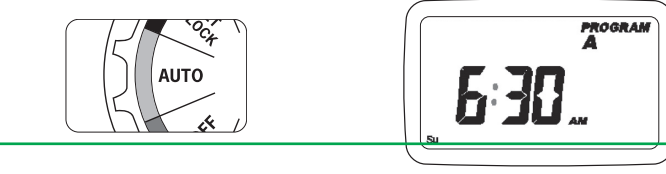


- Push the [+/-] to select 24, 48 or 72 hours.
- Press [ENTER] to begin.
- Press [CLEAR] to cancel the rain delay.

MANUAL WATERING

Your controller has the ability to allow you to manually water with-out disturbing the preset program.

- To Run all stations at the pre-programmed duration**
- Turn the dial to AUTO.
- Press the [MANUAL] button. Display will show A B and ALL.
- Press [ENTER] (or wait a few seconds) to begin manual watering.



All stations will water consecutively for their programmed duration.

To Run a specific station for specified time

- Turn the dial to AUTO.
- Press the [MANUAL] button.
- Press the [◀▶] buttons until desired station number appears.
- Press the [+/-] to enter the desired duration.
- Press [ENTER] (or wait a few seconds) to begin manual watering.

To stop Manual Watering press [CLEAR].

Note: After the [MANUAL] button has been pushed, if a selection is not made within 5 seconds all stations and programs will begin watering using the programmed RUN TIMES. If no RUN TIMES have been set, nothing will happen and the display will return to the time of day.

BACKUP BATTERY

Your controller requires a CR2032 Lithium battery to maintain your program in case of an AC power loss.

Tip: The Battery should be replaced every year, to avoid loss of programming.

Note: Used up or dead batteries must be removed from the controller and disposed of properly.

A battery alone will not operate the valves in your sprinkling system nor will it connect to IRIS with battery power alone. The sprinkler controller transformer must be connected to an AC line voltage source.

For instructions on "Water Budgeting", connecting the controller to a "Pump Start" relay, replacing the "Backup Battery" or for installing your controller outdoor, please download the full manual "Outdoor Swing Panel Controller" at www.orbitonline.com

HELP

For Help with Iris®
Iris® Customer Service
1.855.469.IRIS
www.lowes.com/iris

For Help with Product or Warranty
Customer Service
1-800-488-6156
www.orbitonline.com

Before returning this sprinkler controller to the store, contact Orbit Technical Service at: 1-800-488-6156, 1-801-299-5555.

LISTINGS

The sprinkler controller is tested to UL1951 standard & is ETL® listed. Appropriate international models are CSA®.

This Class B. digital apparatus complies with Canadian ICES-003.

Disconnection : Type 1Y

Input: 120V, 60Hz, 0.2A; Output: 26V, 500mA

Rated impulse voltage: 1500V

Pollution degree: 2

The supply cord of this control can be replaced only by the manufacturer or his accredited service agent.

TRADEMARK NOTICE

Orbit® Irrigation Products, Inc.
North Salt Lake, UT 84054

© 2014 Orbit Irrigation Products, Inc. All rights reserved. All trade names are registered trademarks of respective manufacturers listed.

WARRANTY AND STATEMENT

Orbit® Irrigation Products, Inc. warrants to its customers that its products will be free from defects in materials and workmanship for a period of six years from the date of purchase.

We will replace, free of charge, the defective part or parts found to be defective under normal use and service for a period of up to six years after purchase (proof of purchase required).

We reserve the right to inspect the defective part prior to replacement. Orbit Irrigation Products, Inc. will not be responsible for consequential or incidental cost or damage caused by the product failure. Orbit liability under this warranty is limited solely to the replacement or repair of defective parts.

To exercise your warranty, return the unit to your dealer with a copy of the sales receipt.

Warning: Changes or modifications to this unit not expressly approved by the party responsible for compliance could void the user's authority to operate the equipment.

Caution: This appliance is not intended for use by young children or infirm persons without supervision. Young children should be supervised to ensure that they do not play with the appliance.

FCC STATEMENT

The U.S. Federal Communications Commission (in 47 cfr 15.105) has specified that the following notices be brought to the attention of users of this product.

This device complies with part 15 of the FCC rules and the Industry CANADA licence-exempt RSS standard(s). Operation is subject to the following two conditions: (1) This device may not cause harmful interference, and (2) this device must accept any interference received, including interference that may cause undesired operation.

Pursuant to Part 15.21 of the FCC Rules, any changes or modifications to this equipment not expressly approved by Orbit may cause harmful interference and void the FCC authorization to operate this equipment.

Caution: To maintain the compliance with the FCC's RF exposure guideline, place the device at least 20 cm from nearby persons.

NOTE: This equipment has been tested and found to comply with the limits for a Class B digital device, pursuant to Part 15 of the FCC Rules. These limits are designed to provide reasonable protection against harmful interference in a residential installation. This equipment generates, uses, and can radiate radio frequency energy and, if not installed and used in accordance with the instructions, may cause harmful interference to radio communications. However, there is no guarantee that interference will not occur in a particular installation. If this equipment does cause harmful interference to radio or television reception, which can be determined by turning the equipment off and on, the user is encouraged to try to correct the interference by one or more of the following measures:

- Reorient or relocate the receiving antenna.
- Increase the separation between the equipment and receiver.
- Connect the equipment into an outlet on a circuit different from that to which the receiver is connected.
- Consult the dealer or an experienced radio/TV technician for help.

Changes or modifications not expressly approved by the party responsible for compliance could void the user's authority to operate the equipment.