

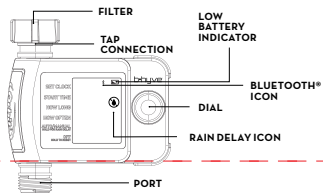
b·hyve



B-HYVE XD Bluetooth Hose Faucet Timer

QUICK START GUIDE

HT31ASR



Write down the MAC address: 12 digit alphanumeric code located on the bottom of the timer.

Timer MAC Address: _____

Installing the Batteries

Insert two AA (1.5V) alkaline batteries (not included) and replace the tray.

Note: Firmly replace the battery tray to ensure water resistance and increase battery life. You will know the battery tray is fully inserted if it does not pull out easily.

- Replace batteries when low battery icon appears on display.

⚠ Used-up or dead batteries must be removed from the timer and disposed of properly. Do not dispose of batteries in fire. Batteries may explode or leak. Remove batteries when storing timer.

PROGRAMMING THE TIMER WITH BLUETOOTH®

Open the B-hyve® App

Log into your B-hyve® account and tap **My B-hyve®**. Go to **DEVICES** then **ADD DEVICE**. Select **B-hyve® XD**. The app will walk you through the rest of the process.



- For new users, search apps for **B-hyve®** and download the free Android or iOS app. Create an account to begin setup.
- The Bluetooth® icon on the display should be flashing indicating the timer is in pairing mode.
- If at any time you need to re-pair or do a factory reset, turn the dial so the arrow is pointing to **OFF**, press and hold the dial for 5 seconds.

Note: Your LCD will show Lock Icon to indicate that the timer is using the B-hyve® app to program your timer.

Note: When the display shows a full screen of symbols release the dial. The display will show 12:00pm in the **AUTO/MANUAL** mode verifying the reset has been completed. Resetting the timer will erase all programs and it will have to be reprogrammed to your desired watering schedule.

PROGRAMMING THE TIMER AT THE TAP

Set Clock

- Turn the dial so the arrow is pointing to **SET CLOCK**.

- Press the dial to select, the hour will begin to flash.
- Turn the dial until current hour is displayed including the correct AM or PM, then press dial to confirm. The minutes will begin to flash, indicating the next step.
- Turn the dial until the current minutes are displayed, then press dial to confirm.

Start Time

- Turn the dial so the arrow is pointing to **START TIME**.
- Press the dial to select, the hour will begin to flash.
- Turn the dial until the desired start time hour is displayed including the correct AM or PM, then press dial to confirm. The minutes will begin to flash, indicating the next step.
- Turn the dial until the desired minutes are displayed, then press dial to confirm.

How Long

- Turn the dial so the arrow is pointing to **HOW LONG**.
- Press the dial to select, the minutes will begin to flash.
- Turn the dial until the desired number of minutes are displayed. Select between 1 to 360 minutes then press dial to confirm.

How Often

- Turn the dial so the arrow is pointing to **HOW OFTEN**.
- Press the dial to select, the number will begin to flash.
- Turn the dial until the desired number of hours or days is displayed, then press to confirm. You may choose to water every 1 hour, 3 hours, 6 hours, 12 hours, or from 1 to 7 days.

Note: 1 is every day, 2 is every other day, etc.

Congratulations!

Your timer is now programmed. Turn your dial to AUTO to allow your timer to water according to programmed time and frequency. The screen will flash between the clock and the next start time.

ADDITIONAL FEATURES

Rain Delay

Rain delay allows you to postpone watering for a set period of time. To access the rain delay, follow the steps below.

- With the timer in the **AUTO/MANUAL** mode, press and hold the dial for 3 seconds.
- The rain delay symbol will appear and the number of days will begin to flash.
- Turn the dial until the desired number of days is displayed, then press to confirm. You may select a delay of 1 to 7 days.
- Screen will flash between clock and remaining time before programmed cycle resumes.

- To remove a rain delay, press and hold the dial for 3 seconds. The rain delay symbol will turn off and your timer will resume its programmed watering schedule.

Manual/Hand Watering

This feature allows you to water without interrupting your set schedule. To access this feature, follow the steps below.

- With the arrow pointing to **AUTO/MANUAL**, press the dial to select.
- Manual will appear and minutes will begin to flash.
- Turn the dial until the desired number of minutes are displayed. Select between 1 to 360 minutes then press dial to confirm.
- The manual icon will appear and the screen will flash between clock and time remaining before programmed cycle resumes.

Note: There may be a slight delay between the time the dial is pressed and when watering begins.

- To stop manual watering press the dial. The manual watering symbol will turn off and your timer will resume its programmed watering schedule.

- If the manual watering runs into the next scheduled event, the next watering event is canceled--manual watering takes priority.



When expecting freezing temperatures, remove the timer from the hose tap and store indoors to avoid potential freeze damage.



Filter traps dirt particles, prolonging life of timer. Clean filter regularly and replace if worn.

Need Help?

If you encounter a problem, please use the following resources before retuning your B-hyve® to the store.

Scan the QR Code to access the help page online.

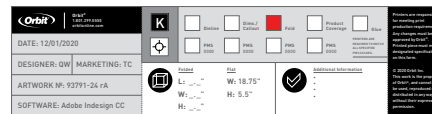


Timer

Range: 4.5m (150ft) without interference
 Pressure Operating Range: 0.68-6.89 bar (10-100 PSI)
 Temperature Operating Range:
 0-40°C (32-104°F)
 For Outdoor Use With Cold Water Only
 Not For Use With Appliances



Model No: HT31BT
 Part No: 93791, 94791, 93791, 93391
 DN 96791-24 r/A



FCC Caution

This device complies with part 15 of the FCC Rules. Operation is subject to the following two conditions:

- (1) This device may not cause harmful interference, and
- (2) this device must accept any interference received, including interference that may cause undesired operation.

Any Changes or modifications not expressly approved by the party responsible for compliance could void the user's authority to operate the equipment.

Note: This equipment has been tested and found to comply with the limits for a Class B digital device, pursuant to part 15 of the FCC Rules. These limits are designed to provide reasonable protection against harmful interference in a residential installation. This equipment generates uses and can radiate radio frequency energy and, if not installed and used in accordance with the instructions, may cause harmful interference to radio communications. However, there is no guarantee that interference will not occur in a particular installation. If this equipment does cause harmful interference to radio or television reception, which can be determined by turning the equipment off and on, the user is encouraged to try to correct the interference by one or more of the following measures:

- Reorient or relocate the receiving antenna.
- Increase the separation between the equipment and receiver.
- Connect the equipment into an outlet on a circuit different from that to which the receiver is connected.
- Consult the dealer or an experienced radio/TV technician for help.

The device has been evaluated to meet general RF exposure requirement. The device can be used in portable exposure condition without restriction.

IC Warning

This device complies with Industry Canada licence-exempt RSS standard(s). Operation is subject to the following two conditions:

- (1) This device may not cause interference, and
- (2) This device must accept any interference, including interference that may cause undesired operation of the device.

Le présent appareil est conforme aux CNR d'Industrie Canada applicables aux appareils radio exempts de licence. L'exploitation est autorisée aux deux conditions suivantes:

- (1) l'appareil ne doit pas produire de brouillage, et
- (2) l'utilisateur de l'appareil doit accepter tout brouillage radioélectrique subi, même si le brouillage est susceptible d'en compromettre le fonctionnement

* RF warning for Portable device:

The device has been evaluated to meet general RF exposure requirement. The device can be used in portable exposure condition without restriction.

* avertissement RF pour les appareils portables:

L'appareil a été évalué pour répondre aux exigences générales d'exposition aux radiofréquences. L'appareil peut être utilisé dans des conditions d'exposition portables sans restriction.