



## SAR EVALUATION CERTIFICATE OF COMPLIANCE

**APPLICANT: Enfora Inc.**

**APPLICANT NAME AND ADDRESS:**

Enfora Inc..  
661 East 18th Street  
Plano, Texas 75074

**DATE OF TEST:** Januray 29, 2004  
**TEST LOCATION:** MET LABORATORIES INC.  
914 West Patapsco Ave.  
Baltimore, Maryland 21230

EUT: GSM3208  
Date of Receipt: January 1, 2004  
Device Category: GSM MODEM  
RF exposure environment: Uncontrolled  
RF exposure category: Portable  
Power supply: Powered by Battery and AC/DC adaptor  
Antenna: Integrated Antenna  
Production/prototype: Identical Prototype  
Measured Standards: FCC OET 65 SUPPLEMENT C  
Modulation: GMSK  
Crest Factor: GMSK = 8  
TX Range: 1850.4 – 1909.8 MHz and 824.2 – 848.8 MHz  
RX Range: 1930.2 – 1989.8 MHz and 869.2 – 893.8 MHz  
Used TX Channels: (PCS) Low: ch 1850.4 MHz Center: ch 1880.2 MHz High: ch. 1909.8MHz  
Used TX Channels: (Cellula) Low: ch. 824.2 MHz Center: ch 836.6 MHz High: ch. 848.8 MHz  
Maximum RF Power Output: PCS1900 band: 1.0 W Conducted and 850 band: 1.8 W Conducted  
Maximum SAR Measurement (averaged over: 1g) **0.82** W/kg Body (850 band ) and **1.121** W/kg Body (PCS 1900 )

This wireless portable device has been tested in accordance with the measurement procedures specified in CENELEC EN50360 and IEEE Std. 1528-200X (July 2001), and has been shown to be capable of compliance for localized specific absorption rate (SAR) for uncontrolled environment/general population exposure limits specified in ANSI/IEEE Std. C95.3 - 2002

I attest to the accuracy of this data. All reported measurements were performed by me, or were made under my supervision, and are correct to the best of my knowledge and belief. I assume full responsibility for the completeness of these measurements and vouch for the qualifications of all persons taking them.

Len Knight  
EMC Lab Manager





Enfora Inc.

GSM3208

January 30, 2004

---

January 30, 2004

**Enfora Inc.**

661 East 18th Street  
Plano, Texas 75074

Reference: GSM3208

Dear Mr. Phillip Raymond:

Enclosed is the EMC SAR Evaluation Report for the **Enfora Inc.** GSM3208. It was tested in accordance with the measurement procedures specified in FCC OET 65 SUPPLEMENT C shown to be capable to be in compliance for localized specific absorption rate (SAR) for uncontrolled environment/general population exposure limits specified in FCC OET 65 SUPPLEMENT C.

Thank you for using the testing services of MET Laboratories. If you have any questions regarding these results or if MET can be of further assistance to you, please feel free to contact me. We appreciate your business and look forward to working with you again soon.

Kindest Regards,  
MET LABORATORIES, INC.

Marianne T. Bosley  
EMC Administrator

**Enclosures:**

DOCTEM-23 Jan 04

Certificates and reports shall not be reproduced except in full, without the written permission of MET Laboratories, Inc.

***The Nation's First Licensed Nationally Recognized Testing Laboratory***

## **Dosimetric Assessment**

### **Test Report**

for the

**Enfora Inc.**  
**GSM3208**

**Tested and Evaluated  
In Accordance With  
FCC OET 65 SUPPLEMENT C**

### **MET REPORT: EMC14796-SAR-FCC**

January 30, 2004

PREPARED FOR:

**Enfora Inc.**  
661 East 18th Street  
Plano, Texas 75074

PREPARED BY:

MET Laboratories, Inc.  
914 West Patapsco Avenue  
Baltimore, Maryland 21230-3432

# Dosimetric Assessment TEST REPORT




*for the*

**Enfora Inc.**  
GSM3208

**In Accordance With  
FCC OET 65 SUPPLEMENT C**

*Prepared for*

Enfora Inc.  
661 East 18th Street  
Plano, Texas 75074

<b>Report Prepared By</b>	Marianne T. Bosley EMC ADMINISTRATOR	
<b>Report Reviewed By</b>	Liming Xu TEST ENGINEER	
<b>Final Review By</b>	EMC LAB MANAGER	

**Engineering Statement:** The measurements shown in this report were made in accordance with the procedures specified in FCC OET 65 SUPPLEMENT C. I assume full responsibility for the accuracy and completeness of these measurements, and for the qualifications of all persons taking them. It is further stated that upon the basis of the measurements made, the equipment evaluated is capable of compliance for localized specific absorption rate (SAR) for uncontrolled environment/general population exposure limits specified in ANSI/IEEE Std. C95.3-2002.



Len Knight  
EMC LAB MANAGER



## Quick Links

- [\*Summary of test Report\*](#)
- [\*EUT Description\*](#)
- [\*Test Conditions\*](#)
- [\*Host Laptops Used\*](#)
- [\*System Validation\*](#)
- [\*SAR results summary\*](#)
- [\*SAR Area Scans\*](#)
- [\*Setup Pictures\*](#)
- [\*Measurement System\*](#)



## OBJECTIVE

The objective of the procedure was to perform a dosimetric assessment one of the **GSM3208** card. The measurements have been carried out with the dosimetric assessment system "SARA2", and were made according to the FCC OET 65 SUPPLEMENT C for evaluating compliance of mobile and portable devices with FCC OET 65 SUPPLEMENT C limits for human exposure in the general population to radio frequency emissions.

## SAR DEFINITION

Specific absorption rate (SAR) is the biological relevant parameter describing the effects of electromagnetic fields in the frequency range of interest. It is a measure of the power absorbed per unit mass and may be spatially averaged over the total mass of an exposed body or its parts.

In mathematical terms Specific Absorption Rate (SAR) is defined as the time derivative (rate) of the incremental energy absorbed by (dissipated in) an incremental mass contained in a volume element of a given density. It is also defined as the rate of RF energy absorption per unit mass at a point in an absorbing body as given below. The SAR is calculated from the r.m.s. electric field strength  $E$  inside the human body, the conductivity  $F$  and the mass density  $D$  of the biological tissue:

$$SAR = \frac{|E|^2 \sigma}{\rho}$$

**SAR is expressed in units of Watts per Kilogram (W/kg)**

$F$  = Conductivity of the tissue-simulant material (S/m)

$D$  = Mass density of the tissue-simulant material (kg/m<sup>3</sup>)

$E$  = Total RMS electric field strength (V/m)

NOTE: The primary factors that control rate of energy absorption were found to be the wavelength of the incident field in relations to the dimensions and geometry of the irradiated organism, the orientation of the organism in relation to the polarity of field vectors, the presence of reflecting surfaces, and whether conductive contact is made by the organism with a ground plane.



## SUMMARY FOR SAR TEST REPORT

<b>EUT</b>	GSM3208
<b>Date of receipt</b>	January 1, 2004
<b>Date of Test</b>	January 29, 2004
<b>RF Exposure Category</b>	Uncontrolled
<b>Measured Standard</b>	FCC OET 65 SUPPLEMENT C
<b>Measurement done by</b>	Liming Xu

### Maximum Results Found during SAR Evaluation

The equipment is deemed to fulfill the requirements if the measured values are less than or equal to the limit.

### Body Worn Configuration

Test Configurations	Power (dBm)	Channel	Frequency (GHz)	Max. 1g SAR (W/kg)
Body ( 850 band )	32.65	251	848.8	0.82
Body ( PCS1900 )	29.97	810	1909.8	1.121

Table 2: The Max SAR value for Body Testing (The power mentioned above is the Conducted )

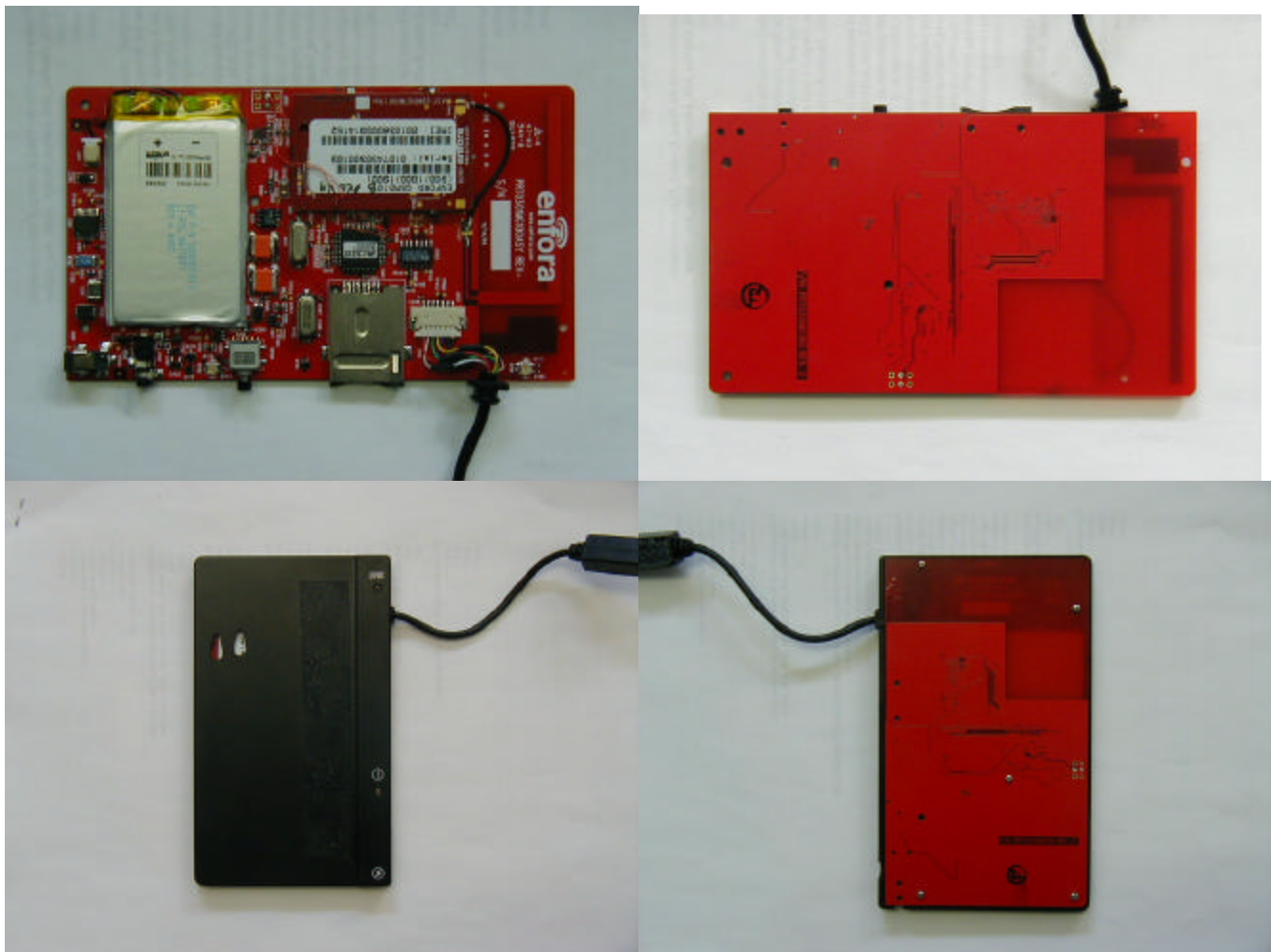
## DESCRIPTION OF TESTED DEVICE

<b>Modes of Operation</b>	Wireless connection for Modem access
<b>Modulation Mode(s)</b>	GMSK
<b>Duty Cycle(s) (=1/ Crest Factor)</b>	Crest Factor=8
<b>Transmitter Frequency Range</b>	1850.4 – 1909.8 MHz and 824.2 – 848.8 MHz

## Pictures of EUT







### Description of the Antenna

Integrated Antenna.

### Battery or AC/DC adaptor Options

## TEST CONDITIONS

### Environment

<b>Test Environment</b>	Dedicated test area
<b>Ambient temperature</b>	24.4°C ± 1 °C
<b>Tissue simulating liquid temperature</b>	24.2°C ± 1 °C
<b>Shielded Chamber</b>	Anechoic material strategically positioned to minimize room reflections
<b>Ambient Noise</b>	Very low

**Table 3: Summary of Test Environment conditions**

### Test Signal, Frequencies and Output Power

1. The measurements are first performed at the middle channel of the operating band of the EUT. If the SAR value of the middle channel for each test configuration (Left, Right, Cheek, Tilt, Extended, Retracted) is at least 3 dB below the SAR limit, testing at the high and low channels is optional for such test configurations.
2. The EUT was set to maximum power level during all the tests. Power output was measured before and after each test.
3. T The EUT was equipped with a special software, which allowed the EUT transmitting Maximum RF power with selectable channel

## TEST DETAILS

### Tissue Recipes

#### TYPICAL COMPOSITION OF INGREDIENTS FOR LIQUID TISSUE PHANTOMS

Ingredients (% by weight)	Frequency (MHz)									
	450		835		915		1900		2450	
Tissue Type	Head	Body	Head	Body	Head	Body	Head	Body	Head	Body
Water	38.56	51.16	41.45	52.4	41.05	56.0	54.9	70.0	54	73.1
Salt (NaCl)	3.95	1.49	1.45	1.4	1.35	0.76	0.18	0.32	0.2	0.3
Sugar	56.32	46.78	56.0	45.0	56.5	41.76	0.0	0.0	0.0	0.0
HEC	0.98	0.52	1.0	1.0	1.0	1.21	0.0	0.0	0.0	0.0
Bactericide	0.19	0.05	0.1	0.1	0.1	0.27	0.0	0.0	0.0	0.0
Triton X-100	0.0	0.0	0.0	0.0	0.0	0.0	0.0	0.0	0.0	0.0
DGBE	0.0	0.0	0.0	0.0	0.0	0.0	44.92	29.68	45.8	26.6
Dielectric Constant ( Measured ) Deviation ( % )					40.56 (-2.3)	55.8 (1.5)	40.0 ( 0 )	53.1 (-0.3)		
Conductivity (S/m) ( Measured ) Deviation ( % )					1.0 ( 2.0 )	1.07 ( 0.9 )	1.38 (-1.4)	1.50 (-1.3)		
Dielectric Constant (Target)	43.5	56.7	41.5	55.2	41.5	55.0	40.0	53.3	39.2	52.7
Conductivity (S/m) (Target)	0.87	0.94	0.90	0.97	0.98	1.06	1.40	1.52	1.80	1.95

## System Validation

*Following equipment is used for the system validation:*

Signal Generator (Agilent E4432B)  
 RF Amplifier (Mini Circuits ZHL-42.)  
 Dual Directional Coupler (HP 778D)  
 The HP 8564E Spectrum Analyzer (used for RF power measurement)  
 Cables, Attenuate and Adapters

The recommended (IEEE Std 1528) set-up was used:

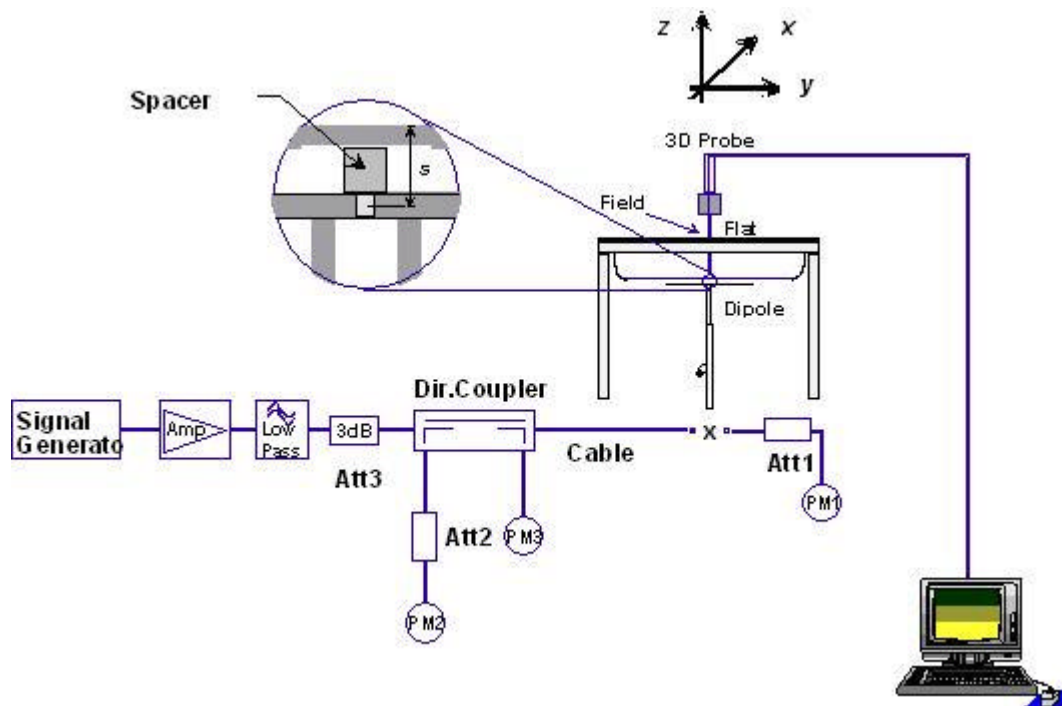
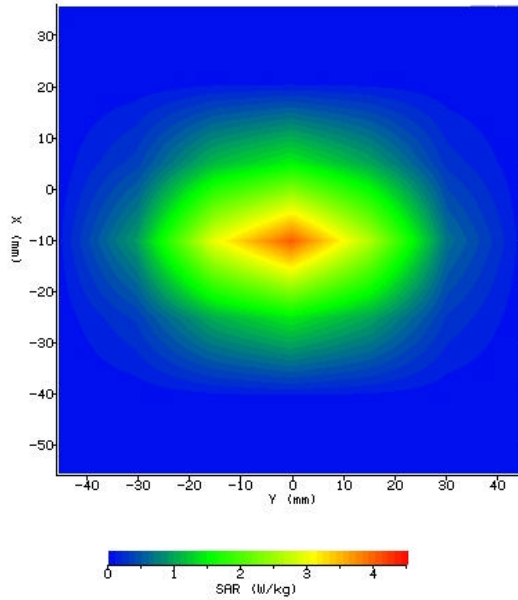


Figure 13. Performance Check Setup Diagram



## Performance Checking

**Test Position:** Flat Phantom  
**Test Date:** January 29, 2004  
**Antenna Position:** Balanced Dipole  
**Probe:** DCPs ( 20, 20, 20 ) IXP-050/SN 0107 – SARf (0.366,0.366,0.366) Probe Cal date 7/15/2003  
**Med. Parameters:** Head:  $\epsilon_r = 40$  ;  $s = 1.38$   
**Pre Test Room Temp.** 24.3C  
**Post Test Room Temp.** 24.6C  
**Pre Test Simulant Liquid Temp.** 24.5C  
**Post Test Simulant Liquid Temp.** 24.7C  
**CH** NA  
**SAR Drift** <5%  
**SAR (1g):** 37.66



Validation Measurement – 1800 MHz in Head tissue

Simulant	Freq [MHz]	Room Temp [C]	Liquid Temp [C]	Parameters	Target Value	Measured Value	Deviation [%]	Limit [%]
Head	1800	24.3	24.5	$\epsilon_r$	40	40	0	± 5%
				$\sigma$	1.40	1.38	-1.4	± 5%
				1g SAR	38.1	37.66	-1.2	± 10%

Table 6. System Validation Results

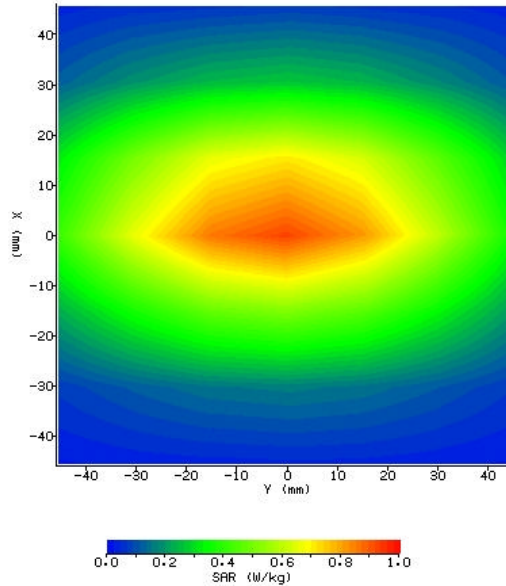
**NOTE:**

RF Forward power = 0.10W. The results are normalized to 1 Watts (CW) RF forward power  
 Validation was done within 100MHz of test frequency



## Performance Checking

**Test Position:** Flat Phantom  
**Test Date:** January 29, 2004  
**Antenna Position:** Balanced Dipole  
**Probe:** DCPs ( 20, 20, 20 ) IXP-050/SN 0107 – SARf (0.303,0.303,0.303) Probe Cal date 7/15/2003  
**Med. Parameters:** Head:  $\epsilon_r = 40.56$  ;  $s = 0.98$   
**Pre Test Room Temp.** 24.3C  
**Post Test Room Temp.** 24.6C  
**Pre Test Simulant Liquid Temp.** 24.5C  
**Post Test Simulant Liquid Temp.** 24.7C  
**CH** NA  
**SAR Drift** <5%  
**SAR (1g):** 10.1



Validation Measurement – 850 MHz in Head tissue

Simulant	Freq [MHz]	Room Temp [C]	Liquid Temp [C]	Parameters	Target Value	Measured Value	Deviation [%]	Limit [%]
Head	850	24.3	24.5	$\epsilon_r$	<b>41.5</b>	40.56	-2.2	$\pm 5\%$
				$\sigma$	<b>0.97</b>	0.98	1.0	$\pm 5\%$
				1g SAR	<b>10.8</b>	10.1	-6.5	$\pm 10\%$

Table 6. System Validation Results

**NOTE:**

RF Forward power = 0.10W. The results are normalized to 1 Watts (CW) RF forward power  
 Validation was done within 100MHz of test frequency



---

## SAR Results Summary

---

## MEASUREMENT RESULTS

	Description	Power dBm	Channel	Frequency (MHz)	Max. 1g SAR (W/kg)	2 <sup>nd</sup> spot (W/kg)
1	The EUT bottom towards and touching the Phantom	32.41	128	824.2	0.779	N/A
2	The EUT bottom towards and touching the Phantom	32.43	190	836.6	0.806	N/A
3	The EUT bottom towards and touching the Phantom	32.65	251	848.8	0.820	N/A
4	The EUT top towards and touching the Phantom	32.43	190	836.6	0.107	N/A
5	The EUT side towards and touching the Phantom	32.43	190	836.6	0.159	N/A

Table 7. Measured Body SAR results GSM900

NOTES:

- 1 The measurements are first performed at the middle channel of the operating band of the EUT. If the SAR value of the middle channel for each test configuration (Left, Right, Cheek, Tilt, Extended, Retracted) is at least 3 dB below the SAR limit, testing at the high and low channels is optional for such test configurations.
- 2 The test data reported are the worst-case SAR values with the antenna-head position set in a typical configuration.
- 3 All modes of operation are investigated and worst cases are reported.
- 4 Multiple Hot Spots                      TNone                      SAR was less than 3 dB of the highest peak                      Reported
- 5 Battery Type                              TStandard                      Extended                      Both
- 6 Power Measured                        TConducted                      EIRP                      ERP
- 7 SAR Measurement System              SARA2
- 8 SAR Configuration                      Head                      TBody
- 9 Before the measurements, the test site ambient conditions were checked performing SAR measurements with the EUT powered off.





## MEASUREMENT RESULTS

	Description	Power dBm	Channel	Frequency (MHz)	Max. 1g SAR (W/kg)	2 <sup>nd</sup> spot (W/kg)
1	The EUT bottom towards and touching the Phantom	29.62	512	1850.4	1.108	N/A
2	The EUT bottom towards and touching the Phantom	29.81	662	1880.2	1.054	N/A
3	The EUT bottom towards and touching the Phantom	29.96	810	1909.8	1.121	N/A
4	The EUT top towards and touching the Phantom	29.81	662	1880.2	0.761	N/A
5	The EUT side towards and touching the Phantom	29.81	662	1880.2	0.108	N/A

Table 8. Measured Body SAR results DCS1800

NOTES:

- 1 The measurements are first performed at the middle channel of the operating band of the EUT. If the SAR value of the middle channel for each test configuration (Left, Right, Cheek, Tilt, Extended, Retracted) is at least 3 dB below the SAR limit, testing at the high and low channels is optional for such test configurations.
- 2 The test data reported are the worst-case SAR values with the antenna-head position set in a typical configuration.
- 3 All modes of operation are investigated and worst cases are reported.
- 4 Multiple Hot Spots                      TNone                      SAR was less than 3 dB of the highest peak                      Reported
- 5 Battery Type                              TStandard                      Extended                      Both
- 6 Power Measured                        TConducted                      EIRP                      ERP
- 7 SAR Measurement System              SARA2
- 8 SAR Configuration                      Head                      TBody
- 9 Before the measurements, the test site ambient conditions were checked performing SAR measurements with the EUT powered off.

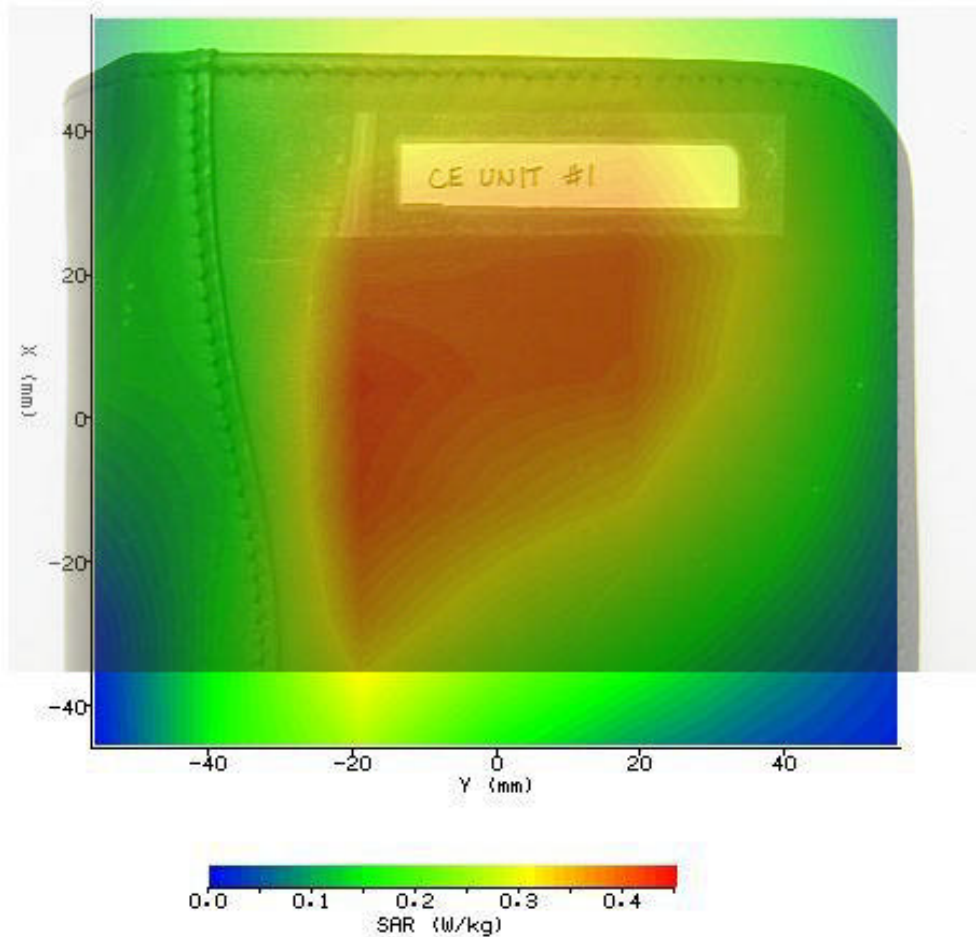


---

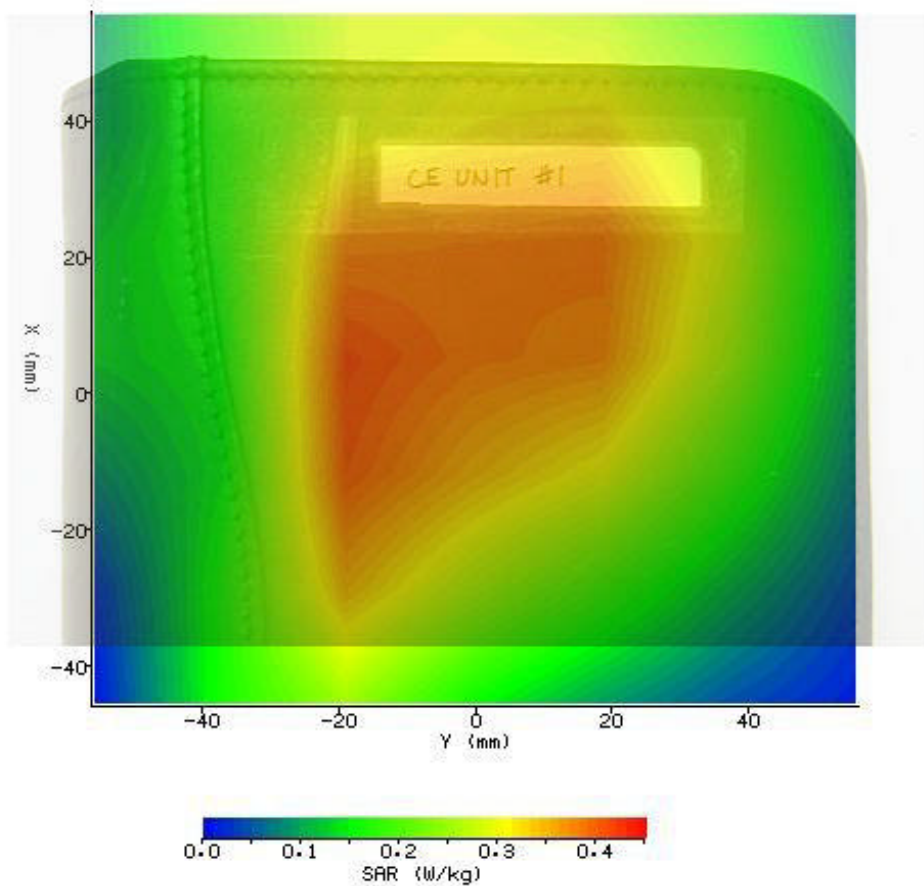
## **SAR DISTRIBUTIONS (AREA SCANS)**

---

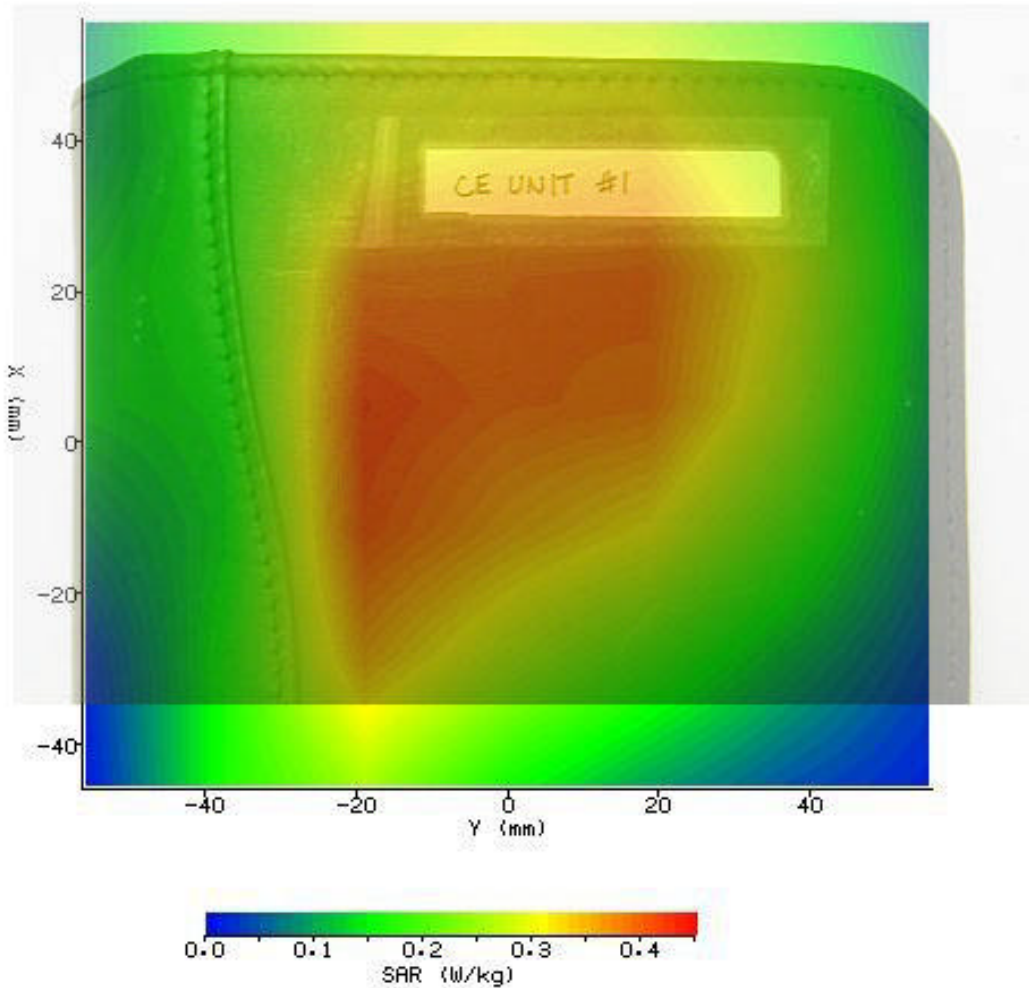
**Test Position:** Configuration 1 Per Test process Table 7 GSM 900  
Test Date: January 29, 2004  
Antenna Position: Attached  
Probe: DCPs ( 7.4, 7.8, 7.7 ) IXP-050/SN 0107 – SARf (0.315,0.315,0.315) Probe Cal date 7/15/2003  
Med. Parameters: Body:  $\epsilon_r = 55.8$ ;  $s = 1.07$   
Pre Test Room Temp. 23.9C  
Post Test Room Temp. 23.6C  
Pre Test Simulant Liquid Temp. 23.5C  
Post Test Simulant Liquid 23.7C  
CH 975; Crest Factor=8  
SAR Drift <5%  
SAR (1g) W/Kg 0.350



**Test Position:** Configuration 2 Per Test process Table 7 GSM 900  
Test Date: January 29, 2004  
Antenna Position: Attached  
Probe: DCPs ( 7.4, 7.8, 7.7 ) IXP-050/SN 0107 – SARf (0.315,0.315,0.315) Probe Cal date 7/15/2003  
Med. Parameters: Body:  $\epsilon_r = 55.8$ ;  $s = 1.07$   
Pre Test Room Temp. 23.5C  
Post Test Room Temp. 23.6C  
Pre Test Simulant Liquid Temp. 23.5C  
Post Test Simulant Liquid 23.7C  
CH 31; Crest Factor=8  
SAR Drift <5%  
SAR (1g) W/Kg 0.359



**Test Position:** Configuration 3 Per Test process Table 7 GSM 900  
Test Date: January 29, 2004  
Antenna Position: Attached  
Probe: DCPs ( 7.4, 7.8, 7.7 ) IXP-050/SN 0107 – SARf (0.315,0.315,0.315) Probe Cal date 7/15/2003  
Med. Parameters: Body:  $\epsilon_r = 55.8$ ;  $s = 1.07$   
Pre Test Room Temp. 23.8C  
Post Test Room Temp. 23.6C  
Pre Test Simulant Liquid Temp. 23.5C  
Post Test Simulant Liquid 23.7C  
CH 124; Crest Factor=8  
SAR Drift <5%  
SAR (1g) W/Kg 0.359





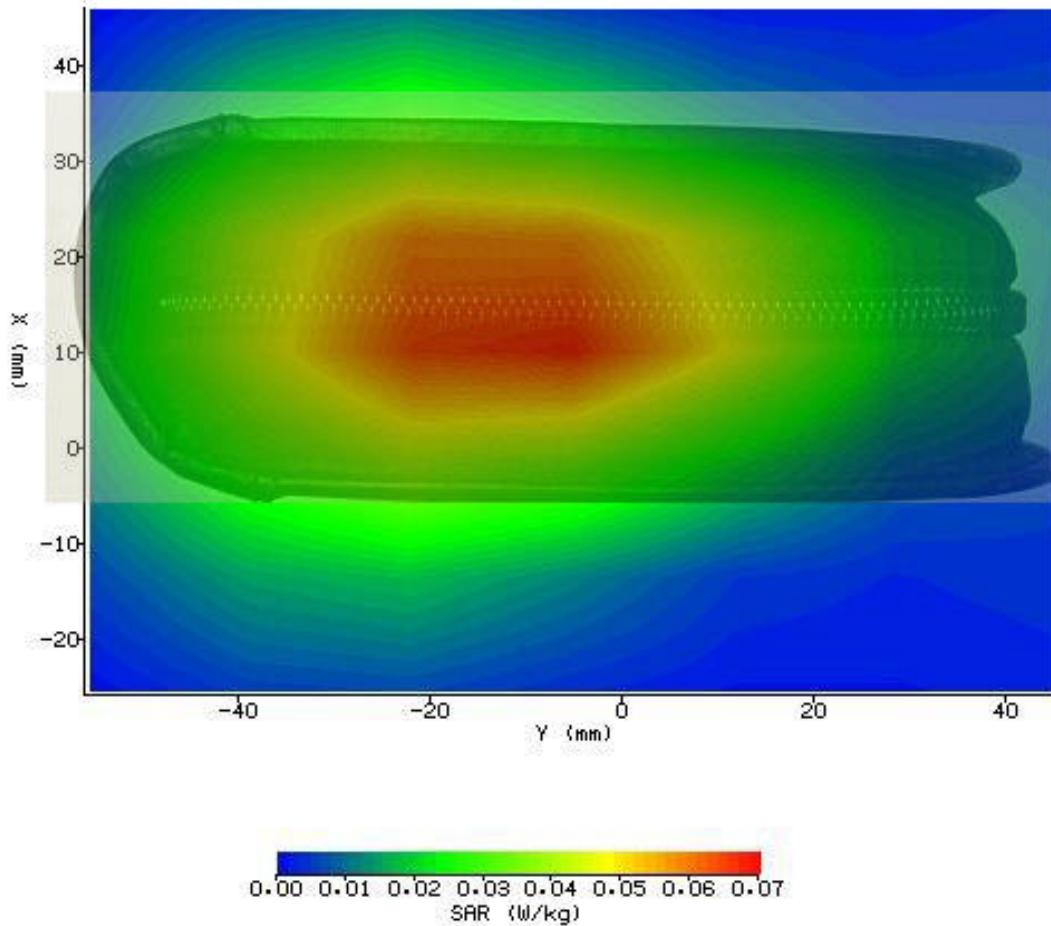
Enfora Inc.

GSM3208

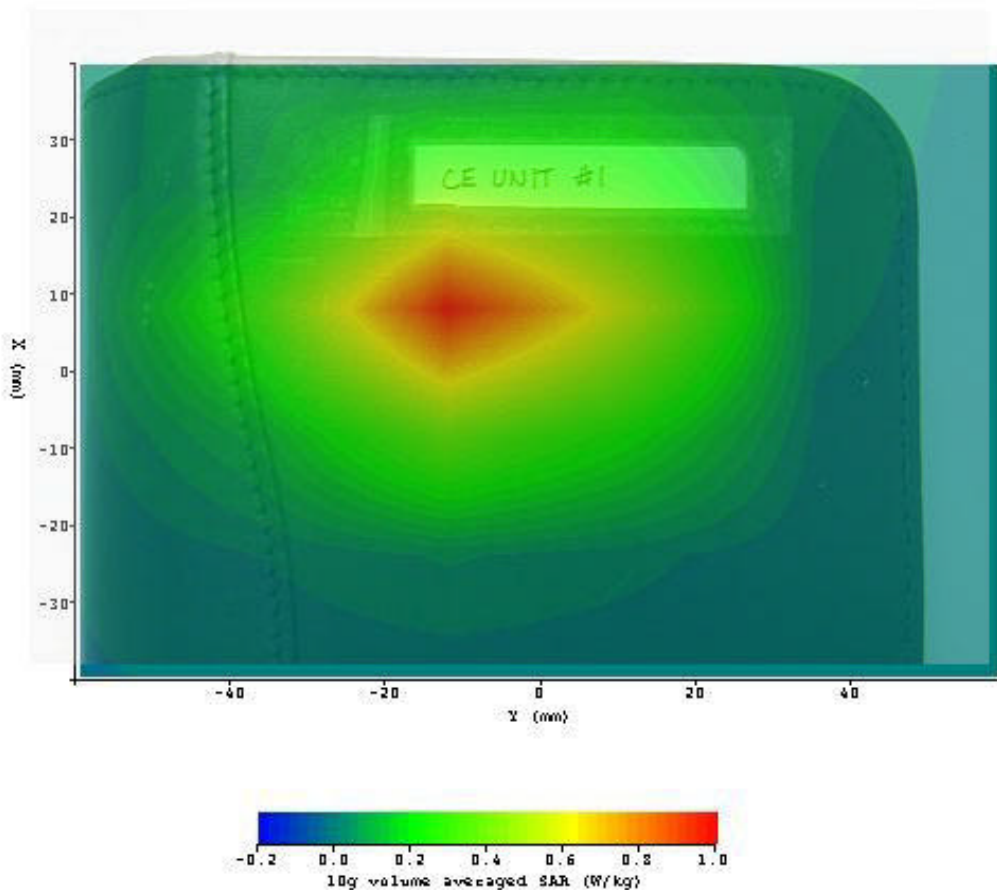
January 30, 2004

---

<b>Test Position:</b>	Configuration 5 Per Test process Table 7 GSM 900
Test Date:	January 29, 2004
Antenna Position:	Attached
Probe: DCPs ( 7.4, 7.8, 7.7 )	IXP-050/SN 0107 – SARf (0.315,0.315,0.315) Probe Cal date 7/15/2003
Med. Parameters:	Body: $\epsilon_r = 55.8$ ; $s = 1.07$
Pre Test Room Temp.	23.3C
Post Test Room Temp.	23.6C
Pre Test Simulant Liquid Temp.	23.5C
Post Test Simulant Liquid	23.7C
CH 31;	Crest Factor=8
SAR Drift	<5%
SAR (1g) W/Kg	0.05



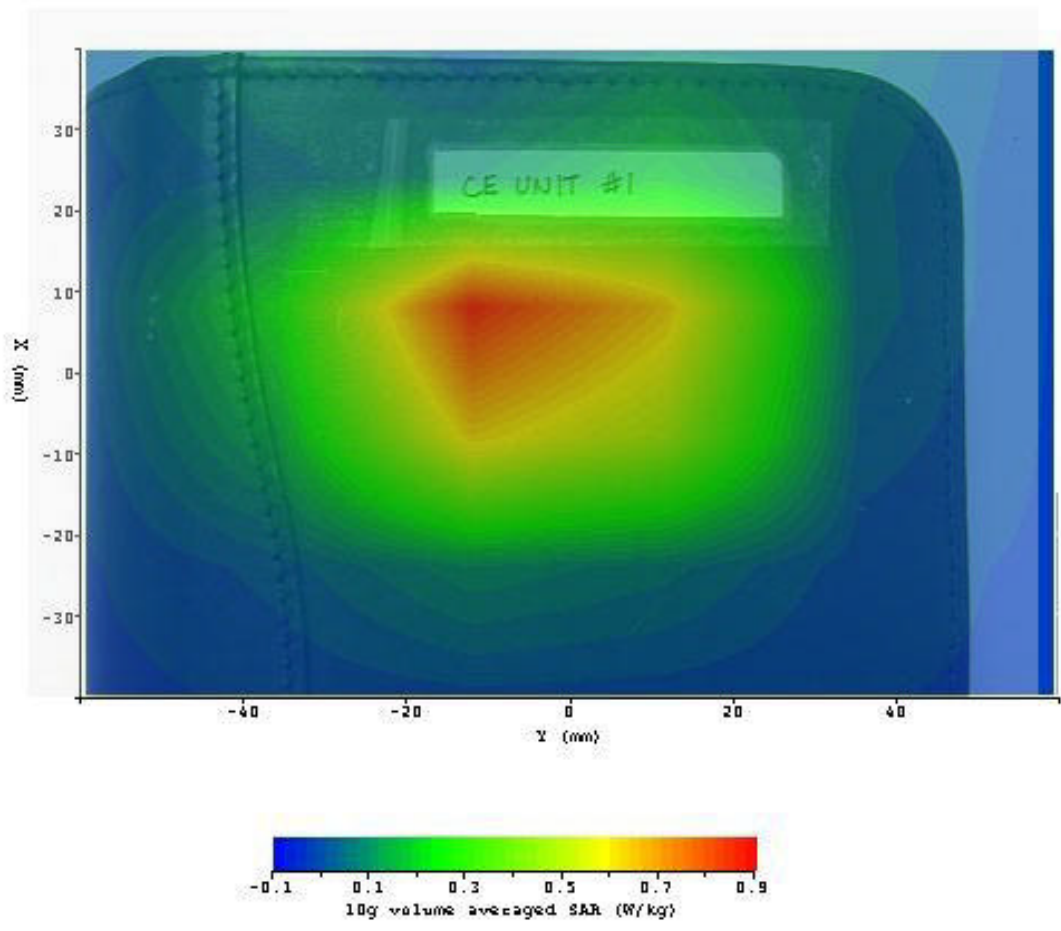
<b>Test Position:</b>	Configuration 1 Per Test process Table 8 DCS 1800
Test Date:	January 29, 2004
Antenna Position:	Attached
Probe: DCPs ( 7.4, 7.8, 7.7 )	IXP-050/SN 0107 – SARf (0.387,0.387,0.387) Probe Cal date 7/15/2003
Med. Parameters:	Body: $\epsilon_r = 53.1$ ; $s = 1.50$
Pre Test Room Temp.	23.3C
Post Test Room Temp.	23.6C
Pre Test Simulant Liquid Temp.	23.5C
Post Test Simulant Liquid	23.7C
CH 512 ;	Crest Factor=8
SAR Drift	<5%
SAR (1g) W/Kg	0.275



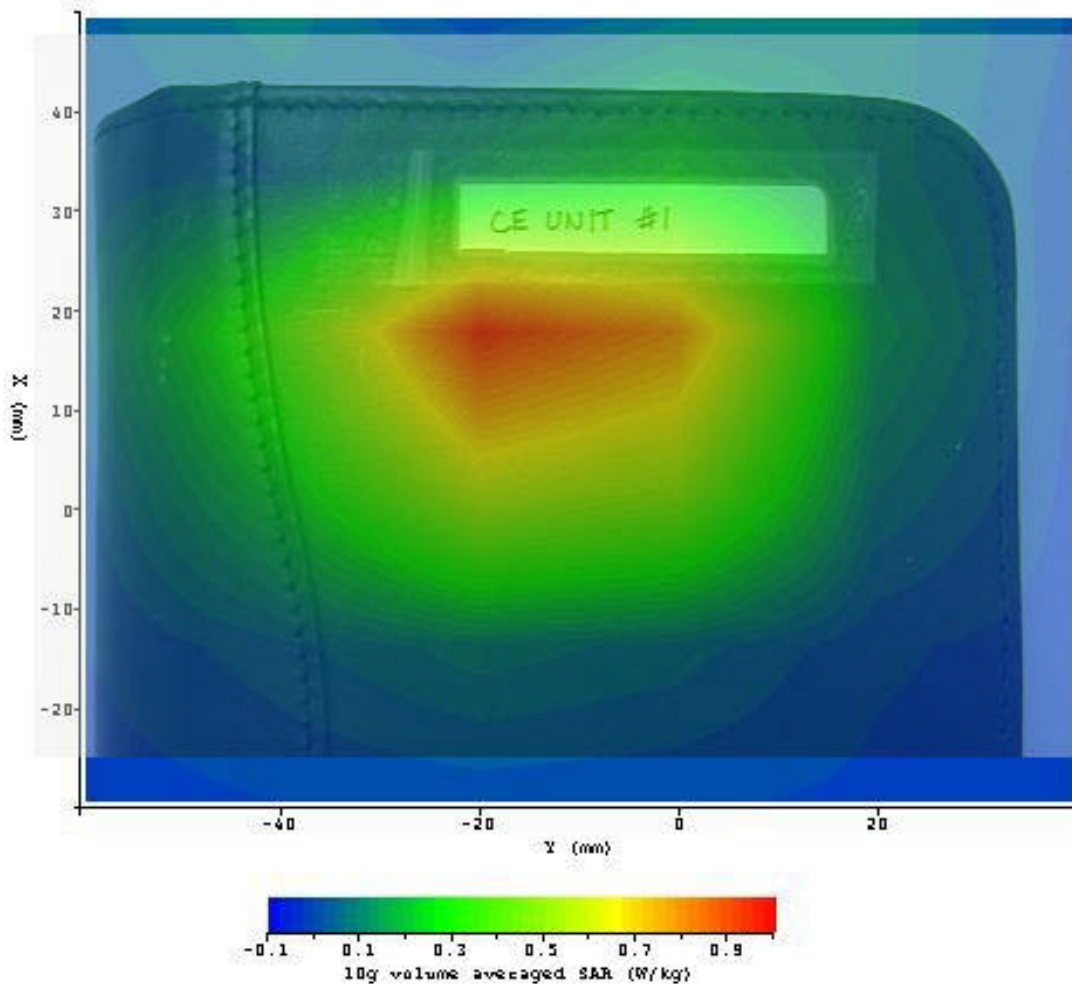




**Test Position:** Configuration 2 Per Test process Table 8 DCS 1800  
 Test Date: January 29, 2004  
 Antenna Position: Attached  
 Probe: DCPs ( 7.4, 7.8, 7.7 ) IXP-050/SN 0107 – SARf (0.387,0.387,0.387) Probe Cal date 7/15/2003  
 Med. Parameters: Body:  $\epsilon_r = 53.1$ ;  $s = 1.50$   
 Pre Test Room Temp. 23.3C  
 Post Test Room Temp. 23.6C  
 Pre Test Simulant Liquid Temp. 23.5C  
 Post Test Simulant Liquid 23.7C  
 CH 699; Crest Factor=8  
 SAR Drift <5%  
 SAR (1g) W/Kg 0.28



<b>Test Position:</b>	Configuration 3 Per Test process Table 8 DCS 1800
Test Date:	January 29, 2004
Antenna Position:	Attached
Probe: DCPs (7.4, 7.8, 7.7)	IXP-050/SN 0107 – SARf (0.387,0.387,0.387) Probe Cal date 7/15/2003
Med. Parameters:	Body: $\epsilon_r = 53.1$ ; $s = 1.50$
Pre Test Room Temp.	23.3C
Post Test Room Temp.	23.6C
Pre Test Simulant Liquid Temp.	23.5C
Post Test Simulant Liquid	23.7C
CH 885;	Crest Factor=8
SAR Drift	<5%
SAR (1g) W/Kg	0.301





Enfora Inc.

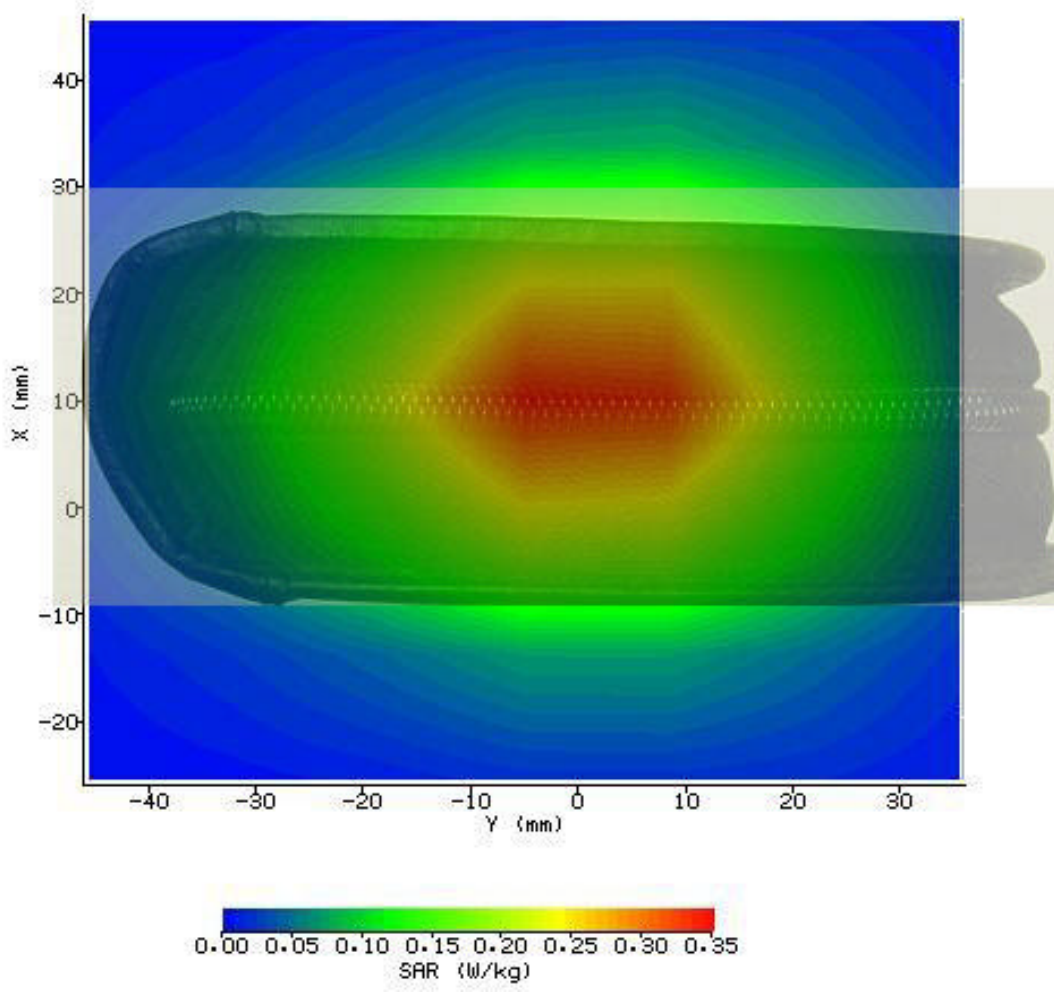
GSM3208

January 30, 2004

---



**Test Position:** Configuration 5 Per Test process Table 8 DCS 1800  
Test Date: January 29, 2004  
Antenna Position: Attached  
Probe: DCPs ( 7.4, 7.8, 7.7 ) IXP-050/SN 0107 – SARf (0.387,0.387,0.387) Probe Cal date 7/15/2003  
Med. Parameters: Body:  $\epsilon_r = 53.1$ ;  $s = 1.50$   
Pre Test Room Temp. 23.3C  
Post Test Room Temp. 23.6C  
Pre Test Simulant Liquid Temp. 23.5C  
Post Test Simulant Liquid 23.7C  
CH 699; Crest Factor=8  
SAR Drift <5%  
SAR (1g) W/Kg 0.234





---

## Setup Pictures

---

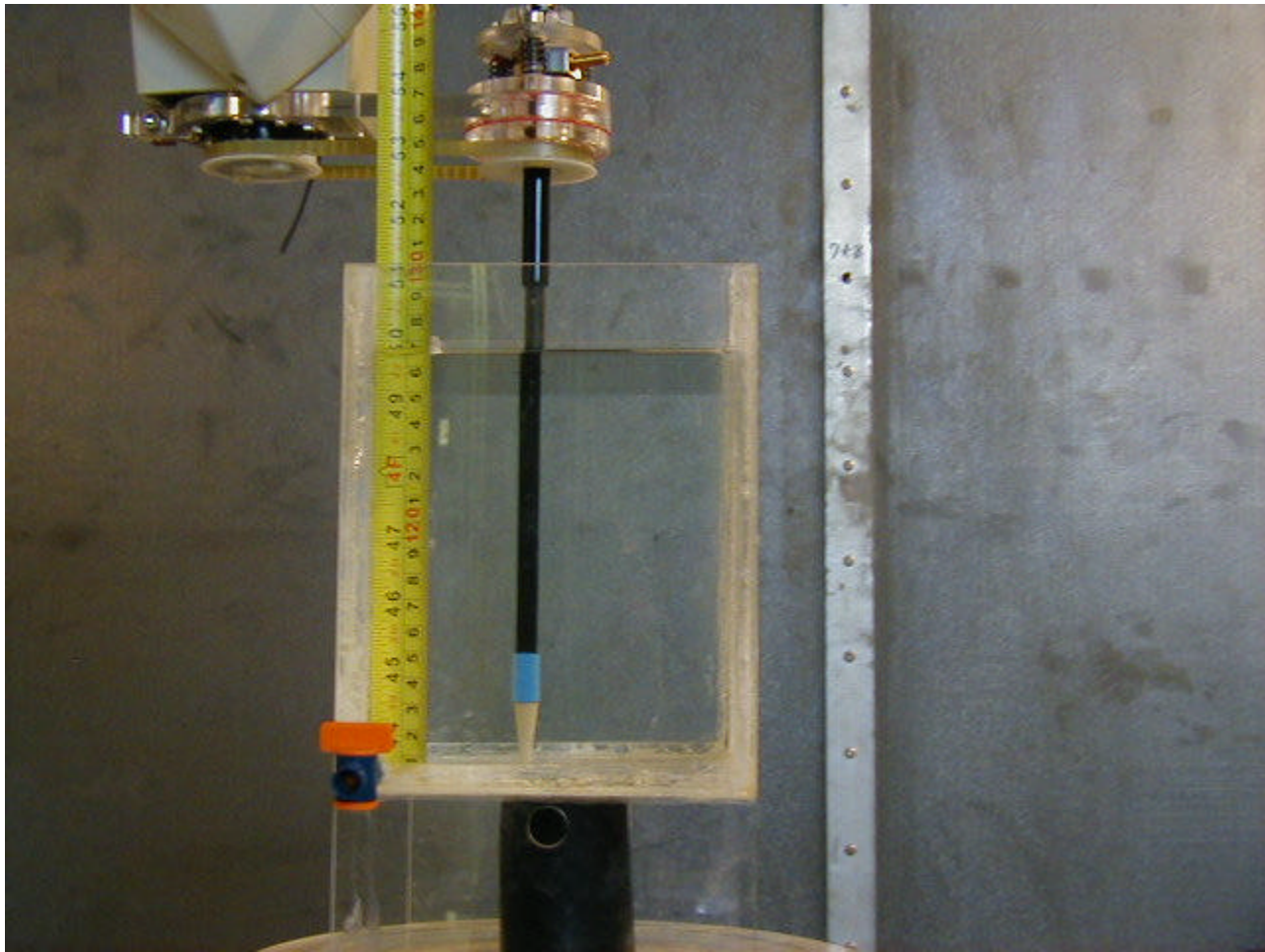


Figure S0. Measurement of the body liquid phantom depth ( 17 cm )



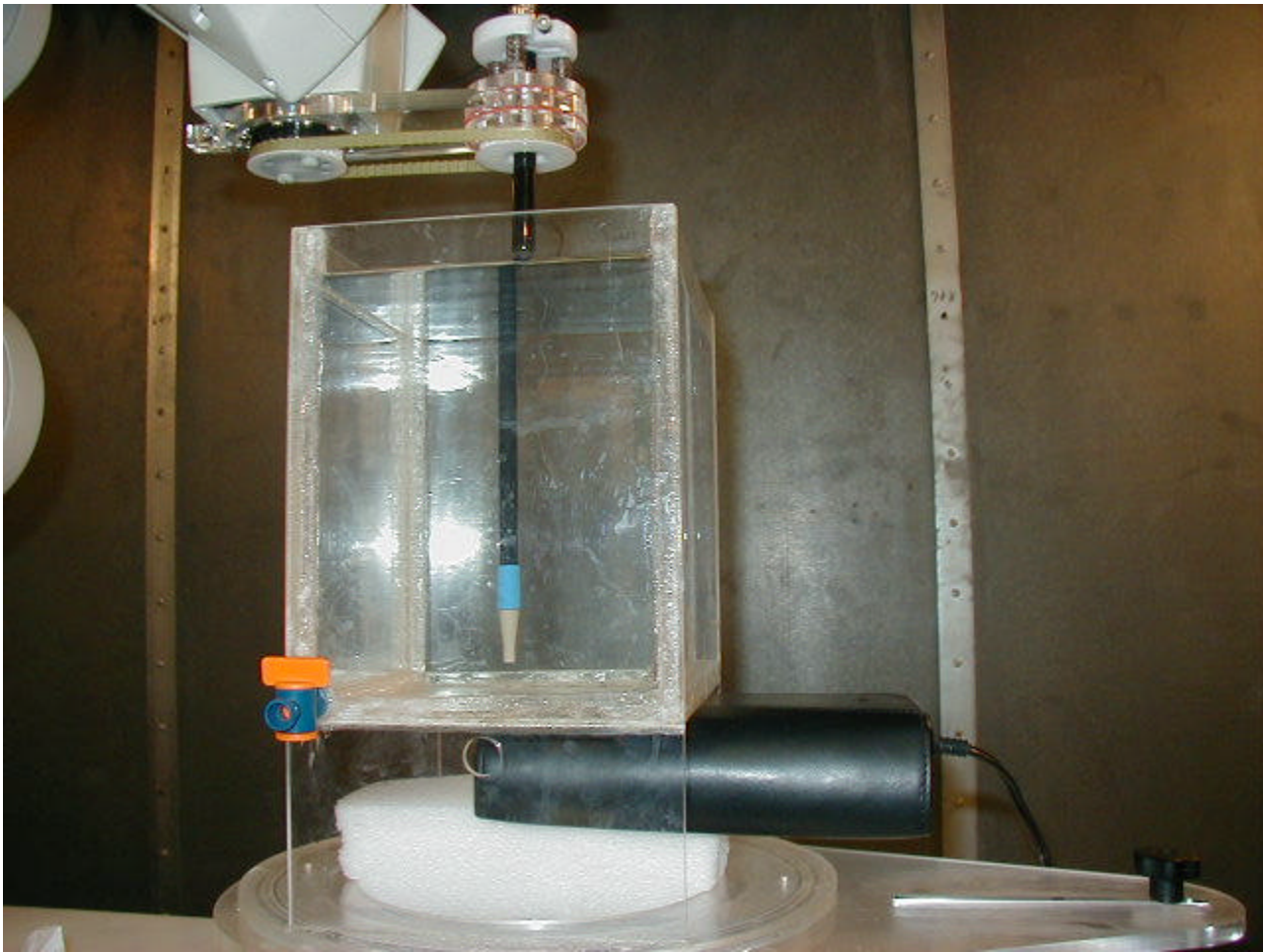


Figure S1. Setup Configuration 1, 2 and 3 of the Table 7 and 8



Enfora Inc.

GSM3208

January 30, 2004

---



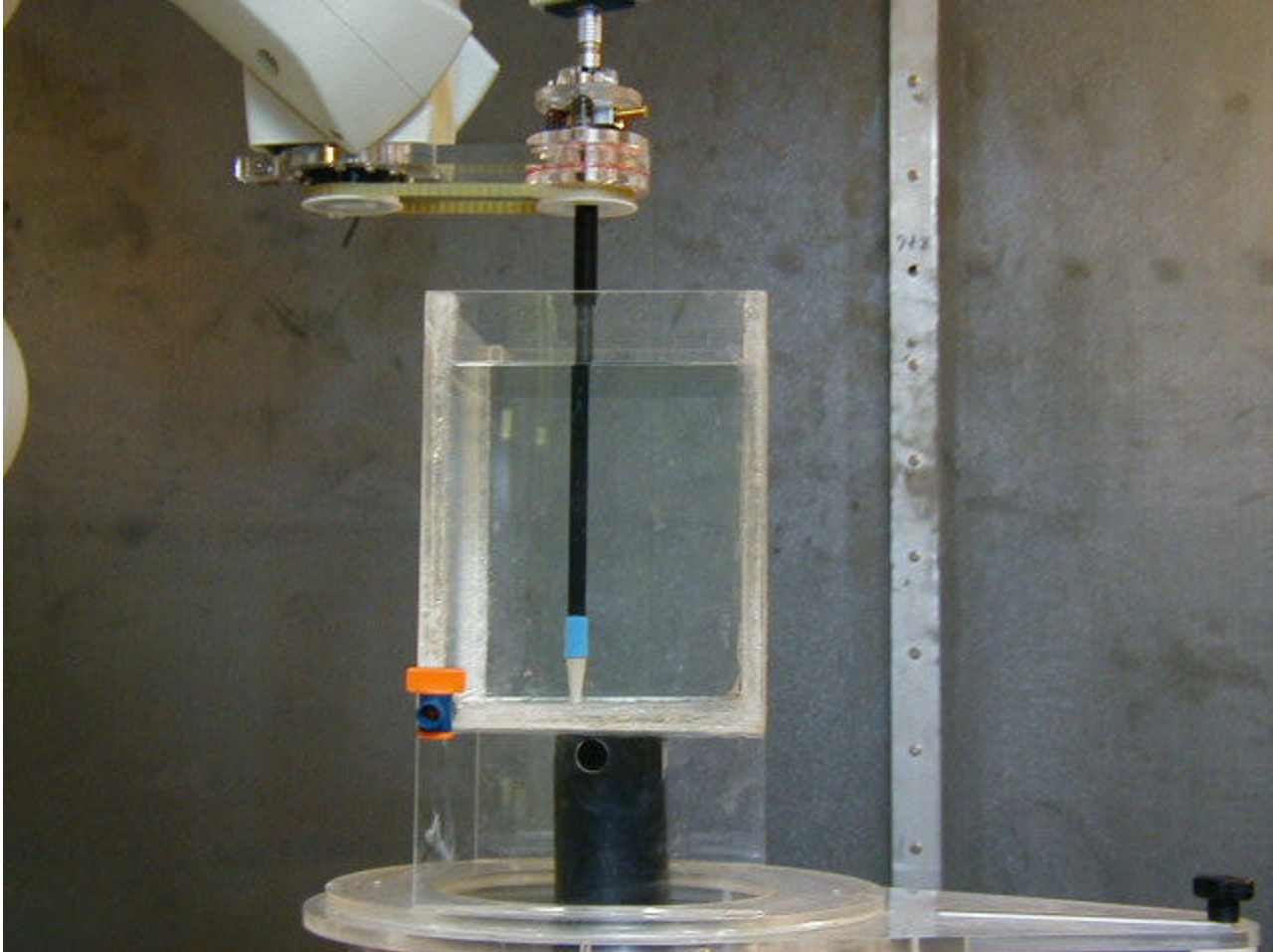


Figure S2. Setup Configuration 5 of Table 7 and 8



---

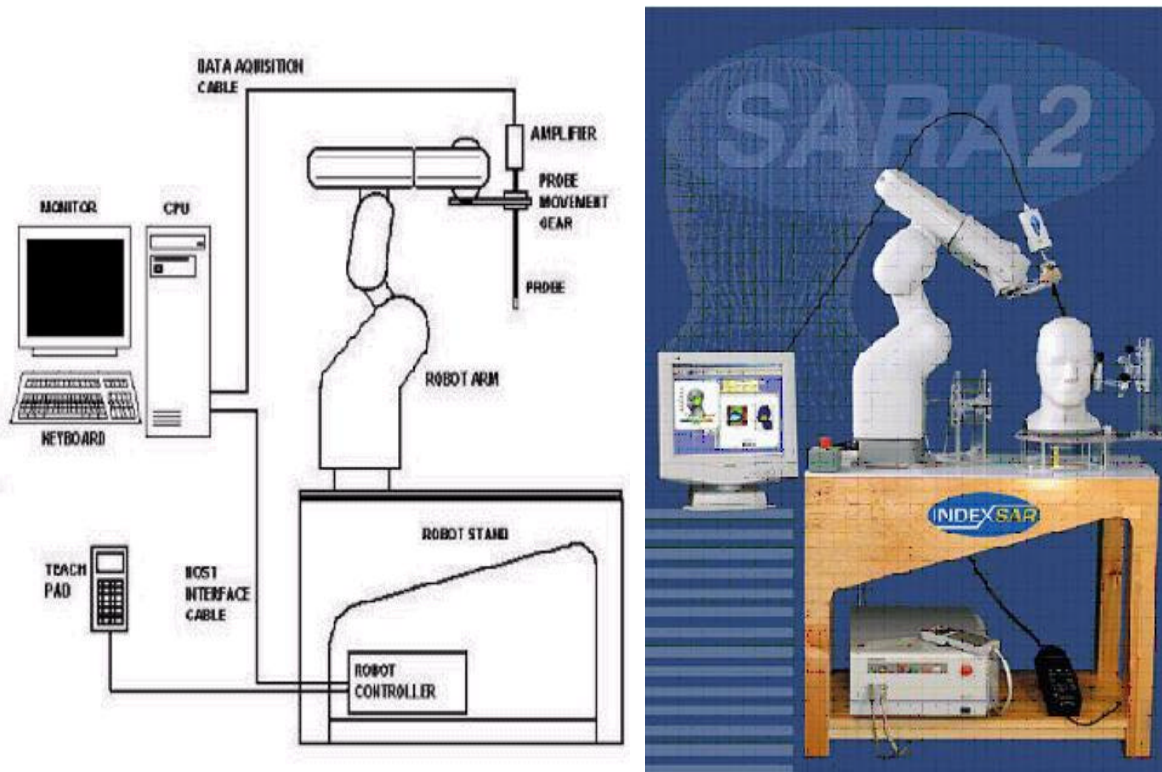
## Measurement System

---

**Measurement System - SARA2 System Specification**

The SAR measurement system being used is the IndexSAR SARA2 system, which consists of a Mitsubishi RV-E2 6-axis robot arm and controller, IndexSAR probe and amplifier and SAM phantom Head Shape. The robot is used to articulate the probe to programmed positions inside the phantom head to obtain the SAR readings from the EUT.

The system is controlled remotely from a PC, which contains the software to control the robot and data acquisition equipment. The software also displays the data obtained from test scans.



**Figure 9. Block Diagram of SARA 2 System**

The position and digitized shape of the phantom heads/flat baths are made available to the software for accurate positioning of the probe and reduction of set-up time.

The SAM phantom heads/flat baths are individually digitized using a Mitutoyo CMM machine to a precision of 0.001mm. The data is then converted into a shape format for the software, providing an accurate description of the phantom shell.

In operation, the system first performs an area (2D) scan at a fixed depth within the liquid from the inside wall of the phantom. When the maximum SAR point has been found, the system will then carry out a 3D scan centred at that point to determine volume averaged SAR level.

## Specifications

### ROBOTIC SYSTEM



<b>Type:</b>	Mitsubishi Movemaster RV-2E/ 6 Axis vertical articulated robot
<b>Dimensions (Robot):</b>	Height: 790mm (in home position)
<b>Dimensions (Robot Stand):</b>	1010L x 450W x 820H mm
<b>Weight:</b>	Approx. 36 kgf
<b>Position Repeatability:</b>	+/- 0.04mm
<b>Drive Method:</b>	AC servomotor

### CONTROLLER UNIT



<b>Type:</b>	CR-E116
<b>Dimensions:</b>	422W x 512D x 202H mm
<b>Weight:</b>	Approx. 27 kgf
<b>Power source:</b>	single-phase AC200V

### E-FIELD PROBE



<b>Type:</b>	Three orthogonal dipole sensors arranged on triangular, interlocking substrates Overall length: 350mm
<b>Dimensions:</b>	Tip length: 10mm Body diameter: 12mm Tip diameter: 5mm
<b>Isotropy:</b>	Distance from probe tip to dipole centers: 2.5mm +/- 0.5 dB in brain liquids (rotation about probe axis) +/- 1.0 dB in brain liquids (rotation normal to probe axis)
<b>Calibration:</b>	Indexsar calibration in brain tissue simulating liquids at frequencies of 900 MHz and 1800 MHz
<b>Dynamic Range:</b>	0.01 W/kg to 100 W/kg in liquid. Linearity +/- 0.2 W/kg

**Data Acquisition**

<b>Processor</b>	Pentium III
<b>Clock Speed</b>	700MHz
<b>Operating System</b>	Windows 98 or 2000
<b>I/O</b>	Two RS232, or One RS232 and One USB
<b>Software</b>	SARA2 VPM2p1a
<b>Memory</b>	1gB Hard drive, CDROM

**IXP-010 Amplifier**

The amplifier unit has multi-pole connector to connect to the probe and a multiplexer selects between the 3-channel single-ended inputs. A 16-bit AtoD converter with programmable gain is used along with an on-board micro-controller with non-volatile firmware. Battery life is around 150 hours and data are transferred to the PC via 3m of duplex optical fibre and a self-powered RS232 to optical converter.

**Amplifier Specification**

<b>1</b>	<b>Input</b>	Multipole connector to suit probe in use
<b>2</b>	<b>Channels</b>	Multiple wd 3 channel single ended inputs
<b>3</b>	<b>Amplifier</b>	16 bit A/D Converter with programmable gain
<b>4</b>	<b>Dimensions</b>	120x60x30 mm
<b>5</b>	<b>Weight</b>	170g(with batteries)
<b>6</b>	<b>Optical Link</b>	3 m duplex optical fiber



## INDEXSAR ISOTROPIC SAR PROBES

### E-Field Probe

The near field probe is an implant-able isotropic E-field probe that measures the voltages proportional to  $|E|^2$  or  $|H|^2$  fields. The probes are constructed using three orthogonal dipole sensors arranged on an interlocking, triangular prism core. The probes have built-in shielding against static charges and are contained within a PEEK cylindrical enclosure material at the tip. Probe calibration is described in more detail in the Calibration report appendix.

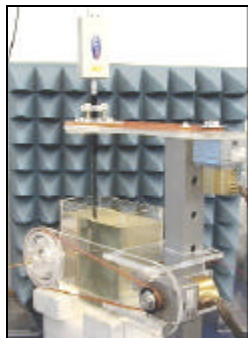
The overall length of probe is 350mm with a Body diameter of 12mm and tip diameter of 5mm.



Probe with Amplifier

### E-FIELD PROBE CALIBRATION

The E-field probe calibration method is based on setting up a calculable specific absorption rate (SAR) in a vertically-mounted WG8 (R22) wave-guide section [1]. The wave-guide has an air-filled, launcher section and a liquid-filled section separated by a matching window that is designed to minimize reflections at the liquid interface. A  $TE_{01}$  mode is launched into the wave-guide by means of a N-type-to-wave-guide adapter. The power delivered to the liquid section is calculated from the forward power and reflection coefficient measured at the input to the wave-guide. For a detailed description of the E-field probe calibration please refer to the calibration report provided.

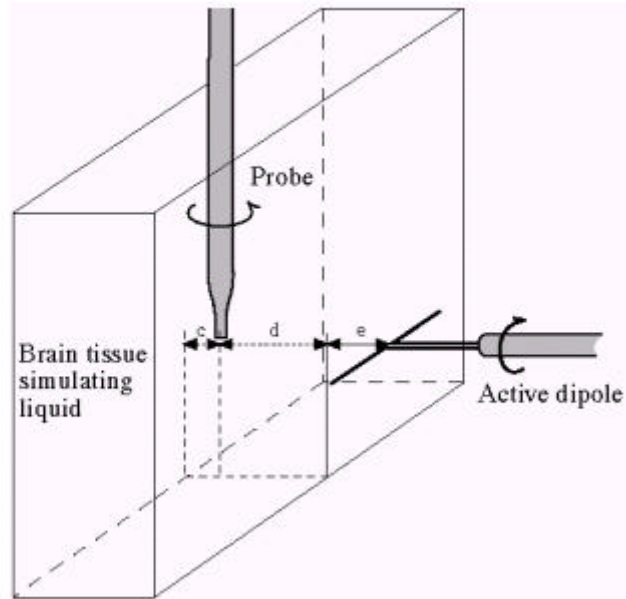


Spherical isotropy jig showing probe

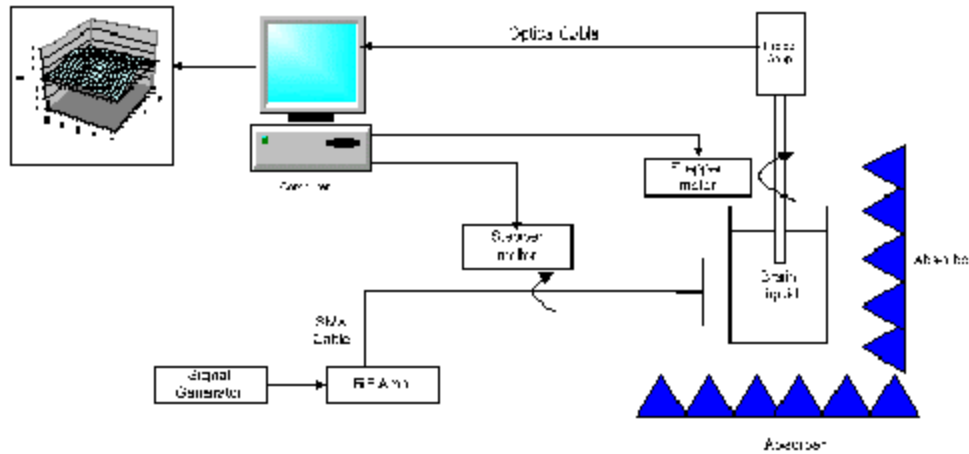
The probe was calibrated at 900, 1800, 1900 and 2450MHz MHz in liquid samples representing both brain liquid and body fluid at these frequencies. The dielectric properties of the brain and body tissue-Simulant liquids employed for calibration are listed in the table below. The measurements were performed prior to each wave-guide test using an Indexsar DiLine measurement kit, which uses the TEM method as recommended in IEEE 1528.

<i>Liquid used</i>	<i>Relative permittivity (measured)</i>	<i>Conductivity (S/m) (measured)</i>
835 MHz BRAIN	43.3	0.911
835 MHz BODY	58.9	0.985
900 MHz BRAIN	42.5	0.97
900 MHz BODY	38.45	1.044
1800 MHz BRAIN	38.97	1.33
1800 MHz BODY	52.53	1.51
1900 MHz BRAIN	38.43	1.429
1900 MHz BODY	52.02	1.62
2000 MHz BRAIN	37.42	1.36
2450 MHz BRAIN	39.29	1.737
2450 MHz BODY	62.9	2.08

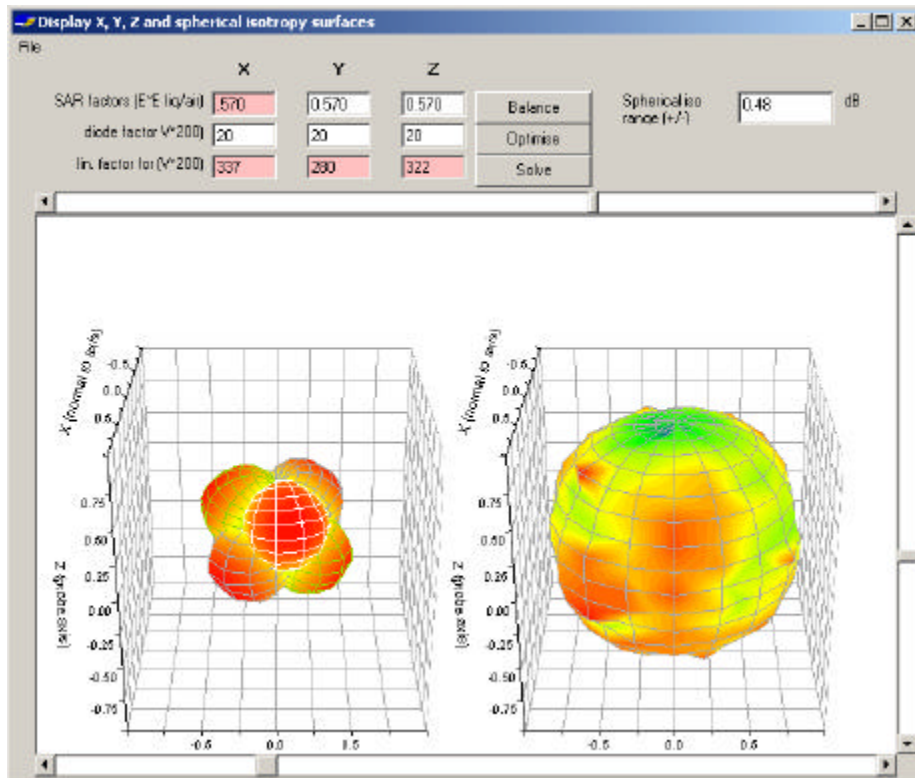
Table indicating the dielectric parameters of the liquids used for calibrations at each frequency



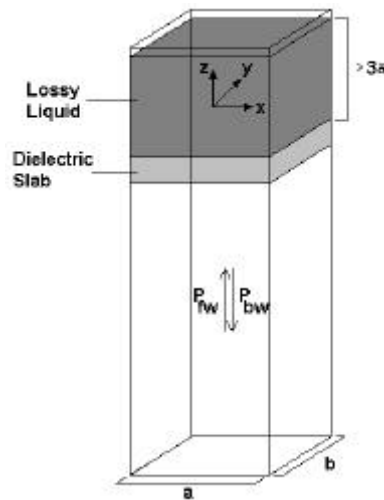
Calibration jig showing probe, dipole and box filled with simulated brain liquid



Schematic diagram of the test geometry used for isotropy



Graphical representation of the probe response to fields applied from each direction. The diagram on the left shows the individual response characteristics of each of the three channels and the diagram on the right shows the resulting probe sensitivity in each direction. The colour range in the figure images the lowest values as blue and the maximum values as red. For the probe S/N 0122, this range is (+/-) 0.48 dB. The probe is more sensitive to fields parallel to the axis and less sensitive to fields normal to the probe axis.



Geometry used for wave-guide calibration (after Ref [2]. Section A.3.2.2)



**PHANTOMS**

SAM Twin Horizontal Phantom per IEEE Draft 1528

The SAM Twin Horizontal is fabricated to the CAD files as specified by FCC OET 65 Supplement C 01-01 and IEEE Draft 1528. It is mounted on a dielectric table which includes mounting brackets for EUT positioners and a shelf for dipole holders. The phantom has three integrated positioning reference points.

SAM Upright Phantom per FCC OET 65 Supplement C 01-01 and IEEE Draft 1528. The SAM Upright Phantom is fabricated to the CAD files as specified by FCC and IEEE. It is mounted on the base table which holds the robotic positioner. The phantom and robot alignment is assured by both mechanical and laser registration systems.

Flat Bath Phantom for testing above 800 MHz

The Flat Bath Box Phantom is fabricated to the specifications of the OET 65 Supplement C and CENELEC EN50361 standard. It is mounted on a similar rotational base to that of which the SAM upright phantom is attached to. It is positioned in place of the SAM upright head when doing validations or flat bath testing.



Phantom Specifications

Phantom Type	Material	Permittivity (g)	Conductivity (F - S/m)
SAM Upright Phantom	Head:polyurethane Resin Base:PVC	<3.15 above 200 MHz	<0.02 below 2 GHz
Box Phantom	Clear: Perspex	<2.85 above 500 MHz	<0.015 below 2 GHz

**Phantom Properties**



Experience has shown that SAR results can vary considerably when plastic or material fixtures used to position the test devices are too close to the antennas (especially for phones with internal antennas). The MapSAR positioner has been designed to have no support material close the top of the phone and is arranged so that the phone pivots around the earpiece position. The positioner gives a range of phone angles from the starting touch position to +15° as required by FCC or EN 50361 or any position within a range of 30°. A graduated scale allows for easy setting. Adjustment is made by means of simple hand screws. For tests requiring phantom hands or hand material, space is made available behind the phone.



## Measurement Procedure

The major components of the test bench are shown in the picture above. A test set and dipole antenna control the handset via an air link and a low-mass phone holder can position the phone at either ear. Graduated scales are provided to set the phone in the 15 degree position. The upright phantom head holds approx. 7 liters of simulant liquid. The phantom is filled and emptied through a 45mm diameter penetration hole in the top of the head.

After an area scan has been performed at a fixed distance of 8mm from the surface of the phantom on the source side, a 3D scan is set up around the location of the maximum spot SAR. First, a point within the scan area is visited by the probe and a SAR reading taken at the start of testing. At the end of testing, the probe is returned to the same point and a second reading is taken. Comparison between these start and end readings enables the power drift during measurement to be assessed.

## SARA2 Interpolation and Extrapolation schemes

SARA2 software contains support for both 2D cubic B-spline interpolation as well as 3D cubic B-spline interpolation. In addition, for extrapolation purposes, a general n-th order polynomial fitting routine is implemented following a singular value decomposition algorithm presented in [4]. A 4th order polynomial fit is used by default for data extrapolation, but a linear-logarithmic fitting function can be selected as an option. The polynomial fitting procedures have been tested by comparing the fitting coefficients generated by the SARA2 procedures with those obtained using the polynomial fit functions of Microsoft Excel when applied to the same test input data.

### Interpolation of 2D area scan

The 2D cubic B-spline interpolation is used after the initial area scan at fixed distance from the phantom shell wall. The initial scan data are collected with approx. 10mm spatial resolution and spline interpolation is used to find the location of the local maximum to within a 1mm resolution for positioning the subsequent 3D scanning.

### Extrapolation of 3D scan

For the 3D scan, data are collected on a spatially regular 3D grid having (by default) 6.4 mm steps in the lateral dimensions and 3.5 mm steps in the depth direction (away from the source). SARA2 enables full control over the selection of alternative step sizes in all directions.

The digitized shape of the head is available to the SARA2 software, which decides which points in the 3D array are sufficiently well within the shell wall to be 'visited' by the SAR probe. After the data collection, the data are extrapolated in the depth direction to assign values to points in the 3D array closer to the shell wall. A notional extrapolation value is also assigned to the first point outside the shell wall so that subsequent interpolation schemes will be applicable right up to the shell wall boundary.

### Interpolation of 3D scan and volume averaging

The procedure used for defining the shape of the volumes used for SAR averaging in the SARA2 software follow the method of adapting the surface of the 'cube' to conform with the curved inner surface of the phantom. This is called, here, the conformal scheme.

For each row of data in the depth direction, the data are extrapolated and interpolated to less than 1mm spacing and average values are calculated from the phantom surface for the row of data over distances corresponding to the requisite depth for 1g and 1g cubes. This results in two 2D arrays of data, which are then cubic B-spline interpolated to sub mm lateral resolution. A search routine then moves an averaging square around through the 2D array and records the maximum value of the Corresponding 1g and 1g volume averages. For the definition of the surface in this procedure, the digitized position of the



head shell surface is used for measurement in head-shaped phantoms. For measurements in rectangular, box phantoms, the distance between the phantom wall and the closest set of gridded data points is entered into the software.

For measurements in box-shaped phantoms, this distance is under the control of the user. The effective distance must be greater than 2.5mm as this is the tip-sensor distance and to avoid interface proximity effects, it should be at least 5mm. A value of 6 or 8mm is recommended. This distance is called *dbe* in EN 50361.

For automated measurements inside the head, the distance cannot be less than 2.5mm, which is the radius of the probe tip and to avoid interface proximity effects, a minimum clearance distance of  $x$  mm is retained. The actual value of *dbe* will vary from point to point depending upon how the spatially-regular 3D grid points fit within the shell. The greatest separation is when a grid point is just not visited due to the probe tip dimensions. In this case the distance could be as large as the step-size plus the minimum clearance distance (i.e with  $x=5$  and a step size of 3.5, *dbe* will be between 3.5 and 8.5mm).

The default step size (*dstep* in EN 50361) used is 3.5mm, but this is under user-control. The compromise is with time of scan, so it is not practical to make it much smaller or scan times become long and power-drop influences become larger. The robot positioning system specification for the repeatability of the positioning (*dss* in EN50361) is  $\pm 0.04$ mm.

The phantom shell is made by an industrial molding process from the CAD files of the SAM shape, with both internal and external moulds. For the upright phantoms, the external shape is subsequently digitised on a Mitutoyo CMM machine (Euro C574) to a precision of 0.001mm. Wall thickness measurements made non-destructively with an ultrasonic sensor indicate that the shell thickness (*dph*) away from the ear is 2.0  $\pm$  0.1mm. The ultrasonic measurements were calibrated using additional mechanical measurements on available cut surfaces of the phantom shells. See support document IXS-020x.

For the upright phantom, the alignment is based upon registration of the rotation axis of the phantom on its 253mm diameter baseplate bearing and the position of the probe axis when commanded to go to the axial position. A laser alignment tool is provided (procedure detailed elsewhere). This enables the registration of the phantom tip (*dmis*) to be assured to within approx. 0.2mm. This alignment is done with reference to the actual probe tip after installation and probe alignment. The rotational positioning of the phantom is variable – offering advantages for special studies, but locating pins ensure accurate repositioning at the principal positions (LH and RH ears).

## Uncertainty Assessment

Uncertainty Component	Sec.	Tol. (+/-)		Prob. Dist.	Divisor (descrip)		Divisor (value)	c1	Standard Uncertainty (%)	
		(dB)	(%)							
sqr										
<b>Measurement System</b>										
Probe Calibration	E1.1			10	N	1 or k	2	1	5.00	25.00
Axial Isotropy	E1.2	0.25	5.93	5.93	R	v3	1.73	0	0.00	0.00
Hemispherical Isotropy	E1.2	0.5	12.2	12.20	R	v3	1.73	1	7.04	49.63
Boundary effects	E1.3		4	4.00	R	v3	1.73	1	2.31	5.33
Linearity	E1.4	0.04	0.93	0.93	R	v3	1.73	1	0.53	0.29
System Detection Limits	E1.5		1	1.00	R	v3	1.73	1	0.58	0.33
Readout Electronics	E1.6		1	1.00	N	1 or k	1.00	1	1	1.00
Response time	E1.7		0	0.00	R	v3	1.73	1	0	0.00
Integration time	E1.8		1.8	1.80	R	v3	1.73	1	1.04	1.08
RF Ambient Conditions	E5.1		3	3.00	R	v3	1.73	1	1.73	3
Probe Positioner Mechanical Tolerance	E5.2		0.6	0.60	R	v3	1.73	1	0.35	0.12
Probe Position wrt. Phantom Shell	E5.3		5	3.80	R	v3	1.73	1	2.19	4.81
SAR Evaluation Algorithms	E4.2		8	4.00	R	v3	1.73	1	2.31	5.33
<b>Test Sample Related</b>										
Test Sample Positioning	E3.2.1		10	10.00	R	v3	1.73	1	5.77	33.33
Device Holder Uncertainty	E3.1.1		10	8.00	R	v3	1.73	1	4.62	21.33
Output Power Variation	E5.6.2		5	5.00	R	v3	1.73	1	2.89	8.33
<b>Phantom and Tissue Parameters</b>										
Phantom Uncertainty (shape and thickness)	E2.1		4	4.00	R	v3	1.73	0.5	1.15	1.33
Liquid conductivity (Deviation from target)	E2.2		5	5.00	R	v3	1.73	0.5	1.44	2.08
Liquid conductivity (measurement uncert.)	E2.2		10	10.00	R	v3	1.73	0.5	2.89	8.33
Liquid permittivity (Deviation from target)	E2.2		5	5	R	v3	1.73	0.5	1.44	2.08
Liquid permittivity (measurement uncert.)	E2.2		5	5.00	R	v3	1.73	0.5	1.44	2.08
<b>Combined standard uncertainty</b>					<b>RSS</b>			13.2		
<b>Expanded uncertainty k=2(95% Confidence Level)</b>					<b>25.9%</b>					

**Table 8. Uncertainty budget of SARA2**

Table 8 includes the preliminary uncertainty budget. The expanded uncertainty is assessed to be 25.9%. This uncertainty includes probe calibration, positioning and evaluation errors, as well as errors of the correct dielectric parameters for the tissue simulating liquid, etc.

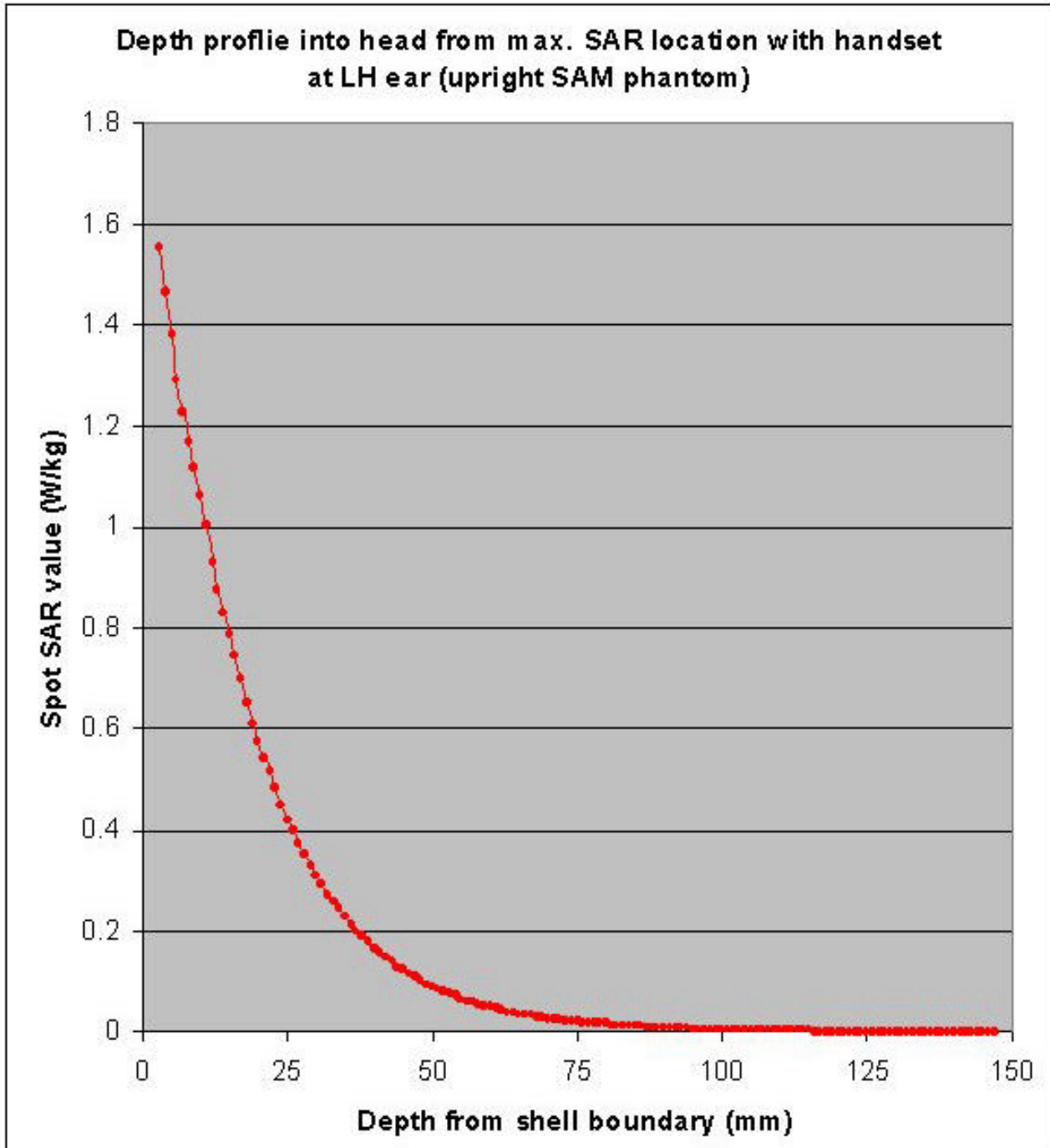


---

## Appendix

---

## Z-SCAN PLOTS





## FCC Exposure Criteria

In the USA the recent FCC exposure criteria [FCC 2001] are based upon the IEEE Standard C95.3 [IEEE 2002]. The IEEE standard C95.3 2002 sets limits for human exposure to radio frequency electromagnetic fields in the frequency range 3 kHz to 300 GHz.

### 2.1 Distinction Between Exposed Population, Duration of Exposure and Frequencies

The American Standard [IEEE 2002] distinguishes between controlled and uncontrolled environment. Controlled environments are locations where there is exposure that may be incurred by persons who are aware of the potential for exposure as a concomitant of employment or by other cognizant persons. Uncontrolled environments are locations where there is the exposure of individuals who have no knowledge or control of their exposure. The exposures may occur in living quarters or workplaces. For exposure in controlled environments higher field strengths are admissible. In addition the duration of exposure is considered.

Due to the influence of frequency on important parameters, as the penetration depth of the electromagnetic fields into the human body and the absorption capability of different tissues, the limits in general vary with frequency.

### 2.2 Distinction between Maximum Permissible

The biological relevant parameter describing the effects of electromagnetic fields in the frequency range of interest is the specific absorption rate SAR (dimension: power/mass). It is a measure of the power absorbed per unit mass. The SAR may be spatially averaged over the total mass of an exposed body or its parts. The SAR is calculated from the r.m.s. electric field strength E inside the human body, the conductivity s and the mass density r of the biological tissue:

$$SAR = \sigma \frac{E^2}{\rho}$$

The specific absorption rate describes the initial rate of temperature rise as a function of the specific heat capacity c of the tissue. A limitation of the specific absorption rate prevents an excessive heating of the human body by electromagnetic energy.

As it is sometimes difficult to determine the SAR directly by measurement (e.g. whole body averaged SAR), the standard specifies more readily measurable maximum permissible exposures in terms of external electric E and magnetic field strength H and power density S, derived from the SAR limits. The limits for E, H and S have been fixed so that even under worst case conditions, the limits for the specific absorption rate SAR are not exceeded. For the relevant frequency range the maximum permissible exposure may be exceeded if the exposure can be shown by appropriate techniques to produce SAR values below the corresponding limits.

### 2.3 SAR Limit

In this report the comparison between the American exposure limits and the measured data is made using the spatial peak SAR; the power level of the device under test guarantees that the whole body averaged SAR is not exceeded. Having in mind a worst case consideration, the SAR limit is valid for uncontrolled environment and mobile respectively portable transmitters. According to Table 1 the SAR values have to be averaged over a mass of 1 g (SAR1g) with the shape of a cube.

Standard	Status	SAR limit [W/kg]
OET 65 Supplement C Edition 01-01	In Force	1.6

**SAR Limit**



### The FCC Measurement Procedure

The Federal Communications Commission (FCC) has published a report and order on the 1 st of August 1996 [FCC 1996], which requires routine dosimetric assessment of mobile telecom-communications devices, either by laboratory measurement techniques or by computational modeling, prior to equipment authorization or use. In 2001 the Commission's Office of Engineering and Technology has released Edition 01-01 of Supplement C to OET Bulletin 65.

This revised edition, which replaces Edition 97-01, provides additional guidance and information for evaluating compliance of mobile and portable devices with FCC limits for human exposure to radio frequency emissions [FCC 2001].

### General Requirements

The test shall be performed in a laboratory with an environment which avoids influence on SAR measurements by ambient EM sources and any reflection from the environment itself. The ambient temperature shall be in the range of 20°C to 26°C and 30-70% humidity.

### Device Operating Next to a Person's Ear

#### 3.2.1 Phantom Requirements

The phantom is a simplified representation of the human anatomy and comprised of material with electrical properties similar to the corresponding tissues. The physical characteristics of the phantom model shall resemble the head and the neck of a user since the shape is a dominant parameter for exposure.

### Test Positions

As it cannot be expected that the user will hold the mobile phone exactly in one well defined position, different operational conditions shall be tested. The Supplement C to OET Bulletin 65 requires two test positions. For an exact description helpful geometrical definitions are introduced and shown in Fig. 2 - 3.

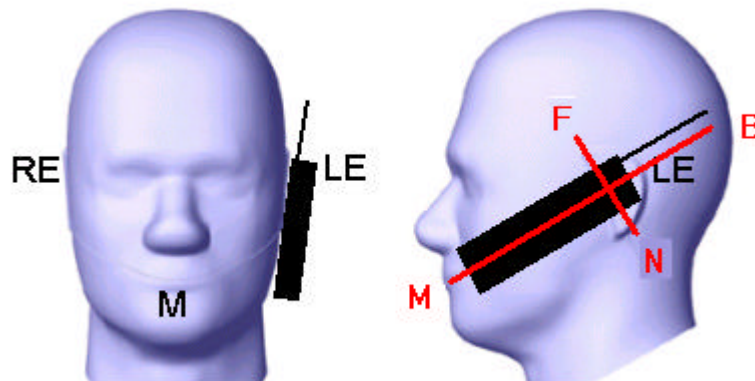
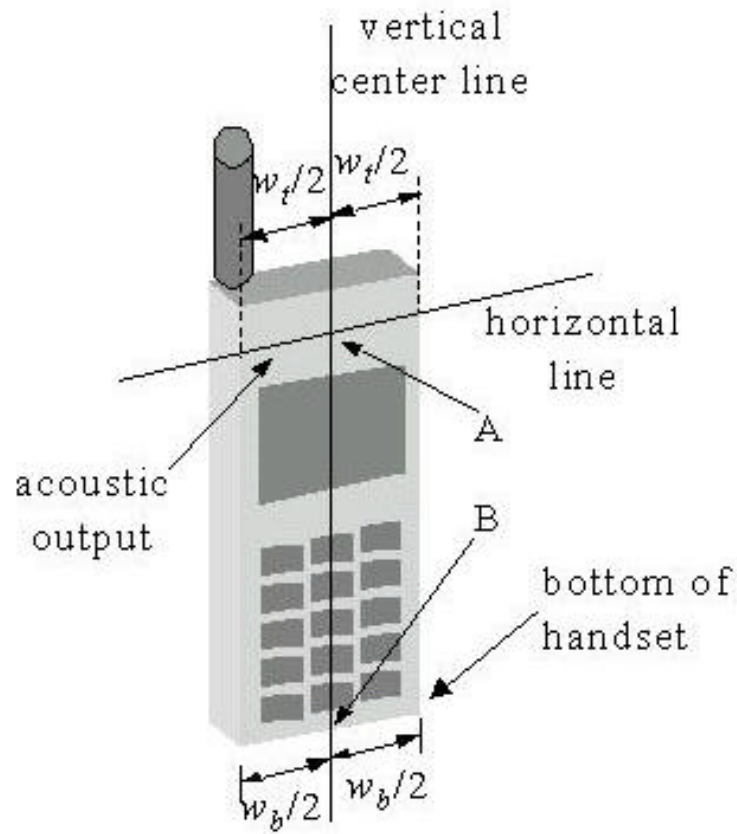
There are two imaginary lines on the mobile, the vertical centerline and the horizontal line. The vertical centerline passes through two points on the front side of the handset: the midpoint of the width  $w_t$  of the handset at the level of the acoustic output (point A on Fig. 2), and the midpoint of the width  $w_b$  of the bottom of the handset (point B). The horizontal line is perpendicular to the vertical centerline and passes through the center of the acoustic output (see Fig. 2). The two lines intersect at point A.

According to Fig. 3 the human head position is given by means of the following three reference points: auditory canal opening of both ears (RE and LE) and the center of the closed mouth (M). The ear reference points are 15-17 mm above the entrance to the ear canal along the BM line (back-mouth), as shown in Fig. 3. The plane passing through the two ear canals and M is defined as the reference plane. The line NF (Neck-Front) perpendicular to the reference plane and passing through the RE (or LE) is called the reference pivoting line. Line BM is perpendicular to the NF line. With this definitions the test positions are given by;

#### Check position (see Fig. 4):

Position the handset close to the surface of the phantom such that point A is on the (virtual) extension of the line passing through points RE and LE on the phantom (see Fig. 3), such that the plane defined by the vertical center line and the horizontal line of the phone is approximately parallel to the sagittal plane of the phantom. Translate the handset towards the phantom along the line passing through RE and LE until the handset touches the ear. While maintaining the handset in this plane, rotate it around the LE-RE line until the vertical centerline is in the plane normal to MB-NF including the line MB (called the reference plane). Rotate the phone around the vertical centerline until the phone (horizontal line) is symmetrical with respect to the line NF. While maintaining the vertical centerline in the reference plane, keeping point A on the line passing through RE and LE, and maintaining the phone contact with the ear, rotate the handset about the line NF until any point on the handset is in contact with a phantom point below the ear. While maintaining the orientation of the phone retract the phone parallel to the reference plane far enough to enable a rotation of the phone by 15°. Rotate the phone around the horizontal line by 15°. While maintaining the orientation of the phone, move the phone parallel to the reference plane until any part of the phone touches the head. In this position, point A will be located on the line RE-LE.





Phantom reference points.

### **Test to be Performed**

The SAR test shall be performed with both phone positions described above, on the left and right side of the phantom. The device shall be measured for all modes operating when the device is next to the ear, even if the different modes operate in the same frequency band.

For devices with retractable antenna the SAR test shall be performed with the antenna fully extended and fully retracted. Other factors that may affect the exposure shall also be tested. For example, optional antennas or optional battery packs which may significantly change the volume, lengths, flip open/closed, etc. of the device, or any other accessories which might have the potential to considerably increase the peak spatial-average SAR value. The SAR test shall be performed at the high, middle and low frequency channels of each operating mode. If the SAR measured at the middle channel for each test configuration is at least 2.0 dB lower than the SAR limit, testing at the high and low channels is optional.

### **Body-worn and Other Configurations**

#### **Phantom Requirements**

For body-worn and other configurations a flat phantom shall be used which is comprised of material with electrical properties similar to the corresponding tissues.

#### **Test Position**

The body-worn configurations shall be tested with the supplied accessories (belt-clips, holsters, etc.) attached to the device in normal use configuration. Devices with a headset output shall be tested with a connected headset.

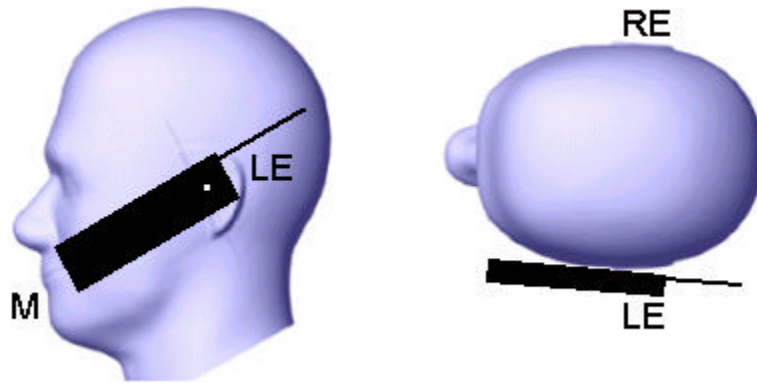
### **Test to be Performed**

For purpose of determining test requirements, accessories may be divided into two categories: those that do not contain metallic components and those that do. For multiple accessories that do not contain metallic components, the device may be tested only with that accessory which provides the closest spacing to the body.

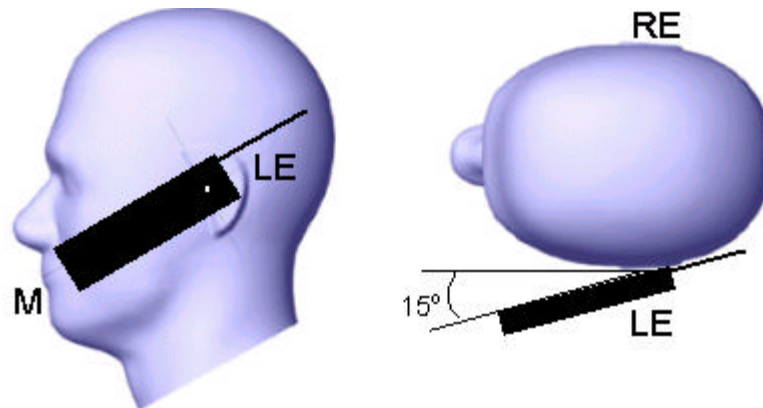
For multiple accessories that contain metallic components, the device must be tested with each accessory that contains a unique metallic component. If multiple accessories share an identical metallic component, only the accessory that provides the closest spacing to the body must be tested.

If the manufacturer provides none body-worn accessories a separation distance of 1.5 cm between the back of the device and the flat phantom is recommended. Other separation distances may be used, but they shall not exceed 2.5 cm. In these cases, the device may use body-worn accessories that provide a separation distance greater than that tested for the device provided however that the accessory contains no metallic components.

For devices with retractable antenna the SAR test shall be performed with the antenna fully extended and fully retracted. Other factors that may affect the exposure shall also be tested. For example, optional antennas or optional battery packs which may significantly change the volume, lengths, flip open/closed, etc. of the device, or any other accessories which might have the potential to considerably increase the peak spatial-average SAR value. The SAR test shall be performed at the high, middle and low frequency channels of each operating mode. If the SAR measured at the middle channel for each test configuration is at least 2.0 dB lower than the SAR limit, testing at the high and low channels is optional.



The cheek position.



The tilted position

## List of Terms and Abbreviations

AC	Alternating Current
ANSI	American National Standards Institute
Cal	Calibration
d	Measurement Distance
dB	Decibels
dBFA	Decibels above one microamp
dBV	Decibels above one microvolt
dBFA/m	Decibels above one microamp per meter
dBV/m	Decibels above one microvolt per meter
DC	Direct Current
E	Electric Field
EUT	Equipment Under Test
f	Frequency
FCC	Federal Communications Commission
CISPR	Comite International Special des Perturbations Radioelectriques (International Special Committee on Radio Interference)
GRP	Ground Reference Plane
H	Magnetic Field
Hz	Hertz
IEC	International Electrotechnical Commission
IEEE	Institute for Electrical and Electronic Engineers
kHz	kilohertz
kPa	kilopascal
kV	kilovolt
LISN	Line Impedance Stabilization Network
MHz	Megahertz
MPE	Maximum Permissible Exposure
FH	microhenry
FF	microfarad
Fs	microseconds
PRF	Pulse Repetition Frequency
RF	Radio Frequency
RMS	Root-Mean-Square
SAR	Specific Absorption Rate
TWT	Traveling Wave Tube
V/m	Volts per meter



---

**END of Report**

---