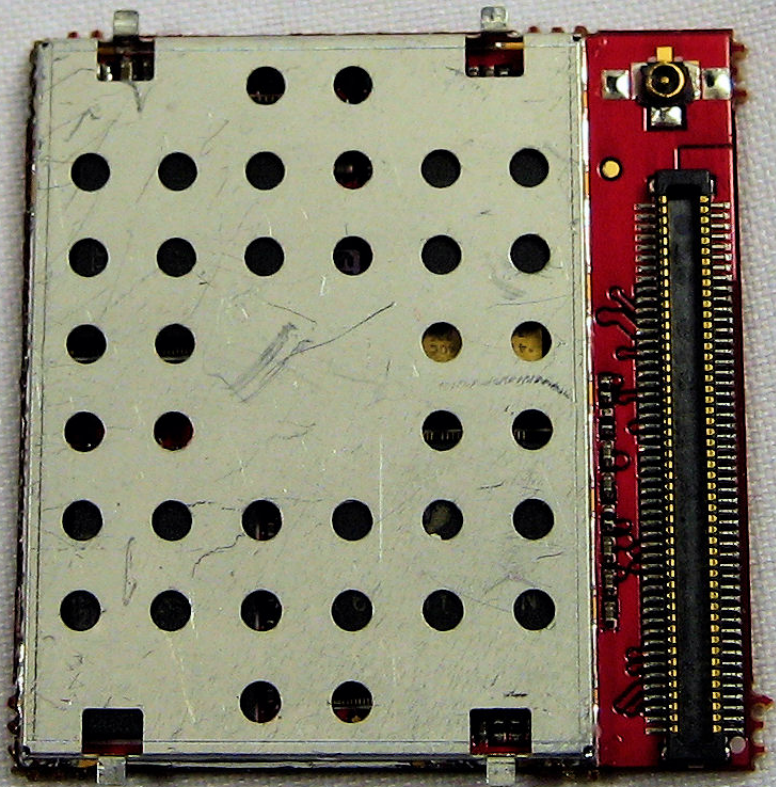
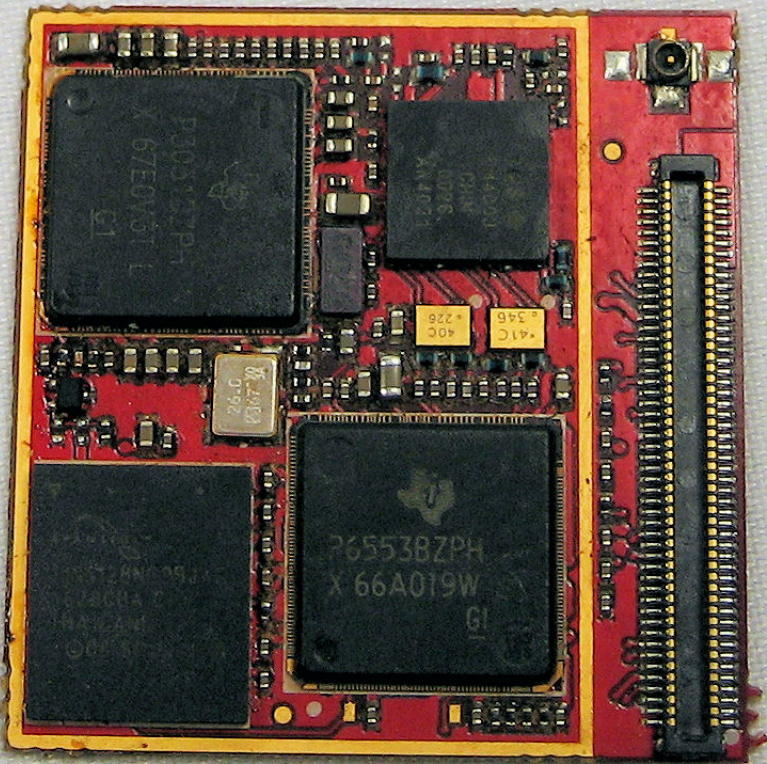


ld





P3032ZPA  
X 67E0V3TE  
GI

H4001  
M28C  
X 41FC2

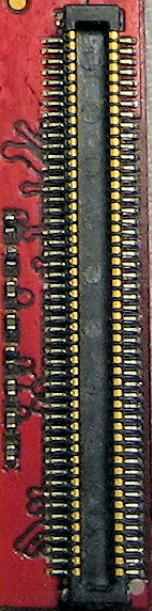
82.7V03  
0.92

40C  
+ 228

41C  
+ 348

26553BZPH  
X 66A019W  
GI

150  
M28C  
X 41FC2



GSM0119MG70 .ASY

25

enfora®

Enabler™

TTM-SA2



RoHS

94V-0 4206

CE 0889

e Side

