



佳和集團

怡安科技

CHIA HEIR GROUP

RF-LINK SYSTEMS INC.

FCC ID.: MIBRF50201

EXHIBIT 4

User Manual

Wireless 3D Mouse

User's Manual



Table of contents

PACKAGE CONTENTS.....	II
INTRODUCTION	1
GETTING TO KNOW YOUR WIRELESS 3D MOUSE	2
RECEIVER	2
MOUSE.....	2
INSTALLING YOUR WIRELESS 3D MOUSE.....	3
HARDWARE INSTALLATION	3
SOFTWARE INSTALLATION.....	3
USING THE WIRELESS 3D MOUSE	4
FREEDOM OF MOVEMENT WITHOUT CABLE	4
POWER SAVING OPERATION	4
MOUSE CONTROL PANEL	4
SIMULTANEOUS MULTI-USER OPERATION IN THE SAME OFFICE OR ROOM	7
TROUBLESHOOTING	9
SYSTEM SPECIFICATIONS	10



TX: FCC ID: MIBRF50201
RX: FCC ID: MIBRF50202

INSTRUCTION MANUAL CLASS B COMPUTING DEVICES

Use the provided shielded power supply cable so as not to interfere with radio and television reception. Also a shielded interface data cable must be used for video output port, parallel output port and serial output port to avoid causing Radio-TV interference Problems.

If you use other cables, it may cause interference with radio and television reception.

This equipment has been tested and found to comply with the limits for a Class B digital device, pursuant to Part 15 of the FCC Rules. These limits are designed to provide reasonable protection against harmful interference in a residential installation. This equipment generates, uses and can radiate radio frequency energy and, if not installed and used in accordance with the instruction, may cause harmful interference to radio communications. However, there is no guarantee that interference will not occur in a particular installation. If this equipment does cause harmful interference to radio or television reception, which can be determined by turning the equipment off and on, the user is encouraged to try to correct the interference by one or more of the following measures:

- Reorient or relocate the receiving antenna.
- Increase the separation between the equipment and receiver.
- Connect the equipment into an outlet on a circuit different from that to which the receiver is connected.
- Consult the dealer or an experienced radio/TV technician for help.

CAUTION: Any changes or modifications not expressly approved by the grantee of this device could void the user's authority to operate the equipment.

Package contents

The Wireless 3D Mouse package should contain:

- One 3D Mouse (Transmitter Unit)
- One Receiver Unit
- One stand for the receiver
- One Wireless 3D Mouse Software Setup Disk
- This User's Manual

Introduction

Thank you for purchasing the RF-Link's Wireless 3D Mouse. The Wireless 3D Mouse uses the latest in wireless radio technology for convenient cordless mouse operation on any standard personal computer in the office or at home.

Through radio wireless technology, the Wireless 3D Mouse can be used from any direction or angle at a distance of up to three meters, making surfing the Internet easier than ever. The special "Wheel" feature allows for rapid and easy scrolling when working with long documents.

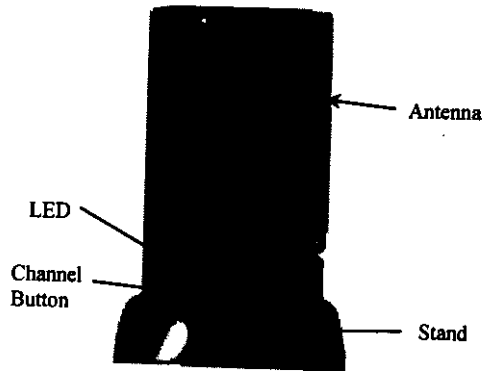
A Mouse Control Panel adds flexibility by providing a series of easy-to-use functions. The Wireless 3D Mouse comes with an automatic 5-minute shut-off to maximize battery life.

Through the use of radio multi-channel technology as many as eight users may use a Wireless 3D Mouse at the same time, and in the same room or office!

For more information on installing and using the Wireless 3D Mouse, carefully read the installation and use instructions.

Getting to know your Wireless 3D Mouse

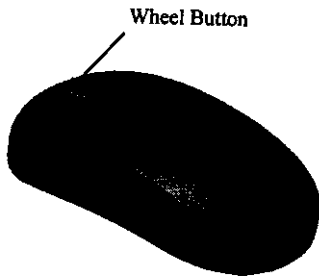
Receiver



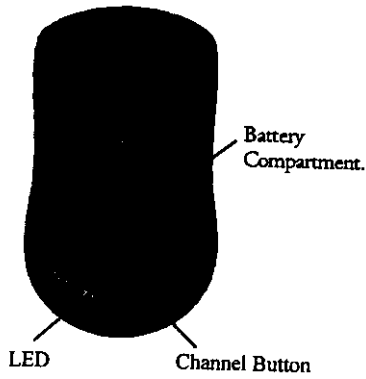
Front View

FCC ID: MIBRF50202

Mouse



Side View



Bottom View

FCC ID: MIBRF50201

Installing Your Wireless 3D Mouse

Hardware Installation

Installing batteries in the mouse (transmitter unit)

1. Remove the battery cover on the bottom of the Wireless 3D Mouse
2. Insert two AAA batteries into the battery compartment
3. Carefully replace the cover

Connecting the receiver unit to a PS/2 port

1. Turn off the computer before inserting the connector to the PS/2 port
Caution: Connecting and disconnecting cables while the computer is running may damage the mouse port and/or the computer.
2. Locate the PS/2 port on the back of the computer (see Figure 1)



Figure 1

3. Insert the connector into the mouse port

Software Installation

The mouse will be functional after hardware installation. However, to use the advanced Wireless 3D Mouse wheel and button, you must install the supplied software. **Note:** that your software applications must support the wheel and wheel button.

To install your mouse software follow these steps

1. Turn on the computer and start Windows
2. Insert the mouse software setup disk into disk drive A or B
3. On computers running Windows 95, Windows 98, or Windows NT, click the Start button and the Run command
-Or-
On computers running Windows 3.1x, open Program Manager and choose the Run command from the File menu
4. If the setup disk is in drive A, enter a:setup
5. Follow the installation instructions and restart Windows after installation is completed

Using the Wireless 3D Mouse

Freedom of movement without cable

The reliable Radio Frequency (RF) technology of the Wireless 3D Mouse allows you to move the mouse freely. You can use the Wireless 3D Mouse up to three meters away from the receiver unit, enjoying full wireless convenience from any direction or angle.

Power saving operation

To save battery life, the Wireless 3D Mouse will automatically shut off if the mouse is not moved or pressed within 5 minutes. **Note: The buttons or wheel button of Wireless 3D Mouse must be pressed before reactivating the mouse from the sleep mode.**

Mouse Control Panel

The Wireless 3D Mouse comes with a control panel to define buttons and scroll functions. To find the Mouse Control Panel follow these steps:

- On computers running Windows 95, Windows 98 or Windows NT, click Start/Settings/Control Panel. Double-click on the Mouse icon
-Or-
On computers running Windows 3.1x, open Program Manager and choose Wireless 3D Mouse from Control Panel.

Mouse Buttons

- The Left mouse button is for standard click and drag action
- The Right mouse button is for Context menu and Alternate selection

Mouse Wheel

You can use the Wireless 3D Mouse wheel in two ways:

1. Rotate it forward and back (used for scrolling through active applications)
2. Press it like a button (used as a third button)

Please choose "Wheel" from Control Panel

- Enabling Generic Scrolling Wizard in order to use the Scrolling Axis, Initial speed setting (Figure 2), Quick Scroll and Auto scroll

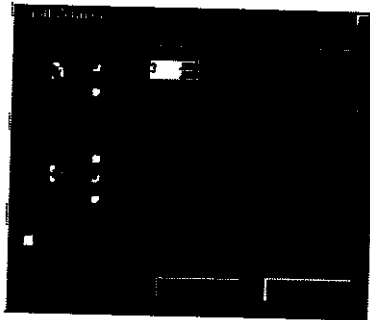
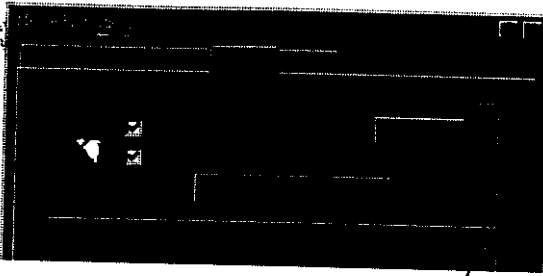


Figure 2

Auto Scroll

Auto scroll enables you to sit back while your document/Web page etc. auto scrolls at the speed you like.

To use the auto scroll function the "Quick Scroll, Auto Scroll Control" check box must be checked (Figure 3). Click anywhere in the document with the wheel button. Move the mouse up, down, or sideways to begin auto scrolling. The distance you move the mouse from the initial click point will determine the scrolling speed. The auto scroll initial speed settings can be further adjusted from the Auto Scroll box (Figure 4).

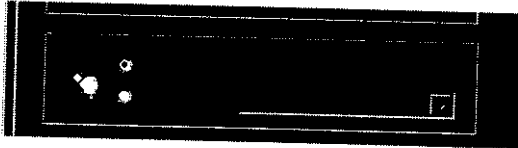


Figure 3



Figure 4

Quick Scroll

Quick Scroll allows fast scrolling through your document. Setting the scrolling Axis to Initial permits fast Scrolling in one axis only. Place the mouse pointer in the document and click the wheel once. Hold down the wheel and move either up, down, or sideways. If you move up or down then you need to release the wheel and click it again before you can move sideways.

Predominant provides four-way scrolling without releasing the wheel (Figure 6).

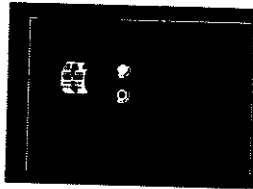


Figure 5

- Enabling Microsoft IntelliMouse support provides extra functions for use with MS Office 97 compliant programs. To make the Wireless 3D Mouse compatible with Microsoft IntelliMouse standards, you must enable IntelliMouse Support (Figure 6). Once Intellimouse Support is enabled, you may Zoom into documents by holding the <Ctrl> key down and using the wheel button (for Office 97 compliant programs only)

Note: Some wheel features may change slightly when used within Office 97 application.

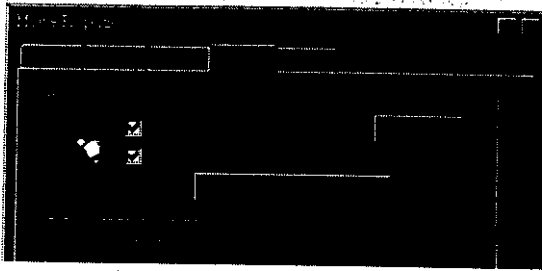


Figure 6

- The Middle mouse "Click" function can be assigned from the drop-down list next to the Button Action check box. (See Figure 7)

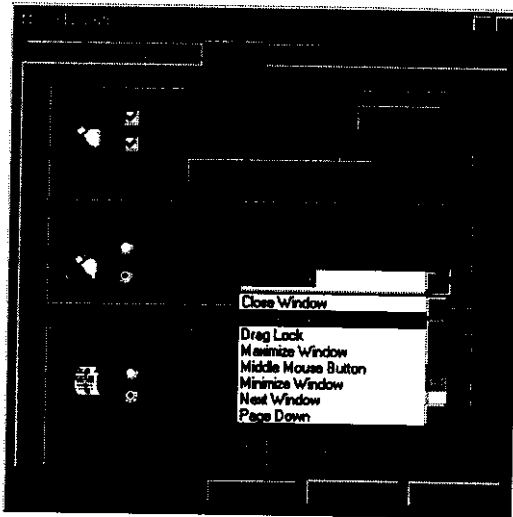


Figure 7

Simultaneous multi-user operation in the same office or room

Through the use of multi-channel radio technology, as many as eight users may use a Wireless 3D Mouse at the same time and in the same room or office.

- Pressing the Channel button on the receiver unit or the bottom of mouse will change the radio channel. If the Channel button is pressed, the LED on the receiver or the bottom of the mouse will flash to indicate the channel number (Figure 8). I.e. 3 flashes equals channel 3. Pressing the button for longer than one second will reset the unit to channel 1. When the Wireless 3D Mouse is subject to interference from another user's mouse or undetermined electrical devices such as monitors, computers, or peripheral devices, it is necessary to change channels on the mouse unit and the receiver unit

Note: The receiver and mouse should always be set to the same channel

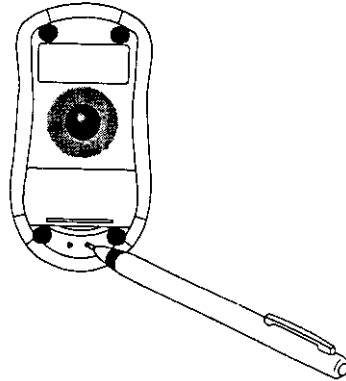


Figure 8

Channel 1: One flash	Channel 5: Five flashes
Channel 2: Two flashes	Channel 6: Six flashes
Channel 3: Three flashes	Channel 7: Seven flashes
Channel 4: Four flashes	Channel 8: Eight flashes

Troubleshooting

If the Wireless 3D Mouse does not work after installing hardware and software

Try the following:

- Check that the connector of the receiver unit is inserted securely into the PS/2 port
- Make sure the two AAA batteries have been inserted correctly
- Make sure the Wireless 3D Mouse is used within three meters of the receiver unit. In some cases, the electromagnetic emissions from your computer may affect the wireless operation. Move the receiver away from the computer or monitor or try another channel.
- Make sure the wireless mouse is in communication with the receiver unit. When the mouse is being moved, the green LED will light on the receiver unit



System Specifications

Radio Frequency	900MHz
Channel Number	8
Operation Range	3 meters
Radio Data Rate	9600bps
Resolution	400 PI
Interface	PS/2 mouse port
Battery Life	6 Months