

# User Manual

## Vista – Bluetooth on Flexi-tape

### INSTALLATION

#### Mounting:

Choosing the mounting location: When choosing mounting location keep the following in mind. Plan which end of the mounting location the power wires will best route from. The first 95 mm of the strip (at the power wire end) contains the controller portion on a rigid board. No light will emit from this section and this section cannot be bent. The remainder of the strip can be bent forward or backwards, but must not be bent tighter than its minimum bend radius of 19 mm. The strip can not be kinked. The strip can not be bent across its width. The Flexi-tape can be cut to length in increments of 100 mm but must be cut at the indicated cut marks. Cutting can be done by metal cutting shears. Once cut an insulative end cap (Part number 797021) must be added to the cut end to prevent possible shorts that could damage the Flexi -tape. Only cut the Flexi-tape when it is completely disconnected from its power source.

The Flexi-tape can be mounted using clips, or channel rail systems with adhesive backing. It should not be mounted with staples or be mounted by screws or nails that proceed through the Flexi-tape. For clip mounting use part 580104B. Mount the clip first using 271600 screws or 050049 Acrylic HB tape backing. Then press the Flexi-tape into the clip. For channel mounting use part 520005. Cut the channel to length and insert the Flexi-tape into the channel. Mount the channel using 050049 Acrylic HB tape backing. Then place 585003 end caps on both ends and mount using flat head screw 271600.

#### Wiring:

The Bluetooth on Flexi-tape is powered from a 12-volt DC source. For automotive and marine applications, it can be connected to a 12-volt circuit that is protected by a 5-amp fuse. For building applications, a 12-volt power supply must be used. See power supply instructions for its mounting and connection to the building mains. The red wire connects the supply positive and the black wire connects to the supply negative (or ground) terminal.

### USING THE APP

The Vista Bluetooth App is available for both the Android operating system and iOS. Use the instructions below that refer to the operating system of your device.

Android (Version 6 or later)



Installing: The Android version of the Vista Bluetooth App is available for free download from Google Play. 30 mB of available ROM memory is required. Search for “[Vista Bluetooth App](#)” in the Google Play Application and click the “Install” button to start the download and installation.

Connecting: Do not initialize the Bluetooth pairing to a Vista Bluetooth light through the Bluetooth settings of the Android device. An extra layer of security requires that

# User Manual

## Vista – Bluetooth on Flexi-tape

the pairing be established through the Vista Bluetooth App. Follow the pairing procedure below to pair with a new light.

iOS (Version 10 or later)

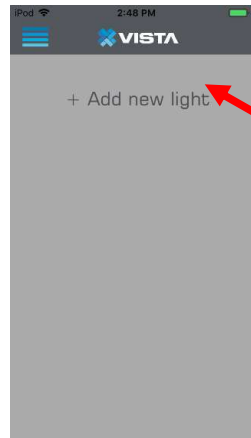


**Installing:** The iOS version of the Vista Bluetooth App is available for free download from the Apple App Store. 30 mB of available ROM memory is required. Search for “[Vista Bluetooth App](#)” in the Apple App Store and click the “Get” button to start the download and installation.

**Connecting:** Do not initialize the Bluetooth pairing to a Vista Bluetooth light through the Bluetooth settings of the iOS device. An extra layer of security requires that the pairing be established through the Vista Bluetooth App. Follow the pairing procedure below to pair with a new light.

Pairing procedure:

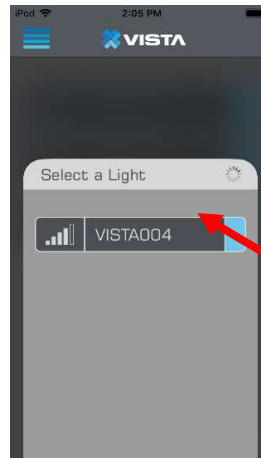
1. To connect to a new light from the Vista Bluetooth App, open the app and select “+ Add new light” on the main screen of the app. See screen shot 1.



**Tap on “+ Add new light”**

Screen shot 1: “Lights” screen

2. Once the “Select a Light” pop up menu appears, select the light you wish to connect to in the list of lights available. See screen shot 2.



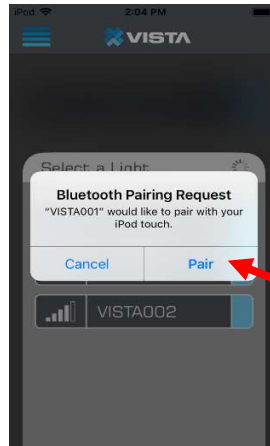
**Tap on a light to connect to it.**

Screen Shot 2: Select a light

# User Manual

## Vista – Bluetooth on Flexi-tape

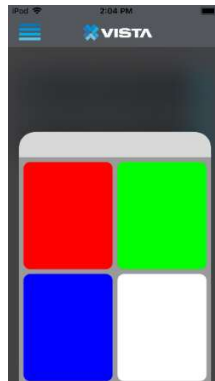
3. After selecting a light to connect to, the “Bluetooth Pairing Request” prompt will appear. Select whether you wish to “Cancel” the pair request or “Pair” to continue. See screen shot 3.



**Tap on “Pair” to accept the connection request or “Cancel” to cancel the pair request.**

Screen Shot 3: Accept the pair request

4. After accepting the pair request, the light you are pairing to will change to a random color (Red, Green, Blue, or White), and the color tile menu will appear in the app. Select the color tile that matches the color of the light. See screen shot 4.

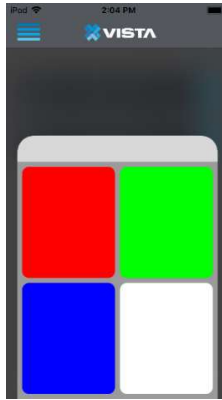


Screen Shot 4: Color match Pairing, First Color

5. After selecting the correct color in the above step, the color of the light will change to a second random color. Again, select the color tile that matches the color of the light. See screen shot 5.

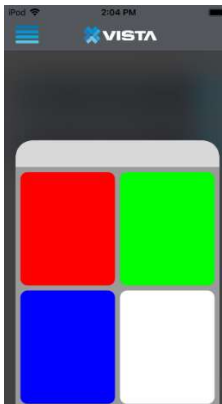
# User Manual

## Vista – Bluetooth on Flexi-tape



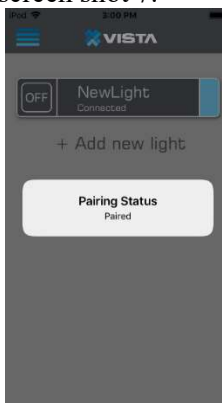
Screen Shot 5: Color match Pairing, Second Color

6. After selecting the correct color in the above step, the color of the light will change to a third random color. Again, select the color tile that matches the color of the light. See screen shot 6.



Screen Shot 6: Color match Pairing, Third Color

7. After matching the color of the light 3 times, correctly, in the steps above, a message will appear that states “Pairing Status Paired”. You may then control the light you are connected to. See screen shot 7.



Screen Shot 7: Pairing successful

App Settings:

# User Manual

## Vista – Bluetooth on Flexi-tape

In the app settings, the user may define the default home screen to be either the “lights” screen or the “groups” screen. To navigate to the settings, do the following:

1. Select the menu bar in the upper left-hand corner of the app.
2. Select “Settings” in the menu bar screen.
3. Select either “lights” or “groups” on the “Default Homescreen” button.

### SPECIFICATIONS

#### Electrical:

Operating Voltage: 11 to 15 VDC

Supply Current: 4.1 A max

Power: 58 W max

#### Environmental:

Operating Temperature: -20 to 60 °C

IP Rating: IP65 (Suitable for outdoor locations)

#### Light Output:

Light colors:

Red:

Green:

Blue:

#### Dimensions:

Maximum height: 3.5 mm (0.1 in)

Maximum width: 11.0 mm (0.4 in)

Maximum length: 8,311 mm (327.2 in), Cuttable in 0.5 m (19.7 in) sections

Minimum bend radius: 19 mm (0.75 in)

Length of ridged controller section: 95 mm (3.7 in)

Length of flexible LED section: Variable in 0.5 m increments up to 8 meters

Length of led wires: 96 in

### REGULATORY STATEMENTS

**FCC COMPLIANCE STATEMENT:** CAUTION: Changes or modifications not expressly approved could void your authority to use this equipment. This device complies with Part 15 of the FCC Rules. Operation to the following two conditions: (1) This device may not cause harmful interference, and (2) this device must accept any interference received, including interference that may cause undesired operation

**INDUSTRY CANADA STATEMENT:** This device complies with Industry Canada license-exempt RSS standard(s). Operation is subject to the following two conditions: (1) this device may not cause interference, and (2) this device must accept any interference, including interference that may cause undesired operation of the device.

Le présent appareil est conforme aux CNR d'Industrie Canada applicables aux appareils radio exempts de licence. L'exploitation est autorisée aux deux conditions suivantes : (1) l'appareil ne doit pas produire de brouillage, et (2) l'utilisateur de l'appareil doit accepter tout brouillage radioélectrique subi, même si le brouillage est susceptible d'en compromettre le fonctionnement.

# User Manual

## Vista – Bluetooth on Flexi-tape

### WARRANTY STATEMENT

**GENERAL LIMITED WARRANTY:** Vista warrants, to the original customer, that all LED products will be free of defect in material and/or workmanship for a period of two years from the original date of purchase. This warranty will be voided if the product is damaged or rendered inoperable by accident of incident, improper installation, unreasonable or improper use, vandalism, user modification or alteration, negligence, abuse, lack of maintenance, unauthorized repair, disassembly, improper handling, applied voltage or other changes unrelated to materials and/or workmanship.

**MAXIMUM LIABILITY:** Vista's liability to repair or replace a damaged item shall be limited to original purchaser of the item at the original purchase price of the damaged unit for two years from date of purchase. All liability of Vista shall be limited to and fully discharged by repair or replacement of such defective items without charge. In no event, whatsoever shall Vista be liable for incidental or consequential damages, including without limitation, removal or reinstallation costs, personal injury or property damages. Vista's liability shall not exceed Vista's invoiced price for the product on any claim arising from its use.

**INSPECTION:** Vista reserves the right to review the damaged item and the site where the damage occurred. Vista may require the purchaser to ship the items to Vista for inspection and the cost of such shipping shall be borne solely by the purchaser. The damaged item must remain available for inspection until the claim is finalized.

**EVENTS THAT VOID WARRANTY:** All above warranties are null and void if any or more of the following event occur;(a) the item is not provided to Vista for inspection upon Vista's request; (b) Vista determines that the item has been improperly installed, altered in any way or tampered with; and/or (c) Vista determines that the item was not used under normal operating conditions or in accordance with label or instructions for the item. In addition to the foregoing, this Warranty does not protect against damage to the item when Vista determines, in its sole discretion, that the damage resulted from acts of God such as lightning, flood, earthquake, war, vandalism, theft, normal-use wear and tear, corrosion, abuse, non-authorized program or system equipment modification or alteration.

**EXCLUSIVE REMEDY:** This Warranty contains the sole warranty of Vista with respect to the item and is given in lieu of all other warranties. There are no other warranties, express or implied, including implied warranties or merchantability or fitness for a purpose and any implied warranties that cannot be waived and/or excluded are hereby limited in duration to the terms of this Warranty.

**CREDIT OR REPLACEMENT PARTS:** Credit or replacement will not be issued for materials returned without a Returns Good Authorization (RGA). Simply call Vista at our corporate office at (574) 264-0711 with an itemized list of goods, reason for return, and quantities to be returned. Once an RGA number has been issued to you, simply return the product, to Vista at the address given. Once the goods have been evaluated by our quality personnel, a credit will be issued or replacement parts will be shipped. Credit will be issued for products only, no freight or labor will be credited, unless agreed to in advance. Replacement parts will be sent at no charge, freight prepaid. Vista reserves the right to choose any of these options at its discretion.

**DAMAGED GOODS:** If you received damaged product from UPS or Common Carrier, please do not return product to Vista. Contact the shipper to initiate a claim. If you receive damaged goods through a Vista delivery, please contact your sales representative or Vista directly. Buyer understands and agrees that this purchase is subject to the limited Warranty attached hereto. Venue for any dispute arising or relating to this agreement shall lie exclusively in Elkhart County, Indiana.