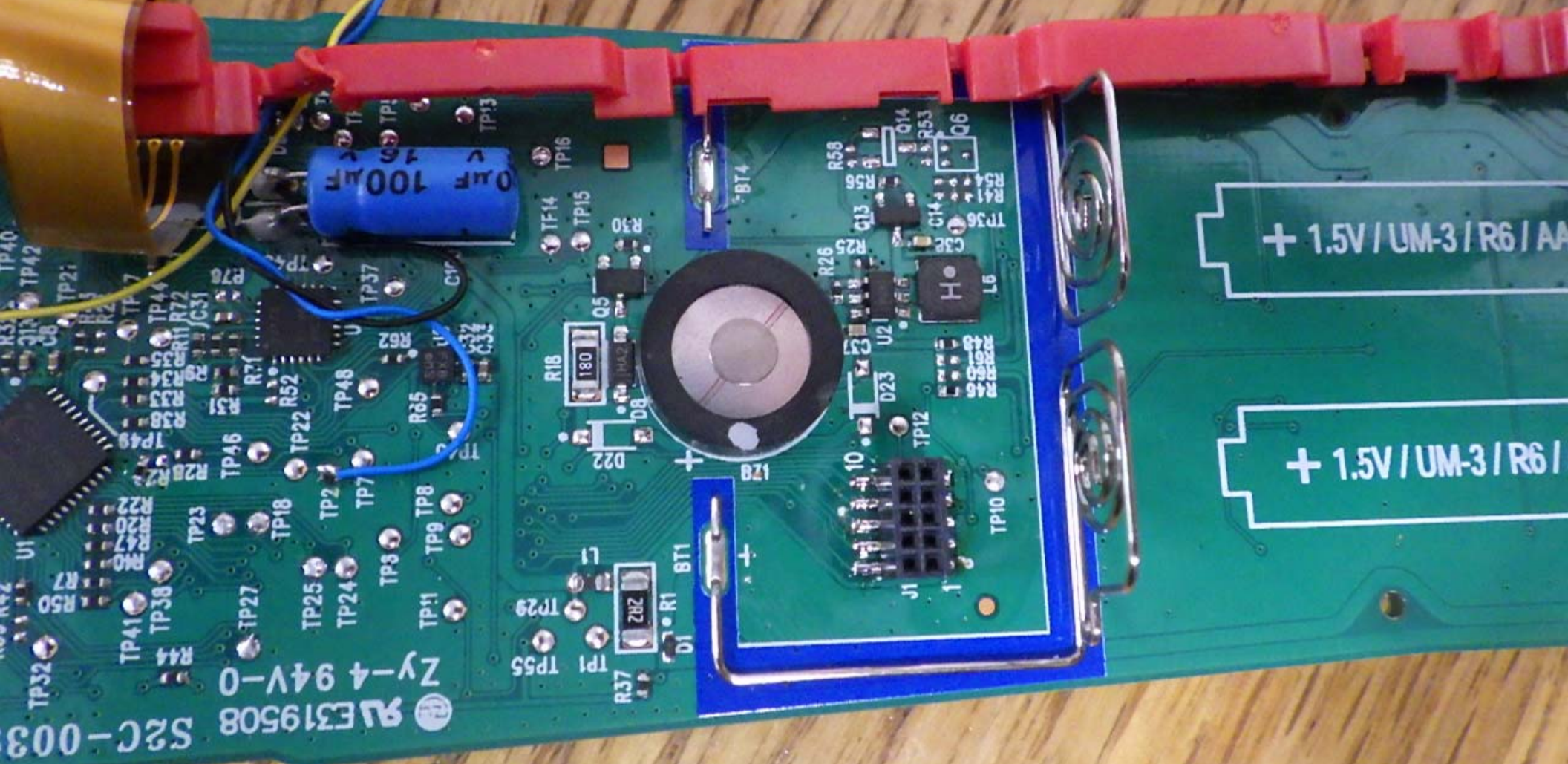
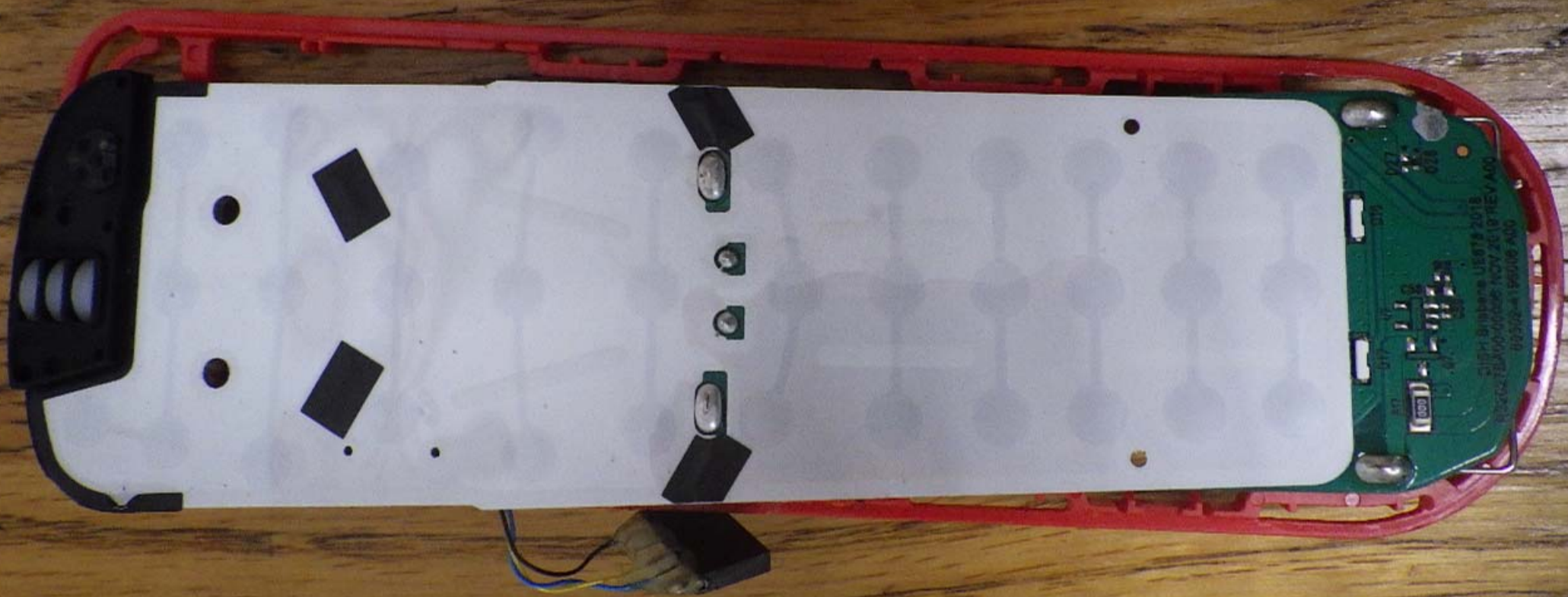


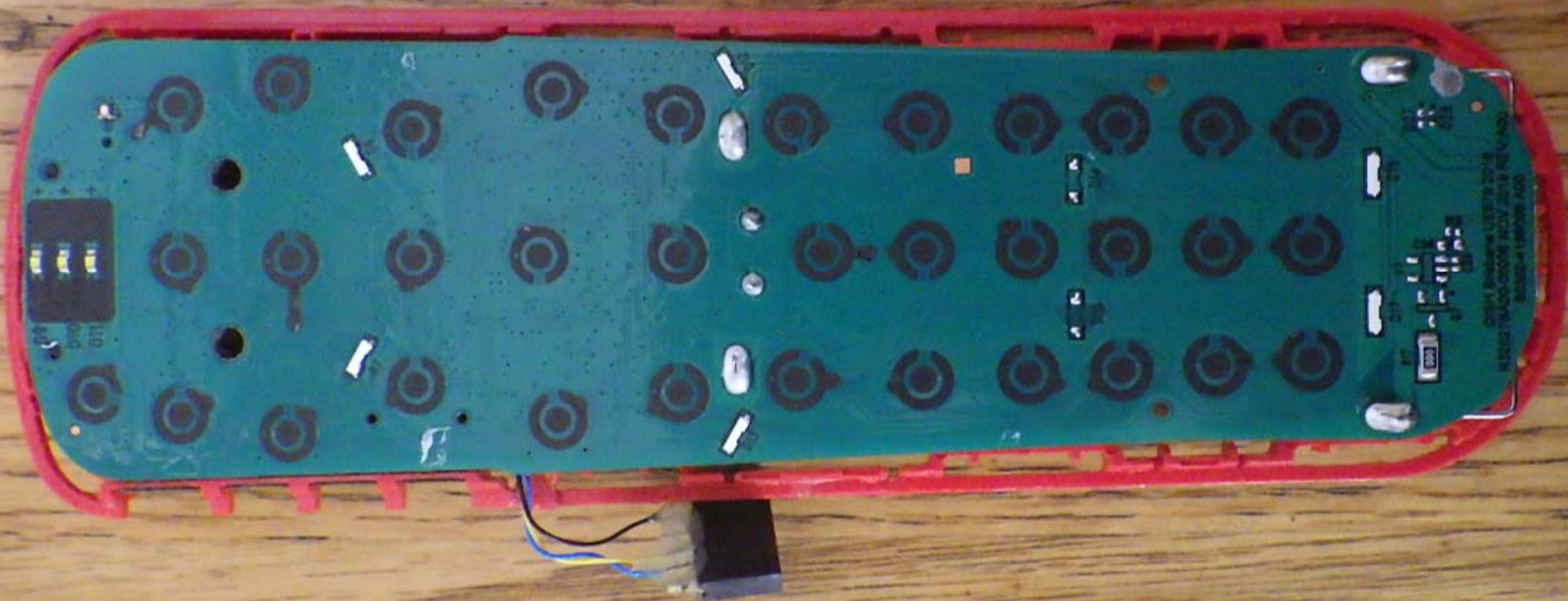
S2C-003
AV E319508
Zy-4 94V-0

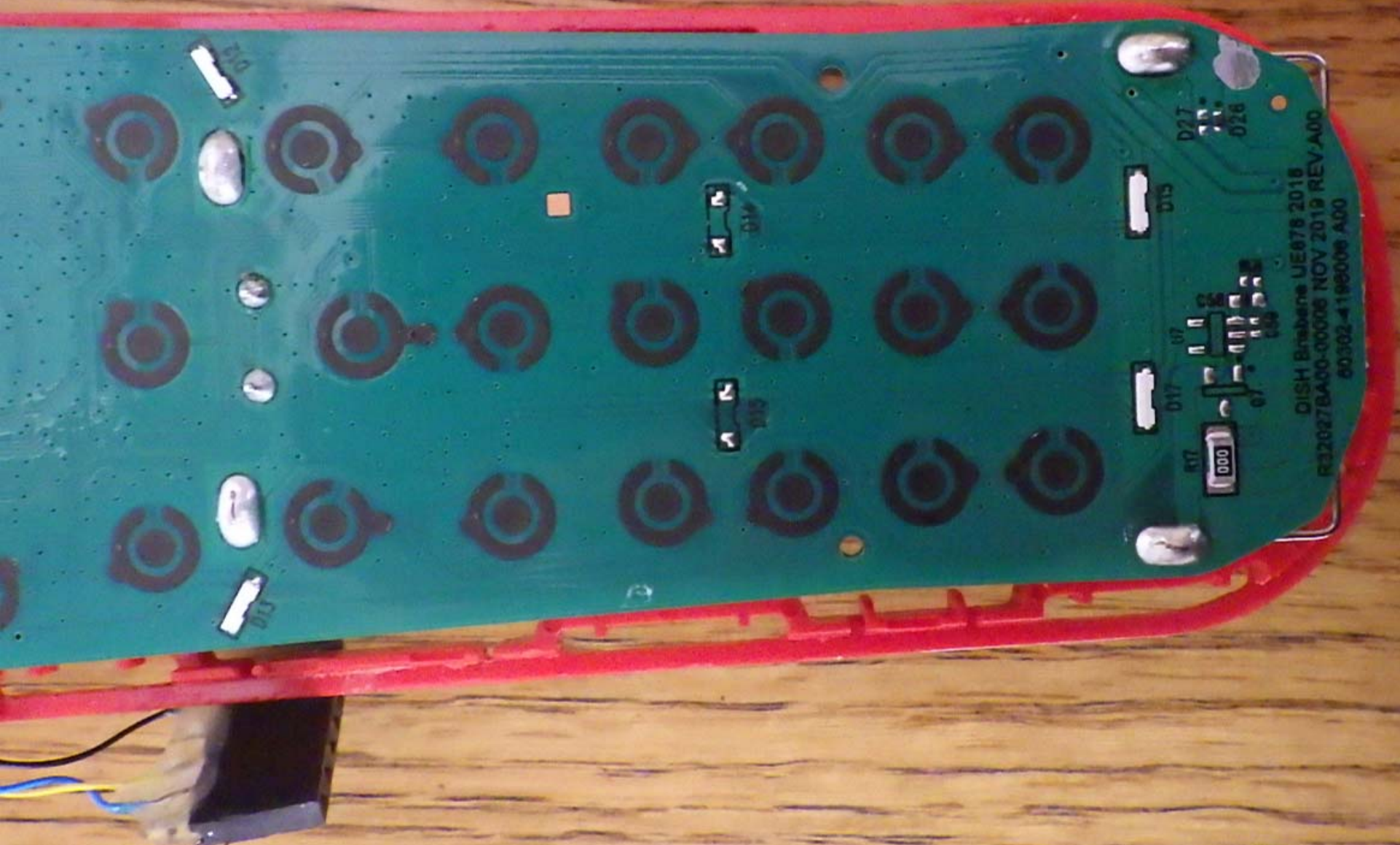


+ 1.5V / UM-3 / R6 / AA

+ 1.5V / UM-3 / R6 /







QISH Brisbane UE678 2018
R32027BA00-00006 NOV 2019 REV-A00
60302-198006 A00

D27
026

D15

U7
017

000

014

012

010

011

