

JR8
R54

R57
R58
R1
R4
R19
R30
R31
R50

RESET
JR1
JR2
VDD

TDO
TMS
TDI
TCK

U2
23

LED18
+

LED17
+

LED24
+

LED23
+



JP

LED15 +

LED21 +

JP2



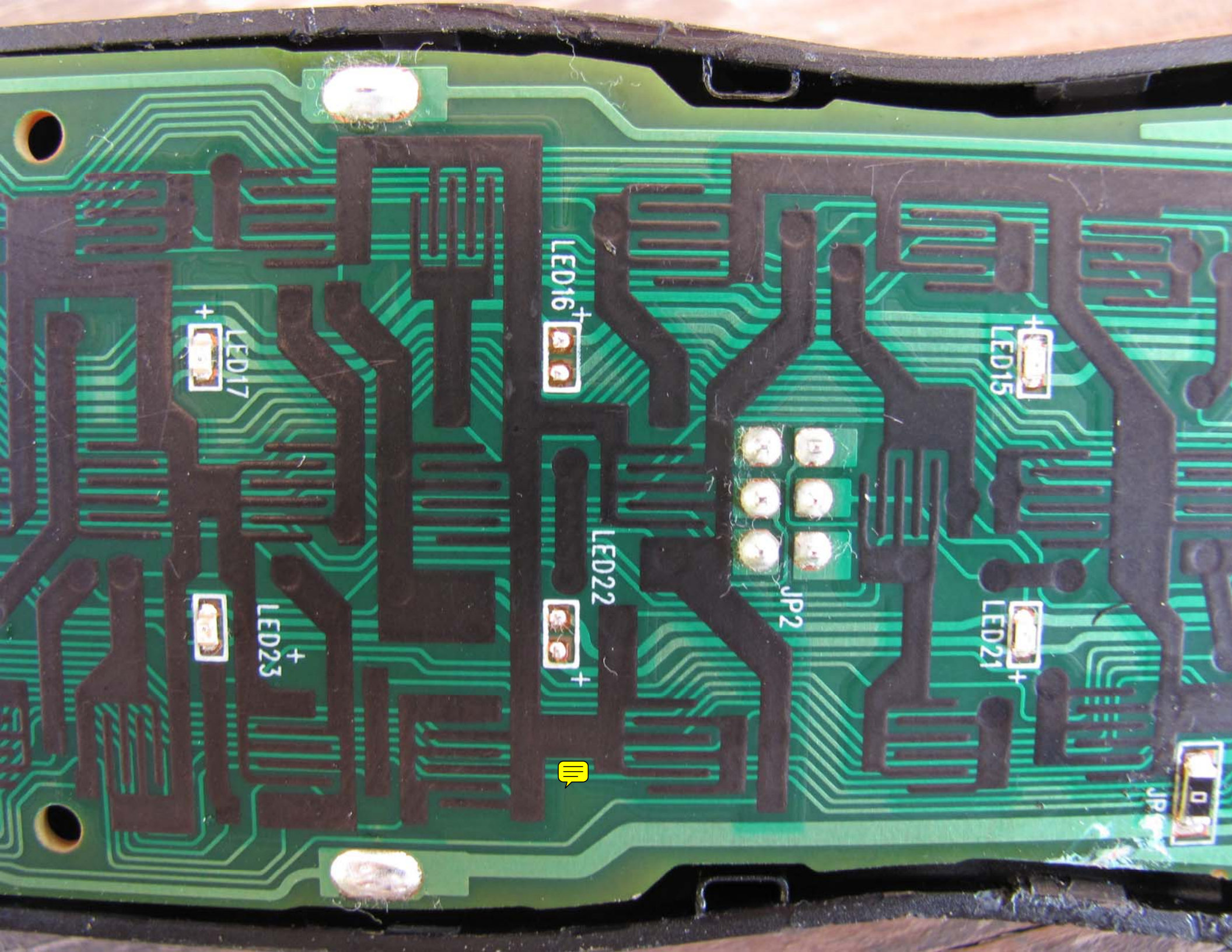
LED16 +

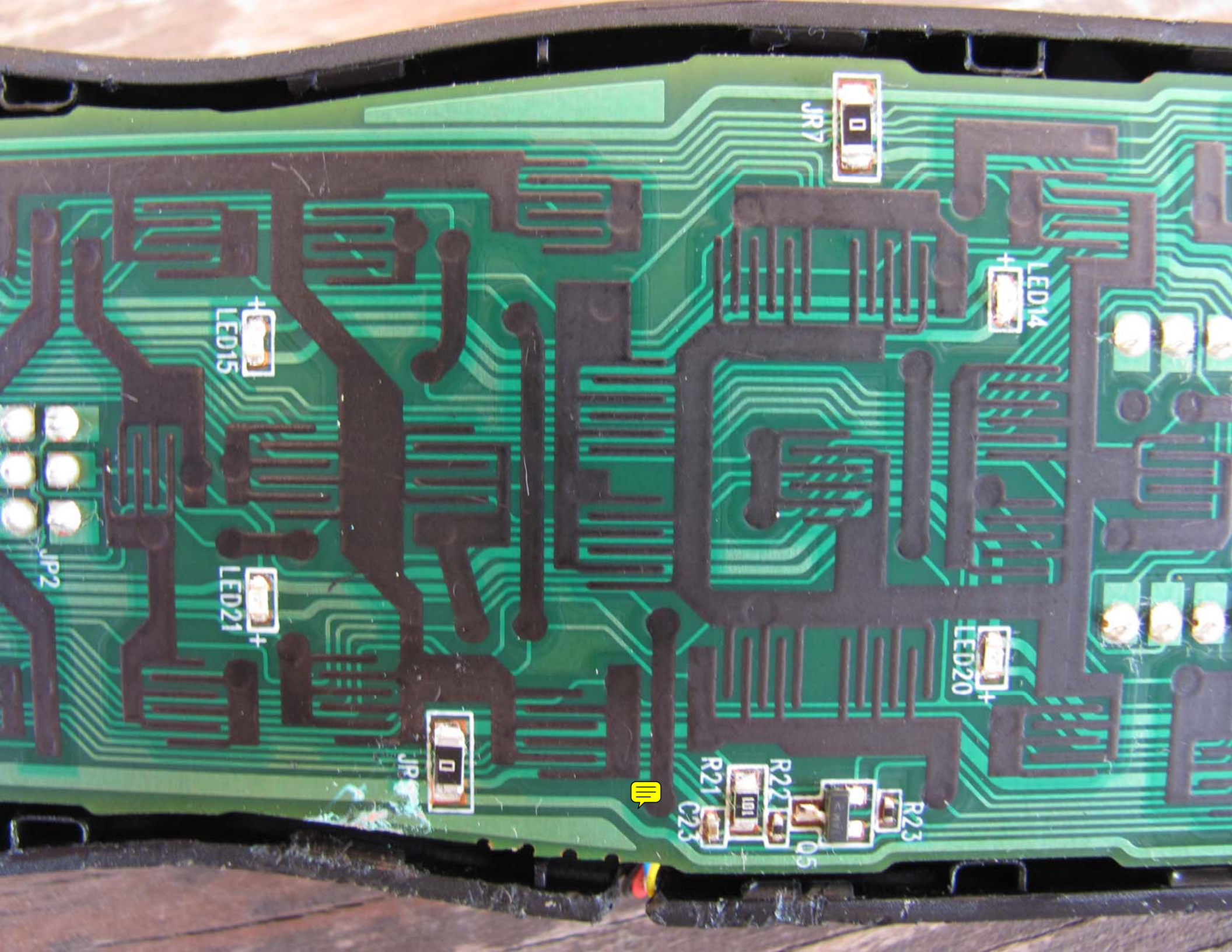
LED22 +



LED17 +

LED23 +





JR7

LED14

LED15

LED20

LED21

JP

JP2

R21

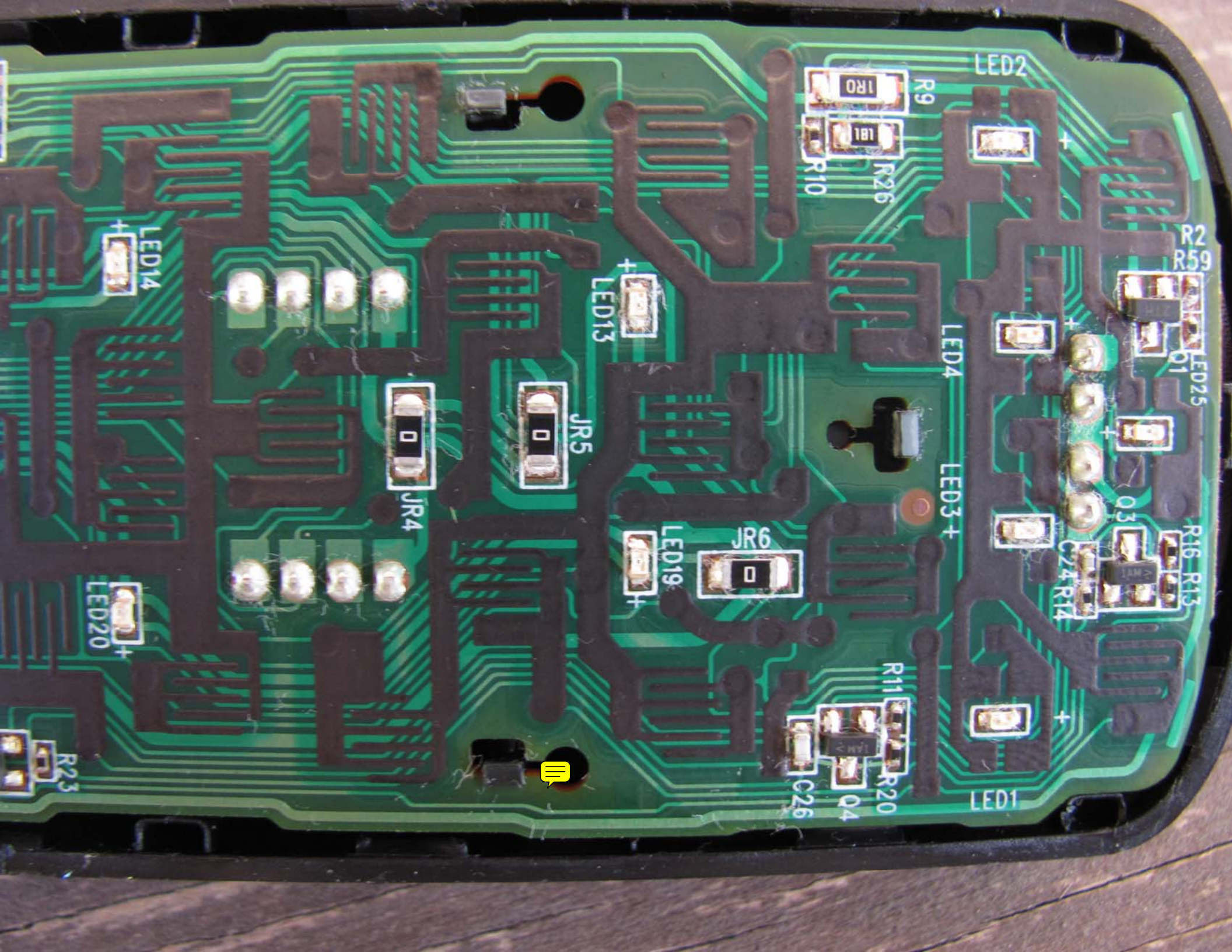
R22

R23

101

05





LED2

R9

R10

R26

R2

R59

LED25

Q1

R16

R13

C24

R14

LED4

LED3+

LED1

R11

R20

C26

Q4

LED13

JR5

LED19

JR6

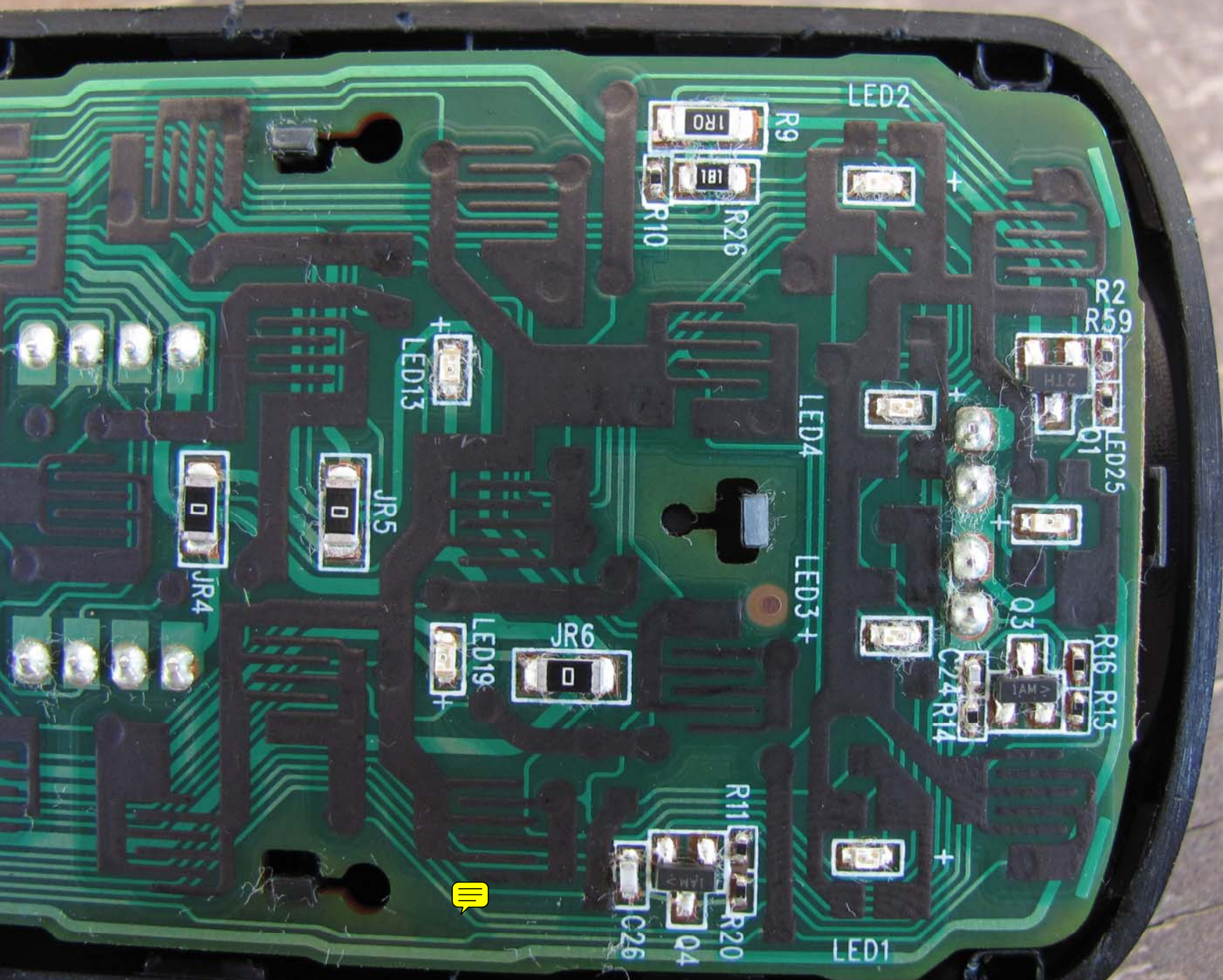
JR4

LED14

LED20

R23





LED2

R9

1R0

1B1

R26

R10

R2
R59

LED25

R16 R13

LED4

LED3+

LED1

LED13

JR5

JR4

JR6

LED19

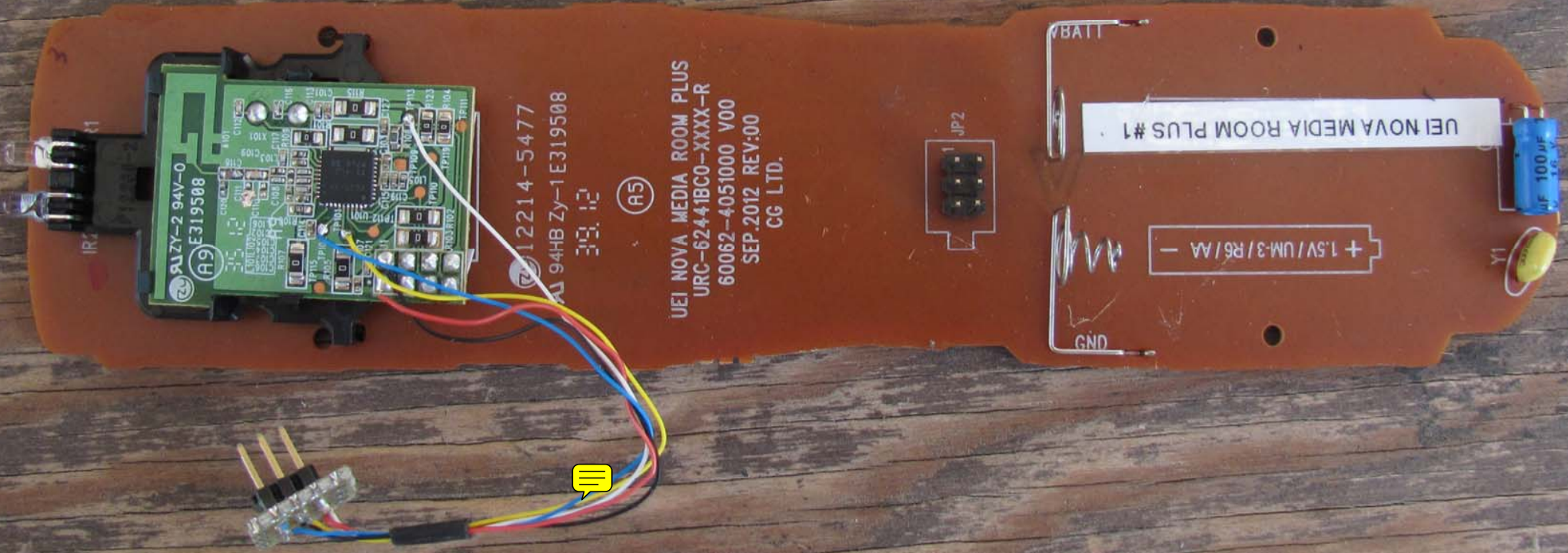
R11

R20

Q4

C26





AIZY-2 94V-0
E319588
A9

12214-5477
94HB Zy-1 E319508
3/9/12

A5

UEI NOVA MEDIA ROOM PLUS
URC-6244IBC0-XXXX-R
60062-4051000 V00
SEP.2012 REV:00
CG LTD.

V BATT
GND

JP2

+ 1.5V/UM-3/R6/AA -

UEI NOVA MEDIA ROOM PLUS #1

M1

100 µF





+ 1.5V/UM-3/R6/AA -

UEI NOVA MEDIA ROOM PLUS #1

UEI NOVA MEDIA ROOM PLUS
URC-62441BC0-XXXX-R
60062-4051000 V00
SEP.2012 REV.00
CG LTD.

(A5)

12214-5477

94HB Zy-1E319508

39.12

GND

JP2

R1

R1



ZY A1ZY-2 94V-0
E319508

A9

CC2538A
T1 18J
P7CC G4

TP115 TP101 TP112 U101 TP110 TP109 TP113 TP111

R105 R107 R108 R109 R110 R111 R112 U101 R113 R114 R115 R123 R104

C106 C107 C108 C109 C110 C111 C112 C113 C114 C115 C116 C117 C118 C119 C120

L101 L102 L103 L104 L105 L106 L107 L108 L109 L110 L111 L112 L113 L114 L115 L116 L117 L118 L119 L120

A101 X101

TP101 TP102 TP103 TP104 TP105 TP106 TP107 TP108 TP109 TP110 TP111 TP112 TP113 TP114 TP115

R101 R102 R103 R104 R105 R106 R107 R108 R109 R110 R111 R112 R113 R114 R115 R116 R117 R118 R119 R120 R121 R122 R123 R124 R125

C101 C102 C103 C104 C105 C106 C107 C108 C109 C110 C111 C112 C113 C114 C115 C116 C117 C118 C119 C120

L101 L102 L103 L104 L105 L106 L107 L108 L109 L110 L111 L112 L113 L114 L115 L116 L117 L118 L119 L120

A101 X101

TP101 TP102 TP103 TP104 TP105 TP106 TP107 TP108 TP109 TP110 TP111 TP112 TP113 TP114 TP115

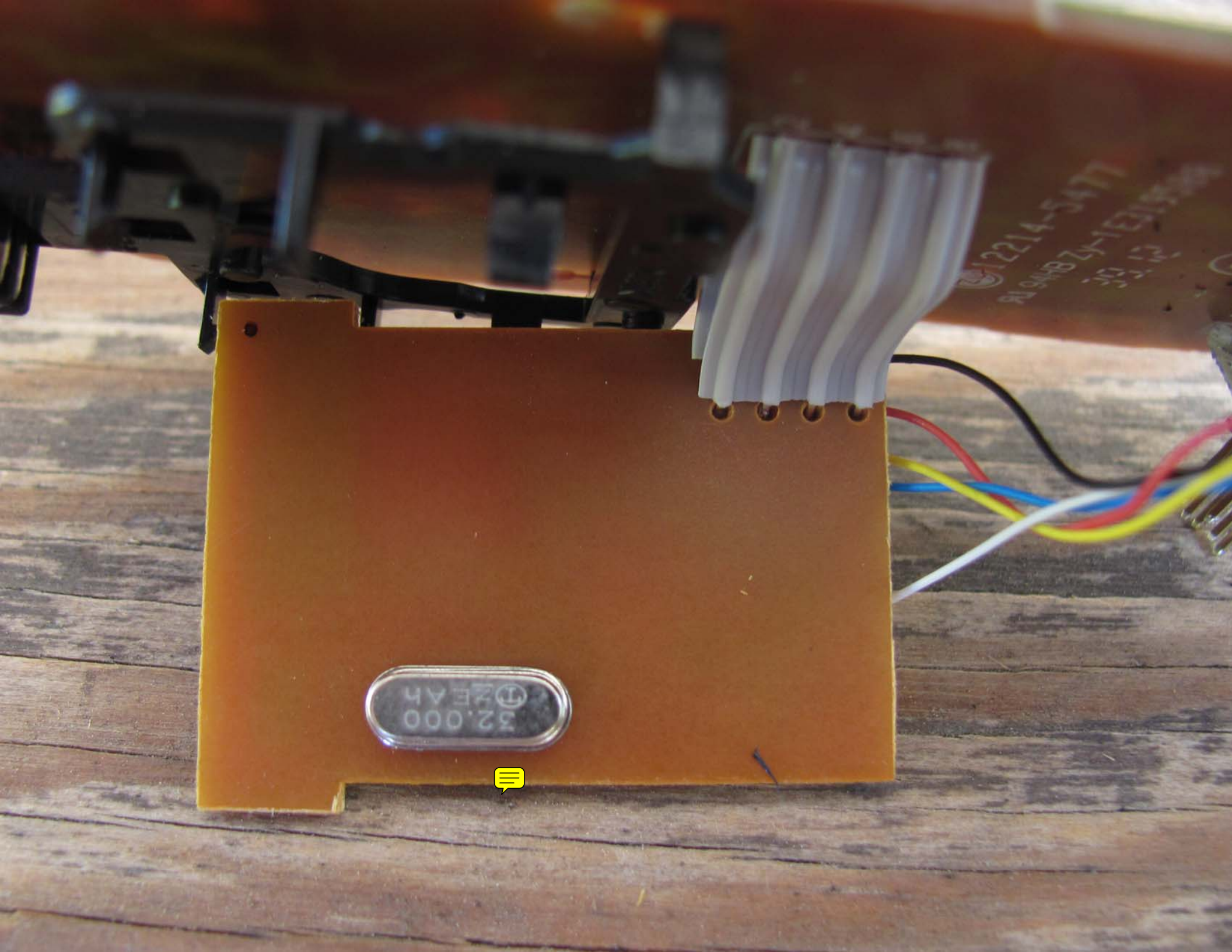
R101 R102 R103 R104 R105 R106 R107 R108 R109 R110 R111 R112 R113 R114 R115 R116 R117 R118 R119 R120 R121 R122 R123 R124 R125

C101 C102 C103 C104 C105 C106 C107 C108 C109 C110 C111 C112 C113 C114 C115 C116 C117 C118 C119 C120

L101 L102 L103 L104 L105 L106 L107 L108 L109 L110 L111 L112 L113 L114 L115 L116 L117 L118 L119 L120

A101 X101

ZY 12214-5477
E319508



32.000
2E Ah

12214-S177
21948 ZH-1818

