

AT&T VRC8x DFW Remote 2016
URC: 5601BC0-R
MAY.2017 REV:03
60142-4198000 V03

16213-6702
E319508
Zy-2 94V-0



2017

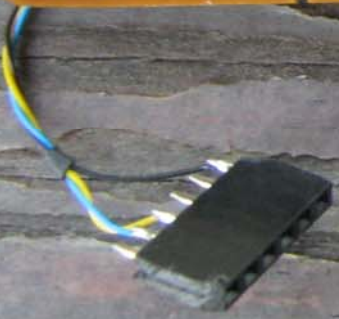
(B2)

1. This device may not cause harmful interference.
2. This device must accept any interference received, including interference that may cause undesired operation.

FCC ID: M63-5601
This device complies with part 15 of the FCC rules.
Operation is subject to the following two conditions:
1. Use AA Batteries only



V8A11



VBATT


① This device may not cause harmful interference.
② This device must accept any interference received, including interference that may cause undesired operation.

FCC ID: MG3-5601
Use AA Batteries only
① This device complies with part 15 of the FCC rules. Operation is subject to the following two conditions:

C18
+
N648 N648



AT&T VRC8x DFW Remote 2016
URC: 5601BC0-R
MAY.2017 REV:03
60142-4198000 V03

 16213-6702
9A E319508
Zy-2 94V-0



2017

 B2



D10



Y2



D16

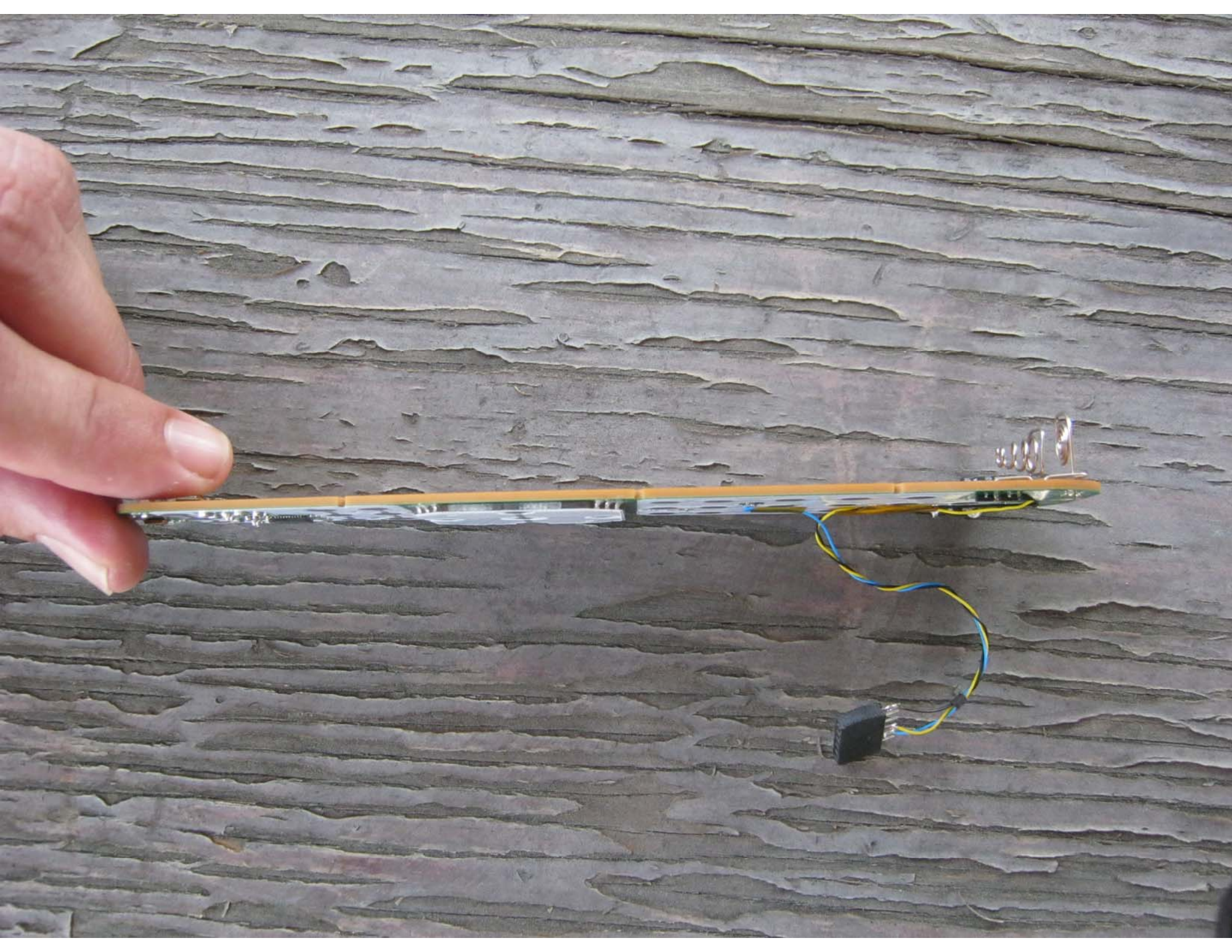
AT&T VRC8x DFW Remote 2016
URC: 5601BC0-R
MAY.2017 REV:03
60142-4198000 V03

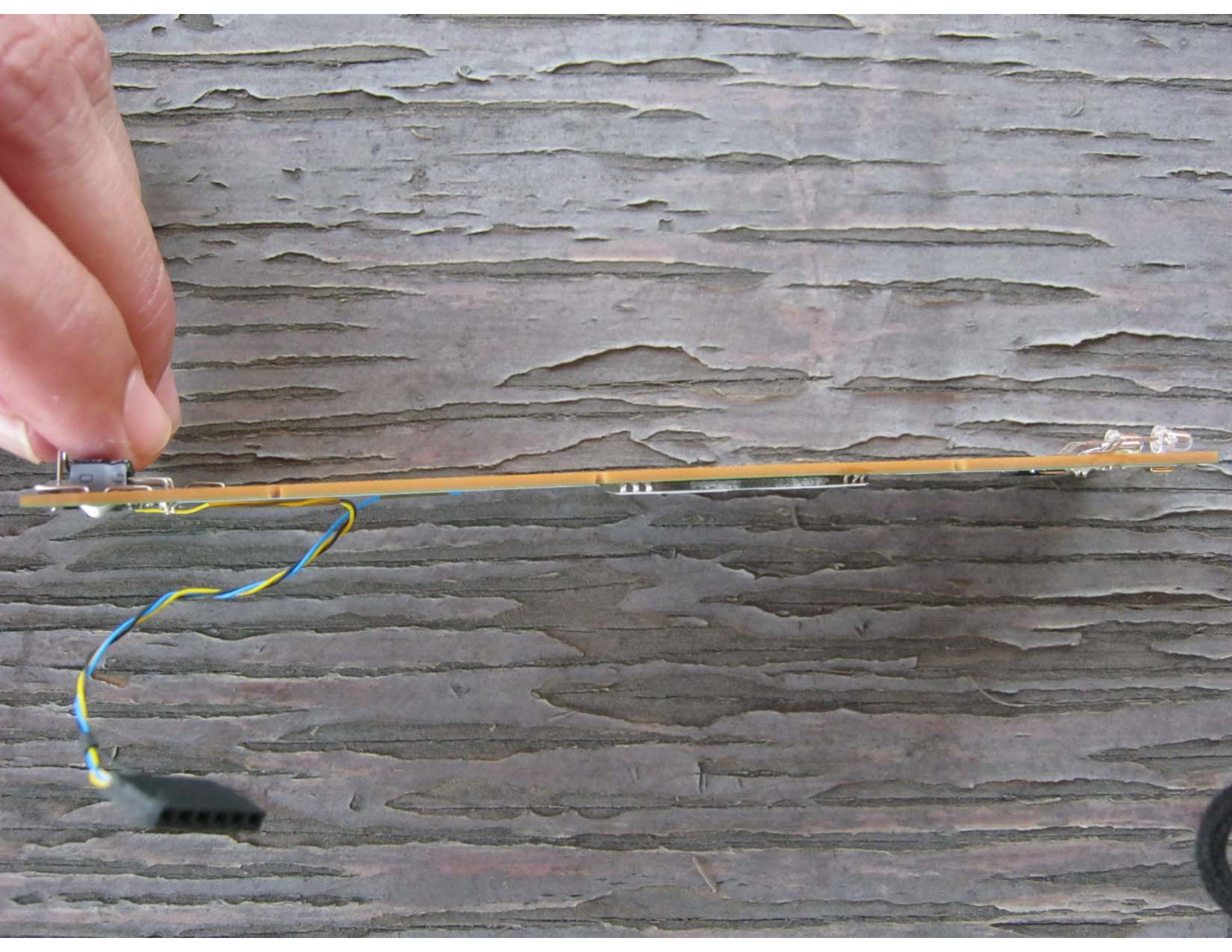


16213-6702

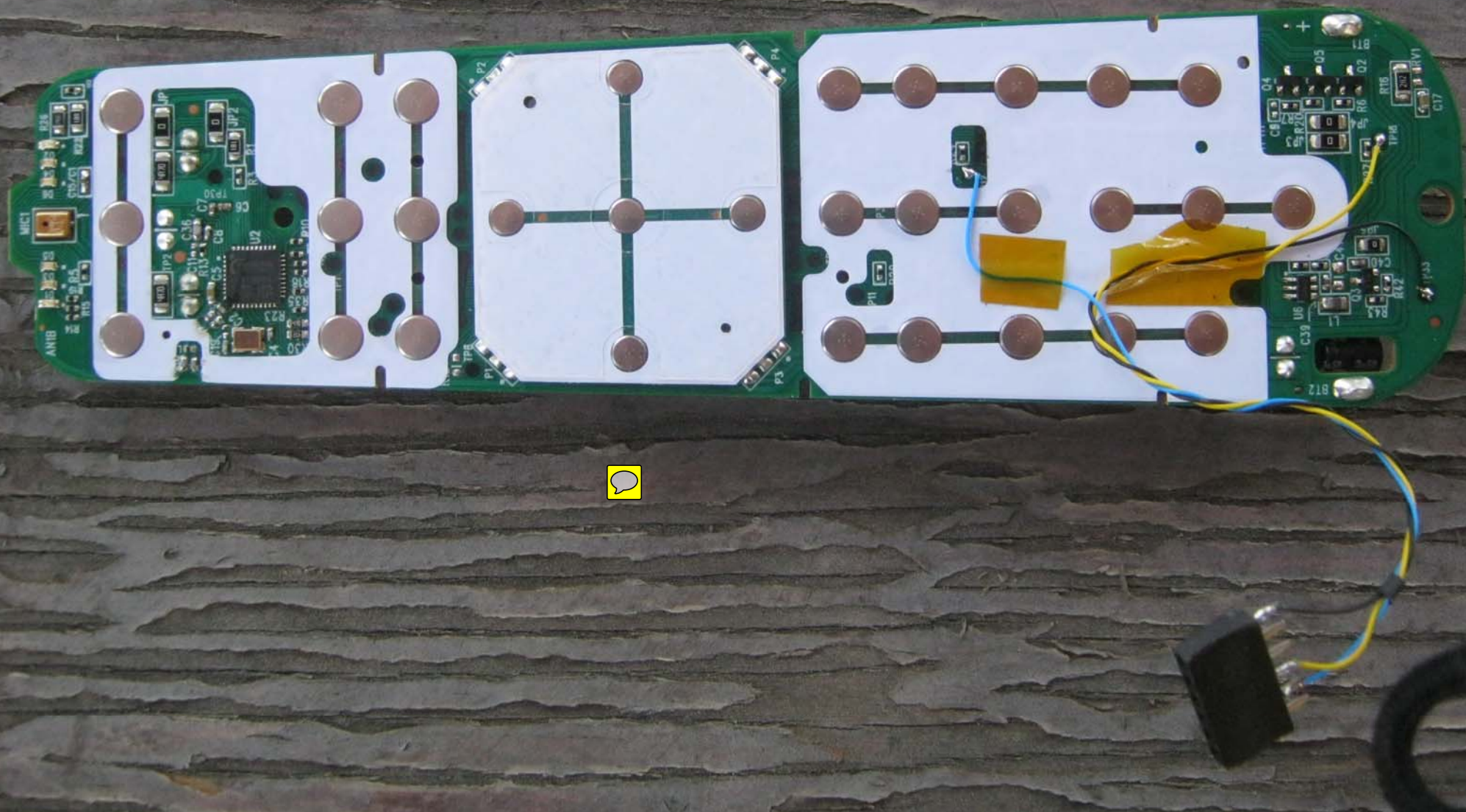
9A E319508

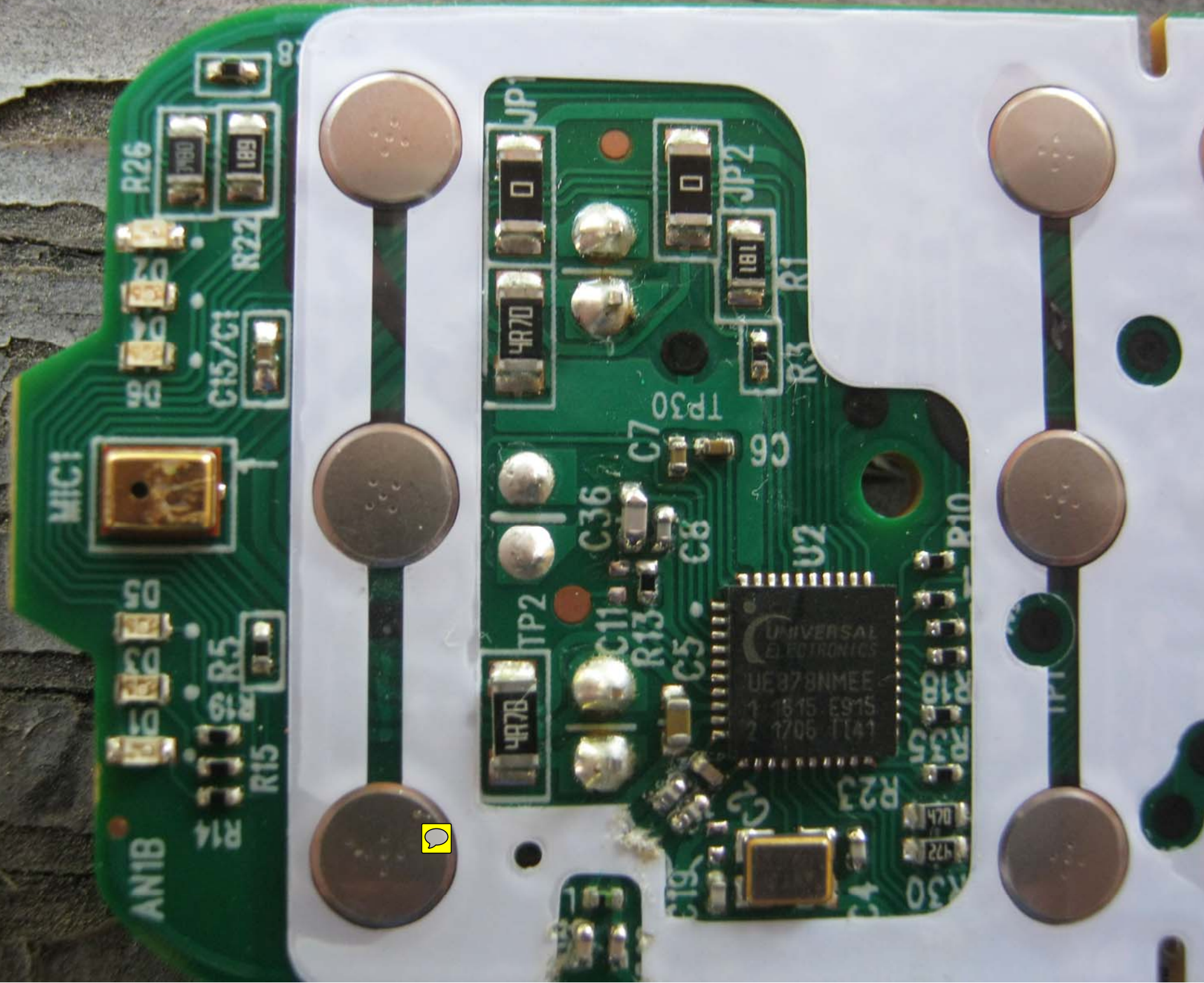
Zy-2 94V-0

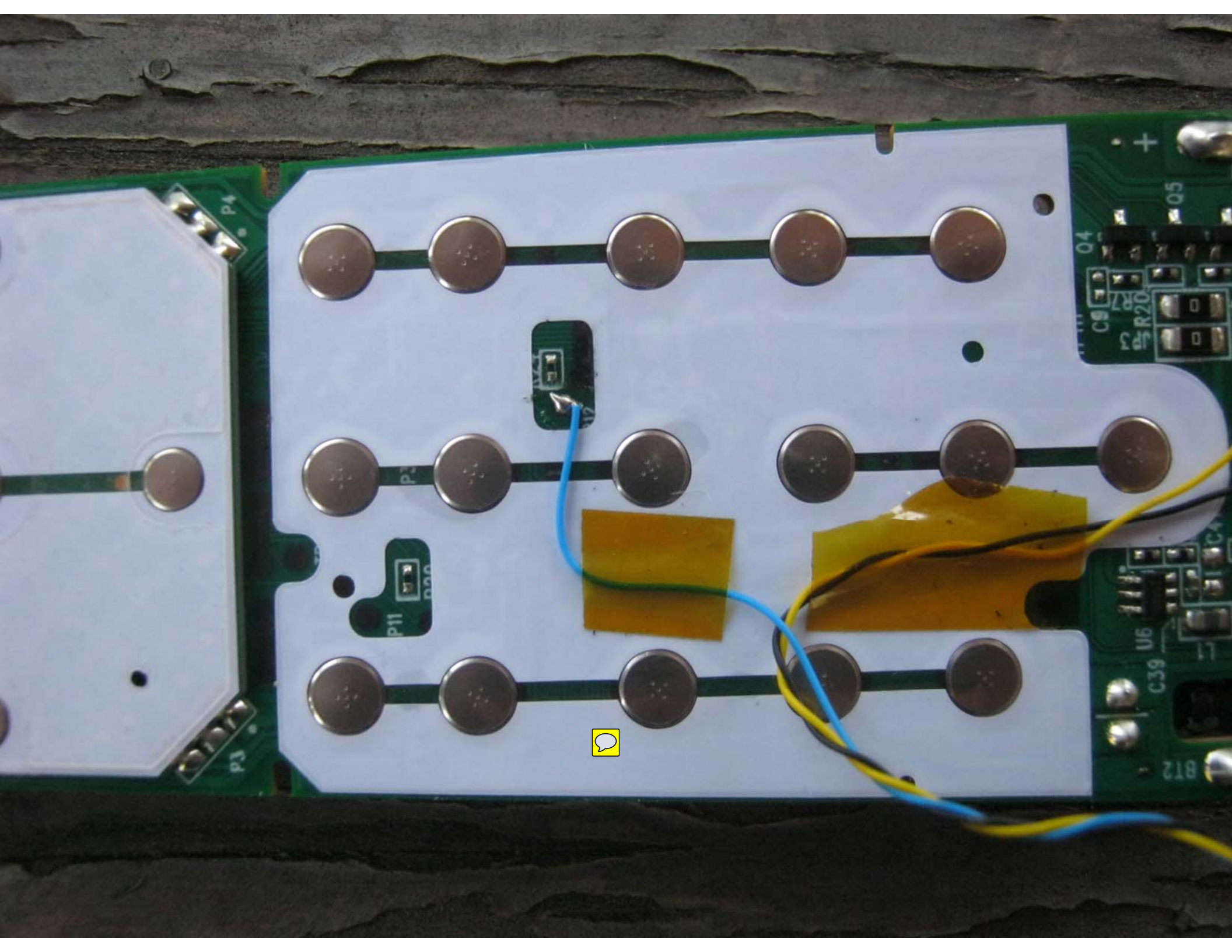


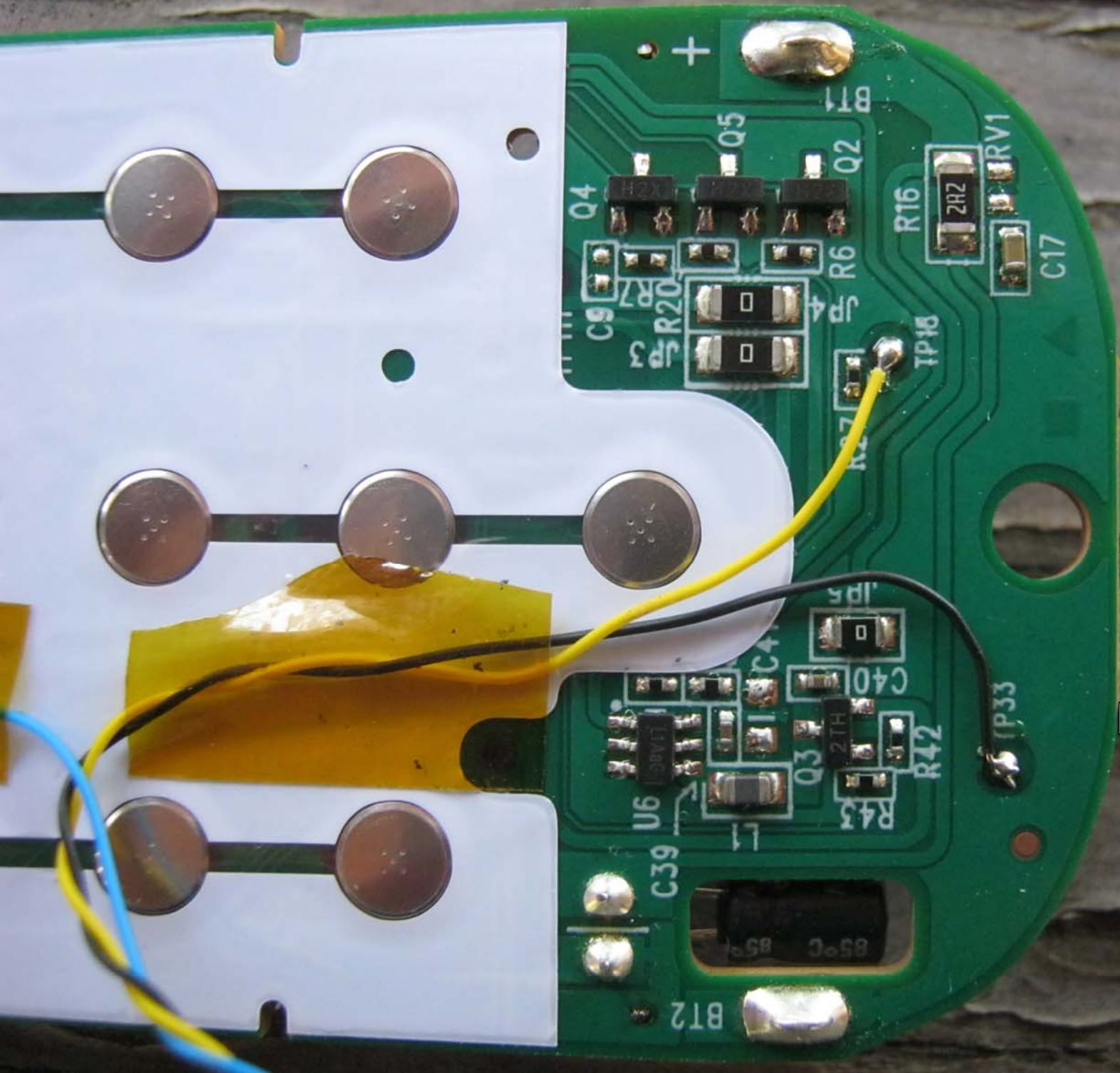


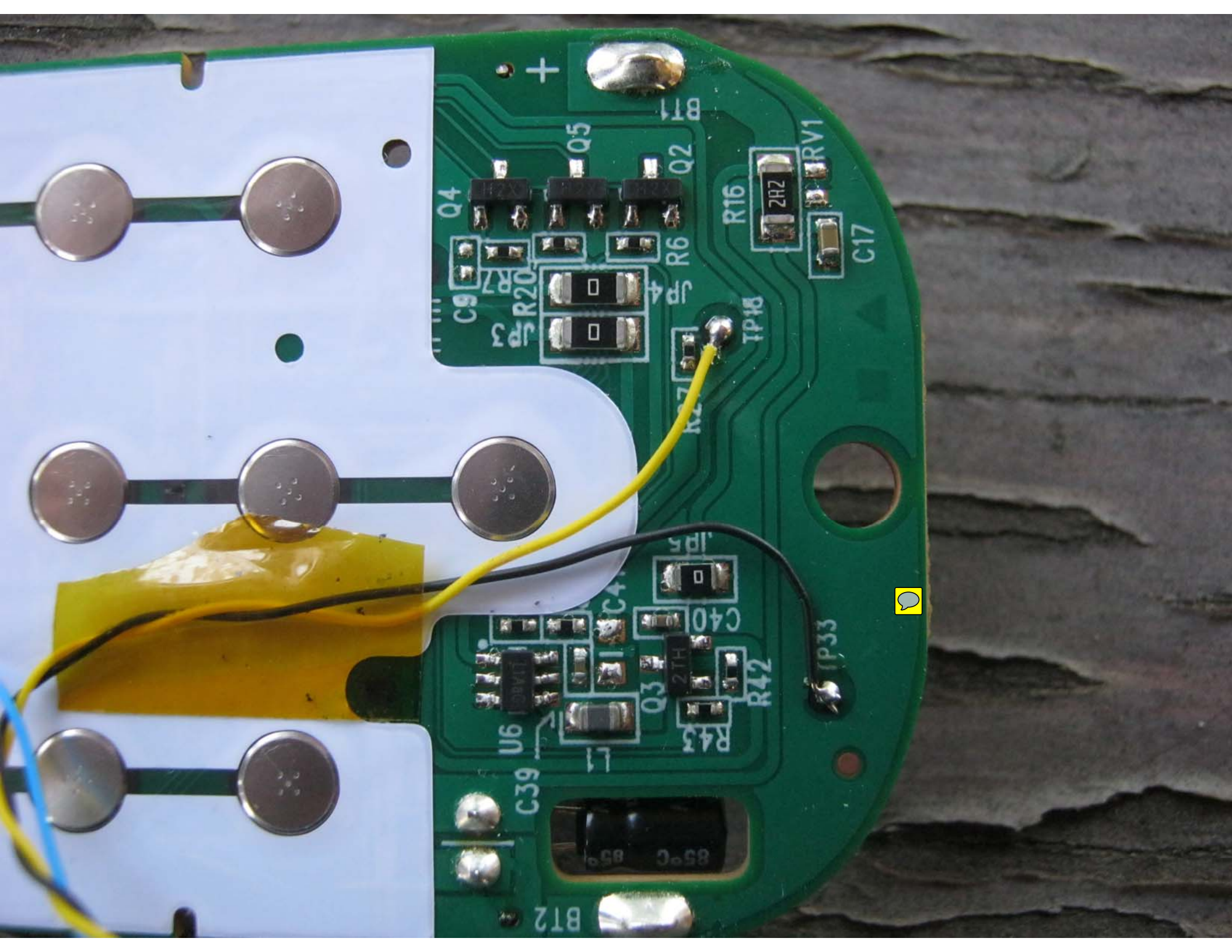


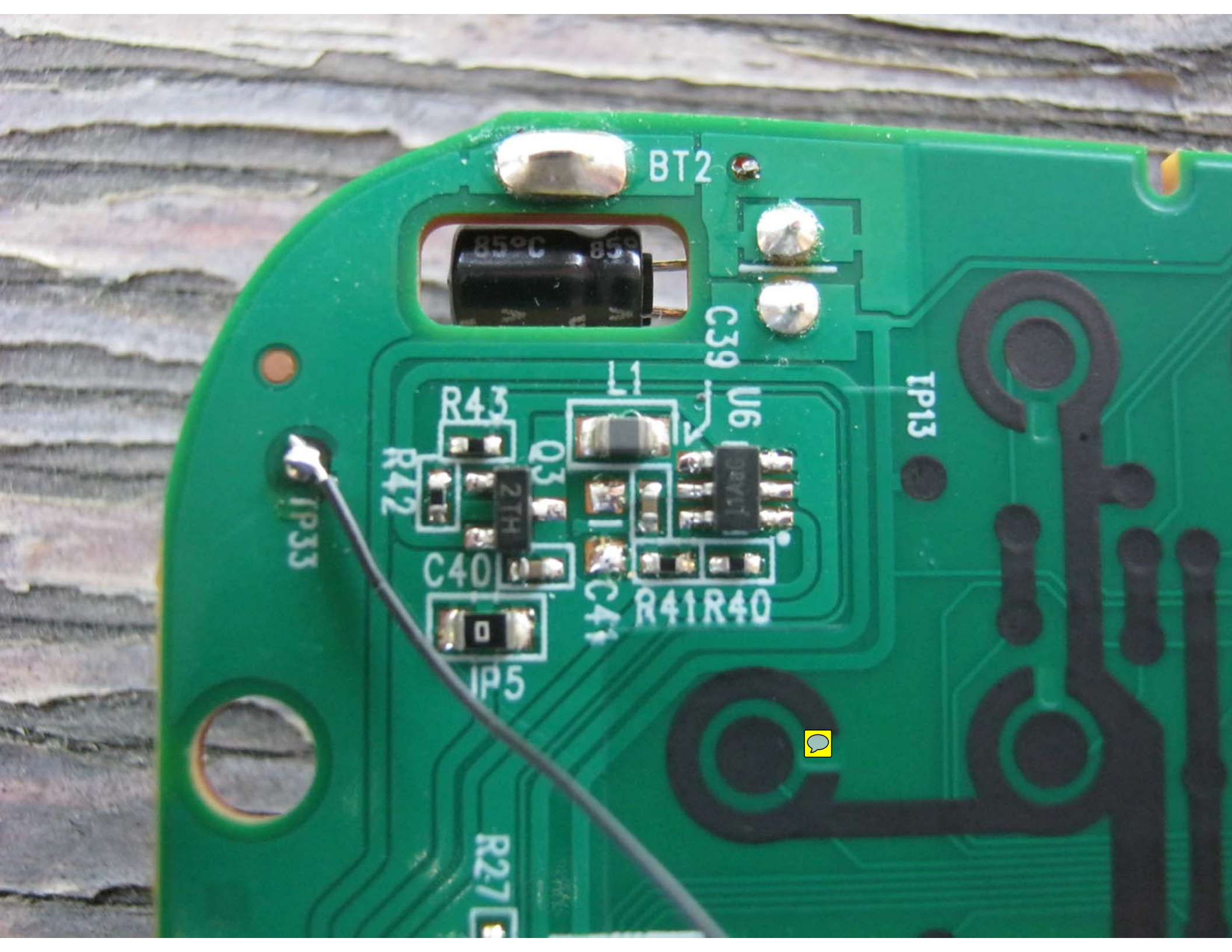












BT2

85°C 85°C

C39

IP13

R43

L1

U6

R42

Q3

2TH

13V

C40

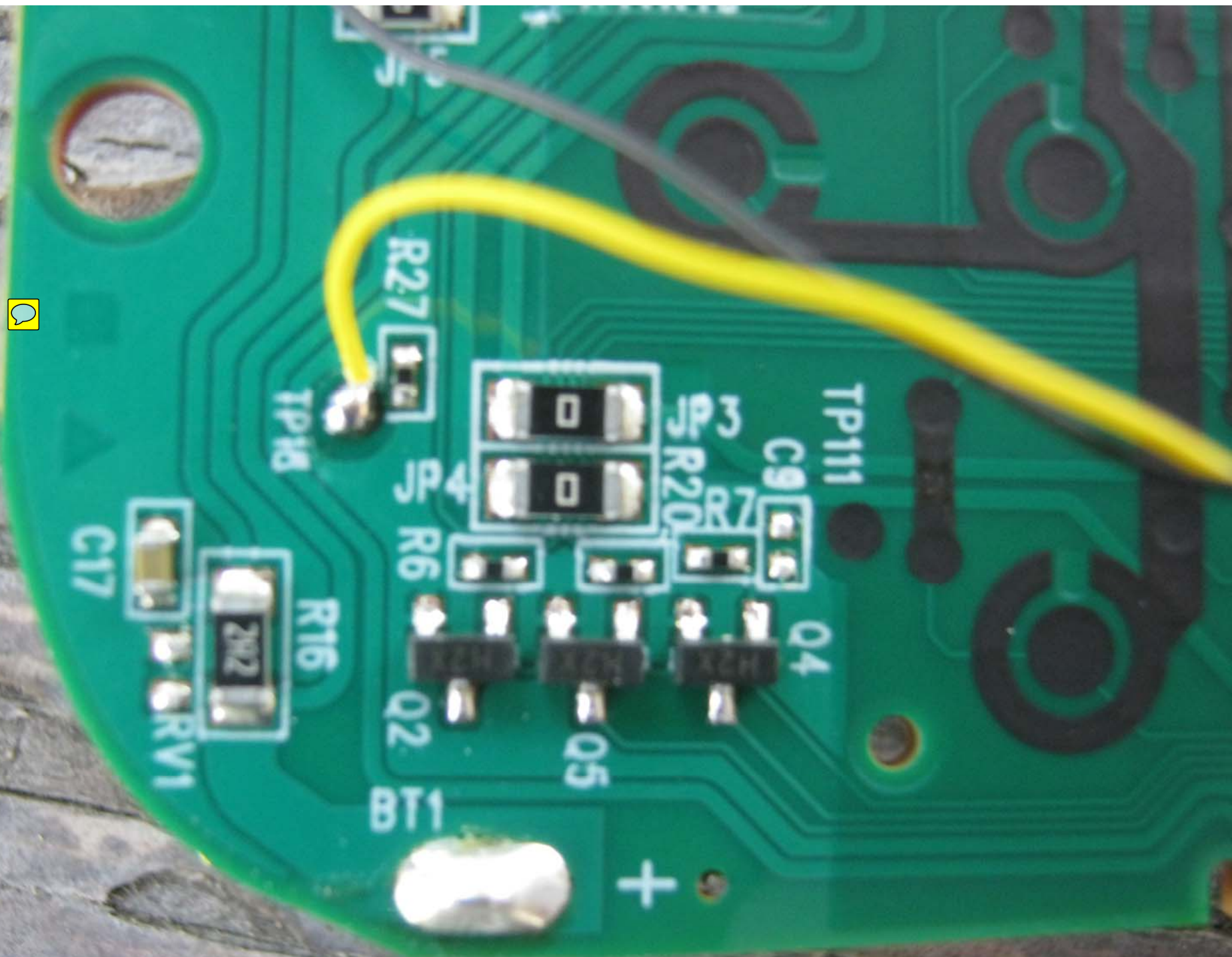
C41

R41 R40

IP33

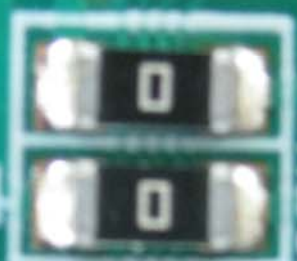
IP5

R27



R27

TP18



3

4

R20

R7

C9

TP11

Q4

Q5

Q2

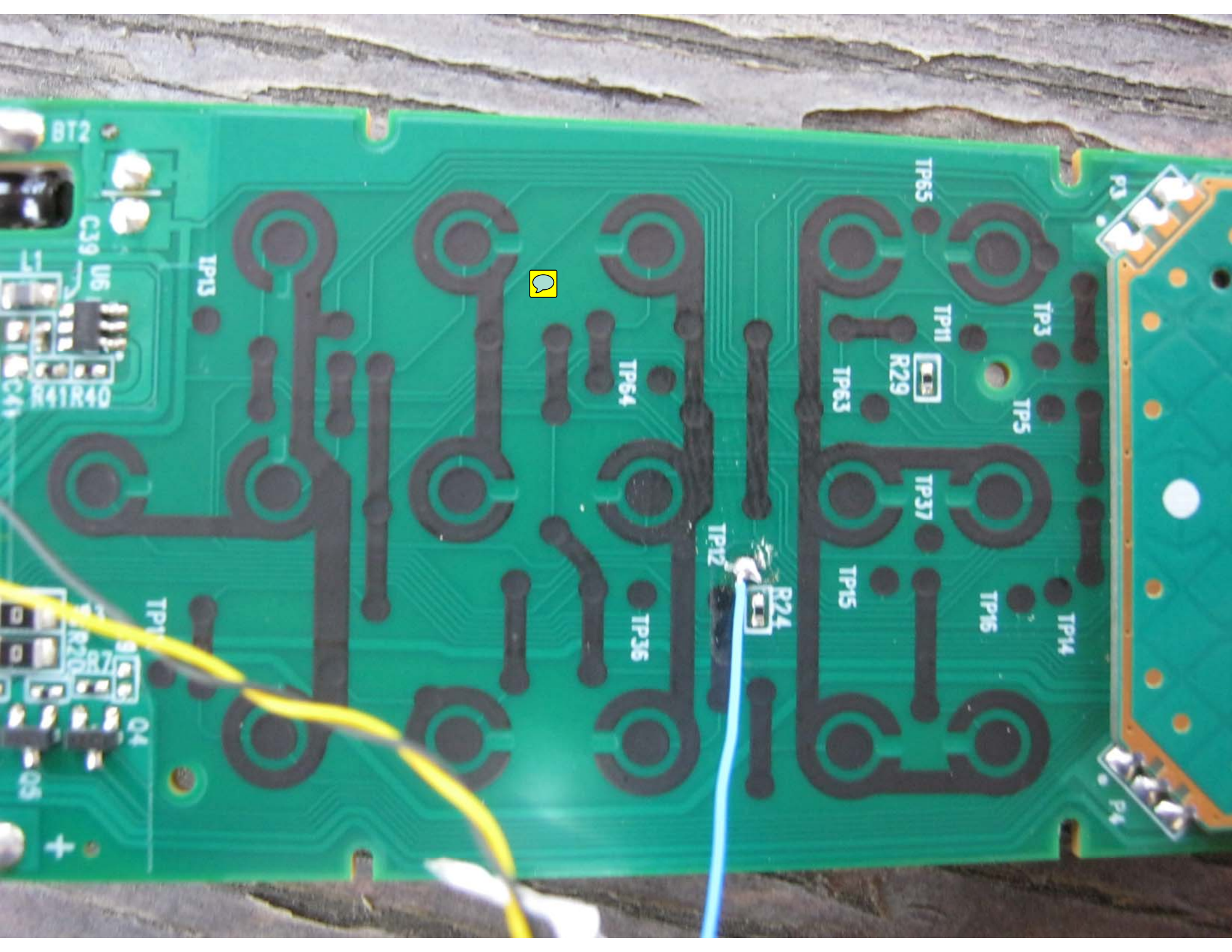
BT1

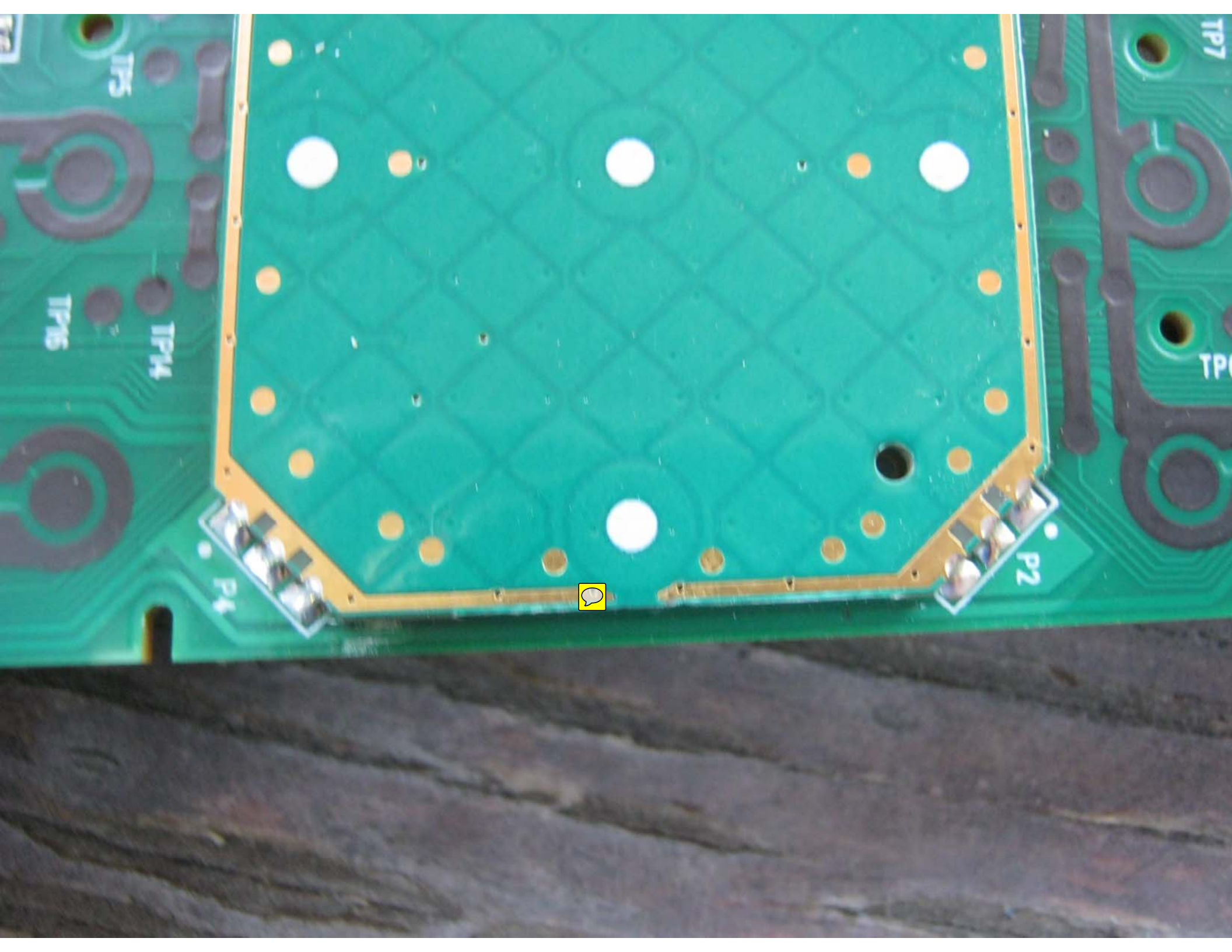
+

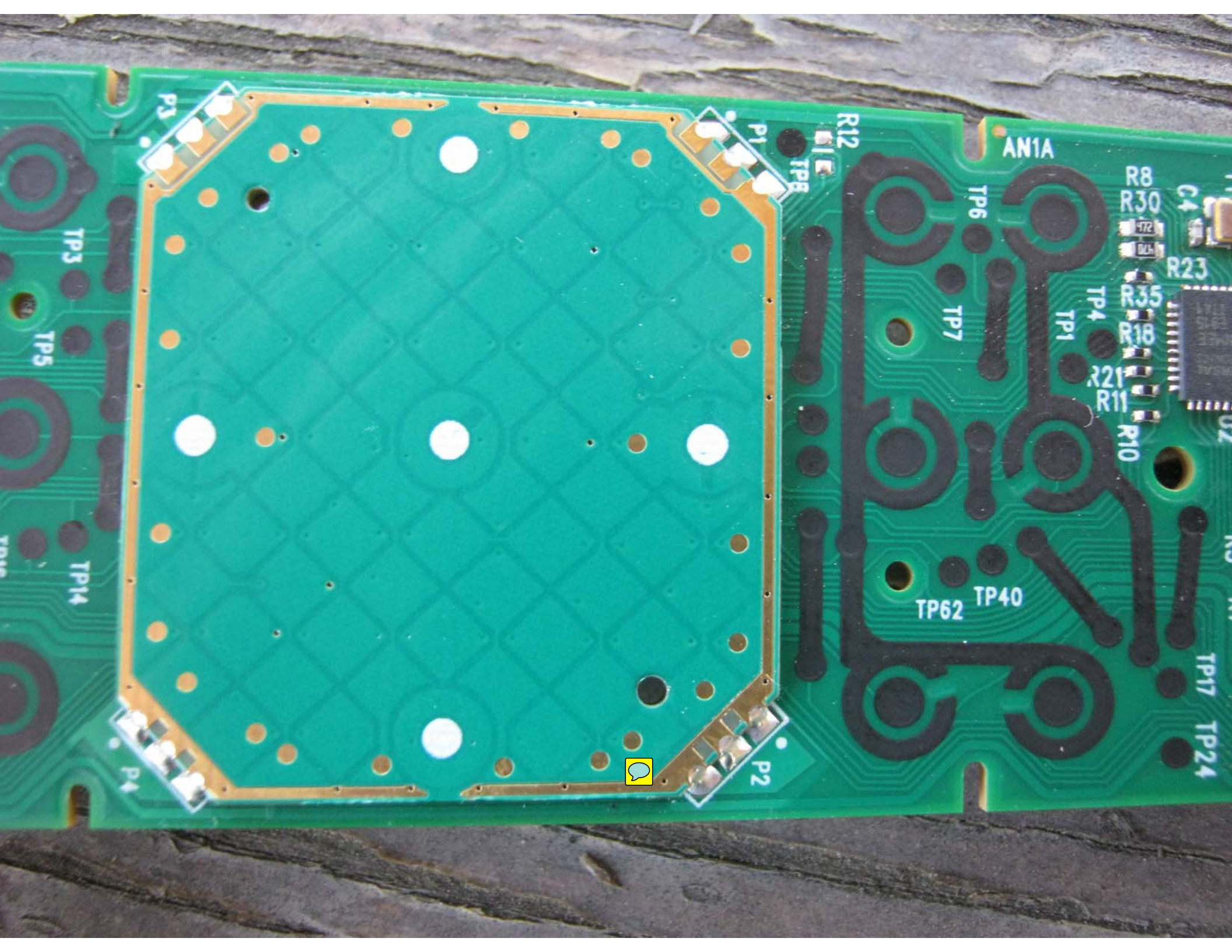
C17

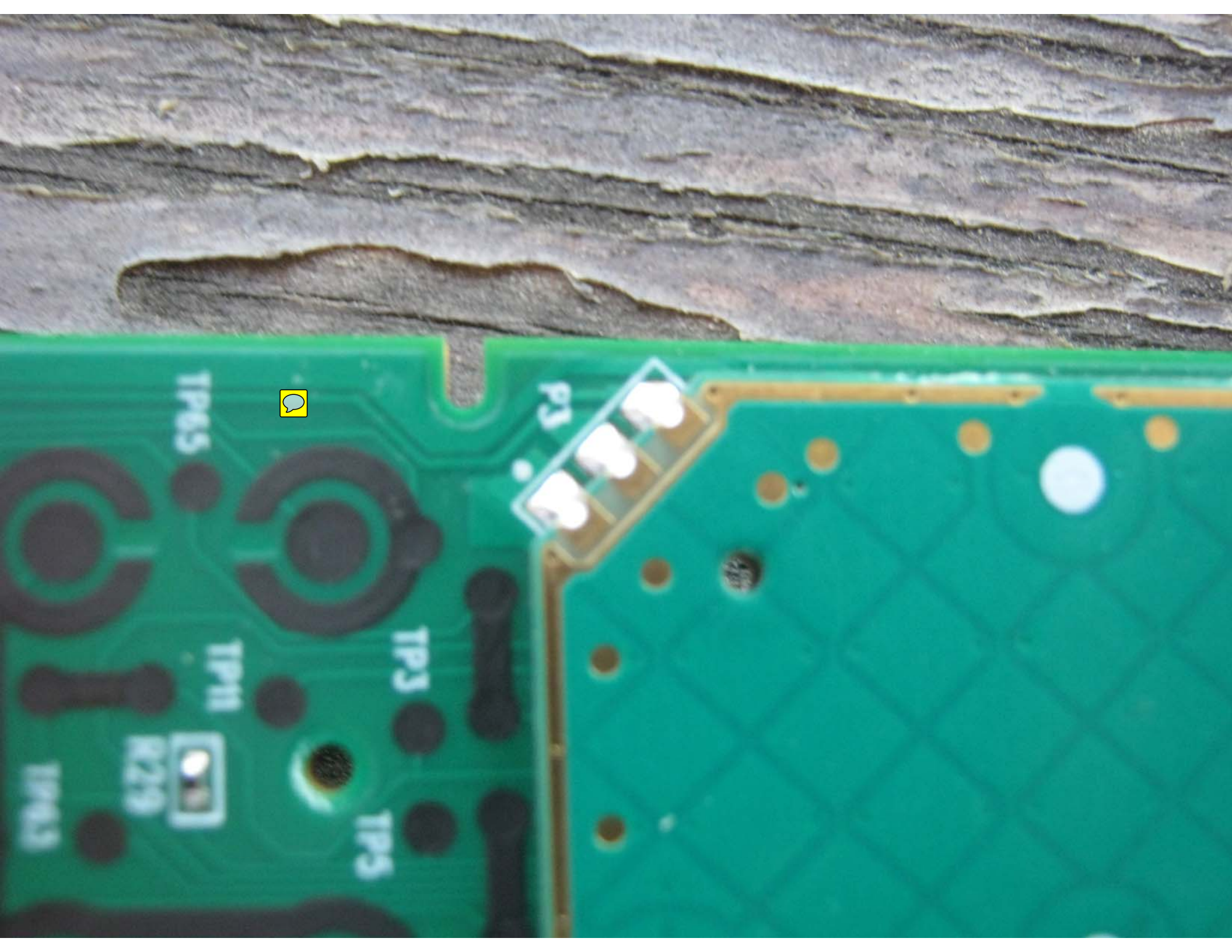
R16

RV1









TP65

P3

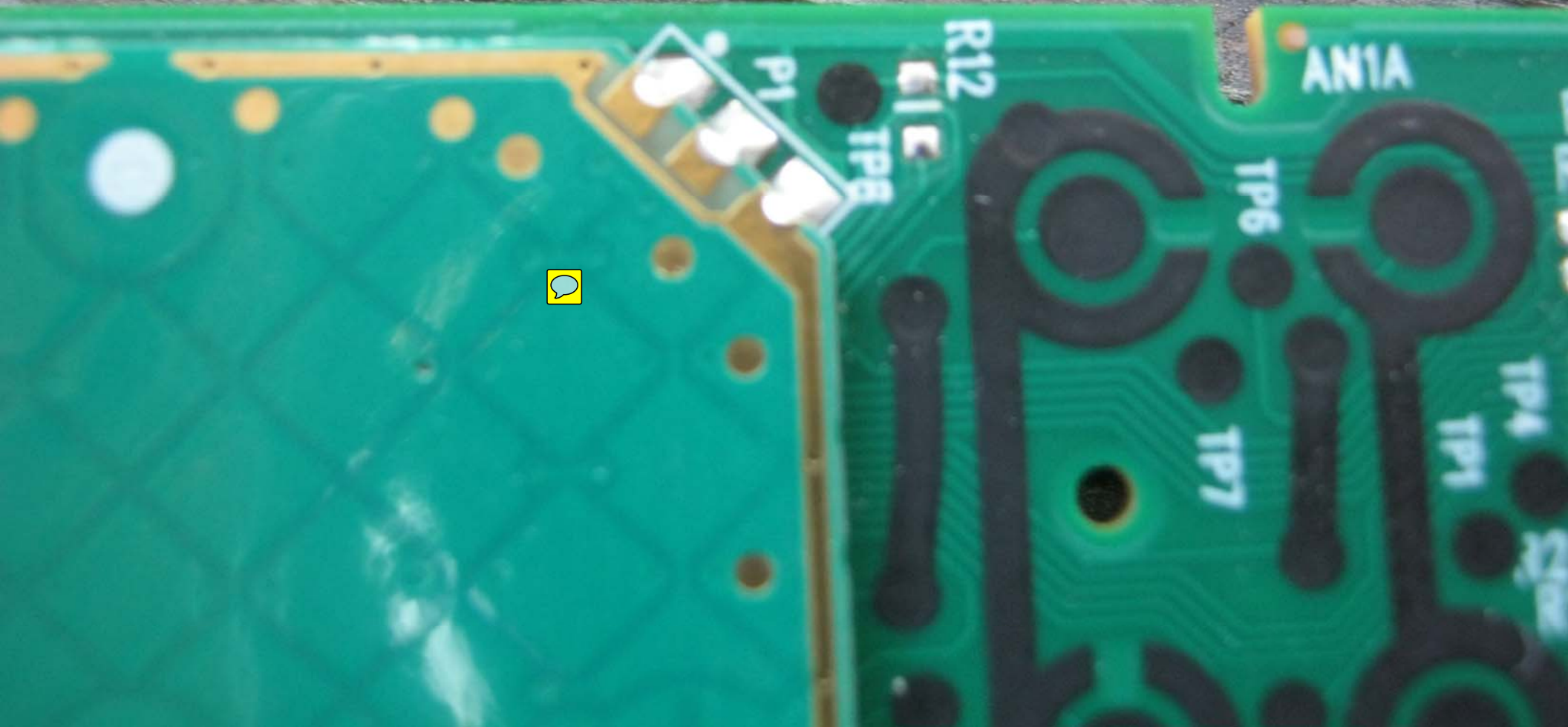
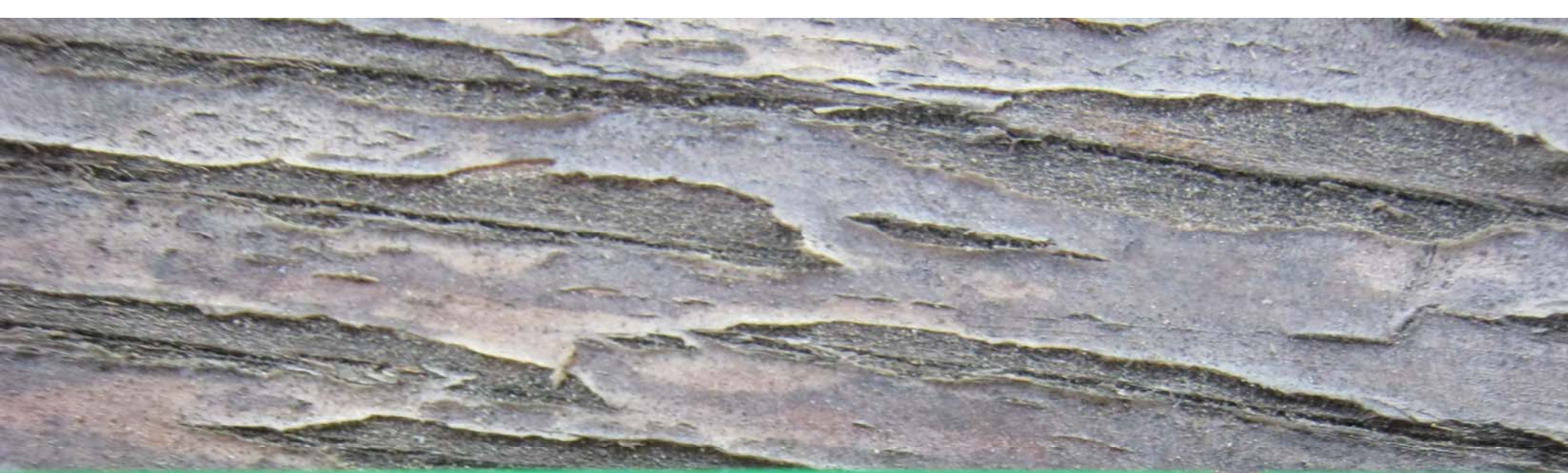
TP41

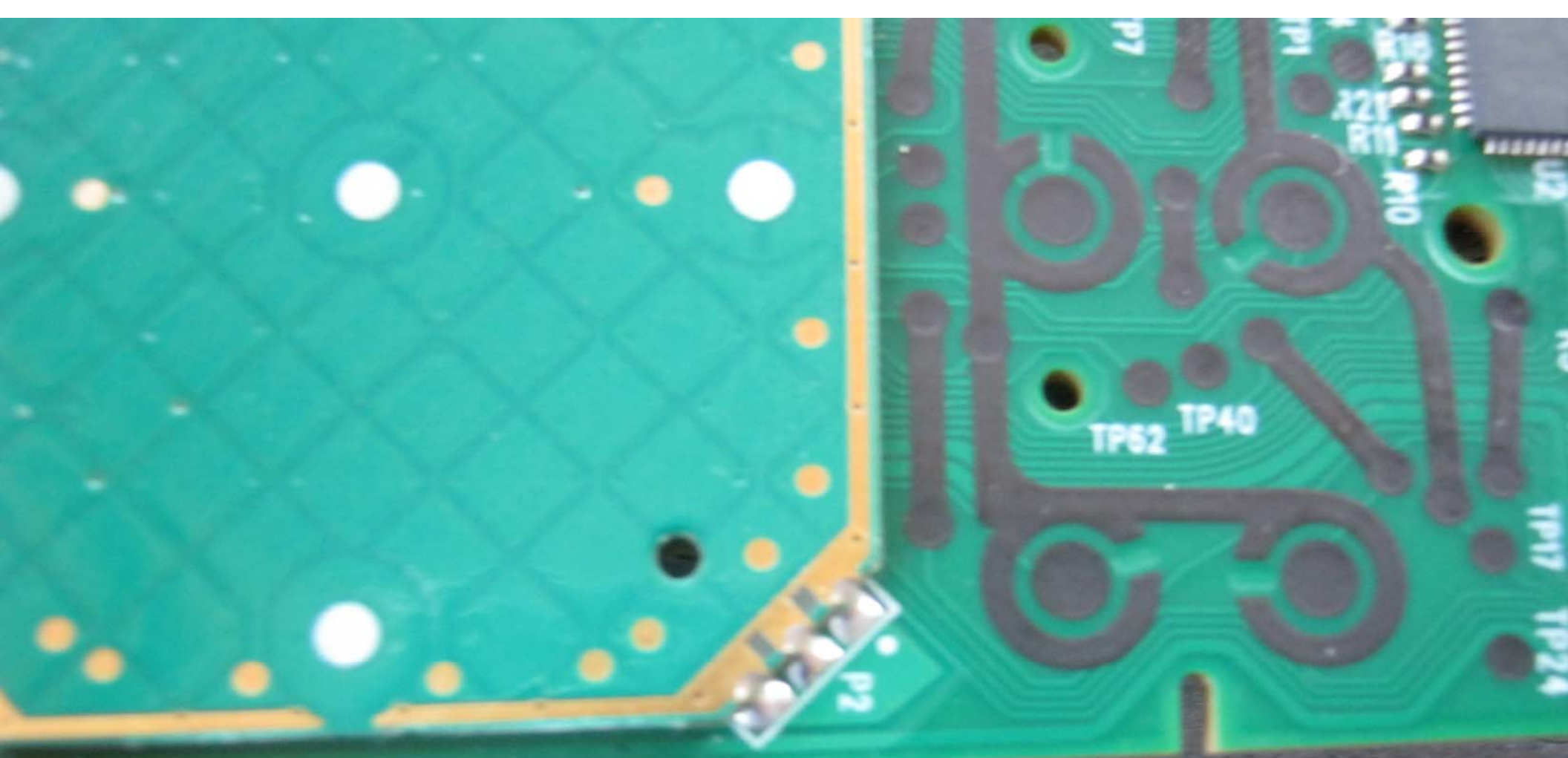
TP3

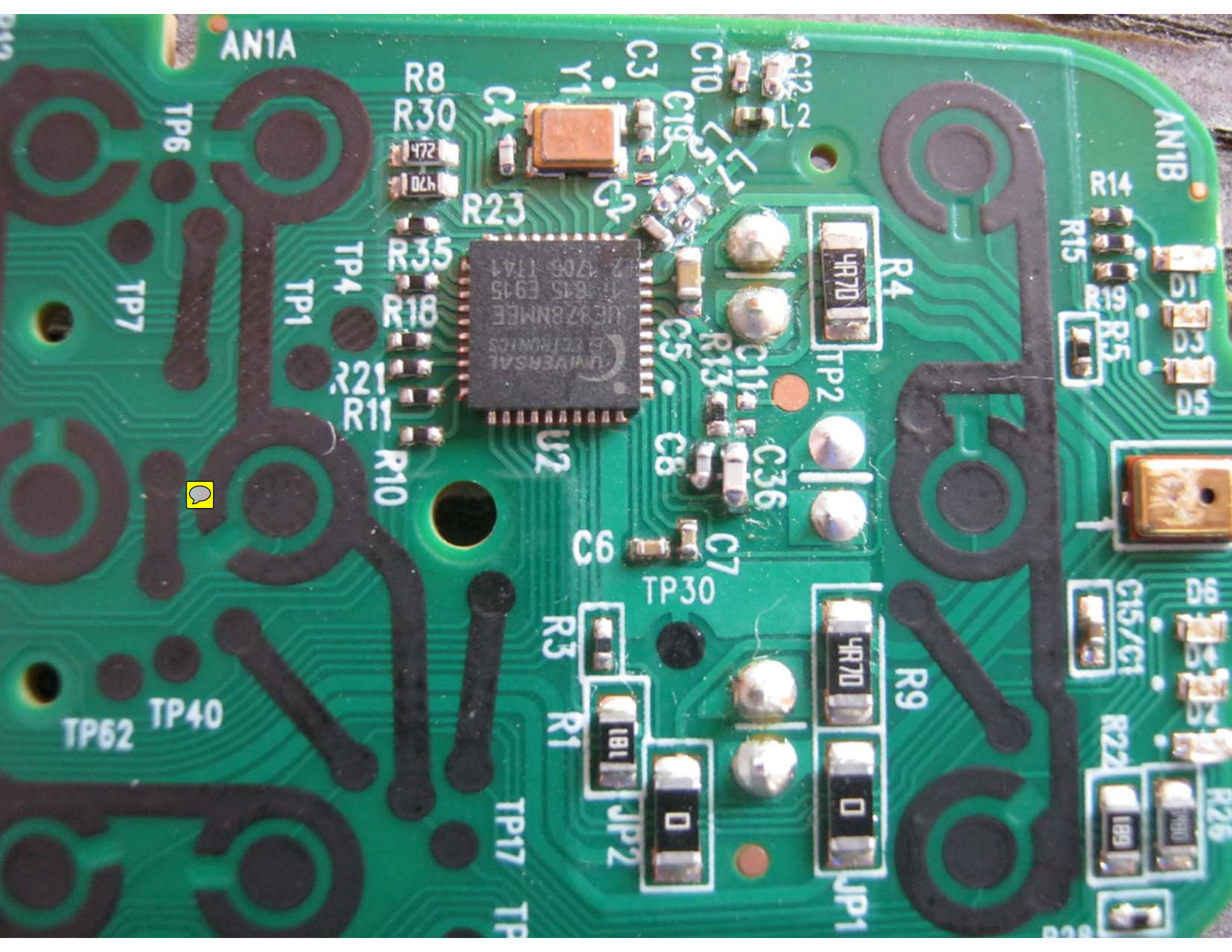
TP5

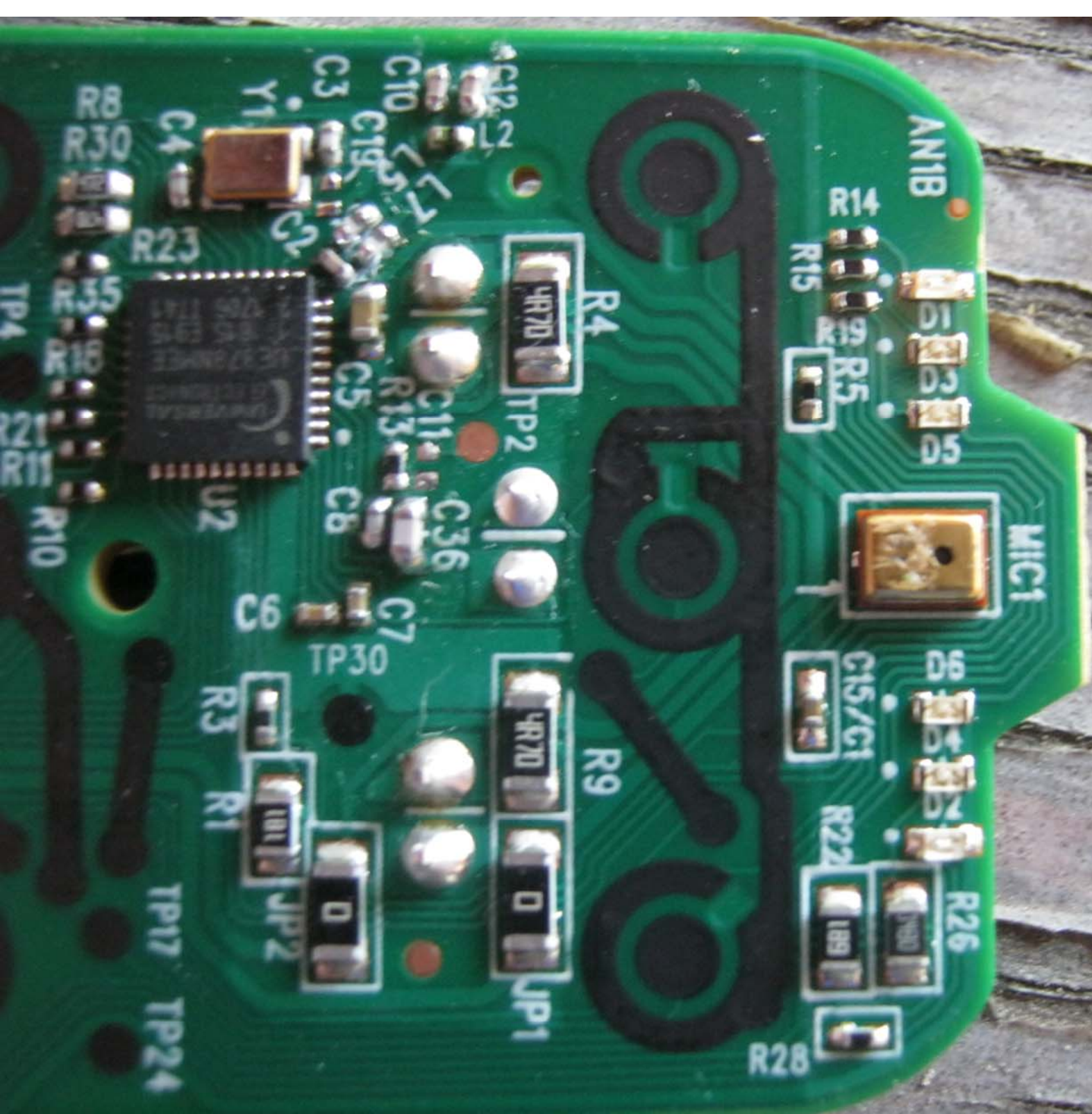
U29

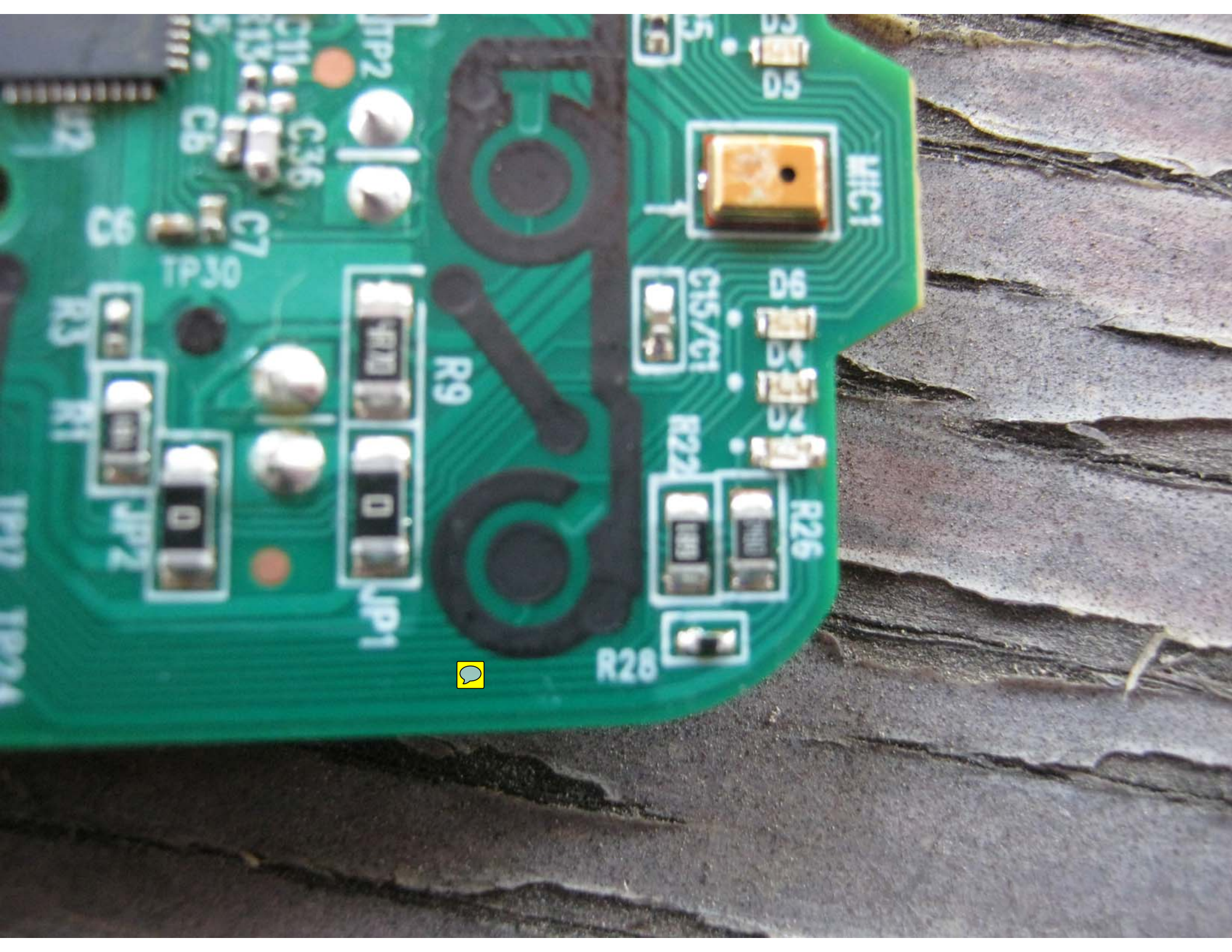
TP63











MIC1

D6

D5

D4

D3

D2

D1

D0

D-1

D-2

D-3

D-4

D-5

D-6

D-7

D-8

C15/C1

R22

R26

R28

R29

R30

R31

R32

R33

R9

R10

R11

R12

R13

R14

R15

R16

R17

R18

R19

R20

R21

R22

R23

R24

R25

R26

R27

R28

R29

R30

R31

R32

R33

R34

R35

R36

R37

R38

R39

R40

R41

R42

R43

R44

R45

R46

R47

R48

R49

R50

R51

R52

R53

R54