

UEI Comcast XR2 RF4CE 2 Device 2013
URC-4268BC1-XXXX-R
60022-4010001 V02
CG LTD.

16114-5507
E319508 ZY-2 94V-0

0413

B4



C18

GND

VBATT

This device complies with part 15 of the FCC rules.
Operation is subject to the following two conditions:
1. This device must not cause harmful interference.
2. This device must accept any interference received, including interference that may cause undesired operation.

FCC ID: M63-4268BC1
JAN 2013 REV:02
Use AA Batteries only





+

D1

-

UEI Comcast XR2 RF4CE 2 Device 2013
URC-4268BC1-XXXX-R
60022-4010001 V02
CG LTD.

 16114-5507

 E319508 ZY-2 94V-0

11113

 B4

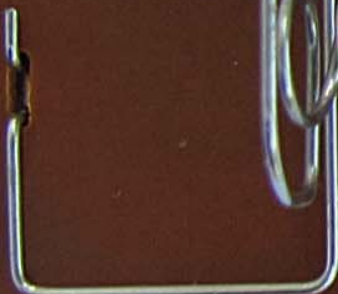


C18

VBATT



GND



FCC ID: M63-4268B1
JAN.2013 REV:02
Use AA Batteries only

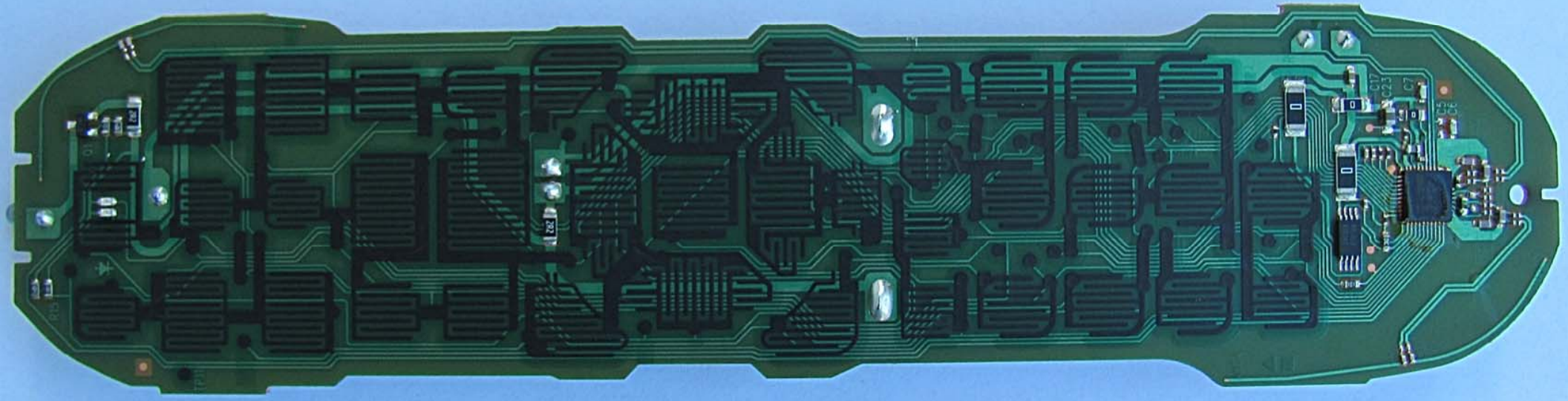


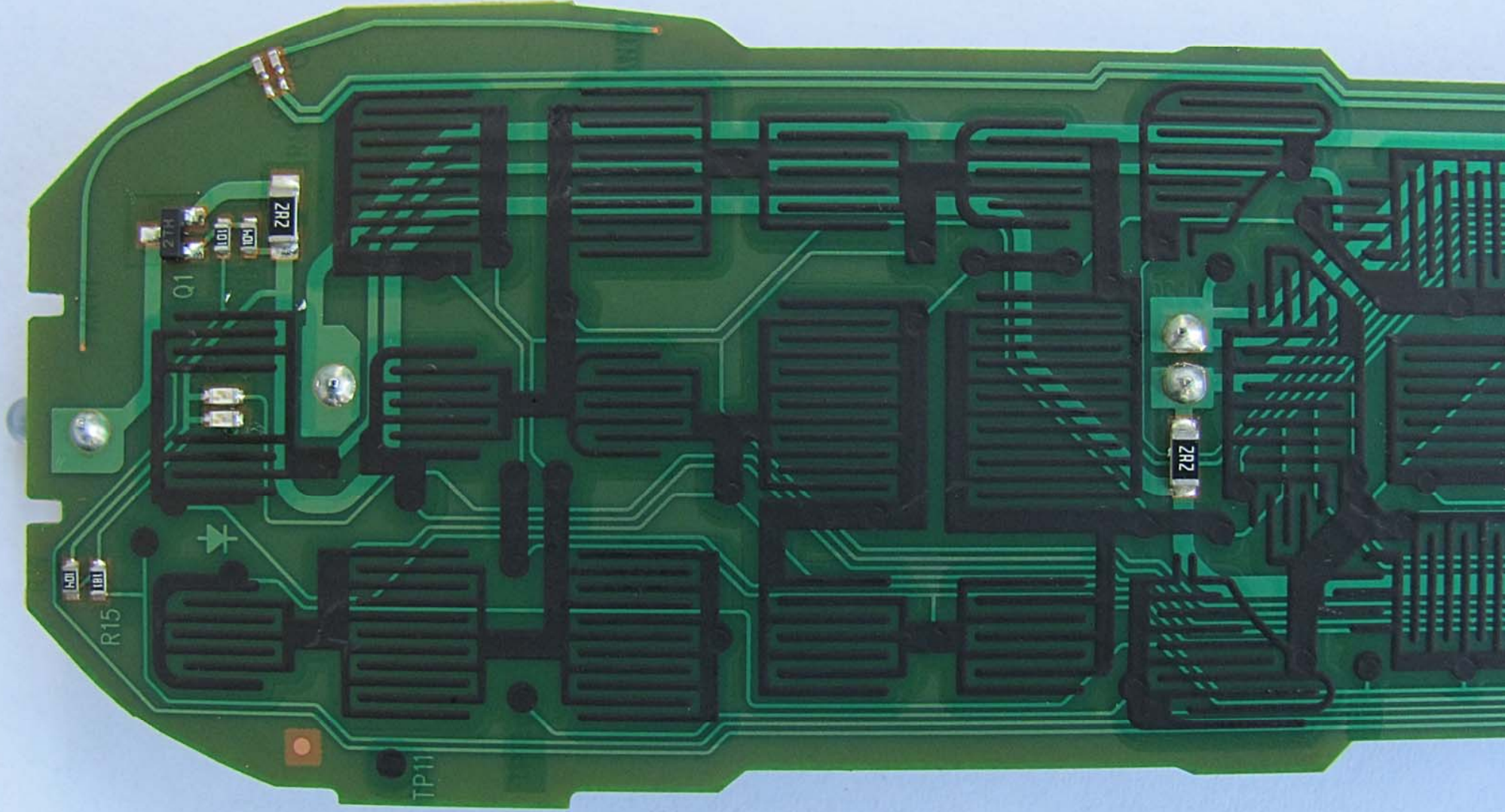
This device complies with part 15 of the FCC rules.
Operation is subject to the following two conditions:
1. This device may not cause harmful interference.
2. This device must accept any interference that may
be received, including interference that may
cause undesired operation.



LX







R15

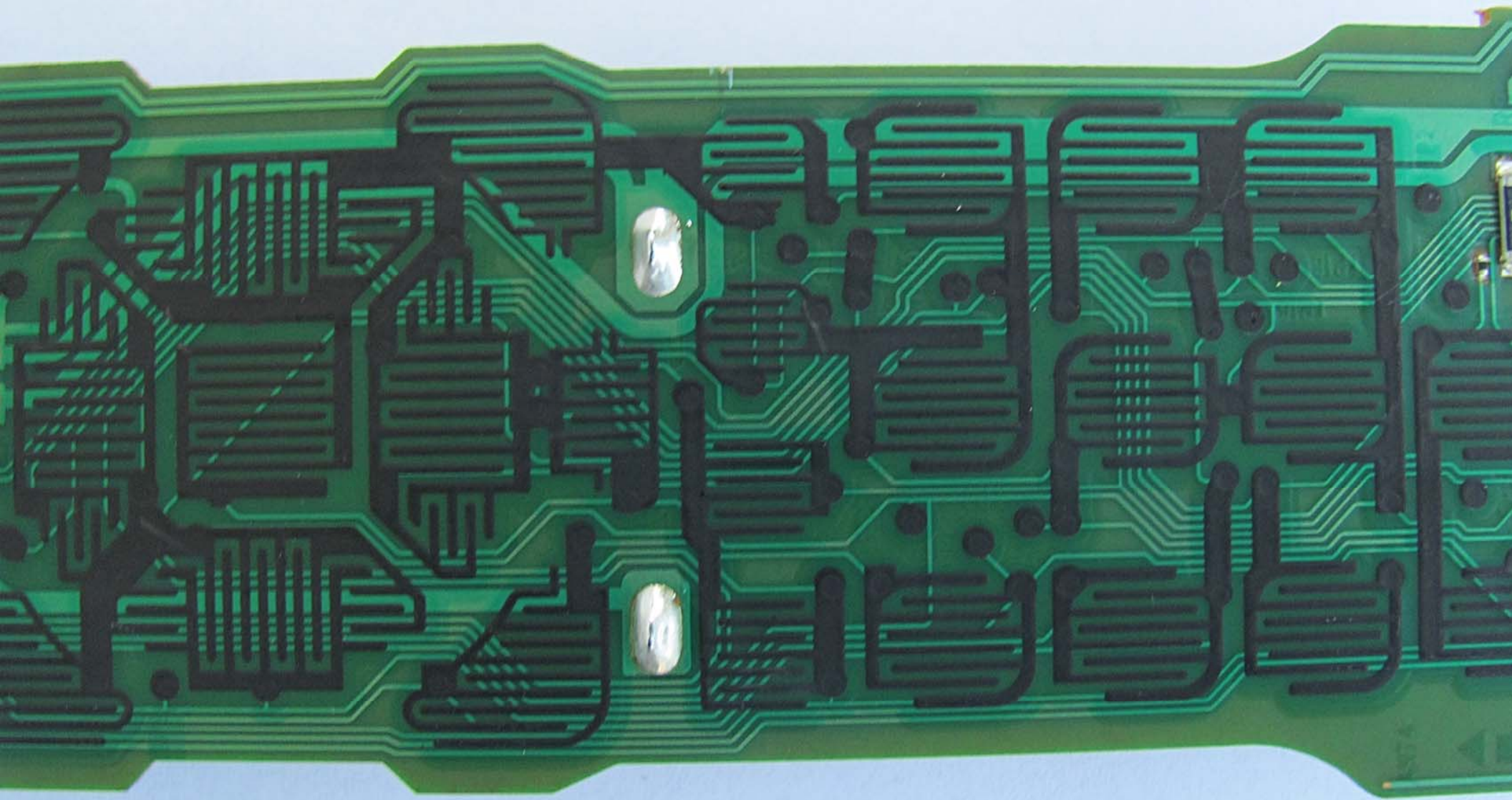
Q1

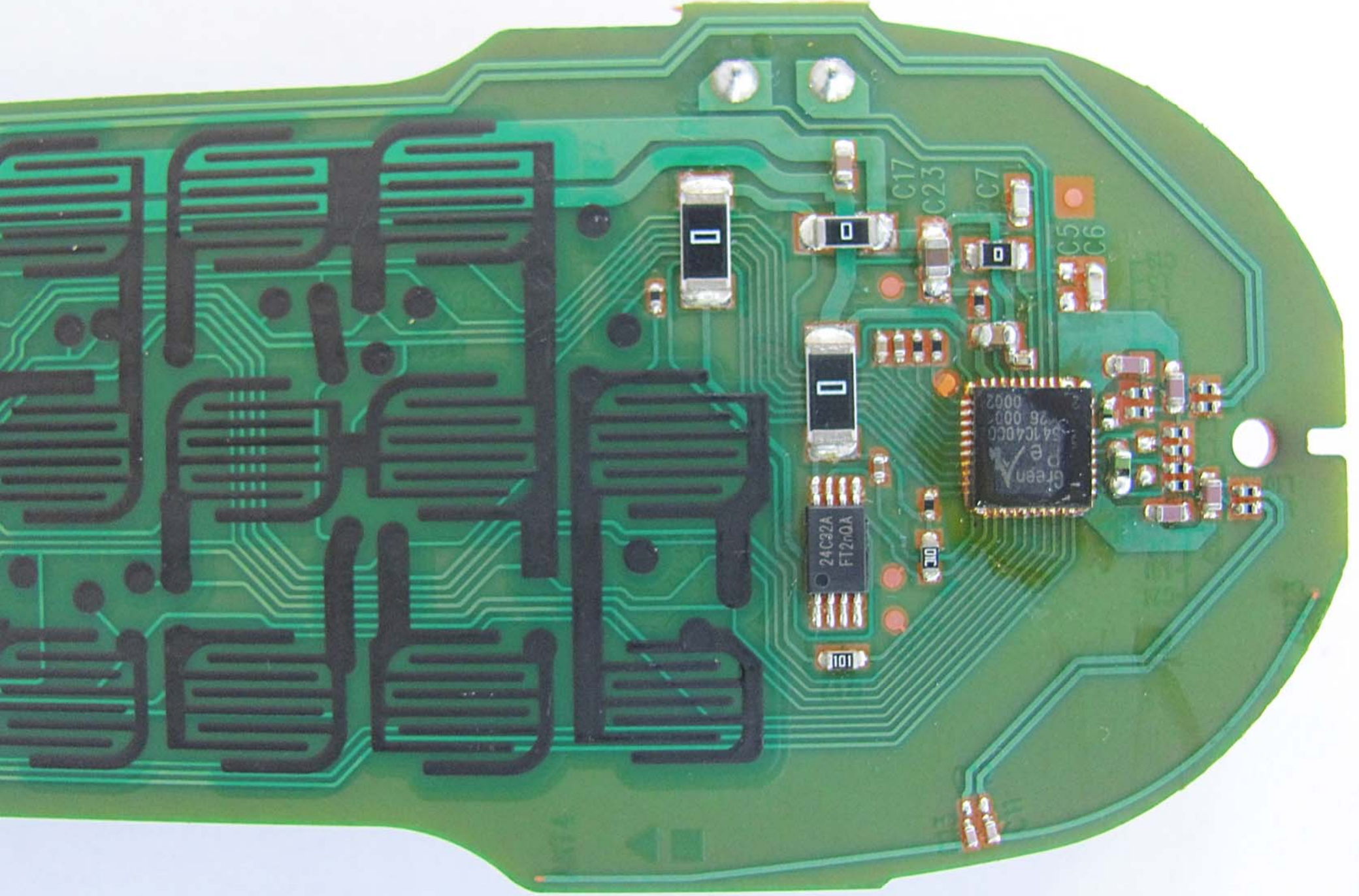
TP11

ZR2

ZR2









CH



Pg



Pg



3
DEF

6
MNO

9
WXYZ



xfinity



OK



Info



2
ABC

5
JKL

8
TUV

0
Space

VOL



Exit

Guide



Last

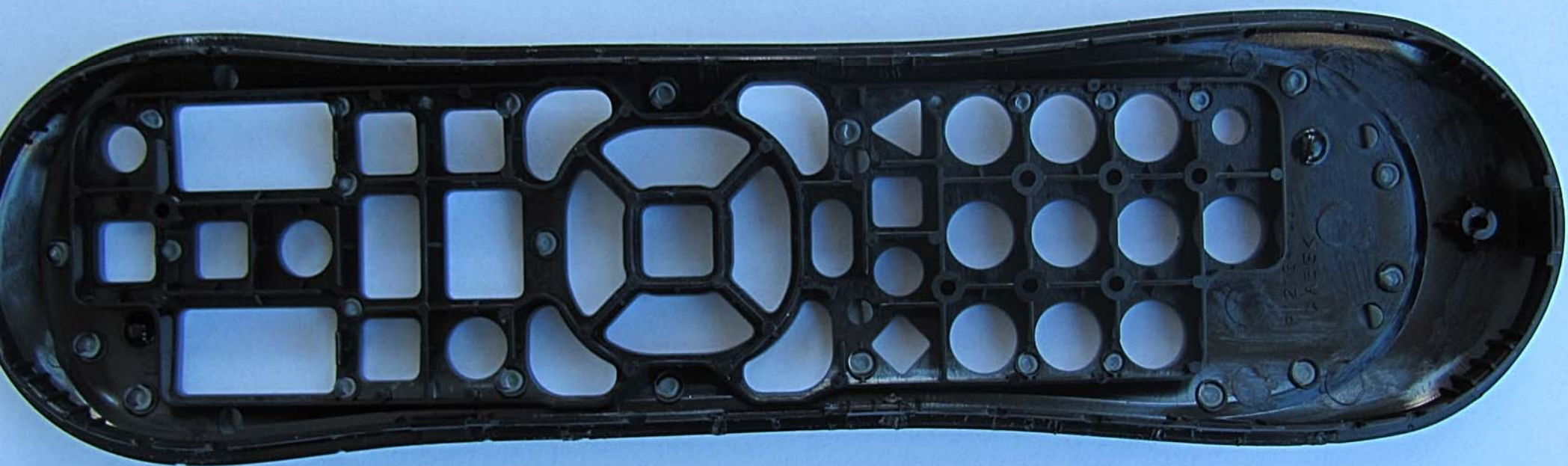


1

4
GHI

7
PQRS

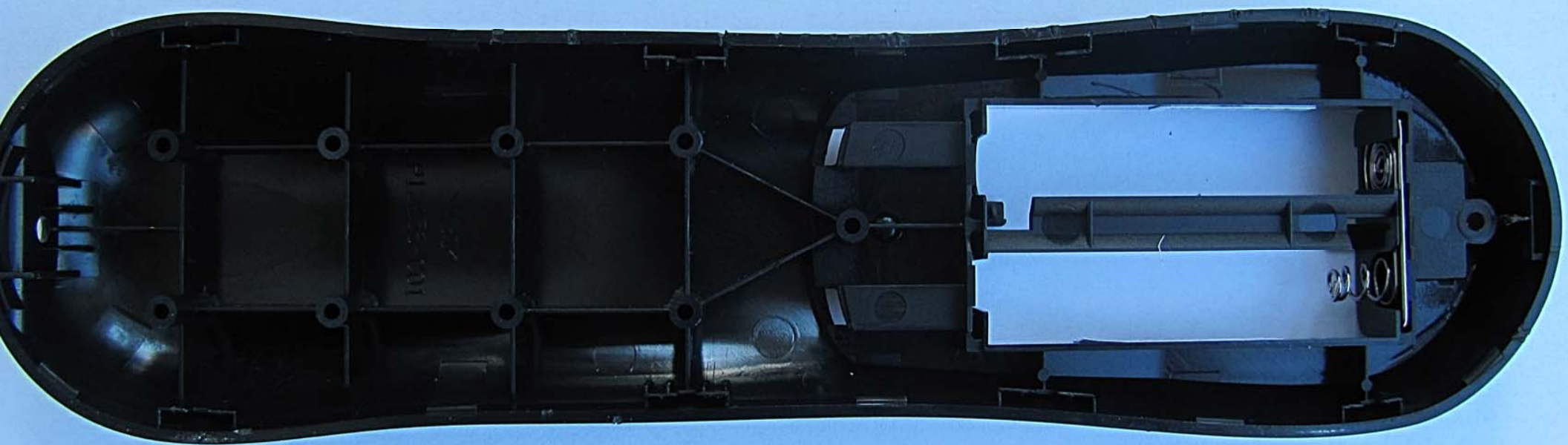






xfinity®

FCC Sample



Evaluation samples -
not for sale
PP Sample
2/5/2013

This remote can be paired with certain Comcast devices. To see if your device support pairing:

1. Press and hold Setup until the LED changes from red to green, and release.
2. Press the XFINITY button, and release.
3. If the Pairing Screen is not displayed, press XFINITY again, up to two more times.

If your device supports pairing, an instruction screen will be displayed. For more information:

www.xfinity.com/remotes

XR2
Version U2

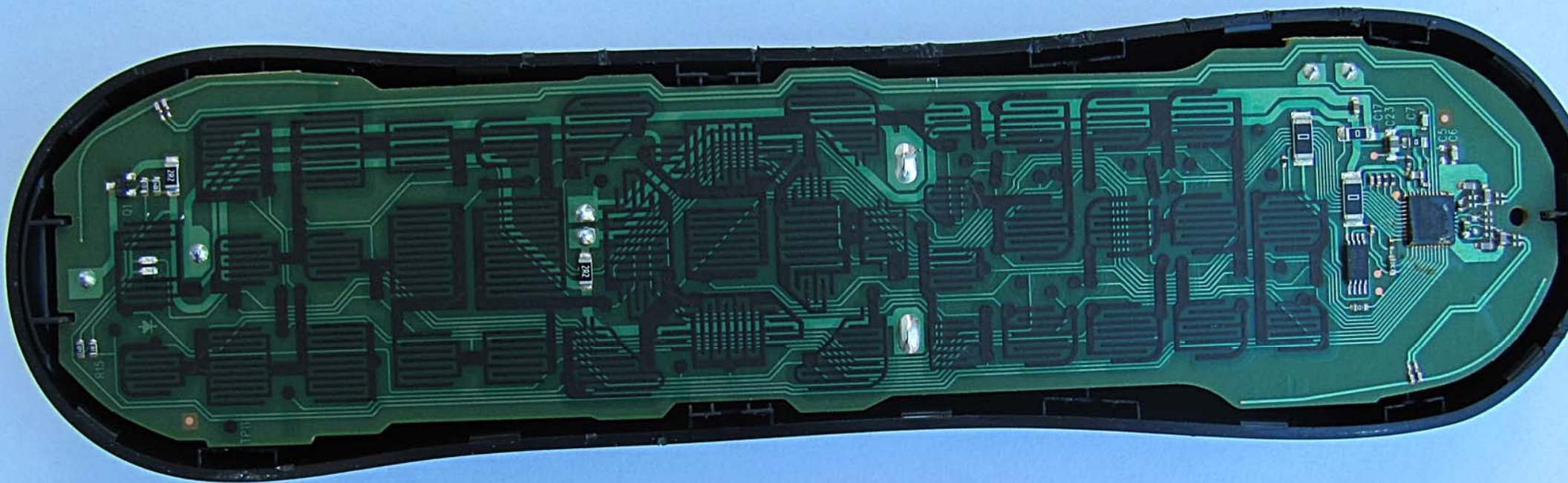






xfinity®

FCC Sample



Evaluation samples -
not for sale
PP Sample
2/5/2013

This remote can be paired with certain Comcast devices. To see if your device support pairing:

1. Press and hold Setup until the LED changes from red to green, and release.
2. Press the XFINITY button, and release.
3. If the Pairing Screen is not displayed, press XFINITY again, up to two more times.

If your device supports pairing, an instruction screen will be displayed. For more information:

www.xfinity.com/remotes

XR2
Version U2

