

DIRECTV RC73-2014
URC-3009BC1-X-R
60022-2223103 V03
JAN.2017 REV.03
CG LTD.

16113-6641
ZY-2 94V-0 E319508

0317

B2

FCC ID: MG3-3009 Use AA Batteries only
This device complies with part 15 of the FCC rules.
Operation is subject to the following two conditions:

- 1. This device may not cause harmful interference.
- 2. This device must accept any interference received, including interference that may cause undesired operation.

VBATT





P16071-C08 >MS<

16113-6641
ZY-2 94V-0 FW E319508

0317

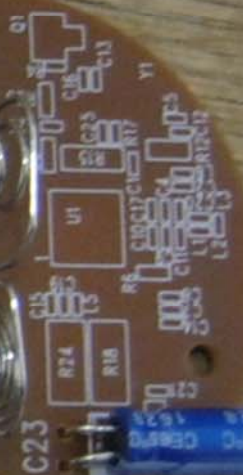
B2

FCC ID: MG3-3009 Use AA Batteries only
+ This device complies with part 15 of the FCC rules
Ⓜ Operation is subject to the following two conditions.

Ⓜ 1. This device may not cause harmful interference.
Ⓜ 2. This device must accept any interference received,
including interference that may cause undesired operation.

CND

VBATT



C22



IR2



K1

C27





IR4

P16071-C08 >ABS<

DIRECTV RC73 2014
URC-3009BC1-X-R
60022-2223103 V03
JAN.2017 REV:03
CG LTD.



 16113-6641
ZY--2 94V-0  E319508

0317

GND

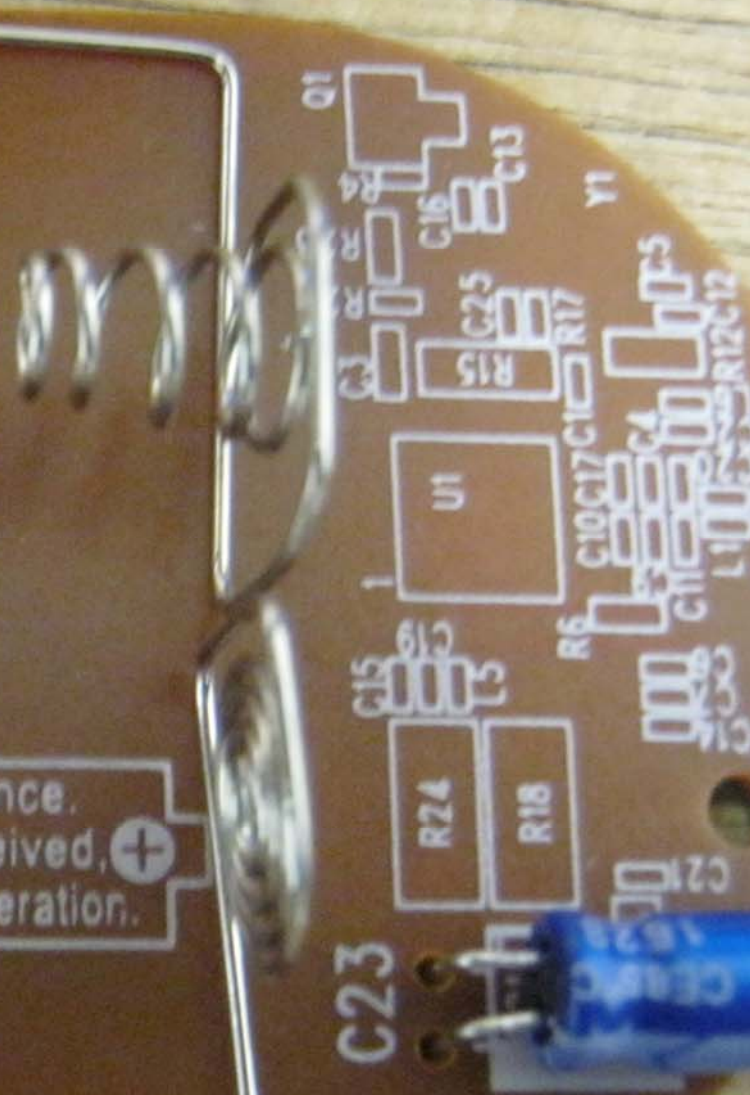
FCC ID: MG3-3009

Use AA Batteries only

⊕ This device complies with part 15 of the FCC rules. Ⓡ
Operation is subject to the following two conditions:

1. This device may not cause harmful interference.
- Ⓡ 2. This device must accept any interference received, ⊕ including interference that may cause undesired operation.

VBATT



GND

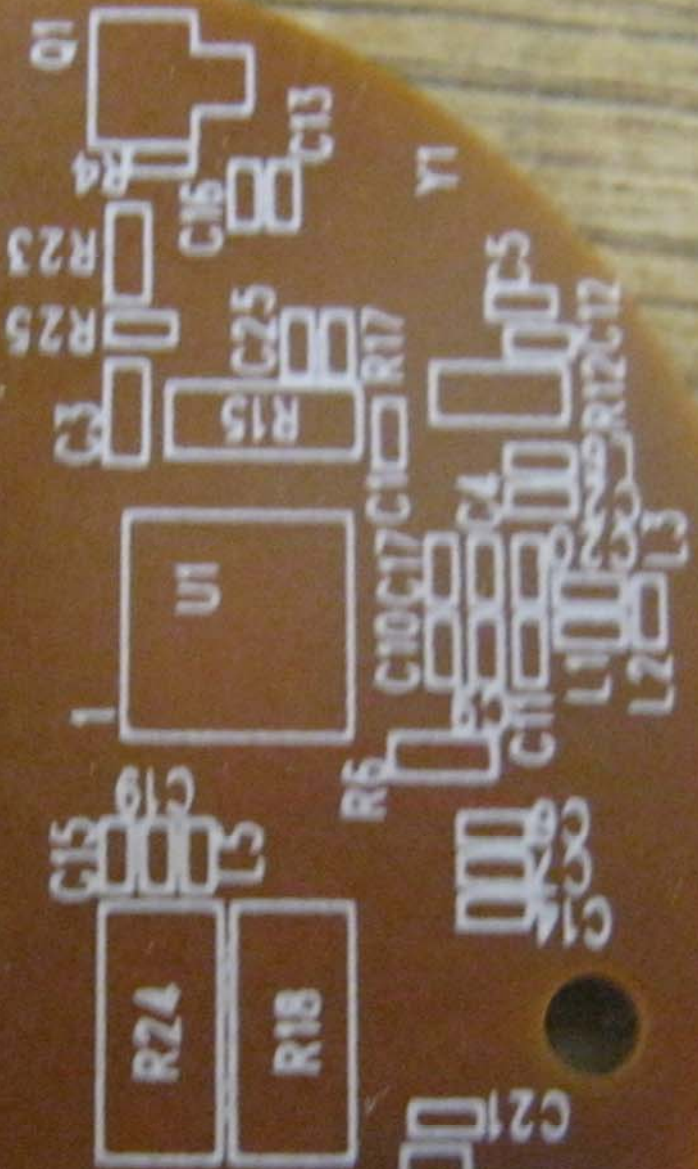
series only
CC rules.
conditions:

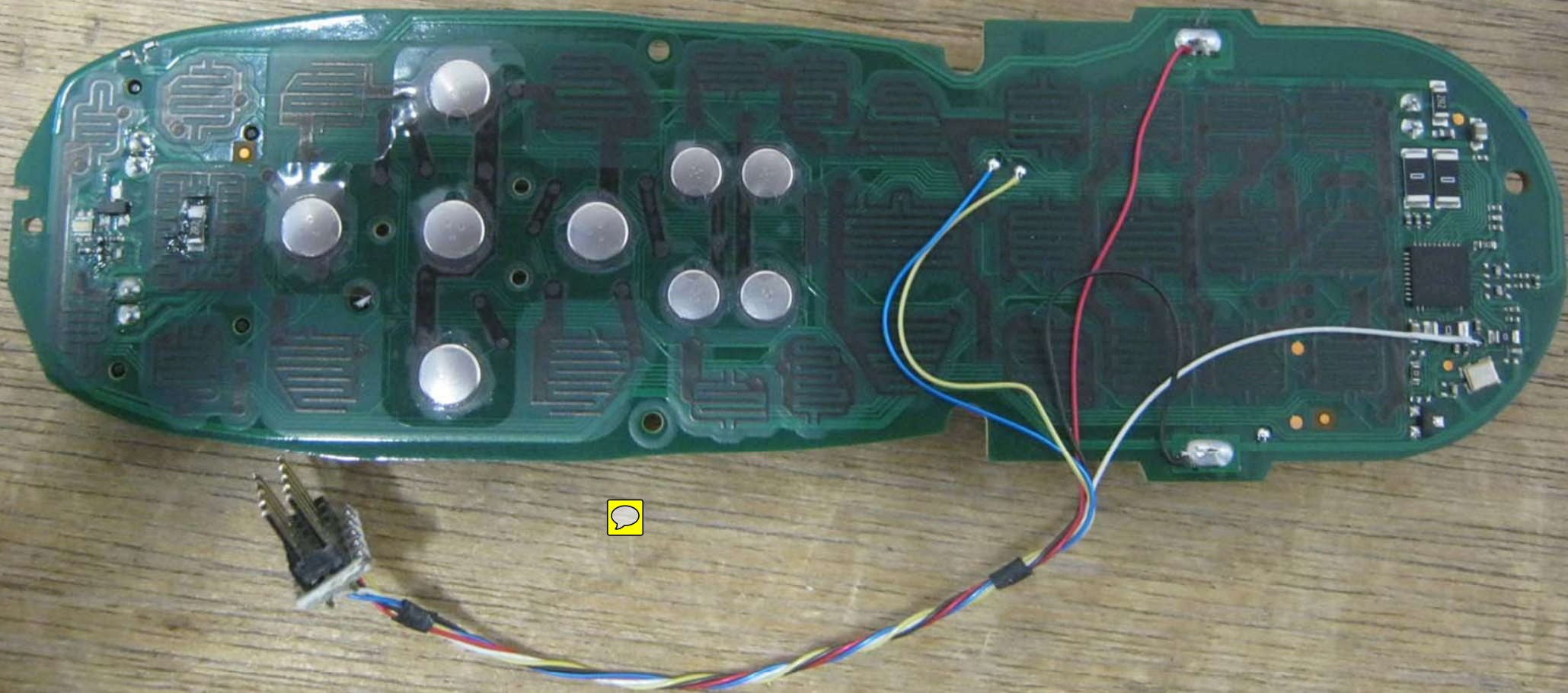
armful interference.
interference received,
se undesired operation.

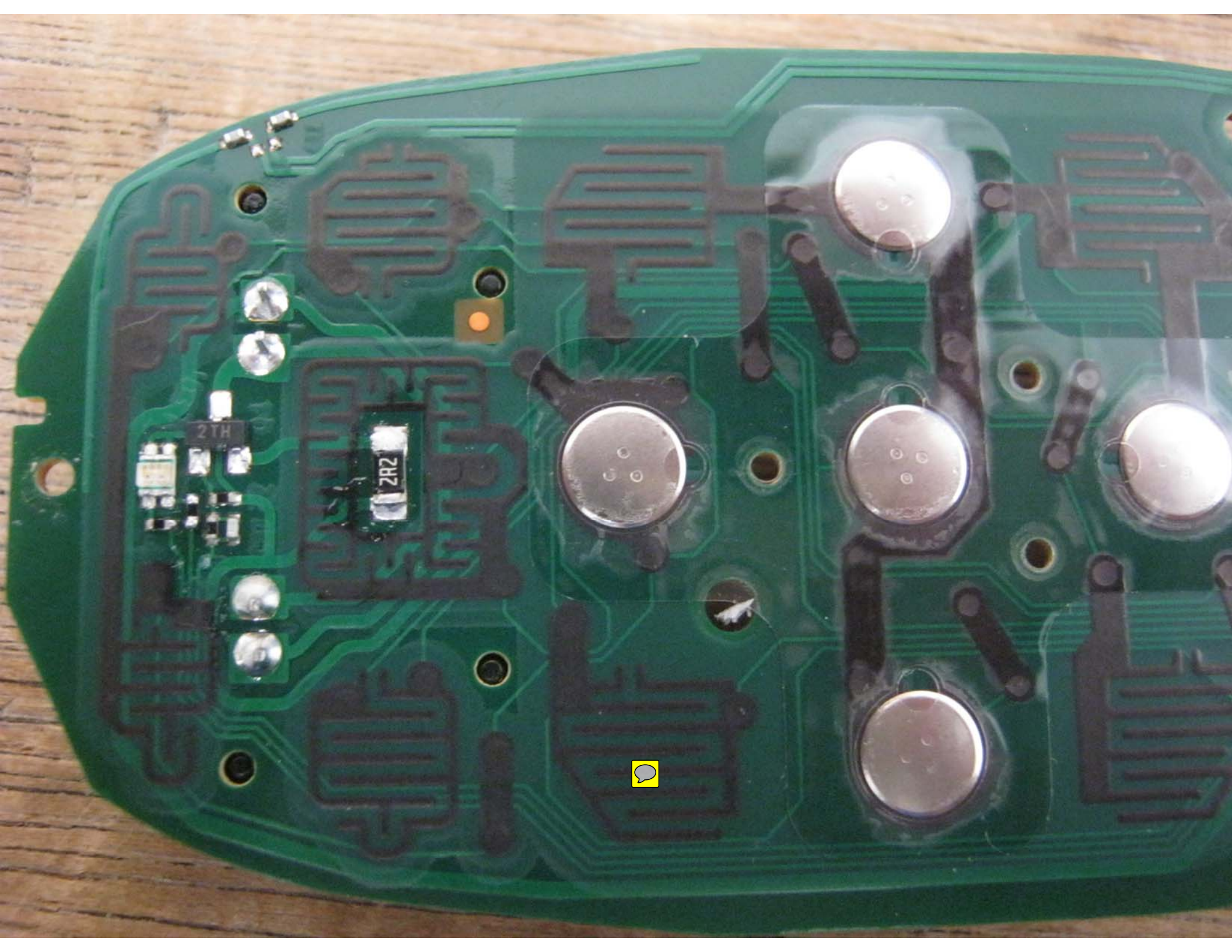
VBATT



C23



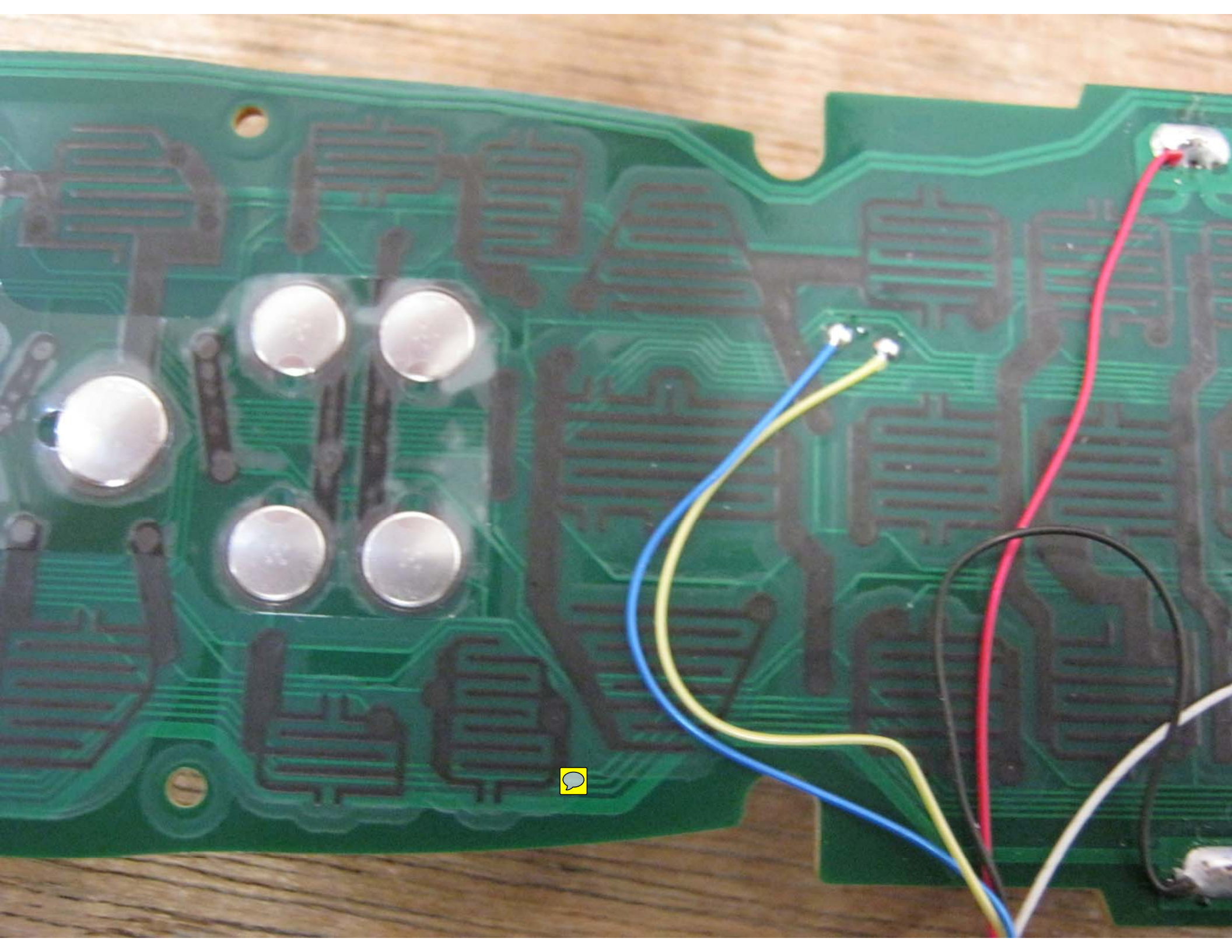


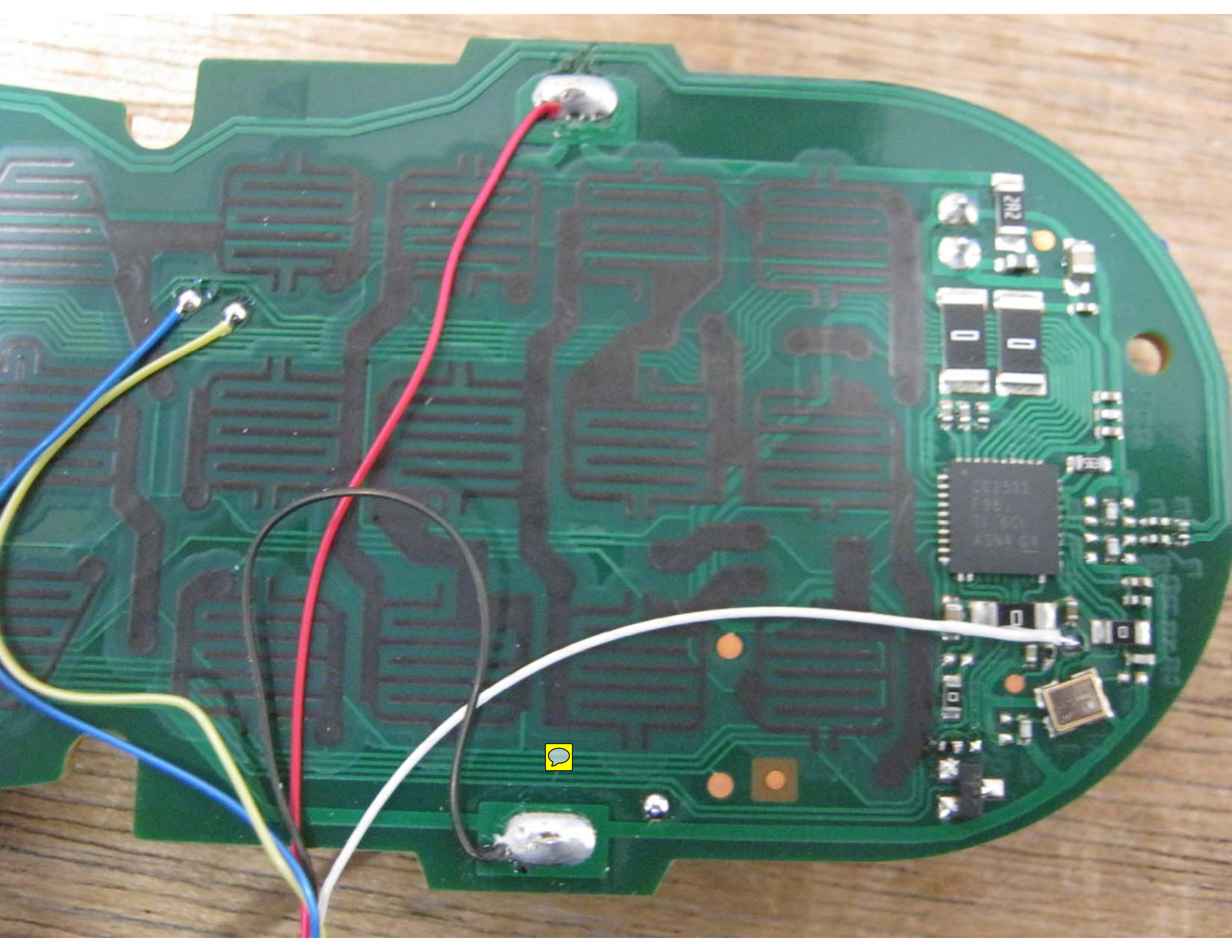


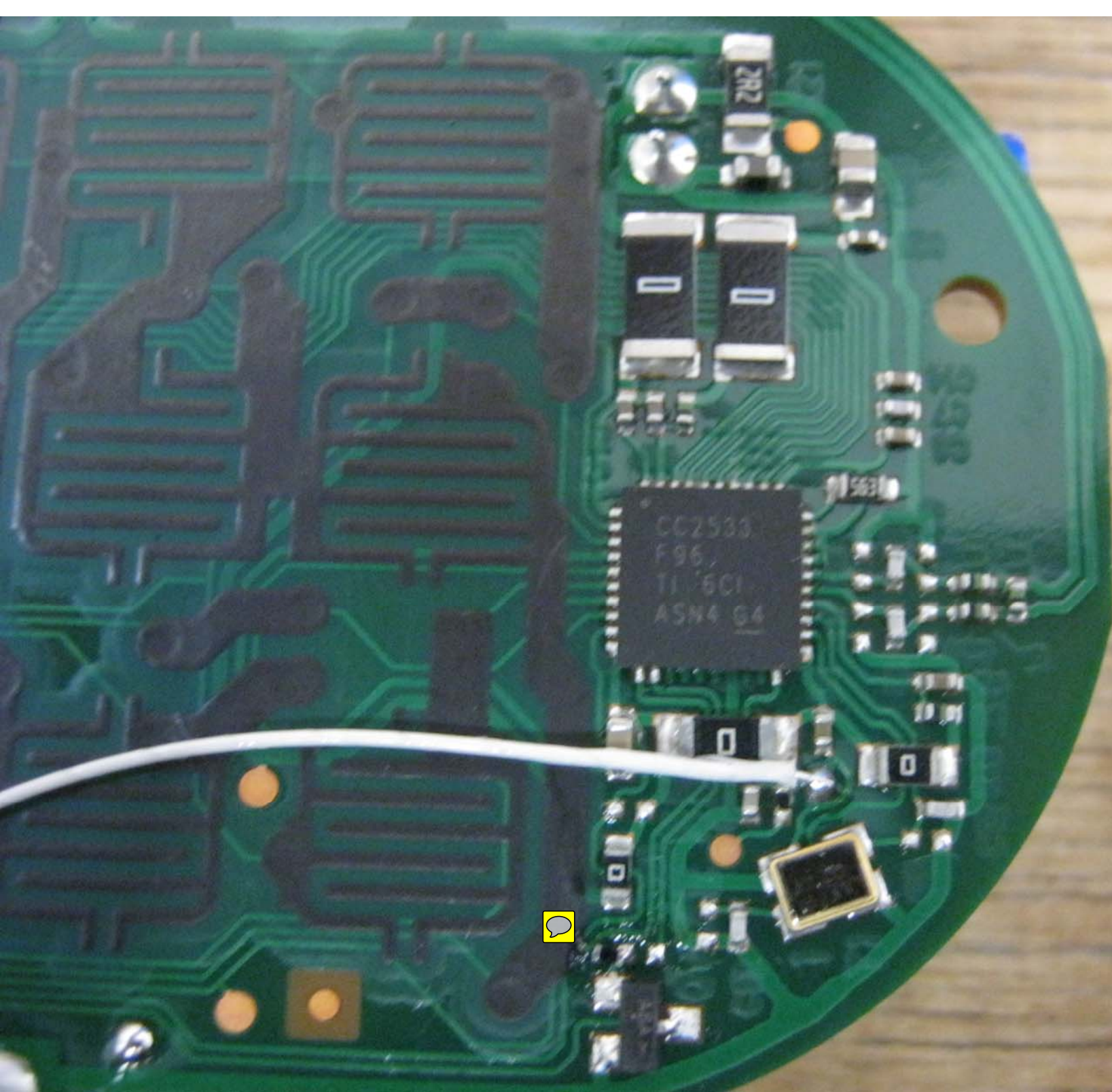
2TH

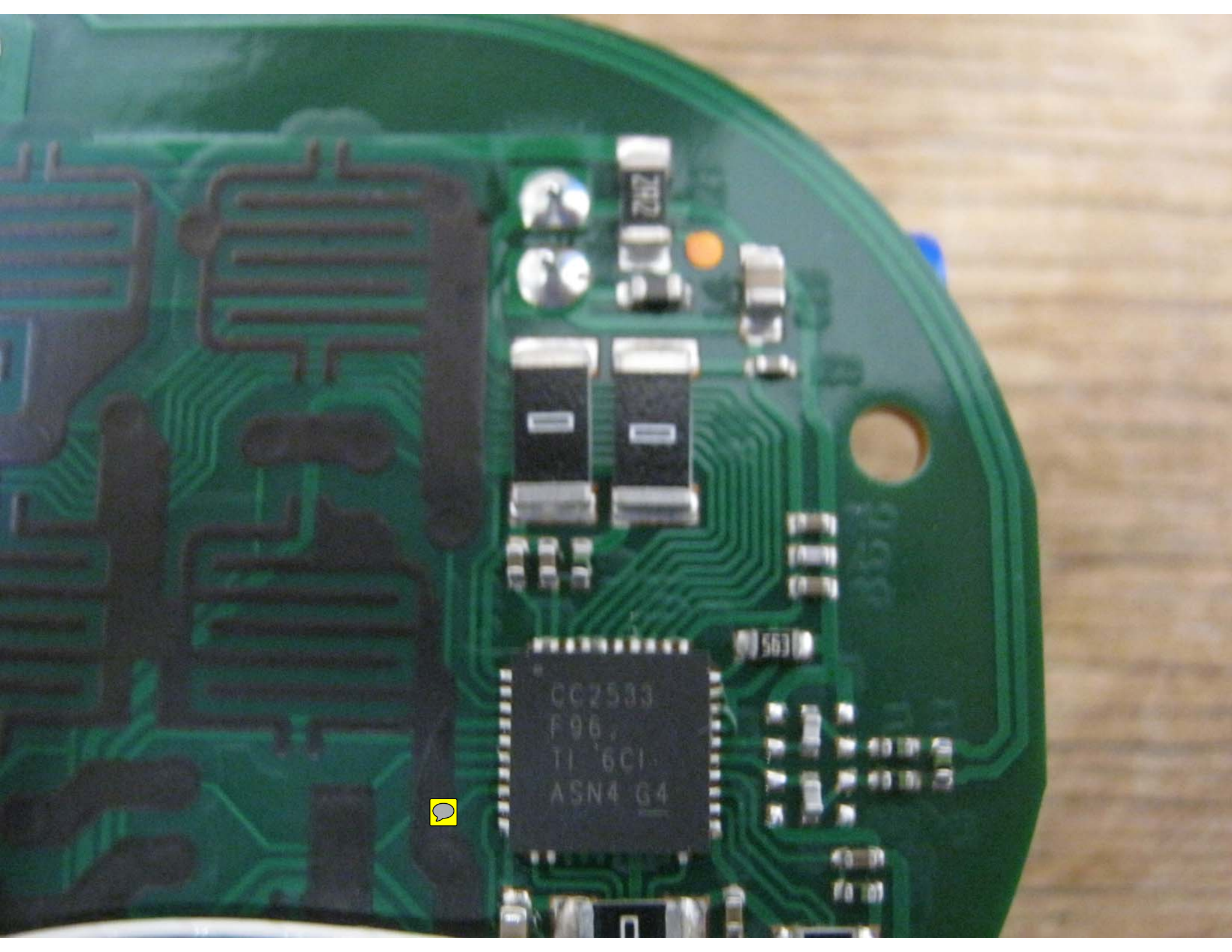
ZR2









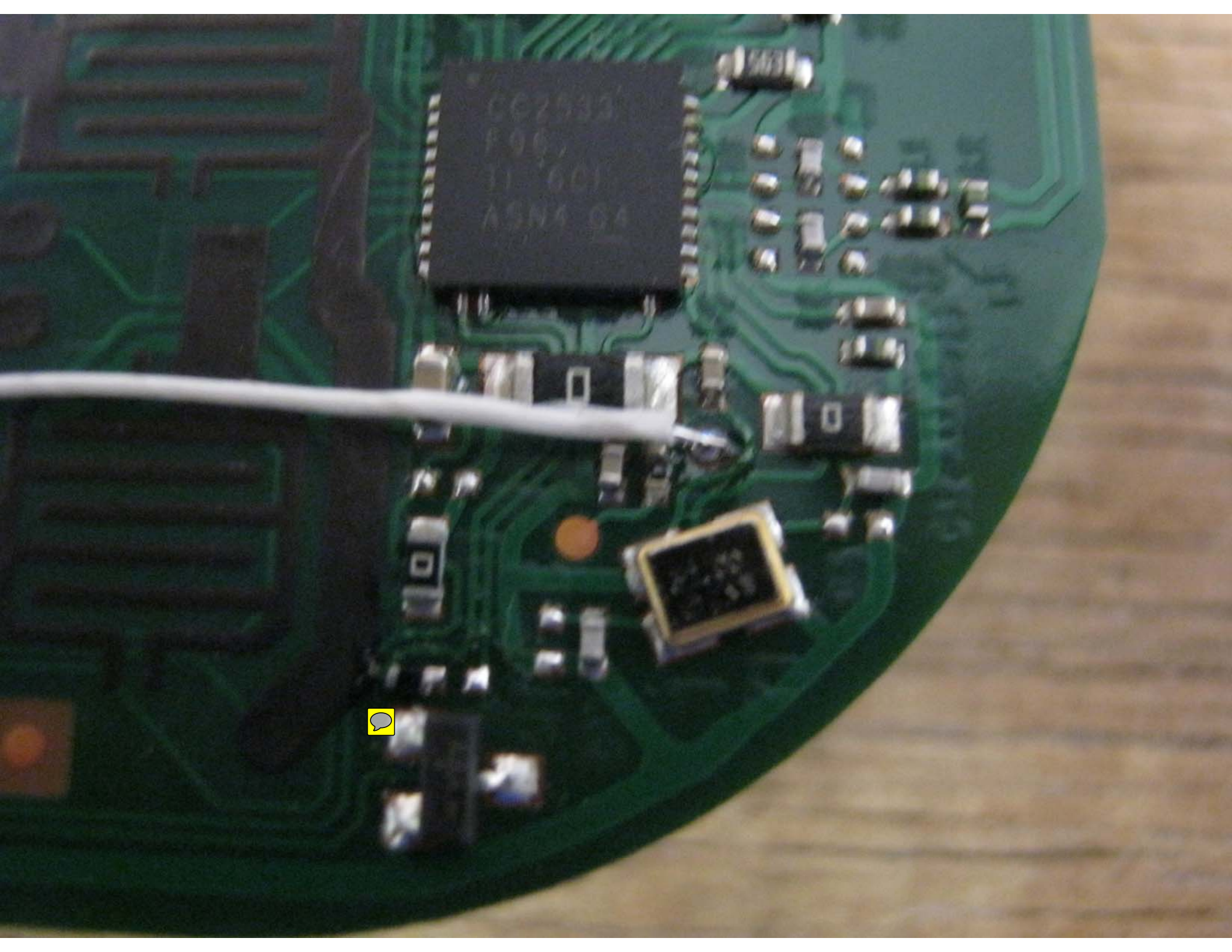


2.62k

563

CC2533
F96
TI '6CI
ASN4 G4





CC2533
F06
TI 601
ASN4 GA

