

D18

D19

D20

R14

R17

R18

R12

R15

R16

R19

R20

R21

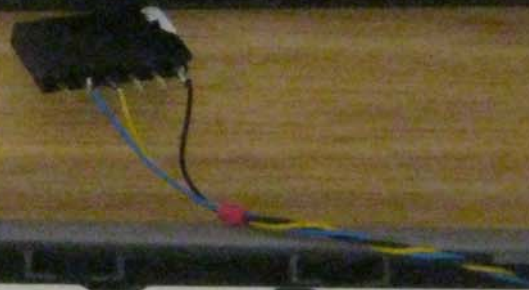
R22

Q2

R19

C16 R21

R22





FC ID: MG3-2135 IC: 2575A-2135 Use AA Batteries only  
This device complies with part 15 of the FCC rules.  
Operation is subject to the following two conditions:

- 1. This device may not cause harmful interference.
- 2. This device must accept any interference received, including interference that may cause undesired operation.

60162-4185000 V00  
URC-2135B/C0-R  
JUN 2016 REV-00

26221-6484  
E319508  
Zy-2 94V-0

WOW

C15

TP41

TP42

TP6

TP4

D2

D2+

TP3

TP3

TP3

TP3

TP3

TP3

TP3

TP3

TP3

TP3

TP3

TP3

TP3

TP3

TP3

TP3

TP3

TP3

TP3

TP3

TP3

TP3

TP3

TP3

TP3

TP3

TP3

TP3

TP3

TP3

TP3

TP3

TP3

TP3

TP3

TP3

TP3

TP3

TP3

TP3

TP3

TP3

TP3

B1

B1

B2

B2

B3

B3

B4

B4

B5

B5

B6

B6

B7

B7

B8

B8

B9

B9

B10

B10

B11

B11

B12

B12

B13

B13

B14

B14

B15

B15

B16

B16

B17

B17

B18

B18

B19

B19

B20

B20

B21

B21

B22

B22

B23

B23

B24

B24

B25

B25

TP1

TP1

TP1

TP1

TP1

TP1

TP1

TP1

TP1

TP1

TP1

TP1

TP1

TP1

TP1

TP1

TP1

TP1

TP1

TP1

TP1

TP1

TP1

TP1

TP1

TP1

TP1

TP1

TP1

TP1

TP1

TP1

TP1

TP1

TP1

TP1

TP1

TP1

TP1

TP1

TP1

TP1

TP1

TP1

TP1

TP1

TP32

TP31

TP30

TP29

TP28

TP27

TP26

TP25

TP24

TP23

TP22

TP21

TP20

TP19

TP18

TP17

TP16

TP15

TP14

TP13

TP12

TP11

TP10

TP9

TP8

TP7

TP6

TP5

TP4

TP3

TP2

TP1

TP0

TP0

TP0

TP0

TP0

TP0

TP0

TP0

TP0

TP0

TP0

TP0

TP0

TP0

TP0

TP0

TP0

TP0

TP0

TP0

TP0

TP0

TP0

TP0

TP0

TP0

TP0

TP0

TP0

TP0

TP0

TP0

TP0

TP0

TP0

TP0

TP0

TP0

TP0

TP33

TP34

TP35

TP36

TP37

TP38

TP39

TP40

TP41

TP42

TP43

TP44

TP45

TP46

TP47

TP48

TP49

TP50

TP51

TP52

TP53

TP54

TP55

TP56

TP57

TP58

TP59

TP60

TP61

TP62

TP63

TP64

TP65

TP66

TP67

TP68

TP69

TP70

TP71

TP72

TP73

TP74

TP75

TP76

TP77

TP78

TP79

TP80

TP81

TP82

TP83

TP84

TP85

TP86

TP87

TP88

TP89

TP90

TP91

TP92

TP93

TP94

TP95

TP96

TP97

TP98

TP99

TP100

TP101

TP102

TP103

TP104

TP105

TP106

TP107

TP108

TP109

TP110

TP111

TP112

TP113

TP114

TP115

TP116

TP117

TP118

TP119

TP120

TP121

TP122

TP123

TP124

TP125

TP126

TP127

TP128

TP129

TP130

TP131

TP132

TP133

TP134

TP135

TP136

TP137

TP138

TP139

TP140

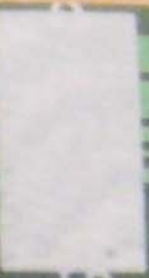
TP141

TP142

TP143



1. This device  
2. This device  
including int



60162-4185000 V00  
Experience RF4CE Remote 2016

URC-2135BC0-R  
JUN. 2016 REV:00



TP42

TP5

C14

C15

TP41

J3

TP6

TP4

FC ID: MG3-2135 IC: 2575A-2135 Use AA Batteries only



This device complies with part 15 of the FCC rules.  
Operation is subject to the following two conditions:



1. This device may not cause harmful interference.
2. This device must accept any interference received, including interference that may cause undesired operation.



60162-4185000 V00

BT3

B

TP15  
TP14  
TP39  
TP8  
TP40  
TP12  
TP13

Zy-2 94V-0

(A2)

R23  
R26  
C17

TP38

TP33

R1

0\*

R3  
1D6

TP24

C2

C6

Y1/Y2

C4

C3

C7

C11

C12

C13

C5

C1

C2

C10

L1

L2

L3

L4

L5

U1

TP17

C11

TP43

L1

L2

L3

L4

L5

TP18

JP1

TP16

TP11

TP2

TP19

TP18

TP9

TP7  
TP10

TP40

TP12

TP13

TP15

TP14

TP21

TP39

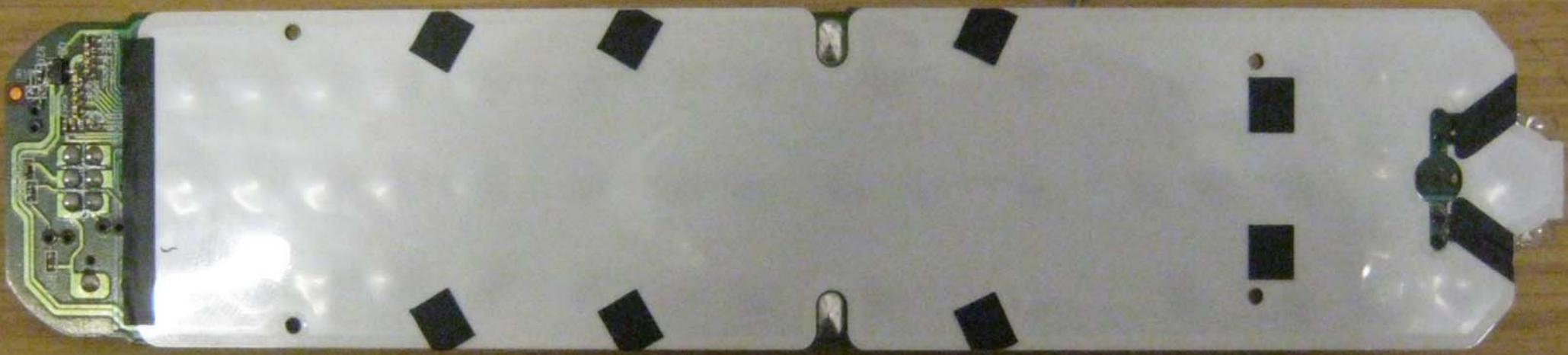
TP8

TP22

+

63  
83  
010









R16  
R13  
R11  
R9  
R7  
R6  
R8  
R12  
R18

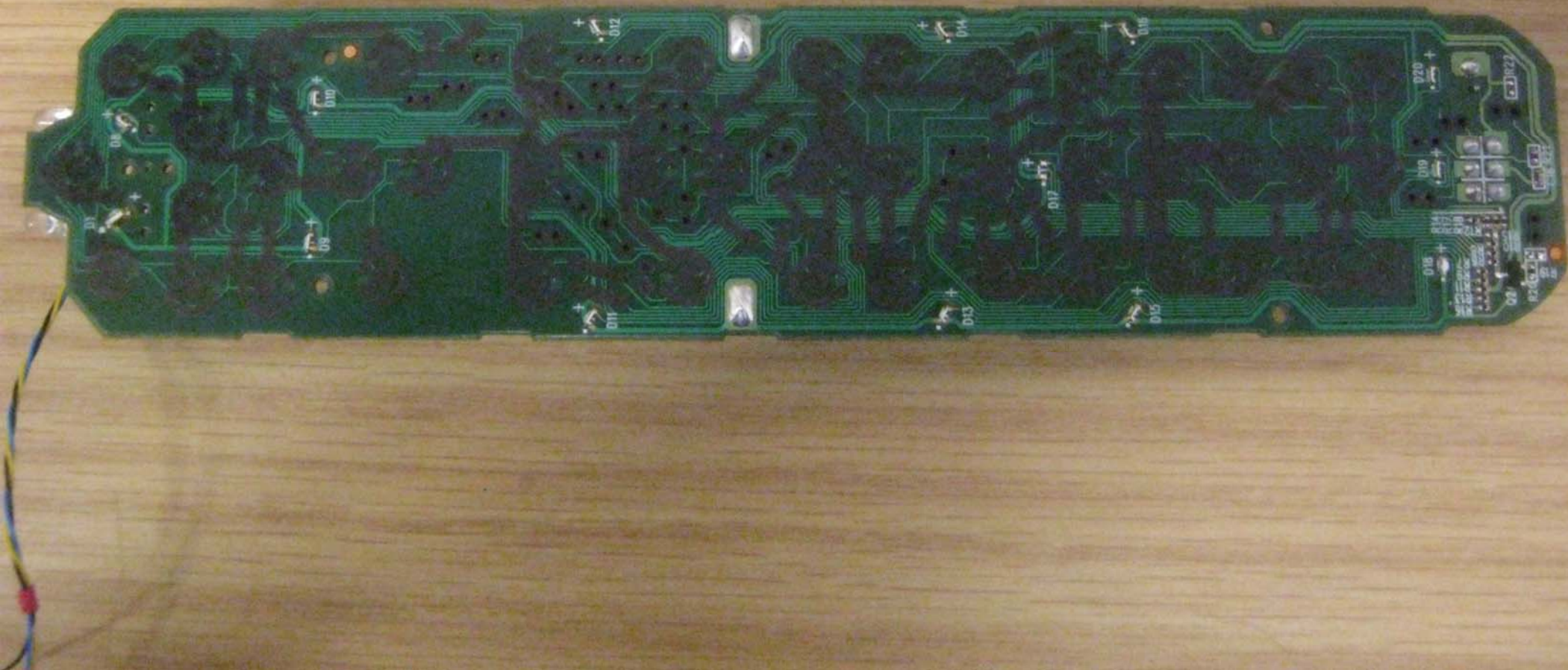
Q2  
R10  
R15

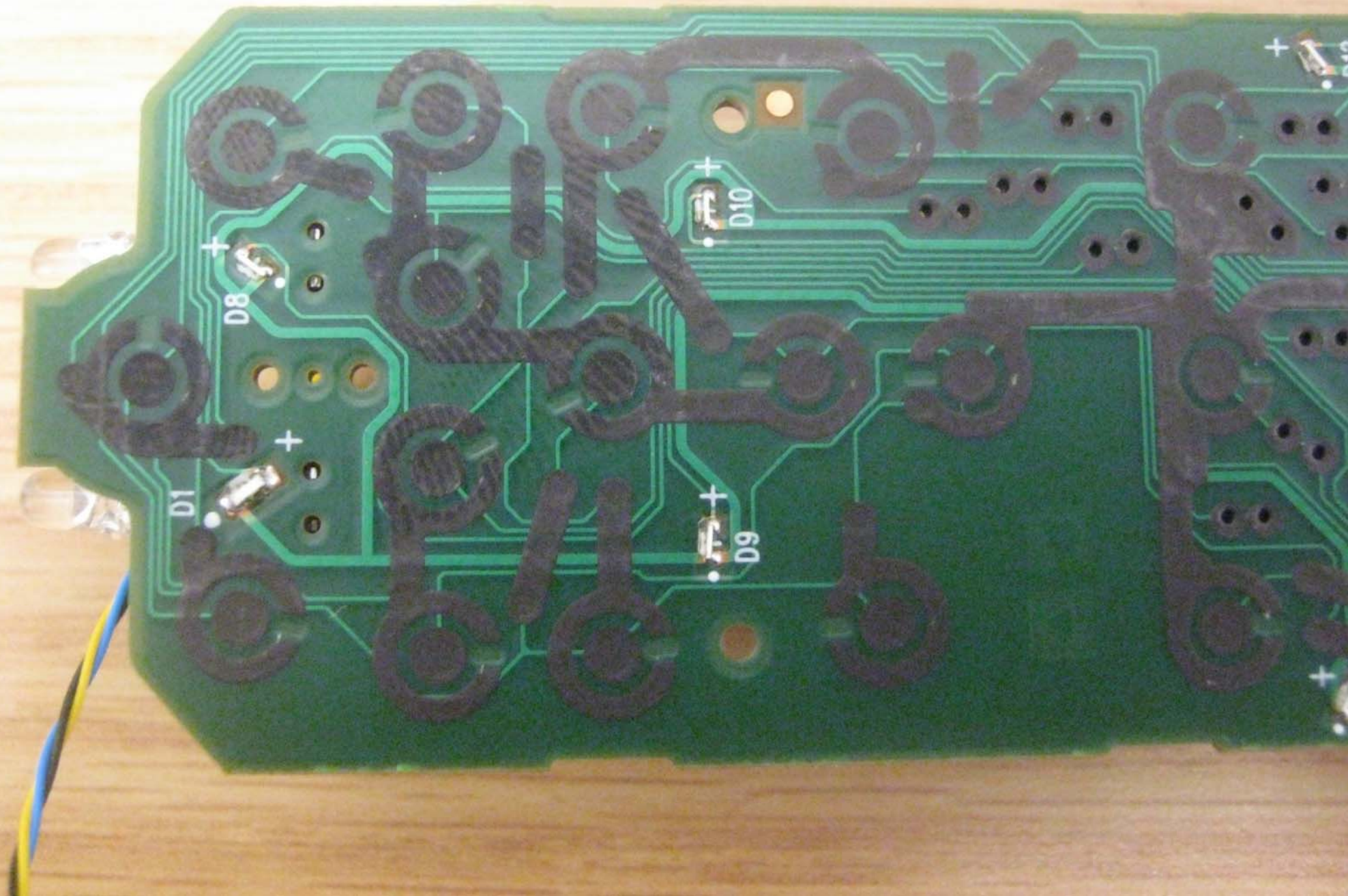
R20  
R19

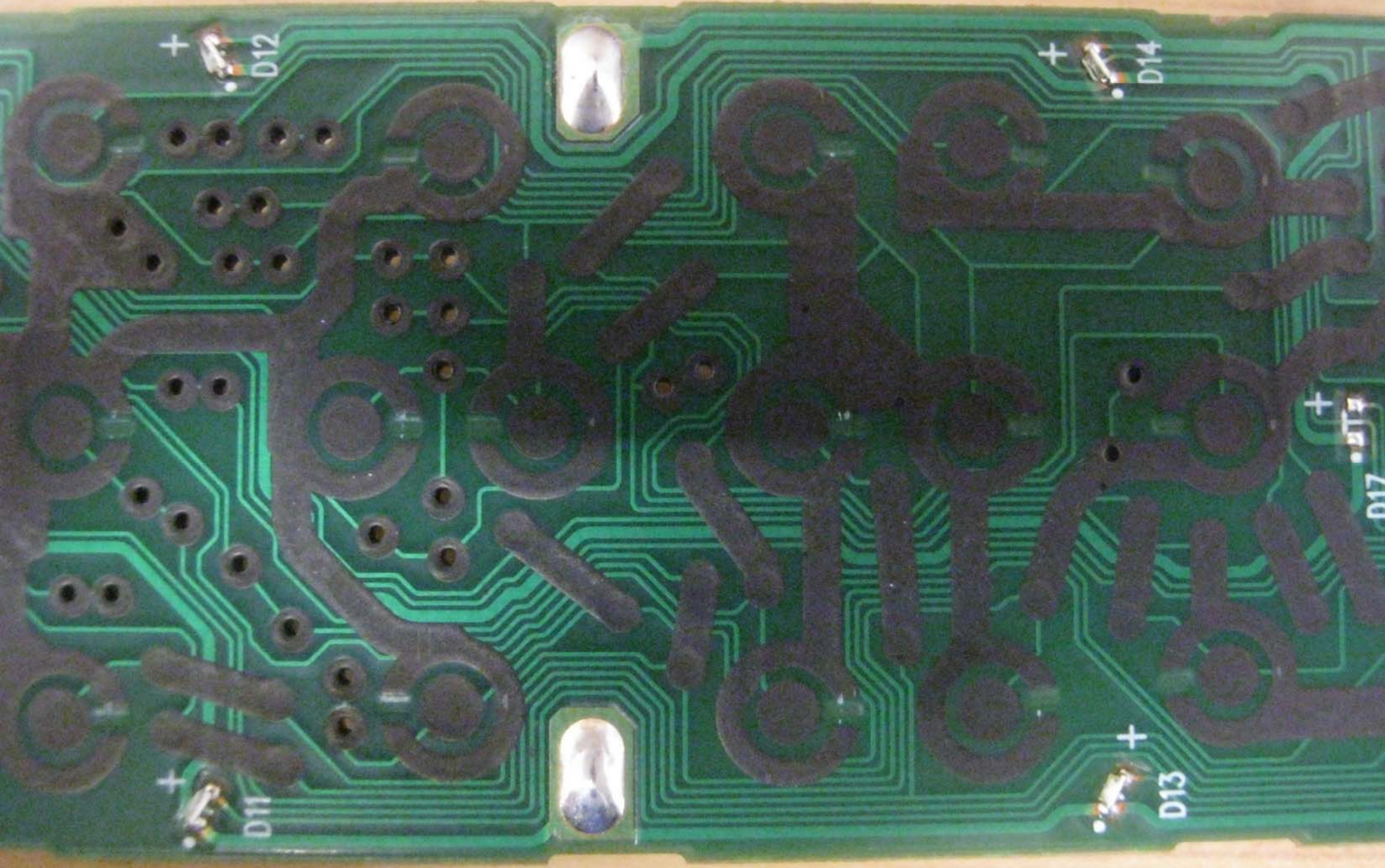
C16  
R21

R22

5







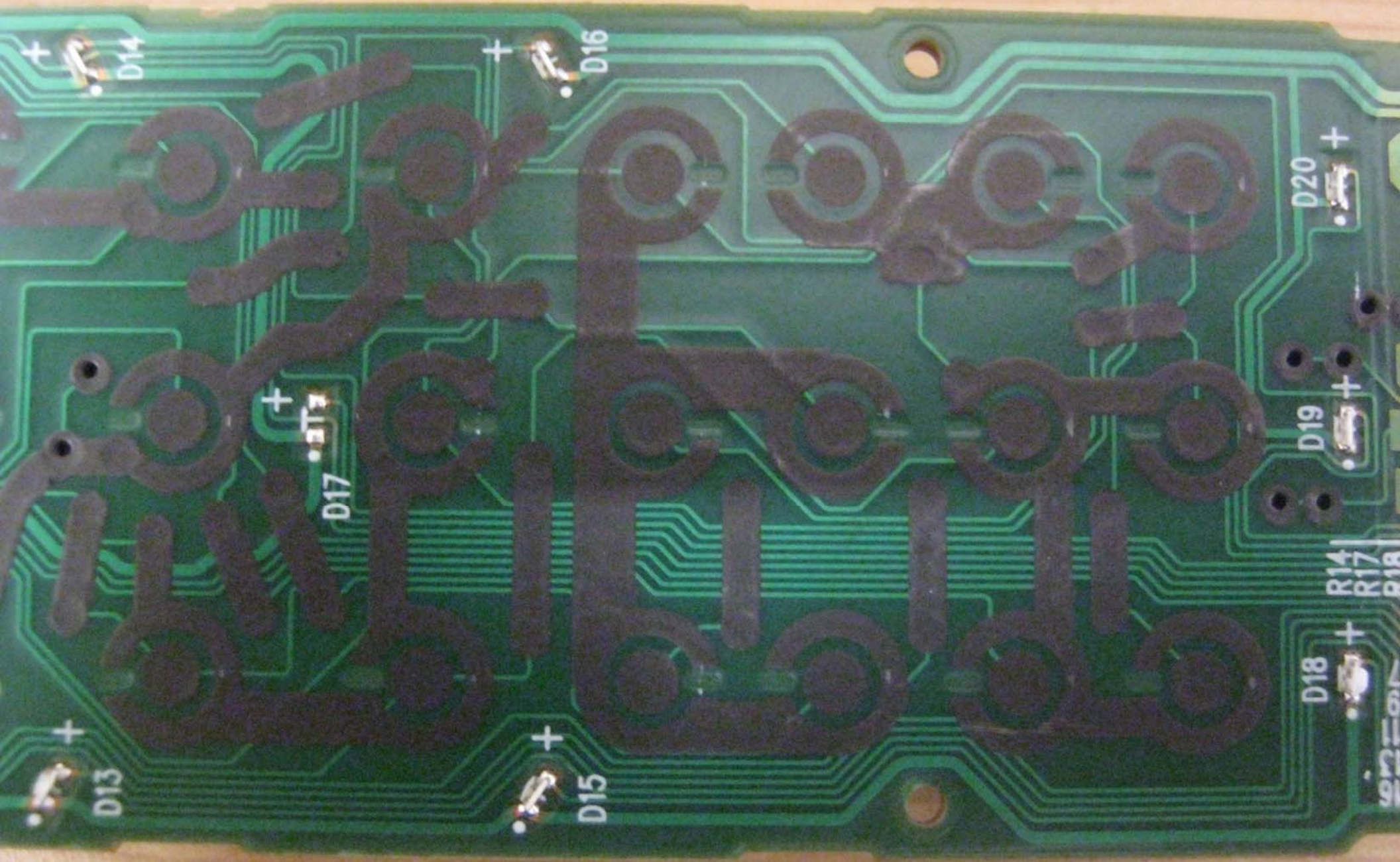
+ D12

+ D14

+ D11

+ D13

+ D17



D13

D13

D14

D14

D15

D15

D16

D16

D17

D17

D18

D18

D19

D19

D20

D20

R14

R17

R18