

SAGE™

by HUGHES®

SECURITY & HOME AUTOMATION

REMOTE USER GUIDE



Safety Instructions

You must keep safety in mind while using this device. Keep these and any other instructions for future reference.

Observe Warnings: Carefully follow all warnings on the device and in the operating instructions.

Heat: Do NOT place the device near heat sources such as radiators, stoves, heat registers, or other appliances that produce heat.

Care and Use

Cleaning: Do NOT use liquid, abrasive, solvent, or aerosol cleaners. Use a damp cloth for cleaning.

When Not in Use: Remove the batteries if this device is to be left unattended or unused for a long period of time.



Refer servicing to qualified personnel when a solid object or liquid has fallen onto or into the device.



Do NOT attempt to service this device. Refer all servicing to qualified personnel. Opening covers other than the battery cover will void the warranty.

Publishing Information

Copyright © 2015. EchoStar Technologies L.L.C., Englewood, Colorado 80112. All rights reserved.

The information in this *User Guide* may change without notice.

Revisions may be issued to tell you about such changes.

Send comments or questions about this *User Guide* to techpubs@echostar.com or

Technical Publications, EchoStar Technologies L.L.C,
90 Inverness Circle East, Englewood, Colorado 80112.

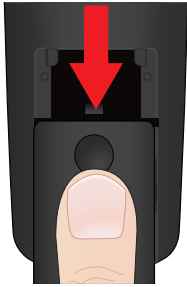
Document Number: 204884

Printed in

All product names, trade names, or corporate names mentioned in this *User Guide* are acknowledged to be the proprietary property of the registered owners.

INSERT THE BATTERIES

1



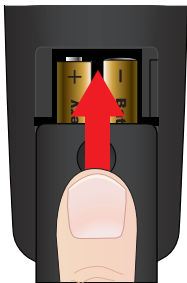
Slide the remote battery cover off.

2



Insert two (2) AA batteries, making sure to match the plus (+) ends with the plus markings on the battery case (opposite each other).

3



Replace the remote battery cover.

PAIRING AND UNPAIRING THE REMOTE

To Pair the Remote

For the remote to work with the SAGE receiver, it must be paired. Use the following procedure to pair the remote.

1



Press the RESET button on SAGE's back panel.

2



On SAGE's remote, press the CAMERA and LIGHTS buttons simultaneously. SAGE confirms pairing is successful.

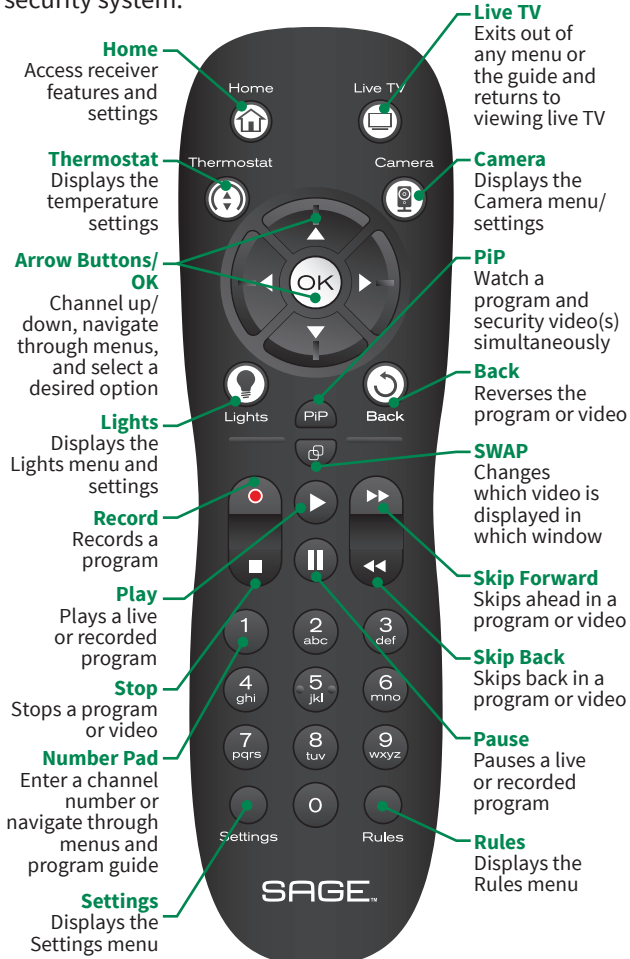
To Unpair the Remote

To unpair a remote from the SAGE receiver, press and hold the THERMOSTAT and BACK buttons simultaneously for 13 seconds. SAGE confirms unpairing is successful.



SAGE REMOTE

Your SAGE remote provides you the following features to control and manage your home automation and security system.



AVOIDING RF INTERFERENCE

Because your remote control uses 2.4 GHz ISM band radio frequencies (RF), you might experience interference from other devices transmitting nearby. The instructions in this section describe how to avoid such conflicts.

Adjusting the Antenna

SAGE communicates with its remote control(s) through an antenna that is located within SAGE.

1



Move the SAGE receiver to a different location. Place it on as high a surface as possible, above all other equipment if in an entertainment center.

2

Move any nearby antenna or radio equipment away from the SAGE receiver. Do not place an over-the-air antenna, WiFi, Bluetooth®, or ZigBee® devices on or near the SAGE receiver.

TROUBLESHOOTING

Use this information if you have a problem using the remote. To solve a particular problem do the following:

- Find the information that relates to the problem you are experiencing. Try the suggested solution for that problem.
- Make sure your remote control has fresh batteries. If you see the Remote Battery Low warning on your TV screen, it is time to change the batteries. Follow the instructions on page 1.
- Make sure you have a direct line of sight between the remote and the receiver.
- Visit www.SAGEbyHughes.com.

When I press a button on the remote control, the equipment does not do what I expect.

What to do: Point the remote control directly at the SAGE receiver, with no objects blocking the signal path. The remote control uses IR signals to control the devices. IR signals travel less than 40 feet and cannot go through walls or other solid objects.

If the batteries are missing or dead, replace them with new AA-size batteries.

My remote control does not work well when controlling the SAGE receiver.

What to do: Move your receiver to different locations. For best results, place the receiver as high as possible, above all other equipment in your entertainment center.

My remote control seems to have stopped working.

What to do: Press one or more buttons on the remote to wake the remote control. The remote control may have gone to sleep to reduce battery drain. If your remote is still unresponsive, take out the batteries and press any button for three seconds, then reinsert the batteries.

TROUBLESHOOTING, CONTINUED

My SAGE receiver does things even though I have not pressed any remote control buttons.

What to do: Check the System Info screen to view a list of remotes paired to your SAGE receiver. Unpair the unwanted remote controls from this screen (see *Pairing and Unpairing the Remote* on page 2). See *Avoiding RF Interference* on page 4 for more information.

My remote control is not working.

What to do: Change the batteries as described on page 1.

My SAGE remote control does not work well from far away.

What to do: Move the SAGE receiver to different locations. For best results, place the receiver as high as possible, above all other equipment in your entertainment center.

Move any nearby off-air antenna away from the remote antenna. Do not place an off-air antenna on your SAGE receiver.

LIMITED WARRANTY

EXCHANGE PROGRAM

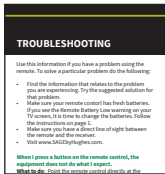
IF YOU NEED HELP

1



Review this *User Guide*.

2



See *Troubleshooting* on page 5.

3



Visit www.SAGEbyHughes.com.

REGULATORY FACTORS

This device complies with Part 15 of FCC Rules. Operation is subject to the following two conditions:

1. This device may not cause harmful interference, and
2. This device must accept any interference received, including interference that may cause undesired operation.

Changes or modifications to this device may void your authority to operate this equipment.

This equipment has been tested and found to comply with the limits for a Class B digital device, pursuant to Part 15 of the FCC Rules. These limits are designed to provide protection against harmful interference in a residential installation. This equipment generates, uses, and can radiate radio frequency energy and, if not installed and used in accordance with the instructions, may cause harmful interference to radio communications. However, there is no guarantee that interference will not occur in a particular installation. If this equipment does cause harmful interference to radio or television reception, which can be determined by turning the equipment off and on, the user is encouraged to try to correct the interference by following one or more of the following measures:

- Reorient or relocate the receiving antenna.
- Increase the separation between the equipment and receiver.
- Connect the equipment into an outlet on a circuit different from that to which the receiver is connected.
- Consult the dealer or an experienced radio/TV technician for help.

SAGE™

by HUGHES®

SECURITY & HOME AUTOMATION

SAGEbyHughes.com

For all your customer needs visit

SAGEbyHughes.com



204884