

This device complies with part 15 of the FCC rules.  
Operation is subject to the following two conditions:  
1. This device must not cause harmful interference.  
2. This device must accept any interference  
received including interference that may  
cause undesired operation.

FCC ID: MG3-1160  
Use AA Batteries only

UEI Charter Spectrum Remote 2015  
URC-11608C0-R  
60162-416100 V02  
26224-6106A  
P1 E319508 Zy-2 94V-0  
May, 2015

2015



VBAATT

Use AA Batteries only

FCC ID:MG3-1160

J27

J27

AGND

This device complies with part 15 of the FCC rules. Operation is subject to the following two conditions:

1. This device may not cause harmful interference.
2. This device must accept any interference received, including interference that may cause undesired operation.



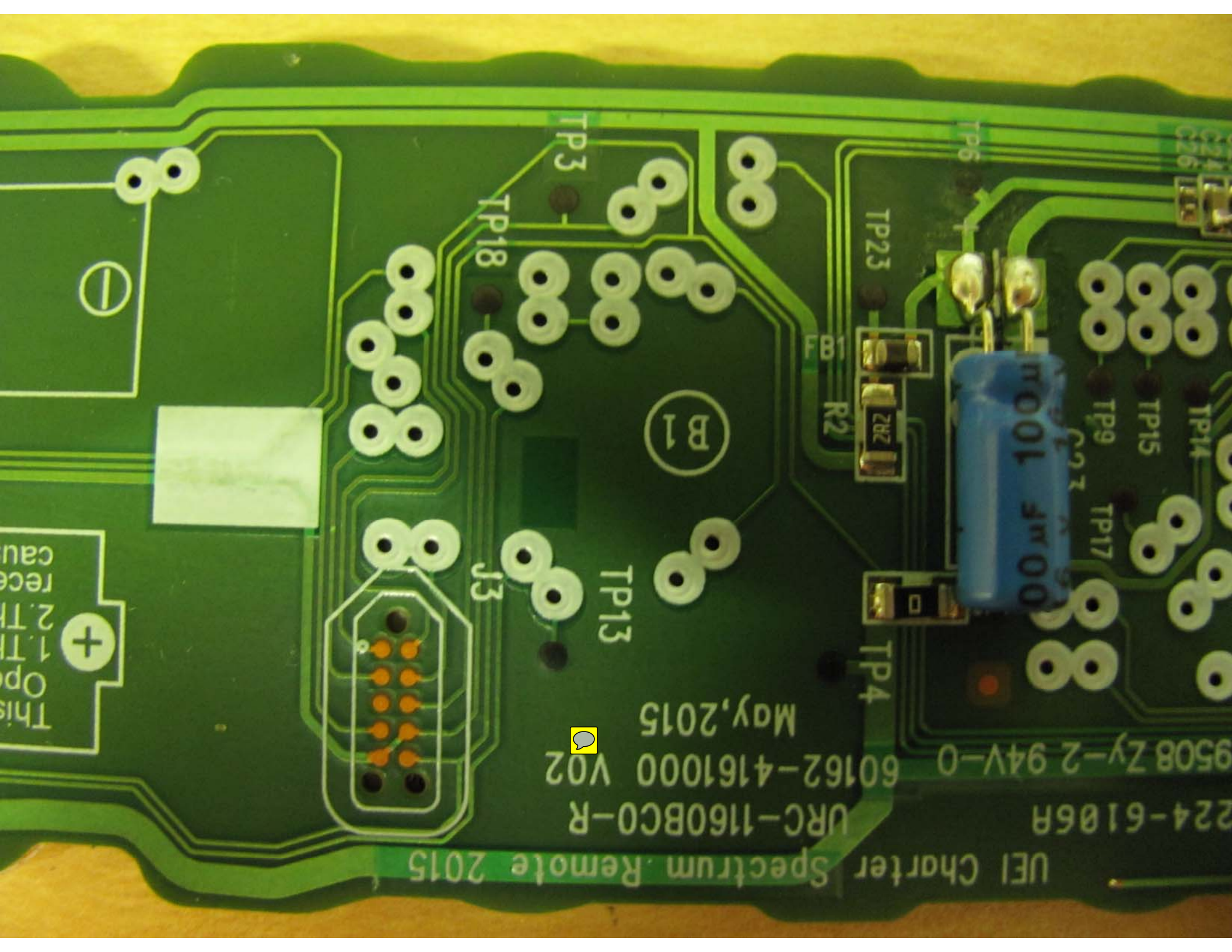
UEI Charter Spectrum Remote 2015

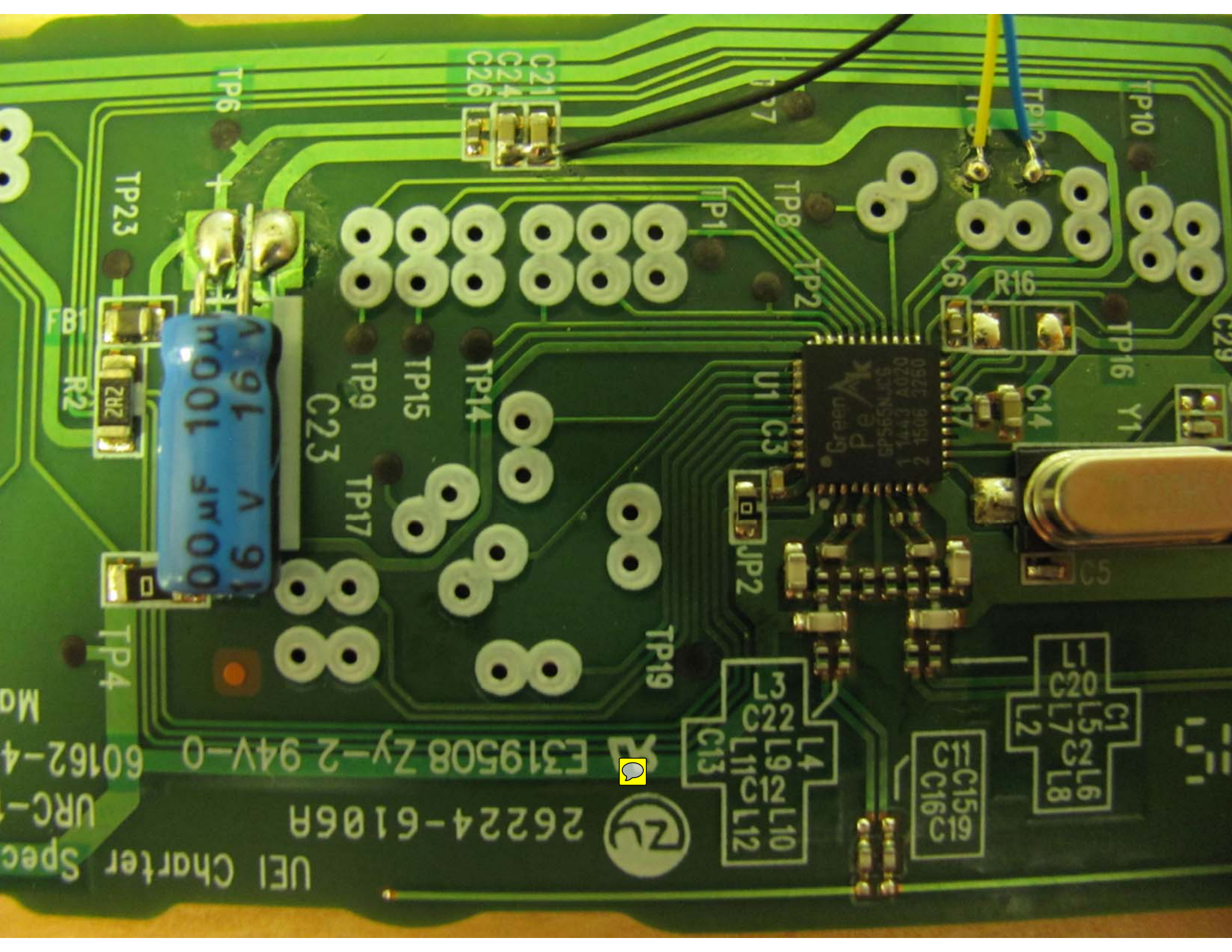
224-6106R  
URC-1160BC0-R  
60162-4161000 V02  
May, 2015

This Op  
1. TI  
2. TI  
rece  
can

+

-





UEI Charter Spec  
URC-  
60162-4  
Ma

26224-6106A

E319508 Zy-2 94V-0



L4  
L9  
L10  
L11  
L12  
C13

C15  
C16

C1  
L5  
L6  
L7  
L8  
L2

A 91 A 91  
M001 Fm00

9031 2  
A020  
E441 1  
M39545  
use:rg

TP6

C21  
C24  
C26

TP7

TP23

R2  
R1

TP1  
TP2  
TP8

C23

TP9  
TP15  
TP14  
TP17

TP19

JP2

C3  
U1

C6

R16

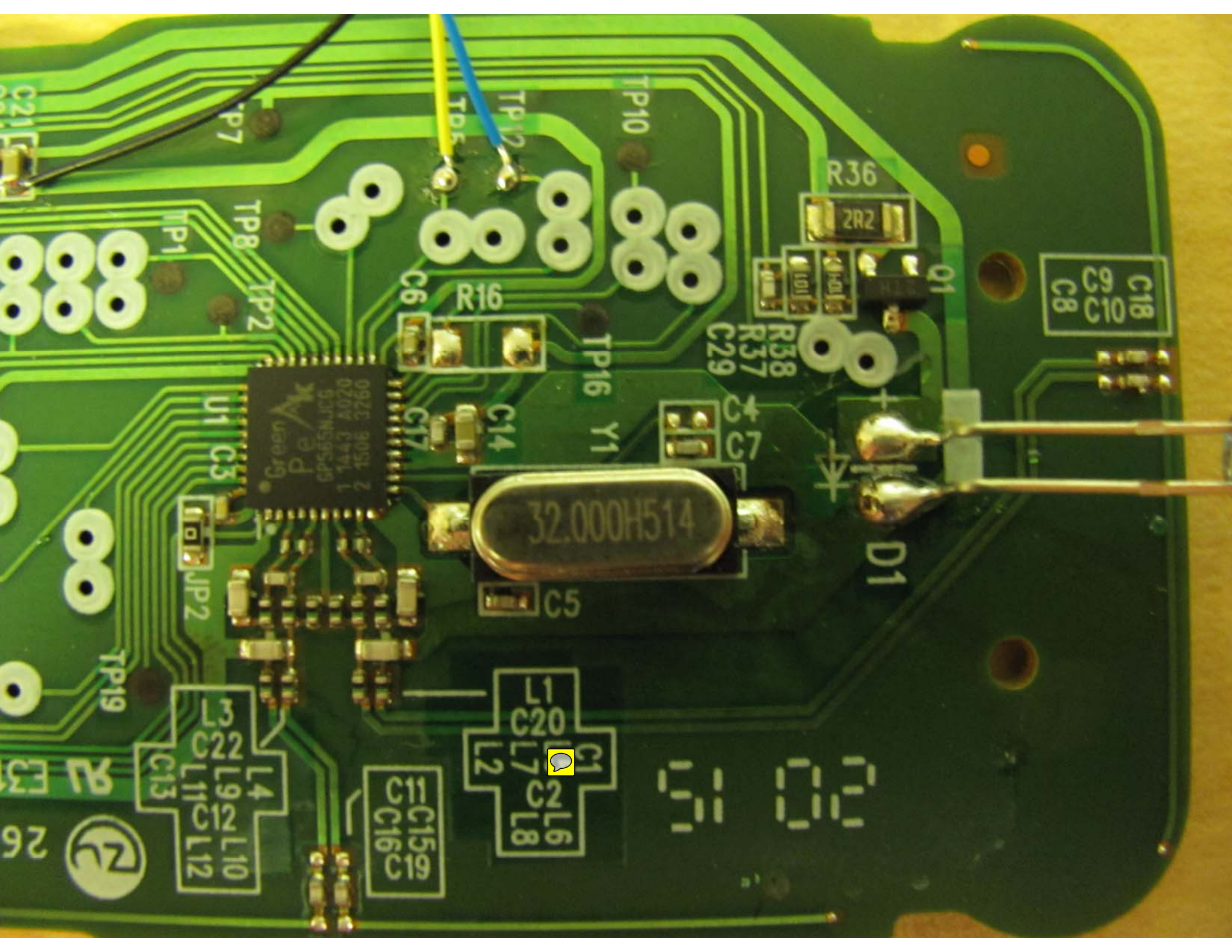
TP16  
Y1

C5

TP10

TP12

C29



TP7

TP12

TP10

R36

2R2

TP1

TP8

C6

R16

TP16

C29

R38

R37

C18  
C9  
C10  
C8

Green  
Pe  
U1  
C3  
9056  
020A  
1443  
607MS9C49  
2 1505 3260

C17

C14

Y1

C4  
C7

32.000H514

D1

JP2

C5

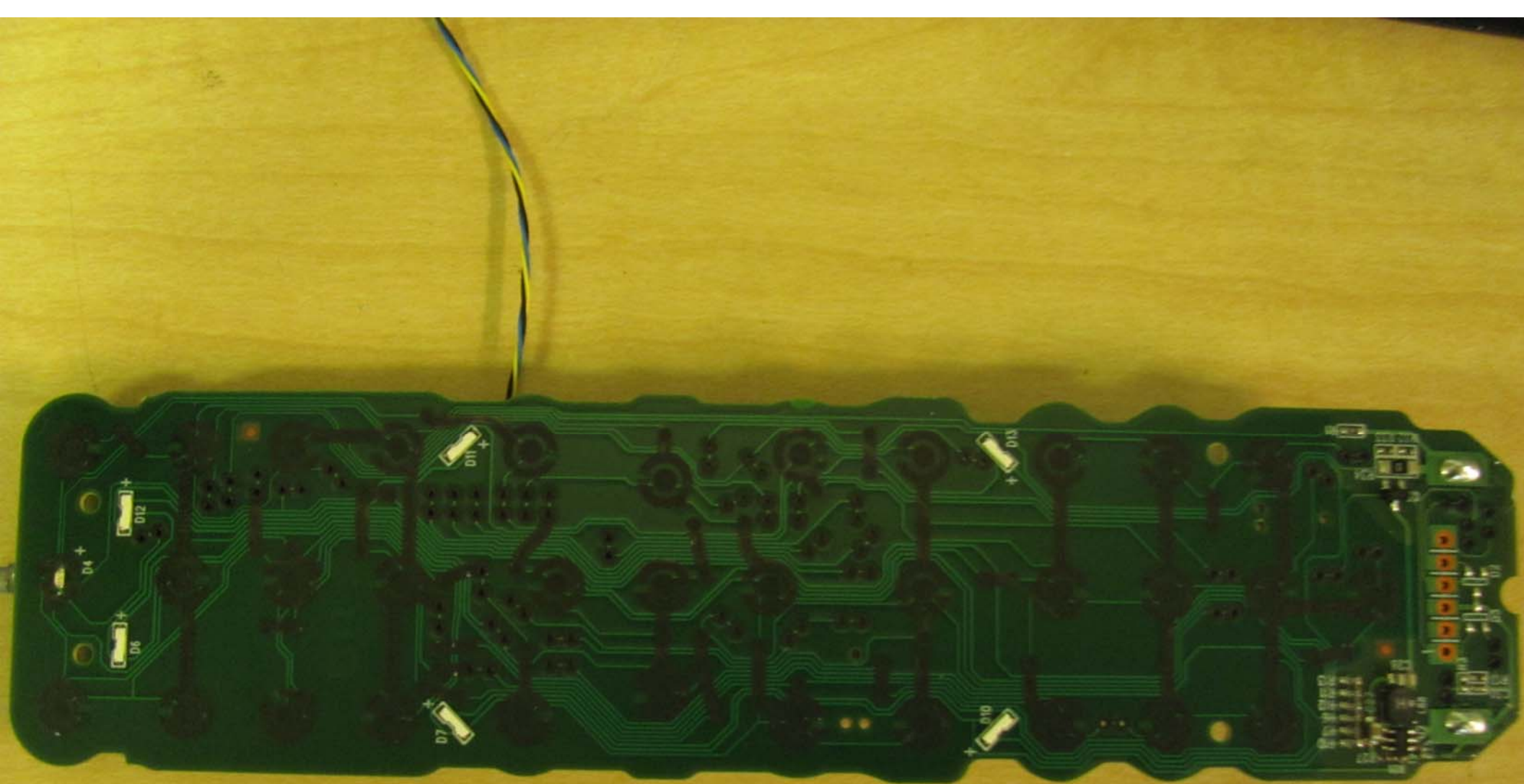
L4  
C13  
L9  
L10  
L11  
L12

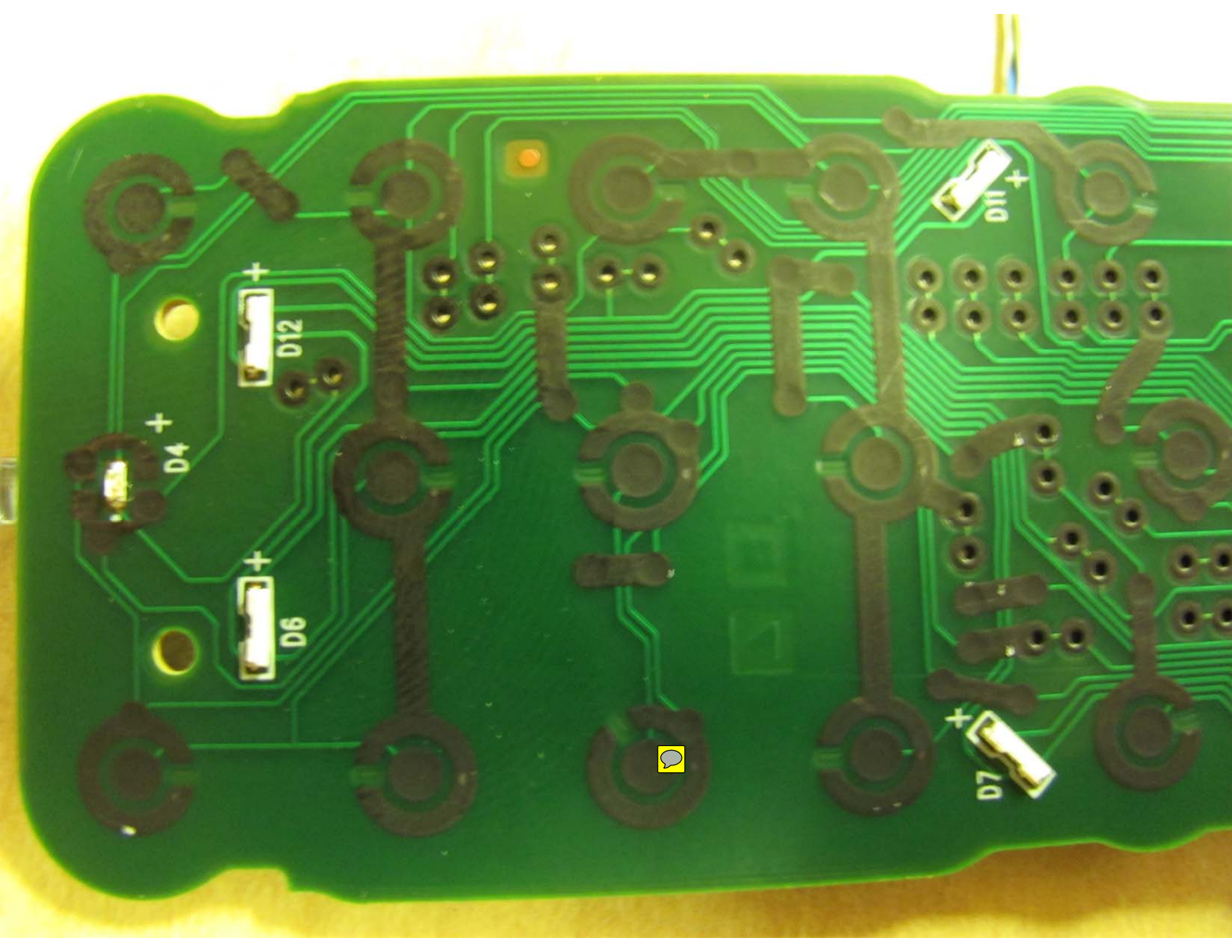
C1  
L2  
L7  
L8  
L6

C15  
C16

26







D4 +

D12 +

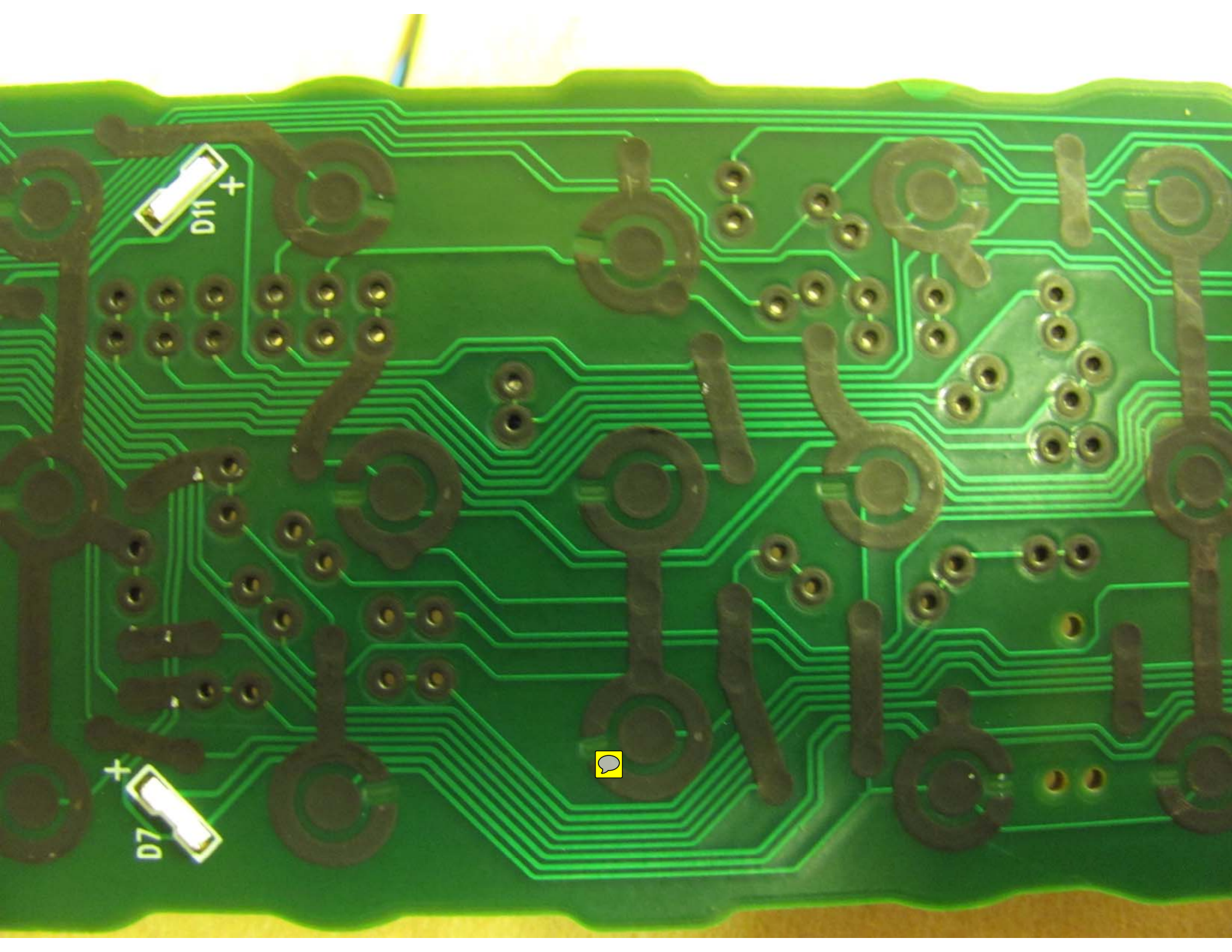
D6 +

D11 +

D7 +



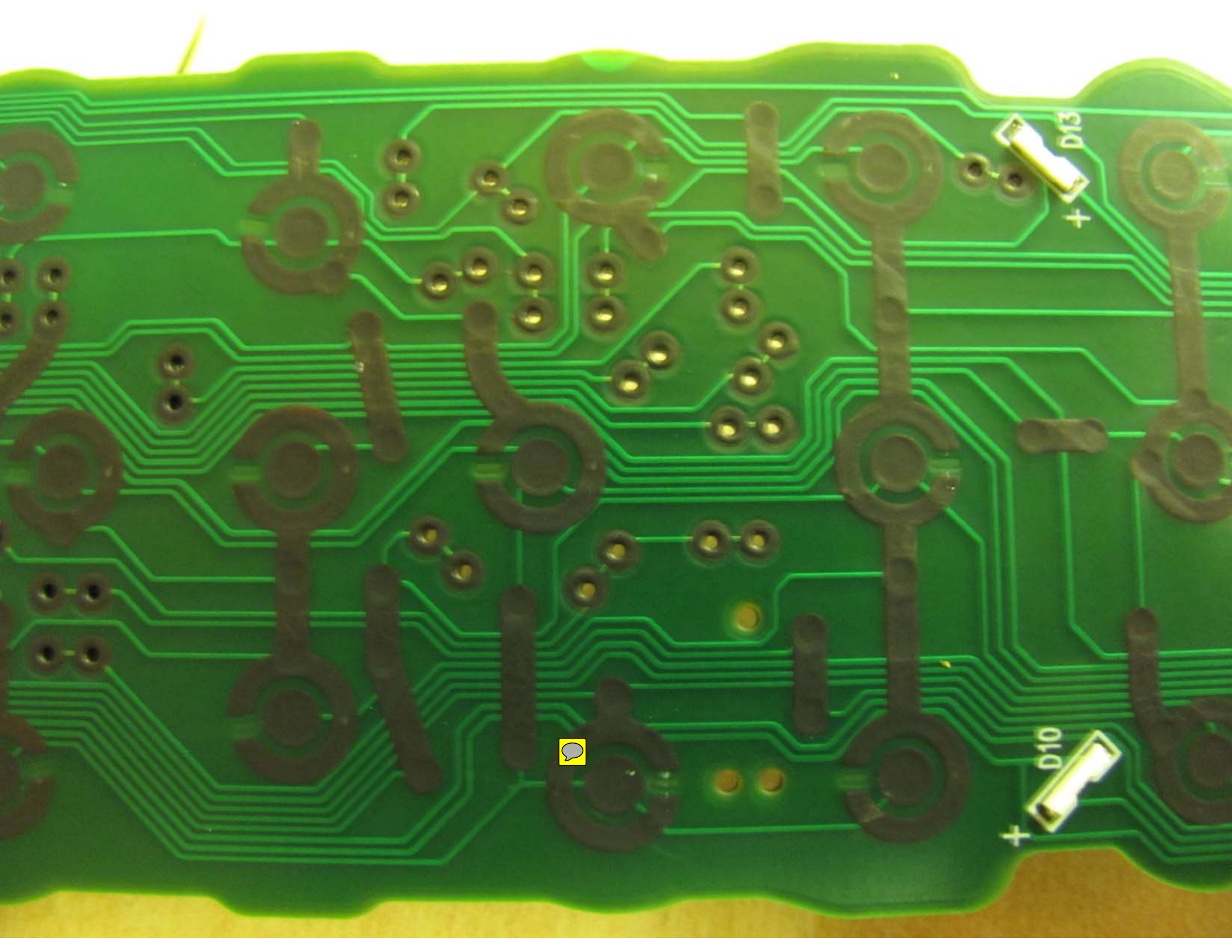




D11 +

D7 +

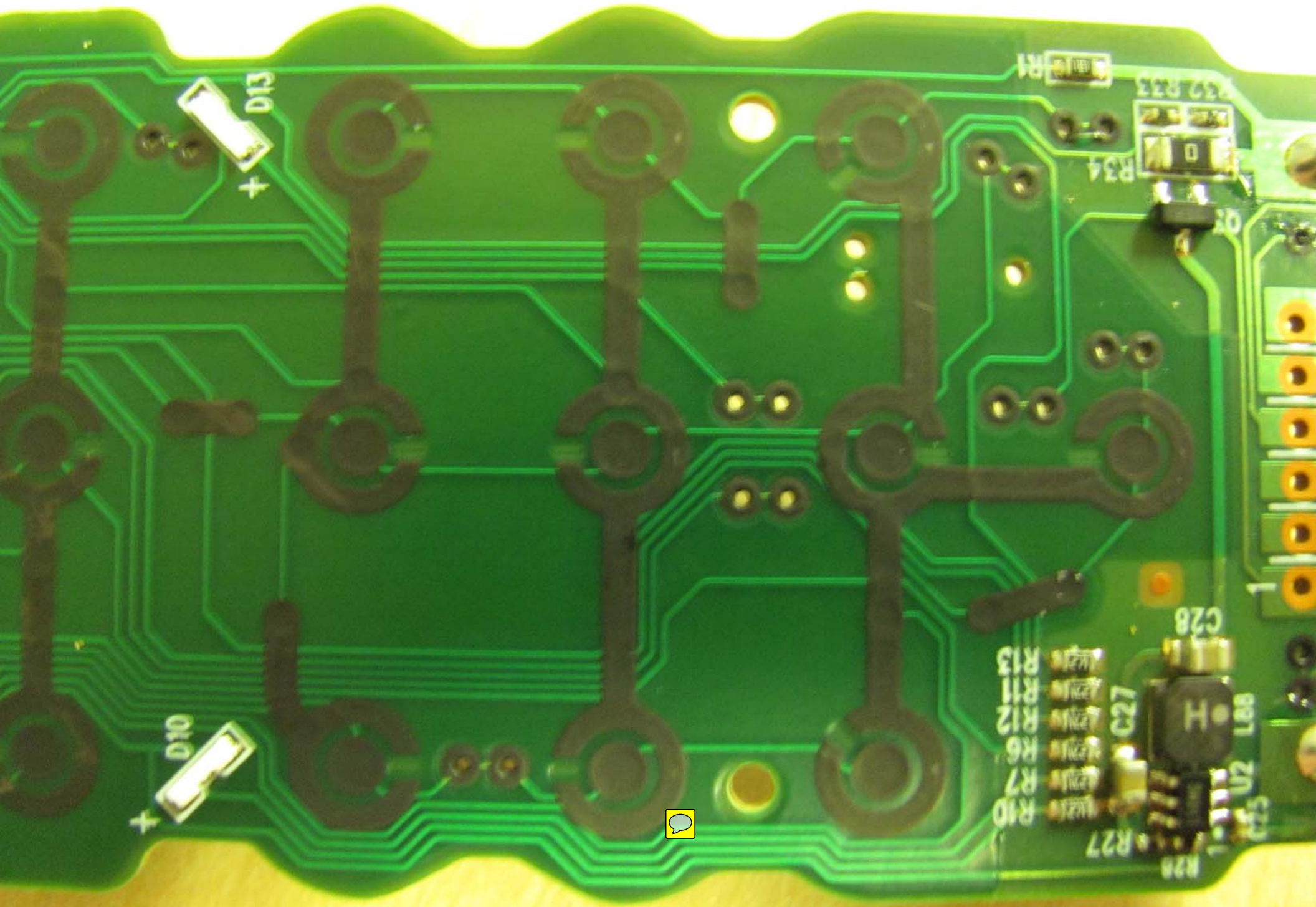




D13  
+

D10  
+





D13  
+

D10  
+

R1

R32 R33

R34

R10  
R7  
R6  
R12  
R11  
R13

C28

L29

R27

H

C27

ZU

R28

R29

R30

R31

R32

R33

R34

R35

R36

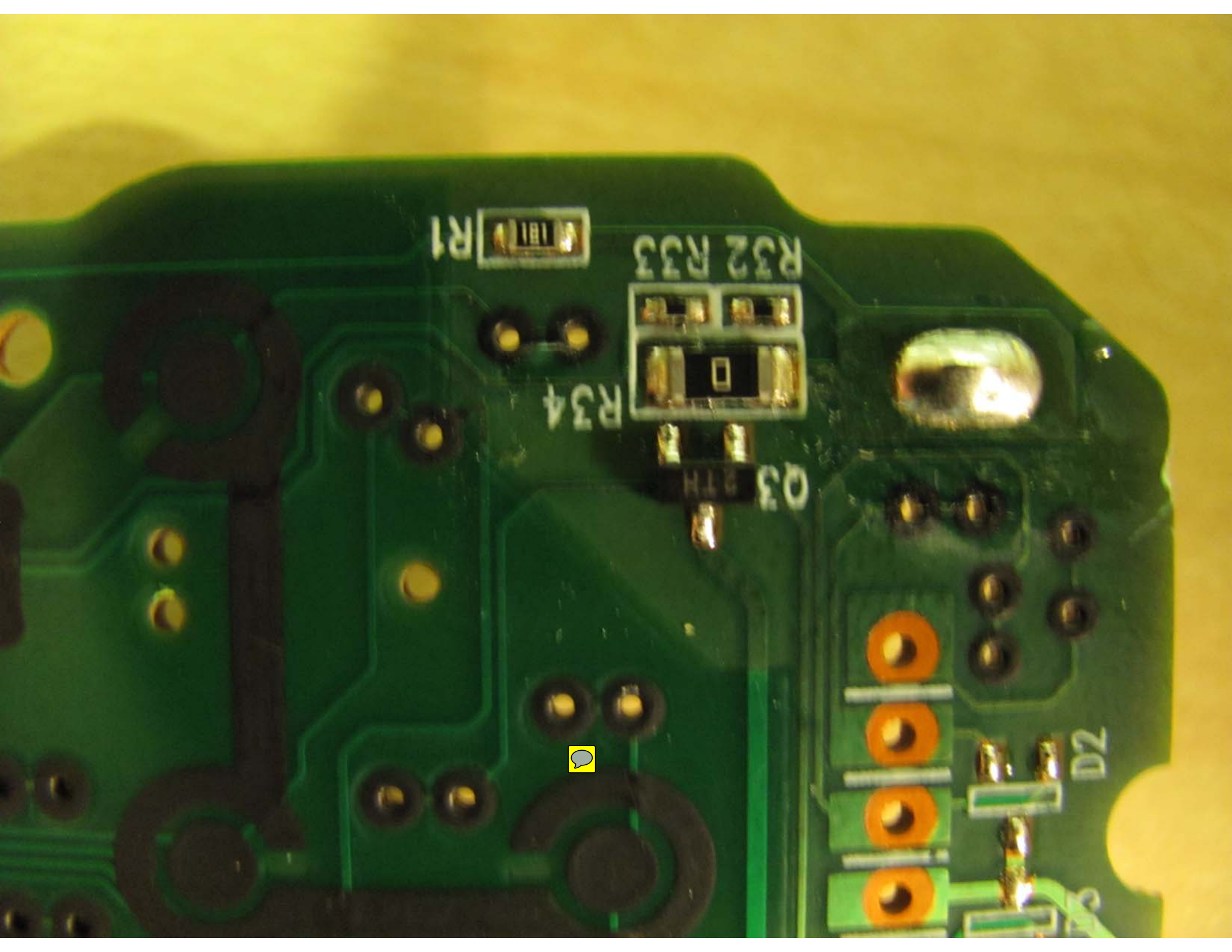
R37

R38

R39

R40





R1

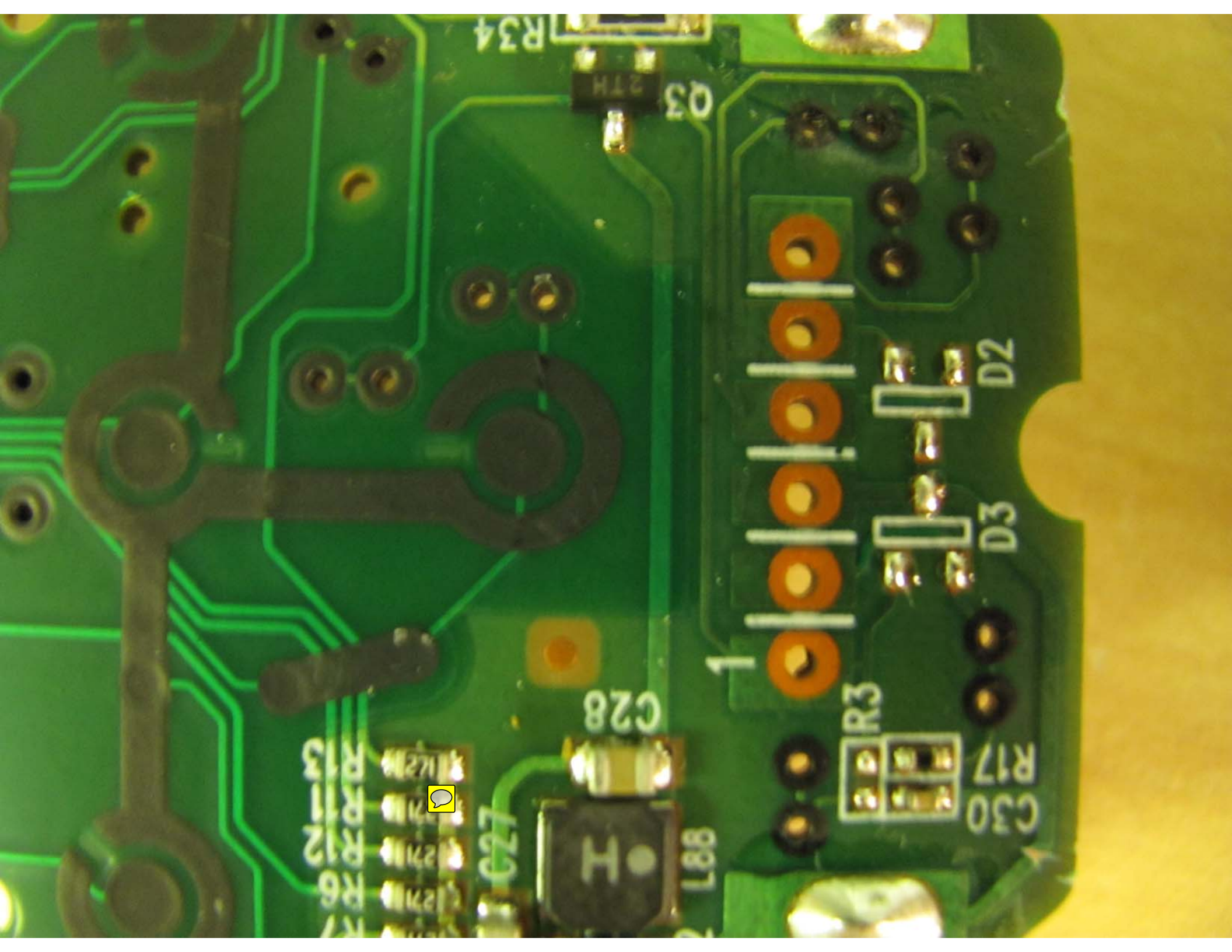
R32 R33

R34

Q3

D2





R34

Q3

D2

D3

1

R3

R17

C30

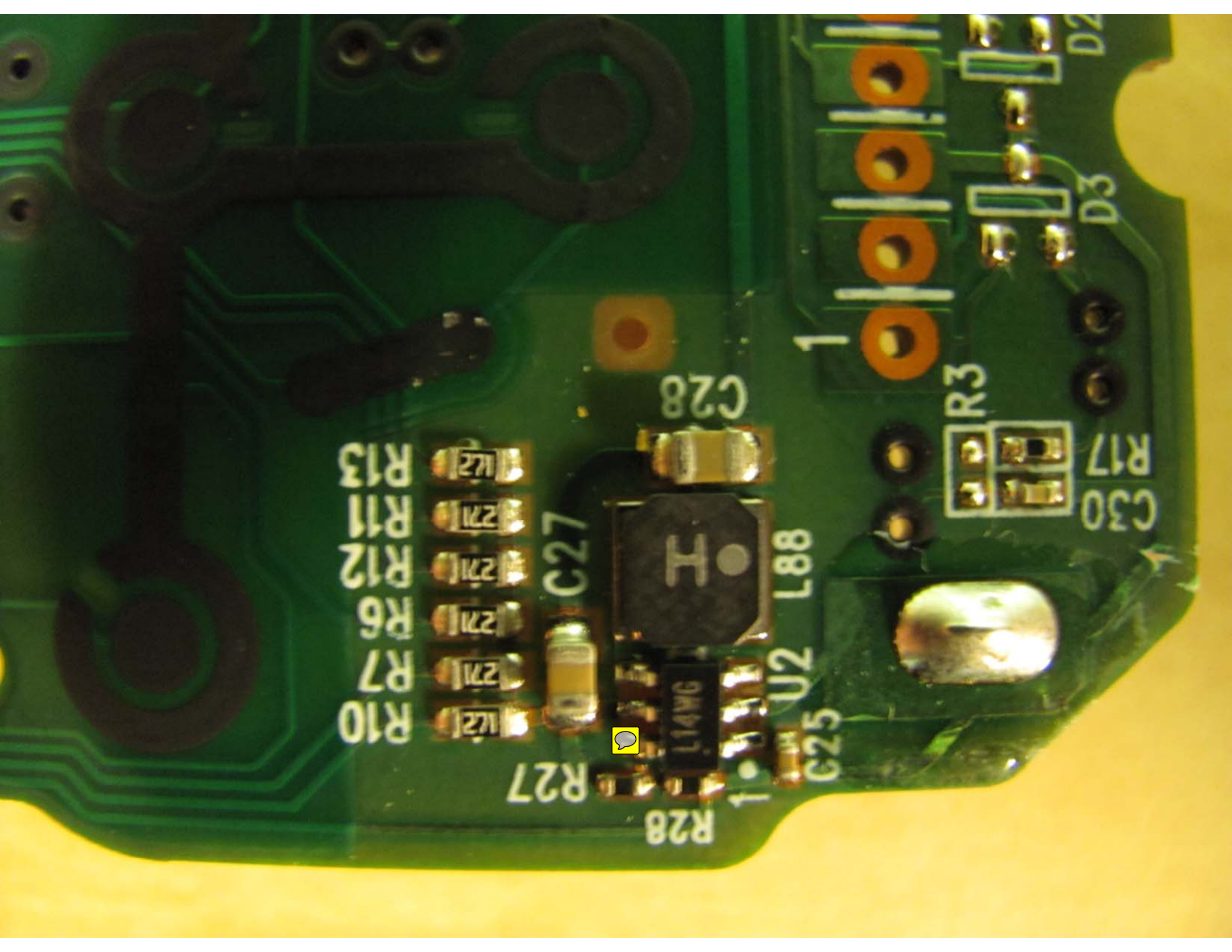
C28

L88

C27

R12  
R11  
R13  
R6





R10  
R7  
R6  
R12  
R11  
R13

R27  
C27

L14WG  
U2

R28  
C28

L88  
C25

R17  
C30

D3  
D2