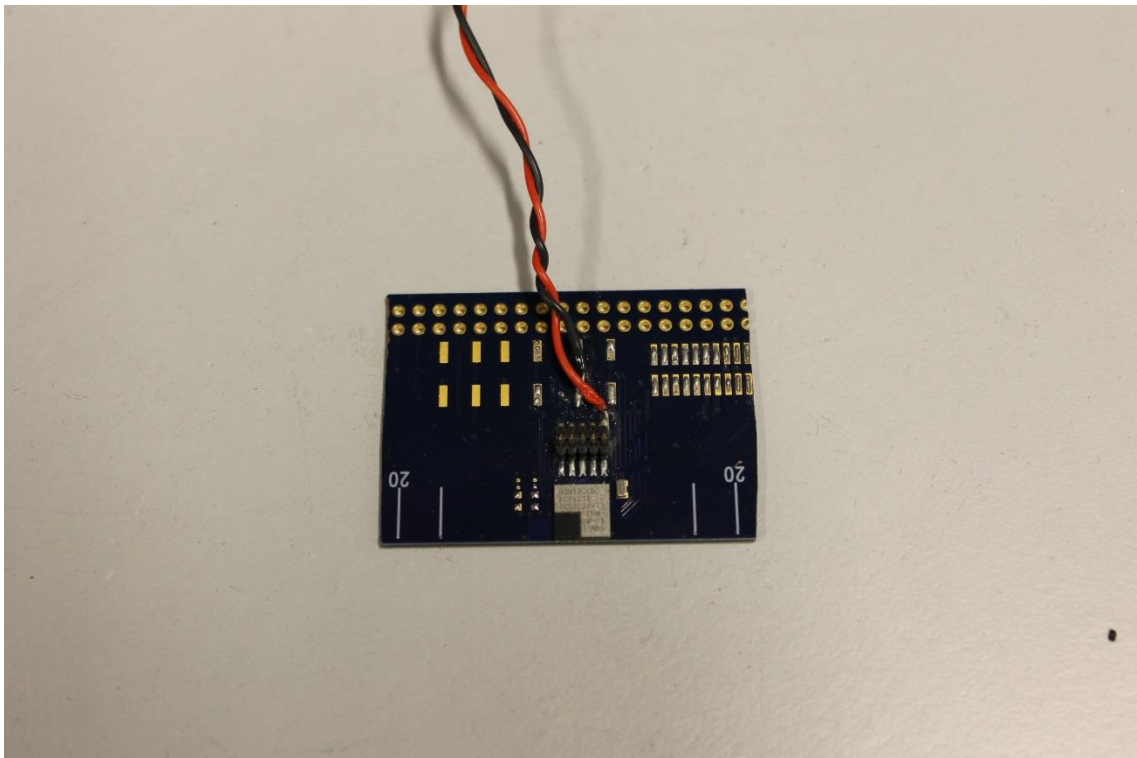
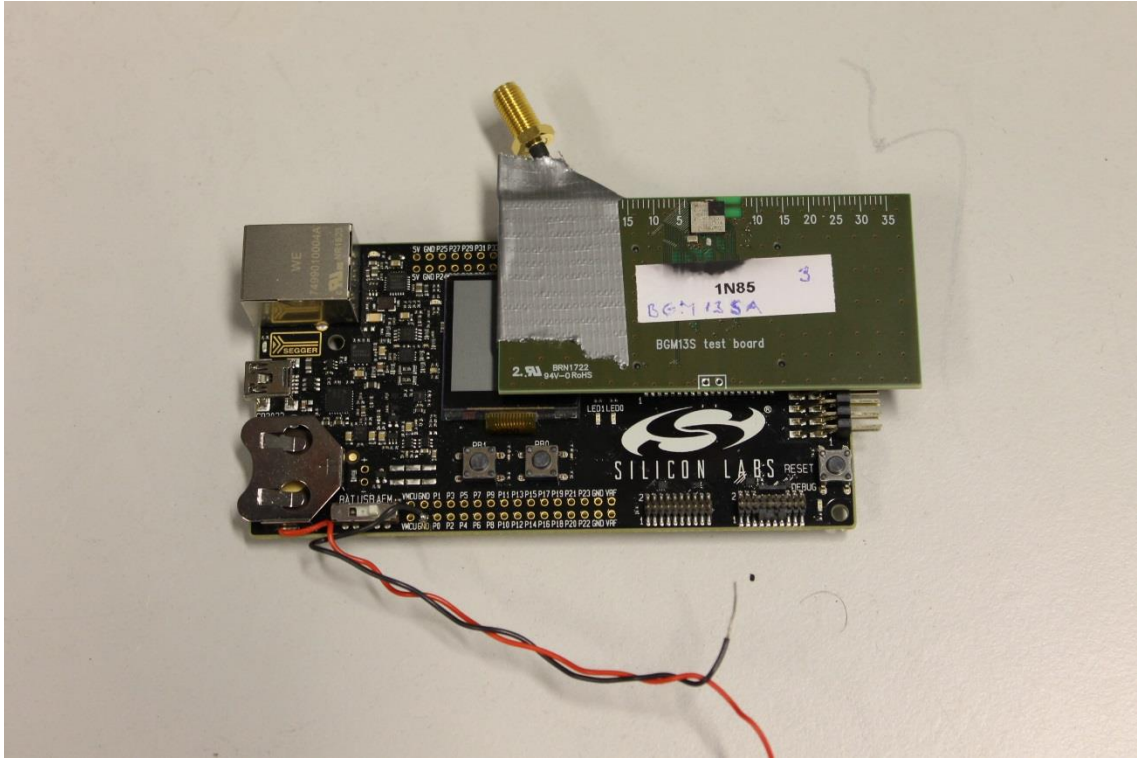


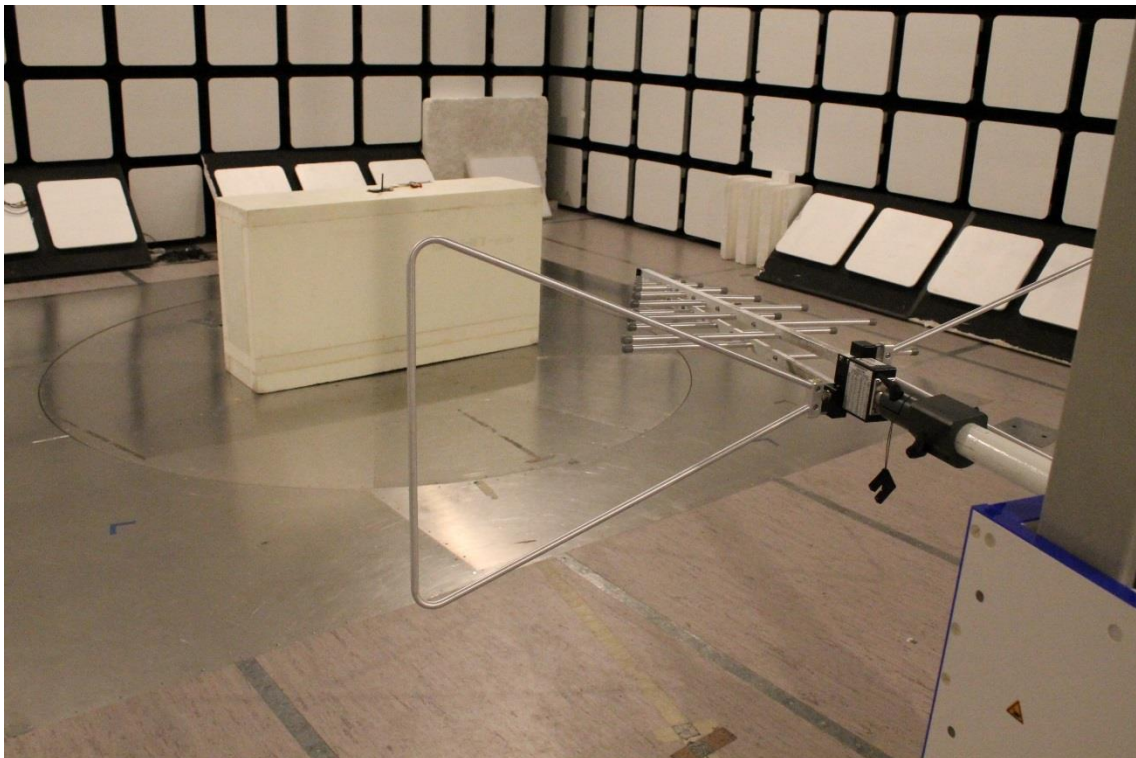
Photograph 1. DUT 1, BGM13SN



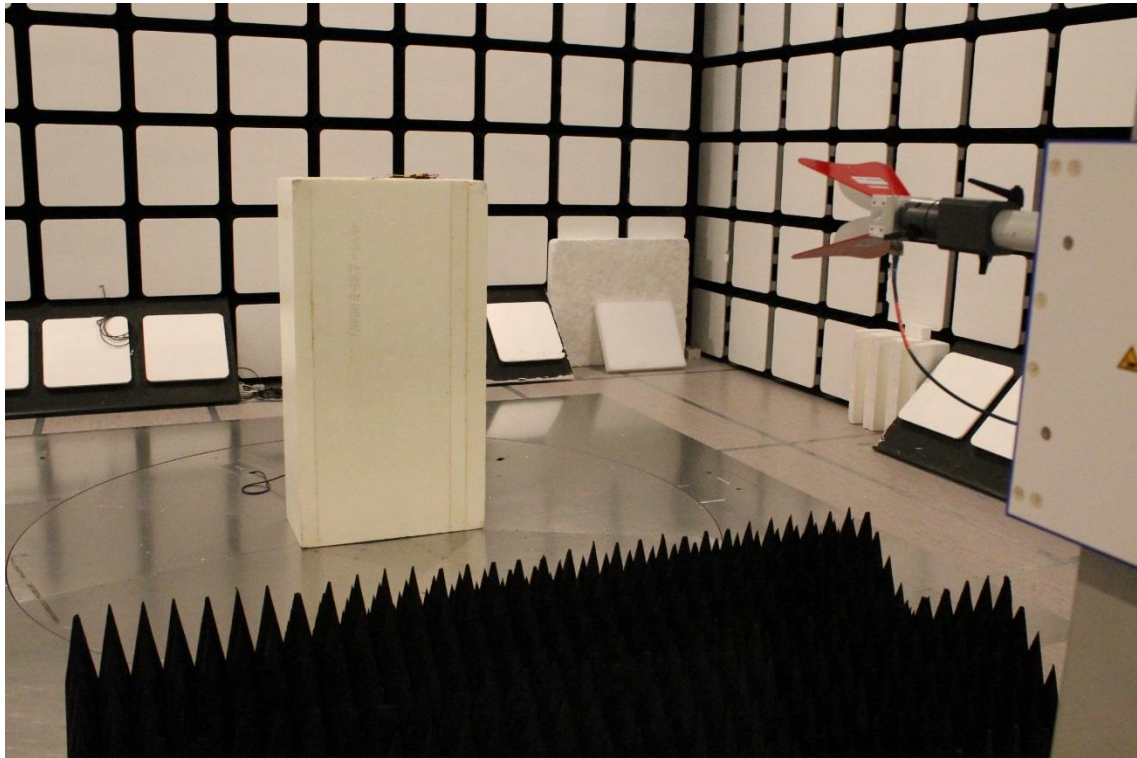
Photograph 2. DUT 2, BGM13SA



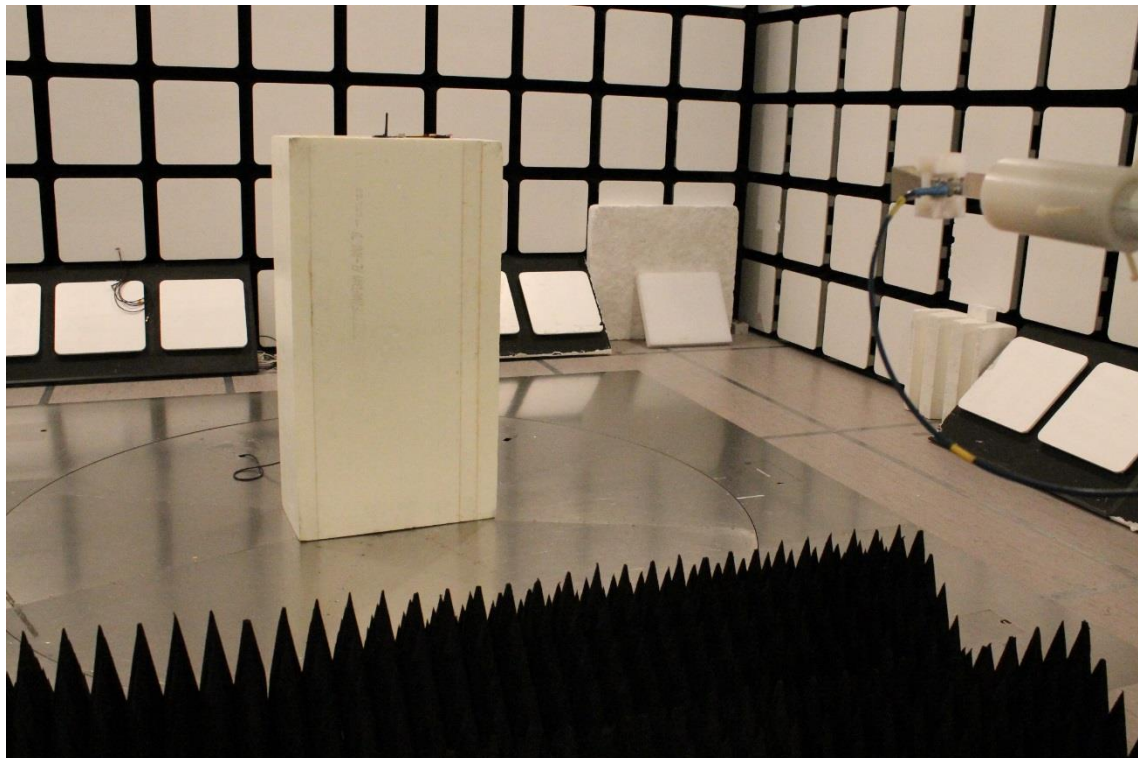
Photograph 3. DUT 3, BGM13SA



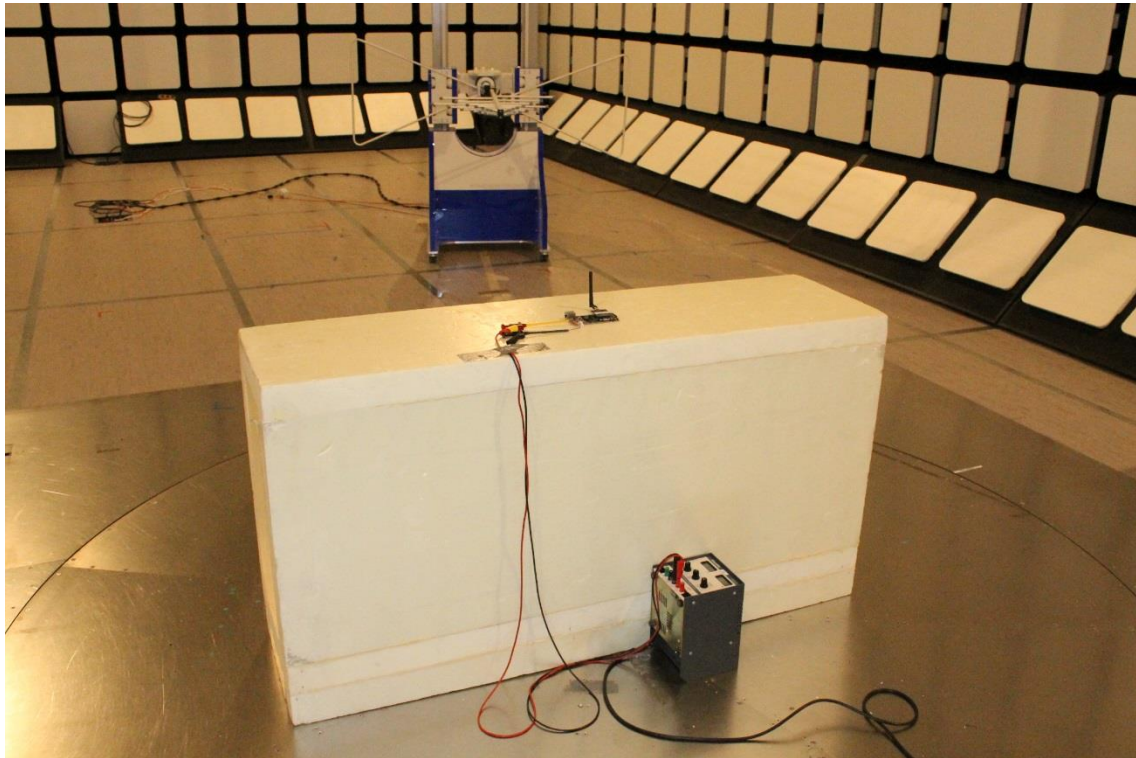
Photograph 4. Radiated Spurious Emissions 30 – 1000 MHz



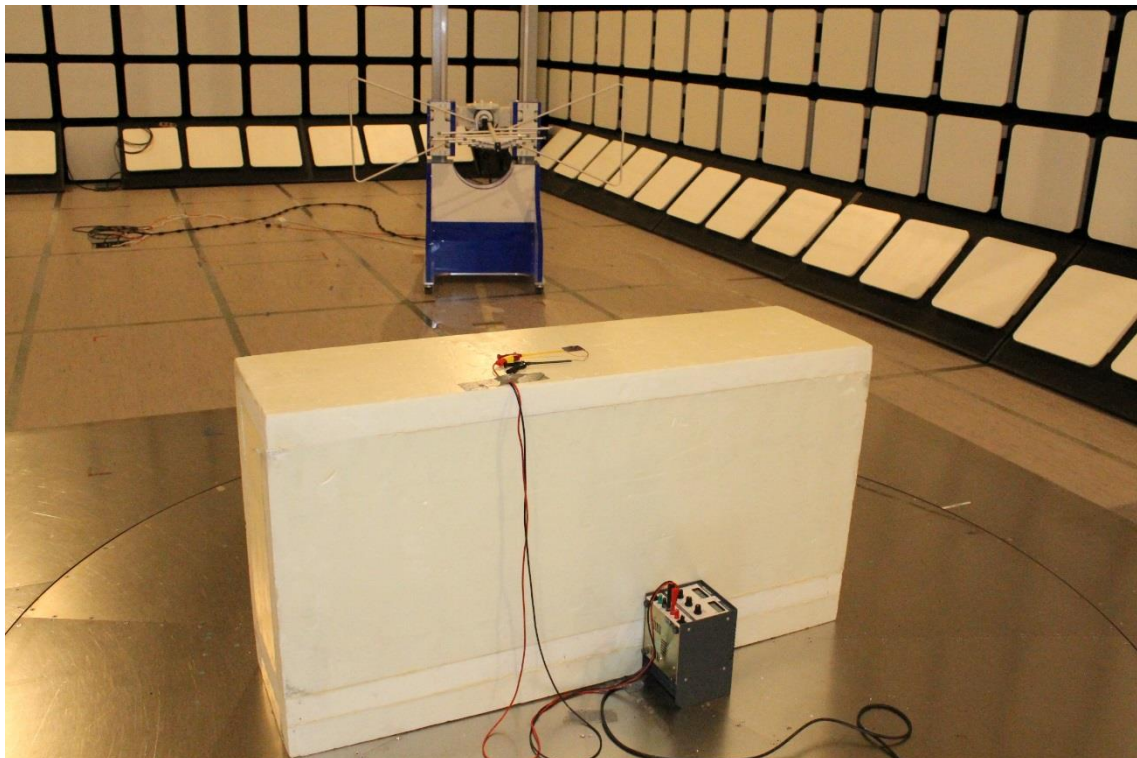
Photograph 5. Radiated Spurious Emissions 1 – 18 GHz



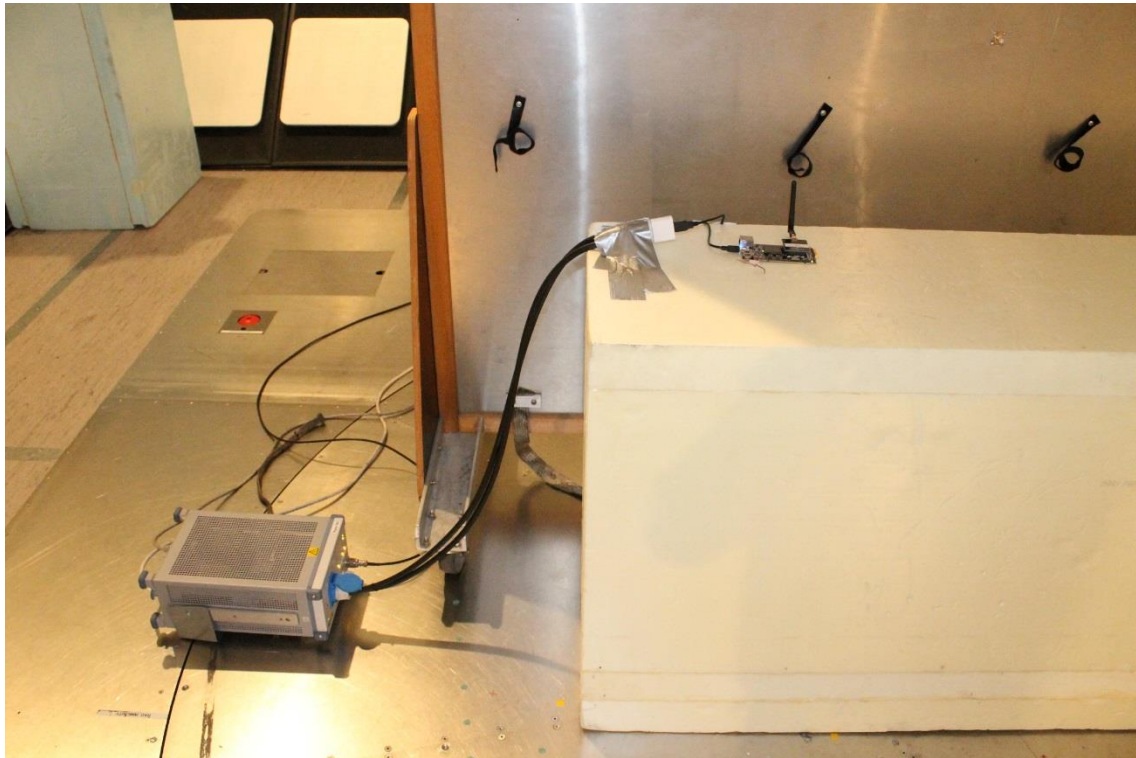
Photograph 6. Radiated Spurious Emissions 18 – 26.5 GHz



Photograph 7. EUT on table (External antenna)



Photograph 8. EUT on table (integral chip antenna)



Photograph 9. Conducted Emissions for DUT 1, BGM13SN



Photograph 10. Conducted Emissions for DUT 2, BGM13SA

