

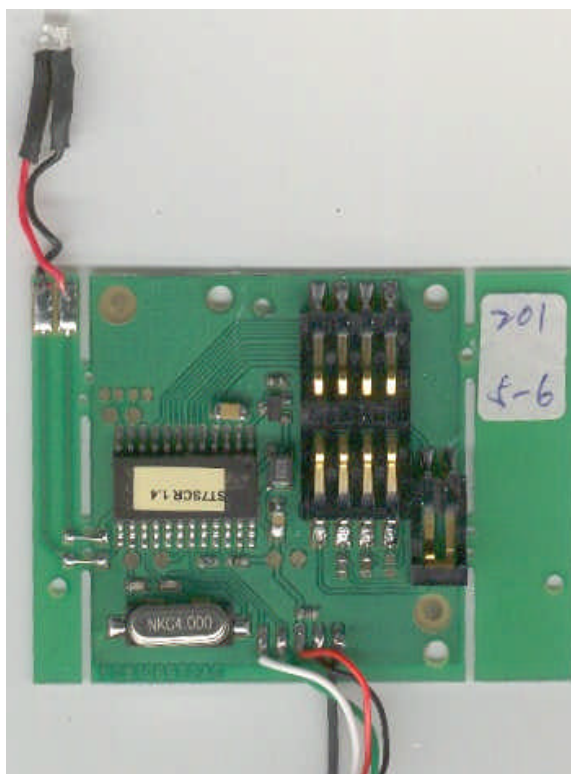
1 INTERNAL PHOTOS OF TESTED EUT (GEMPC433-SL7)



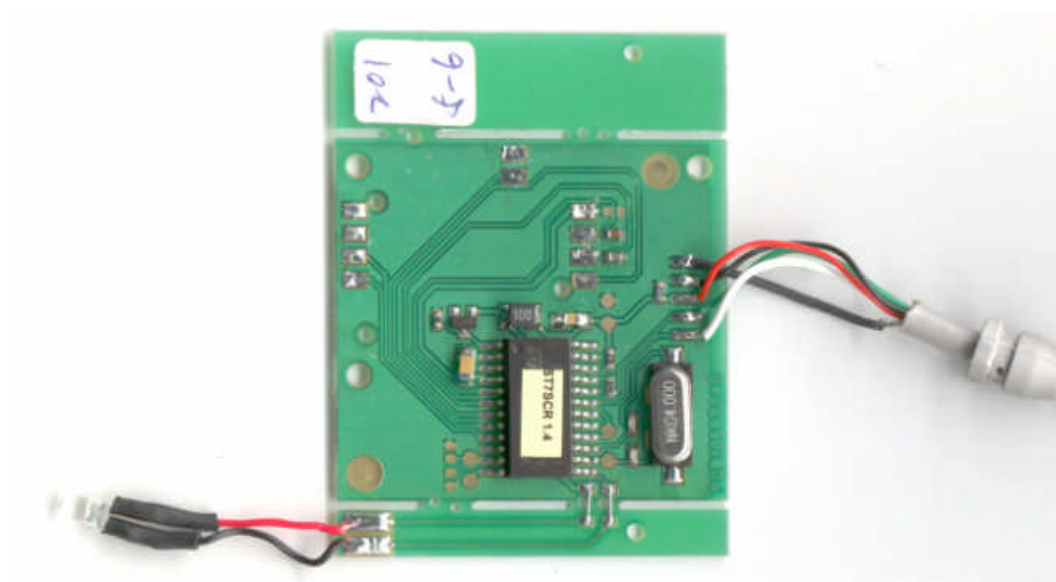
Internal view, Box opened



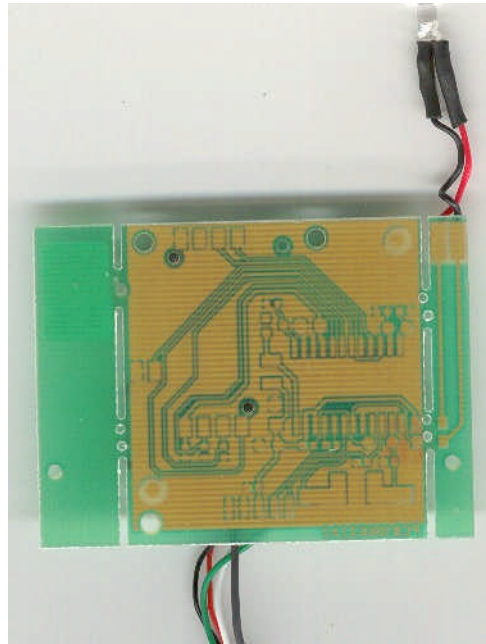
**Internal view, Box opened
Without internal board**



Internal board, Component side

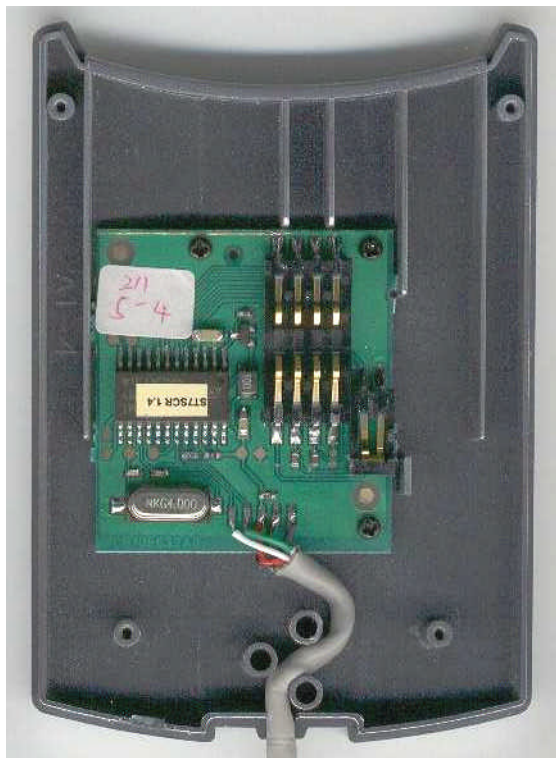


**Internal board, Component side,
smart card connector removed
(Component and copper on the same face, single layer)**



**Internal board, Foil side
(No copper on this side)**

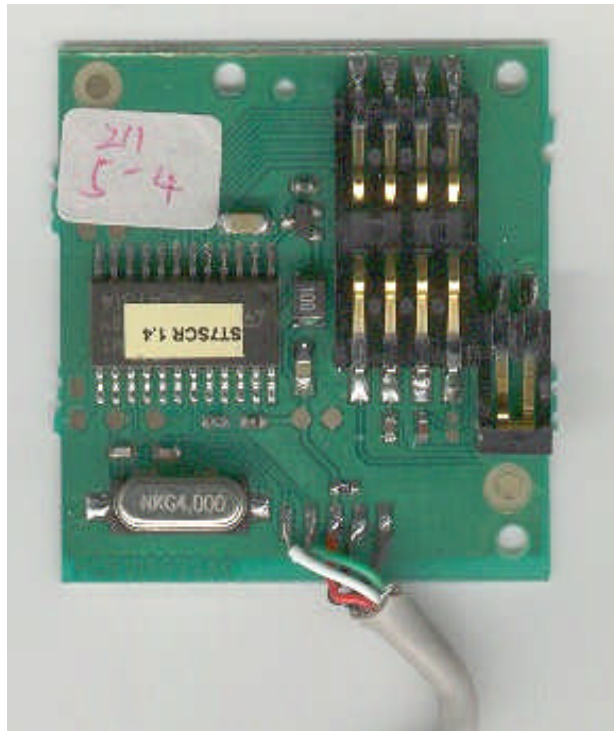
2 INTERNAL PHOTOS OF TESTED EUT (GEMPC433-SW7)



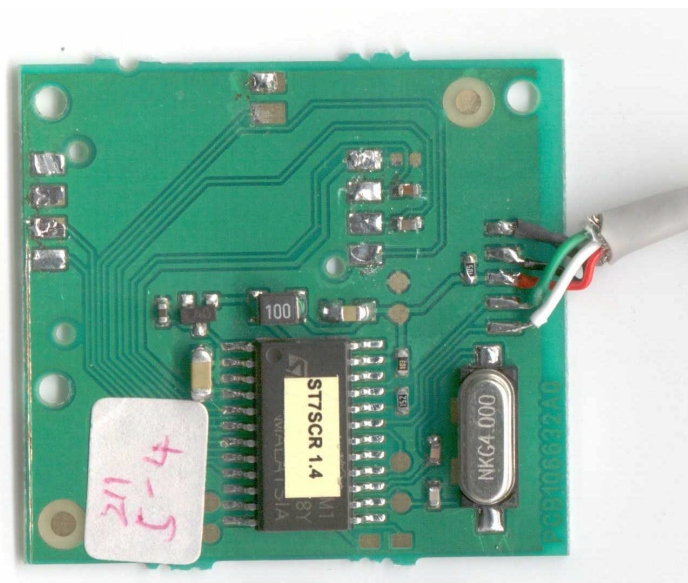
Internal view, Box opened



**Internal view, Box opened
Without internal board**

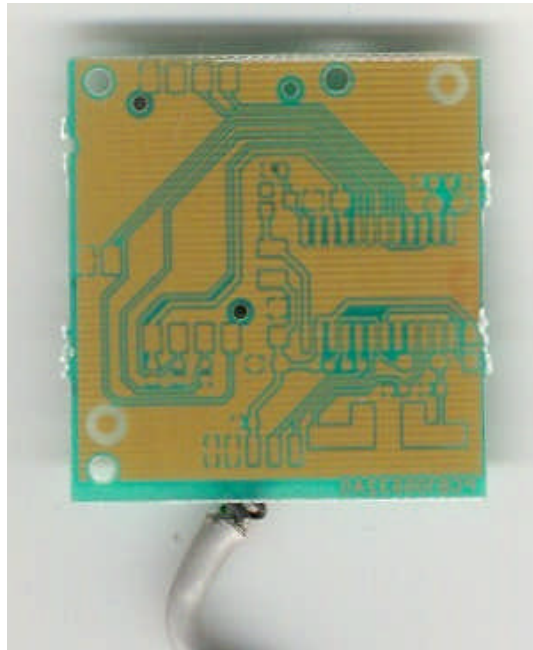


Internal board, Component side



**Internal board, Component side,
smart card connector removed
(Component and copper on the same face, single layer)**

Remark: PCB of the GemPC433-SW7 is the same than the GemPC433-SL7 (Edges are cut and the led is removed)



**Internal board, Foil side
(No copper on this side)**

3 PHOTOS OF THE SMART CARD

