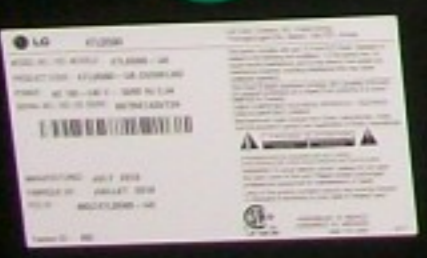





Label Sample & Location



 **LG** 32LD400

LG Twin Towers, 20, Yoido-Dong,  
Youngdungpo-Gu, Seoul, 150-721, Korea.

MODEL NO. / NO. MODELE : 32LD400-UA

PRODUCT CODE : 32LD400-UA.CUSWLHO

POWER : AC 100-240 V~ 50/60 Hz 1.2 A

SERIAL NO. / NO. DE SERIE : 007RKLR1U420



This device complies with part 15 of the FCC Rules. Operation is subject to the following two conditions : (1) this device may not cause harmful interference, and (2) this device must accept any interference received, including interference that may cause undesired operation.

This Class B digital apparatus complies with Canadian ICES-003. Cet appareil numérique de la classe B est conforme à la norme NMB-003 du Canada.

CABLE COMPATIBLE TELEVISION APPARATUS - TÉLÉVISION CÂBLOCOMPATIBLE, CANADA.

Manufactured under license from Dolby Laboratories. Dolby and the double-D symbol are trademarks of Dolby Laboratories.



WARNING: SHOCK HAZARD-DO NOT OPEN  
AVIS: RISQUE DE CHOC ELECTRIQUE-NE PAS OUVRIR

WARNING: To avoid electric shock, please do not open the back cover of this unit. Please contact authorized professional personnel for maintenance or repair.

Lamp of this product contains mercury and must be recycled or disposed of according to local, state or Federal Laws.

MANUFACTURED : JUNE 2010

FABRIQUE EN : JUIN 2010

FCC ID : MDZ32LD400-UA




ASSEMBLED IN MEXICO  
ASSEMBLE AU MEXIQUE  
1936-1101-3400


Factory ID: RD

**32LD400**


32LD400-UA.CUSWLHO WO:07E00633-TV-1



S/NO: 007RKJU1Q980



579210071Q980USWLHO




7 19192 57921 7

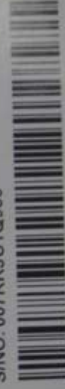
Assembled in Mexico /Assemblé au Mexique /Собрано в Мексике

**32LD400**


32LD400-UA.CUSWLHO WO:07E00633-TV-1



S/NO: 007RKJU1Q980



579210071Q980USWLHO



7 19192 57921 7

**(R)**

PRODUCT CODE: 32LD400-UA.CUSWLHO

SERIAL NO.: 007RKJU1Q980

