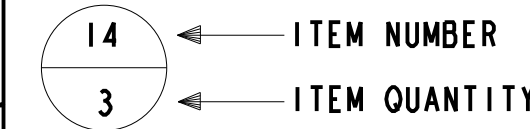


COPYRIGHT © 2013 DIGI INTERNATIONAL,
UNPUBLISHED WORK - ALL RIGHTS RESERVED

BALLOON DESIGNATION SYMBOL

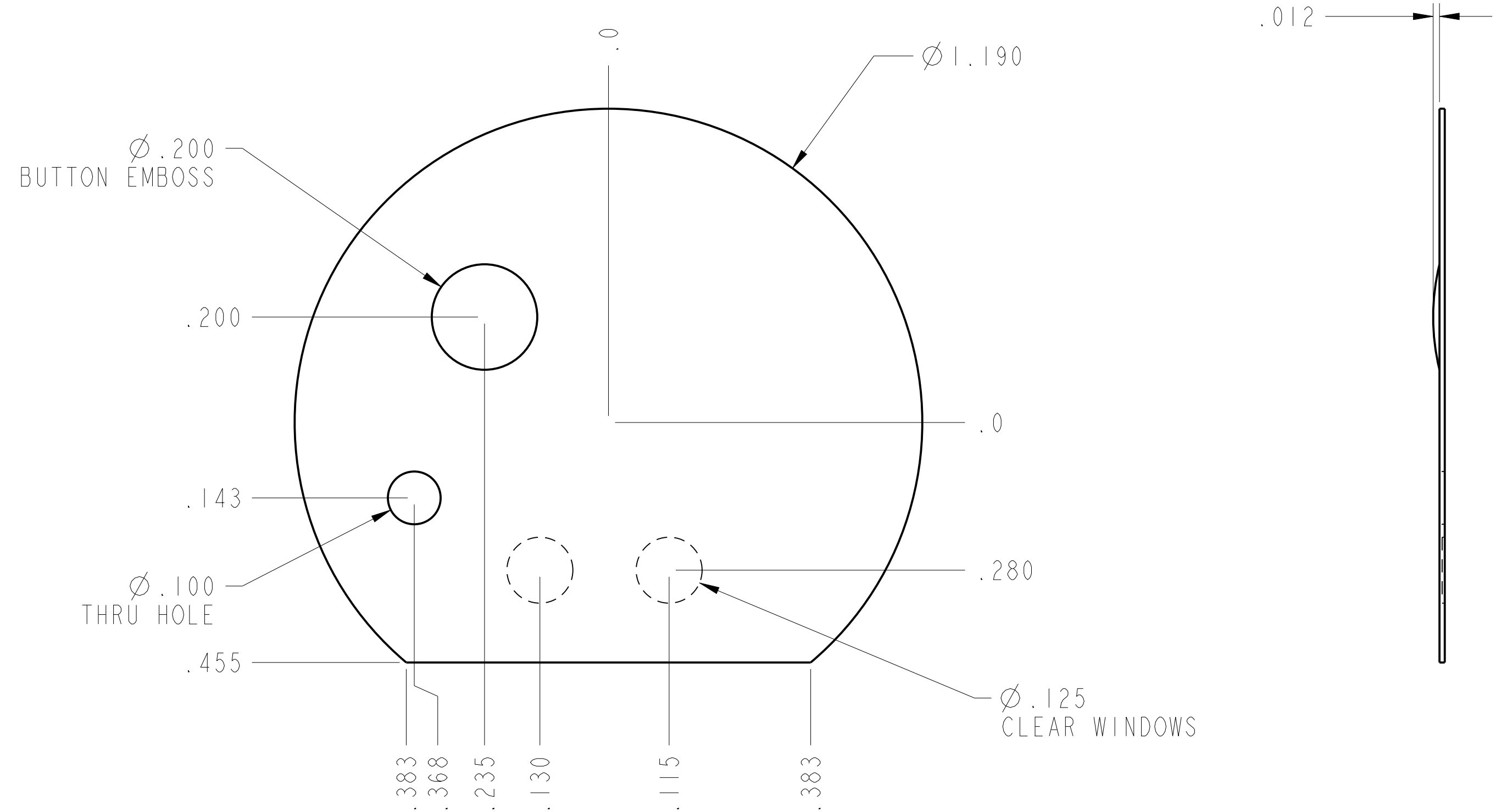


THIS DOCUMENT CONTAINS PROPRIETARY INFORMATION AND, EXCEPT WITH WRITTEN PERMISSION OF DIGI, SUCH INFORMATION SHALL NOT BE PUBLISHED OR DISCLOSED TO OTHERS, OR USED FOR ANY PURPOSE AND THE DOCUMENT SHALL NOT BE COPIED IN WHOLE OR IN PART

REVISION HISTORY				
REV	ECO	DESCRIPTION	DATE	DRW/CHK
B		INITIAL RELEASE NPRO002784	03/01/13	TJM/MJL
C	004710	UPDATE NOTES	9/25/13	TJM/MJL

NOTES: UNLESS OTHERWISE SPECIFIED

- MATERIAL: .010" THK LEXAN HP92W.
- ADHESIVE: 3M TYPE #350 - 9482PC.
- REFER TO MASTER SILK-SCREEN ARTWORK FOR CURRENT REVISION LEVEL. ARTWORK WILL BE SUPPLIED UPON REQUEST. ARTWORK P/N: SEE TABLE.
- COLORS USED FOR THIS LABEL MUST MATCH DIGI INTERNATIONAL SPECIFICATIONS. MUST BE SCREEN PRINTED USING UV INKS ONLY. OPACITY LEVEL MUST BE 100%.
- ADD DIGI P/N, REVISION, DATE CODE, AND VENDOR LOGO USING PERMANENT INK OR A LABEL (CONTRASTING IN COLOR) TO THE PERIMETER AREA OF THE SHEET OR TO THE OPTIONAL BACKING RELEASE TAB.
- OPTIONAL BACKING RELEASE TAB (IF USED): SCORE MATERIAL AND ADHESIVE IN AREA SHOWN FOR BACKING RELEASE TAB. DO NOT CUT THROUGH PROTECTIVE BACKING. OTHER FORMS OF BACKING RELEASE MUST BE APPROVED BY DIGI INTERNATIONAL. OPTIONAL BACKING RELEASE TAB HEIGHT AND WIDTH SHALL BE .25 MINIMUM. HEIGHT MAY NOT EXTEND INTO RADIUS.
- ALL MATERIALS USED IN PRODUCTION SHALL BE ROHS COMPLIANT PER 2011/65/EC.



FRONT VIEW
SCALE 5:1

PART NUMBER	PART REVISION	DESCRIPTION	ARTWORK NUMBER	ARTWORK REVISION
64000471-01	C	OVERLAY, WVA	68001582	B

UNLESS OTHERWISE SPECIFIED		DESIGNER/ENGINEER:	DATE:	 11001 BREN ROAD EAST, MINNETONKA, MN 55343 TITLE OVERLAY, WVA
ALL DIMENSIONS AND TOLERANCES ARE IN INCHES AND SHALL BE INTERPRETED PER ASME Y14.5M - 1994.		T. MILLER	01-Mar-13	
DRAWING TOLERANCES ARE AS FOLLOWS:		HW ENGINEER:	DATE:	
FRACTIONS DECIMALS ANGLES ±1/64 .XX±.1 ±1° .XXX±.010		N. CARLSON	01-Mar-13	
THIS DWG AND SPECIFICATION ARE THE PROPERTY OF DIGI INTERNATIONAL AND SHALL NOT BE REPRODUCED OR COPIED WITHOUT THEIR WRITTEN PERMISSION.		MFG/OPS:	DATE:	
		R. OLSEN	01-Mar-13	
		DRAFTER:	DATE:	
		T. MILLER	01-Mar-13	
		PRODUCT MANAGER	DATE:	
		N. HERMAN	01-Mar-13	
SIZE	CAGE CODE	DWG NO	REV	
D	08TP3	64000471-XX	C	
SCALE	DO NOT SCALE DRAWING		SHEET	1 OF 1
1:1				

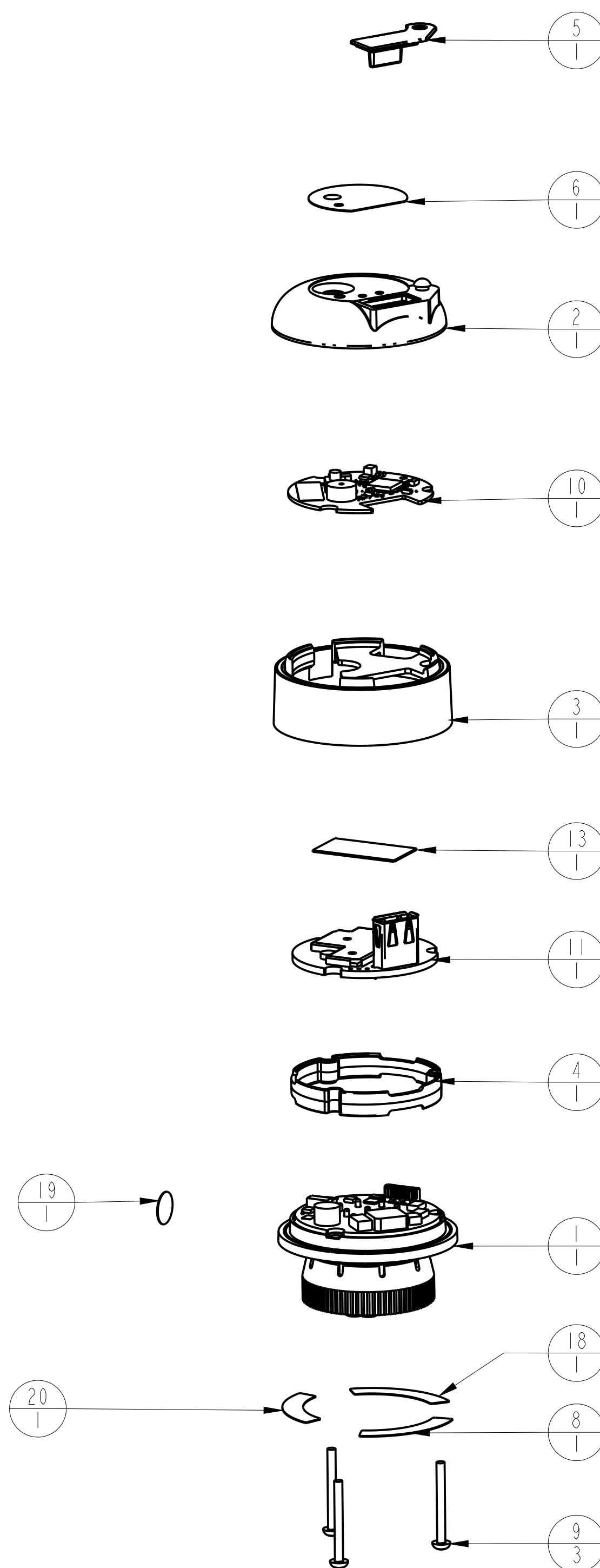
- PRO/ENGINEER GENERATED DRAWING -

REV	ECO	DESCRIPTION	DATE	DRW/CHK
B		INITIAL RELEASE 002767	6/27/13	TJM/MJL
C	004710	UPDATE COMPONENTS	9/25/13	TJM/MJL
D	004869	UPDATE DRAWING; ADD ITEM # 20	11/25/13	TJM/MJL


NOTES: UNLESS OTHERWISE SPECIFIED

- SEE B.O.M. FOR POPULATION OPTIONS.
- ASSEMBLY TORQUE VALUES:
#4-40 SCREWS: 4.0±0.5 IN-LBS
- BAG AND TAG LOOSE HARDWARE FOR SHIPPING OR STORAGE.
- FINISHED PART SHALL BE ROHS COMPLIANT PER 2011/65/EC. THE FACILITY PERFORMING THIS WORK SHALL PERFORM TESTS OR OBTAIN TESTING INFORMATION THAT CONFIRMS COMPLIANCE. TEST RECORDS SHALL BE MADE AVAILABLE UPON REQUEST.

The label location is either number 8,18,20 in the mechanical exploded view diagram.



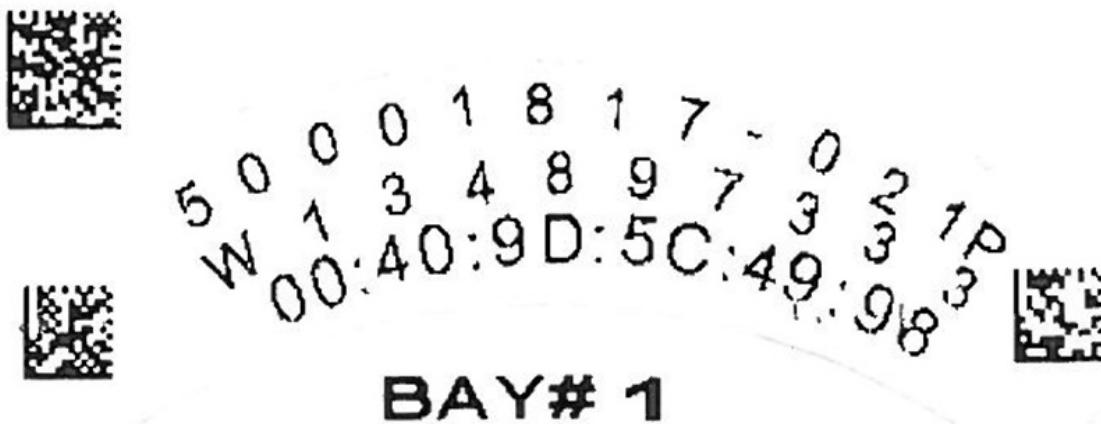
ISOMETRIC VIEW
FOR REFERENCE ONLY
SCALE 4:5

UNLESS OTHERWISE SPECIFIED		DESIGNER/ENGINEER:	DATE:	 DIGI INTERNATIONAL 11001 BREN ROAD EAST, MINNETONKA, MN 55343			
ALL DIMENSIONS AND TOLERANCES ARE IN INCHES AND SHALL BE INTERPRETED PER ASME Y14.5M - 1994.		T. MILLER	27/JUN/13				
DRAWING TOLERANCES ARE AS FOLLOWS:		HW ENGINEER:	DATE:	TITLE			
FRACTIONS DECIMALS ANGLES ±1/64 .XX±.02 ±1° .XXX±.010		N. CARLSON	27/JUN/13				
THIS DWG AND SPECIFICATION ARE THE PROPERTY OF DIGI INTERNATIONAL AND SHALL NOT BE REPRODUCED OR COPIED WITHOUT THEIR WRITTEN PERMISSION.		MFG/OPS:	DATE:	ASSY, WVA			
		R. OLSEN	27/JUN/13				
		DRAFTER:	DATE:	SIZE	CAGE CODE	DWG NO	REV
		T. MILLER	27/JUN/13	D	08TP3	50001817-XX	D
		PRODUCT MANAGER	DATE:	SCALE		SHEET	
		J. CROMER	27/JUN/13	1:1 DO NOT SCALE DRAWING		1 OF 1	

Label showing FCC and IC ID numbers



Label showing Model number 50001917-02



CUTLINE
DOES NOT
PRINT

PMS 355
GREEN

BLACK

WHITE

CLEAR WINDOWS
DO NOT
PRINT

68001582 Rev B
04/22/13



BACKGROUND COLOR - (BLACK) - PANTONE PROCESS
LOGO - (GREEN) - PANTONE PMS 335 C
TEXT - (WHITE) - PANTONE PROCESS

Customer alterations may be charged to the customer and may delay production depending on their complexity.
There will be slight color variances between proofs and actual production printing.
Spot colors or PMS colors will not be well represented by this proof.

_____ / /
Please Print Approver's Name Approver's Signature Date

Proof has my approval - **NO CHANGES NEEDED** | Proof has my approval - **WITH INDICATED CHANGES**