

APPENDIX**11. Photographs of Test Setup**

Fig.1 Photograph of the SAR measurement system

Photograph of the tissue simulant fluid liquid depth (Body)

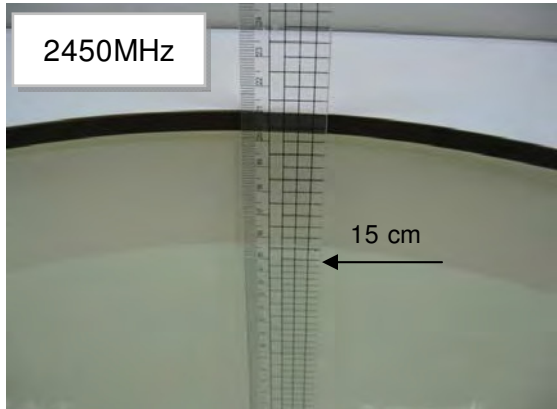


Fig.2.1

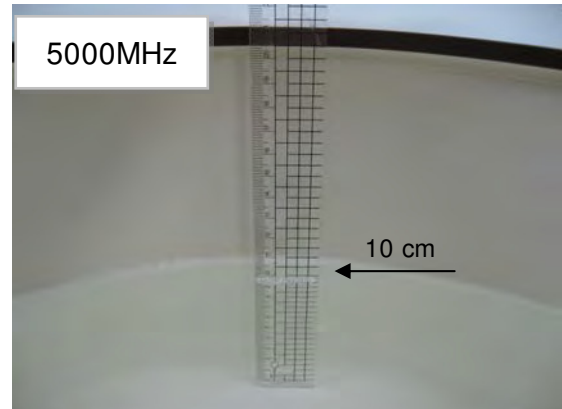


Fig.2.2

Body - distance between flat phantom and EUT is 0 mm



Fig.3 EUT Top side to flat phantom

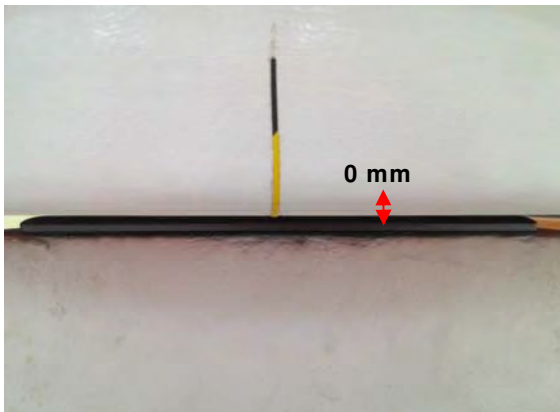


Fig.4 EUT Back side to flat phantom

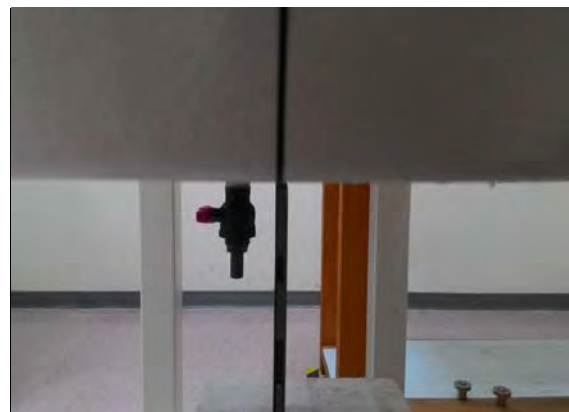
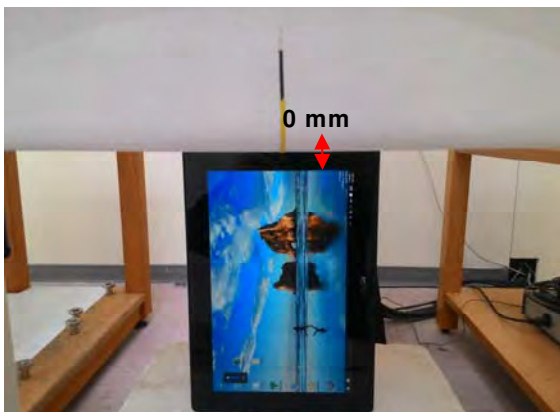


Fig.5 EUT Right side to flat phantom

12. Photographs of the EUT



Fig.6 Front view of EUT



Fig.7 Back view of EUT



Fig.8 Antenna position of EUT (Back view)

- End of Report -