



artAnt Telecom Co., Ltd.

6F, No. 12, Li-Hsin Road., Science-Based  
Industrial Park, Hsinchu Taiwan, R.O.C.  
Tel: 886-3-5783188 Fax: 886-3-5783189

# Compal BY27

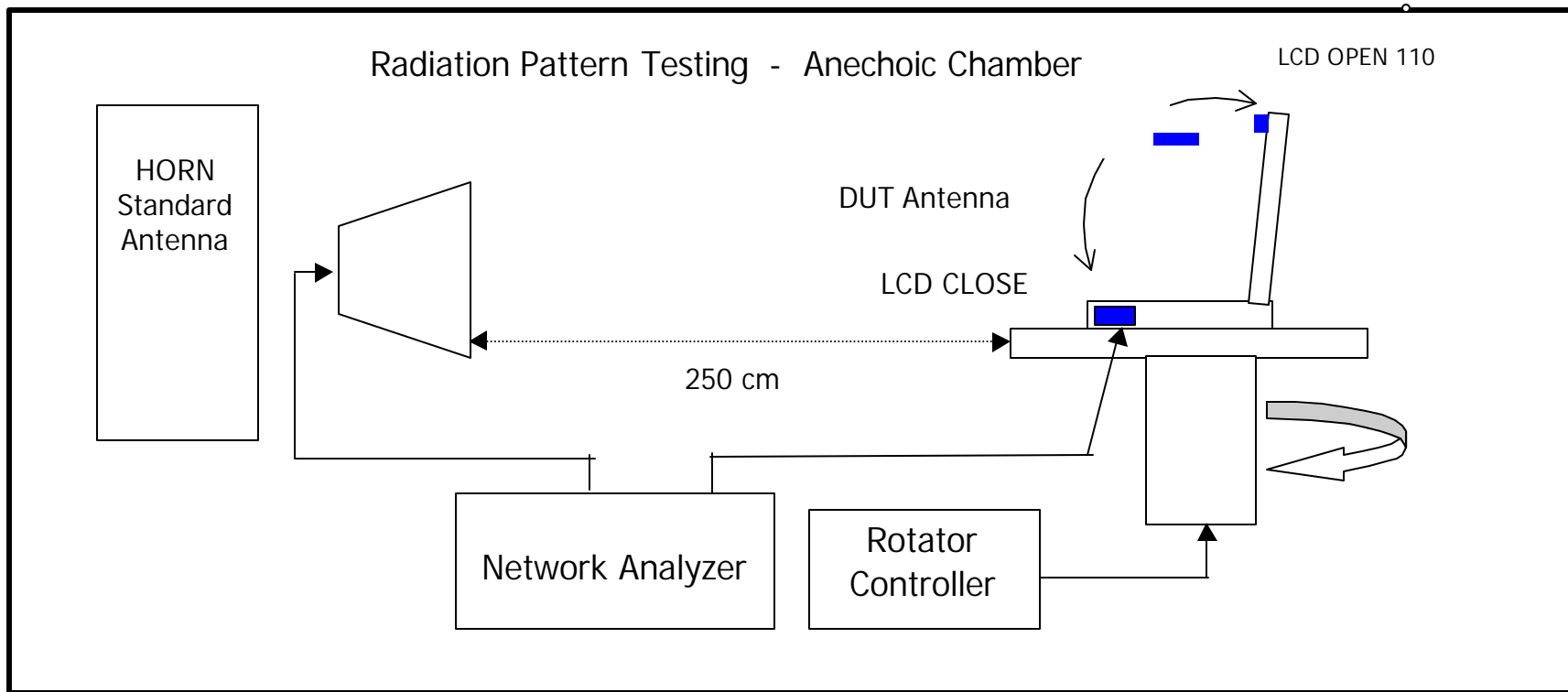
## Antenna Test Report

RD Manager	Supervisor	RD engineer	Sales engineer
Leo	Sigma	Romeo	Lance



## 802.11a.b Antenna Testing Conditions:

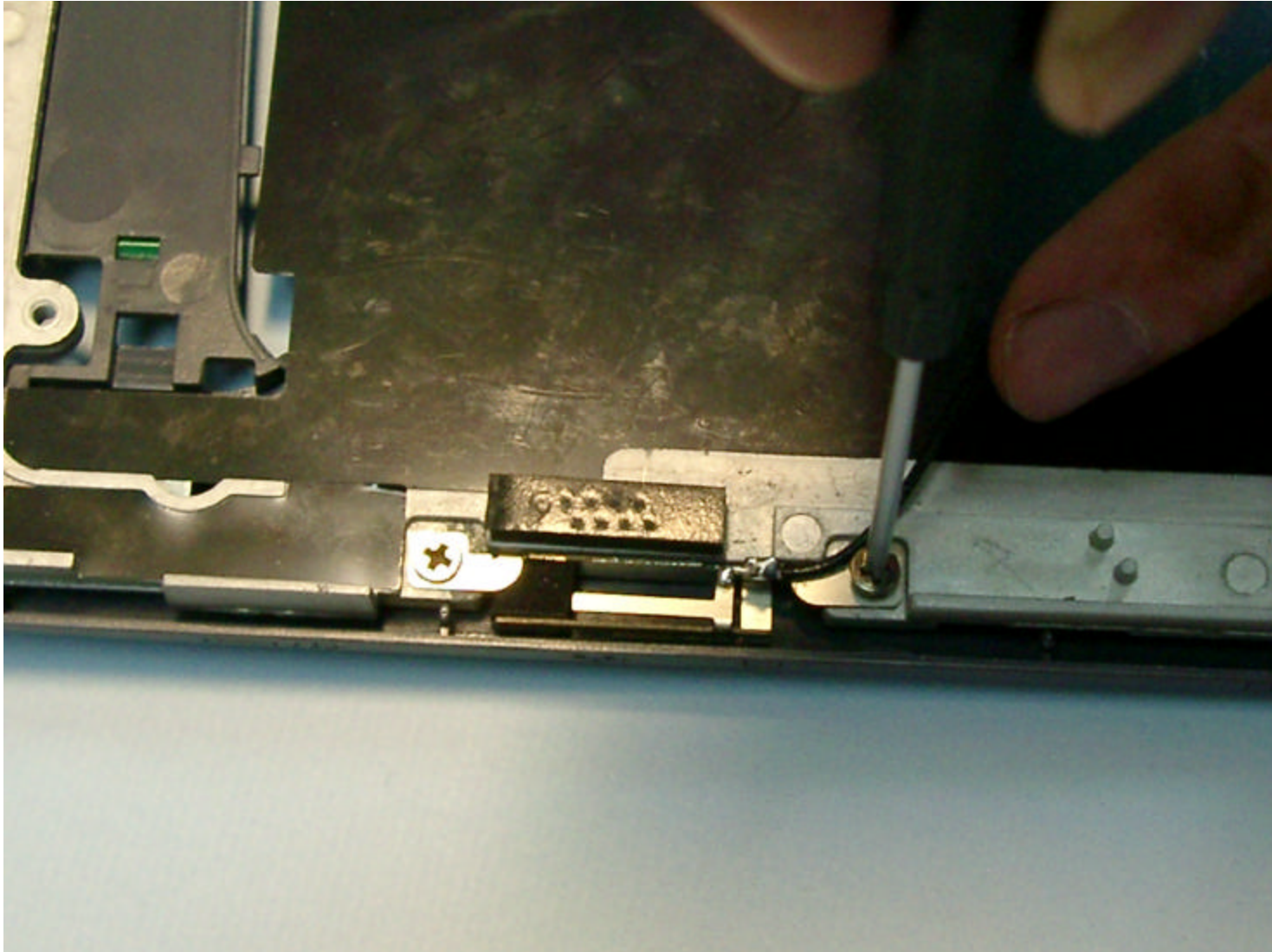
### 1. Testing set up:





SmartAnt Telecom Co., Ltd.

6F, No. 12, Li-Hsin Road., Science-Based  
Industrial Park, Hsinchu Taiwan, R.O.C.  
Tel: 886-3-5783188 Fax: 886-3-5783189





## Test results : Main ANT.

Antenna	Application	Placement	Cable dia. Ø mm	Material	Cable Vendor	Connector Vendor	Connector type	Impedance
BY27	802.11ab	RIGHT	1.13	Metal	Nissei	HIROSE	HRS	50

## SWR

Antenna	Center freg. @MHz	BW @MHz	VSWR		
			2.4GHz	2.45GHz	2.5GHz
Main	2450	100	1.818	1.666	1.584
			5.15GHz	5.25GHz	5.35GHz
	5250	200	1.899	1.187	1.192



## Peak Gain and Average Gain



SmartAnt Telecom Co., Ltd.

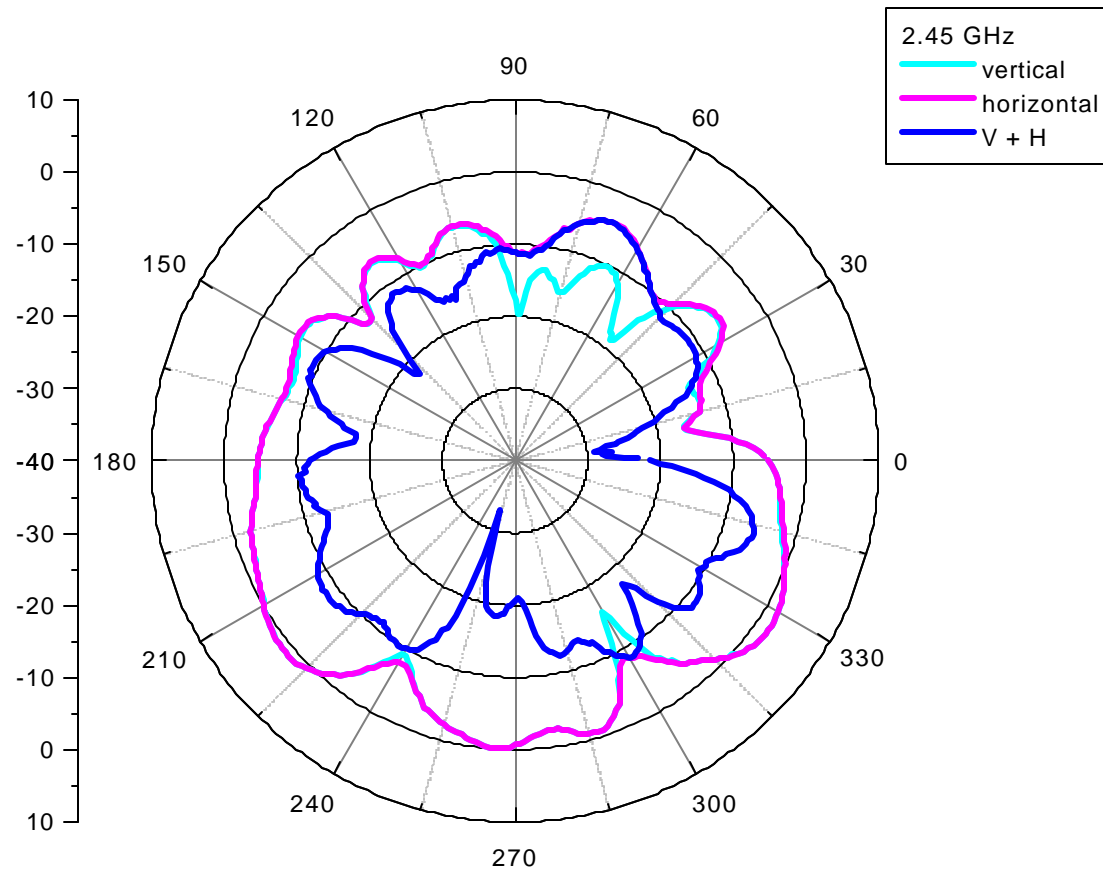
6F, No. 12, Li-Hsin Road., Science-Based  
Industrial Park, Hsinchu Taiwan, R.O.C.  
Tel: 886-3-5783188 Fax: 886-3-5783189

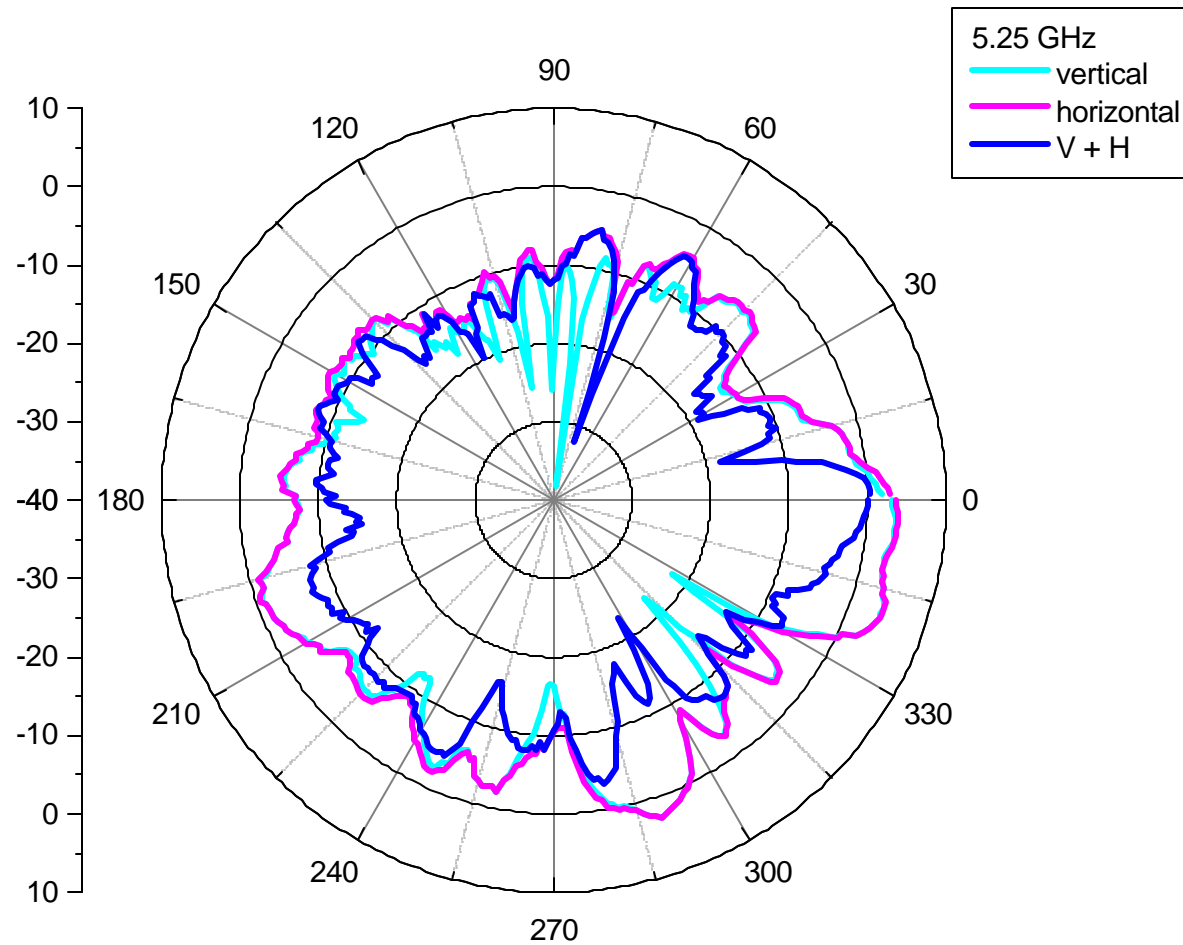
	<b>2.4GHz</b>	<b>2.45GHz</b>	<b>2.5GHz</b>	<b>5.15GHz</b>	<b>5.25GHz</b>	<b>5.35GHz</b>
<b>Peak gain(dBi)</b>	<b>1.2669</b>	<b>2.0663</b>	<b>2.8901</b>	<b>2.6022</b>	<b>2.2071</b>	<b>2.95</b>
<b>Average Gain(dBi)</b>	<b>-4.3046</b>	<b>-3.5179</b>	<b>-2.7304</b>	<b>-2.4523</b>	<b>-3.2355</b>	<b>-1.9293</b>



SmartAnt Telecom Co., Ltd.

6F, No. 12, Li-Hsin Road., Science-Based Industrial Park, Hsinchu Taiwan, R.O.C.  
Tel: 886-3-5783188 Fax: 886-3-5783189

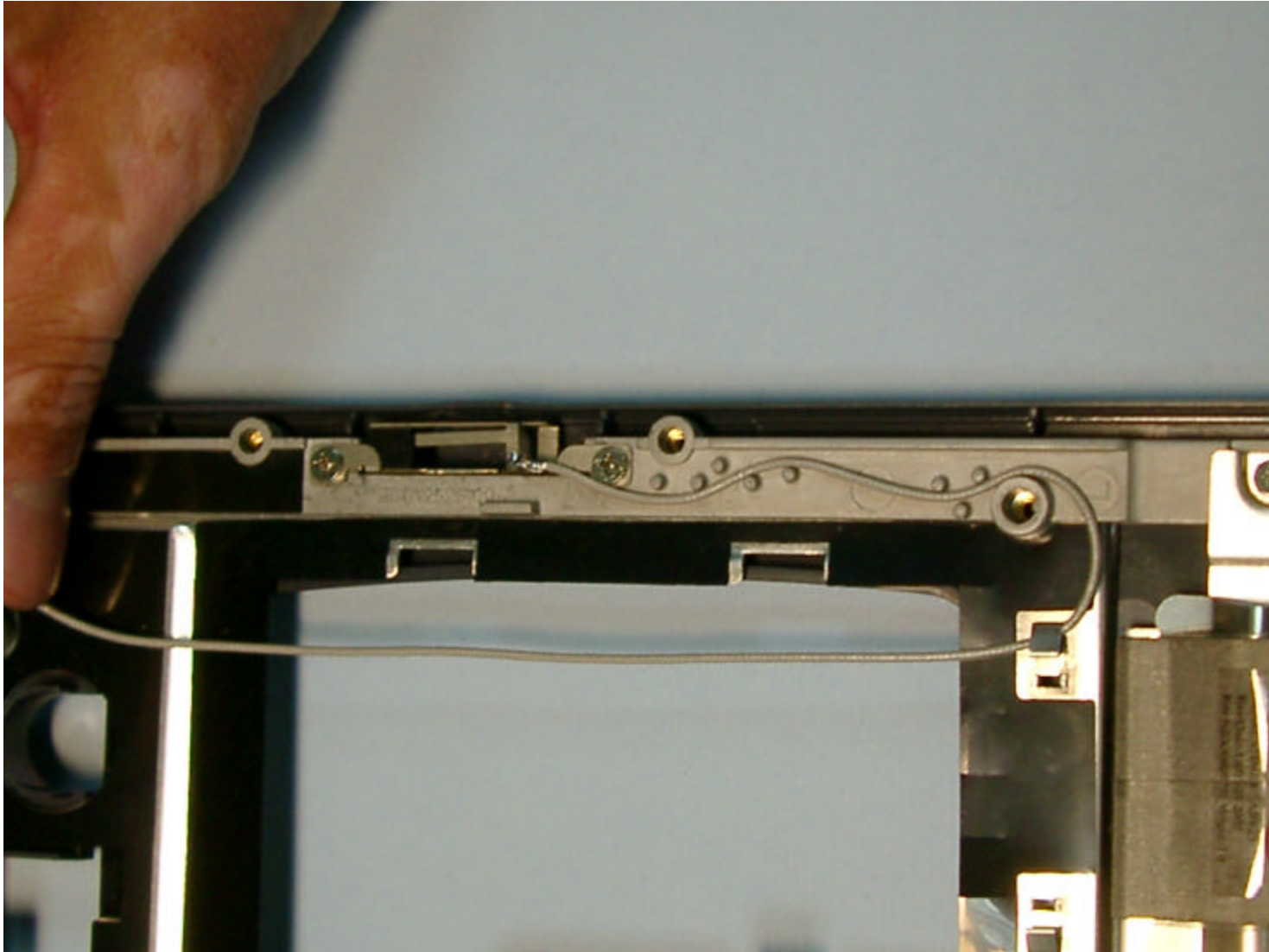






SmartAnt Telecom Co., Ltd.

6F, No. 12, Li-Hsin Road., Science-Based  
Industrial Park, Hsinchu Taiwan, R.O.C.  
Tel: 886-3-5783188 Fax: 886-3-5783189





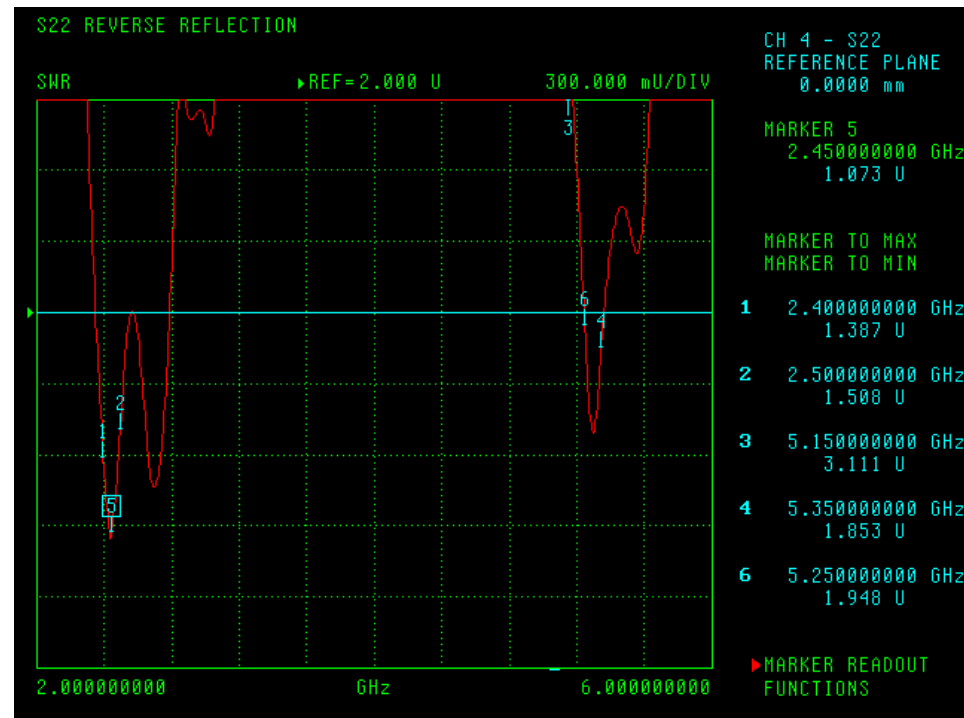


## Test results : Sec. ANT.

Antenna	Application	Placement	Cable dia. Ø mm	Material	Cable Vendor	Connector Vendor	Connector type	Impedance
3y27	802.11ab	LEFT	1.13	Metal	Nissei	HIROSE	HRS	50

## VSWR

Antenna	Center freg. @MHz	BW @MHz	VSWR		
			2.4GHz	2.45GHz	2.5GHz
Sec.	2450	100	1.387	1.073	1.500
			5.15GHz	5.25GHz	5.35GHz
	5250	200	3.111	1.948	1.853



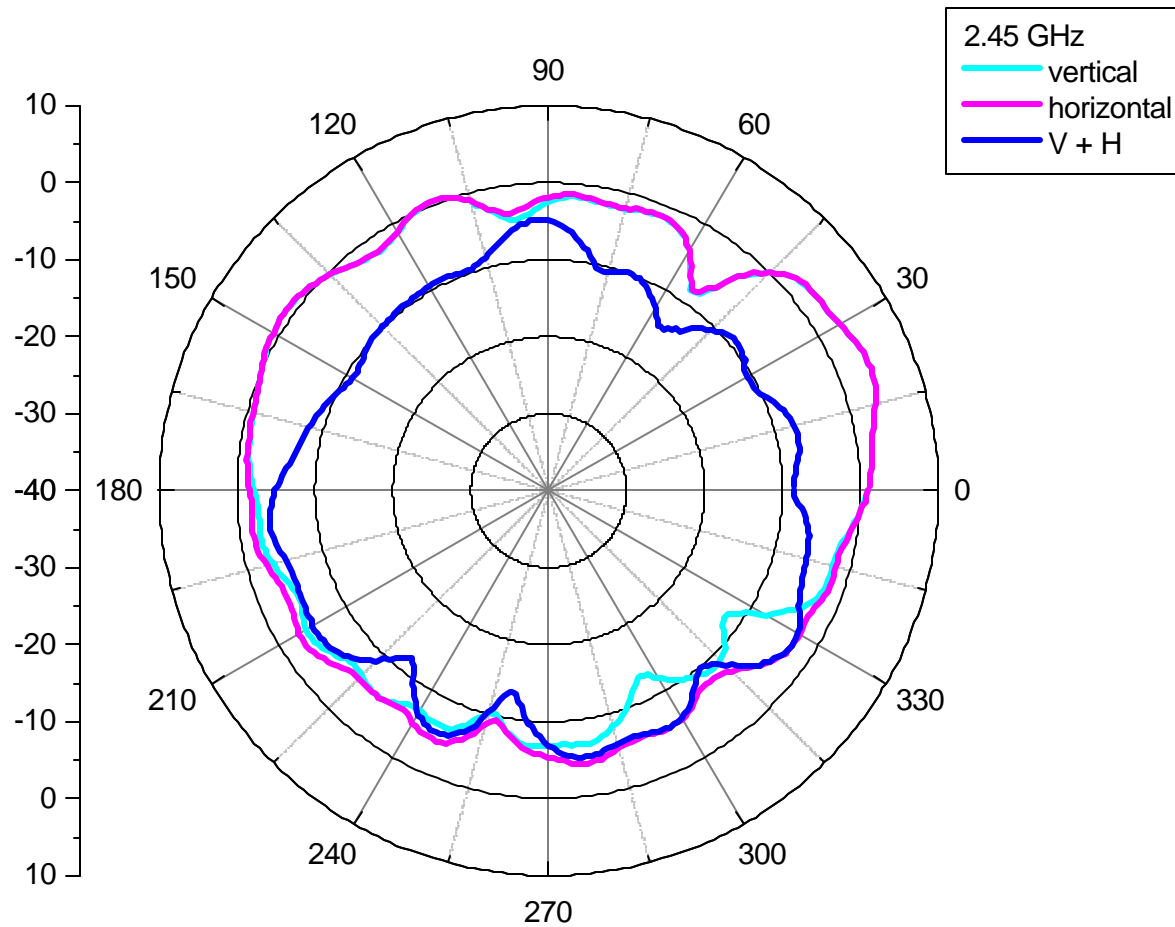
## Peak Gain and Average Gain

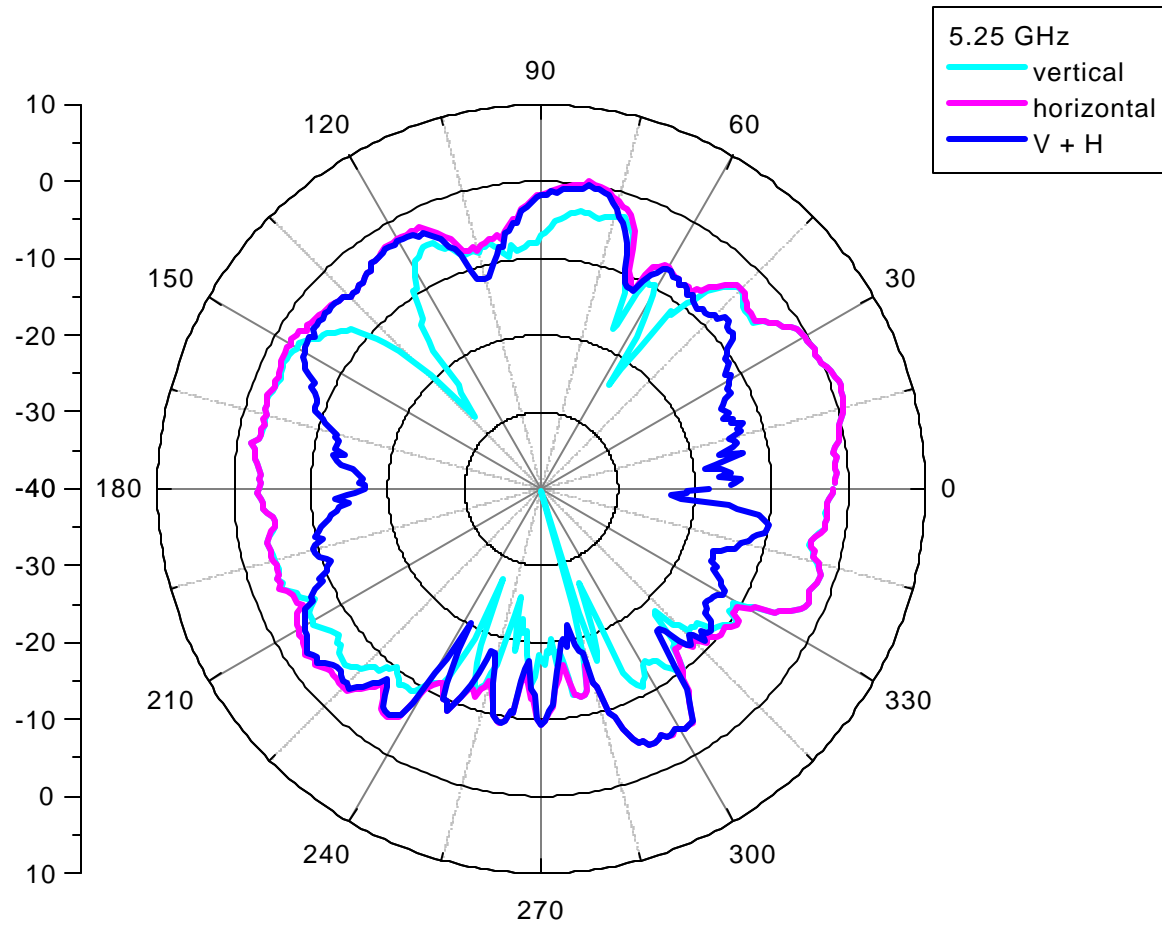


SmartAnt Telecom Co., Ltd.

6F, No. 12, Li-Hsin Road., Science-Based  
Industrial Park, Hsinchu Taiwan, R.O.C.  
Tel: 886-3-5783188 Fax: 886-3-5783189

	<b>2.4GHz</b>	<b>2.45GHz</b>	<b>2.5GHz</b>	<b>5.15GHz</b>	<b>5.25GHz</b>	<b>5.35GHz</b>
<b>Peak gain(dBi)</b>	<b>1.0762</b>	<b>1.2872</b>	<b>1.349</b>	<b>1.3031</b>	<b>1.1985</b>	<b>2.1777</b>
<b>Average Gain(dBi)</b>	<b>-2.136</b>	<b>-2.3424</b>	<b>-2.9396</b>	<b>-3.7837</b>	<b>-3.8182</b>	<b>-1.9663</b>





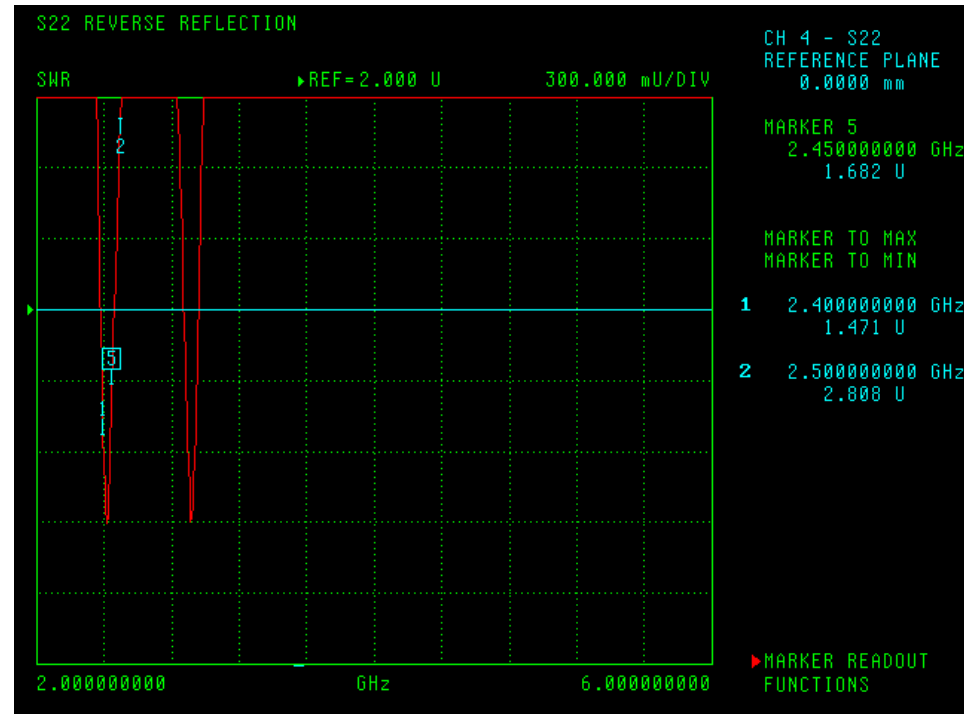
Test results : **BLUETOOTH**



Antenna	Application	Placement	Cable dia. Ø mm	Material	Cable Vendor	Connector Vendor	Connector type	Impedance
3y27	bluetooth	hinge	1.13	Metal	Nissei	HIROSE	HRS	50

VSWR

Antenna	Center freg. @MHz	BW @MHz	VSWR		
			2.4GHz	2.45GHz	2.5GHz
BT	2450	100	1.471	1.682	2.808



## Peak Gain and Average Gain



SmartAnt Telecom Co., Ltd.

6F, No. 12, Li-Hsin Road., Science-Based  
Industrial Park, Hsinchu Taiwan, R.O.C.  
Tel: 886-3-5783188 Fax: 886-3-5783189

	<b>2.4GHz</b>	<b>2.45GHz</b>	<b>2.5GHz</b>
<b>Peak gain(dBi)</b>	<b>-1.7997</b>	<b>-0.6418</b>	<b>-2.5316</b>
<b>Average Gain(dBi)</b>	<b>-6.325</b>	<b>-5.8838</b>	<b>-6.764</b>

