

# **U S E R ' S M A N U A L**

## **T60H563**

### **MiniPCI WLAN/Bluetooth Combo Module**

#### **Ambit Microsystems Corporation**

5F-1, 5 Hsin-An Rd., Hsinchu Science-Based Industrial Park, Hsinchu, Taiwan, R.O.C.  
TEL: 886-3-5784975, FAX: 886-3-5782924, Internet: <http://www.ambit.com.tw>

## Contents

<b>SECTION ONE: INTRODUCTION.....</b>	<b>1</b>
1.1 FEATURES .....	1
1.1.1 WLAN HARDWARE SPECIFICATION .....	1
1.1.2 BLUETOOTH HARDWARE SPECIFICATIONS.....	1
1.1.3 SOFTWARE SPECIFICATION.....	2
1.2 PACKAGE CONTENTS.....	2
<b>SECTION TWO: BLUETOOTH INSTALLATION .....</b>	<b>3</b>
2.1 DRIVER INSTALLATION .....	3
<b>SECTION THREE: WIRELESS LAN INSTALLATION .....</b>	<b>8</b>
3-1 SYSTEM REQUIREMENTS .....	8
3-2 INSTALLATION AND UNINSTALL PROCESS.....	8
<b>SECTION 4 WIRELESS UTILITY AND CONFIGURATION .....</b>	<b>14</b>
4-1 WINDOWS 98/ME/2000 WIRELESS UTILITY .....	14
4-2 WINDOWS XP WIRELESS UTILITY .....	17
<b>APPENDIX A GLOSSARY .....</b>	<b>24</b>

The information contained in this manual has been verified at the time of this manual printing. The manufacturer reserves the right to make any changes and improvements in the product described in this manual at any time and without notice.

All registered trademarks are the property of their respective owners.

## Section One: Introduction

AMBIT MINIPCI 3B WLAN/Bluetooth Combo Module complied with IEEE 802.11b 11Mbps Standard. The WLAN/Bluetooth application is implemented via a Intersil Prism 2.5 RF circuit. This RF circuit is developed for Wireless LAN application complied with IEEE 802.11b 11Mbps standard in ISM band. It can be used to provide a variety of low-cost wireless network interfaces to build your wireless connection via simply SMT procedure to speed the time to market. Three Intersil's chips are implemented including ISL3984, ISL3685, HFA3783. With Bluetooth technology, the Bluetooth part can achieve internet connection rates up to 721 kbits/s. The Notebook communicate with Bluetooth by MiniPCI Interface Reserve pin. The WLAN/Bluetooth combo card mechanical complies with MINIPCI 3B form factor.

### 1.1 Features

#### 1.1.1 WLAN Hardware Specification

<b>Form Factor &amp; Bus Interface</b>	MiniPCI Type IIIB, compliant to MiniPCI 1.0
<b>Wireless LAN Compliance</b>	IEEE 802.11b
<b>Radio Technology</b>	Direct Sequence Spread Spectrum
<b>Operating Frequency</b>	2.4 ~ 2.4835GHz ISM band
<b>Modulation Schemes</b>	DQPSK, DBPSK and CCK
<b>Channel Numbers</b>	IEEE 802.11b compliant 1 ~ 11 channels for United States
<b>WLAN Data Rate</b>	11Mbps with fall back rates of 5.5, 2, and 1Mbps
<b>Spreading</b>	11-chip Barker Sequence
<b>Media Access Protocol</b>	CSMA/CA with ACK
<b>Transmitter Output Power</b>	Typ. 15 dBm ( <b>ERP</b> )
<b>Receiver Sensitivity</b>	Typ. -82 dBm for 11Mbps @ 8% PER Typ. -85 dBm for 1Mbps @ 8% PER
<b>Antenna Type</b>	Integrated diversity switch with Hirose compliant connectors(U-FL) for connecting dual diversity antennas

#### 1.1.2 Bluetooth Hardware Specifications

<b>Bluetooth Module Chip Set</b>	CSR BlueCore 02
----------------------------------	-----------------

<b>Supply Voltage</b>	2.7V to 3.3V
<b>Power Features</b>	Host wake-up on the module Detach the module from host
<b>Frequency Range</b>	2.400-2.497 GHz
<b>Antenna Load</b>	50 Ohm
<b>Receive Sensitivity</b>	-80 dBm@0.1% BER
<b>Maximum Receiver Signal</b>	-20 dBm
<b>TX Power (ERP)</b>	4 dBm maximum (class 2 and class 3)
<b>RF Power Control Step Size</b>	2 dB
<b>Range</b>	10 meters at 0 dBm TX power (class 2)
<b>Radio</b>	Compliant with Bluetooth standard version 1.1
<b>Pico Net</b>	1 master to 7 slaves
<b>Operating Channels</b>	79 channels of 1 MHz BW
<b>Security</b>	Full support of Bluetooth security provisions including hardware support for full length 128 bit encryption keys.
<b>Host Interface (USB)</b>	USB specification 1.1 compliant

### 1.1.3 Software Specification

<b>OS</b>	- Supports Windows 98SE, ME, 2000, XP
<b>Configuration</b>	- User interface for configuration and status monitoring
<b>WLAN Standard Compliance</b>	- 802.11b,- 802.1X for Windows XP
<b>Bluetooth Standard</b>	- Bluetooth Specification 1.1
<b>Site Survey</b>	- Auto scan to find APs nearby and show signal strength for each channel (for WLAN only)

## 1.2 Package Contents

Make sure you have received the following items in your package:

One Mini-PCI Type IIIB WLAN/Bluetooth Module  
One Phone Cable (Bluetooth)  
User Manual

## Section Two: Bluetooth Installation

The following steps provide instructions for installing Bluetooth.

1. Make sure your MiniPCI WLAN/BT Combo card already insert into the slot.
2. Insert the connector of Antenna cable into the antenna connector of MiniPCI Module .  
The antenna connector assembly need to be performed by well trained engineer to cause antenna connector mismatch then degrade Bluetooth connection performance. Please find your vendor to help this connector assembly.

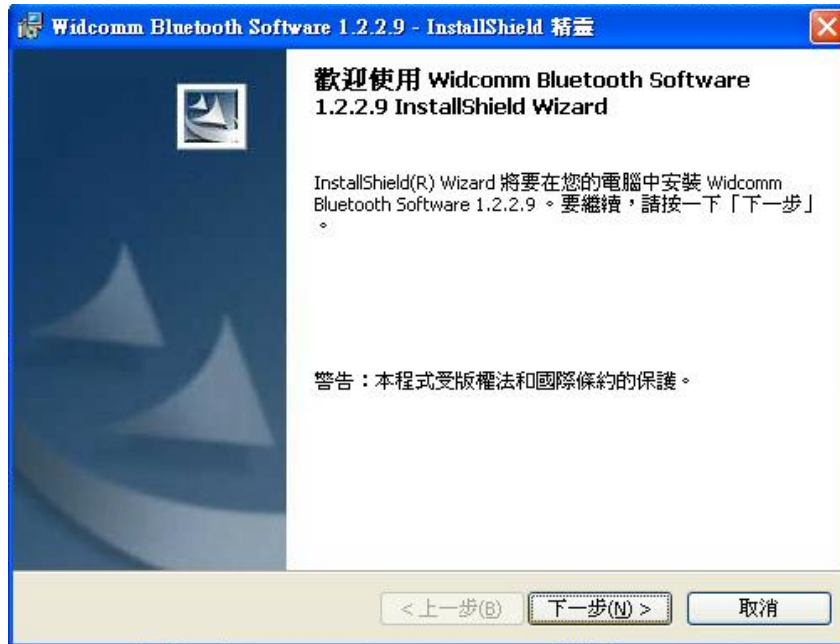
### 2.1 Driver Installation

Your Bluetooth is using the Plug and Play (PnP) capabilities of you computer. PnP is a set of specifications that define the ability for the computer hardware and operating system to automatically configure all compliant devices that are installed, relieving the user of the need to determine which addresses and interrupts to user for each device.

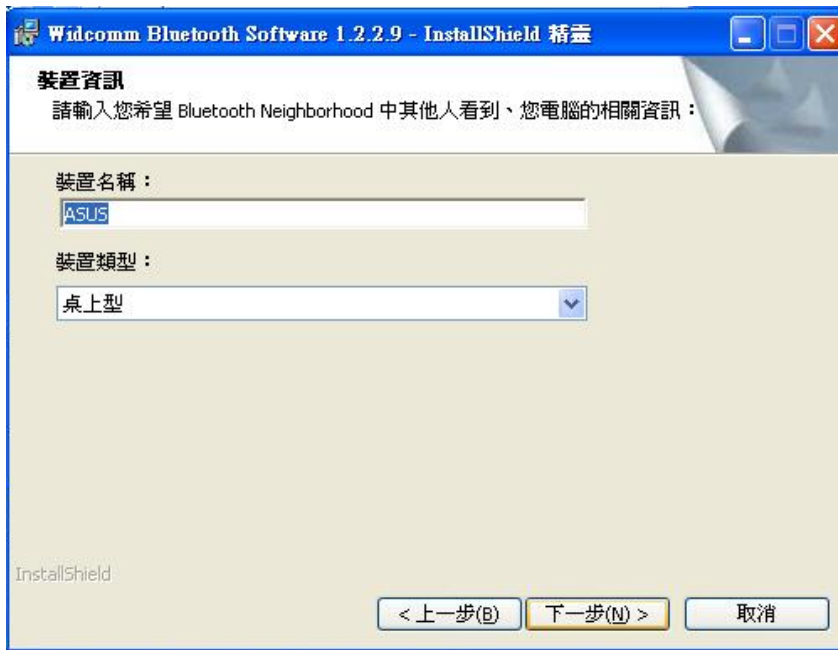
Proceed to the following section.

### Install Bluetooth (Windows 98/2K/ME/XP)

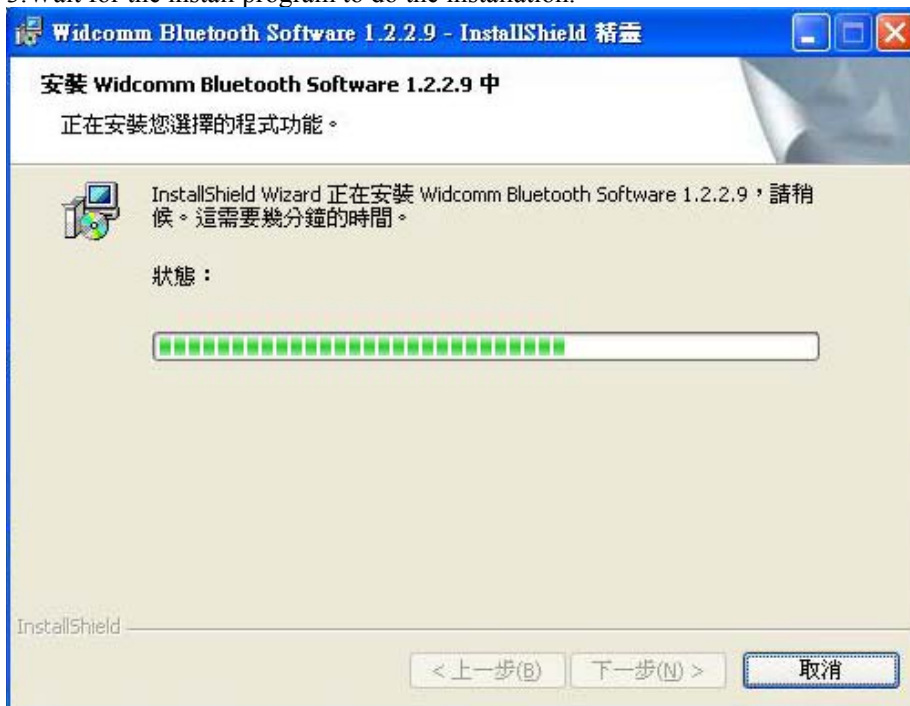
1Execute the program ‘Setup.exe’ in the CD. Windows displays the dialog as below. Press ‘Next’ button to continue.



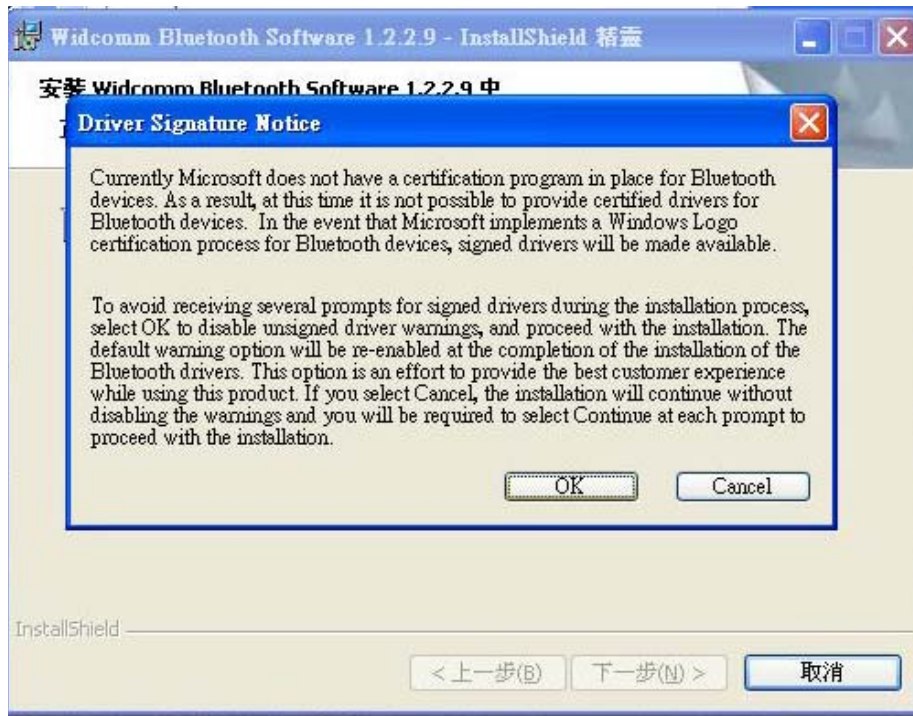
2.Select the “ Device name “ and “Device Type” that you want to Install.



3. Wait for the install program to do the installation.



4. Select “OK” to avoid Microsoft Digital Signature message



5. Congratulations! Bluetooth has been installed successfully.

Please click 'Finish' to go to the next step.



6. Select the Application that you want to use.



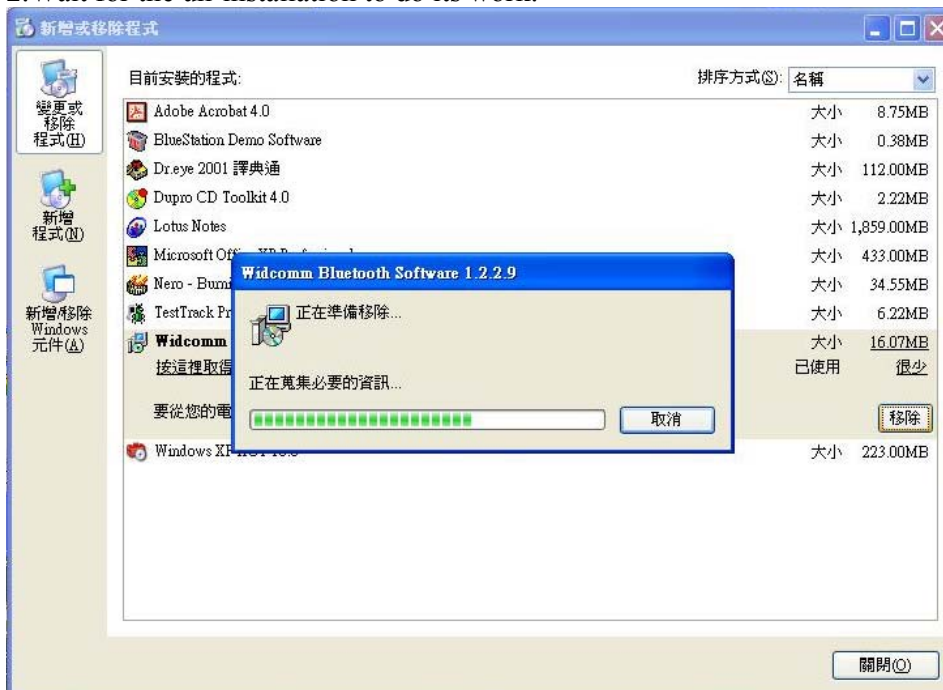


## Uninstall Bluetooth (Windows 98/2K/ME/XP)

One can remove the Bluetooth via the 'Add/Remove Programs' in the 'Control Panel'. Select '**Bluetooth**' and click 'Add/Remove' button, the dialog as below displays.



2. Wait for the un-installation to do its work.



3. Then Complete the un-Installation.

## Section Three: Wireless Lan Installation

### 3-1 System Requirements

In order to install Wireless LAN and use the Wireless LAN/Bluetooth combo card in your notebook computer.

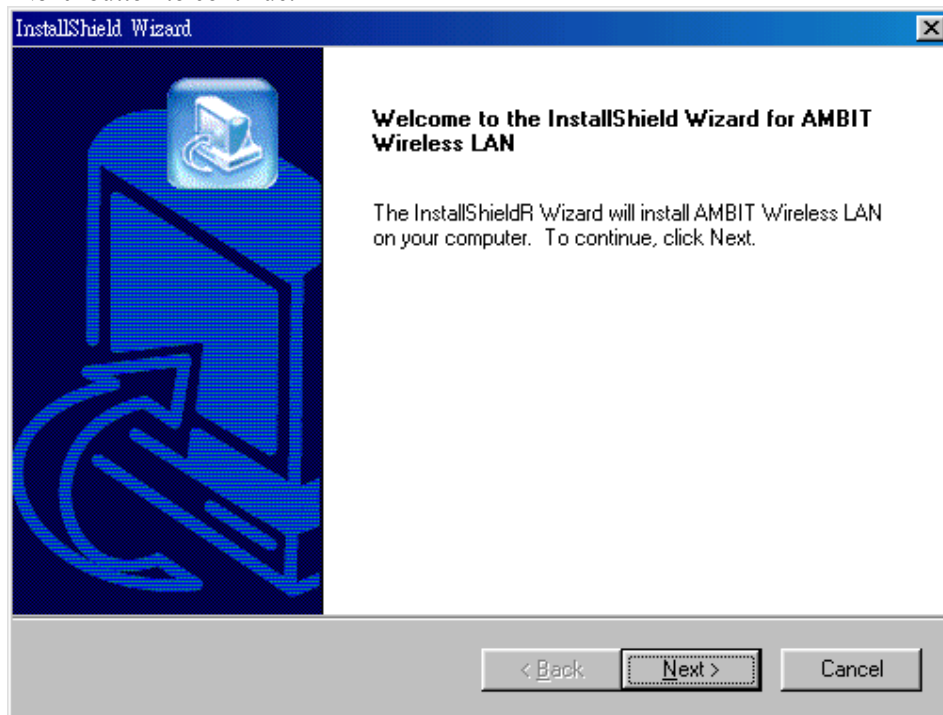
Your notebook system must meet the following requirements:

- A Mini-PCI Type III Slot that already insert in WLAN/BT Combo module
- Windows 98SE,2K,ME,XP Support

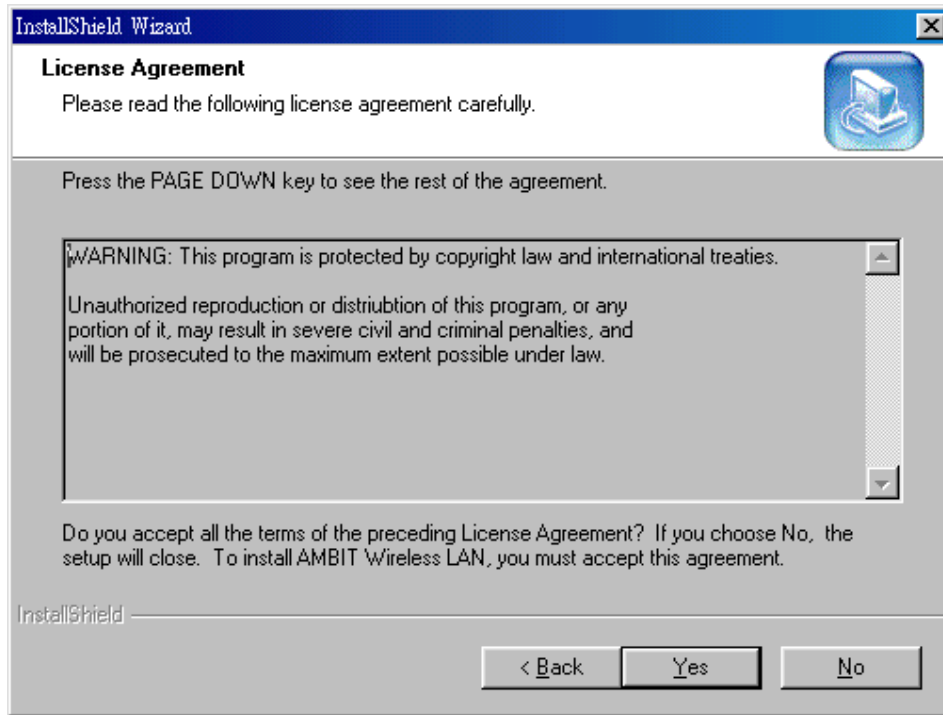
### 3-2 Installation and Uninstall Process

#### Install Wireless LAN (Windows 98/2K/ME/XP)

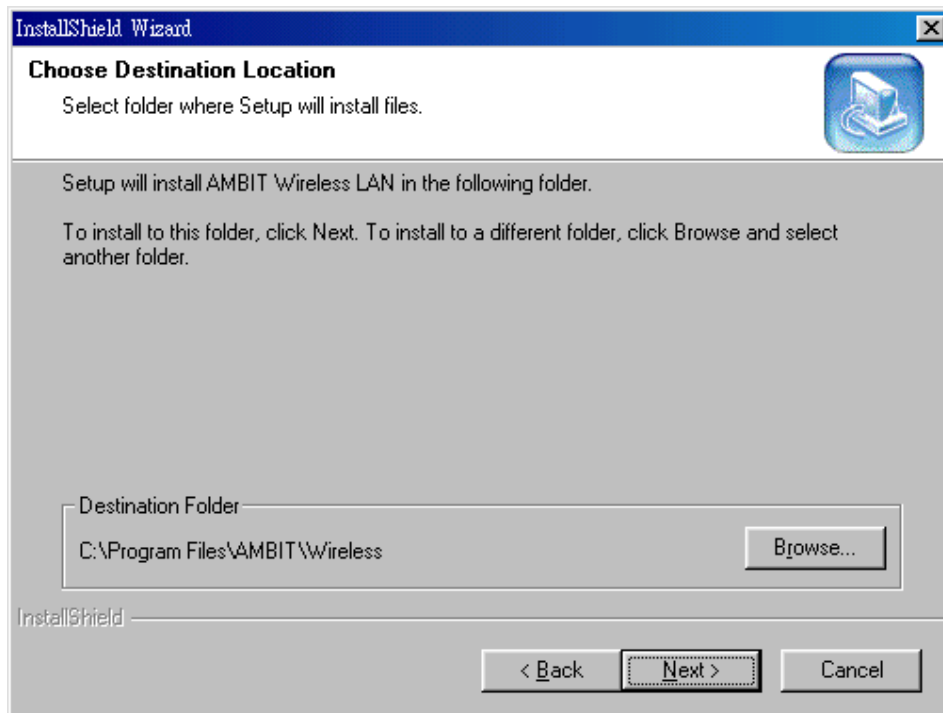
1. Execute the program 'Setup.exe' in the CD. Windows displays the dialog as below. Press 'Next' button to continue.



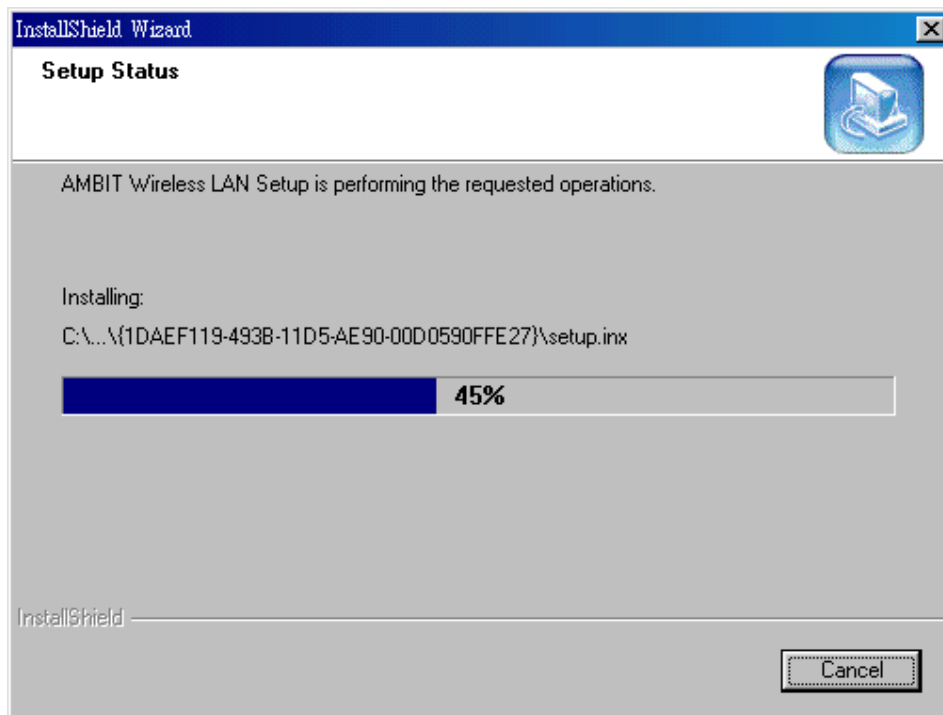
2. It displays a License Agreement dialog. Press 'Next' to continue.



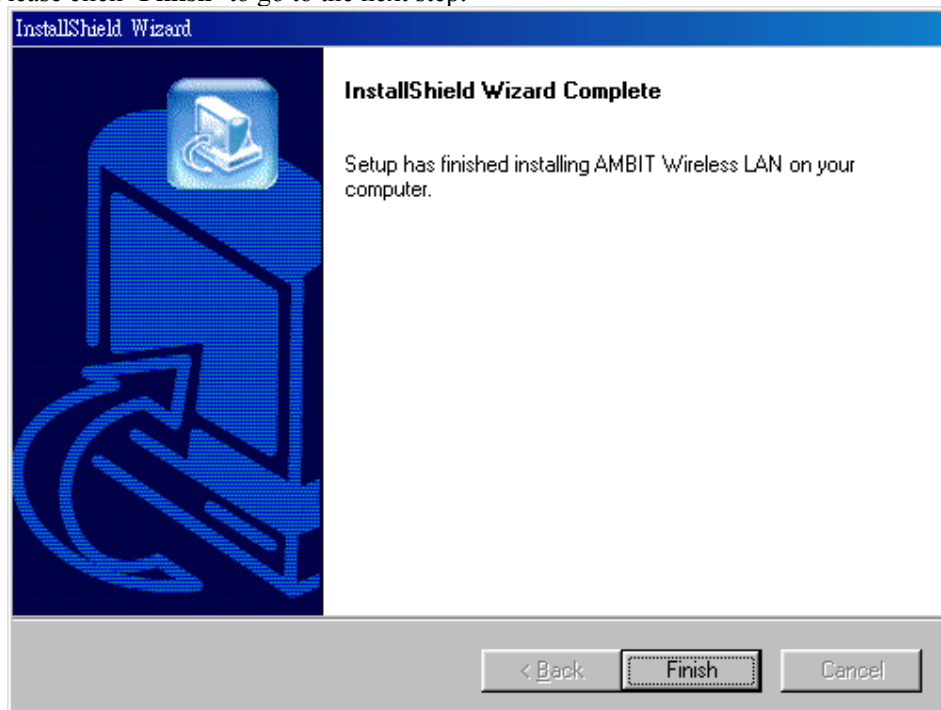
3. Select the destination folder that you want to place the files.



4. Wait for the install program to do the installation.



5. Congratulations! Wireless LAN has been installed successfully.  
Please click '**Finish**' to go to the next step.

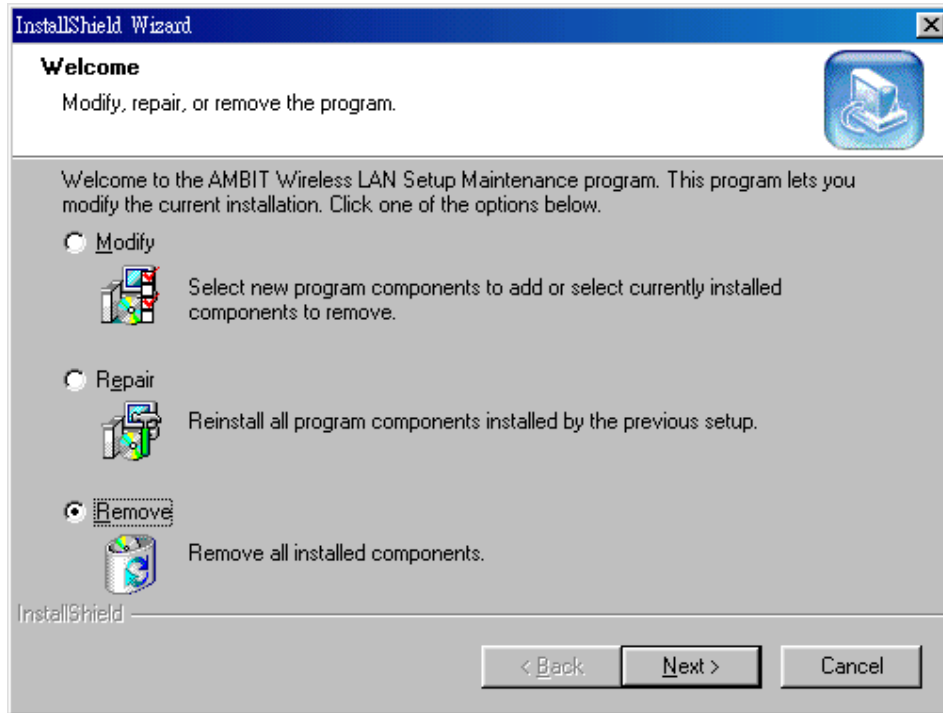


6. Please remove any disks from any drives before your click '**Finish**'. Then click '**Finish**' to complete setup.

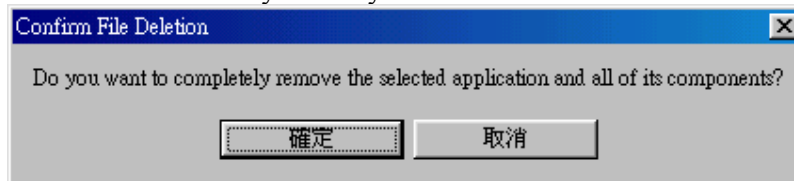


### Uninstall Wireless LAN (Windows 98/2K/ME/XP)

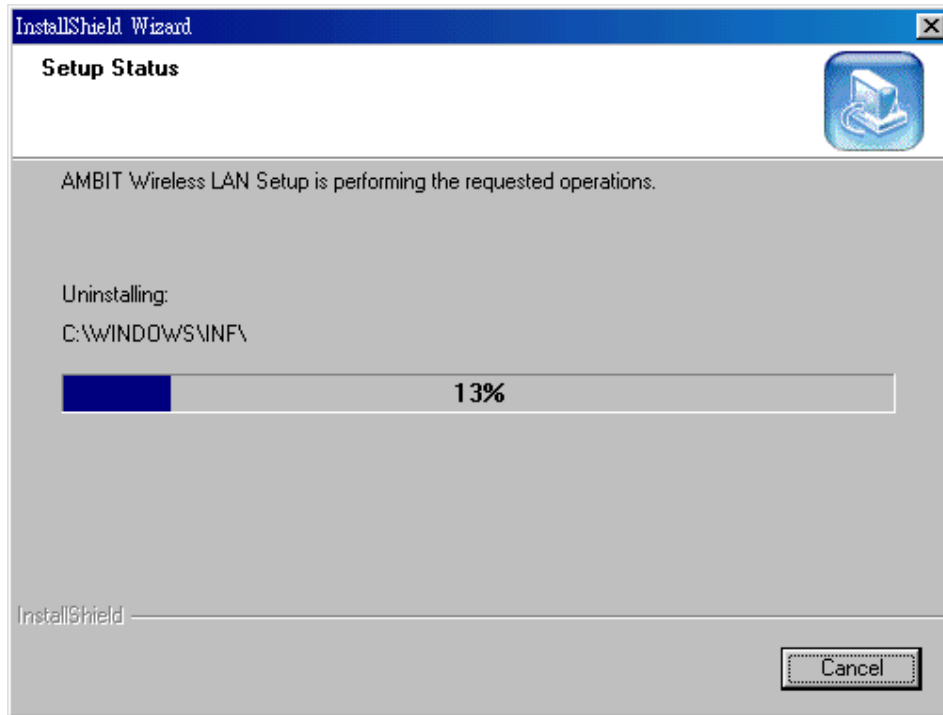
1. One can remove the AMBIT Wireless LAN via the 'Add/Remove Programs' in the 'Control Panel'. Select 'AMBIT Wireless LAN' and click 'Add/Remove' button, the dialog as below displays.



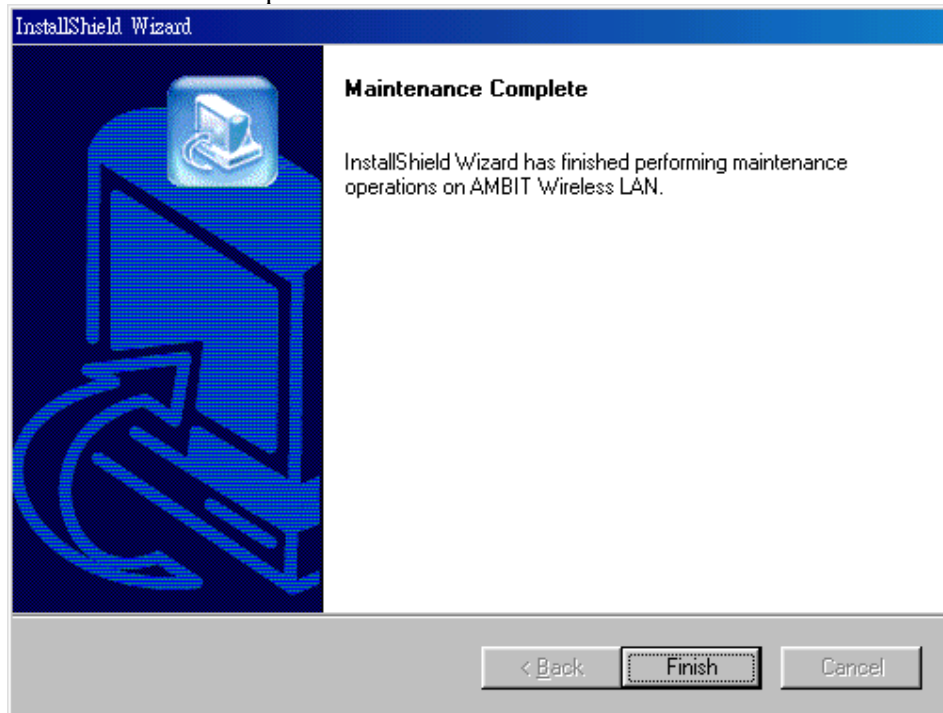
2. Select 'Remove' and then click the 'Next' button to perform the un-installation. Click 'OK' button if you really want to remove the AMBIT Wireless LAN.



3. Wait for the un-installation to do its work.



4. Click 'Finish' to complete the un-Installation.



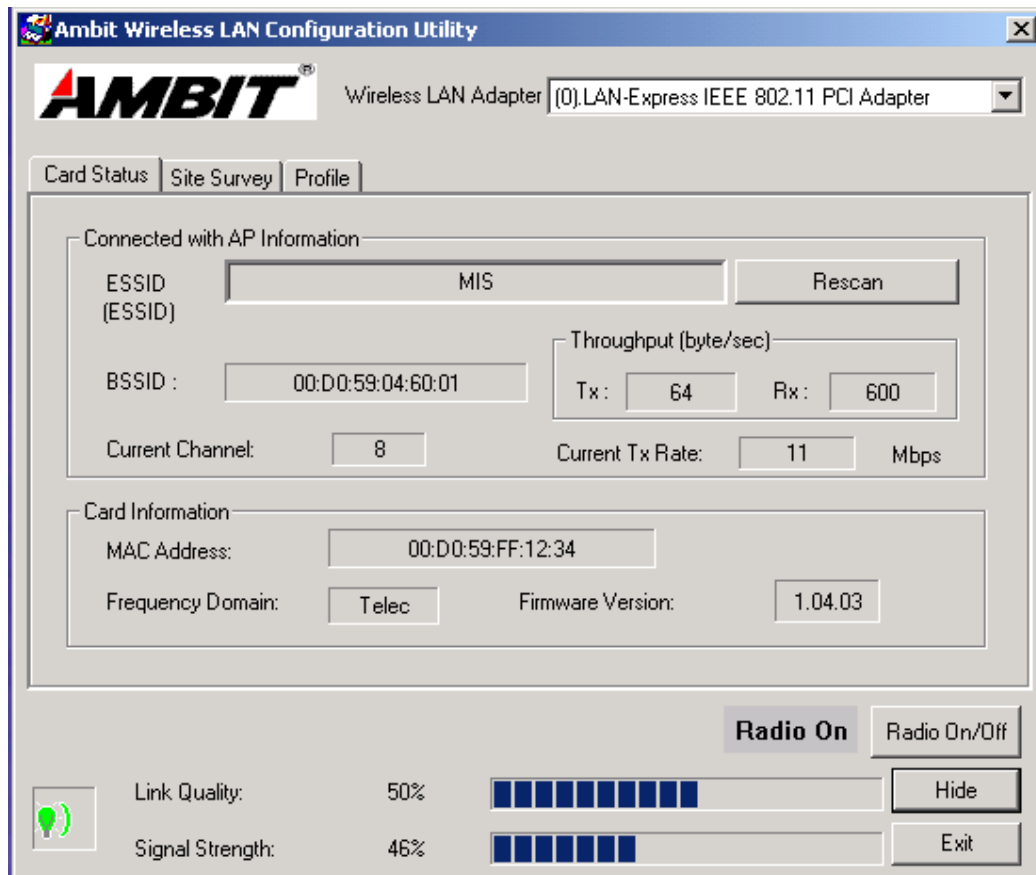
## Section 4 Wireless Utility and Configuration

The following sections describe the Wireless Network Configuration Utility. This utility provides quick access and friendly interface to configure the card setup.

### 4-1 Windows 98/ME/2000 Wireless Utility

After installation is completed, a Wireless LAN Utility icon will appear in Desktop screen. Click it, then you will see the screen below. If you cannot find the icon, you can select “Start” ->”Program”->”Wireless LAN Configuration Utility” Icon.

### Card Status



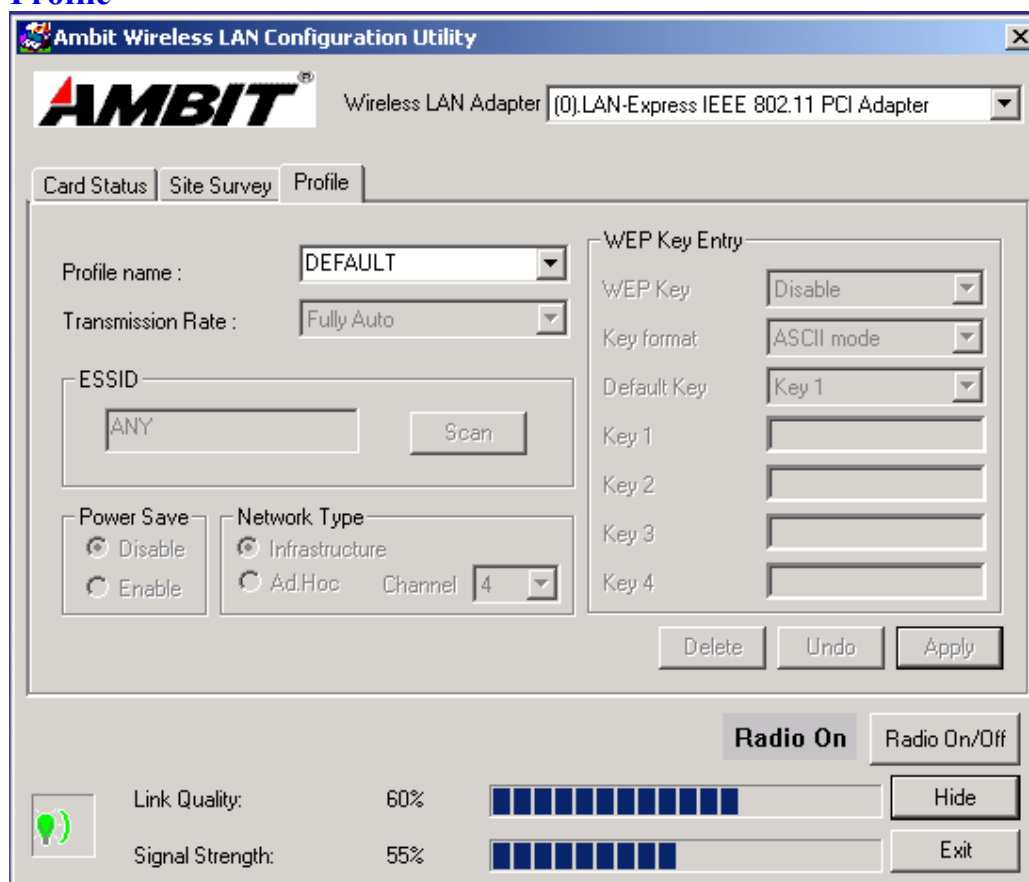
You can see the AP information that your card connected. In this page you also can find Firmware Version , MAC Address and Frequency Domain.

**ESSID:** An acronym for Extended Service Set Identifier, ESSID is the unique name shared among all clients and Access Points in a wireless network. The ESSID must be



identical for all clients or Access Points participating in the same network. The ESSID is case sensitive and must not exceed 32 characters. Press 'Rescan' it will scan the specific ESSID that your profile set. If your profile set the ESSID to be ANY, then while you press 'Rescan', it will scan AP in the nearby area and choose the stronger one. From Link Quality and Signal Strength, you can tell the wireless transmission quality.

## Profile



There are two network types:

**Ad-Hoc:** This mode is used for a simple peer-to-peer network. It offers file sharing between wireless clients without a wireless Access Point (AP).

**Infrastructure:** This mode allows a wireless LAN to be integrated into an existing wired network through an AP. Infrastructure type networks also permit roaming between Access Points while maintaining connection to all network resources. Infrastructure mode provides additional features, such as WEP security, power saving and extended range.

**ESSID:** You can either choose specific AP or connect to any AP in the nearby area.

**Power Save:** enable it, so it will be triggered when your computer system is inactive.

**WEP Key:** Wired Equivalent Privacy, WEP is an encryption scheme used to protect your wireless data communications. WEP uses a combination of 40-bit keys, 128-bit keys to provide data encryption for your wireless network. AP and wireless card should use the same WEP key in order to communicate.

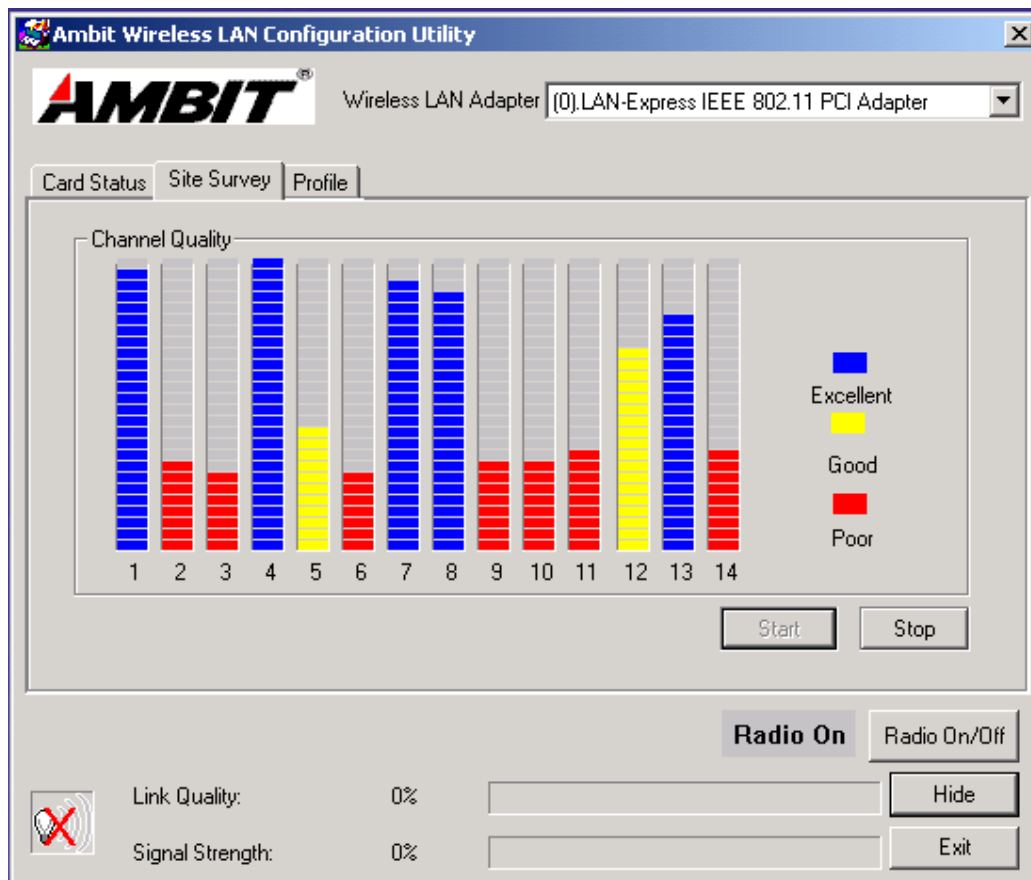
**KEY Format:** You can choose to enter ASCII Characters (0~9, a~z, A~Z) or Hexadecimal number (0~9, a~f, A~F)

**Default Key:** The current KEY you choose.

**KEY1~4:** If you choose 40-bit keys, then you must enter 5 ASCII Characters or 10 Hexadecimal numbers. If you choose 128-bit keys, then you must enter 13 ASCII Characters or 26 Hexadecimal numbers.

## Site Survey

Use the Site Survey Tool. You can identify each channel transmission quality.



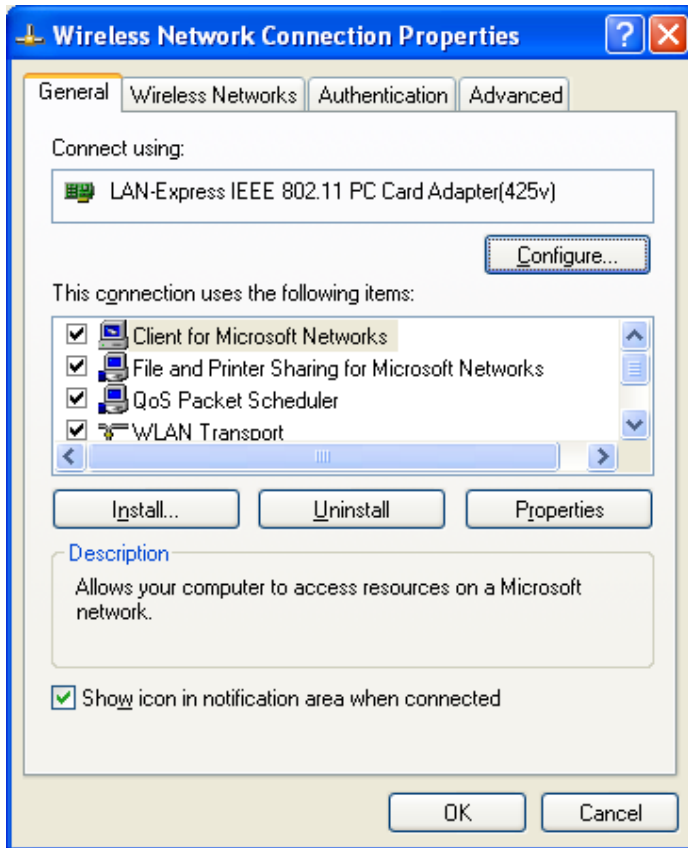
## 4-2 Windows XP Wireless Utility

1. To configure the wireless card setting, you can select Start\Settings\Network Connection in the Windows XP. Choose the wireless network connection, then you will see below screen. From this screen, you can see wireless connection status and wireless signal level.

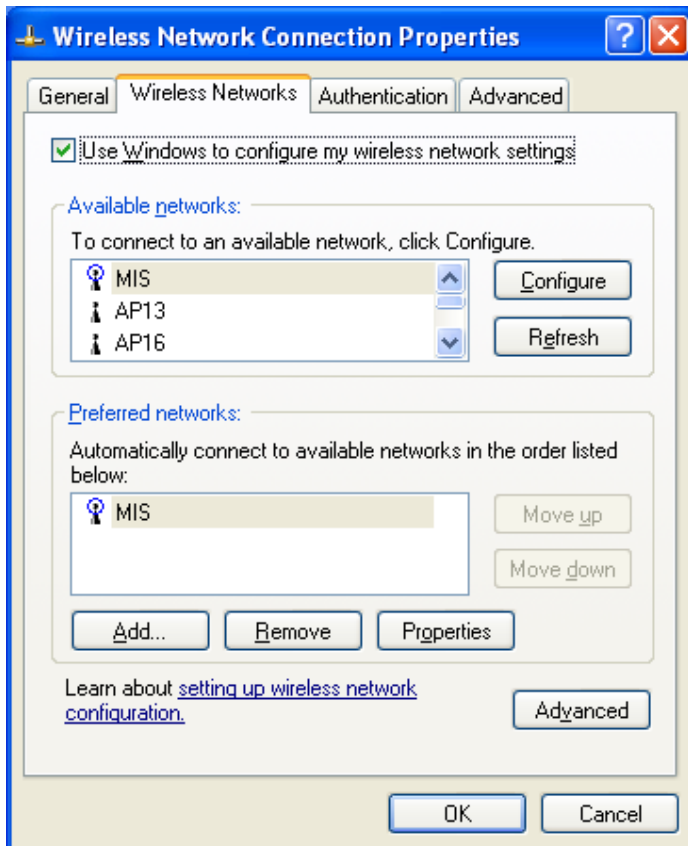


2. Select 'Properties' in the above screen. The following windows will show up.

In 'General' page, Wireless LAN card information and networking protocol have been displayed. Extra networking protocol can be installed in this page.



3. Select Wireless Networks page, you can see available wireless networks in your nearby area. You can add your preferred wireless Access Point to your list, so your wireless card will search for specific wireless networks.



### **Configure**

To connect to an existing access point (infrastructure) network, under Available networks, click the network name, and then click 'Configure' to setup wireless security and data encryption.

### **Refresh**

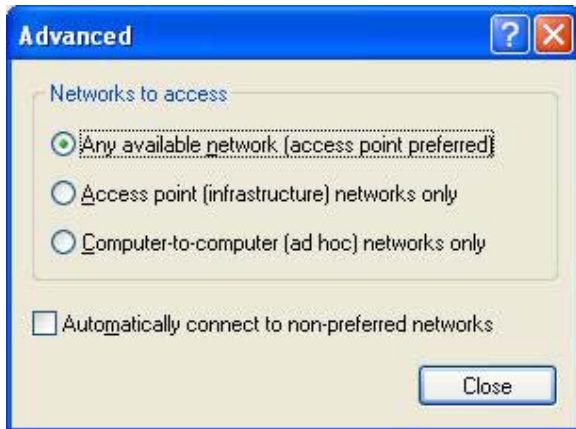
To update the list of available networks that are within range of your computer, click Refresh.

### **Add**

To connect to an access point (infrastructure) network that you know is available but that does not appear under Available networks, under Preferred networks, click Add. In Wireless Network Properties, specify the network name (Service Set Identifier).

### **Remove**

To remove a wireless network from the list of preferred networks.



### **Advanced**

\*If your network are configuring to a computer-to-computer (ad hoc) network, select ‘Computer-to-computer (ad hoc) network only’.

\*If you want to connect to a computer-to-computer and access point (infrastructure) networks are within range of your computer, click ‘Access point (infrastructure)network only’.

\*If you want to connect to a computer-to-computer (ad hoc) network and both computer-to-computer and access point (infrastructure) networks are within range of your computer, click ‘Any available network (access point preferred)’.

To automatically connect to available networks that do not appear in the Preferred networks list, click Advanced, and then select the Automatically connect to non-preferred networks check box.

Define your network name (SSID) in the following windows, so you can join a specific wireless network. Check AP has WEP on or not. Your wireless network will need to have same WEP setting with AP in order to communicate. If your wireless network don't have any AP, check the **'This is computer-to computer (ad-hoc) network; wireless access points are not used'**

**Wireless Network Properties**

Network name (SSID): MIS

**Wireless network key (WEP)**

This network requires a key for the following:

- Data encryption (WEP enabled)
- Network Authentication (Shared mode)

Network key:

Key format: ASCII characters

Key length: 104 bits (13 characters)

Key index (advanced): 0

The key is provided for me automatically

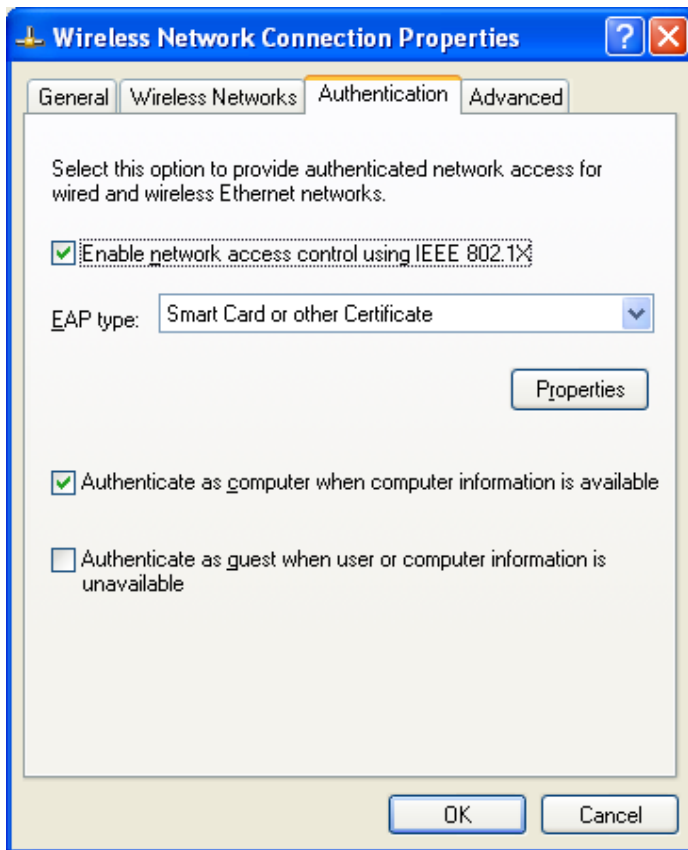
This is a computer-to-computer (ad hoc) network; wireless access points are not used

OK Cancel

This window provides authentication via 802.1X. 802.1X, an IEEE standard that provides an authentication framework for 802-based LANs. 802.1X takes advantage of an existing authentication protocol known as the Extensible Authentication Protocol. 802.1x, giving someone secure, encrypted, wireless access on a Microsoft network will be as easy as setting a flag on the users domain account.

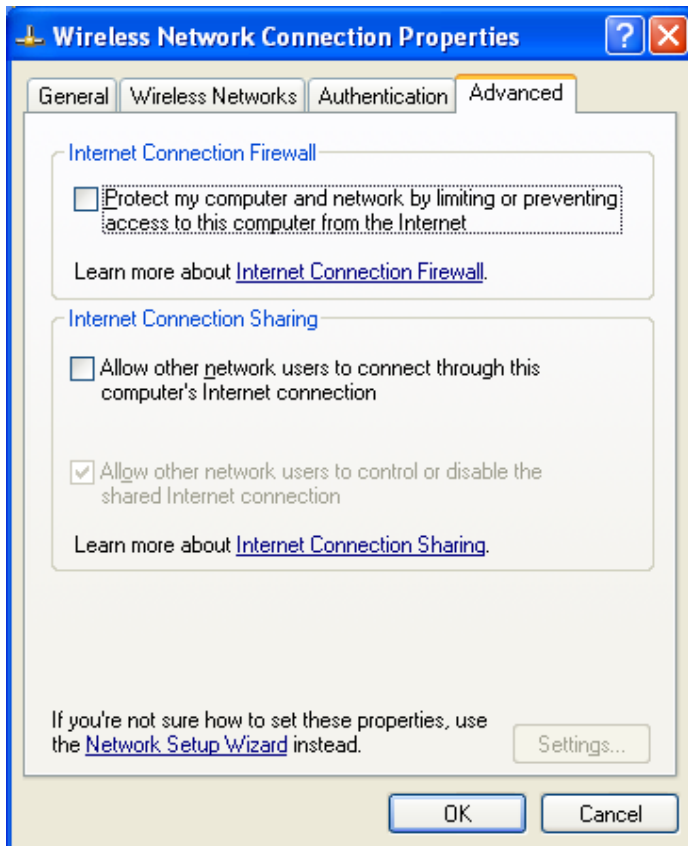
*What does this mean for the Home Network user?*

802.1x will ensure that if and when you make the change over to Wireless Ethernet, your neighbor will not be able to access your wireless LAN!





The 'Advanced' window offers Firewall and Internet Connection Sharing functions. Depends on your networking environment, you can select below functions.



## **Appendix A Glossary**

**Access Point** - An internetworking device that seamlessly connects wired and wireless networks together.

**Ad-Hoc** - Ad-Hoc is a peer- to-peer wireless network without Access Point. A group of wireless clients consistent an independent wireless LAN.

**Backbone** - The core infrastructure of a network, the portion of the network that transports information from one central location to another central location. The information is then off-loaded onto a local system.

**BSS** - Stands for “Basic Service Set.” An Access Point associated with several wireless stations.

**ESS** - Stands for “Extended Service Set.” More than one BSS can be configured as an Extended Service Set. An ESS is basically a roaming domain.

**Ethernet** - A popular local area data communications network, originally developed by Xerox Corp., which accepts transmission from computers and terminals. Ethernet operates on 10/100 Mbps transmission rate over shielded coaxial cable or over shielded twisted pair telephone wire.

**Infrastructure** - An integrated wireless and wired LAN is called an Infrastructure configuration.

**MINI-PCI TYPE III** - Personal Computer Memory Card International Association, which develops standards for PC cards, formerly known as MINI-PCI TYPE III cards, are available in three “types” which are about the same length and width as credit cards, but range in thickness from 3.3 mm (Type I) to 5.0 mm (Type II) to 10.5 mm (Type III). These cards can be used for many functions, including memory storage, as landline Bluetooths and as wireless LAN.

**Roaming** - A function that allows one to travel with a mobile end system (wireless LAN mobile station, for example) through the territory of a domain (an ESS, for example) while continuously connecting to the infrastructure.

**Throughput TX RX**

**Link Quality**

**Signal Strength**

**Channel Quality**

## **Regulatory Compliance Notices Class B Equipment**

This equipment has been tested and found to comply with the limits for a Class B digital device, pursuant to Part 15 of the FCC Rules. These limits are designed to provide reasonable protection against harmful interference in a residential installation. This equipment generates, uses, and can radiate radio frequency energy and, if not installed and used in accordance with the instructions, may cause harmful interference to radio communications. However, there is no guarantee that interference will not occur in a particular installation. If this equipment does cause harmful interference to radio or television reception, which can be determined by turning the equipment off and on, the user is encouraged to try to correct the interference by one or more of the following measures:

- Reorient or relocate the receiving antenna.
- Increase the separation between the equipment and receiver.
- Connect the equipment into an outlet on a circuit different from that to which the receiver is connected.
- Consult the dealer or an experienced radio or television technician for help.

### **Modifications**

The FCC requires the user to be notified that any changes or modifications made to this device that are not expressly approved by Actiontec Electronics, Inc may void the user's authority to operate the equipment.

Declaration of conformity for products marked with the FCC logo – United States only

This device complies with Part 15 of the FCC Rules. Operation is subject to the following two conditions: (1) This device may not cause harmful interference, and (2) This device must accept any interference received, including interference that may cause undesired operation.

**"IMPORTANT NOTE: To comply with FCC RF exposure compliance requirements the antenna used for this transmitter must be installed to provide a separation distance of at least 20 cm from all persons and must not be co-located or operating in conjunction with any other antenna or transmitter."**

---