

User Manual

DK-DEV-V5 / WUT-003

Important Information

This document provides you with important information about the safe use of your DK-DEV-V5 / WUT-003 Development kit. Please read this information carefully, and keep this document for future reference.

This development kit is provided to you under the terms of your DK-DEV-V5 / WUT-003 Development Kit License and may be used only in accordance with the License.

DK-DEV-V5 is a prototype product, and WUT-003 is a mass product, the difference between two models is only the model name. In addition, DK-DEV-V5 is not offered for sale, besides, WUT-003 is sold to professional developers only. In any cases, both products will not be in the consumer market.

IMPORTANT SAFETY NOTICE:

To ensure safe use of the development kit:

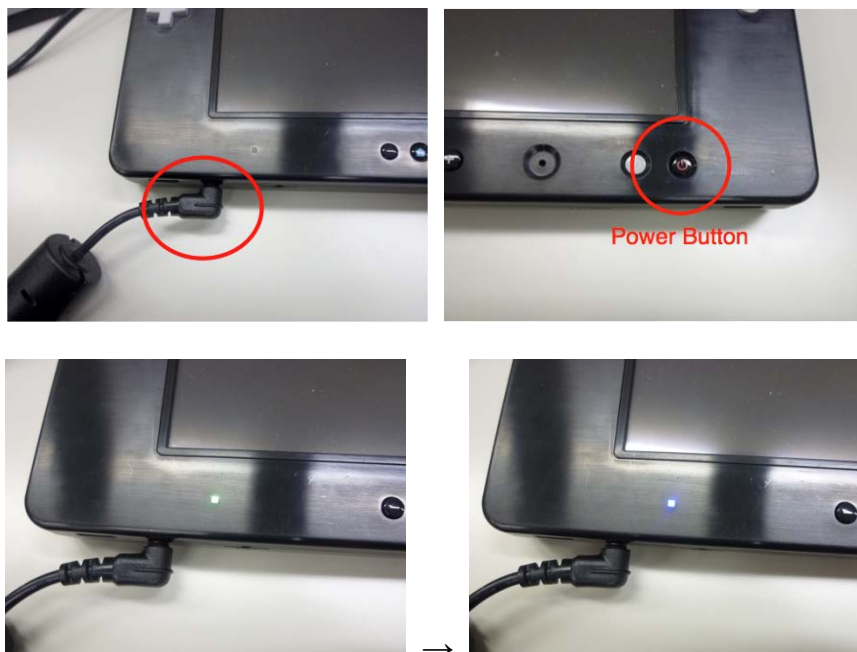
- Only allow professional developers to use the development kit.
- Do not allow anyone else to use it, particularly children.
- Only use the development kit in a product development workplace under controlled circumstances.

Product Specification

This DK-DEV-V5 / WUT-003 development kit is the controller for master console system equipped with an LCD display.

- Set up

1. Prepare the DK-DEV-V5 / WUT-003 and the console.
2. Power up the console.
3. Attach the AC adaptor to the DK-DEV-V5 / WUT-003, and power up it by pressing the power button. The Power LED will turn on Green, and then change to Blue.



- Usage

This device is used as shown below, holding in hands in front of body.

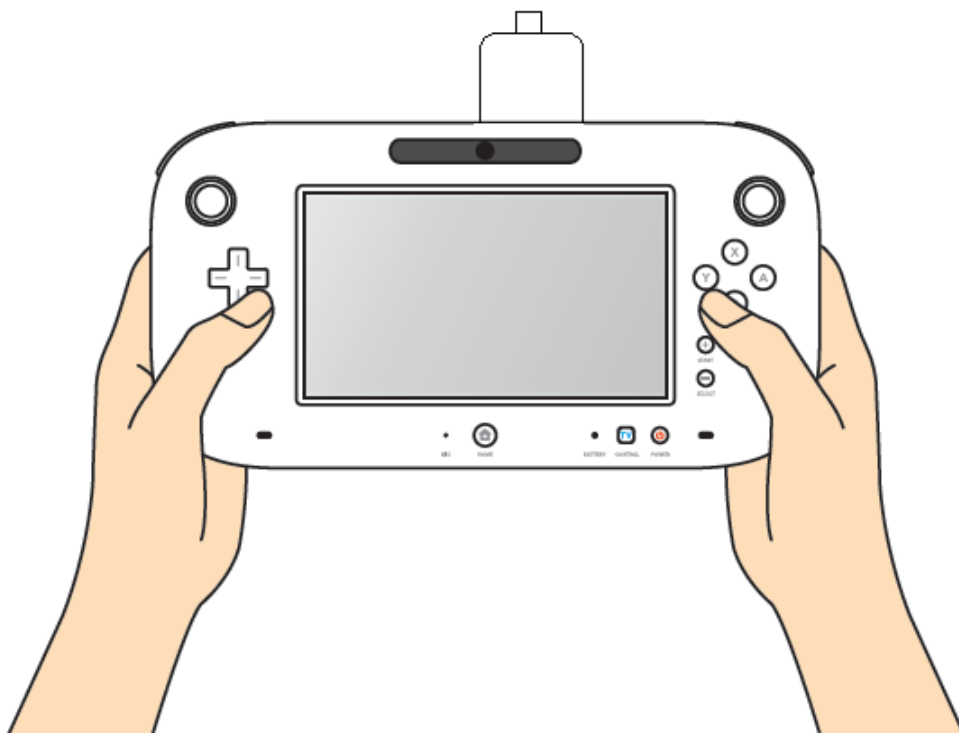
Control the buttons with thumbs seeing the Touch screen or TV screen.

When you need slope input, tilt this device slightly.

When you need "Touch Screen" control, put this device on table, and control by touching the Tough Screen directly with the included stylus.

Do not put any person or anything between this device and the master console because these are wirelessly communicating.

Do not use this device outdoors.



Exposure to Radio Frequency Energy

DK-DEV-V5 / WUT-003 contain radio transmitter and receiver. When on, this development kit sends and receives radio frequency (RF) energy through its antenna. Camera lens is located upper part of LCD, in a word, in central part at upper side of this development kit. Wi-Fi 2 antennas are located both sides of this camera lens. This development kit has been tested and meets the SAR exposure requirements for Wi-Fi operation.

For optimal portable device performance and to be sure that human exposure to RF energy does not exceed the FCC, IC, and European Union guidelines, always follow these instructions and precautions: DK-DEV-V5 / WUT-003 is used in 2 ways: have it by the both hands or put it on the table. In the case of use it by the both hands, it is used in various directions. When you have it upside down, away from your body or other objects since antenna is close to body.

DK-DEV-V5 / WUT-003 Wi-Fi is designed and manufactured to comply with the limits for exposure to RF energy set by the Federal Communications Commission (FCC) of the United States, Industry Canada (IC) of Canada, and regulating entities of the European Union.

Radio Frequency Interference

Radio-frequency emissions from electronic equipment can negatively affect the operation of other electronic equipment, causing them to malfunction. Although DK-DEV-V5 / WUT-003 Wi-Fi is designed, tested, and manufactured to comply with regulations governing radio frequency emission in countries such as the United States, Canada, the European Union, and Japan, the wireless transmitters and electrical circuits in DK-DEV-V5 / WUT-003 Wi-Fi may cause interference in other electronic equipment. Therefore, please take the following precautions:

Wireless Radio Use

This device is operated in 5180~5240MHz (indoor only) and 5745~5825MHz.

DK-DEV-V5 / WUT-003 Safety Precaution

Electric Shock:

To avoid electric shock when you use this system:

- Do not use this development kit during a lightning storm. There may be a risk of electric shock from lightning.
- Use only the AC Adapter that comes with your system.
- Do not use the AC Adapter if it has damaged, split or broken cords or wires.
- Make sure that the AC Adapter cord is fully inserted into the wall outlet or extension cord.
- Always carefully disconnect all plugs by pulling on the plug and not on the cord.

Make sure the development kit power button is turned OFF before removing the AC Adapter cord from an outlet.

Radio Frequency Interference:

This development kit can emit radio waves that can affect the operation of nearby electronics, including cardiac pacemakers.

- Do not operate this development kit within 9 inches of a pacemaker.
- If you have a pacemaker or other implanted medical device, do not use this development kit without first consulting your doctor or the manufacturer of your medical device.

FCC Compliance Statements

Caution:

Any changes or modifications not expressly approved by the party responsible for product compliance could void the user's authority to operate the equipment.

This device must not be co-located or operating in conjunction with any other antenna or transmitter.

This device complies with part 15 of the FCC rules. Operation is subject to the following two conditions: (1) this device may not cause harmful interference, and (2) this device must accept any interference received, including interference that may cause undesired operation.

This equipment has been tested and found to comply with the limits for a Class A digital device, pursuant to part 15 of the FCC Rules. These limits are designed to provide reasonable protection against harmful interference when the equipment is operated in a commercial environment. This equipment generates, uses and can radiate radio frequency energy and, if not installed and used in accordance with the instruction manual, may cause harmful interference to radio communications. Operation of this equipment in a residential area is likely to cause harmful interference in which case the user will be required to correct the interference at his own expense.

Canadian Compliance Statement

Complies with the Canadian ICES-003 Class A specifications. Cet appareil numérique de la Classe A est conforme à la norme NMB-003 du Canada.

This device complies with RSS 210 of Industry Canada.

Operation is subject to the following two conditions:

(1) This device may not cause interference, and (2) This device must accept any interference, including interference that may cause undesired operation of this device.

(1) il ne doit pas produire de brouillage et

(2) l' utilisateur du dispositif doit être prêt à accepter tout brouillage radioélectrique reçu,

même si ce brouillage est susceptible de compromettre le fonctionnement du dispositif.

To reduce potential radio interference to other users, the antenna type and its gain should be so chosen that the equivalent isotropic radiated power (EIRP) is not more than that required for successful communication.

Europe-EU Declaration of Conformity and Restrictions

Hereby, Nintendo declares that this DK-DEV-V5 and WUT-003 are in compliance with the essential requirements and other relevant provisions of Directive 1999/5/EC.

This equipment is marked with the CE symbol and can be used throughout the European community.

This indicates compliance with the R&TTE Directive 1999/5/EC and meets the relevant parts of following technical specifications:

EN 301 893, Broadband Radio Access Networks (BRAN) — 5 GHz high performance RLAN — Harmonized EN covering essential requirements of Article 3(2) of the R&TTE Directive

EN 301 489-17, Electromagnetic Compatibility and Radio spectrum Matters (ERM); Electromagnetic Compatibility (EMC) standard for radio equipment and services; Part 17: Specific Conditions for Wideband Data and HYPERLAN Equipment.

EN 60950-1, Safety of Information Technology Equipment.

EN 62311, Assessment of electronic and electrical equipment related to human exposure restrictions for electromagnetic fields (0 Hz-300 GHz).

Marking by the symbol  indicates that usage restrictions apply.

802.11a Restrictions:

- This product is for indoor use only when using channels 36, 40, 44, or 48 (5150–5250MHz).
- To ensure compliance with local regulations, be sure to select the country in which the access point is installed.

Caution: Exposure to Radio Frequency Radiation.

This device must not be co-located or operating in conjunction with any other antenna or transmitter, without further RF Exposure evaluation.