

Wireless Notices

**This device is intended for OEM integrators only.
This device cannot be co-located with any other transmitter.**

Information for the OEM Integrators:

In some environments, the use of wireless devices may be restricted. Such restrictions may apply aboard airplanes, in hospitals, near explosives, in hazardous locations, etc. If you are uncertain of the policy that applies to the use of this device, please ask for authorization to use it prior to turning it on.

U.S. Regulatory Wireless Notice

This device complies with Part 15 of the FCC Rules. Operation is subject to the following two conditions:

(1) This device may not cause harmful interference, and (2) this device must accept any interference received, including interference that may cause undesired operation.

The FCC requires the user to be notified that any changes or modifications made to device that are not expressly approved by the Hewlett-Packard Company may void the user's authority to operate the equipment.

This product emits radio frequency energy, but the radiated output power of this device is far below the FCC radio frequency exposure limits. Nevertheless, the device should be used in such a manner that the potential for human contact with the antenna during normal operation is minimized.

Caution: Radio Frequency Interference Requirements.

This device is restricted to indoor use due to its operation in the 5.15 to 5.25 GHz frequency range. FCC requires this product to be used indoors for frequency range 5.15 to 5.25 GHz to reduce the potential for harmful interference to co-channel Mobile Satellite systems. High power radars are allocated as primary users of the 5.25 to 5.35 GHz and 5.65 to 5.85 GHz bands. These radar stations can cause interference with and/or damage this device.



Warning: Exposure to Radio Frequency Radiation

The radiated output power of this device is far below the FCC radio frequency exposure limits. Nevertheless, the device should be used in such a manner that the potential for human contact during normal operation is minimized. In order to avoid the possibility of exceeding the FCC radio frequency exposure limits, human proximity to the antenna should not be less than 20cm (8 inches) during normal operation.

This device is intended only for OEM integrators under the following conditions:

- 1) The antenna must be installed such that 20 cm is maintained between the antenna and users. For laptop installations, the antenna must be installed to ensure that the proper spacing is maintained in the event the users places the device in their lap during use (i.e. positioning of antennas must be placed in the upper portion of the LCD panel only to ensure 20 cm will be maintained if the user places the device in their lap for use) and
- 2) The transmitter module may not be co-located with any other transmitter or antenna.
- 3) Only integral antenna(s) as described in this document can be used. OEM integrator has to ensure that no instruction will be provided to the user to remove or to have access to the antenna(s).

End Product Labeling

This transmitter module is authorized only for use in devices where the antenna may be installed such that 20 cm may be maintained between the antenna and users (for example access points, routers, wireless ASDL modems, certain laptop configurations, and similar equipment).

The final end product must be labeled in a visible area with the following: " FCC ID: XXXXXXXXXXXXXXXX," where XXXXXXXXXXXXXXXX is replaced by the FCC ID on the module being integrated.

USA Radio Frequency Interference Requirements FCC Regulations Part 15 Declaration of Conformity (DoC)

Ambit Microsystems Corporation declares that the equipment described in this document is within the requirements of the Code of Federal Regulations listed below:

Title 47 Part 15, Subpart B, Class B for a digital device.

This declaration is based upon the compliance of the Wireless LAN Mini PCI Adapters to the above standards. Ambit has determined that the models listed have been shown to comply with the applicable technical standards if no unauthorized change is made in the equipment and if the equipment is properly maintained and operated.

These units are identical to the units tested and found acceptable with the applicable standards. Records maintained by Ambit continue to reflect that units being produced under this Declaration of Conformity, within the variation that can be expected due to quantity production and tested on a statistical basis, continue to comply with the applicable technical standards.

Canadian Regulatory Wireless Notice

Operation is subject to the following two conditions: (1) this device may not cause interference, and (2) this device must accept any interference, including interference that may cause undesired operation of the device.

U.S. and Canada Safety Requirement and Notice

- Do not touch or move antenna while the unit is transmitting or receiving.
- Do not hold any component containing the radio such that the antenna is very close or touching any exposed parts of the body, especially the face or eyes, while transmitting.
- Do not operate the radio or attempt to transmit data unless the antenna is connected; if not, the radio may be damaged.

Warning: To comply with the FCC and ANSI C95.1 RF exposure limits, it is recommended for Wireless LAN Mini PCI Adapters installed in a desktop or portable computer, that the antenna for this device be installed so as to provide a separation distance of at least **20 cm (8 inches)** from all persons and that the antenna must not be co-located or operating in conjunction with any other antenna or radio transmitter. It is recommended that the user limit exposure time if the antenna is positioned closer than **20 cm (8 inches)**.

Use On Aircraft Caution

Caution: Regulations of the FCC and FAA prohibit airborne operation of radio-frequency wireless devices because their signals could interfere with critical aircraft instruments.

European Union Notice



Products bearing the CE marking comply with the R&TTE Directive (1999/5/EC), EMC Directive (89/336/EEC) and the Low Voltage Directive (73/23/EEC) issued by the Commission of the European Community.

Compliance with these directives implies conformity to the following European Norms (in parentheses are the equivalent international standards and regulations):

- EN 55022 (CISPR 22) – Electromagnetic Interference
- EN55024 (IEC61000-4-2, 3, 4, 5, 6, 8, 11) – Electromagnetic Immunity
- EN61000-3-2 (IEC61000-3-2) – Power Line Harmonics
- EN61000-3-3 (IEC61000-3-3) – Power Line Flicker
- EN 60950 (IEC 60950) – Product Safety
- EN 300 328-2 – Technical requirements for radio equipment
- EN 301 489-1, -17 – General EMC requirements for radio equipment

This product may be used in the following EU and EFTA countries: Austria, Belgium, Denmark, Finland, Germany, Greece, Iceland, Ireland, Italy, Liechtenstein, Luxembourg, Netherlands, Norway, Portugal, Sweden, Switzerland and United Kingdom. **Products not marked with “Not for use in France” may be used in France.**

Japanese Regulatory Wireless Notice

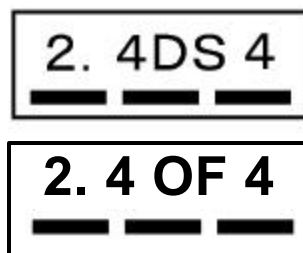
この機器の使用周波数帯では、電子レンジ等の産業・科学・医療用機器のほか工場の製造ライン等で使用されている移動体識別用の構内無線局（免許を要する無線局）及び特定小電力無線局（免許を要しない無線局）が運用されています。

1 この機器を使用する前に、近くで移動体識別用の構内無線局及び特定小電力無線局が運用されていないことを確認して下さい。

2 万一、この機器から移動体識別用の構内無線局に対して電波干渉の事例が発生した場合には、速やかに使用周波数を変更するか又は電波の発射を停止した上、下記連絡先にご連絡頂き、混信回避のための処置等（例えば、パーティションの設置など）についてご相談して下さい。

3 その他、この機器から移動体識別用の特定小電力無線局に対して電波干渉の事例が発生した場合など何かお困りのことが起きたときは、次の連絡先へお問い合わせ下さい。

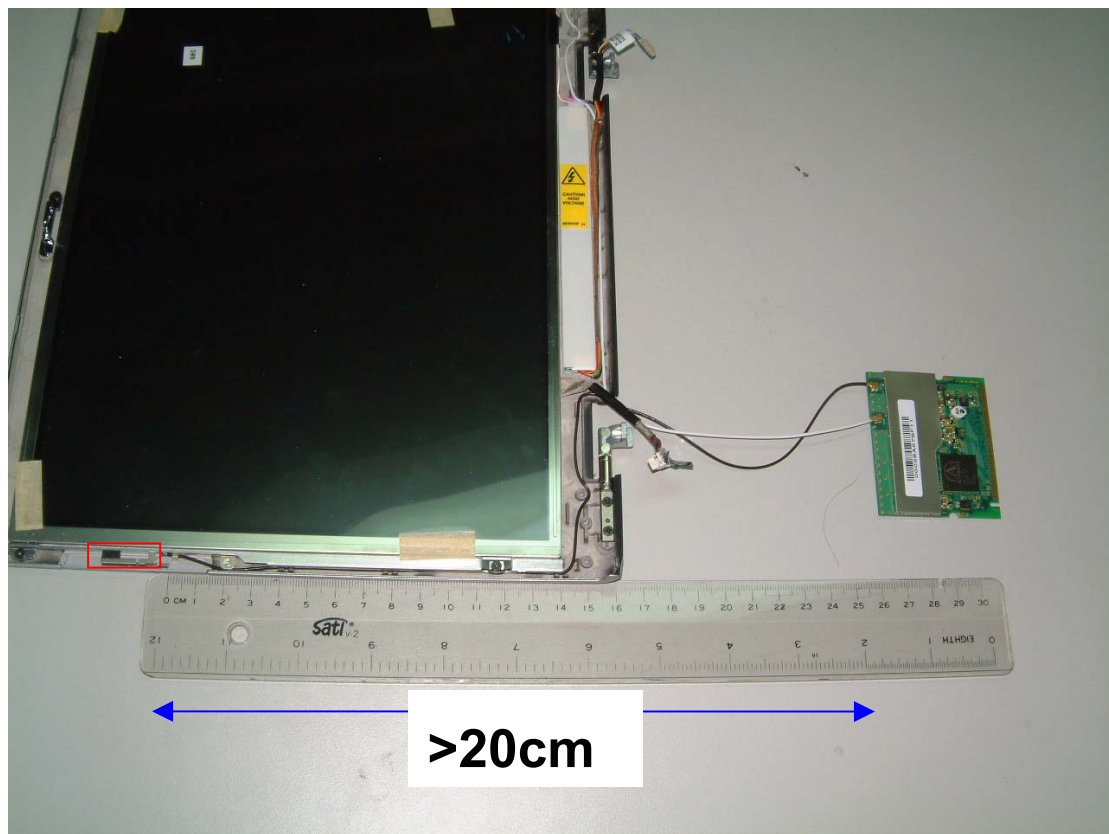
連絡先：コンパックコンピュータ株式会社 TEL：0120-101589



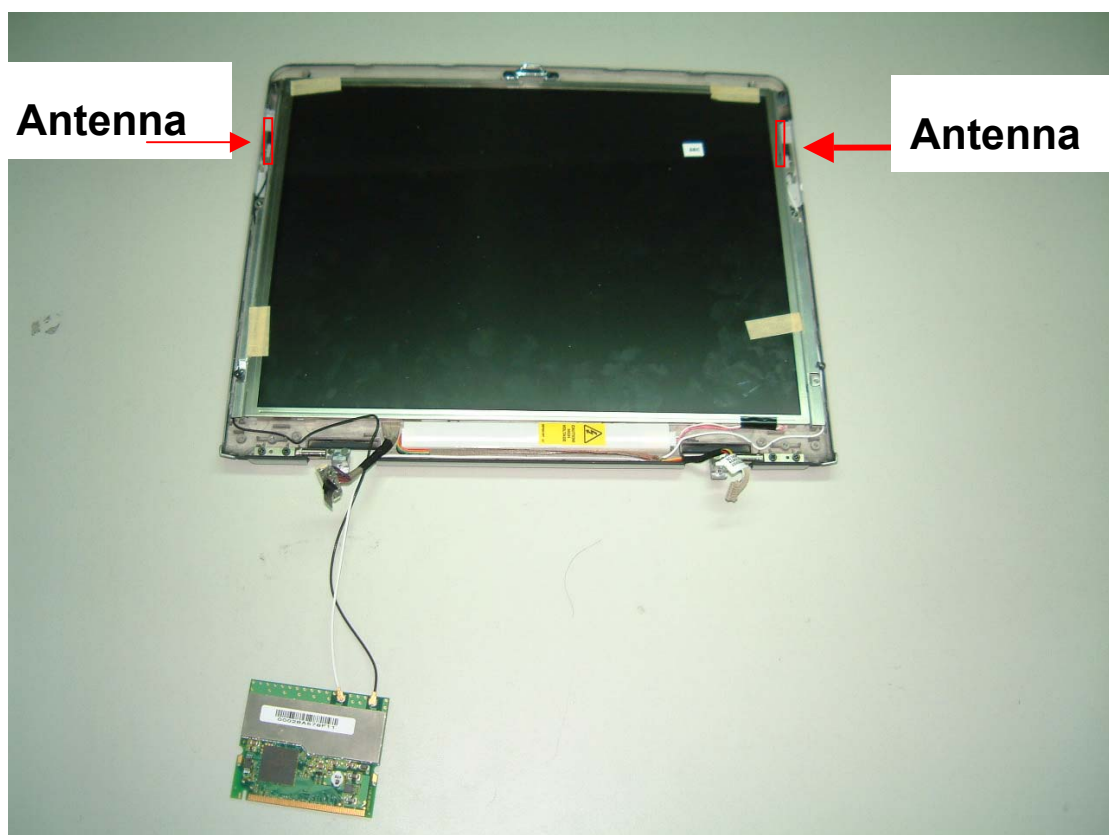
Note: In Japan 5GHz is for indoor use only

Brazilian Regulatory Wireless Notice

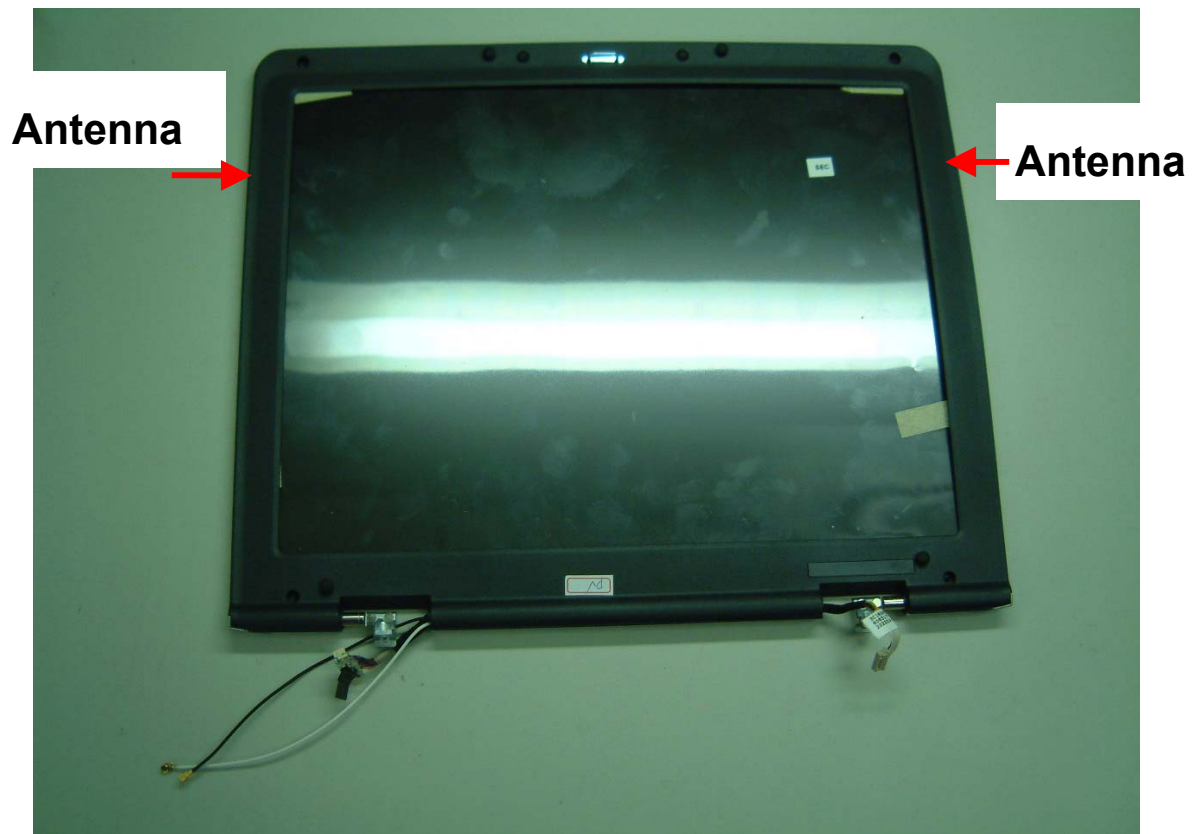
Este equipamento opera em caráter secundário, isto é, não tem direito a proteção contra interferência prejudicial, mesmo de estações do mesmo tipo, e não pode causar interferência a sistemas operando em caráter primário.



View With Cable and Module



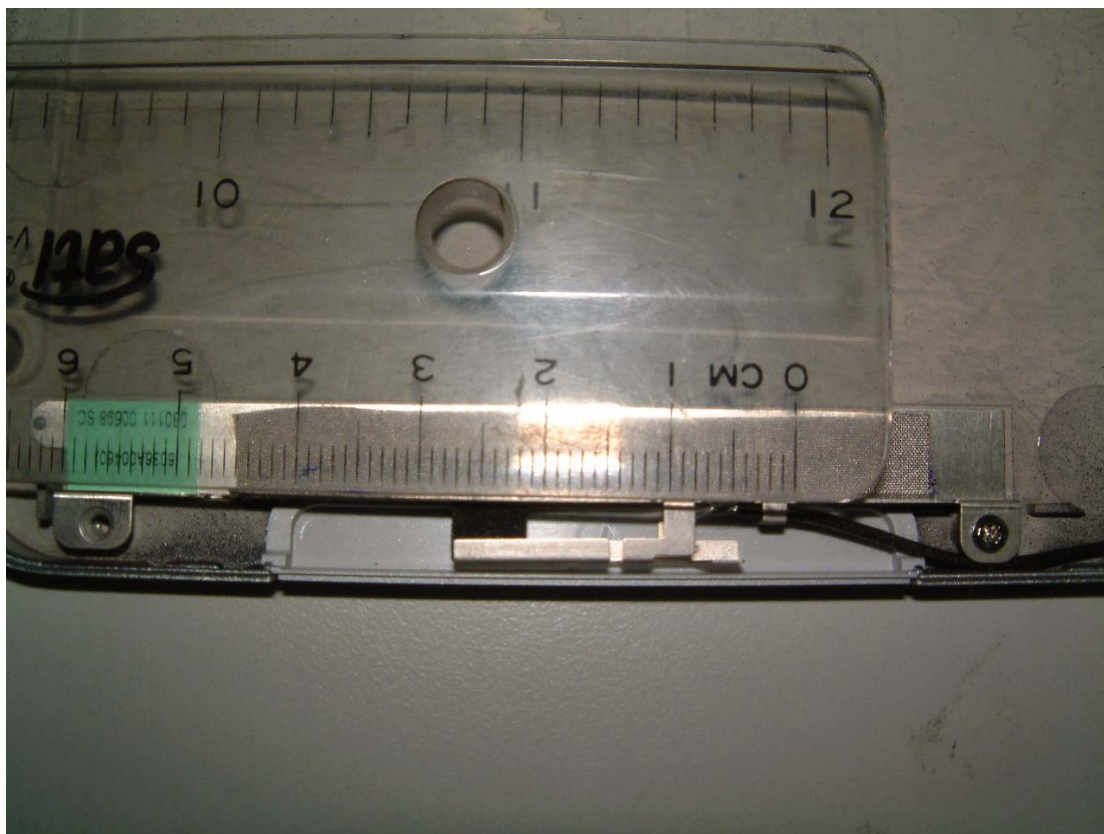
View With Cable and Module



View With Antenna installed in the Panel



View with Loaded Plane



Right Antenna Close View



Left Antenna Close View

INVENTEC WORKING INSTRUCTION

Model Sapphire 1.0

Station LCM ASS'Y

3 (8f)

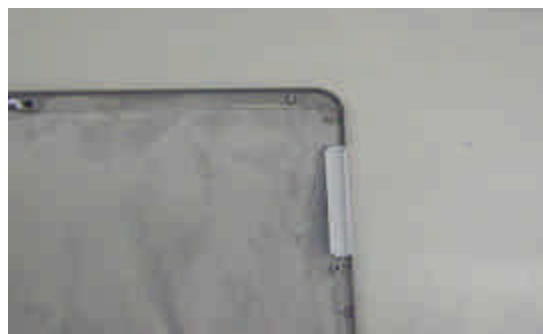
Ver 1.0

L

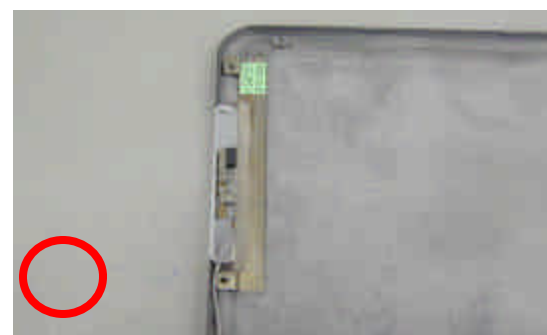


(1)

R



(1)



(2)



(2)

❖ Run the Cable around the iron plate

❖ Make sure the screw stays clear of the Cable



(3)

❖ Run the Cable along the edge of the case. Follow the same instructions for both the "R" and "L" Antenna.

1. Click on both Antenna L (part no.1290A0013001) and R (part no.1290A001301)

2. Install Antenna L, tighten Screw (part no.6052A0020901), smooth out the cable

❖ Torque $2.0 \pm 0.5 \text{ kg-cm}$

3. Install Antenna R, tighten Screw (part no.6052A0020901), smooth out the cable

❖ Torque $2.0 \pm 0.5 \text{ kg-cm}$

Jig & Fixture	EA	Jig & Fixture	EA
Power screw driver (crosshead)	1		

INVENTEC WORKING INSTRUCTION

Model Sapphire 1.0

Station

FA

Ass'y

5 (

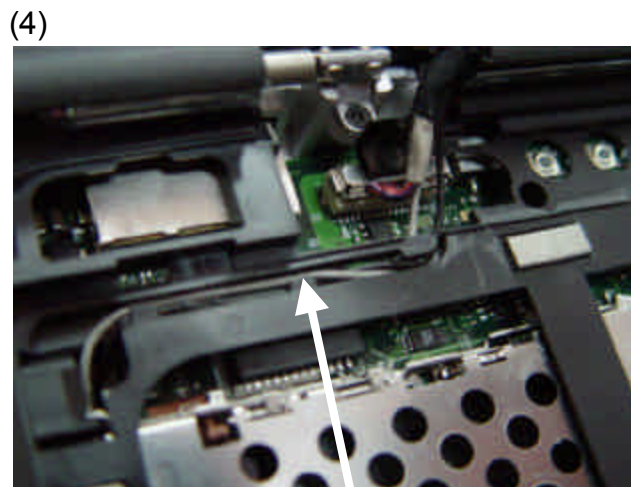
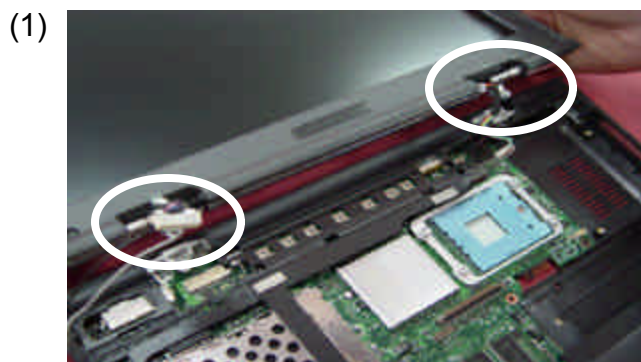
10f

)

Ver

1.0

- 1.Screw on both LCM Screws (part no. 6052A0021101),
as shown in (1) •Torque 2.5 0.5kg, HI
- 2.Insert both CNTR, as shown in (2)
- 3.Follow wire placement as shown in (3)



❖ TPCB

4. Run the Cable along the side of TPCB as shown in (4)
5. Then run the Cable through the TPCB and below to the Antenna hole as shown in (5)

Jig & Fixture	EA	Jig & Fixture	EA
Power screw driver	1		