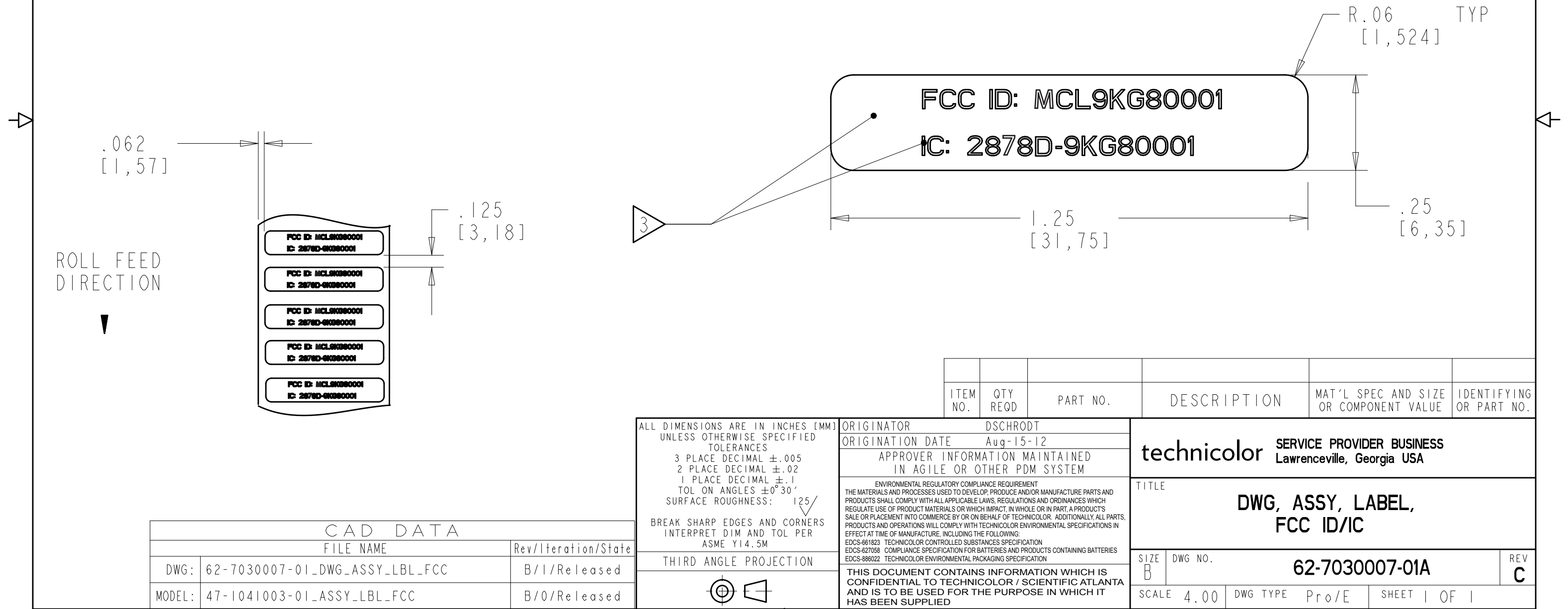


- NOTES:
- MATERIAL: WHITE POLYESTER STOCK WITH ADHESIVE BACKING.
MAKE FROM LABEL BLANK TECHNICOLOR P/N 47-4013869-01.
 - PRINTING OF THIS LABEL IS TO BE DONE USING THERMAL TRANSFER RIBBON (MADE FROM RESIN). THE LAYOUT, FONT TYPE AND POINT SIZE IS APPROXIMATELY AS SHOWN
- TEXT COLOR: BLACK
BACKGROUND: WHITE

REVISION HISTORY			
REV	DESCRIPTION	DATE	APPROVED
A	174321 DSCHRODT	15-AUG-12	B.ROGERS
B	174867 CORNELL LEWIS	01-OCT-12	B.ROGERS
C	Updated FCC ID and IC No. to Foxconn FCC ID and IC No.	2016.05.31	Cerina Chang



CAD DATA		
FILE NAME		Rev/Iteration/State
DWG:	62-7030007-01_DWG_ASSY_LBL_FCC	B/1/Released
MODEL:	47-1041003-01_ASSY_LBL_FCC	B/0/Released

ALL DIMENSIONS ARE IN INCHES [MM] UNLESS OTHERWISE SPECIFIED TOLERANCES 3 PLACE DECIMAL $\pm .005$ 2 PLACE DECIMAL $\pm .02$ 1 PLACE DECIMAL $\pm .1$ TOL ON ANGLES $\pm 0^{\circ}30'$ SURFACE ROUGHNESS: 125/ BREAK SHARP EDGES AND CORNERS INTERPRET DIM AND TOL PER ASME Y14.5M
THIRD ANGLE PROJECTION

ITEM NO.	QTY REQD	PART NO.	DESCRIPTION	MAT'L SPEC AND SIZE OR COMPONENT VALUE	IDENTIFYING OR PART NO.
ORIGINATOR DSCHRODT ORIGINATION DATE Aug-15-12 APPROVER INFORMATION MAINTAINED IN AGILE OR OTHER PDM SYSTEM			technicolor SERVICE PROVIDER BUSINESS Lawrenceville, Georgia USA		
ENVIRONMENTAL REGULATORY COMPLIANCE REQUIREMENT THE MATERIALS AND PROCESSES USED TO DEVELOP, PRODUCE AND/OR MANUFACTURE PARTS AND PRODUCTS SHALL COMPLY WITH ALL APPLICABLE LAWS, REGULATIONS AND ORDINANCES WHICH REGULATE USE OF PRODUCT MATERIALS OR WHICH IMPACT, IN WHOLE OR IN PART, A PRODUCT'S SALE OR PLACEMENT INTO COMMERCE BY OR ON BEHALF OF TECHNICOLOR. ADDITIONALLY, ALL PARTS, PRODUCTS AND OPERATIONS WILL COMPLY WITH TECHNICOLOR ENVIRONMENTAL SPECIFICATIONS IN EFFECT AT TIME OF MANUFACTURE, INCLUDING THE FOLLOWING: EDCS-661823 TECHNICOLOR CONTROLLED SUBSTANCES SPECIFICATION EDCS-627058 COMPLIANCE SPECIFICATION FOR BATTERIES AND PRODUCTS CONTAINING BATTERIES EDCS-886022 TECHNICOLOR ENVIRONMENTAL PACKAGING SPECIFICATION			TITLE DWG, ASSY, LABEL, FCC ID/IC		
THIS DOCUMENT CONTAINS INFORMATION WHICH IS CONFIDENTIAL TO TECHNICOLOR / SCIENTIFIC ATLANTA AND IS TO BE USED FOR THE PURPOSE IN WHICH IT HAS BEEN SUPPLIED			SIZE B	DWG NO. 62-7030007-01A	REV C
			SCALE 4.00	DWG TYPE Pro/E	SHEET 1 OF 1