

1 Annex C – EUT pictures (internal)

1.1 List of Pictures

Picture 1: EUT open2

Picture 1: PCB top side2

Picture 2: PCB bottom side.....3

Picture 3: Main PCB top side.....4

Picture 4: Main PCB top side.....5

Picture 5: Main PCB bottom side.....6

Picture 6: small PCB top side7

Picture 7: small PCB bottom side7

Picture 8: Antenna PCB top side8

Picture 9: Antenna PCB bottom side8



EMV **TESTHAUS** GmbH
Gustav-Hertz-Straße 35
94315 Straubing
Germany
Revision: 1.0

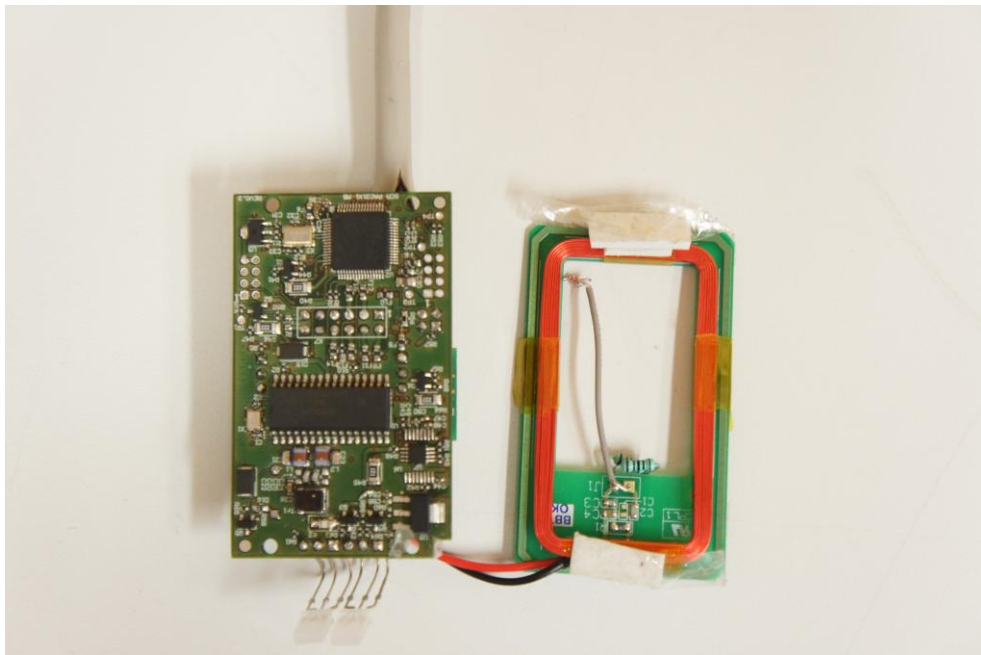
Identive Group Inc
RFID reader PAC21x1

110186-AU01+W02
Annex C

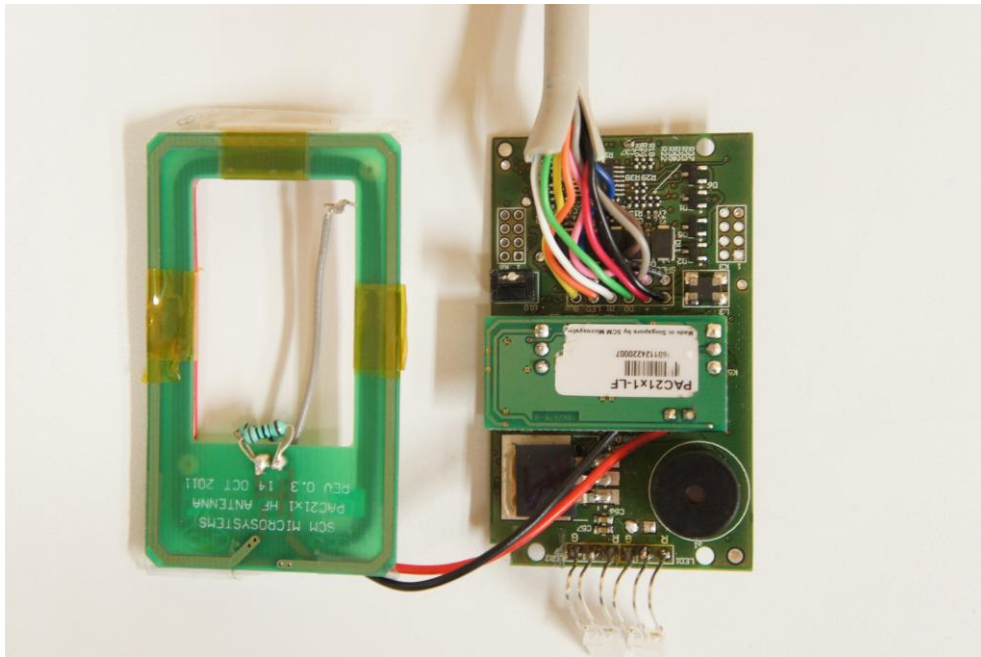
Page 1 of 8



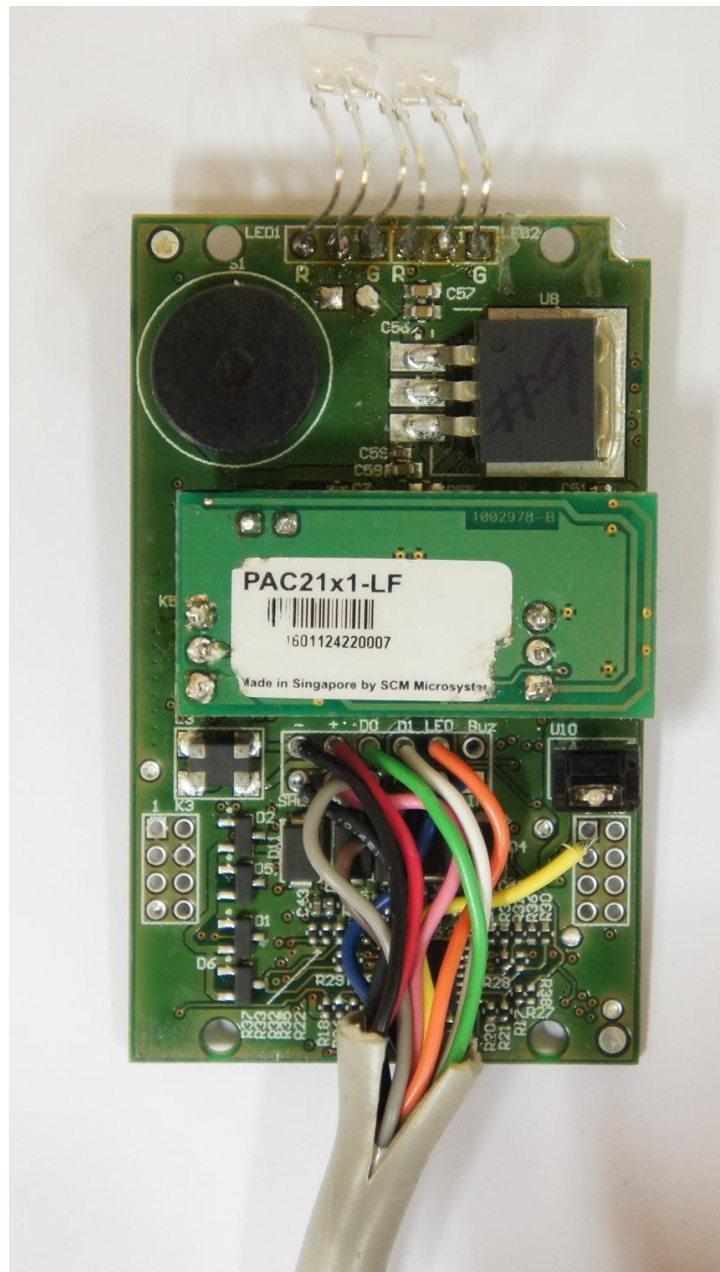
Picture 1: EUT open



Picture 2: PCB top side



Picture 3: PCB bottom side



Picture 4: Main PCB top side

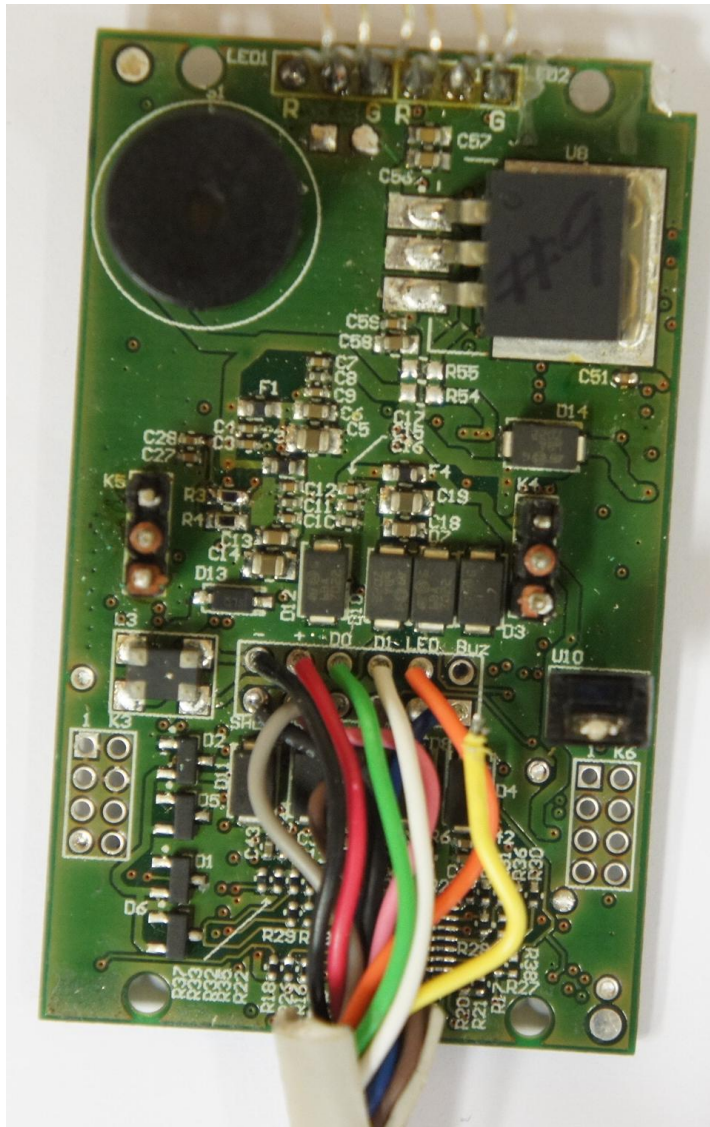


EMV **TESTHAUS** GmbH
 Gustav-Hertz-Straße 35
 94315 Straubing
 Germany
 Revision: 1.0

Identive Group Inc
 RFID reader PAC21x1

110186-AU01+W02
 Annex C

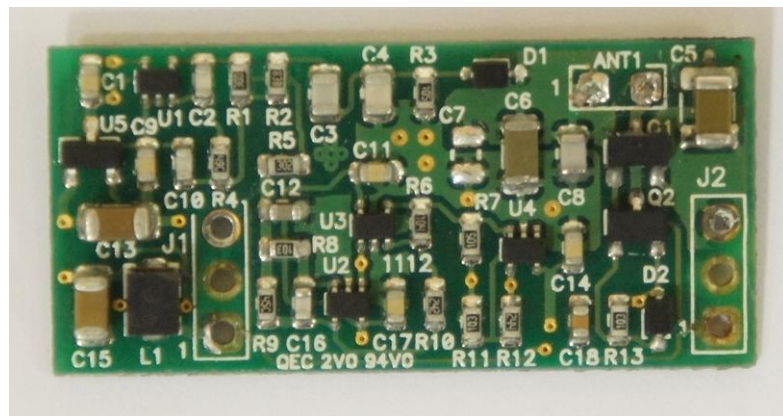
Page 4 of 8



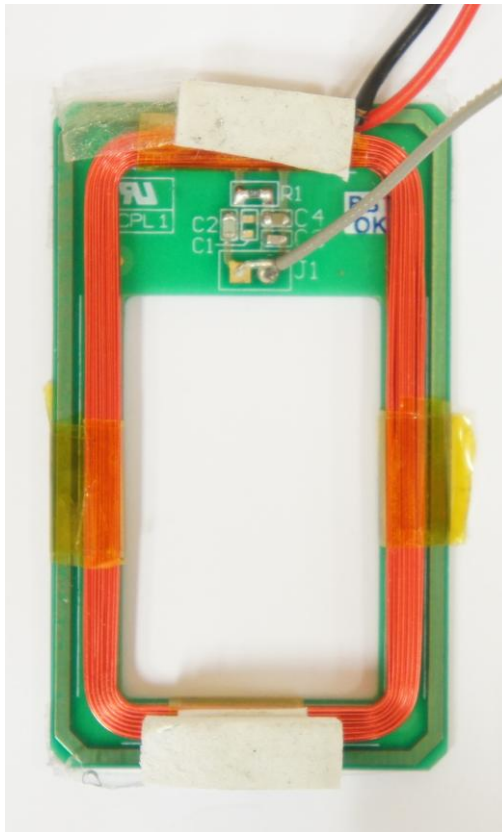
Picture 5: Main PCB top side



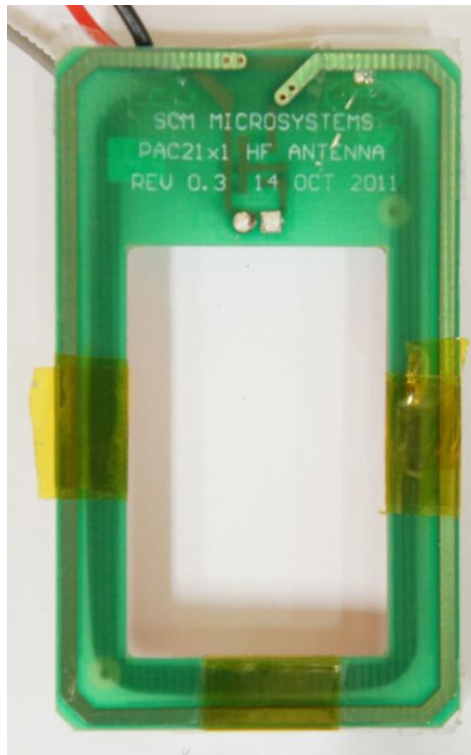
Picture 7: small PCB top side



Picture 8: small PCB bottom side



Picture 9: Antenna PCB top side



Picture 10: Antenna PCB bottom side