

# EUT PHOTOGRAPHS

---

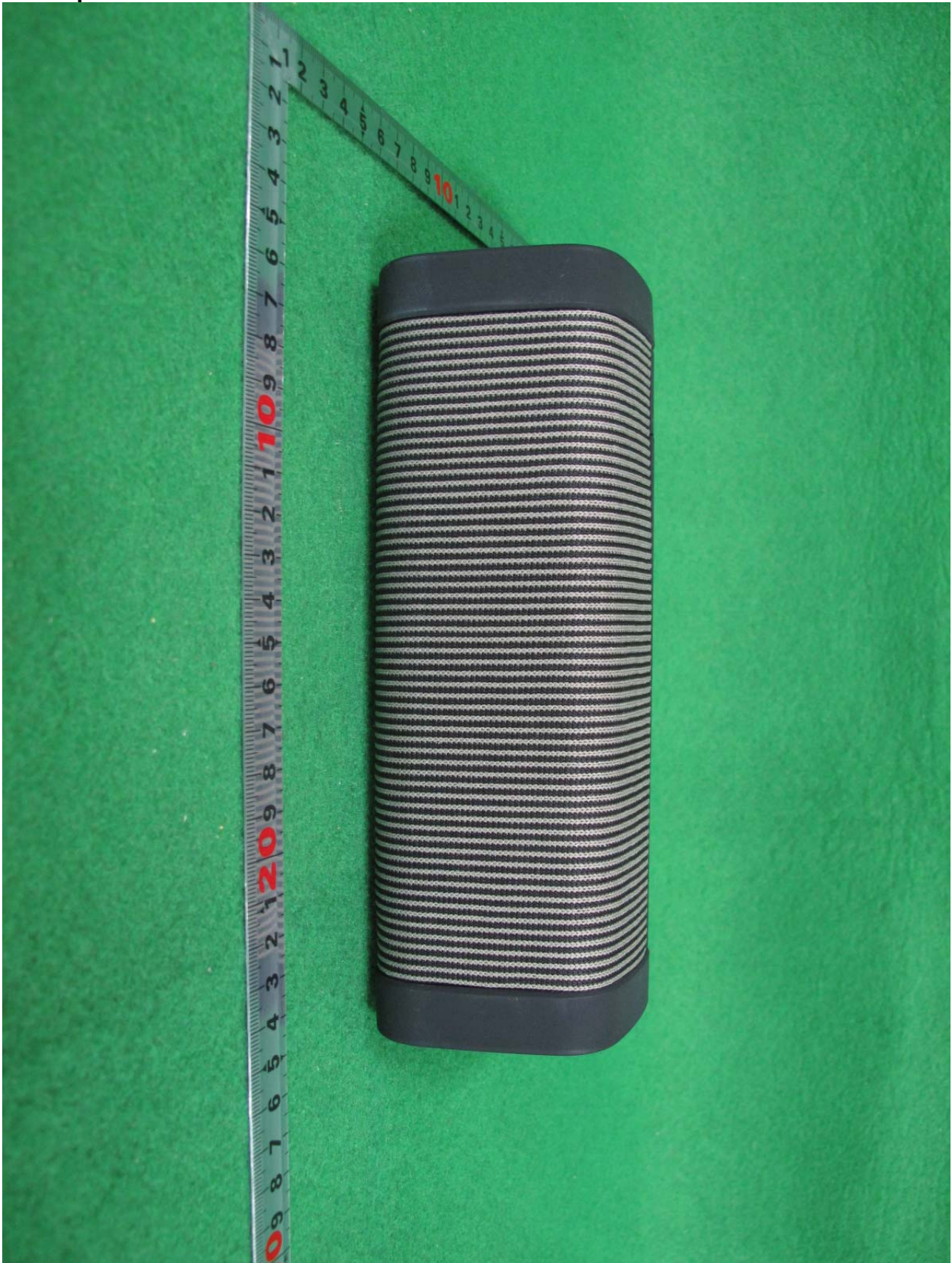
Front View of EUT



**Rear View of EUT**



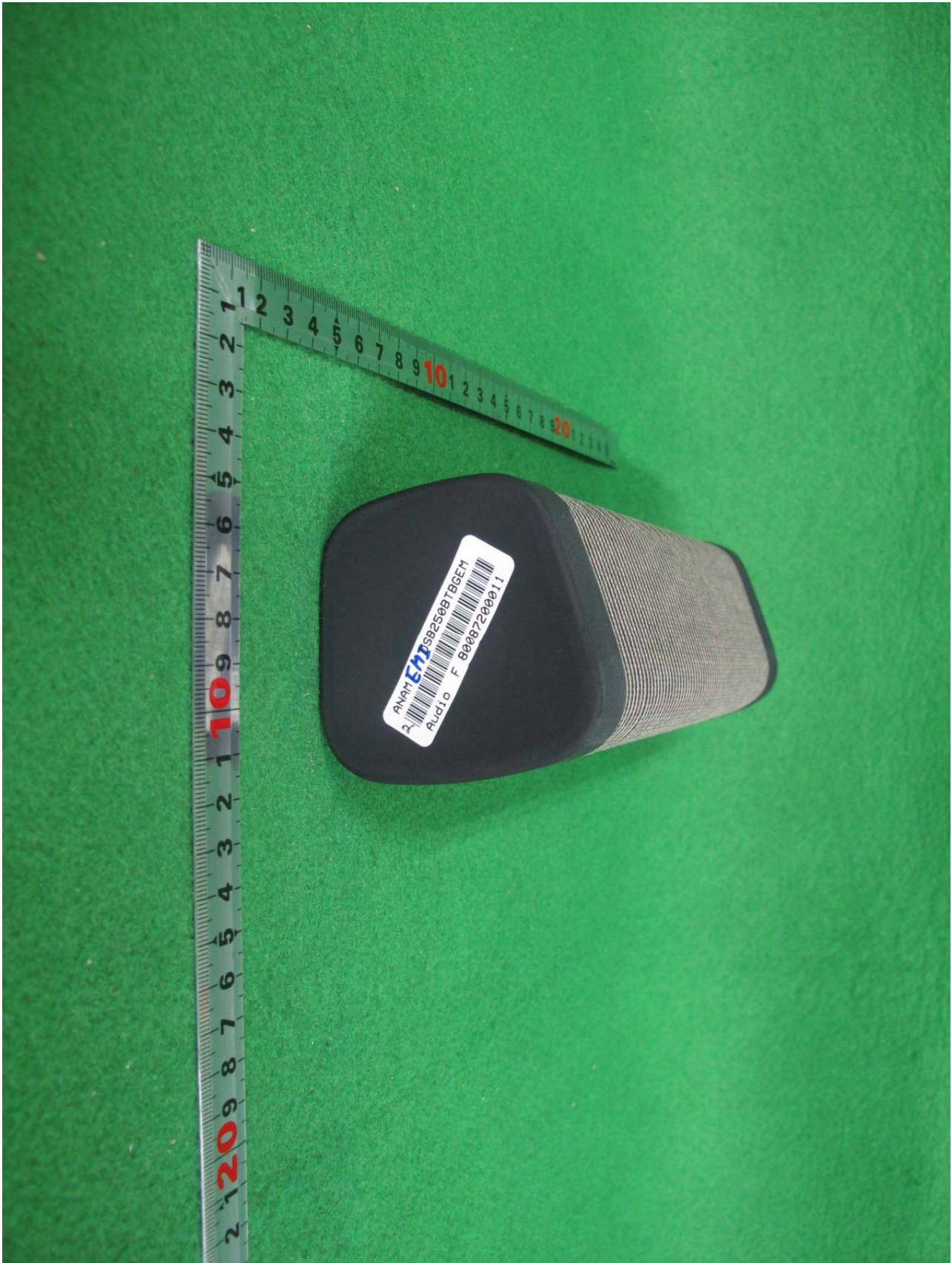
**Top View of EUT**



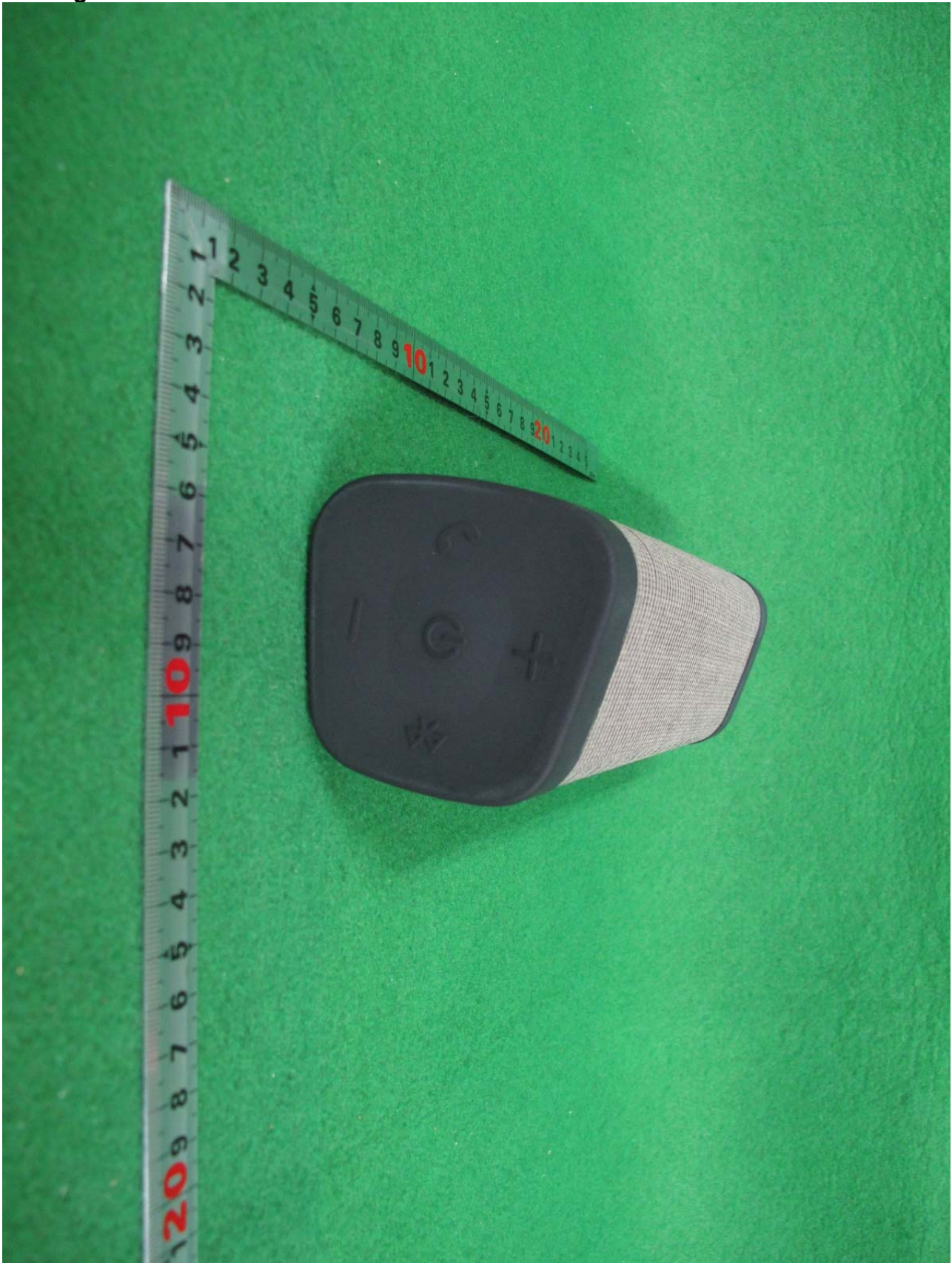
**Bottom View of EUT**



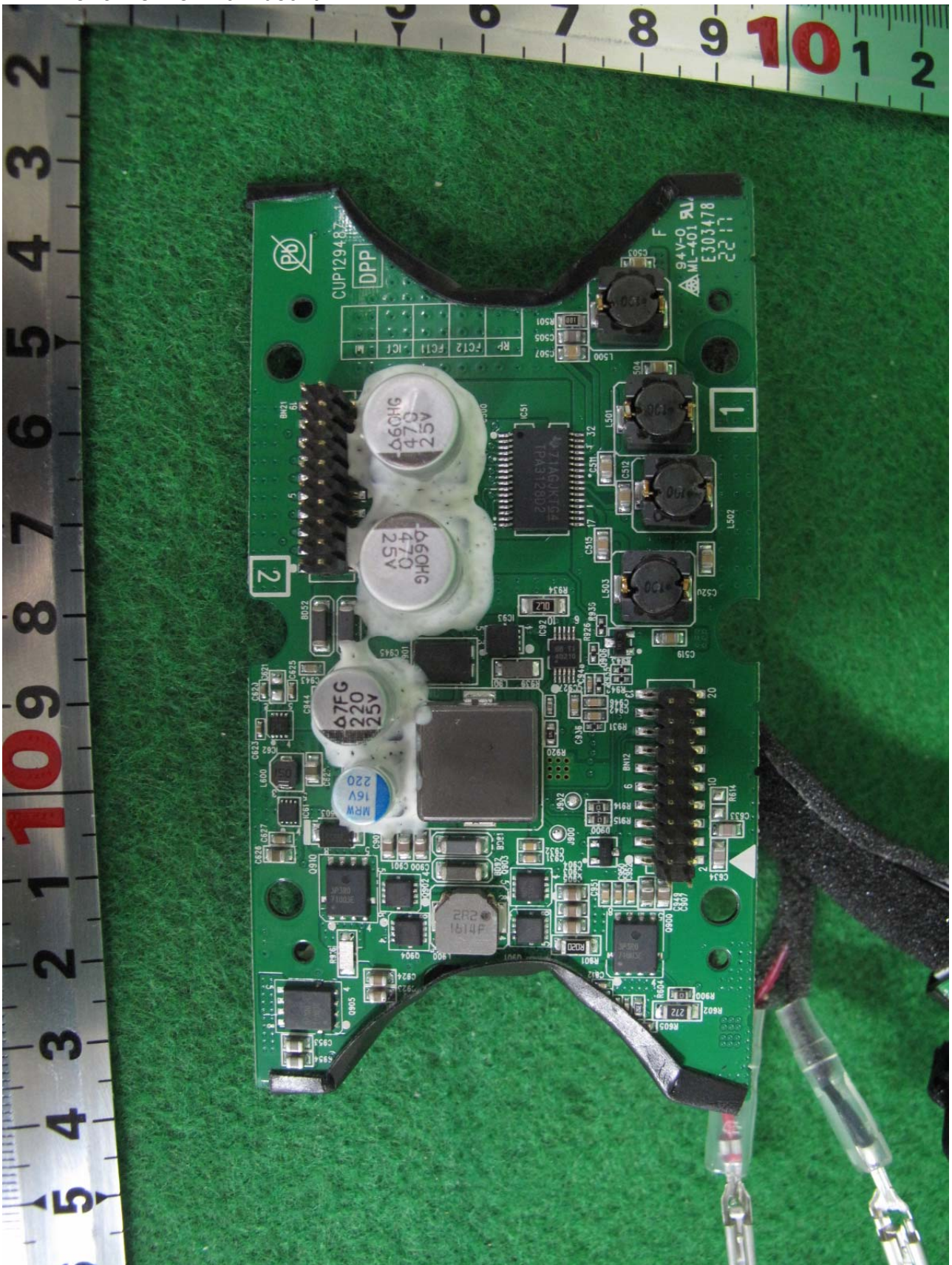
**Left View of EUT**



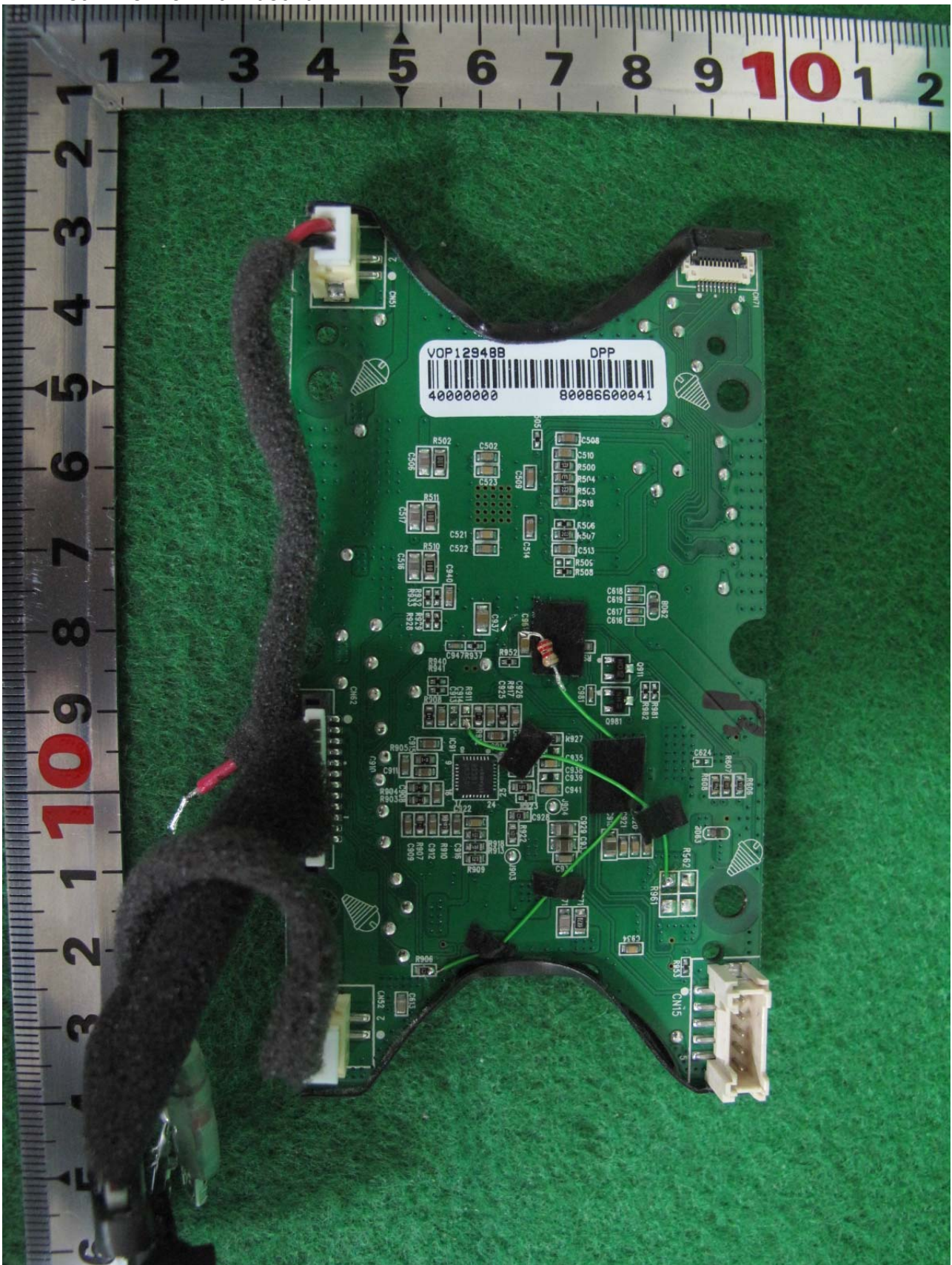
**Right View of EUT**



Front View of Mainboard

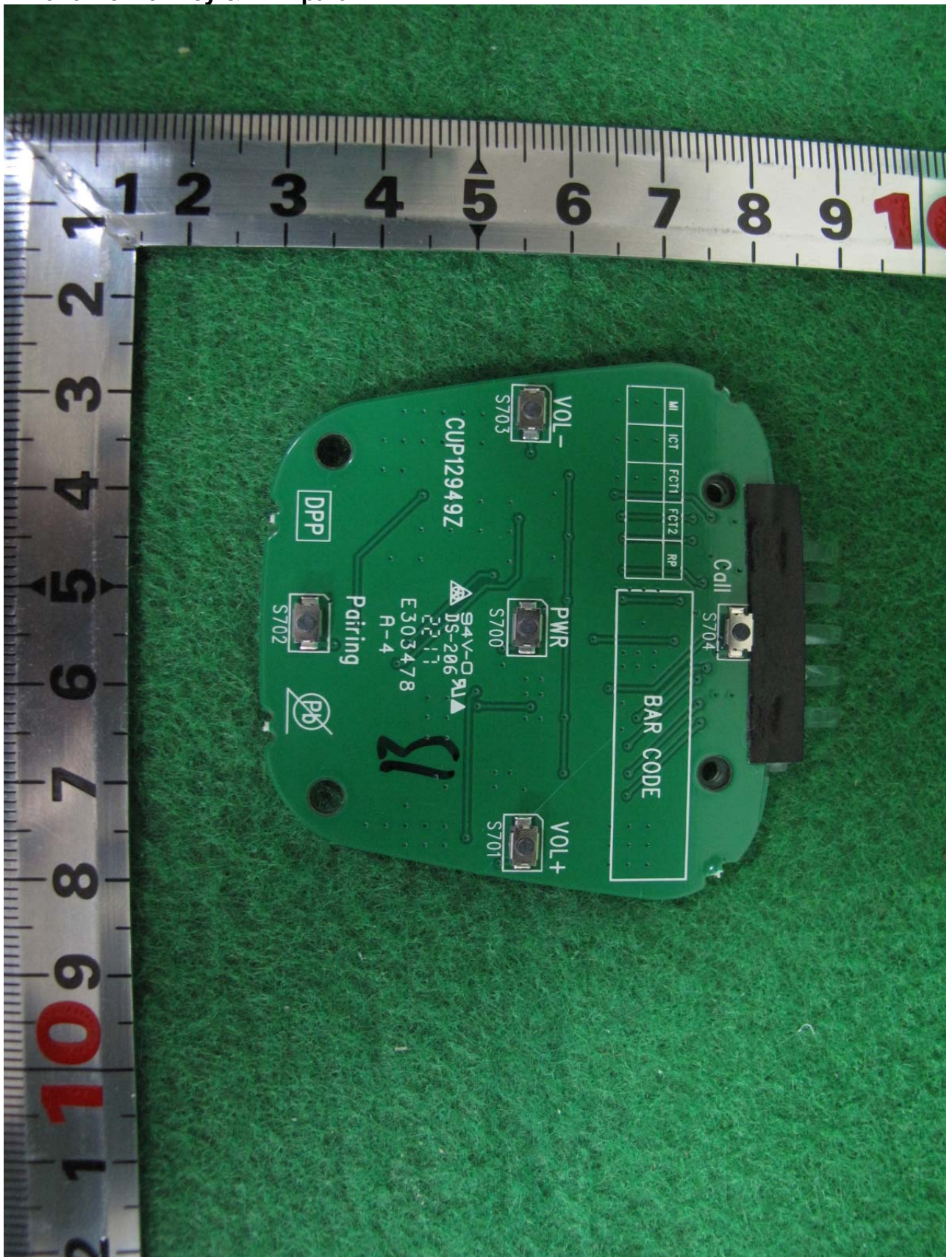


Rear View of Mainboard

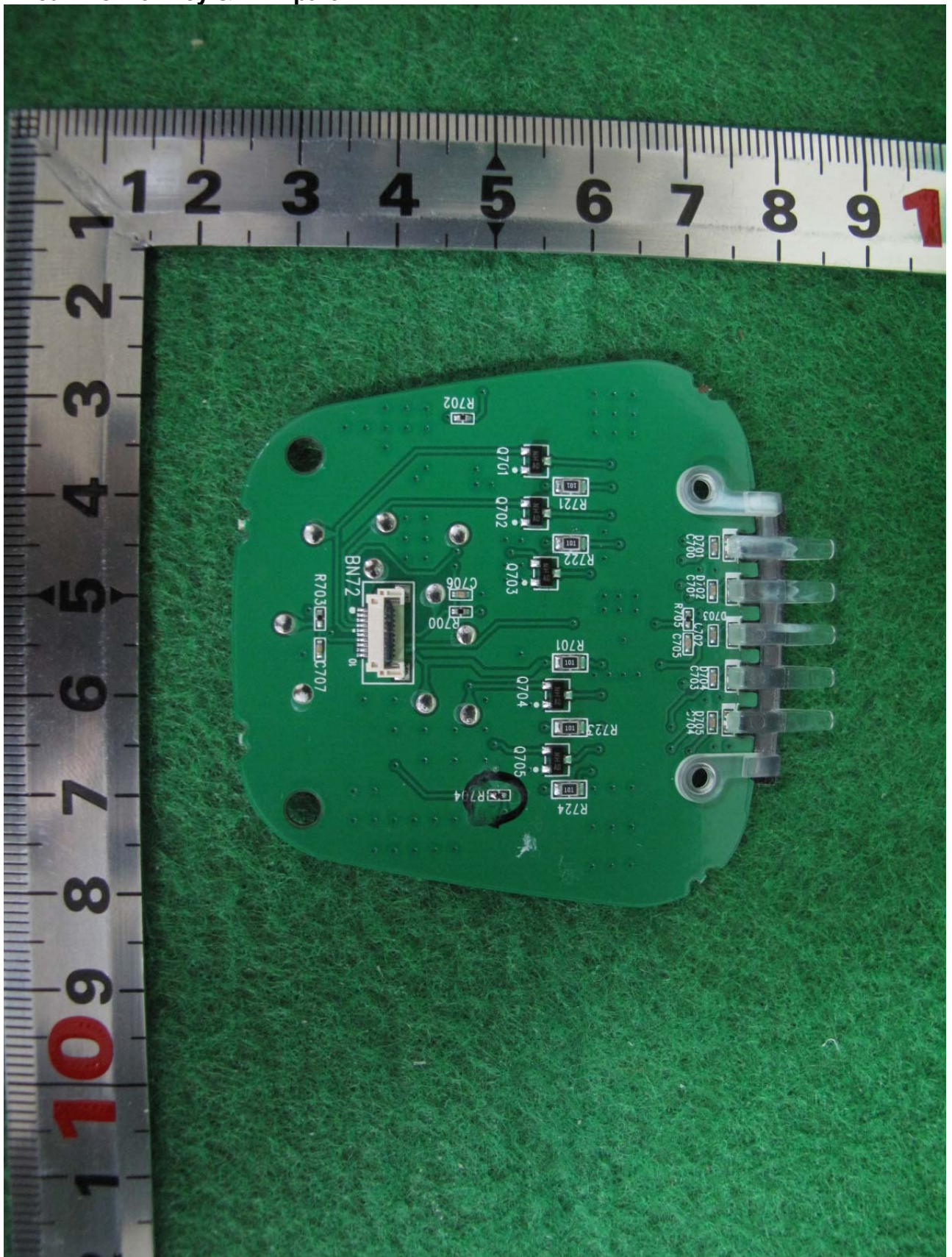




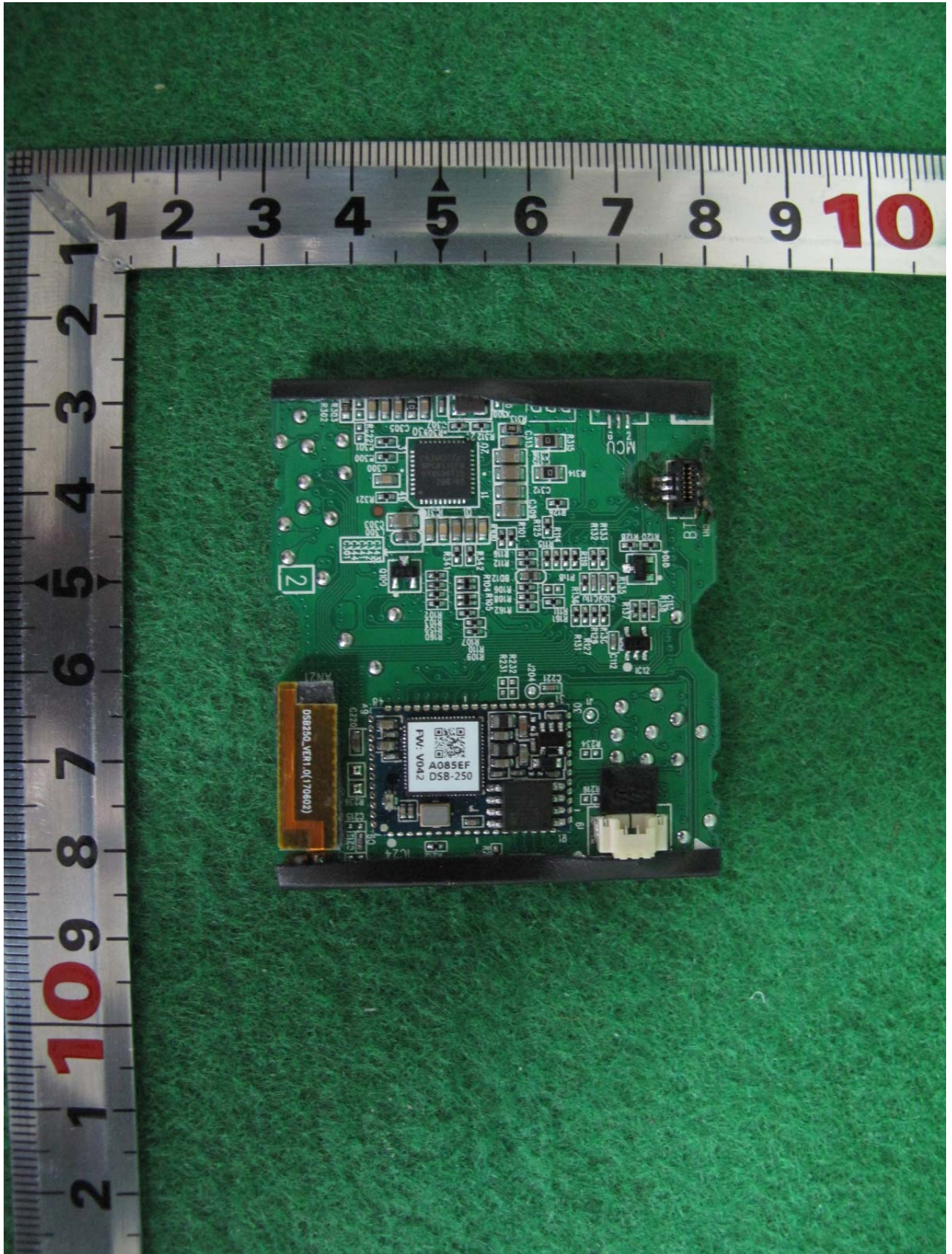
Front View of Key & LED part



Rear View of Key & LED part



Front View of RF board



Rear View of RF board

