

DMABTM8811

Bluetooth Adapter Card

OEM/Integrators Installation Manual

Version 1.0
February 7, 2014

STATEMENT and Warning



This device complies with Part 15 of the FCC Rules. Operation is subject to the following two conditions: (1) This device may not cause harmful interference, and (2) this device must accept any interference received, including interference that may cause undesired operation.

FCC Caution: Any changes or modifications not expressly approved by the party responsible for compliance could void the user's authority to operate this equipment.

This transmitter must not be co-located or operating in conjunction with any other antenna or transmitter.

FCC RF Radiation Exposure Statement

This equipment complies with FCC radiation exposure limits set forth for an uncontrolled environment. This equipment should be installed and operated with minimum distance 20cm between the radiator & your body.

This equipment has been tested and found to comply with the limits for a Class B digital device, pursuant to part 15 of the FCC Rules. These limits are designed to provide reasonable protection against harmful interference in a residential installation. This equipment generates uses and can radiate radio frequency energy and, if not installed and used in accordance with the instructions, may cause harmful interference to radio communications. However, there is no guarantee that interference will not occur in a particular installation. If this equipment does cause harmful interference to radio or television reception, which can be determined by turning the equipment off and on, the user is encouraged to try to correct the interference by one or more of the following measures:

- Reorient or relocate the receiving antenna.
- Increase the separation between the equipment and receiver.
- Connect the equipment into an outlet on a circuit different from that to which the receiver is connected.
- Consult the dealer or an experienced radio/TV technician for help.

IC

This device complies with Industry Canada license-exempt RSS standard(s). Operation is subject to the following two conditions: (1) this device may not cause interference, and (2) this device must accept any interference, including interference that may cause undesired operation of the device.

This equipment complies with IC radiation exposure limits set forth for an uncontrolled environment. This equipment should be installed and operated with minimum distance 20cm between the radiator and your body.

French:

Cet appareil radio est conforme au CNR-210 d'Industrie Canada. L'utilisation de ce dispositif est

autorisée seulement aux deux conditions suivantes : (1) il ne doit pas produire de brouillage, et (2)

l'utilisateur du dispositif doit être prêt à accepter tout brouillage radioélectrique reçu, même si ce

brouillage est susceptible de compromettre le fonctionnement du dispositif.

Cet équipement est conforme aux limites d'exposition aux rayonnements IC établies pour un environnement non contrôlé. Cet équipement doit être installé et utilisé avec un minimum de 20cm de distance entre la source de rayonnement et votre corps.

This device is intended only for OEM integrators under the following conditions:

The antenna must be installed such that 20 cm is maintained between the antenna and users, and The transmitter module may not be co-located with any other transmitter or antenna. As long as 2 conditions above are met, further transmitter test will not be required. However, the OEM integrator is still responsible for testing their end-product for any additional compliance requirements required with this module installed

IMPORTANT NOTE: In the event that these conditions cannot be met (for example certain laptop configurations or co-location with another transmitter), then the FCC authorization is no longer considered valid and the FCC ID cannot be used on the final product. In these circumstances, the OEM integrator will be responsible for re-evaluating the end product (including the transmitter) and obtaining a separate FCC authorization.

End Product Labeling

This transmitter module is authorized only for use in device where the antenna may be installed such that 20 cm may be maintained between the antenna and users. The final end product must be labeled in a visible area with the following:

“Contains FCC ID:MBBDMABTM8811”,

“contains IC: 11657A-DMABTM8811”. The grantee's FCC ID can be used only when all FCC/ IC compliance requirements are met.

Manual Information To the End User

The OEM integrator has to be aware not to provide information to the end user regarding how to install or remove this RF module in the user's manual of the end product which integrates this module.

The Grantee must instruct the OEM/Integrator to include statements as required per Parts 15.19 and 15.21.

An attestation that the Grantee will provide guidance to the host manufacturer for compliance to Part 15, subpart B requirements.

The modular transmitter must comply with any specific rules or operating requirements that ordinarily apply to a complete transmitter and the manufacturer must provide adequate instructions along with the module to explain any such requirement.

CONTENTS

Package Contents	5
Chapter 1 Introduction	6
1.1 Overview of the Product	6
1.2 Features	6
Chapter 2 Installation Guide (For Consumer Electronics)	7
2.1 Hardware Installation	7
2.2 Software Installation	7
2.3 Pin Definitions.....	8
2.4 Mechanical Dimension.....	9
Appendix A: Specifications	10

Package Contents

The following items should be found in your package:

DMABTM8811 Bluetooth Adapter Card

Conventions:

The 'Module' mentioned in this user guide stands for DMABTM8811 Bluetooth Adapter Card without any explanation.

Chapter 1 Introduction

Thank you for choosing the **MB8811C0 Bluetooth Adapter Card!**

1.1 Overview of the Product

DMABTM8811 is a fully integrated Bluetooth module. It is based on CSR's Bluecore 8811 chip with specific interface design to meet ANAM Electronics's needs. DMABTM8811 is compatible with Bluetooth specification version 3.0. It integrates RF, Baseband controller, etc., a completed Bluetooth subsystem.

1.2 Features

- Operation Range (Class II) : 10 meters
- Fully Compatible with Bluetooth Specification 3.0
- Dual-mode Bluetooth / Bluetooth low energy
- Operating Temperature Range : -10°C ~ 70°C
- Operating VDD Range : 3.0 V- 3.6 V Normal: 3.3 V
- Interface : UART
- Internal Antenna
- RoHS Compliant

Chapter 2 Linux Installation Guide (For Consumer Electronics)

2.1 Hardware Installation

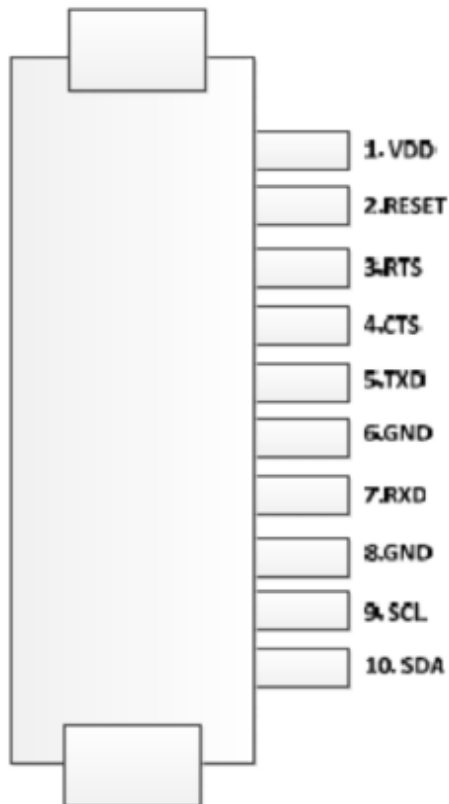
For the Consumer Electronics products which use DMABTM8811, it must provide a corresponding connector for the module. After connecting the module to the device, the hardware installation is finished.

2.2 Software Installation

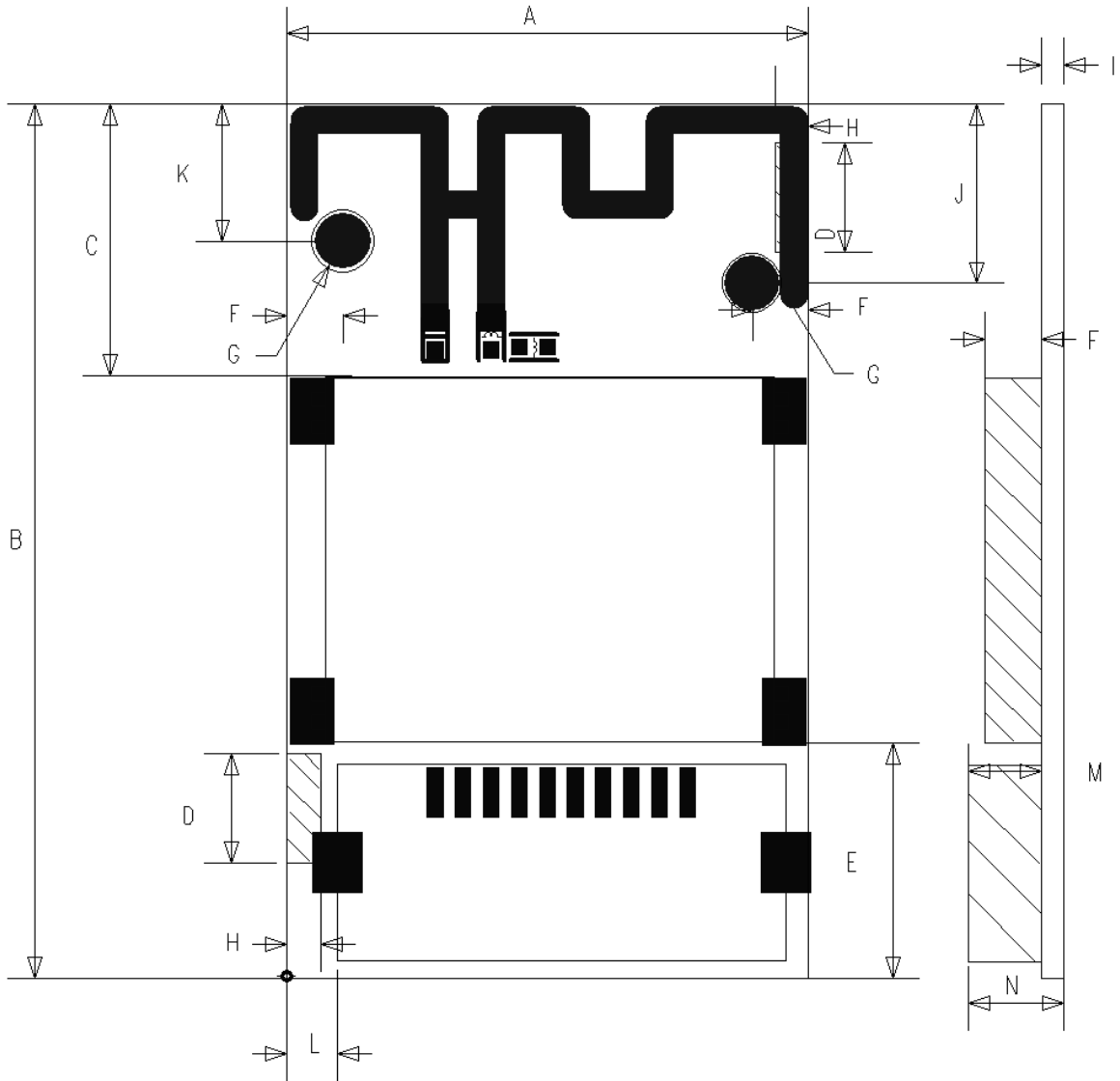
For the Consumer Electronics products, the Linux Driver of DMABTM8811 is embedded in default. So the module is a plug and play device. After connecting the module to the device, DMABTM8811 will work well.

2.3 Pin Definitions

No	Pin Name	I/O	Description
1	VDD	I	Positive Input for the internal regulator (3.0 ~ 3.6V)
2	RESET	I	Reset if low. Input debounced so must be low for >5ms to cause a reset
3	RTS	O	UART Request to Send. Active-low request.
4	CTS	I	Bluetooth UART Clear to Send.Active-low clear.
5	TXD	O	Bluetooth UART Serial Output.
6	GND	-	Ground.
7	RXD	I	Bluetooth UART Serial Input.
8	GND	-	Ground.
9	SXL	O	I2C interface Clock
10	SDA	I/O	I2C interface DATA



2.4 Mechanical Dimension



Mark	Dimension	Mark	Dimension	Mark	Dimension	Mark	Dimension	Mark	Dimension
A	18.60±0.5	D	3.90±0.2	G	2.0±0.2	J	6.4±0.2	M	2.6±0.2
B	31.20±0.5	E	8.40±0.3	H	1.2±0.2	K	4.9±0.2	N	3.4±0.2
C	9.70±0.3	F	2.0±0.3	I	0.8±0.1	L	1.80±0.3		

(Unit : mm)

Appendix A: Specifications

Normal	
Interface	UART
Operating System	Windows XP, Vista, 7, Linux
Radio Data Rate	Up to 3Mbps
Modulation	GFSK, $\pi/4$ DQPSK, 8DPSK
Frequency	2.402 ~ 2.480GHz
Channel Number	79Ch
Antenna	Integrated, PIFA
Safety & Emissions	FCC/ IC
Environmental and Physical	
Operating Temp	-40°C ~ 85°C
Storage Temp	-10°C ~ 70°C
Humidity	10% ~ 90% RH, Non-condensing