

Test Laboratory: Compliance Certification Services Inc.

System check_ MSL750_20120922

Communication System: CW; Frequency: 750 MHz; Duty Cycle: 1:1
Medium parameters used (interpolated): $f = 750$ MHz; $\sigma = 0.935$ mho/m; $\epsilon_r = 54.892$; $\rho = 1000$ kg/m³
Phantom section: Flat Section
Air Temperature: 24.2 deg C; Liquid Temperature: 23.2 deg C
Area Scan Find Secondary Maximum Within 2dB and with a peak SAR value greater than 0.0012W/kg

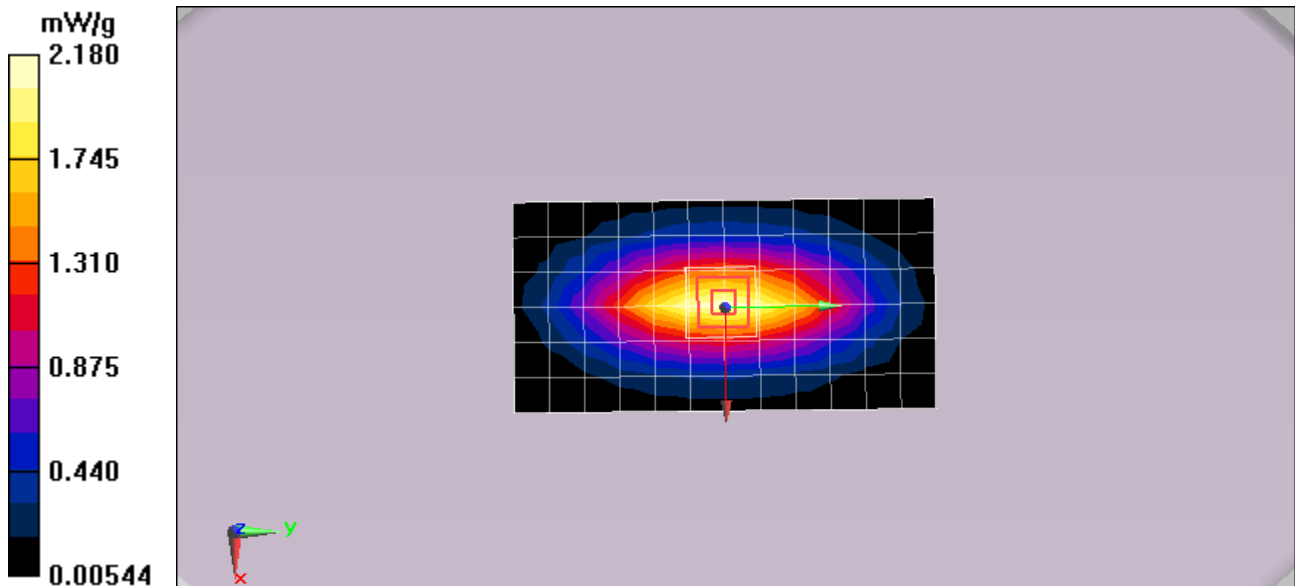
DASY Configuration:

- Probe: EX3DV4 - SN3665; ConvF(9.9, 9.9, 9.9); Calibrated: 2012/4/27;
- Sensor-Surface: 4mm (Mechanical Surface Detection), Sensor-Surface: 0mm (Fix Surface)
- Electronics: DAE4 Sn877; Calibrated: 2012/3/16
- Phantom: ELI 4.0; Type: QDOVA001BA; Serial: 1056
- Measurement SW: DASY52, Version 52.8 (1)SEMCAD X Version 14.6.5 (6469)

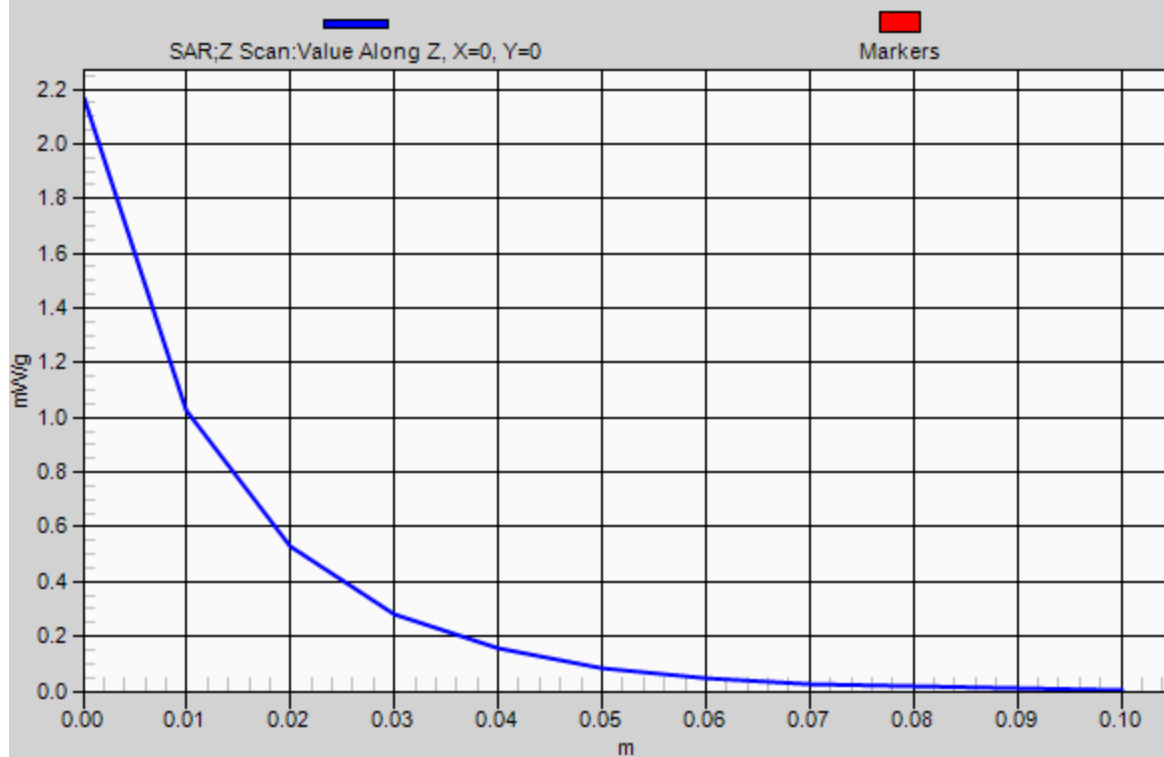
Configuration/Pin=250mW,d=15mm/Area Scan (7x13x1): Measurement grid: dx=15mm, dy=15mm
Maximum value of SAR (measured) = 2.18 mW/g

Configuration/Pin=250mW,d=15mm/Zoom Scan (7x7x7)/Cube 0: Measurement grid: dx=5mm, dy=5mm, dz=5mm
Reference Value = 48.492 V/m; Power Drift = -0.05 dB
Peak SAR (extrapolated) = 2.971 mW/g
SAR(1 g) = 2.15 mW/g; SAR(10 g) = 1.42 mW/g
Maximum value of SAR (measured) = 2.17 mW/g

Configuration/Pin=250mW,d=15mm/Z Scan (1x1x11): Measurement grid: dx=20mm, dy=20mm, dz=10mm
Maximum value of SAR (measured) = 2.16 mW/g



SAR(x,y,z,f0)



Test Laboratory: Compliance Certification Services Inc.

System check_ MSL835_20120927

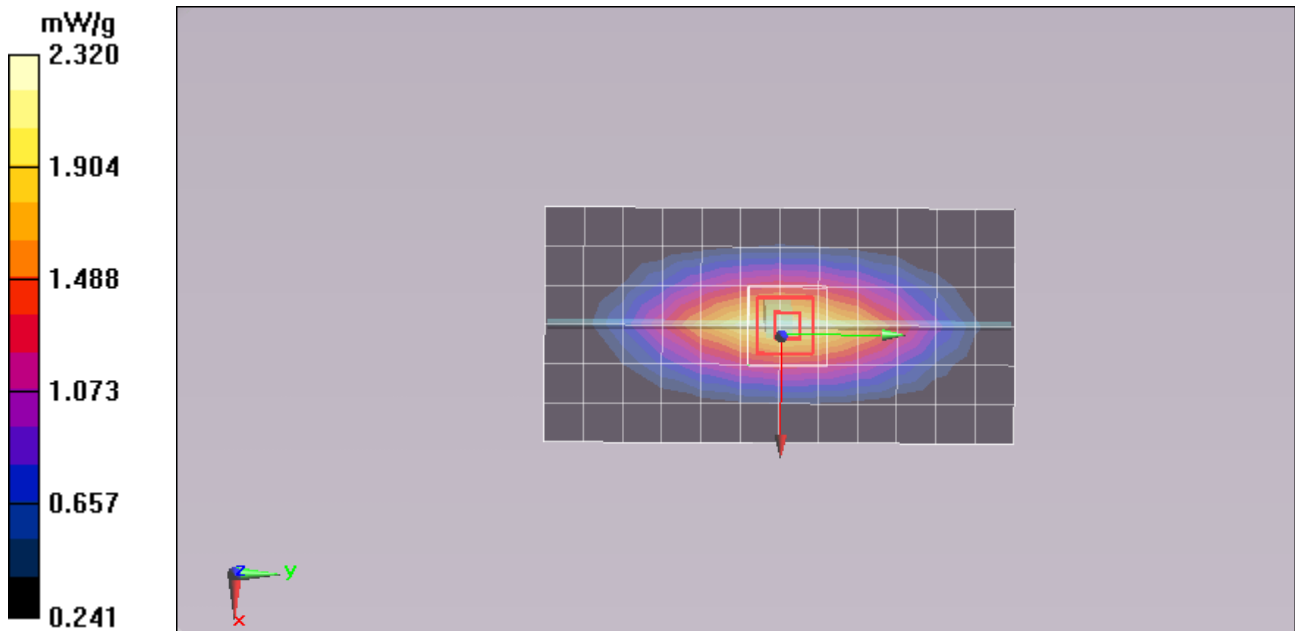
Communication System: CW; Frequency: 835 MHz; Duty Cycle: 1:1
Medium parameters used (interpolated): $f = 835$ MHz; $\sigma = 0.982$ mho/m; $\epsilon_r = 55.28$; $\rho = 1000$ kg/m³
Phantom section: Flat Section
Air Temperature: 24.2 deg C; Liquid Temperature: 23.2 deg C
Area Scan Find Secondary Maximum Within 2dB and with a peak SAR value greater than 0.0012W/kg

DASY Configuration:

- Probe: EX3DV4 - SN3665; ConvF(9.69, 9.69, 9.69); Calibrated: 2012/4/27;
- Sensor-Surface: 4mm (Mechanical Surface Detection)
- Electronics: DAE4 Sn877; Calibrated: 2012/3/16
- Phantom: ELI 4.0; Type: QDOVA001BA; Serial: 1056
- Measurement SW: DASY52, Version 52.8 (1)SEMCAD X Version 14.6.5 (6469)

Configuration/Pin=250mW,d=15mm/Area Scan (7x13x1): Measurement grid: dx=15mm, dy=15mm
Maximum value of SAR (measured) = 2.30 mW/g

Configuration/Pin=250mW,d=15mm/Zoom Scan (7x7x7)/Cube 0: Measurement grid: dx=5mm, dy=5mm, dz=5mm
Reference Value = 53.685 V/m; Power Drift = 0.075 dB
Peak SAR (extrapolated) = 3.322 mW/g
SAR(1 g) = 2.3 mW/g; SAR(10 g) = 1.49 mW/g
Maximum value of SAR (measured) = 2.32 mW/g



Test Laboratory: Compliance Certification Services Inc.

System check 20120927_BSL1900

Communication System: CW; Frequency: 1900 MHz; Duty Cycle: 1:1
Medium parameters used: $f = 1900$ MHz; $\sigma = 1.56$ mho/m; $\epsilon_r = 53.19$; $\rho = 1000$ kg/m³
Phantom section: Flat Section
Air Temperature: 24.2 deg C; Liquid Temperature: 23.2 deg C
Area Scan Find Secondary Maximum Within 2dB and with a peak SAR value greater than 0.0012W/kg

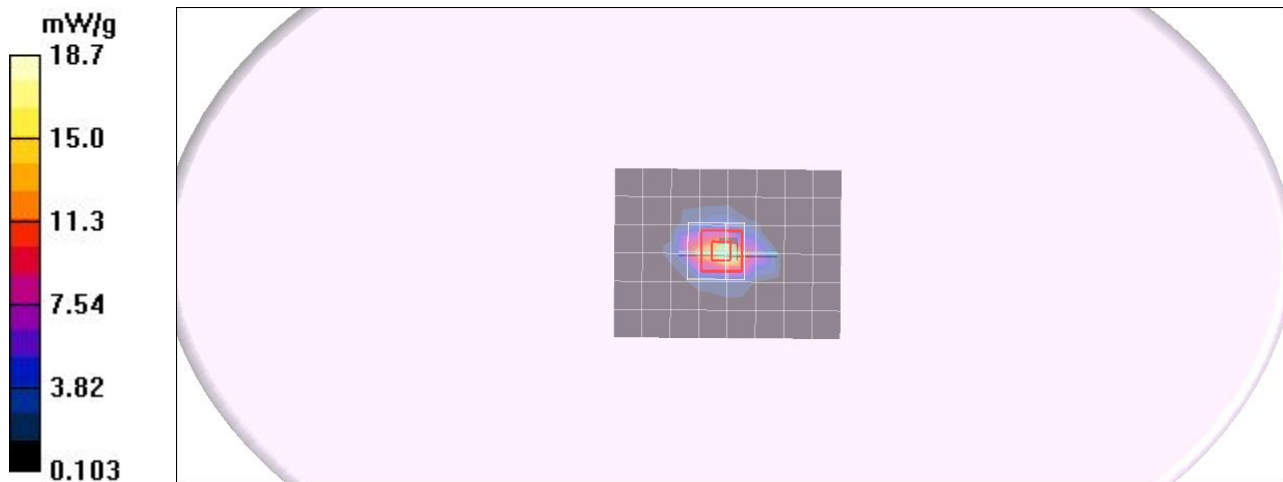
DASY4 Configuration:

- Probe: EX3DV4 - SN3554; ConvF(6.33, 6.33, 6.33);
- Sensor-Surface: 2.5mm (Mechanical Surface Detection)
- Electronics: DAE4 Sn558; Calibrated: 2012/7/19
- Phantom: Flat Phantom EL14.0; Type: QDOVA001BA; Serial: SN: 1052
- Measurement SW: DASY4, V4.7 Build 80; Postprocessing SW: SEMCAD, V1.8 Build 186

Pin=250mW, d=10mm/Area Scan (7x9x1): Measurement grid: dx=15mm, dy=15mm
Maximum value of SAR (measured) = 18 mW/g

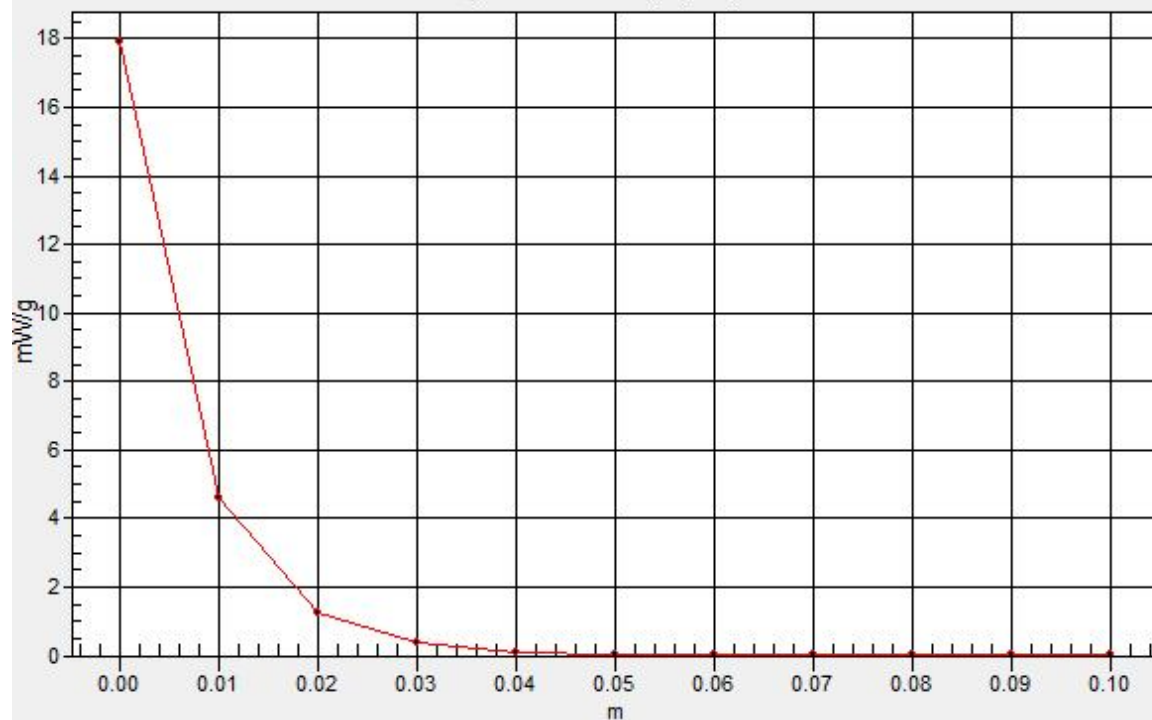
Pin=250mW, d=10mm/Zoom Scan (7x7x7)/Cube 0: Measurement grid: dx=5mm, dy=5mm, dz=5mm
Reference Value = 99.3 V/m; Power Drift = -0.064 dB
Peak SAR (extrapolated) = 28 W/kg
SAR(1 g) = 10 mW/g; SAR(10 g) = 5.15 mW/g
Maximum value of SAR (measured) = 18.3 mW/g

Pin=250mW, d=10mm/Z Scan (1x1x11): Measurement grid: dx=20mm, dy=20mm, dz=10mm
Maximum value of SAR (measured) = 18.2 mW/g



SAR(x,y,z,f0)

SAR; Z Scan: Value Along Z, X=0, Y=0



Test Laboratory: Compliance Certification Services Inc.

System check_ MSL750_20120925

Communication System: CW; Frequency: 750 MHz; Duty Cycle: 1:1
Medium parameters used (interpolated): $f = 750$ MHz; $\sigma = 0.935$ mho/m; $\epsilon_r = 54.892$; $\rho = 1000$ kg/m³
Phantom section: Flat Section
Air Temperature: 24.2 deg C; Liquid Temperature: 23.2 deg C
Area Scan Find Secondary Maximum Within 2dB and with a peak SAR value greater than 0.0012W/kg

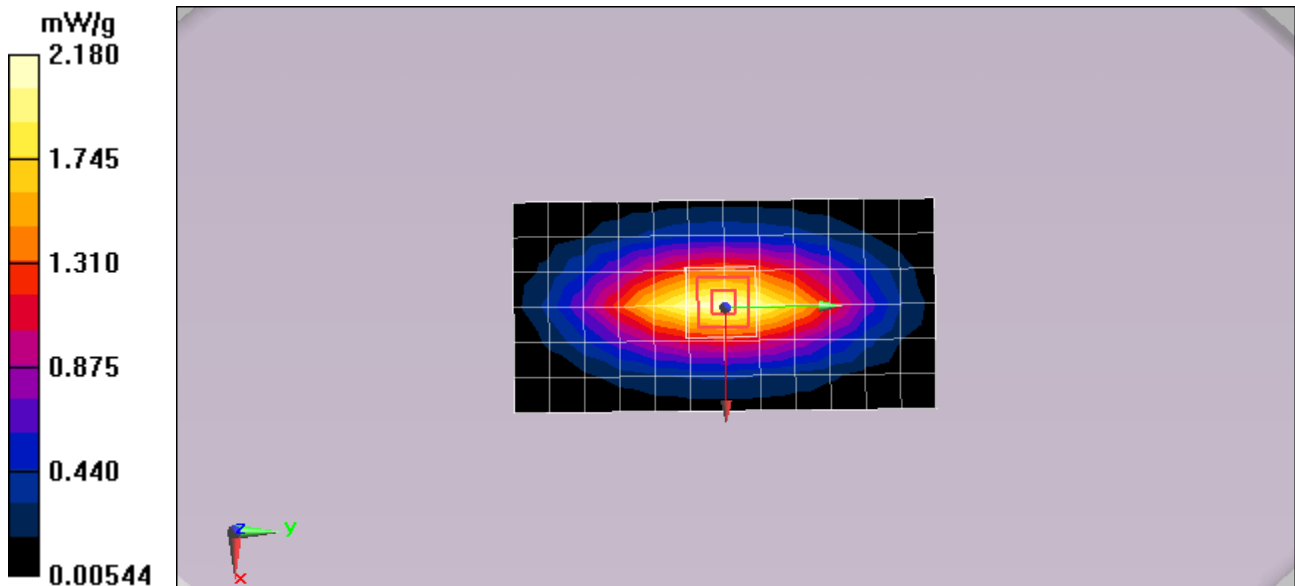
DASY Configuration:

- Probe: EX3DV4 - SN3665; ConvF(9.9, 9.9, 9.9); Calibrated: 2012/4/27;
- Sensor-Surface: 2.5mm (Mechanical Surface Detection), Sensor-Surface: 0mm (Fix Surface)
- Electronics: DAE4 Sn877; Calibrated: 2012/3/16
- Phantom: ELI 4.0; Type: QDOVA001BA; Serial: 1056
- Measurement SW: DASY52, Version 52.8 (1)SEMCAD X Version 14.6.5 (6469)

Configuration/Pin=250mW,d=15mm/Area Scan (7x13x1): Measurement grid: dx=15mm, dy=15mm
Maximum value of SAR (measured) = 2.22 mW/g

Configuration/Pin=250mW,d=15mm/Zoom Scan (7x7x7)/Cube 0: Measurement grid: dx=5mm, dy=5mm, dz=5mm
Reference Value = 50.113 V/m; Power Drift = -0.110 dB
Peak SAR (extrapolated) = 3.012 mW/g
SAR(1 g) = 2.11 mW/g; SAR(10 g) = 1.35 mW/g
Maximum value of SAR (measured) = 2.18 mW/g

Configuration/Pin=250mW,d=15mm/Z Scan (1x1x11): Measurement grid: dx=20mm, dy=20mm, dz=10mm
Maximum value of SAR (measured) = 2.18 mW/g



SAR(x,y,z,f0)

