

Appendix C: System Performance Check

Report Date : 02-Jun-2012(worst data)
By Operator : Dino Chen
DUT : Dipole
Frequency : 835.00 MHz
Max. Transmit Pwr : 1 W

APREL ALSAS-10U System Description

Phantom Data

Name : Universal Phantom
Type : ALS-P-UP-1

Tissue Data

Type : Body
Frequency : 835.00 MHz

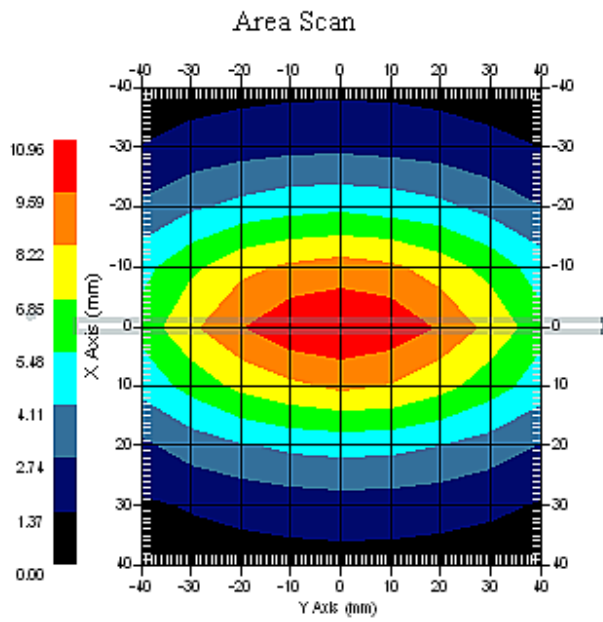
Probe Data

Name : E-field Probe
Model : ALS-E-020
Serial No. : 266
Last Calib. Date : 08-Aug-2011

Measurement Data

Crest Factor : 1
Scan Type : Complete
Tissue Temp. : 22.00 °C
Ambient Temp. : 21.70 °C
Area Scan : 9x9x1 : Measurement x=10mm, y=10mm, z=4mm
Zoom Scan : 5x5x8 : Measurement x=8mm, y=8mm, z=4mm
Separation : 1cm





1 gram SAR value : 10.285 W/kg
10 gram SAR value : 6.521 W/kg
Area Scan Peak SAR : 10.958 W/kg
Zoom Scan Peak SAR : 15.213 W/kg