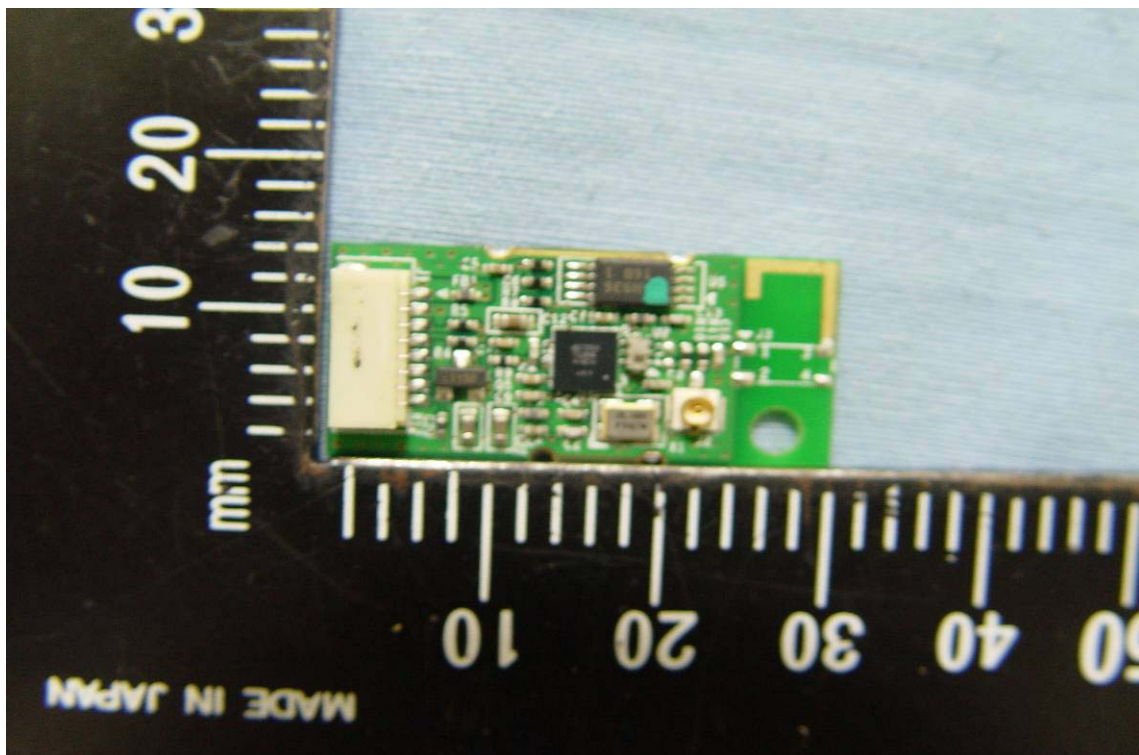
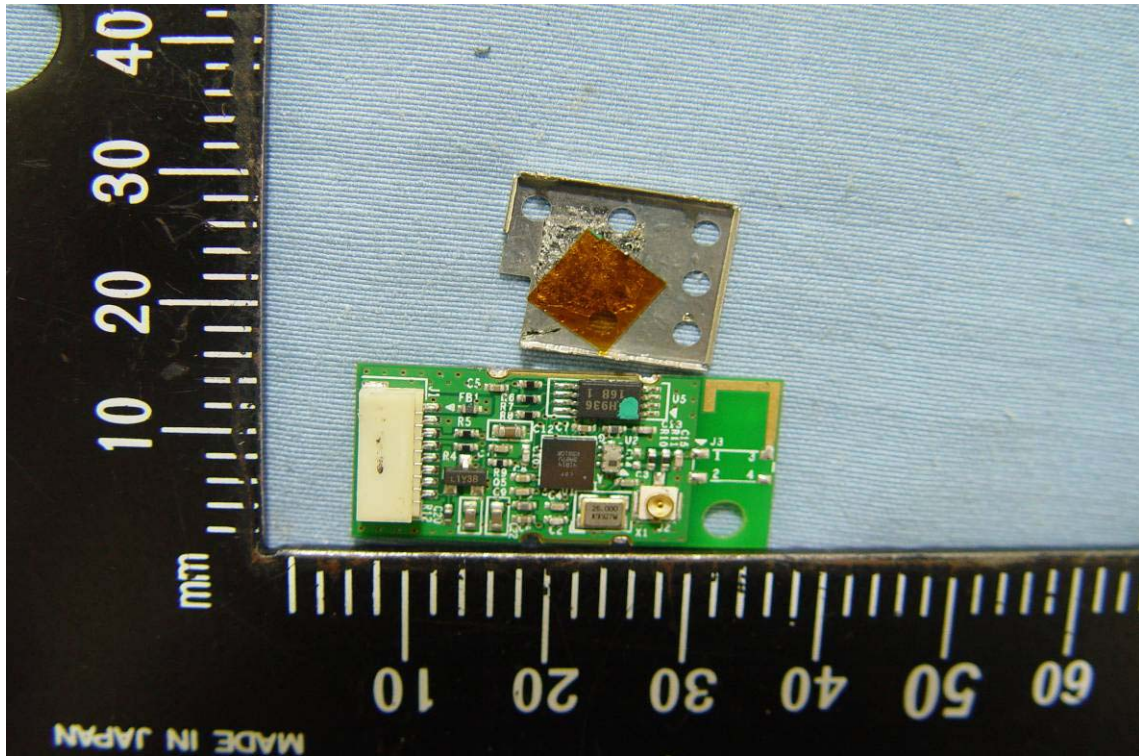
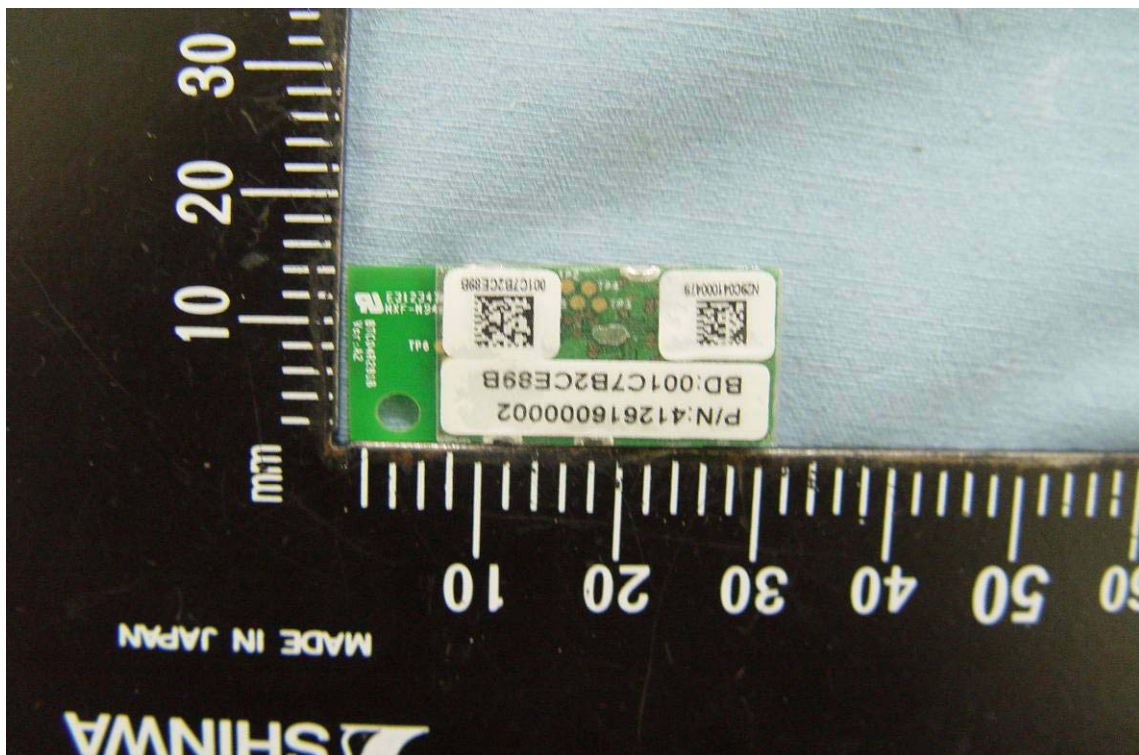
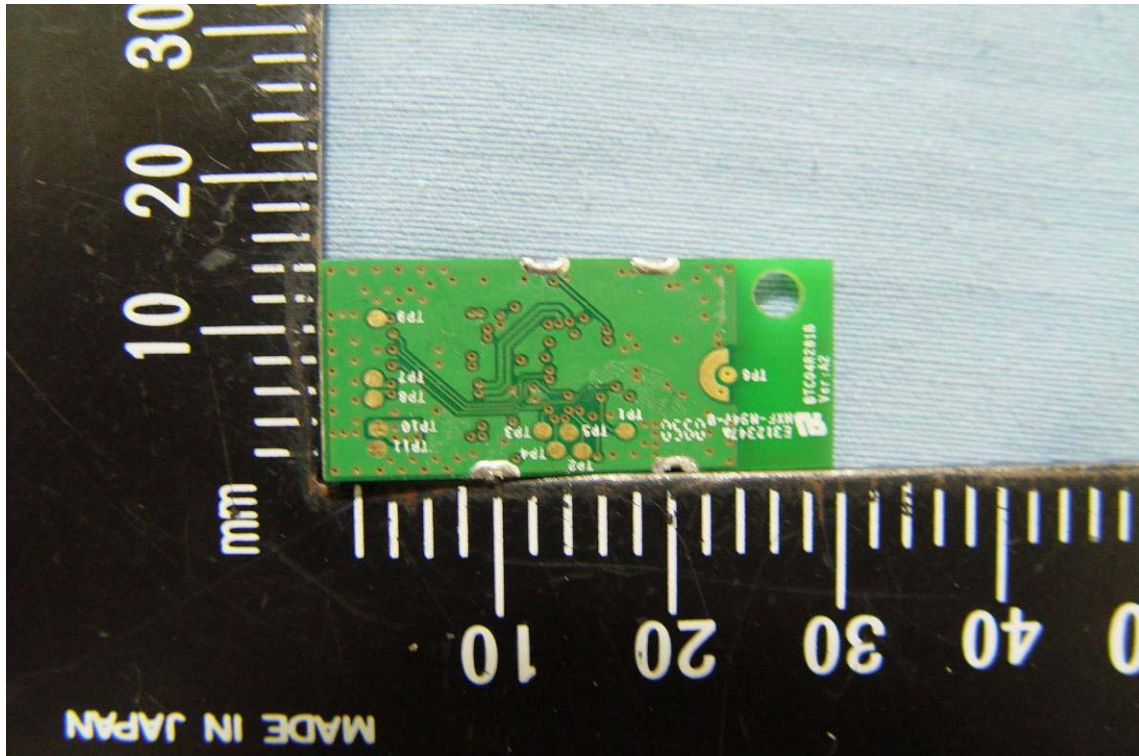




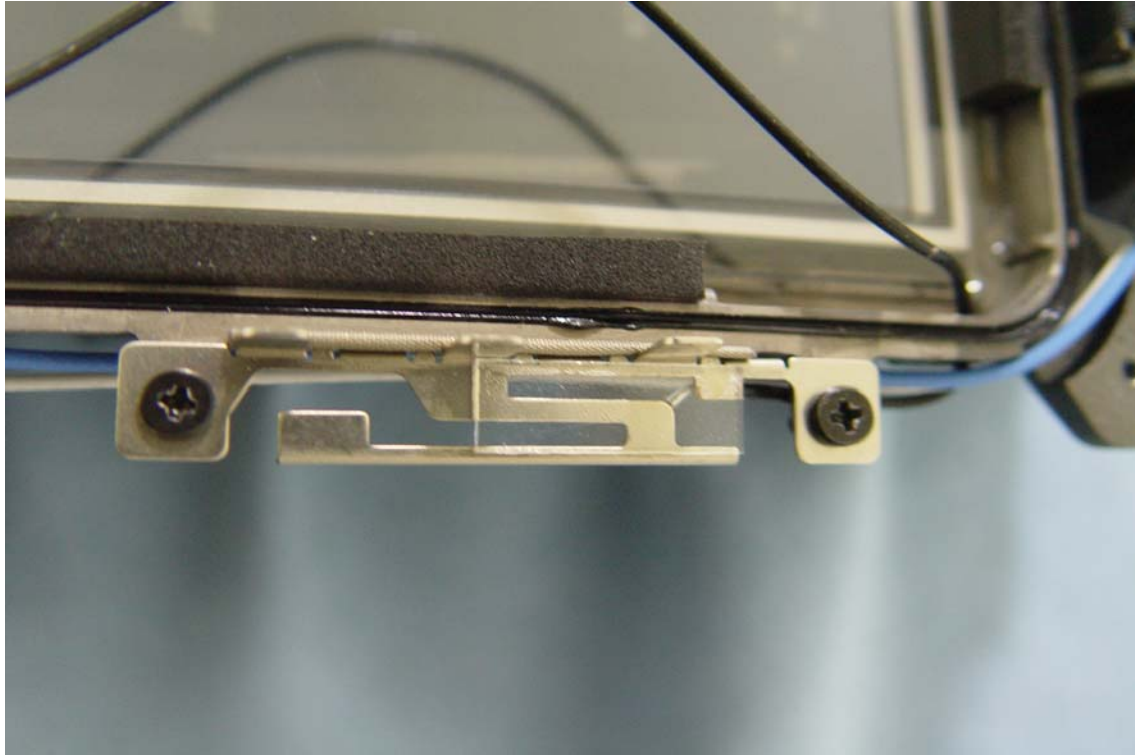
INTERNAL PHOTOGRAPHS OF EUT







BT Antenna



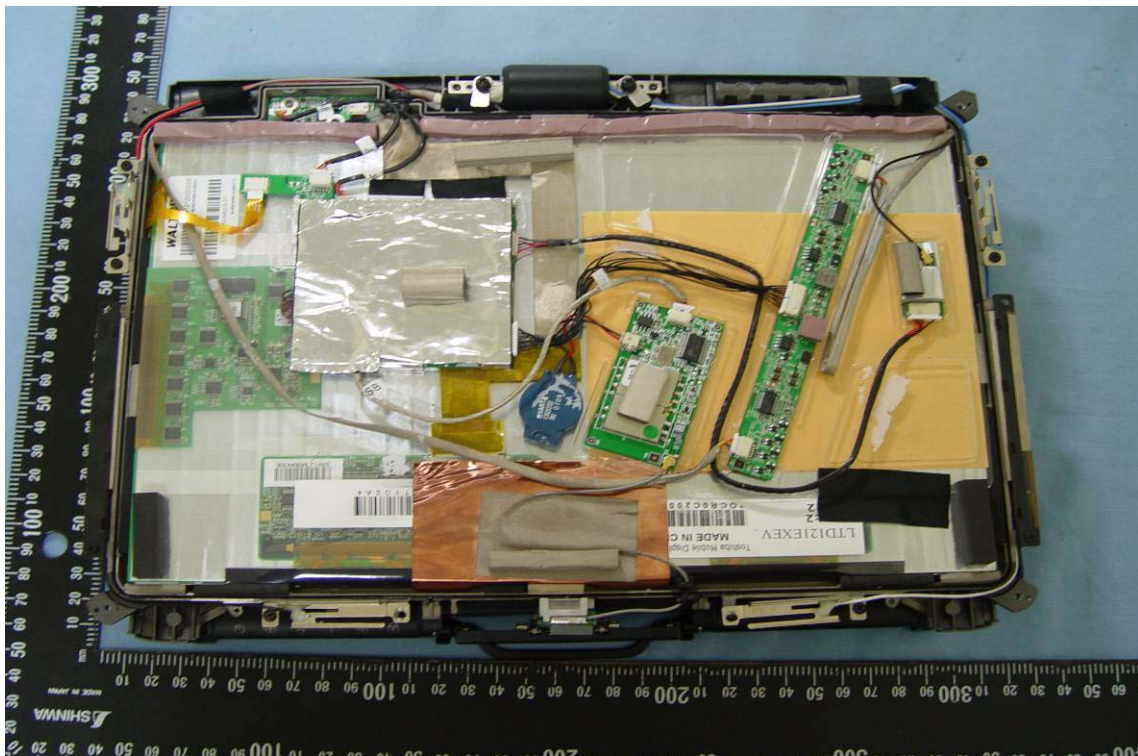


INTERNAL PHOTOGRAPHS OF SPECIFIC HOST PLATFORMS:

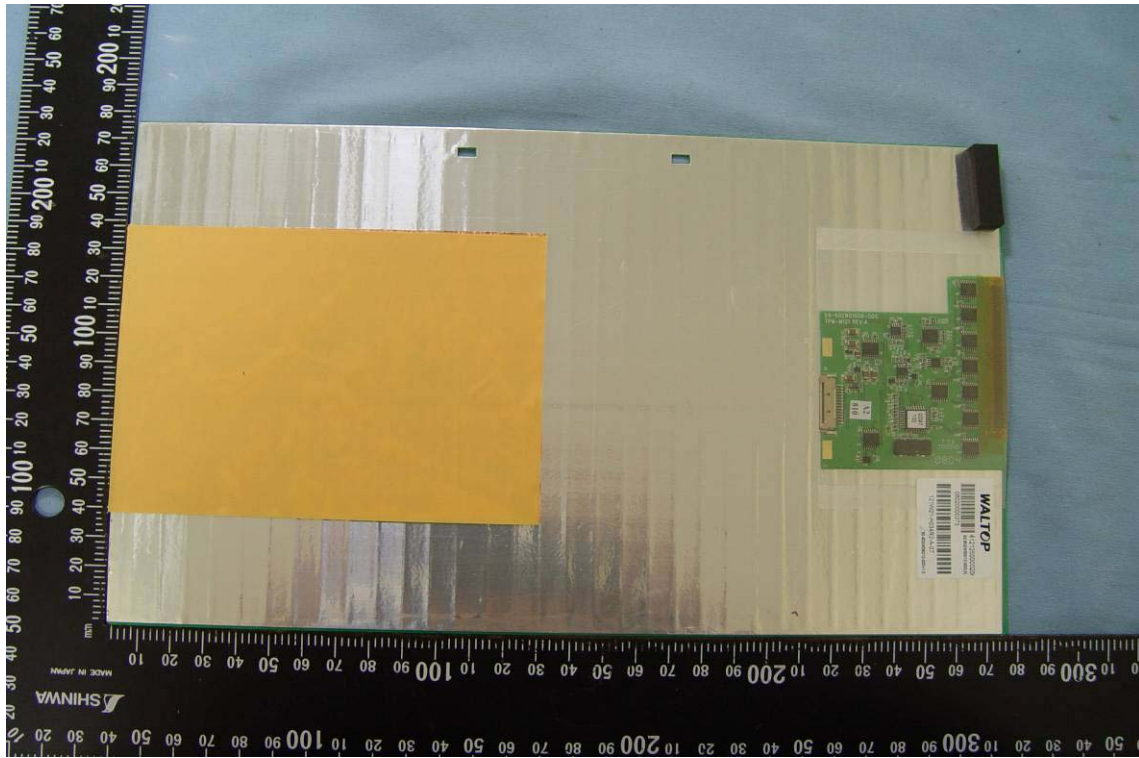
Remark: There are three kinds of host platforms for this BT limited module approval application. All the specification and layout between these three host platforms are identical except they come with different model numbers and panel size for marketing purposes. For these three host platforms, there are also possible to own a WLan module (FCC ID: MAU040; Model Number: WiFi Link 6200), WWan module (FCC ID: MAU039; Model Number: Gobi2) and a GPS module inside these three host platforms, however, either of this BT module, WLan module, and WWan module will be not able to transmit simultaneously for any kind of situation. This application is only an application of Limited Module Approval for this BT function.

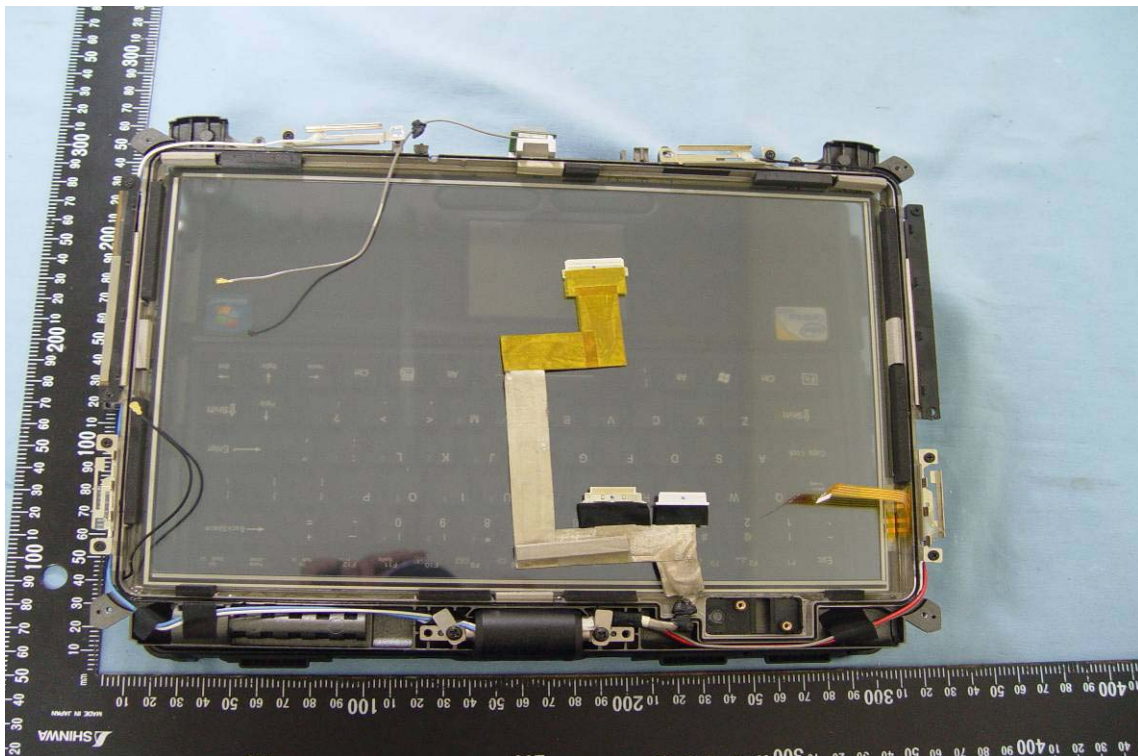
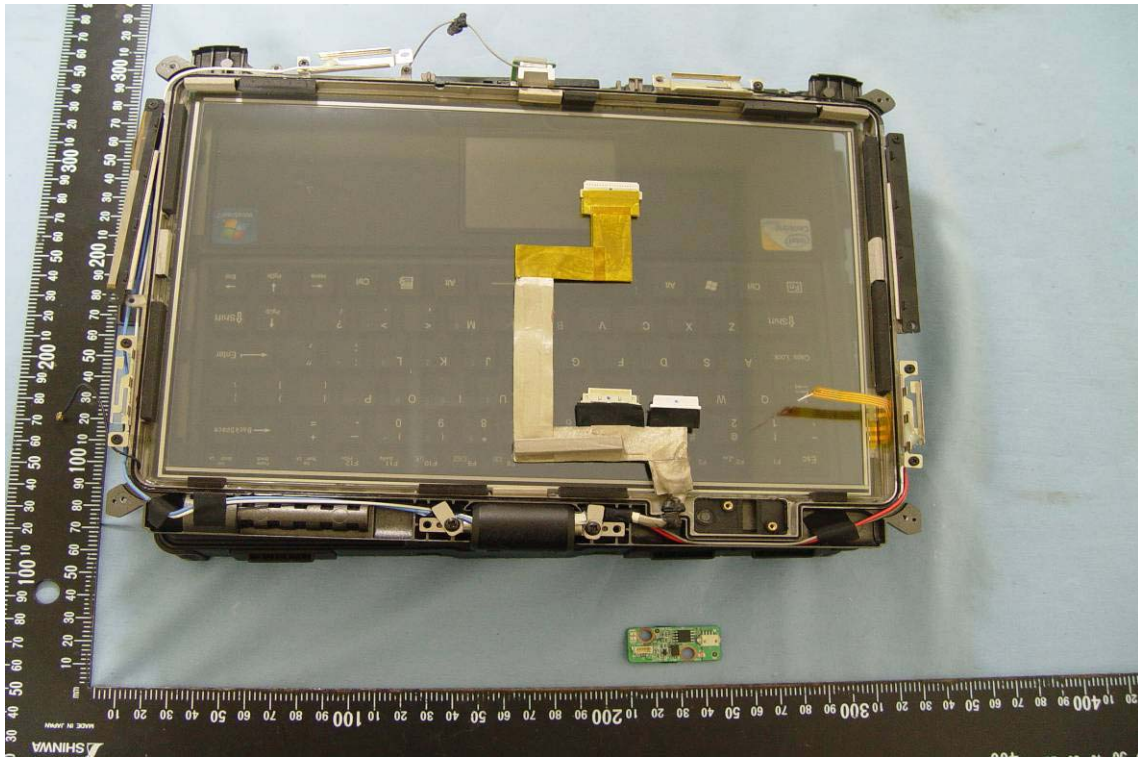


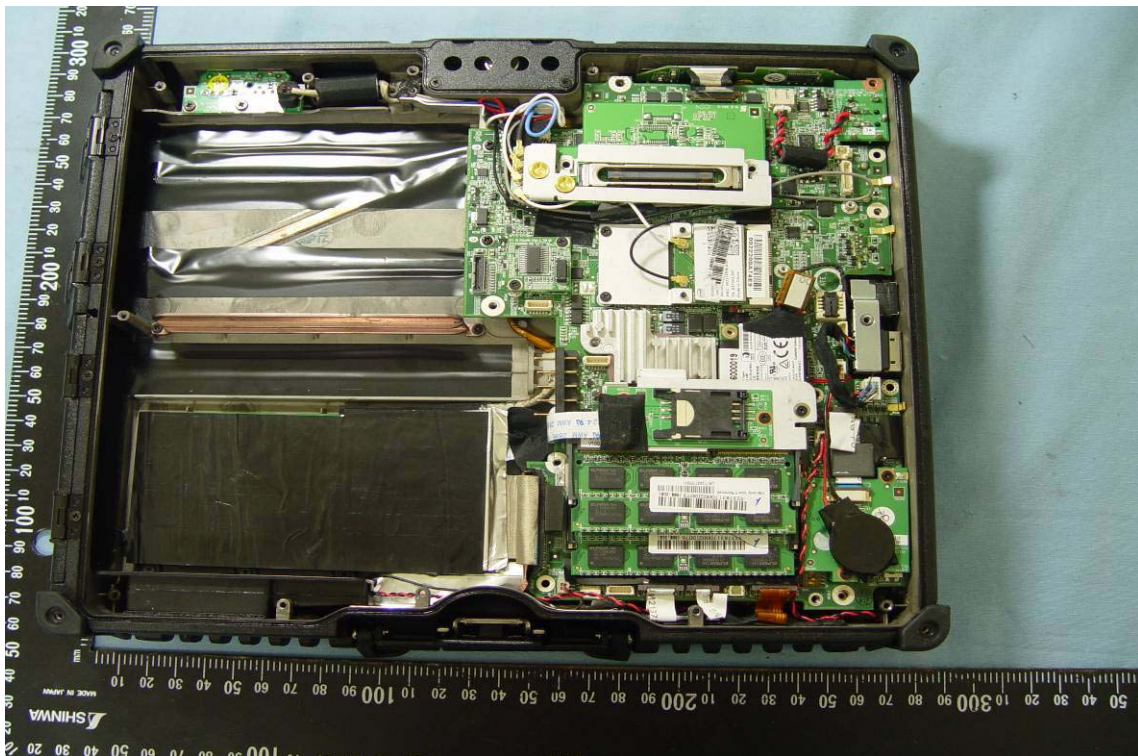
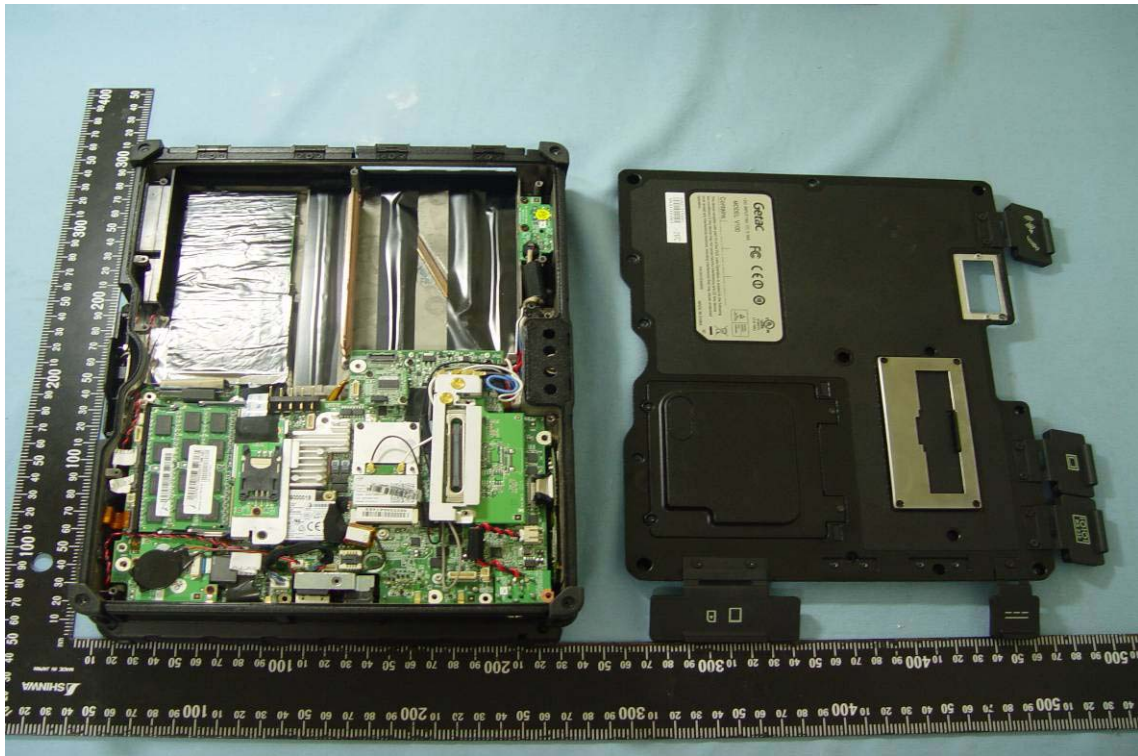
For V100-2x

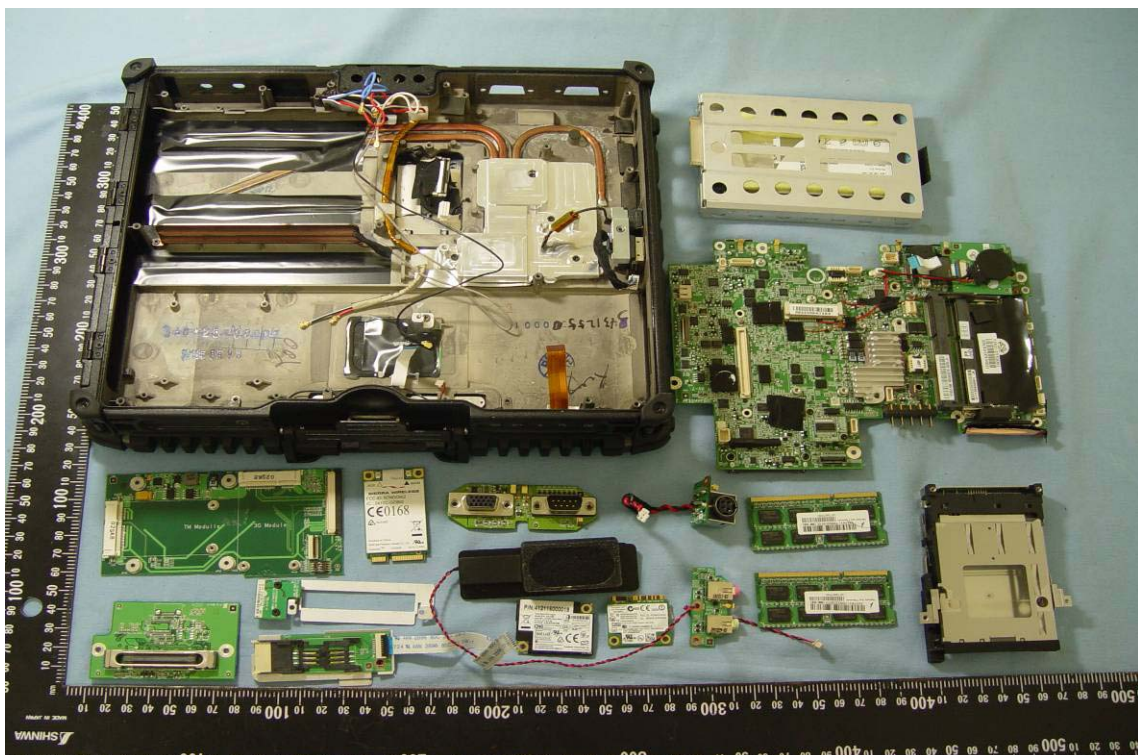
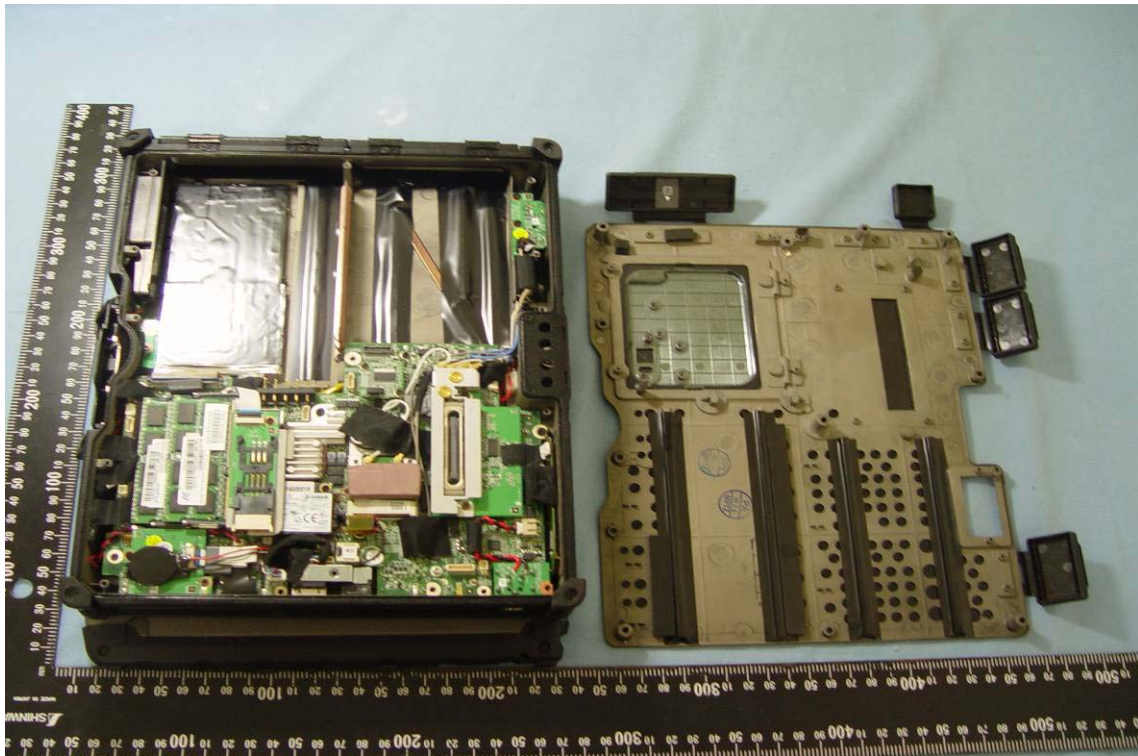


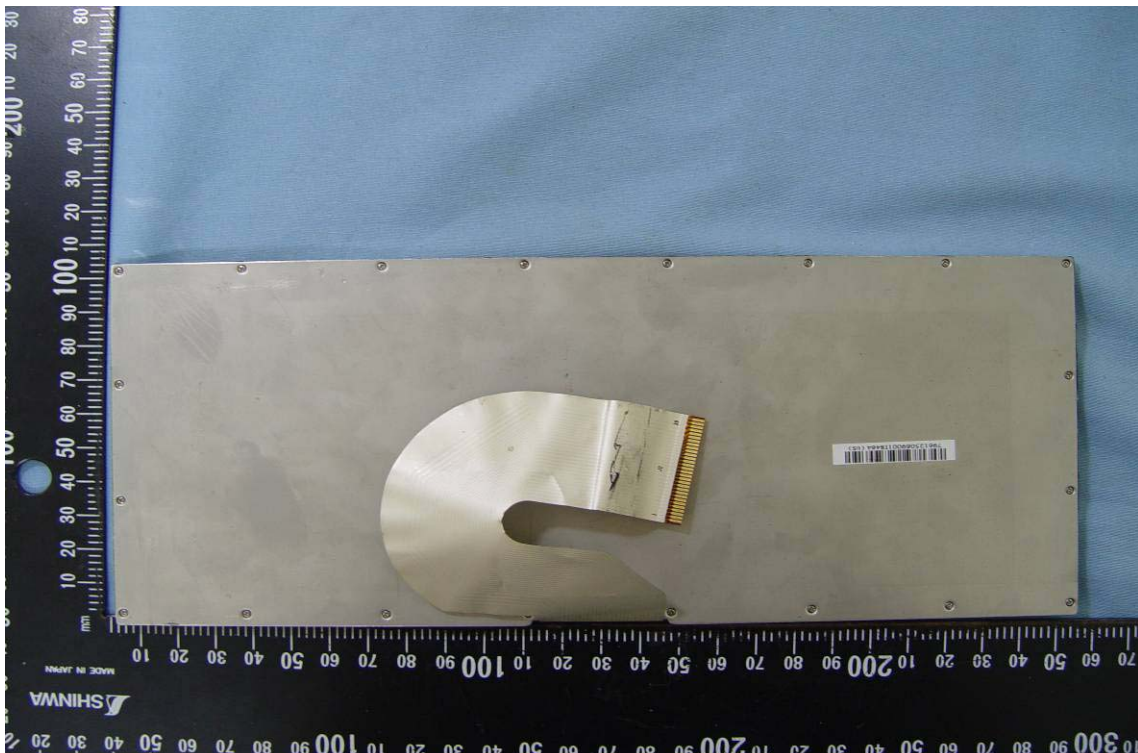






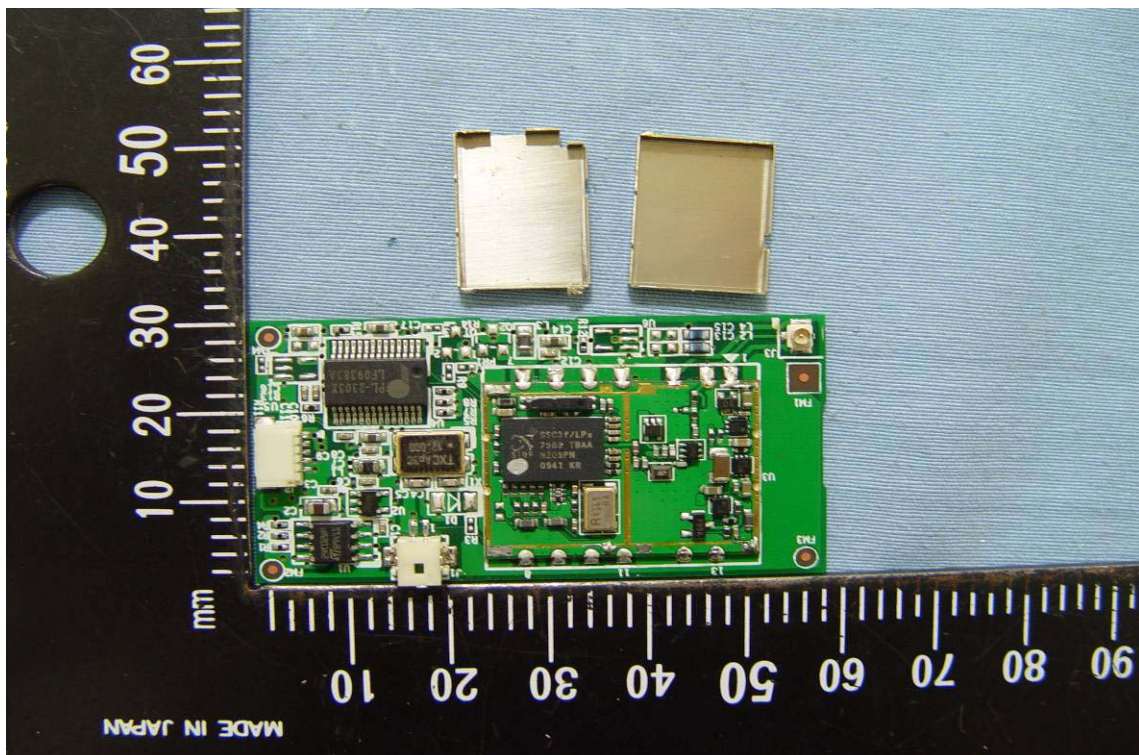
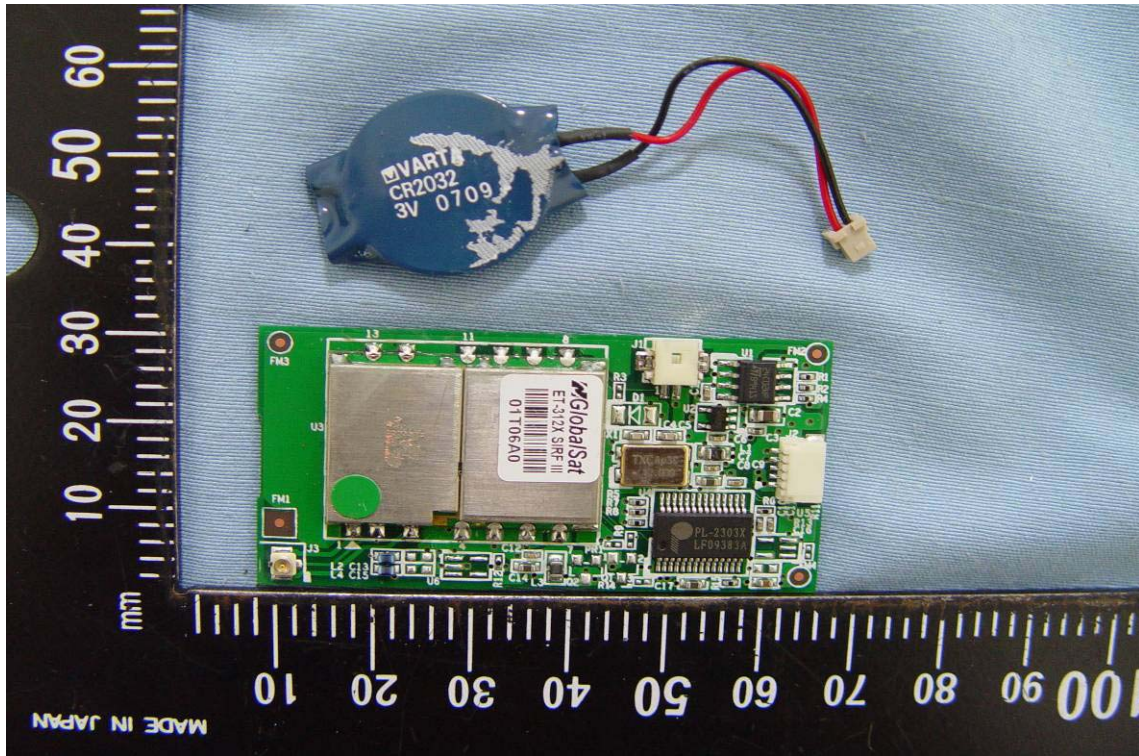


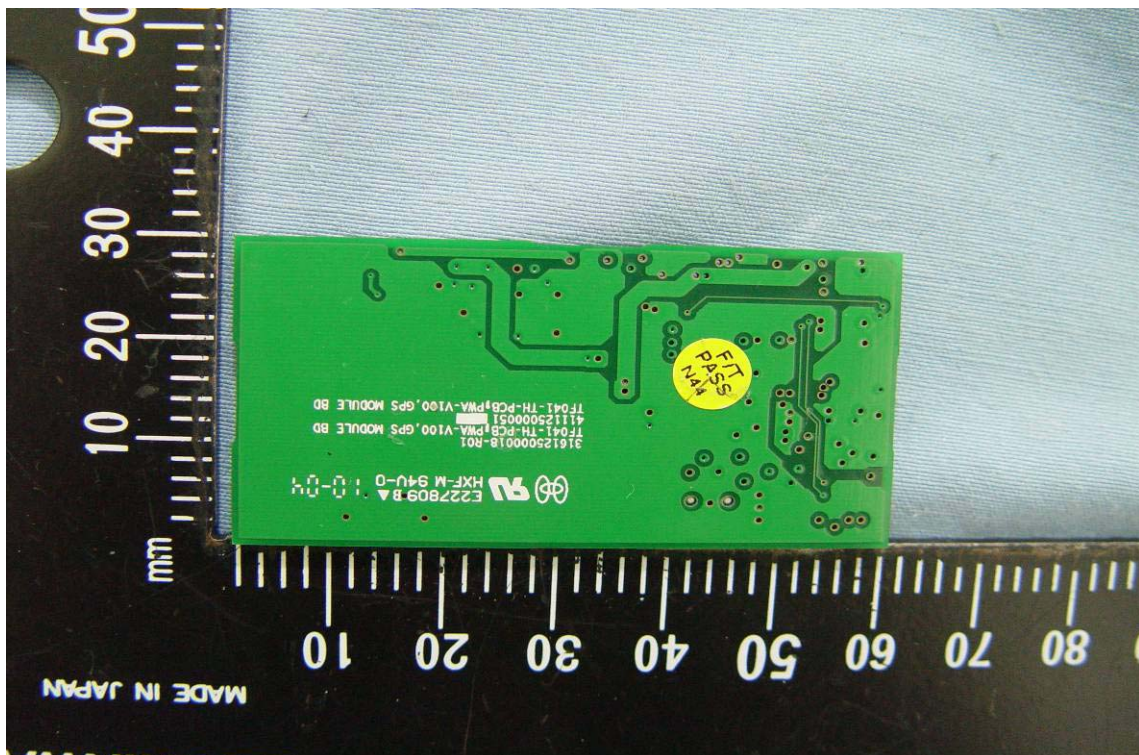
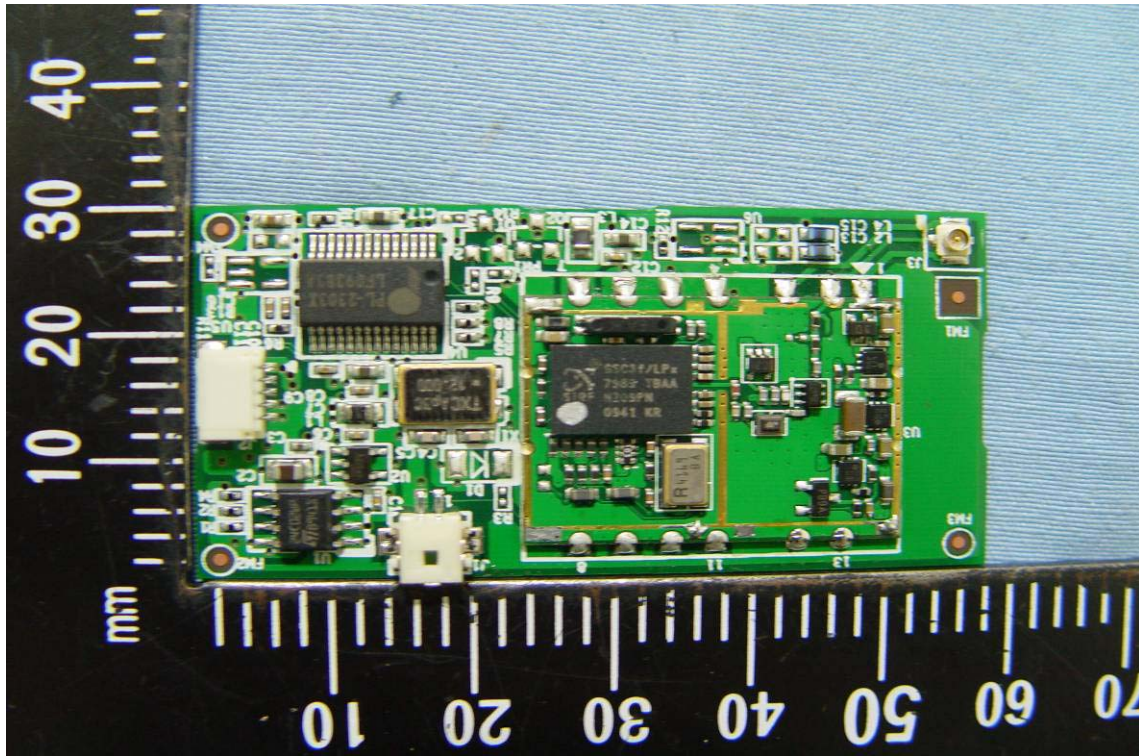






GPS module







Wireless LAN Module

