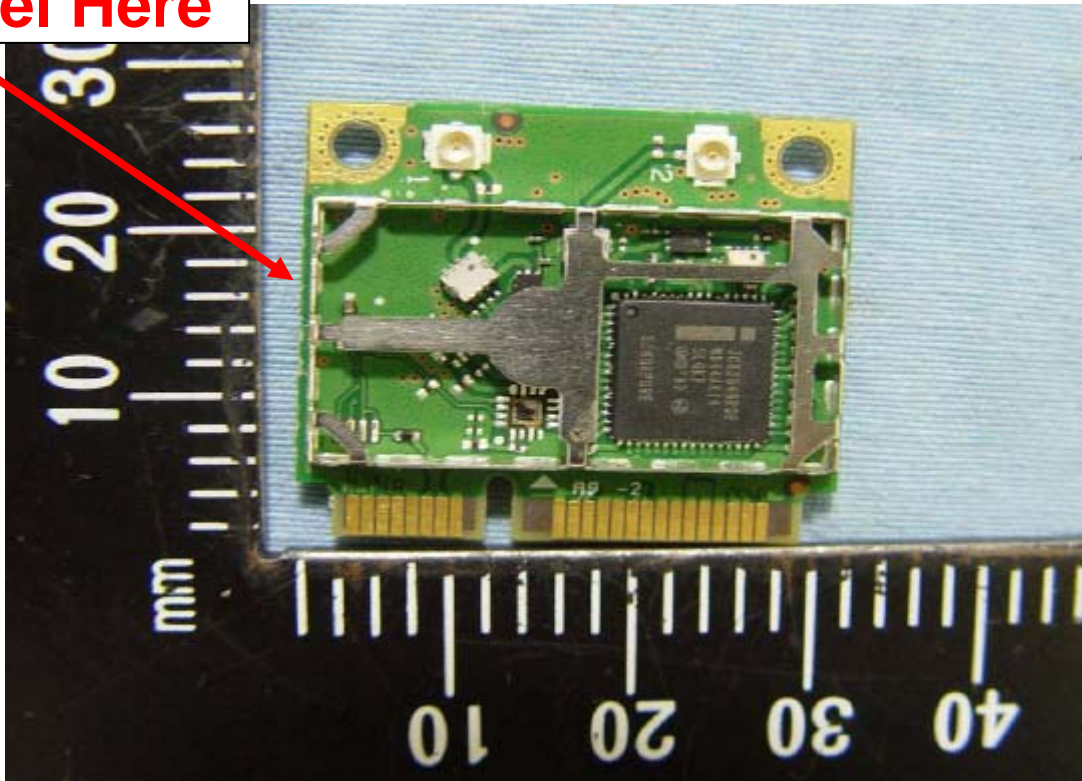


Label Here



Getac Technology Corp.

WLAN Module

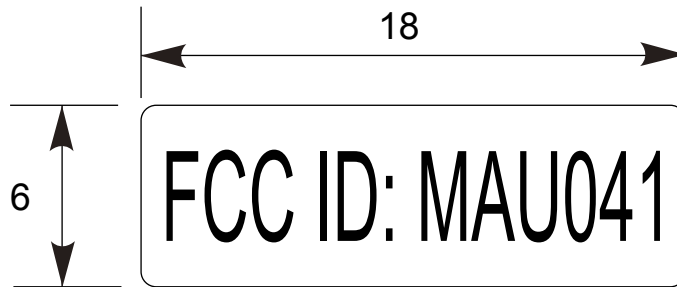
Model No: WiFi Link 6200

FCC ID:MAU040



model name:

TOL ± RANGE			✓														
	P1a	Met	Ins	Por	Cab	Pac	Gas	PCB									
0 ⁻ 6	0.1	0.1	0.1	0.2	0.5	1	0.5	0.1									/ /
6 ⁻ 30	0.1	0.1	.15	.25	1	1	0.5	0.1									/ /
30 ⁻ 80	0.1	.15	0.2	0.3	2	1.5	1	0.1									/ /
80 ⁻ 180	.15	.15	.25	0.3	2	2	1	.15									/ /
180 ⁻ 315	.15	0.2	0.3	0.4	2.5	2	1	.15									/ /
315 ⁻ 800	0.2	0.3	0.4	0.5	3	3	2	.15	ITEM	CONTENTS OF CHANGE			RVS	CHK	APV	M/D/Y	



NOTES:

1. MATERIAL: 變色反銀龍50# +PP20.
2. COLOR: 銀色底黑色字
3. 背膠類型: 壓克力膠
4. 厚度: 0.1mm
5. 黏性: 黏著力為 1.5kg/25mm 以上
6. 表面: 光滑面
7. 貼附位置: 安規標籤上
8. 環測項目及條件.(判定標準follow "系統表面處理的測試規範")

DATE	13-Aug-10	MATERIAL	SEE NOTES	TREATMENT	PROJECTION		
UNIT	MM	SCALE	4/1	DRAWING NAME	TF1-LABEL; FCC ID, 18x6, MAU041, BT, V200X		
DESIGNED	CHECKED	CHECKED	APPROVED	MATERIAL NO.	MF	242125600005	R 00
<i>Getac Technology Corp.</i>							

file name:

A B C D E F

1

2

3

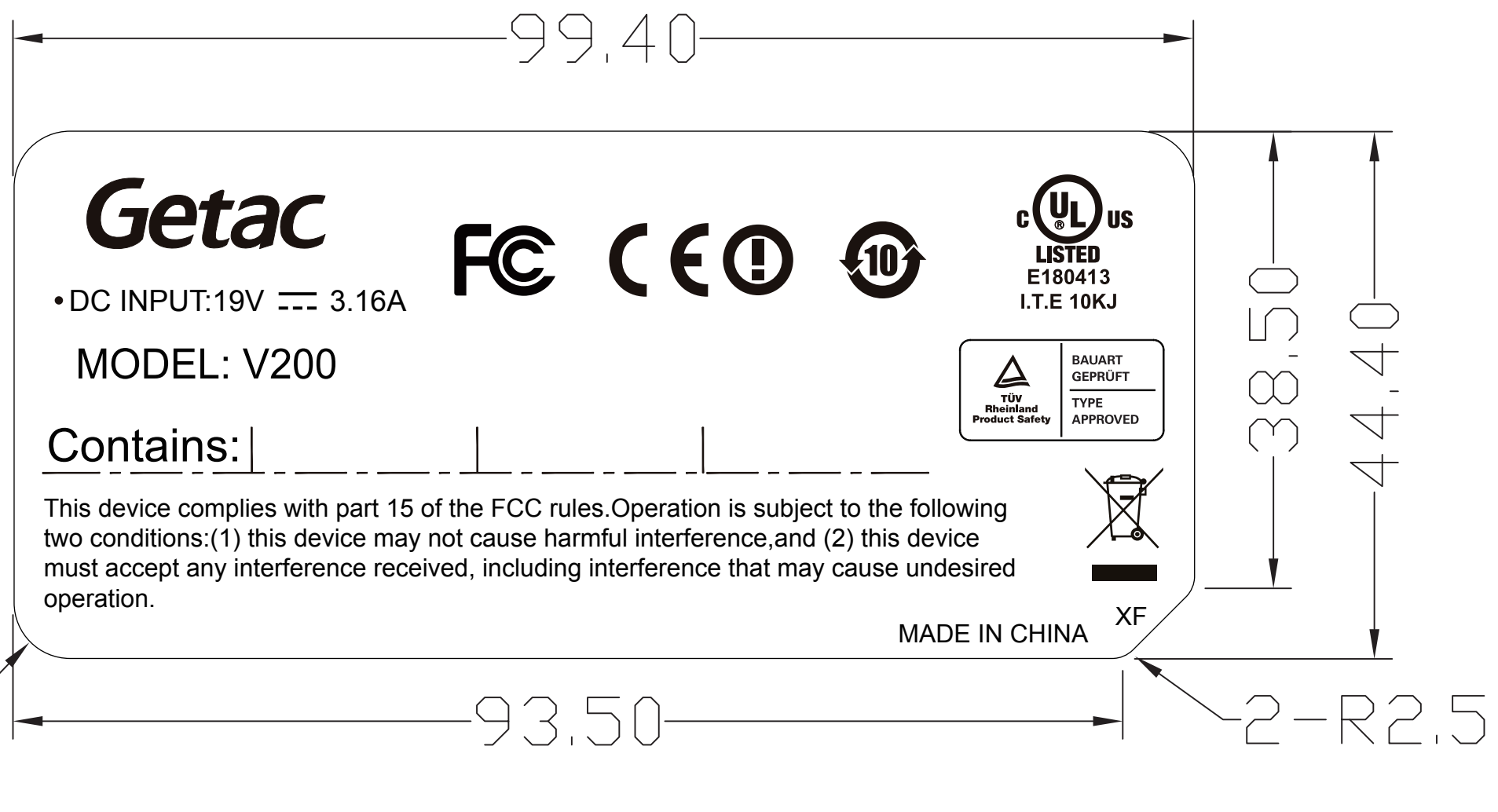
4

1

2

3

4



Getac

• DC INPUT: 19V 3.16A
MODEL: V200

Contains:

This device complies with part 15 of the FCC rules. Operation is subject to the following two conditions: (1) this device may not cause harmful interference, and (2) this device must accept any interference received, including interference that may cause undesired operation.



MADE IN CHINA

3-R4.7

2-R2.5

NOTES:

1. 材質: 變色反銀龍50#+透明特多龍#25.
T=0.1MM. 背膠: 壓克力膠
2. 印刷字體顏色: 黑色.
3. 請指定符合安規認證廠商製作.

				//		TOL ±						DATE 08-Apr-10		MATERIAL SEE NOTES		TREATMENT		PROJECTION		
				//		RANGE		Pla	Met	Ins	Por	Cab	Pac	Gas	PCB					
						0~6	0.1	0.1	0.1	0.2	0.5	1	0.5	0.1	UNIT	MM	SCALE	2/1	DRAWING NAME	TF1-LABEL;SAFETY LABEL,NEW GETAC LOGO,V200-X
						6~30	0.1	0.1	.15	.25	1	1	0.5	0.1	DRAWN	DESIGNED	CHECKED	APPROVED	MATERIAL NO.	MF 242125600001 R 00
						30~80	0.1	.15	0.2	0.3	2	1.5	1	0.1					Getac Technology Corp.	
						80~180	.15	.15	.25	0.3	2	2	1	.15						
						180~315	.15	0.2	0.3	0.4	2.5	2	1	.15						
ITEM	CONTENTS OF CHANGE	RVS	CHK	APV	M/D/Y	315~800	0.2	0.3	0.4	0.5	3	3	2	.15						

A

B

C

D

E

SHEET No. 1 of 1

model name:

file name:

Label Format

**“Contains Transmitter Module FCC ID:MAU041” or
“Contains FCC ID: MAU041”**

Label Here (Host)

