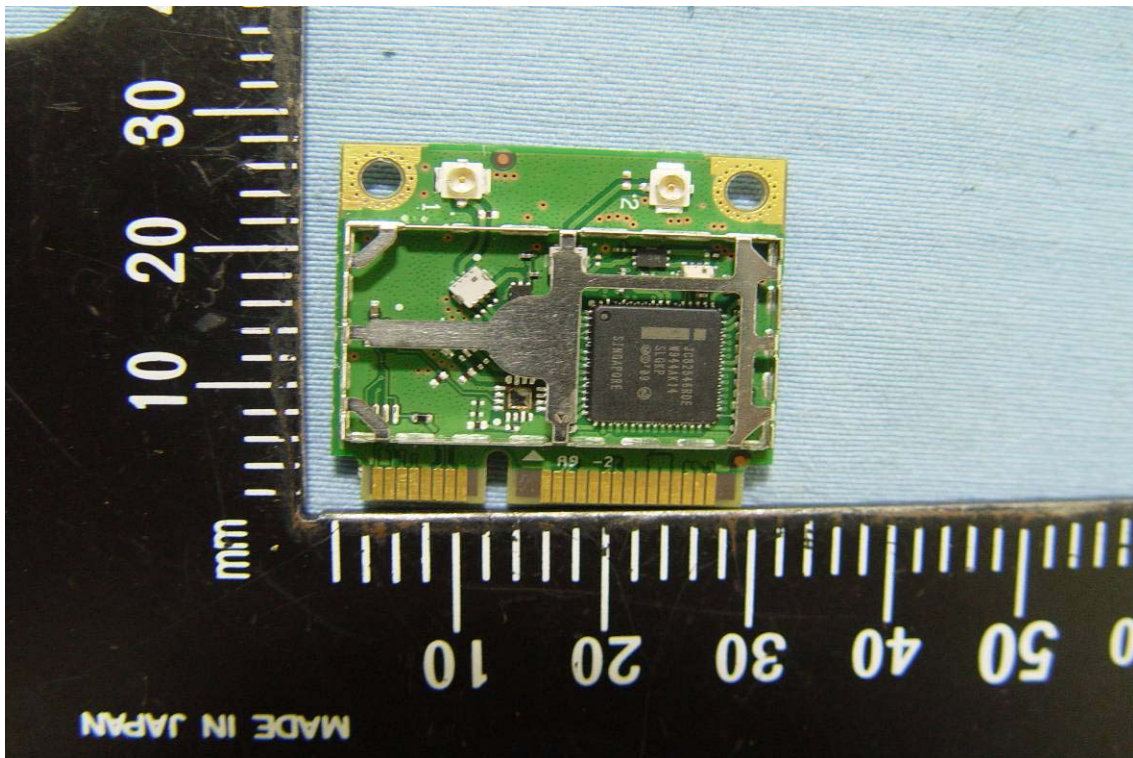
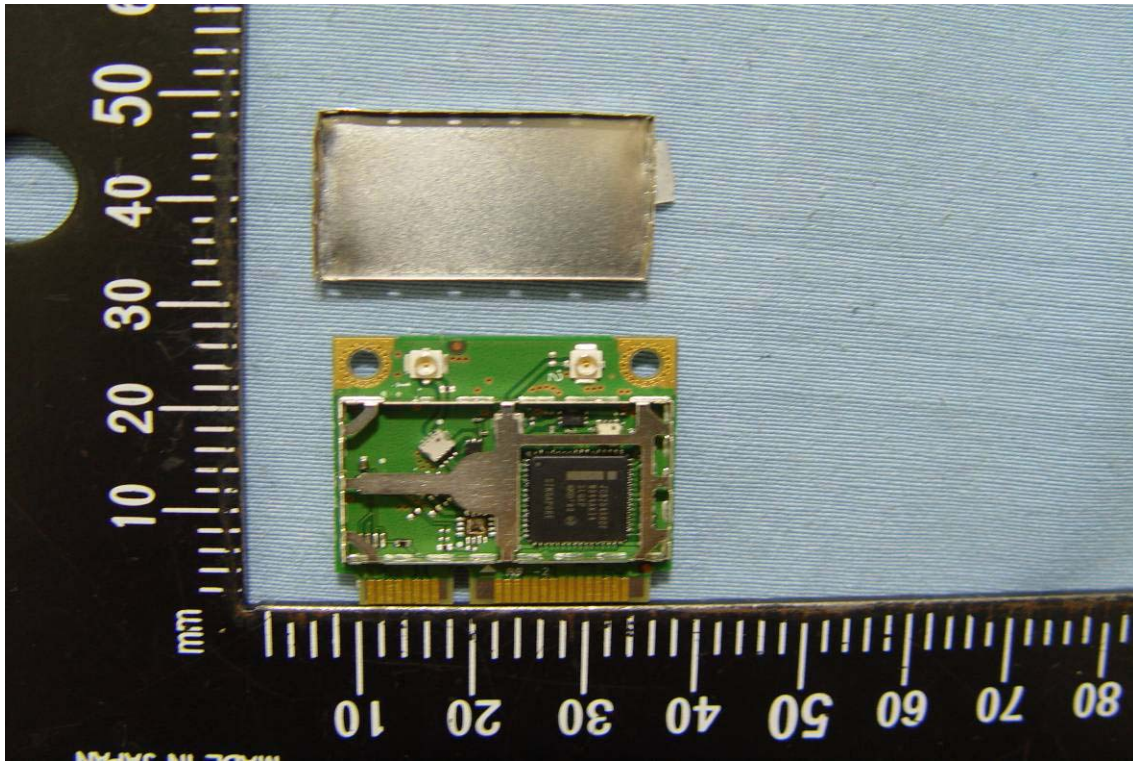
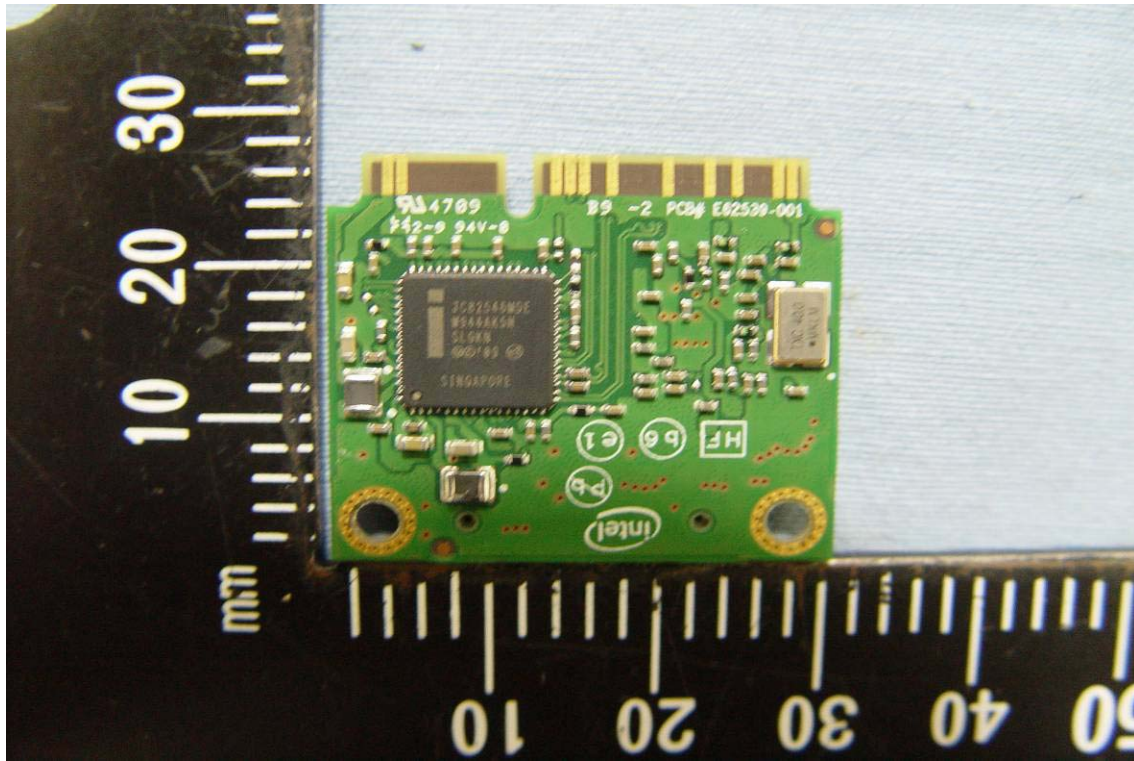




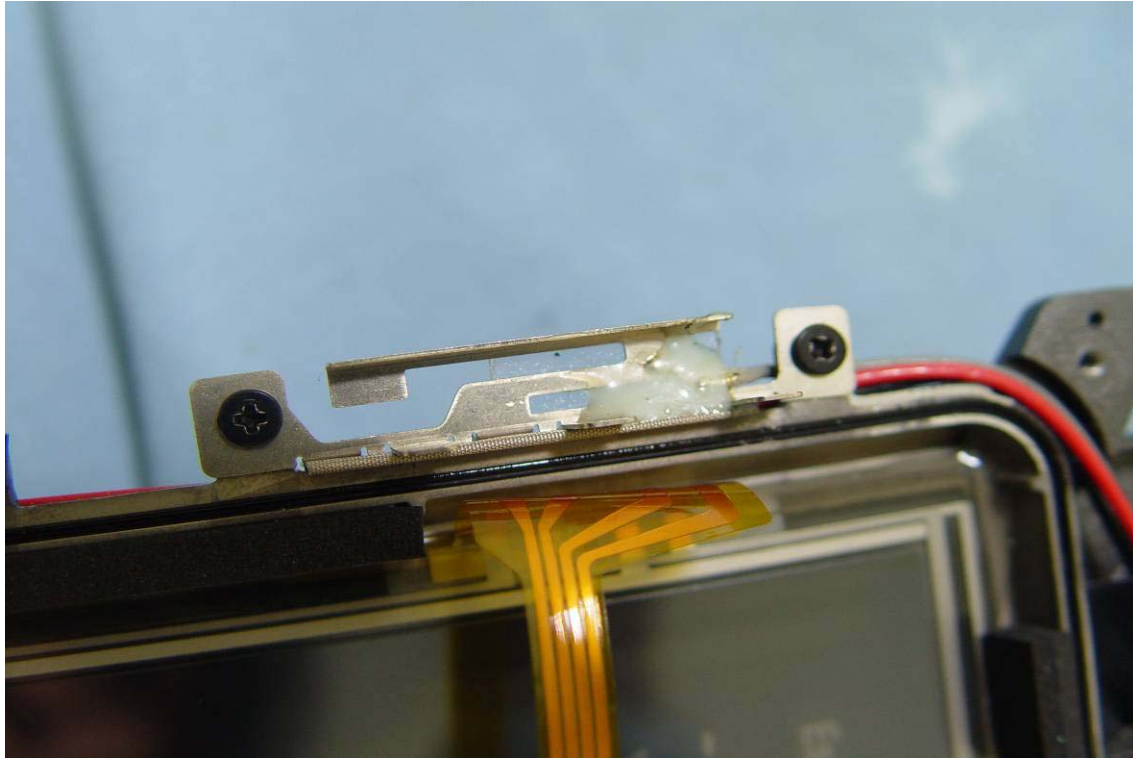
### INTERNAL PHOTOGRAPHS OF EUT







## Antenna



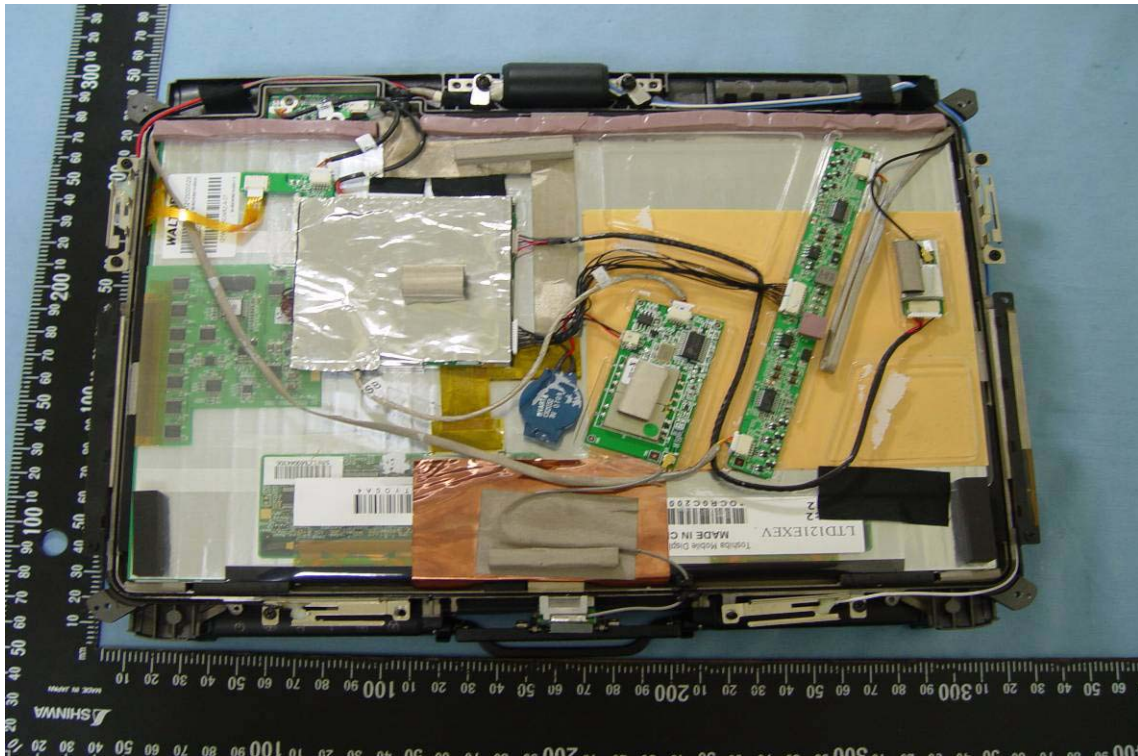


## **INTERNAL PHOTOGRAPHS OF SPECIFIC HOST PLATFORMS:**

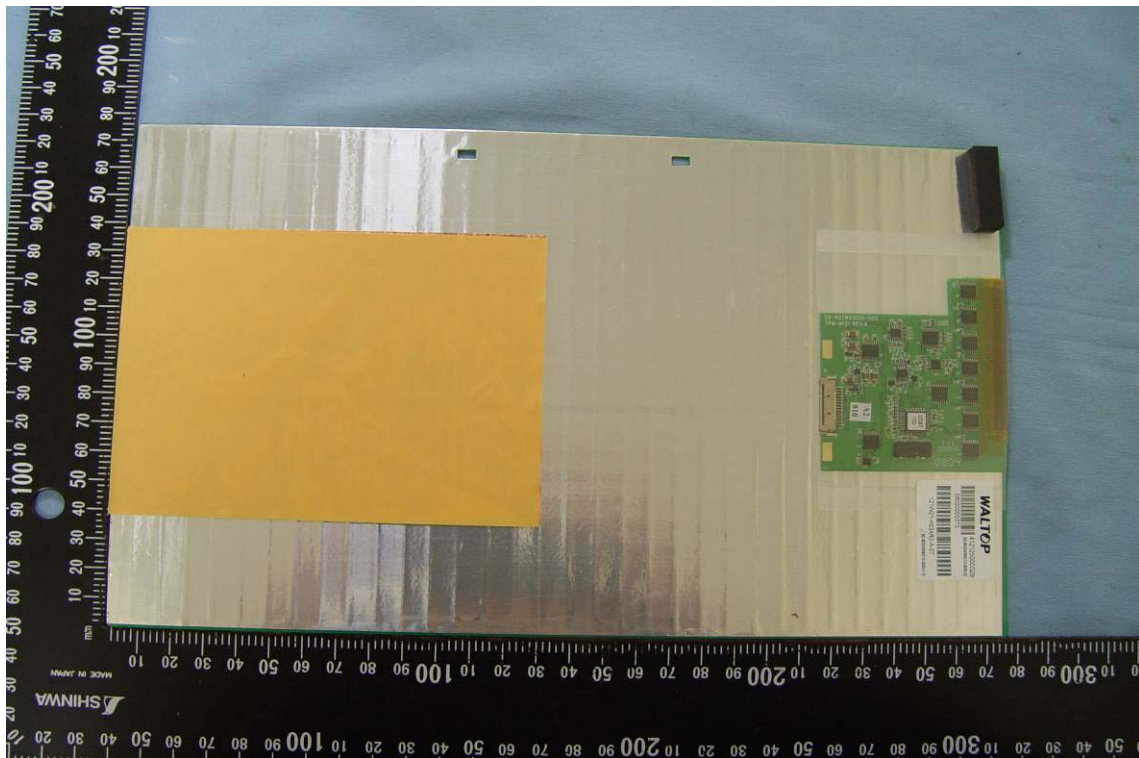
**Remark: There are three kinds of host platforms for this WLAN limited module approval application. All the specification and layout between these three host platforms are identical except they come with different model numbers and panel size for marketing purposes. For these three host platforms, there are also possible to own a BT module (FCC ID: MAU041; Model Number: BTC04R), WWan module (FCC ID: MAU039; Model Number: Gobi2) and a GPS module inside these three host platforms, however, either of this BT module, WLAN module, and WWan module will be not able to transmit simultaneously for any kind of situation. This application is only an application of Limited Module Approval for this WLAN function.**

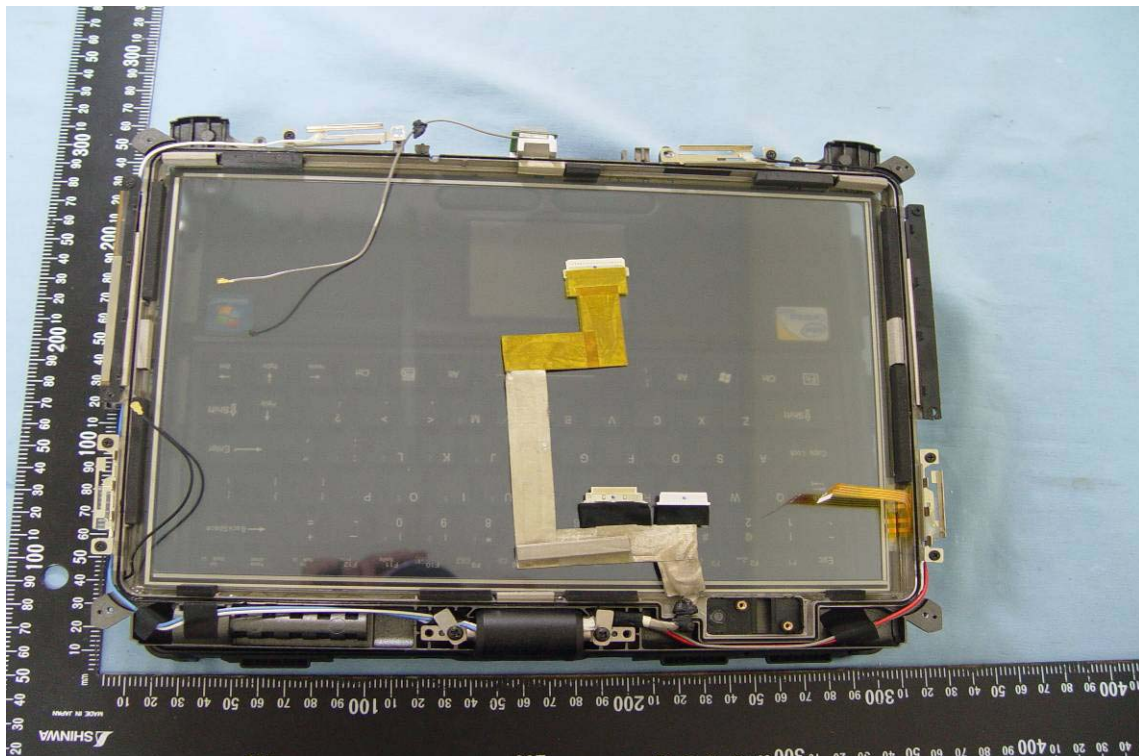


For V100-2x

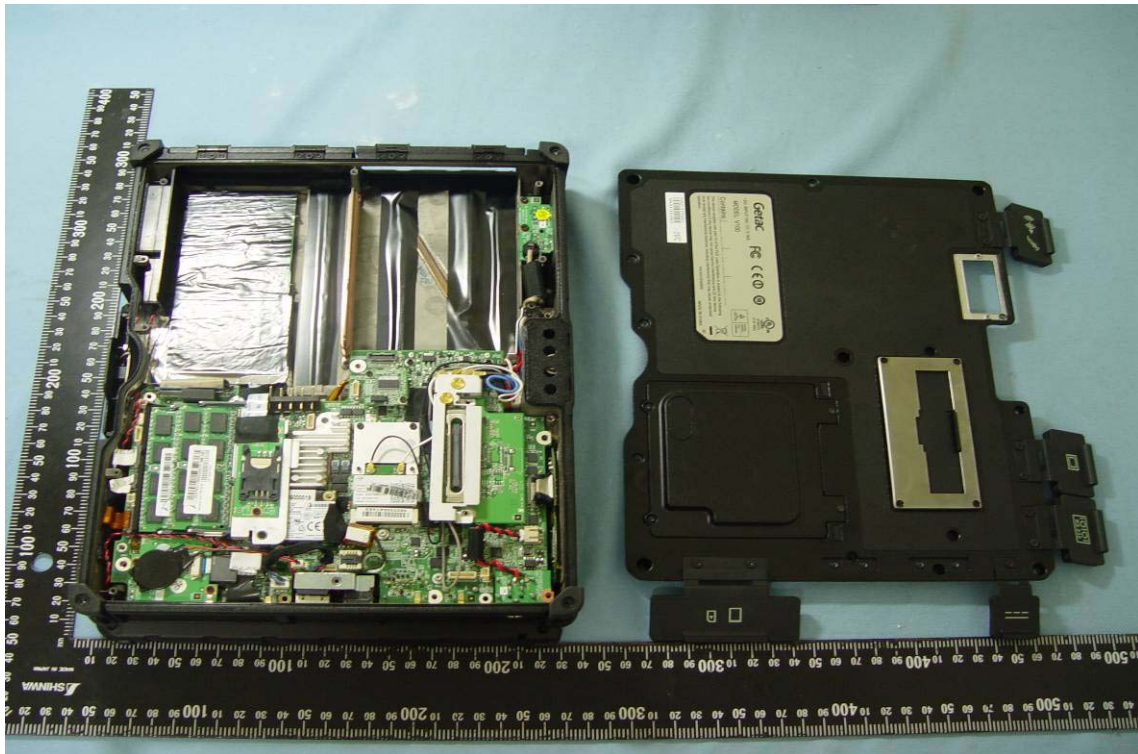




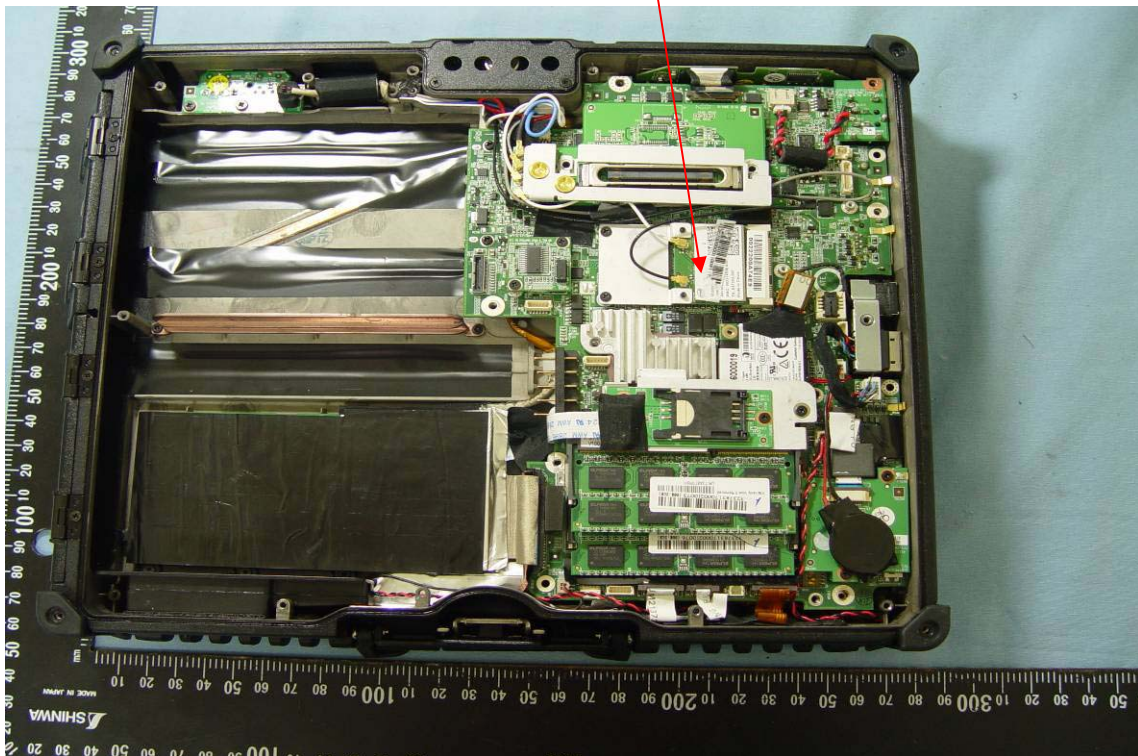


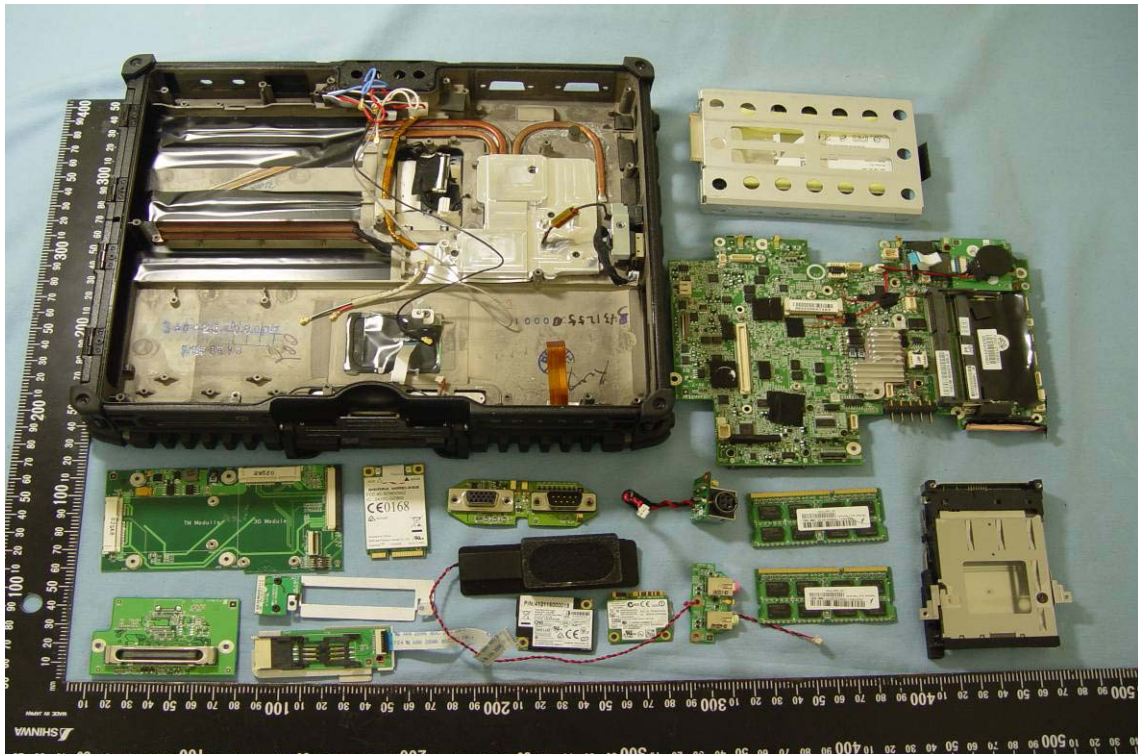
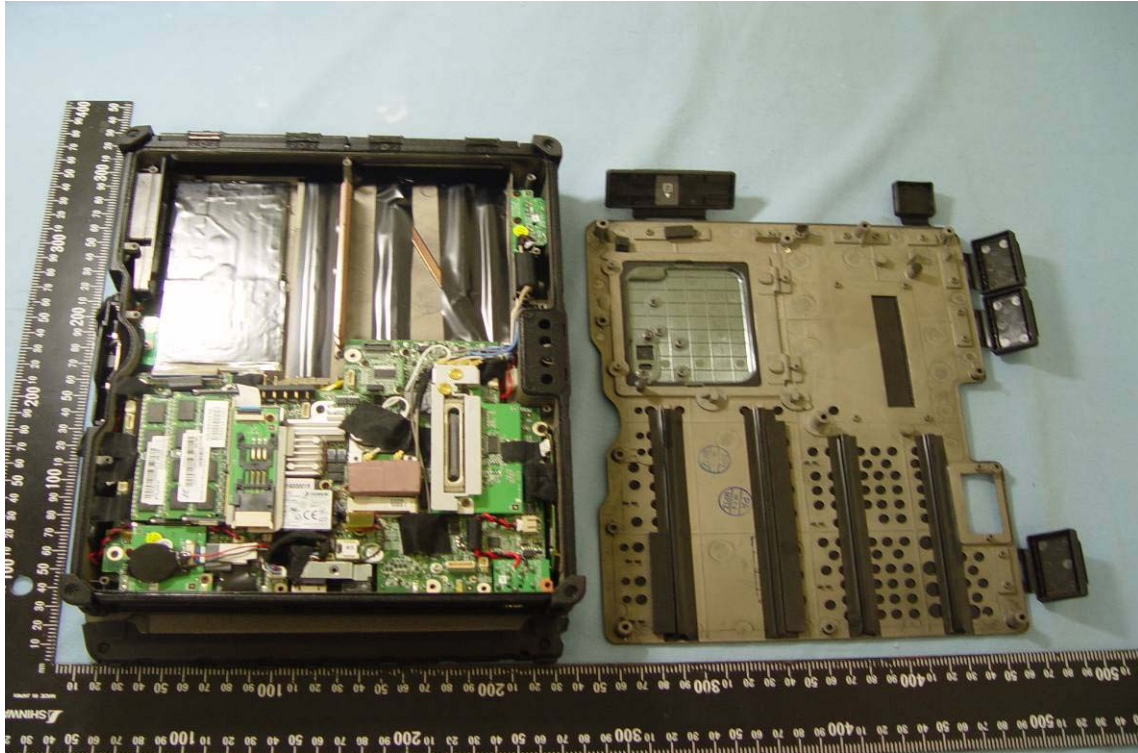






WLAN Module

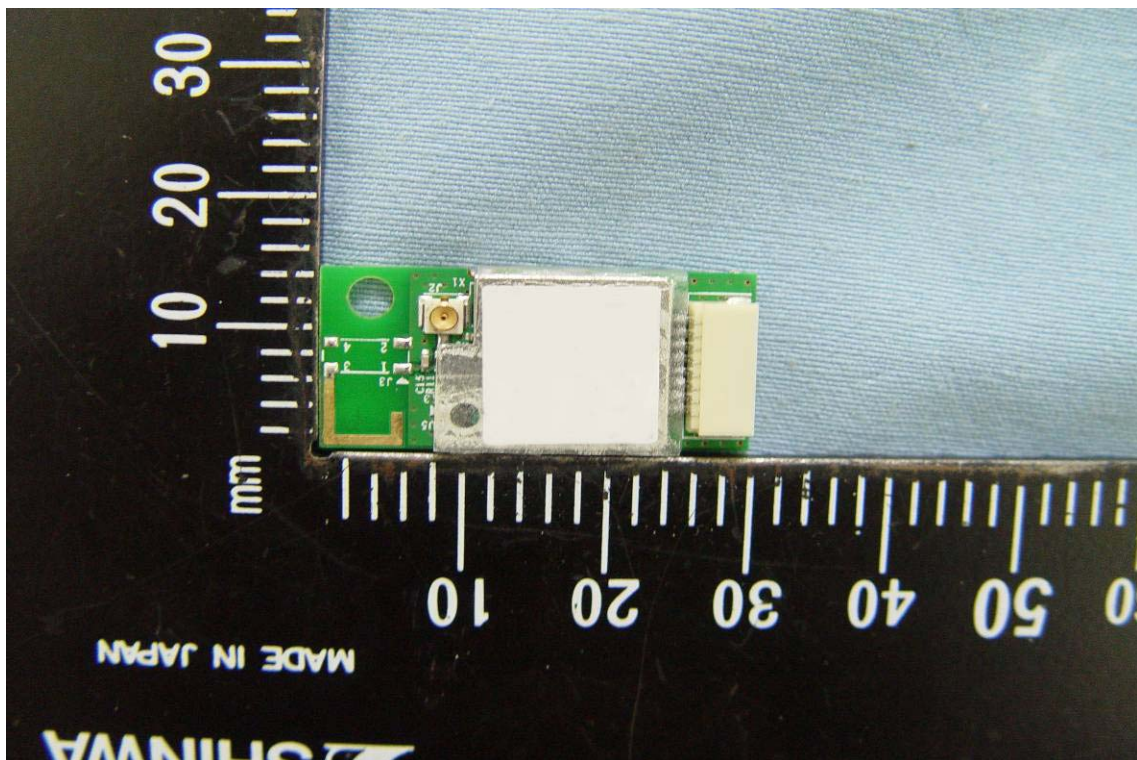
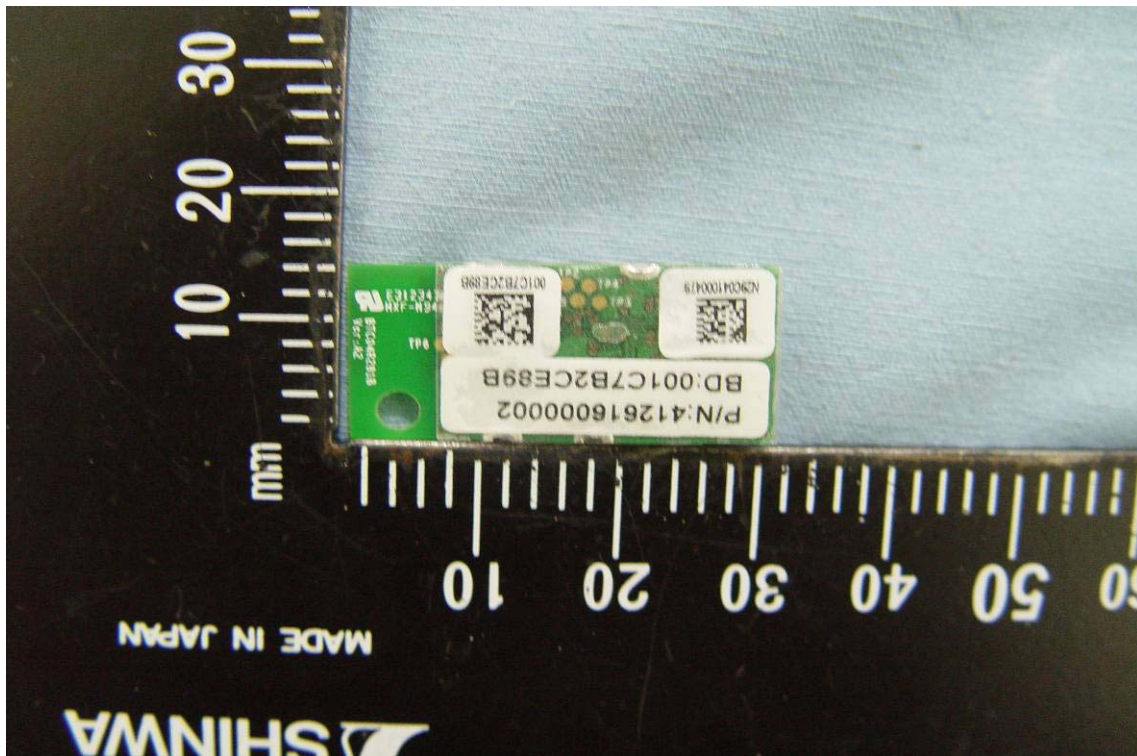


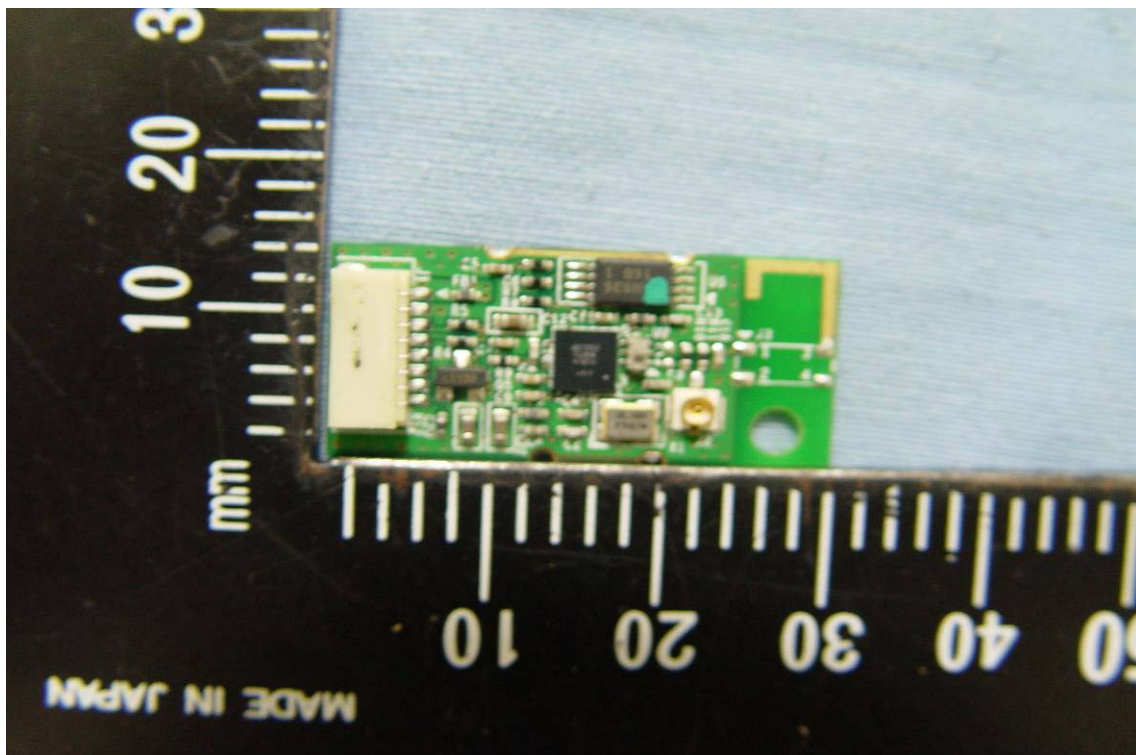
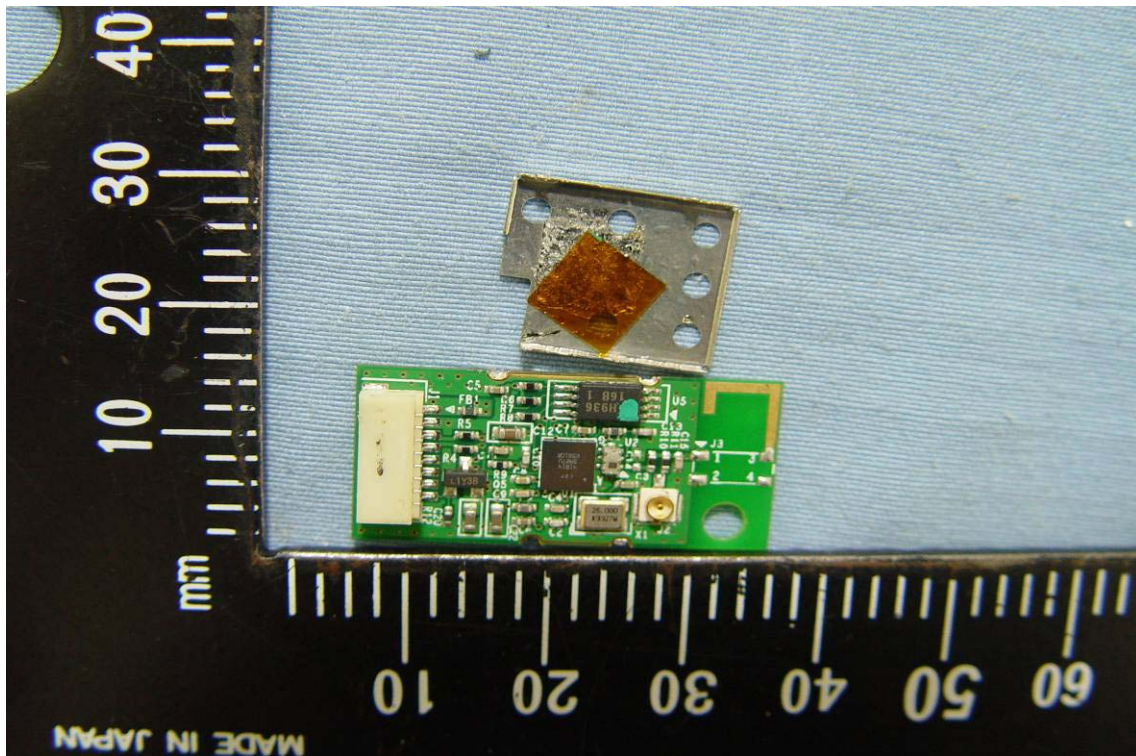


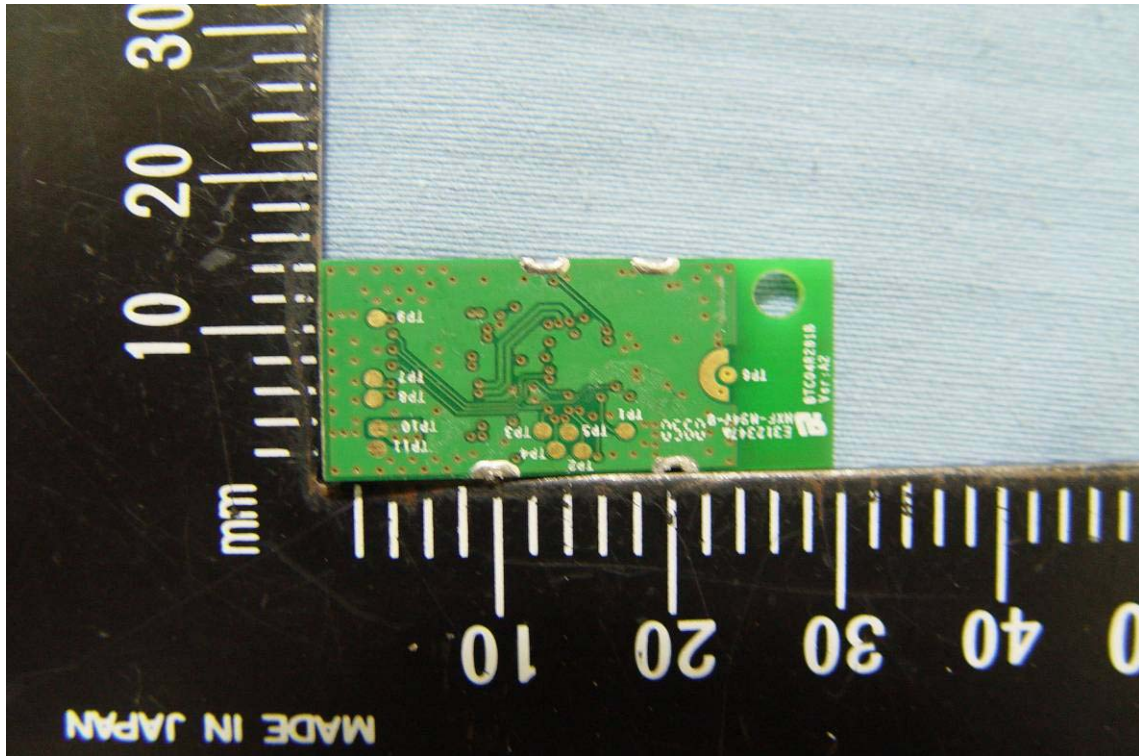




## BT Module









### GPS module

